

# National Weather Service



# Partners in Emergency Management - Working Together

**Vickie Nadolski**

*Acting NOAA Deputy Assistant Administrator for Weather Services,  
and National Weather Service Deputy Director*

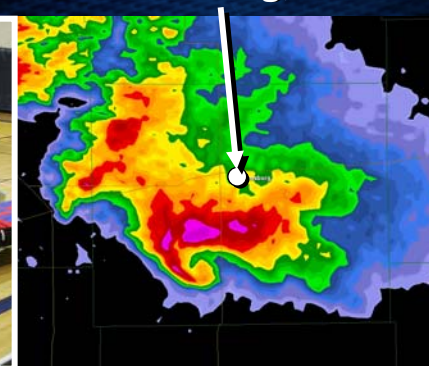
**2007 NEMA Conference**



# Tornadoes

	2007	2006	2005	2004
Number of Tornadoes	1185*	1105	1264	1819
Number of Tornado Fatalities	74*	67	38	36

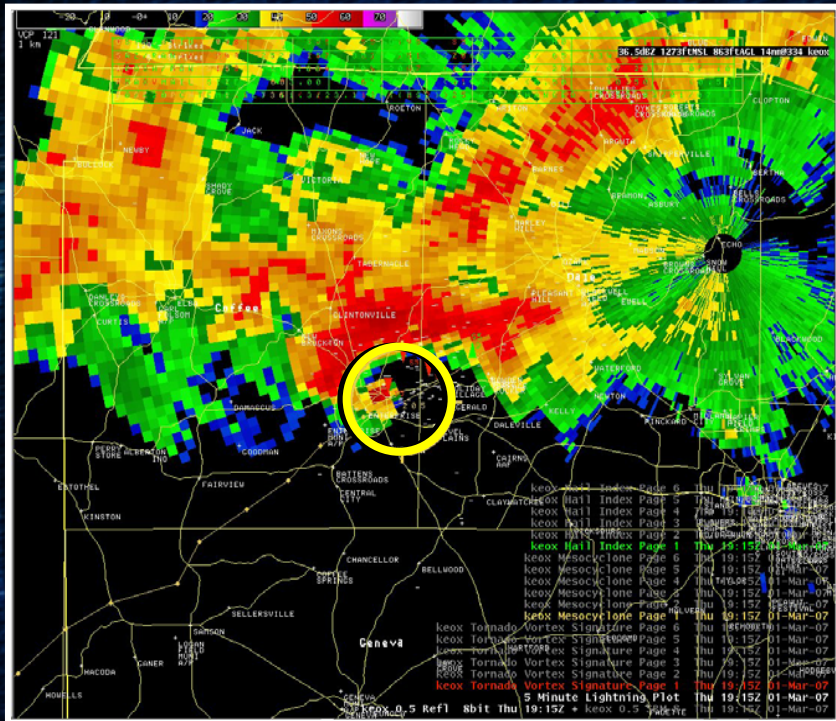
*\*Preliminary So Far This Year*



Greensburg, KS



# Enterprise, Ala.





# Greensburg, KS

Aerial view of one Greensburg's streets.



The lower left corner is Main St/Hwy 54 stop light.



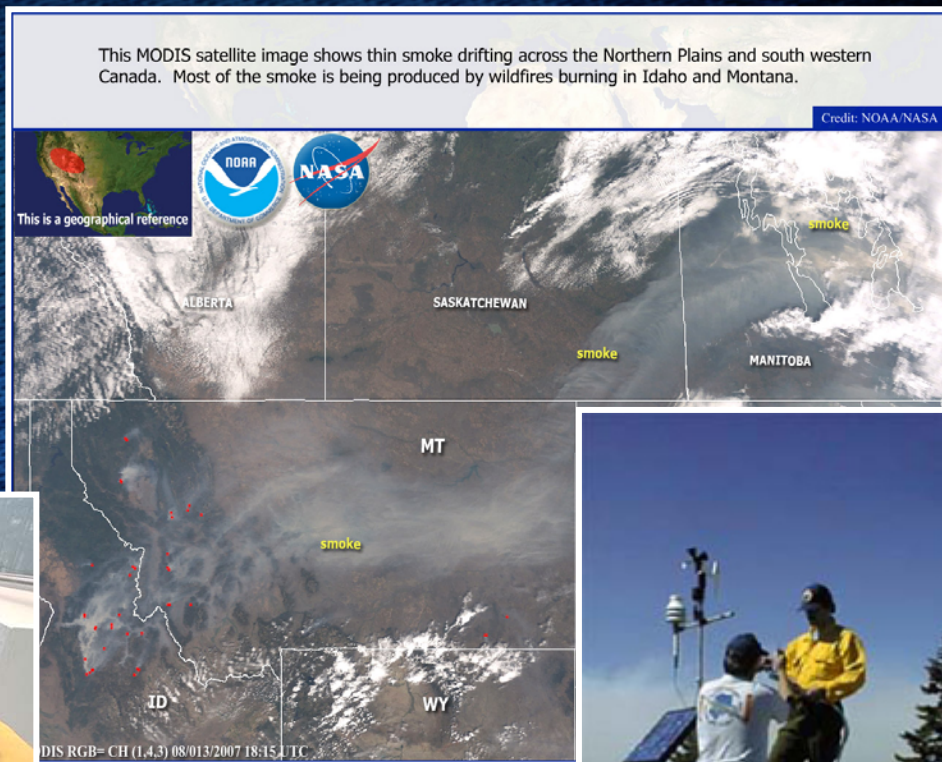
3rd Grade students of Greensburg volunteer by making new street signs for their town of Greensburg





# Fire

- 8 million acres have burned so far in 2007





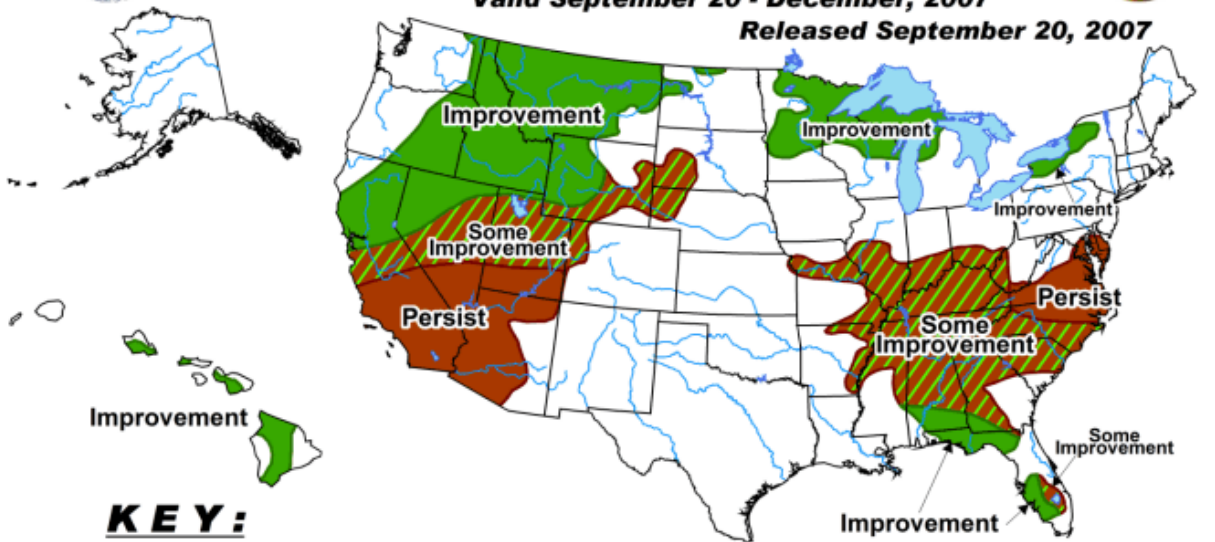
# Drought

## U.S. Seasonal Drought Outlook

Drought Tendency During the Valid Period

Valid September 20 - December, 2007

Released September 20, 2007

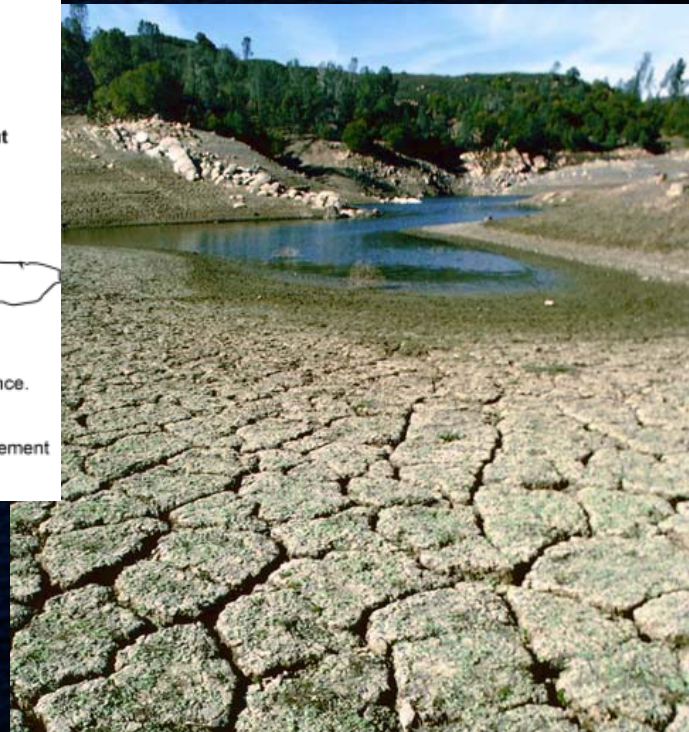


### KEY:

-  Drought to persist or intensify
-  Drought ongoing, some improvement
-  Drought likely to improve, impacts ease
-  Drought development likely

Depicts large-scale trends based on subjectively derived probabilities guided by short- and long-range statistical and dynamical forecasts. Short-term events -- such as individual storms -- cannot be accurately forecast more than a few days in advance. Use caution for applications -- such as crops -- that can be affected by such events. "Ongoing" drought areas are approximated from the Drought Monitor (D1 to D4 intensity). For weekly drought updates, see the latest U.S. Drought Monitor. NOTE: the green improvement areas imply at least a 1-category improvement in the Drought Monitor intensity levels, but do not necessarily imply drought elimination.

*We never know the wealth of water until the well is dry.*





# Our All Hazards Partnership





# Range of IMET Services

NOAA Safe Sanctuaries

## U.S. Large Wildfires

Democratic/Republican National Conventions

Minneapolis Bridge Collapse

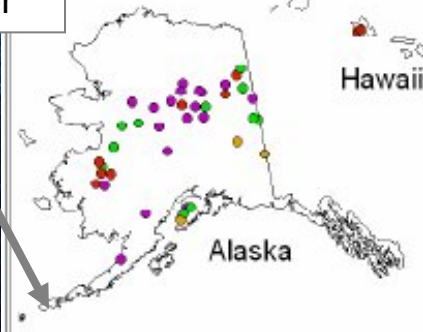
Texas/Oklahoma Started in December... IMETs there for 9 months!

Greensburg, KS Tornado – 2 months

Selendang Ayu Oil Spill... Dutch Harbor

Katrina Response IMETs present for 3 months

Columbia Shuttle Recovery



Map depicts only large fires reported to the National Interagency Coordination Center.

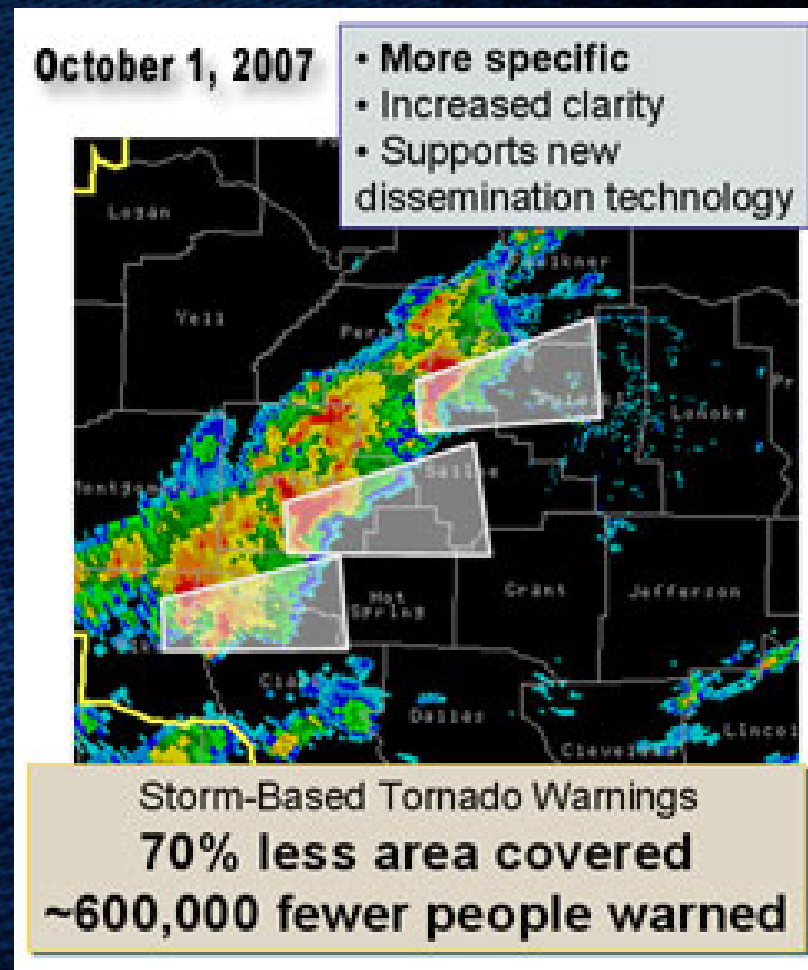
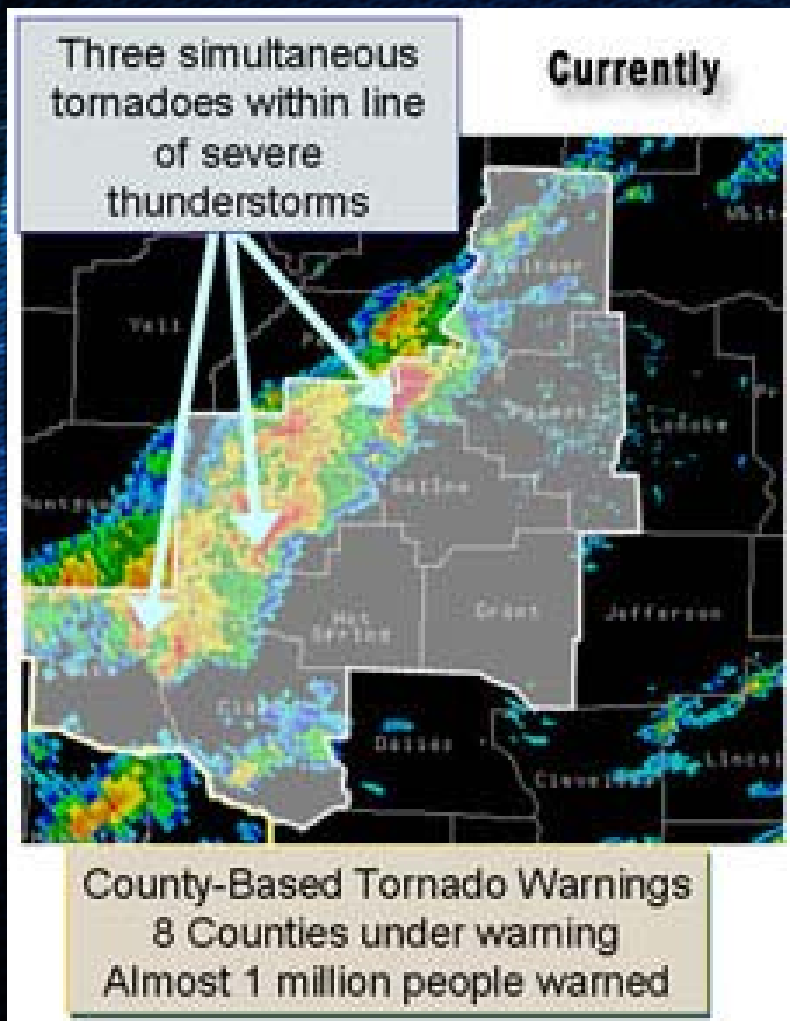
Map produced by the Intelligence-Predictive Services Section at the National Interagency Coordination Center, Boise, Idaho







# Storm Based Warnings





# NOAA Weather Radio All Hazards



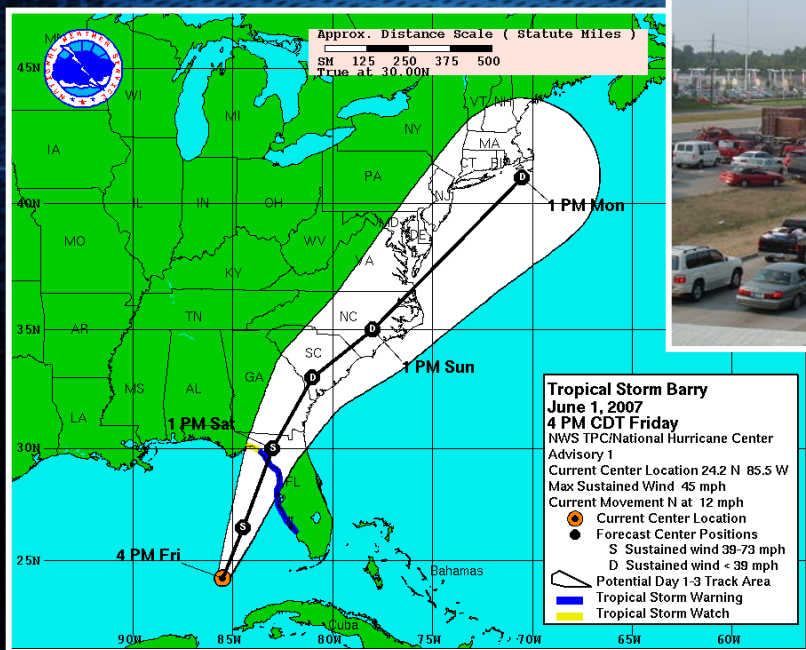
**All Hazards**  
**NOAA**  
Weather Radio  
NOAA's National Weather Service™



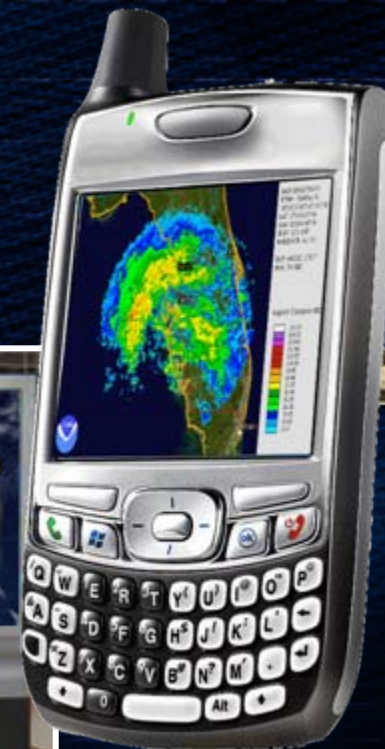


# Common Challenges

- **Mitigation, Warning, Response, Recovery**
  - *Getting the word out before, during, and after disaster strikes*



5-Day Track Forecast cone and Watch/Warning





# Future

- **Improve Our Current High Quality Services**
- **Strengthen Relations With Key Stakeholders**
  - *2007 IAEM National Weather Service Focus Group on Sunday, November 11th at 10 a.m.*
  - *Help Guide the NWS Future*





# Working Together

- You are our number one partner
- We cannot be successful in our mission without your continued support



**Questions?**