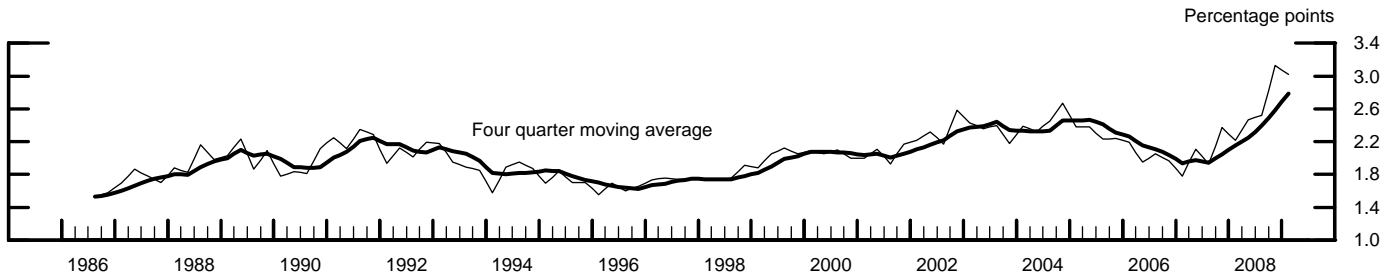


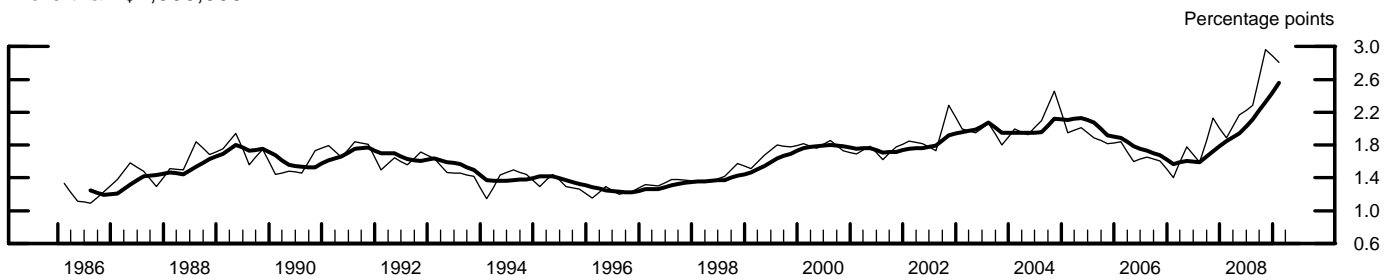
# Commercial and Industrial Loan Rates at Domestic Banks

(Spreads over intended federal funds rate, by loan size)

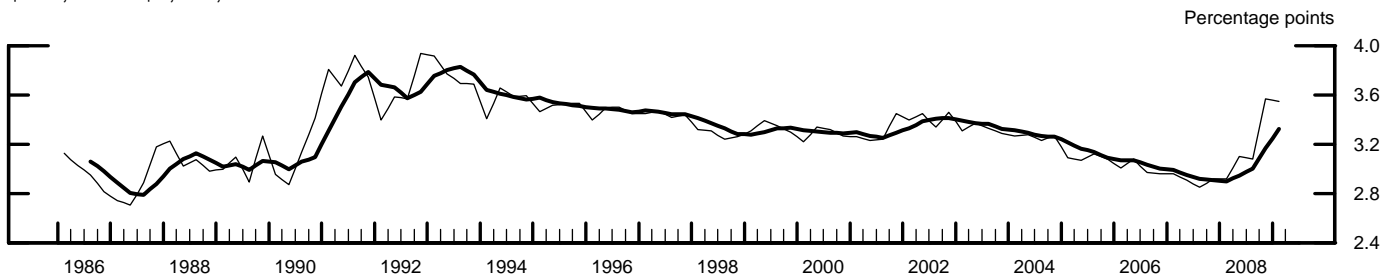
## All Loans



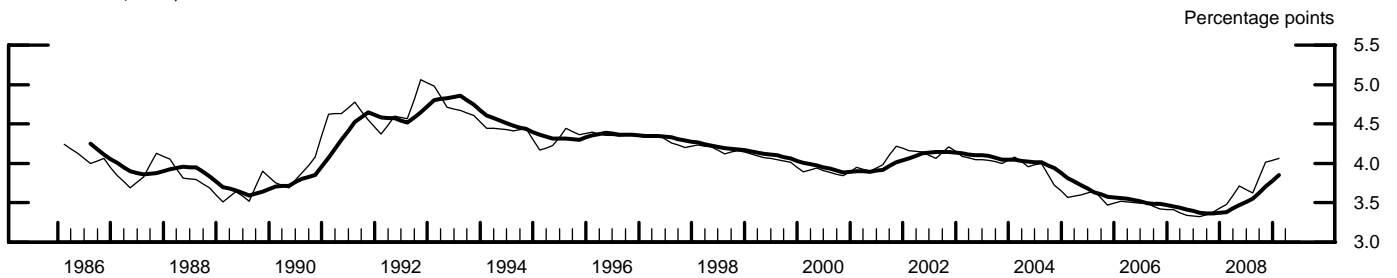
## More than \$1,000,000



## \$100,000 to \$1,000,000



## Less than \$100,000



Source. Survey of Terms of Business Lending. The most recent quarterly survey occurred February 2-6, 2009