

# Development of Native Grass and Forb Seed for Shallow Soil Sites – Superior National Forest

## Final Report - FY 2008



*Canada goldenrod producing seed*

Year Awarded: 2005  
Project completion: 2008  
Report number: 4 of 4  
Expenditures:

- FY05 funding \$30,000; expend. \$7,872; obligated \$19,300

**Contractors:**

Prairie Restorations/Boreal Natives  
3943 Munger Shaw Rd  
Cloquet, MN 55720

Jubilee Nursery  
N12025 1010<sup>th</sup> St.  
Bloomer, WI 54724

Leaning Pine Native Landscape  
3130 S. Camp Amnicon Rd.  
South Range, WI 54874

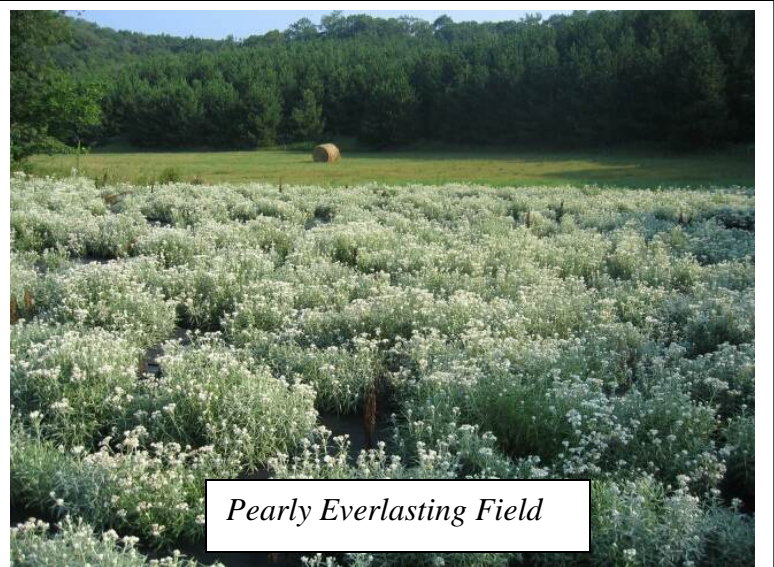
**Contact Person & phone number:**  
Jack Greenlee, (218) 229-8817

### **Background**

- Collected seed from 6 grass & wildflower species:
  - Grasses: false melic grass, slimleaf panic grass, mountain rice grass
  - Forbs: Canada goldenrod, yarrow, pearly everlasting
- Awarded Contracts for Seed Production to 3 Local Nurseries
- By end of 2008 growing season, nurseries will produce 55 pounds of local native seed for revegetating disturbed areas on shallow and droughty soil sites
- In future, nurseries will have local seed source for the Superior NF on hand and ready for production to meet our revegetation needs.

### **Project Accomplishments**

- For Canada goldenrod, yarrow, pearly everlasting, and false melic grass, planted fields produced target seed amounts by 2008
- The three growers are maintaining these fields and the Superior NF will be able to purchase more local origin seed in 2009
- Slimleaf panic grass and mountain ricegrass were not suited to cultivation – due to low seed yields and poor germination. Commercial production fields could not be established and target quantities of seed were not delivered.



*Pearly Everlasting Field*



**Superior National Forest**  
8901 Grand Ave Place  
Duluth, MN 55808