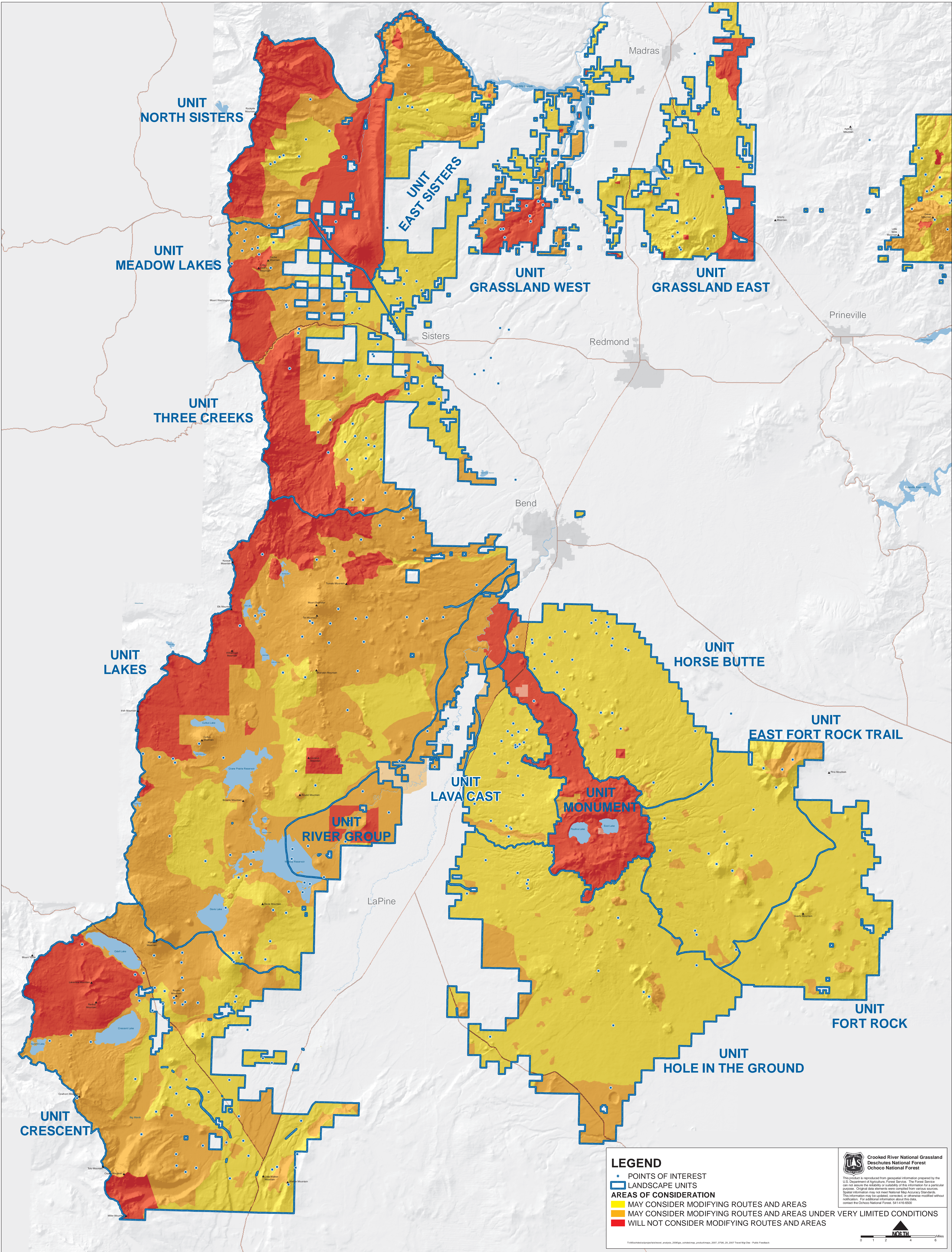


2006 PUBLIC FEEDBACK

Travel Management Project
Deschutes National Forest



LEGEND

- POINTS OF INTEREST
- ▭ LANDSCAPE UNITS
- AREAS OF CONSIDERATION**
- Yellow: MAY CONSIDER MODIFYING ROUTES AND AREAS
- Orange: MAY CONSIDER MODIFYING ROUTES AND AREAS UNDER VERY LIMITED CONDITIONS
- Red: WILL NOT CONSIDER MODIFYING ROUTES AND AREAS

Crooked River National Grassland
Deschutes National Forest
Ochoco National Forest

This product is reproduced from geospatial information prepared by the U.S. Department of Agriculture, Forest Service. The Forest Service can not ensure the reliability or suitability of this information for a particular purpose. Original data statements were compiled from various sources. Spatial information may not meet National Map Accuracy Standards. This information may be updated, corrected, or otherwise modified without notification. For additional information about the data, contact the Ochoco National Forest, 541-416-0500.

Trail Management Project Analysis, 2006/06, October, product/2007_07/06_28_2007_Trip_Mgt_Ovr_Pub_Feedback

NORTH
0 1 2 4 6 Miles