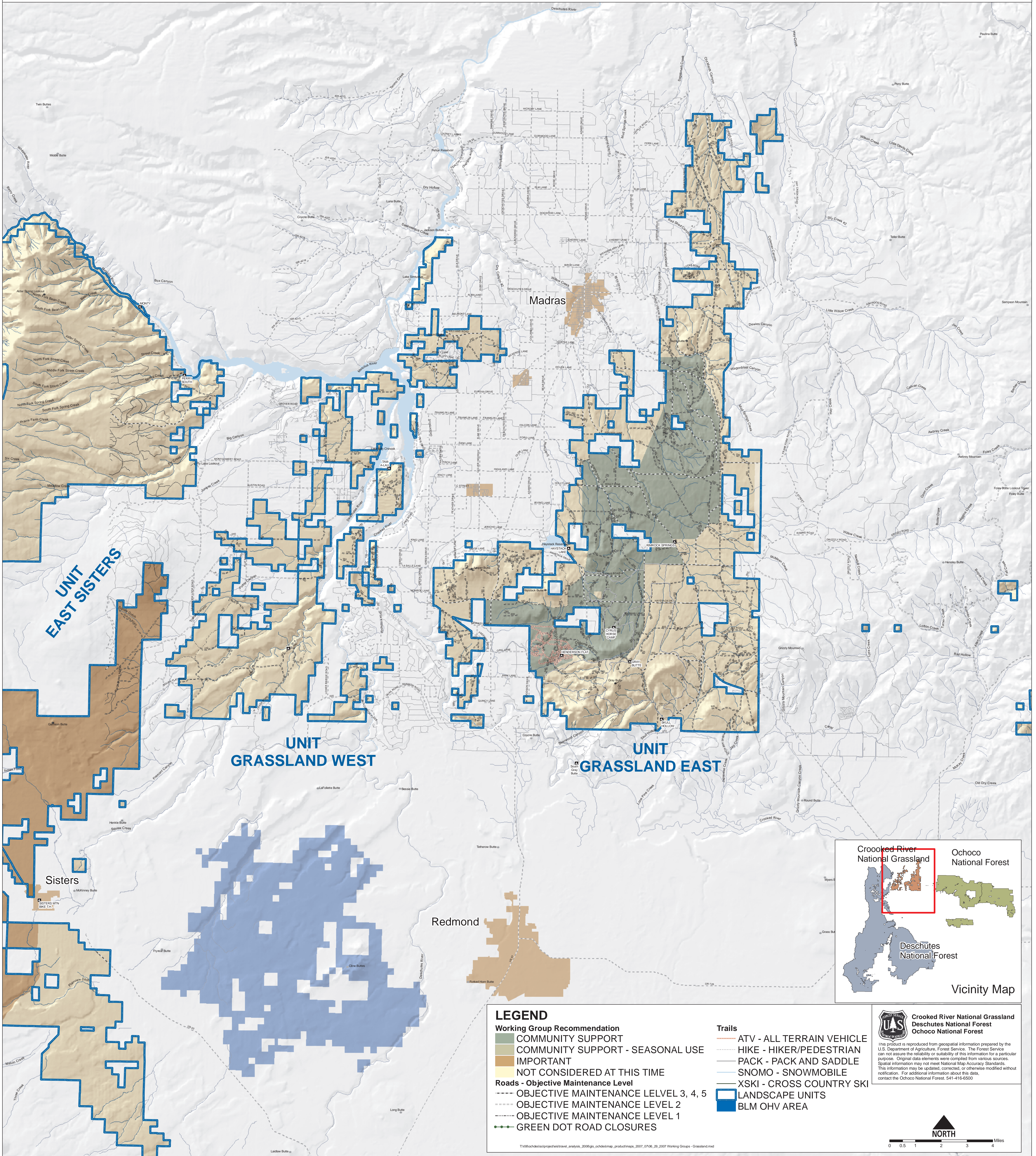


# CROOKED RIVER NATIONAL GRASSLAND WORKING GROUP RECOMMENDATIONS



**UNIT  
EAST SISTERS**

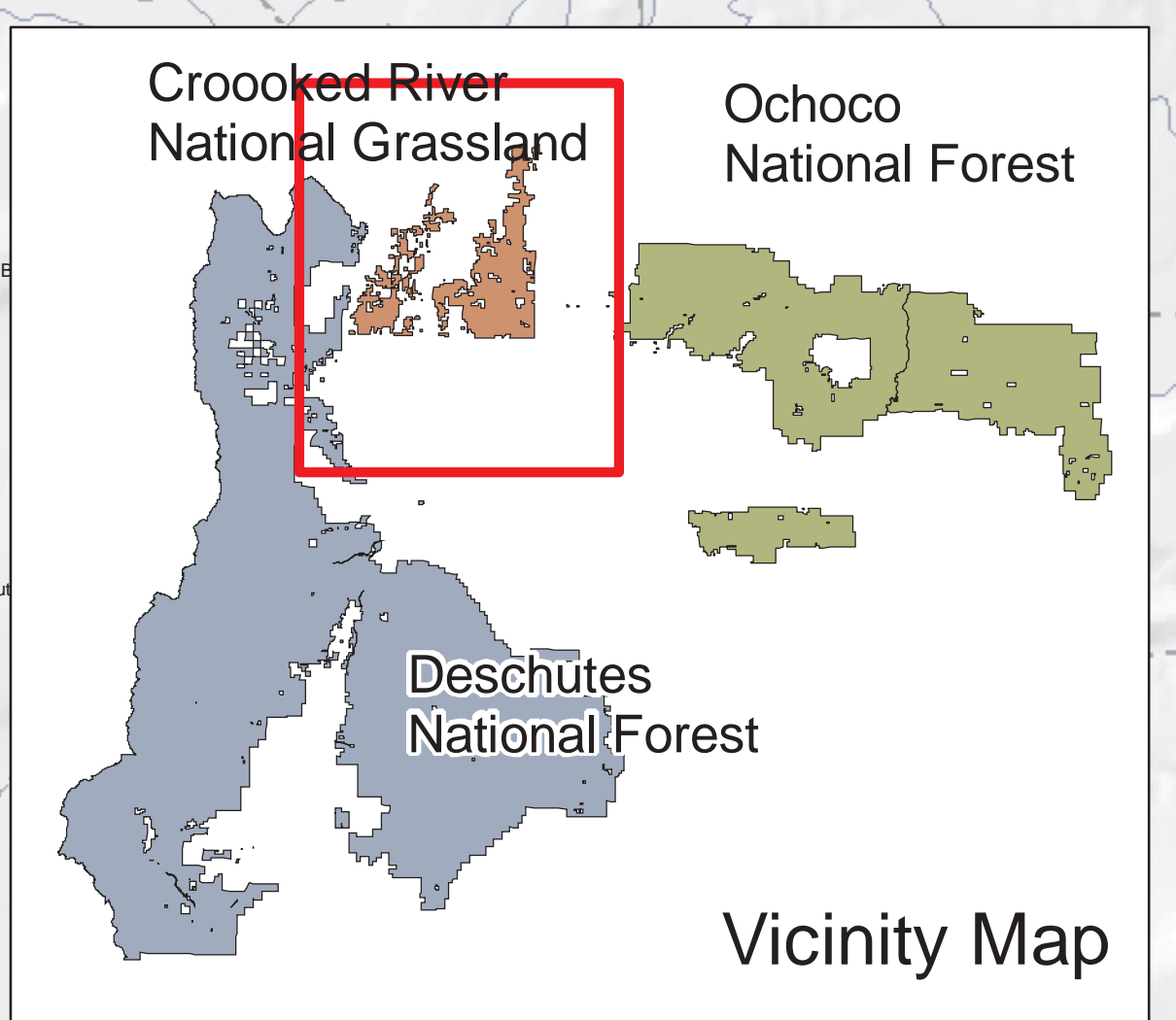
**UNIT  
GRASSLAND WEST**

**UNIT  
GRASSLAND EAST**

## LEGEND

- Working Group Recommendation**
- COMMUNITY SUPPORT
  - COMMUNITY SUPPORT - SEASONAL USE
  - IMPORTANT
  - NOT CONSIDERED AT THIS TIME
- Roads - Objective Maintenance Level**
- OBJECTIVE MAINTENANCE LEVEL 3, 4, 5
  - OBJECTIVE MAINTENANCE LEVEL 2
  - OBJECTIVE MAINTENANCE LEVEL 1
  - GREEN DOT ROAD CLOSURES

- Trails**
- ATV - ALL TERRAIN VEHICLE
  - HIKE - HIKER/PEDESTRIAN
  - PACK - PACK AND SADDLE
  - SNOMO - SNOWMOBILE
  - XSKI - CROSS COUNTRY SKI
- LANDSCAPE UNITS**
- BLM OHV AREA



**Crooked River National Grassland**  
Deschutes National Forest  
Ochocho National Forest

This product is reproduced from geospatial information prepared by the U.S. Department of Agriculture, Forest Service. The Forest Service can not assure the reliability or suitability of this information for a particular purpose. Original data elements were compiled from various sources. Spatial information may not meet National Map Accuracy Standards. This information may be updated, corrected, or otherwise modified without notification. For additional information about this data, contact the Ochocho National Forest, 541-416-6500.

**NORTH**

0 0.5 1 2 3 4 Miles