

UNITED STATES DEPARTMENT OF THE INTERIOR
FISH AND WILDLIFE SERVICE
REALTY

TRACT DESCRIPTION
OF THE
RONALD MURPHY, ET AL., TRACT
(26)
NYE COUNTY, NEVADA
ASH MEADOWS NATIONAL WILDLIFE REFUGE
CONTAINING 40.32 ACRES

DESCRIPTION PREPARED BY
WILLIAM C. DRUMMOND
LAND SURVEYOR
MARCH, 1991

DESCRIPTION
OF THE
RONALD MURPHY, ET AL., TRACT
(26)
NYE COUNTY, NEVADA

THE FOLLOWING DESCRIBED TRACT OF LAND IS LOCATED IN NYE COUNTY, NEVADA, BEING A PART OF THE LAND DESCRIBED IN DOCUMENT NUMBER 273732 & 274455, NYE COUNTY OFFICIAL RECORDS.

T. 17 S., R. 50 E., MT. DIABLO BASE AND MERIDIAN:

THE SOUTHEAST ONE-QUARTER OF THE NORTHWEST ONE-QUARTER, SECTION 35.

CONTAINING 40.32 ACRES, MORE OR LESS.

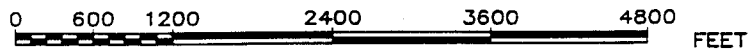
BOUNDED ON THE NORTH AND WEST BY LANDS OF THE BUREAU OF LAND MANAGEMENT; ON THE EAST BY LANDS OF THE BUREAU OF LAND MANAGEMENT WITH SECONDARY CONTROL TO THE FISH AND WILDLIFE SERVICE; AND ON THE SOUTH BY LANDS OF THE FISH AND WILDLIFE SERVICE.

THE ABOVE DESCRIBED TRACT OF LAND IS DELINEATED ON A MAP TRACING DESIGNATED RONALD MURPHY ET AL., TRACT (26), BEARING THE DATE OF MARCH 29, 1991, OF RECORD IN THE FILES OF THE DEPARTMENT OF THE INTERIOR. A PRINT FROM THAT MAP TRACING IS ATTACHED HERETO.

UNITED STATES DEPARTMENT OF THE INTERIOR
 FISH AND WILDLIFE SERVICE
 ASH MEADOWS NATIONAL WILDLIFE REFUGE
 RONALD MURPHY, ET AL., TRACT
 (26)

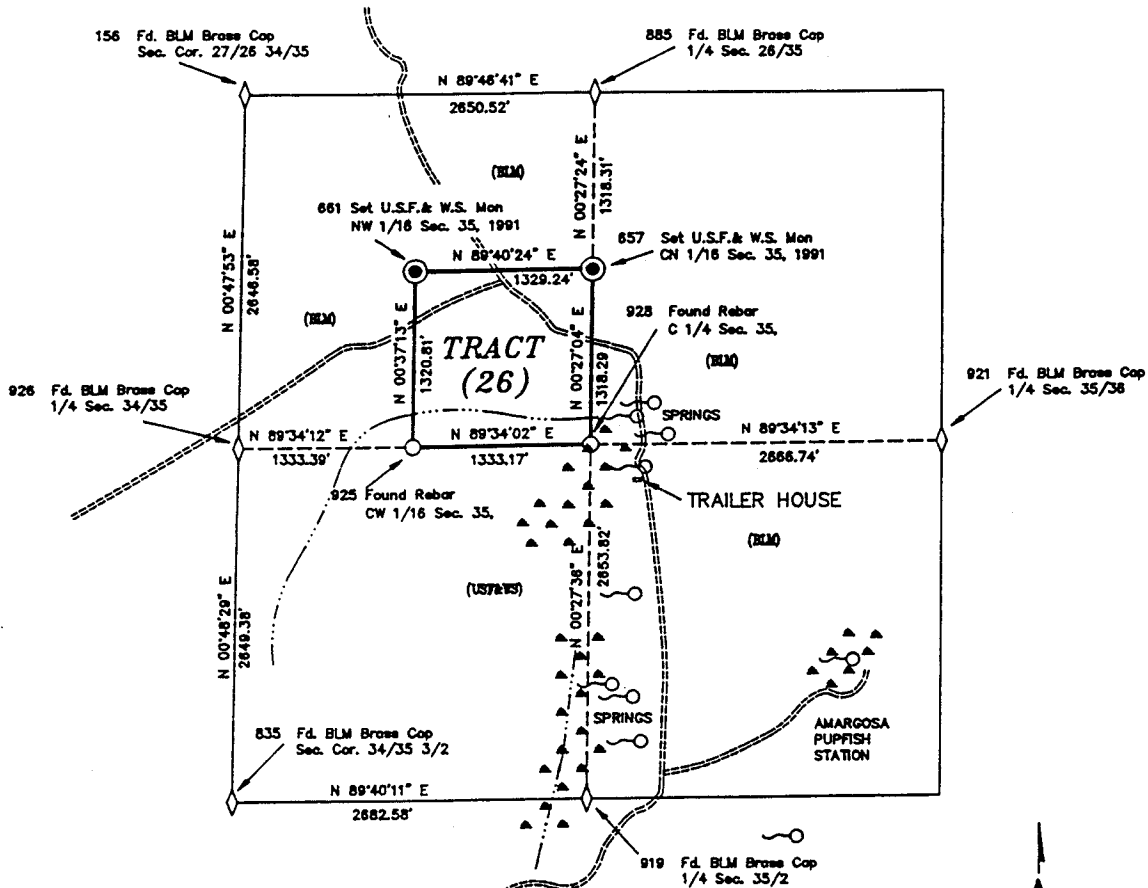
40.32 ACRES

NYE COUNTY, NEVADA



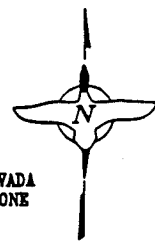
MOUNT DIABLO MERIDIAN

T. 17 S., R. 50 E.



THIS MAP WAS COMPILED FROM OFFICIAL PLATS OF THE BUREAU OF LAND MANAGEMENT, PRIVATE SURVEYS RECORDED AND UNRECORDED, PHOTOGRAMMETRIC SURVEYS AND FIELD SURVEYS MADE 1985 THRU 1987 AND MARCH, 1991 BY THE FISH AND WILDLIFE SERVICE AND RECORDS IN THE FILES THEREOF.

1 INCH = 1200 FEET
 GRID FACTOR = 0.999804
 BASIS OF BEARING IS NEVADA STATE PLANE, CENTRAL ZONE



3/29/91
 DATE

W. J. ...
 PROFESSIONAL LAND SURVEYOR

REALTY

WCD 32991 REV1

* REDUCTION - SEE EXHIBIT 2 FOR ACTUAL DIMENSIONS

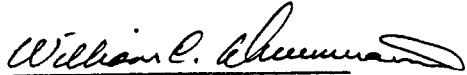
UNITED STATES DEPARTMENT OF THE INTERIOR
FISH AND WILDLIFE SERVICE
REALTY

STATE OF OREGON)
) ss
COUNTY OF MULTNOMAH)

I hereby certify that the attached map of the

Ronald Murphy, et al., Tract (26)

has been correctly platted from plats and other data obtained from the files of the Bureau of Land Management, Department of the Interior, and from notes and other data obtained from field surveys by the Fish and Wildlife Service; that the section and lot lines and other subdivision lines, as here shown, have been placed upon said map after careful consideration of all available data on the subject; and that all said data, as shown upon the attached map, have been checked by me and are correct to the best of my knowledge and belief.


William C. Drummond
Land Surveyor

Date: *April 2, 1991*

UNITED STATES DEPARTMENT OF THE INTERIOR
FISH AND WILDLIFE SERVICE
REALTY

CERTIFICATE OF OCCUPANCY
ASH MEADOWS NATIONAL WILDLIFE REFUGE
NYE COUNTY, NEVADA

I hereby certify that on February 21, 1991, I made a personal inspection of Tract (26), as shown on the attached map, and found evidence of present or past occupancy and use as indicated below:


TRACT (26) IS MOSTLY OPEN DESERT WITH A SMALL AREA OF UPLAND VEGETATION IN THE SOUTHEAST CORNER

THIS TRACT IS CROSSED BY DRAINAGE WATER FROM A GROUP OF SPRINGS.

THIS TRACT CONTAINS TWO DIRT ROADS THAT TRAVERSE THE TRACT THRU THE NORTHERN HALF.

VARIOUS FENCE LINES TRANSECT THIS TRACT.

Upon this tract of land, construction on various items was in progress from which a Mechanic's or Material Man's lien may arise.



William C. Drummond
Land Surveyor

Date: *April 2, 1991*