



GE
159 Plastics Avenue
Pittsfield, MA 01201
USA

Transmitted via Overnight Courier

September 11, 2008

Mr. Dean Tagliaferro
United States Environmental Protection Agency
c/o Weston Solutions, Inc.
10 Lyman Street
Pittsfield, MA 01201

**Re: Floodplain GE-Pittsfield/Housatonic River Site
Floodplain Residential and Non-Residential Properties Adjacent to 1½ Mile Reach of
Housatonic River (GECD710 and GECD720)
Summary of August 2008 Inspection Activities for the Remediated Phase 2 Floodplain
Properties**

Dear Mr. Tagliaferro:

On August 14, 2008, the General Electric Company (GE) performed its third post-remediation inspection of the remediated Phase 2 properties located within the floodplain adjacent to the 1½ Mile Reach of the Housatonic River. The Phase 2 floodplain properties at which GE conducted soil remediation actions consist of two residential properties (Parcels I8-4-201/202 and Parcels I8-4-2,-3,-4) and one non-residential property (Parcel I8-4-7), as shown on Figure 1. GE completed the remediation of these properties in October 2007. As part of this remediation, GE restored the affected portions of these properties with an herbaceous vegetative cover and planted trees on the two residential properties.

Previous post-remediation inspections were performed at these properties in October 2007 and May 2008. Those inspections were conducted in accordance with Section 6.3 of GE's approved *Revised Supplemental Soil Evaluation Report and Removal Design/Removal Action Work Plan Addendum for Selected Phase 2 Floodplain Properties Adjacent to the 1½ Mile Reach of Housatonic River* (Revised RD/RA Addendum, March 2007), as modified and supplemented with a number of activities based on discussions between GE and EPA relating to draft Final Completion Reports (FCRs) for the residential and non-residential floodplain properties adjacent to the 1½ Mile Reach. Summaries of these inspections were submitted to EPA in letters dated November 21, 2007 and June 20, 2008.

Consistent with previous inspections, the August 2008 inspection was performed for areas that were backfilled and restored during the implementation of the remediation actions and included an assessment of the planted vegetation. The inspection of such areas at the two residential properties (Parcels I8-4-2,-3,-4 and I8-4-201/202) was performed in accordance with the Post-Removal Site Control requirements specified in the final version of the *Final Completion Report for Removal Action for Housatonic River Floodplain – Current Residential Properties Adjacent to 1½ Mile Reach* (1½ Mile Residential Floodplain FCR), which was submitted to EPA on July 30, 2008 and approved by EPA on August 27, 2008. The inspection of non-residential Parcel I8-4-7 was performed in accordance with the Revised RD/RA Addendum, as modified by discussions between GE and EPA relating to the draft FCR for the 1½ Mile non-residential floodplain properties.

Summary of Inspection Activities

The August 2008 inspection included observations of the backfilled/restored areas, focusing on the following: (a) the effectiveness of erosion controls in areas where vegetation is not yet established; (b) any areas where excessive settlement has occurred relative to the surrounding areas; (c) any drainage or growth problems; (d) any areas of erosion; and (e) other conditions that could jeopardize the performance of the completed remediation actions (for example, burrows, vehicle ruts, unauthorized uses of areas, etc.). The inspection also evaluated whether the vegetative cover that had been planted or seeded in disturbed areas was growing as anticipated and providing the desired degree of erosion control.

In addition, the August 2008 inspection included observations of the trees planted as part of restoration activities at Parcels I8-4-201/202 and Parcels I8-4-2,-3,-4 to ensure that they are in good general health. Figure 2 contains the restoration planting plan for Parcels I8-4-201/202 and Parcels I8-4-2,-3,-4, as presented on Figure H-1 from the 1½ Mile Residential Floodplain FCR. Figure 2 also provides information regarding replanted trees, including the species, installation date, and size at the time of replanting. As shown on that figure, one sugar maple tree was replanted on Parcels I8-4-2,-3,-4 in July 2008.

Observations at these properties included a stem count of the planted trees (quantity per species per parcel) in good health and a stem count of trees, if any, that were dead or dying or showing evidence of stress within each property. (Since no trees were planted on Parcel I8-4-7, stem counts were not performed at that property.) The results of the observations were used to evaluate if all (100%) of the planted trees (as specified on Figure 2, including the replanted tree) are surviving. Additionally, each tree observed was measured to determine the average height and range of heights of each species of tree within each property. In conjunction with the tree observations, GE inspected the tree cages, guards, and stakes (where present) to ensure that these items were functioning to protect the trees from damage.

The August 2008 inspection also included observations of areas where the need for follow-up activities had been identified during the May 2008 inspection. These activities included monitoring a stressed flowering dogwood on Parcels I8-4-201/202, replacing one dead sugar maple on Parcels I8-4-2,-3,-4 (as noted above), and installing tree guards on all of the planted trees on Parcels I8-4-201/202 and Parcels I8-4-2,-3,-4.

The results of the August 2008 inspection are provided in an Inspection Summary and Checklist for each property subject to inspection. The form used in this inspection for the residential properties was the form included in the 1½ Mile Residential Floodplain FCR, and the form used for Parcel I8-4-7 was that developed for inclusion in the draft FCR for the 1½ Mile non-residential floodplain properties. The completed inspection forms for the August 2008 inspection are provided in Attachment A. Documentation of tree observations at Parcels I8-4-201/202 and Parcels I8-4-2,-3,-4 is provided in tables in Attachment B. These tables list, for each species at each of these properties, the number of trees observed, the height of each individual tree counted, the condition of each tree observed, and the condition of the associated tree cage, guard, or stake (where present).

Summary of Observations During Inspection

As indicated on the forms in Attachment A, the August 2008 inspection indicated that the backfilled/restored areas at the inspected properties were in good overall condition, that the herbaceous vegetation adjacent to the planted trees was growing as anticipated, and that the vegetation identified for follow-up monitoring in the May 2008 inspection was also in good condition. Tables B-1 through B-5 in Attachment B provide further information on the trees observed, including a listing of the total number of plantings and their height and condition. The results of the tree observations and measuring activities are summarized in the following table:

Tree Count Results								
Parcel	Species	Planted (or Replanted) ¹	Observed in Good Health	Observed Dead/Stressed	Avg Height (ft.)	Range of Heights (ft.)	Percent in Good Health (%)	Percent Survival (%) ²
I8-4-201/202	Black Cherry	1	1	0	5	--	100	100
	Flowering Dogwood	2	2	0	9.5	9-10	100	100
	Sugar Maple	10	10	0	14.6	13-16	100	100
I8-4-2,-3,-4	Crimson King Maple	1	1	0	14	--	100	100
	Sugar Maple	3 (1)	3	0	14.7	14-15	100	100

Notes:

1. The quantity of each species as listed in this column corresponds to the planted quantity identified on Figure H-1 from the 1½ Mile Residential Floodplain FCR and presented as Figure 2 to this letter, including any replanted trees (number shown in parentheses).
2. This column shows the percentage of trees that were alive relative to the planted quantity.

Based on the August 2008 observations at the Phase 2 properties, no further maintenance, repair, or replanting activities were identified, although the replanted maple tree on Parcels I8-4-2,-3,-4 was missing a tag identifying the species, installation date, and size at time of replanting. This tag will be replaced prior to the next inspection.

Schedule for Future Inspections

The next inspection of the remediated Phase 2 floodplain properties is scheduled for May 2009. Future inspections of these properties will be conducted in accordance with the applicable Post-Removal Site Control requirements specified in the relevant FCR (assuming that the FCR for the non-residential floodplain properties has been approved by the time of the next inspection). The backfilled/restored areas will be inspected annually (subject to EPA approval of a different frequency), as well as after severe storms. The revegetated areas will be inspected in May and August or September 2009 to assess the condition of the planted vegetation. However, the new tree installed on Parcels I8-4-2,-3,-4 in July 2008 will be inspected twice per year (in May and August or September) through August/September 2010. All future inspections will utilize the Inspection Summary and Checklist forms included in the relevant FCR. Within 30 days following each inspection, an inspection report will be prepared and submitted to EPA.

Please call me if you have any comments or questions.

Sincerely

Richard W. Gates /EGB

Richard W. Gates
Remediation Project Manager

Attachments

cc: Tim Conway, EPA
Rose Howell, EPA*
Holly Inglis, EPA
K.C. Mitkevicius, USACE
Linda Palmieri, Weston
Michael Gorski, MDEP (2 copies)
Susan Steenstrup, MDEP
Anna Symington, MDEP*
Jane Rothchild, MDEP*
Nancy E. Harper, MA AG*
Dale Young, MA EOEEA*
Mayor James Ruberto, City of Pittsfield

Jeffrey Bernstein, BCK Law, P.C.
Michael Carroll, GE*
Rod McLaren, GE*
Peter Wojcik, GE*
James Nuss, ARCADIS
James Bieke, Goodwin Procter
Property Owner - Parcels I8-4-201/202
Property Owner - Parcels I8-4-2,-3,-4
Public Information Repositories
GE Internal Repository

** cover letter only*

ARCADIS

Figures

CITY: SYR DIV/GRP: 141 DB: LAF KLS/DWM LD: DIMW PIC: (Opt) PM: (Repd) TM: (Opt) LVR: (Opt) ON: OFF=REF: 8/12/2008 11:47 AM ACADVER: 17.05 (LMS TECH) PAGESETUP: ----PLOTSTYLETABLE: PLT: FULLCTB PLOTTED: 8/12/2008 11:49 AM BY: POSENAUER, LISA
 G:\CAD\GE-CAD\N-ACT\B030911\0000\0001\DWG\AUG2008\PHASE2\30911B01.DWG LAYOUT: 1 SAVED: 8/12/2008 11:47 AM ACADVER: 17.05 (LMS TECH) PAGESETUP: ----PLOTSTYLETABLE: PLT: FULLCTB PLOTTED: 8/12/2008 11:49 AM BY: POSENAUER, LISA

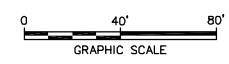
IMAGES: PROJECTNAME: 3091TX09 3091TX05 3091TX06 3091TX07 3091TX08



LEGEND

- BOUNDARY OF FLOODPLAIN PROPERTIES AS REVISED BY EPA (FOR PHASE 2)
- PROPERTY BOUNDARY
- BOUNDARY BETWEEN COMMONLY OWNED TAX PARCELS
- 18-4-4** PROPERTY ID
- 10 YEAR FLOODPLAIN
- VEGETATION
- INDEX ELEVATION CONTOUR
- INTERMEDIATE ELEVATION CONTOUR
- PAVED ROADWAY
- UNPAVED ROADWAY OR TRAIL
- 1 1/2 MILE REACH
- RESIDENTIAL FLOODPLAIN PROPERTIES - ACTUAL/POTENTIAL LAWN AREA, AS DESIGNATED IN SOW
- NON-RESIDENTIAL/NON-COMMERCIAL FLOODPLAIN PROPERTIES - NON-BANK AREA, AS DESIGNATED IN SOW
- LIMITS OF SOIL REMOVAL

- NOTES:**
1. THE BASE MAP FEATURES PRESENTED ON THIS FIGURE WERE PHOTOGRAMMETRICALLY MAPPED FROM APRIL 1990 AERIAL PHOTOGRAPHS.
 2. PARCEL IDENTIFICATION AND BOUNDARIES ARE BASED ON CITY OF PITTSFIELD TAX ASSESSORS' INFORMATION.
 3. THE 10 YEAR FLOODPLAIN LINE IS APPROXIMATE AND WAS DERIVED USING HYDRAULIC MODELING PERFORMED BY BLASLAND, BOUCK & LEE, INC. (1994) AND AVAILABLE TOPOGRAPHIC MAPPING.



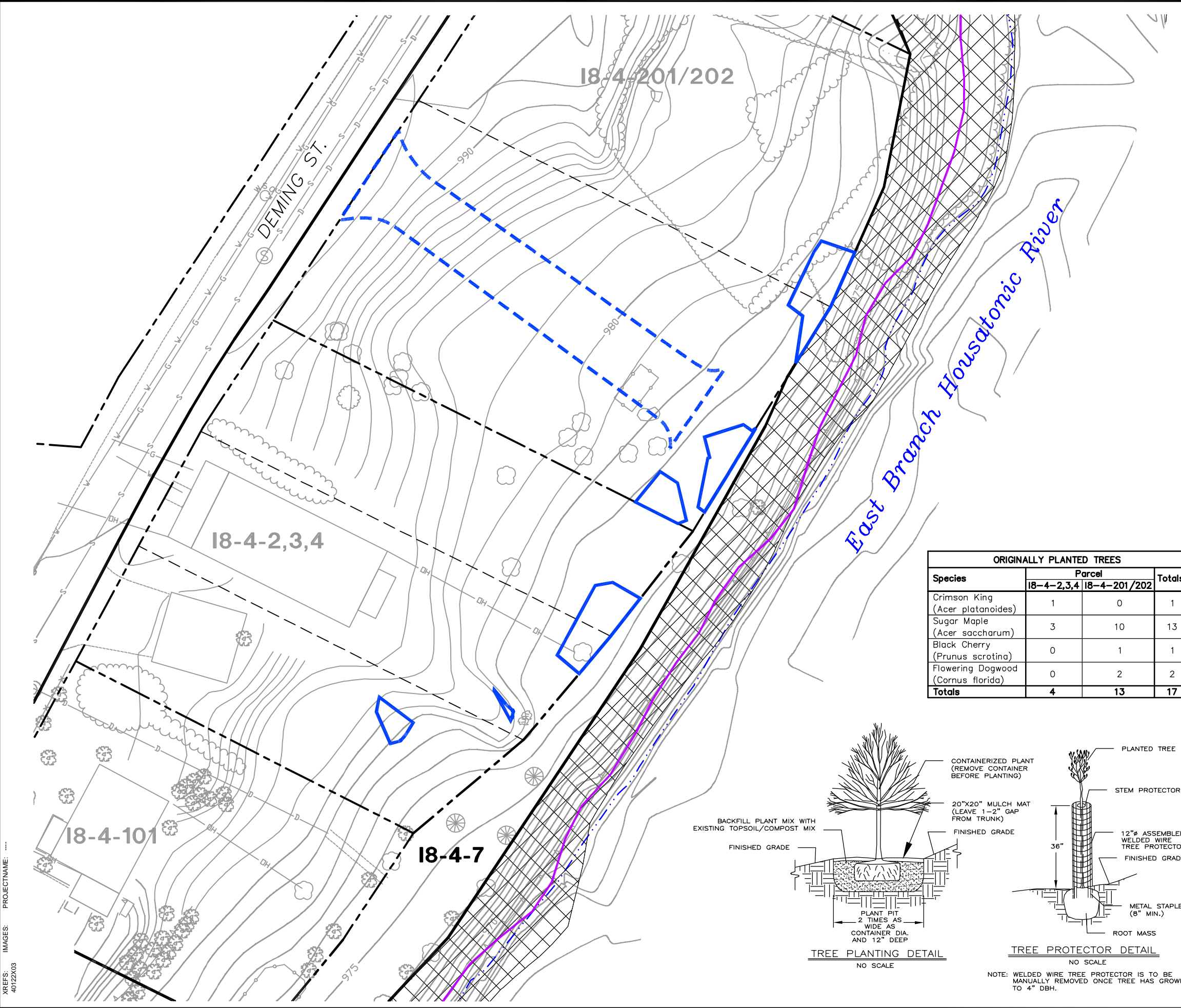
GENERAL ELECTRIC COMPANY
 PITTSFIELD, MASSACHUSETTS
AUGUST 2008 INSPECTION

SITE PLAN

ARCADIS

FIGURE 1

CITY: SYRACUSE DIV/GROUP: 141 DB: DMW/LAF/DMM LD: DMW PIC: P. FARR PM: A. CORBIN TM: S. ELLSWORTH LYR: ON="OFF"=REF: G:\CAD\GE-CAD\N-ACT\B0040122\0000000000\DWG\PLANT\40122G01.DWG LAYOUT: 2 SAVED: 9/9/2008 1:39 PM ACADVER: 17.05 (LMS TECH) PAGES: 2 PLOTSTYLETABLE: PLT\FULLCTB PLOTTED: 9/9/2008 1:39 PM BY: WODARCZYK, DAVID XREFS: 40122X03 IMAGES: PROJECTNAME: ...



LEGEND

- BOUNDARY OF FLOODPLAIN PROPERTIES AS REVISED BY EPA (FOR PHASE 2)
- - - APPROXIMATE PARCEL BOUNDARY
- - - BOUNDARY BETWEEN COMMONLY OWNED TAX PARCELS
- 18-4-201/202 RESIDENTIAL PROPERTY PARCEL ID
- 18-4-7 NON-RESIDENTIAL PROPERTY PARCEL ID
- 10 YEAR FLOODPLAIN
- × × × WIRE FENCE
- ○ ○ CHAIN LINK FENCE
- V — WATER LINE
- G — GAS LINE
- S — SANITARY SEWER
- D — DRAIN LINE
- OH — OVERHEAD ELECTRIC
- A — RETAINING WALL
- 980 — ELEVATION CONTOUR (1 FOOT CONTOUR INTERVAL)
- ⊗ ROCK
- ~ EDGE OF BUSHES/HEDGE
- ⊗ SHRUB
- ⊗ DECIDUOUS TREE
- ⊗ CONIFEROUS TREE
- ⊗ DRAIN MANHOLE
- ⊗ SANITARY MANHOLE
- ⊗ WATER SHUTOFF
- · - · - APPROXIMATE EDGE OF WATER
- ⊗ AREA ASSOCIATED WITH EPA'S 1 1/2 MILE REACH REMOVAL ACTION
- ⊗ SOIL REMOVAL AREAS SUBJECT TO INSPECTION
- · - · - APPROXIMATE LIMITS OF OTHER DISTURBED AREAS (E.G. STAGING AREAS, ACCESS ROADS, ETC.) - ALSO SUBJECT TO INSPECTION

ORIGINALLY PLANTED TREES

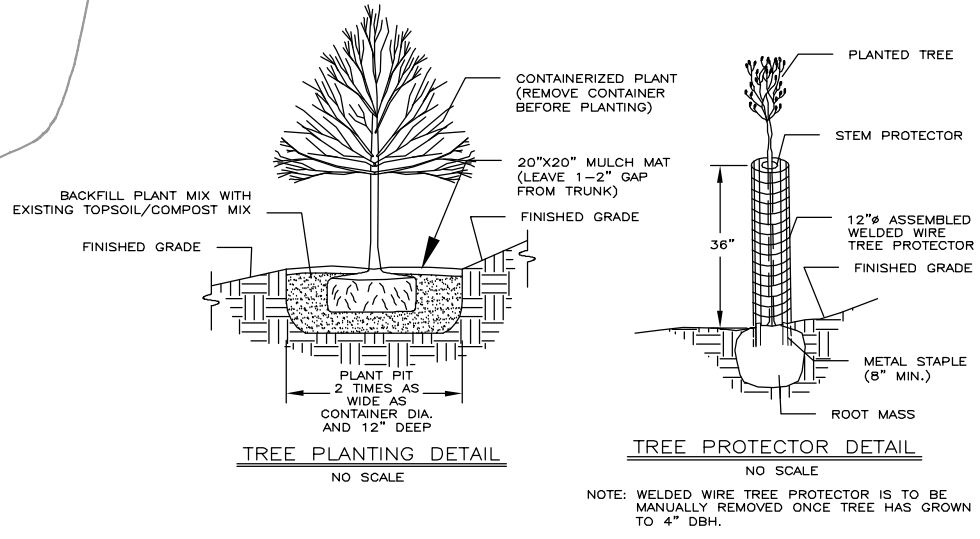
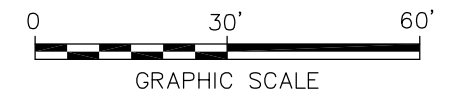
Species	Parcel		Totals
	18-4-2,3,4	18-4-201/202	
Crimson King (Acer platanoides)	1	0	1
Sugar Maple (Acer saccharum)	3	10	13
Black Cherry (Prunus scrotina)	0	1	1
Flowering Dogwood (Cornus florida)	0	2	2
Totals	4	13	17

REPLANTED TREES

Parcel	Species	Installation Date	Height (ft.) at time of replanting
18-4-2,3,4	Sugar Maple (Acer saccharum)	July 2008	15

NOTES:

- THE BASE MAP FEATURES PRESENTED ON THIS FIGURE FROM PHASE1BASE.DWG BY WESTON SOLUTIONS FOR THE DEPARTMENT OF THE ARMY CORPS OF ENGINEERS DATED 1/15/03.
- THE 10 YEAR FLOODPLAIN LINE IS APPROXIMATE AND WAS DERIVED USING HYDRAULIC MODELING PERFORMED BY BLASLAND, BOUCK & LEE, INC. (1994) AND AVAILABLE TOPOGRAPHIC MAPPING.



GENERAL ELECTRIC COMPANY
PITTSFIELD, MASSACHUSETTS
AUGUST 2008 INSPECTION

**RESTORATION PLANTING PLAN
FOR PHASE 2**

ARCADIS

FIGURE
2

ARCADIS

Attachment A

Completed Inspection Forms

INSPECTION SUMMARY AND CHECKLIST

**HOUSATONIC RIVER (1.5-MILE REACH)
RESIDENTIAL FLOODPLAIN PROPERTIES**

PARCEL I8-4-201/202

I. GENERAL INFORMATION

Inspection Date: 8/14/2008
Conducted By/Phone Number: Paolo Filippetti/(585) 385-0090 ext.35
Weather Conditions: Partly Cloudy, 80°F
Date of Last Inspection: 5/22/2008

II. INSPECTION SUMMARY

1. Confirm that Figure 6, 7, 8, 9, 10, or 11 (as they apply to the property being inspected) of the *Final Completion Report for Removal Action for Housatonic River Floodplain - Current Residential Properties Adjacent to 1-1/2 Mile Reach* (Final Completion Report) and the applicable as-built survey drawings included in Appendix B of that document have been reviewed.

- Confirmed

2. **Soil Backfill and Other Restored Areas** (Note any physical changes since last inspection; note evidence of any of the following: excessive settlement, soil erosion, drainage problems, burrows, vehicle ruts, unauthorized excavations, unauthorized uses of areas, etc.)

- All areas in good condition.

3. **Vegetation Area** (Note any physical changes since last inspection; note general condition of vegetative cover [e.g., evidence of stressed/sparse cover], other landscaping items [trees, shrubs, etc.] planted during restoration activities, tree guards, tree cages, and tree stakes; for Parcels I7-2-20, I7-2-44, I7-3-6, and I7-3-7, monitor the grass/herbaceous cover for evidence of stress until such time as the cover is adequately established and growing as anticipated; review the applicable restoration planting plan included in Appendix H of the *Final Completion Report* [for Phase 3, the trees/shrubs subject to inspection are listed on Table H-1 of Appendix H] and determine the percent survivorship of planted trees and shrubs subject to inspection; and measure and record the size of all trees and shrubs subject to inspection.)

- Vegetative cover in good condition.

- Tree observations are shown on Tables B-1, B-2, and B-3 in Attachment B; all trees observed are in good condition.

4. **Other Observations** (Confirm that repair/maintenance measures identified during prior inspection have been performed; note any other general observations, including parcel-specific restoration activities.)

- 13 tree guards referenced in the May 2008 inspection report have been installed.

- Stressed flowering dogwood referenced in the May 2008 inspection report is in good condition.

III. FOLLOW-UP MAINTENANCE AND REPAIR ACTIVITIES

- None

ATTACH ADDITIONAL INFORMATION AS APPROPRIATE

INSPECTION SUMMARY AND CHECKLIST

**HOUSATONIC RIVER (1.5-MILE REACH)
RESIDENTIAL FLOODPLAIN PROPERTIES**

PARCEL I8-4-2,3,4

I. GENERAL INFORMATION

Inspection Date: 8/14/2008
Conducted By/Phone Number: Paolo Filippetti/(585) 385-0090 ext.35
Weather Conditions: Partly Cloudy, 80°F
Date of Last Inspection: 5/22/2008

II. INSPECTION SUMMARY

1. Confirm that Figure 6, 7, 8, 9, 10, or 11 (as they apply to the property being inspected) of the *Final Completion Report for Removal Action for Housatonic River Floodplain - Current Residential Properties Adjacent to 1-1/2 Mile Reach* (Final Completion Report) and the applicable as-built survey drawings included in Appendix B of that document have been reviewed.

- Confirmed

2. **Soil Backfill and Other Restored Areas** (Note any physical changes since last inspection; note evidence of any of the following: excessive settlement, soil erosion, drainage problems, burrows, vehicle ruts, unauthorized excavations, unauthorized uses of areas, etc.)

- All areas in good condition.

3. **Vegetation Area** (Note any physical changes since last inspection; note general condition of vegetative cover [e.g., evidence of stressed/sparse cover], other landscaping items [trees, shrubs, etc.] planted during restoration activities, tree guards, tree cages, and tree stakes; for Parcels I7-2-20, I7-2-44, I7-3-6, and I7-3-7, monitor the grass/herbaceous cover for evidence of stress until such time as the cover is adequately established and growing as anticipated; review the applicable restoration planting plan included in Appendix H of the Final Completion Report [for Phase 3, the trees/shrubs subject to inspection are listed on Table H-1 of Appendix H] and determine the percent survivorship of planted trees and shrubs subject to inspection; and measure and record the size of all trees and shrubs subject to inspection.)

- Vegetative cover in good condition.

- Tree observations are shown on Tables B-4 and B-5 in Attachment B; all trees observed are in good condition.

4. **Other Observations** (Confirm that repair/maintenance measures identified during prior inspection have been performed; note any other general observations, including parcel-specific restoration activities.)

- Dead sugar maple identified in the May 2008 inspection report has been replaced.

- 4 tree guards referenced in the May 2008 inspection report have been installed.

III. FOLLOW-UP MAINTENANCE AND REPAIR ACTIVITIES

- Replace the tag on the replanted maple tree identifying the species, date of installation, and size at time of replanting.

ATTACH ADDITIONAL INFORMATION AS APPROPRIATE

INSPECTION SUMMARY AND CHECKLIST

**HOUSATONIC RIVER (1.5-MILE REACH)
NON-RESIDENTIAL FLOODPLAIN PROPERTIES**

PARCEL I8-4-7

I. GENERAL INFORMATION

Inspection Date: 8/14/2008
Conducted By/Phone Number: Paolo Filippetti/(585) 385-0090 ext.35
Weather Conditions: Partly Cloudy, 80°F
Date of Last Inspection: 5/22/2008

II. INSPECTION SUMMARY

1. Confirm that Figure 5, 6, or 7 (as they apply to the property being inspected) of the draft *Final Completion Report for Removal Action for Housatonic River Floodplain - Non-Residential Properties* (Final Completion Report) and the applicable as-built survey drawings included in Appendix B of that document have been reviewed.

- Confirmed

2. **Soil Backfill Areas** (Note any physical changes since last inspection; note evidence of any of the following: excessive settlement, soil erosion, drainage problems, burrows, vehicle ruts, unauthorized excavations, unauthorized uses of areas, etc.)

- All areas in good condition.

3. **Vegetation Area** (Note any physical changes since last inspection; note general condition of vegetative cover [e.g., evidence of stressed/sparse cover], other landscaping items [trees, shrubs, etc.] planted during restoration activities, tree guards, tree cages, and tree stakes; review the applicable restoration planting plan included in Appendix H of the Final Completion Report and determine: 1) a stem count consisting of planted and newly established trees/shrubs [quantity per species] in good health; and 2) a count of those trees/shrubs [quantity per species] that are dead, dying, or showing evidence of stress [if any].)

- Vegetative cover in good condition. (No trees planted.)

4. **Other Observations** (Confirm that repair/maintenance measures identified during prior inspection have been performed; note any other general observations, including parcel-specific restoration activities.)

- None

III. FOLLOW-UP MAINTENANCE AND REPAIR ACTIVITIES

- None

ATTACH ADDITIONAL INFORMATION AS APPROPRIATE

ARCADIS

Attachment B

Documentation of Tree/Shrub
Observations

TABLE B-1
SUMMARY OF TREE/SHRUB OBSERVATIONS - PARCEL I8-4-201/202 - BLACK CHERRY (*Prunus scrotina*)

**SUMMARY OF AUGUST 2008 INSPECTION ACTIVITIES FOR THE REMEDIATED PHASE 2 FLOODPLAIN PROPERTIES
 GENERAL ELECTRIC COMPANY - PITTSFIELD, MASSACHUSETTS**

Tree	Height (ft.)	Condition of Tree	Condition of Tree Cage, Guard, and Stakes (where present)
1	5	Good	Good

Average Height (ft.):	5
Height Range (ft.):	--
Total Tree Count:	1

TABLE B-2

SUMMARY OF TREE/SHRUB OBSERVATIONS - PARCEL I8-4-201/202 - FLOWERING DOGWOOD (*Cornus florida*)

**SUMMARY OF AUGUST 2008 INSPECTION ACTIVITIES FOR THE REMEDIATED PHASE 2 FLOODPLAIN PROPERTIES
GENERAL ELECTRIC COMPANY - PITTSFIELD, MASSACHUSETTS**

Tree	Height (ft.)	Condition of Tree	Condition of Tree Cage, Guard, and Stakes (where present)
1	10	Good	Good
2	9	Good	Good

Average Height (ft.):	9.5
Height Range (ft.):	9-10
Total Tree Count:	2

TABLE B-3
SUMMARY OF TREE/SHRUB OBSERVATIONS - PARCEL I8-4-201/202 - SUGAR MAPLE (*Acer saccharum*)

**SUMMARY OF AUGUST 2008 INSPECTION ACTIVITIES FOR THE REMEDIATED PHASE 2 FLOODPLAIN PROPERTIES
 GENERAL ELECTRIC COMPANY - PITTSFIELD, MASSACHUSETTS**

Tree	Height (ft.)	Condition of Tree	Condition of Tree Cage, Guard, and Stakes (where present)
1	16	Good	Good
2	14	Good	Good
3	16	Good	Good
4	16	Good	Good
5	14	Good	Good
6	13	Good	Good
7	13	Good	Good
8	14	Good	Good
9	14	Good	Good
10	16	Good	Good

Average Height (ft.):	14.6
Height Range (ft.):	13-16
Total Tree Count:	10

TABLE B-4

SUMMARY OF TREE/SHRUB OBSERVATIONS - PARCEL I8-4-2,-3,-4 - CRIMSON KING MAPLE (*Acer platanoides*)

**SUMMARY OF AUGUST 2008 INSPECTION ACTIVITIES FOR THE REMEDIATED PHASE 2 FLOODPLAIN PROPERTIES
GENERAL ELECTRIC COMPANY - PITTSFIELD, MASSACHUSETTS**

Tree	Height (ft.)	Condition of Tree	Condition of Tree Cage, Guard, and Stakes (where present)
1	14	Good	Good

Average Height (ft.):	14
Height Range (ft.):	--
Total Tree Count:	1

TABLE B-5
SUMMARY OF TREE/SHRUB OBSERVATIONS - PARCEL I8-4-2,-3,-4 - SUGAR MAPLE (*Acer saccharum*)

**SUMMARY OF AUGUST 2008 INSPECTION ACTIVITIES FOR THE REMEDIATED PHASE 2 FLOODPLAIN PROPERTIES
 GENERAL ELECTRIC COMPANY - PITTSFIELD, MASSACHUSETTS**

Tree	Height (ft.)	Condition of Tree	Condition of Tree Cage, Guard, and Stakes (where present)
1	15	Good	Good
2	14	Good	Good
3	15	Good	Good

Average Height (ft.):	14.7
Height Range (ft.):	14-15
Total Tree Count:	3