



GE
159 Plastics Avenue
Pittsfield, MA 01201
USA

Transmitted via Overnight Courier

October 16, 2008

Mr. Richard Hull
United States Environmental Protection Agency
1 Congress Street, Suite 1100 (HBO)
Boston, MA 02114-2023

**Re: GE-Pittsfield/Housatonic River Site
Former Oxbow Areas A and C (GEC410)
Summary of September 2008 Inspection Activities**

Dear Mr. Hull:

On September 19, 2008, the General Electric Company (GE) performed a post-remediation inspection at the properties within the Former Oxbow Areas A and C Removal Action Area (RAA) at which remediation was performed. At Former Oxbow Areas A and C (shown on Figure 1), GE conducted remediation activities at five properties – Parcels I8-23-4, I8-23-5, I8-23-6, I8-23-9, and I9-5-1 – completing those actions in October 2006. Vegetation restoration activities were conducted at these properties in accordance with the Revised Vegetation Restoration Plan for Former Oxbow Areas A and C, provided in Attachment 1 to GE's October 5, 2006 Addendum to Supplemental Information Package for this and other RAAs. These activities included the planting of trees on two properties – Parcels I8-23-4 and I8-23-6. Previous post-remediation inspections of these properties were performed in November 2006, May 2007, October 2007, and May 2008; and reports on those inspections were submitted to EPA.

The September 2008 inspection was performed in accordance with the Post-Removal Site Control requirements specified in the *Final Completion Report for the Former Oxbow Areas A and C Removal Action* (Final Completion Report), which was submitted to EPA on May 12, 2008 and approved by EPA on June 3, 2008. This inspection included observations of areas that were backfilled and restored during the implementation of the remediation actions and included an assessment of the planted vegetation.

Summary of Inspection Activities

The September 2008 inspection included observations of the backfilled/restored areas, focusing on the following: (a) any areas where excessive settlement has occurred relative to the surrounding areas; (b) any drainage or growth problems; and (c) other conditions that could jeopardize the completed remediation. In addition, the September 2008 inspection included visual observations of the grass/herbaceous covers to assess the condition of the vegetation, including any evidence of stressed or sparse cover, and to ensure that the vegetation is growing as anticipated.

The September 2008 inspection also included observations of the trees planted as part of restoration activities on Parcels I8-23-4 and I8-23-6 to ensure that they are in good general health. Figure 2 contains the restoration planting plan for Parcels I8-23-4 and I8-23-6, as presented on Figure 4 from the Final Completion Report. Figure 2 also provides information regarding replanted trees, including the species planted and their respective installation dates. As shown on that figure, one eastern hemlock tree was replanted on Parcel I8-23-6 in June 2008, following submission of the Final Completion Report.

Observations at these properties included a stem count of planted trees (quantity per species per parcel) in good health and a stem count of trees that were dead or dying or showing evidence of stress, within each property. (Since no trees were planted on Parcels I8-23-5, I8-23-9, and I9-5-1, stem counts were not performed at those properties). The results of these observations were used to evaluate if all (100%) of the planted trees (as specified on Figure 2, including the replanted tree) are surviving. Additionally, each tree observed was measured to determine the average height and range of heights of each species of tree within each property. In conjunction with the tree observations, GE inspected tree cages, tree guards, and tree stakes (where present) to ensure that these items were functioning to protect the trees from damage.

The September 2008 inspection also included observations of areas where the need for follow-up activities had been identified during the May 2008 inspection. These activities included: (a) repairing tree cages on three eastern cottonwood trees and one American elm tree on Parcel I8-23-4; (b) replacing one dead eastern hemlock on Parcel I8-23-6; (c) straightening the leaning Norway spruce on Parcel I8-23-6; (d) monitoring the other stressed Norway spruce on Parcel I8-23-6; and (e) repairing the erosion/sinkholes observed along the top of the riverbank on Parcel I8-23-6. It was determined that the repair and replacement of these activities listed above had been completed prior to the September 2008 inspection.

The results of the September 2008 inspection are provided in an Inspection Summary and Checklist for each property subject to inspection, using the form included in the Final Completion Report. The completed forms for the September 2008 inspection are included in Attachment A. Documentation of tree observations at Parcel I8-23-4 and Parcel I8-23-6 is provided in tables in Attachment B. These tables list, for each species at each parcel at which trees were planted, the number of trees observed, the height of each individual tree counted, the condition of each tree counted, and the condition of the associated tree guard, cage, or stakes (where present).

Summary of Observations During Inspection

As indicated on the attached forms, the September 2008 inspection indicated that the backfilled/restored areas and herbaceous vegetative cover at each property inspected were in good condition. The results of the tree counting, measuring, and observation activities at the two parcels where trees were planted are summarized in the following table:

Tree Count Results								
Parcel	Species	Planted (or Replanted) ¹	Observed in Good Health	Observed Dead/Stressed	Avg Height (ft.)	Range of Heights (ft.)	Percent in Good Health (%)	Percent Survival (%) ²
I8-23-4	American Elm	1	1	0	8	--	100	100
	Eastern Cottonwood	3(1)	2	0/1	12.3	5-16	67	100
	Red Maple	3(3)	2	0/1	6	6	67	100
I8-23-6	Eastern Hemlock	38 (3)	46	0	9.5	8-11	>100	>100
	Norway Spruce	14	14	0	14.6	11-18	100	100

Notes:

1. The quantity of each species as listed in this column corresponds to the planted quantity identified on Figure 4 from the Final Completion Report and presented as Figure 2 in this letter, including any replanted trees (number shown in parentheses).
2. This column shows the percentage of trees that were alive relative to the planted quantity.

The results of the tree observations indicated that the trees planted were in good health with the exception of two trees at Parcel I8-23-4: one stressed eastern cottonwood and one stressed red maple. These trees will be monitored during the next inspection. Also, the three eastern hemlocks replanted in June 2007, September 2007, and June 2008 on Parcel I8-23-6 were missing tags identifying the species, installation date, and size at time of replanting. These tags will be replaced prior to the next inspection. Finally, as indicated on the tables in Attachment B, the tree guards, cages, and stakes (where present) on the trees on Parcel I8-23-4 were in good condition. (The trees on Parcel I8-23-6 do not have tree guards, cages, or stakes.)

Schedule for Future Inspections

Future inspections of these properties will be conducted in accordance with the Post-Removal Site Control requirements included in the Final Completion Report. The backfilled/restored areas will be inspected annually in August or September (subject to EPA approval of a different frequency), as well as after severe storms. As noted in the Final Completion Report, the September 2008 inspection completed the required two-year monitoring period for the trees originally planted on Parcel I8-23-6. However, the two hemlocks replanted on that parcel in 2007 and the one hemlock replanted in June 2008 will be inspected again in May and August or September 2009. (GE does not believe that the hemlock replanted in June 2008 needs to be inspected in May 2010 because that tree was not required to be planted given that the percent survival of eastern hemlocks on Parcel I8-23-6 is greater than 100% of the quantity specified on the planting plan.) The plantings on Parcel I8-23-4 will be inspected again in May and August or September 2009 to complete the required two-year monitoring period. In the event that any additional trees are planted at either property, such trees will be tagged, added to Figure 2 (attached herein), and inspected twice per year for a two-year period after planting.

Future inspections will utilize the Inspection Summary and Checklist forms included in the Final Completion Report. Within 30 days following each inspection, an inspection report will be prepared and submitted to EPA.

Please call me if you have any comments or questions.

Sincerely

Richard W. Gates, ^{ELB}

Richard W. Gates
Remediation Project Manager

Attachments

cc: Dean Tagliaferro, EPA
Tim Conway, EPA
Holly Inglis, EPA
Rose Howell, EPA*
Linda Palmieri, Weston (2 copies)
K.C. Mitkevicius, USACE
Michael Gorski, MDEP (2 copies)
Susan Steenstrup, MDEP
Anna Symington, MDEP*
Jane Rothchild, MDEP*
Nancy E. Harper, MA AG*
Dale Young, MA EOEEA*
Mayor James Ruberto, City of Pittsfield

Michael Carroll, GE*
Rod McLaren, GE*
Peter Wojcik, GE*
James Nuss, ARCADIS
James Bieke, Goodwin Procter
Property Owner – Parcel I8-23-4
Property Owner – Parcels I8-23-6 & I9-5-1
Property Owner – Parcel I8-23-5
Property Owner – Parcel I8-23-9
Public Information Repositories
GE Internal Repository

** cover letter only*

ARCADIS

Figures

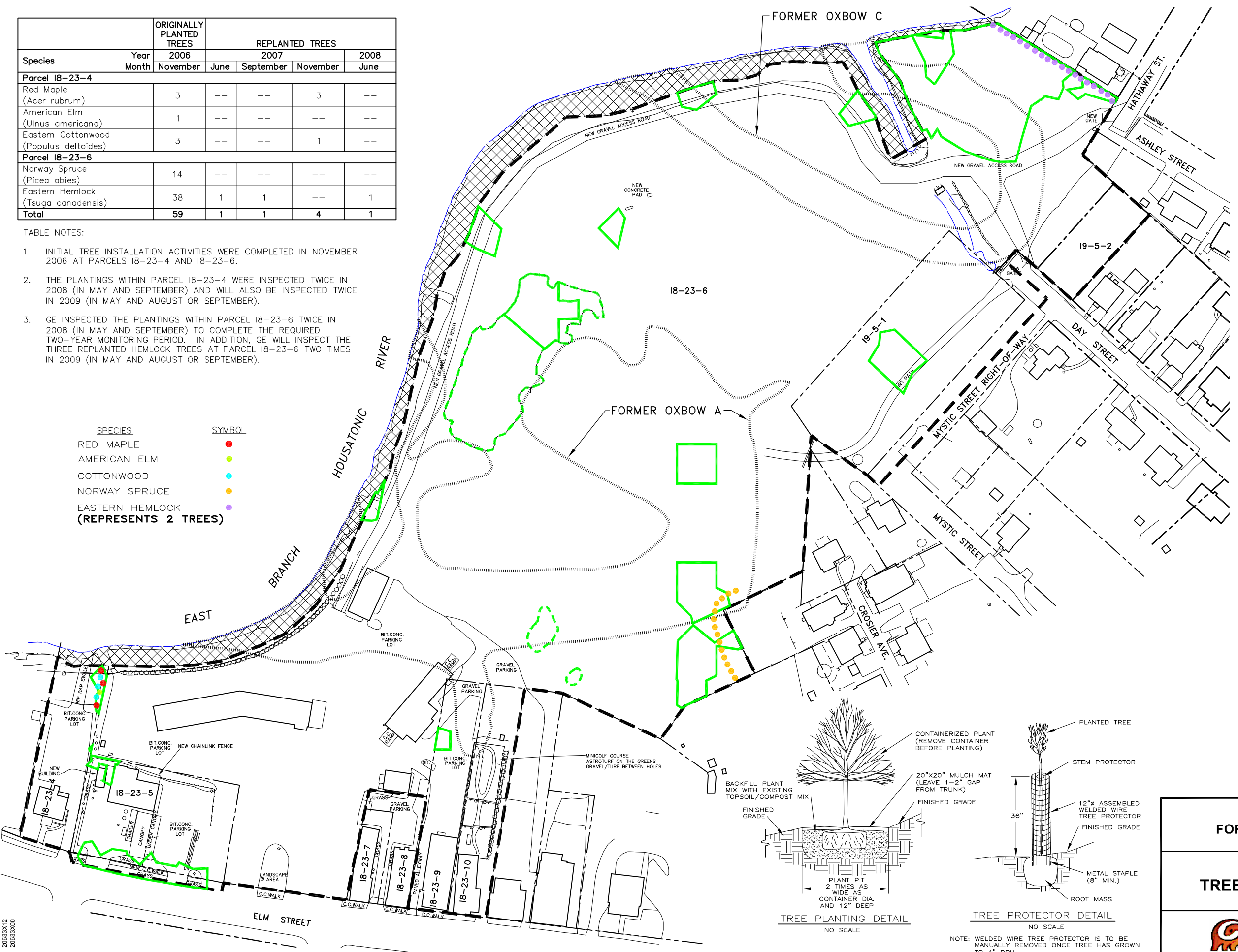
CITY:SYR DIM/GROUP:85 DB/DMM/LAF/DMM LD:DMW PIC:(Opt) LVR(Opt)F=OFF=REF*FRZN
G/CAD/GE-CAD/ANACT/B/0002063300000013/DWG/FINAL/20633010.DWG LAYOUT: 2
XREFS: 210633X12 210633X00

Species	Year Month	ORIGINALLY PLANTED TREES		REPLANTED TREES			
		2006		2007			2008
		November	June	September	November	June	
Parcel 18-23-4							
Red Maple (Acer rubrum)	3	--	--	3	--	--	
American Elm (Ulnus americana)	1	--	--	--	--	--	
Eastern Cottonwood (Populus deltoides)	3	--	--	1	--	--	
Parcel 18-23-6							
Norway Spruce (Picea abies)	14	--	--	--	--	--	
Eastern Hemlock (Tsuga canadensis)	38	1	1	--	--	1	
Total	59	1	1	4	1	1	

TABLE NOTES:

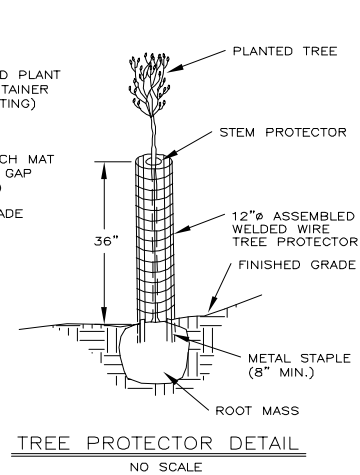
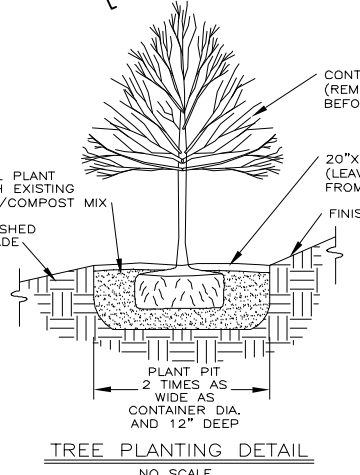
- INITIAL TREE INSTALLATION ACTIVITIES WERE COMPLETED IN NOVEMBER 2006 AT PARCELS 18-23-4 AND 18-23-6.
- THE PLANTINGS WITHIN PARCEL 18-23-4 WERE INSPECTED TWICE IN 2008 (IN MAY AND SEPTEMBER) AND WILL ALSO BE INSPECTED TWICE IN 2009 (IN MAY AND AUGUST OR SEPTEMBER).
- GE INSPECTED THE PLANTINGS WITHIN PARCEL 18-23-6 TWICE IN 2008 (IN MAY AND SEPTEMBER) TO COMPLETE THE REQUIRED TWO-YEAR MONITORING PERIOD. IN ADDITION, GE WILL INSPECT THE THREE REPLANTED HEMLOCK TREES AT PARCEL 18-23-6 TWO TIMES IN 2009 (IN MAY AND AUGUST OR SEPTEMBER).

SPECIES	SYMBOL
RED MAPLE	●
AMERICAN ELM	●
COTTONWOOD	●
NORWAY SPRUCE	●
EASTERN HEMLOCK (REPRESENTS 2 TREES)	●



- LEGEND:
- APPROXIMATE REMOVAL ACTION AREA BOUNDARY
 - PROPERTY BOUNDARY
 - 18-23-6 PROPERTY ID
 - EDGE OF WATER
 - APPROXIMATE FORMER OXBOW/LOW LYING AREA
 - BUILDING
 - AREA INCLUDED AS PART OF 1 1/2-MILE REACH REMOVAL ACTION
 - LIMITS OF SOIL REMOVAL TO ACHIEVE PERFORMANCE STANDARDS
 - LIMITS OF FORMER SOIL OR LOAM PILES

NOTE:
1. MAPPING IS BASED ON SITE SURVEYS BY HILL ENGINEERS, ARCHITECTS & PLANNERS, INC., DATED 11/4/04 AND 1/29/07.



NOTE: WELDED WIRE TREE PROTECTOR IS TO BE MANUALLY REMOVED ONCE TREE HAS GROWN TO 4" DBH.

GENERAL ELECTRIC COMPANY
PITTSFIELD, MASSACHUSETTS
**FORMER OXBOW AREAS A AND C
REMOVAL ACTION**

**SUMMARY OF
TREE RESTORATION ACTIVITIES**

FIGURE
2

ARCADIS

Attachments

ARCADIS

Attachment A

Completed Inspection Forms

INSPECTION SUMMARY AND CHECKLIST

FORMER OXBOW AREAS A AND C

PARCEL I8-23-4

I. GENERAL INFORMATION

Inspection Date: 9/19/2008
Conducted By/Phone Number: Gregg Rabasco / (413) 822-1184
Weather Conditions: Sunny, 65°F
Date of Last Inspection: 5/29/2008

II. INSPECTION SUMMARY

1. Confirm that Figures 3 and 4 from the Final Completion Report and the as-built survey drawing included in Appendix C of the Final Completion Report (and any alternative plan proposed by GE) have been reviewed.

- Confirmed

2. **Soil Backfill Areas** (Note any physical changes since last inspection; note evidence of any of the following: excessive settlement, soil erosion, surface water ponding, burrows, vehicle ruts, unauthorized excavations, unauthorized uses of areas, erosion around drainage outlets, drainage swales, or edges of paved areas, etc.)

- All areas in good condition.

3. **Vegetation Area** (Note any physical changes since last inspection; note general condition of vegetative cover [e.g., evidence of stressed/sparse cover], other landscaping items [trees, shrubs, etc.] planted during restoration activities, tree guards, tree cages, and tree stakes; review the restoration planting plan [Figure 4 of the Final Completion Report] and determine the percent survivorship of planted trees; and measure and record the size of all trees subject to inspection.)

- Vegetative cover in good condition.

- Tree observations are shown in Tables B-1 through B-3 in Attachment B:

* 2 red maples in good condition; one stressed red maple observed.

* 2 eastern cottonwoods in good condition; one stressed eastern cottonwood observed.

* 1 American elm in good condition.

4. **Areas Potentially Susceptible to Erosion** (Inspect any other areas that are potentially subject to erosion as a result of the remediation, including drainage outlets, drainage swales, and edges of pavement located within the limits of the soil removal areas, and note evidence of any erosion. Include, where relevant, an inspection of the drainage swales on Parcels I8-23-4 (one swale) and I8-23-6 (3 swales), the drainage outlets on Parcel I8-23-6 (2 outlets); verify the integrity of these structures and evaluate whether drainage through or discharges from these outlets are causing erosion; verify that there has been no significant movement of riprap or reduction in riprap thickness that threatens the stability of the riprapped swale or drainage outlets, or results in the erosion of underlying soils or sediment or results in the exposure of underlying geotextile fabric [unless such fabric overlays concrete].)

- All areas in good condition.

5. **Other Observations** (Confirm that repair/maintenance measures identified during prior inspection have been performed; note any other general observations, including parcel-specific restoration activities.)

- Tree cages on three eastern cottonwood trees and one American elm were repaired.

III. FOLLOW-UP MAINTENANCE AND REPAIR ACTIVITIES

- Monitor one stressed red maple and one stressed eastern cottonwood.

ATTACH ADDITIONAL INFORMATION AS APPROPRIATE

INSPECTION SUMMARY AND CHECKLIST

FORMER OXBOW AREAS A AND C

PARCEL I8-23-5

I. GENERAL INFORMATION

Inspection Date: 9/19/2008
Conducted By/Phone Number: Gregg Rabasco / (413) 822-1184
Weather Conditions: Sunny, 65°F
Date of Last Inspection: 5/29/2008

II. INSPECTION SUMMARY

1. Confirm that Figures 3 and 4 from the Final Completion Report and the as-built survey drawing included in Appendix C of the Final Completion Report (and any alternative plan proposed by GE) have been reviewed.
- Confirmed

2. **Soil Backfill Areas** (Note any physical changes since last inspection; note evidence of any of the following: excessive settlement, soil erosion, surface water ponding, burrows, vehicle ruts, unauthorized excavations, unauthorized uses of areas, erosion around drainage outlets, drainage swales, or edges of paved areas, etc.)
- All areas in good condition.

3. **Vegetation Area** (Note any physical changes since last inspection; note general condition of vegetative cover [e.g., evidence of stressed/sparse cover], other landscaping items [trees, shrubs, etc.] planted during restoration activities, tree guards, tree cages, and tree stakes; review the restoration planting plan [Figure 4 of the Final Completion Report] and determine the percent survivorship of planted trees; and measure and record the size of all trees subject to inspection.)
- Vegetative cover in good condition. (No trees planted.)

4. **Areas Potentially Susceptible to Erosion** (Inspect any other areas that are potentially subject to erosion as a result of the remediation, including drainage outlets, drainage swales, and edges of pavement located within the limits of the soil removal areas, and note evidence of any erosion. Include, where relevant, an inspection of the drainage swales on Parcels I8-23-4 (one swale) and I8-23-6 (3 swales), the drainage outlets on Parcel I8-23-6 (2 outlets); verify the integrity of these structures and evaluate whether drainage through or discharges from these outlets are causing erosion; verify that there has been no significant movement of riprap or reduction in riprap thickness that threatens the stability of the riprapped swale or drainage outlets, or results in the erosion of underlying soils or sediment or results in the exposure of underlying geotextile fabric [unless such fabric overlays concrete].)
- NA

5. **Other Observations** (Confirm that repair/maintenance measures identified during prior inspection have been performed; note any other general observations, including parcel-specific restoration activities.)
- Sparse grass cover between the sidewalk and Elm Street in good condition.

III. FOLLOW-UP MAINTENANCE AND REPAIR ACTIVITIES

- None

ATTACH ADDITIONAL INFORMATION AS APPROPRIATE

INSPECTION SUMMARY AND CHECKLIST

FORMER OXBOW AREAS A AND C

PARCEL I8-23-6

I. GENERAL INFORMATION

Inspection Date: 9/19/2008
Conducted By/Phone Number: Gregg Rabasco / (413) 822-1184
Weather Conditions: Sunny, 65°F
Date of Last Inspection: 5/29/2008

II. INSPECTION SUMMARY

1. Confirm that Figures 3 and 4 from the Final Completion Report and the as-built survey drawing included in Appendix C of the Final Completion Report (and any alternative plan proposed by GE) have been reviewed.
- Confirmed

2. **Soil Backfill Areas** (Note any physical changes since last inspection; note evidence of any of the following: excessive settlement, soil erosion, surface water ponding, burrows, vehicle ruts, unauthorized excavations, unauthorized uses of areas, erosion around drainage outlets, drainage swales, or edges of paved areas, etc.)
- All areas in good condition.

3. **Vegetation Area** (Note any physical changes since last inspection; note general condition of vegetative cover [e.g., evidence of stressed/sparse cover], other landscaping items [trees, shrubs, etc.] planted during restoration activities, tree guards, tree cages, and tree stakes; review the restoration planting plan [Figure 4 of the Final Completion Report] and determine the percent survivorship of planted trees; and measure and record the size of all trees subject to inspection.)
- Vegetative cover in good condition.
- Tree observations are shown in Tables B-4 and B-5 in Attachment B; all trees in good condition.
- Three replanted eastern hemlocks are missing tags.

4. **Areas Potentially Susceptible to Erosion** (Inspect any other areas that are potentially subject to erosion as a result of the remediation, including drainage outlets, drainage swales, and edges of pavement located within the limits of the soil removal areas, and note evidence of any erosion. Include, where relevant, an inspection of the drainage swales on Parcels I8-23-4 (one swale) and I8-23-6 (3 swales), the drainage outlets on Parcel I8-23-6 (2 outlets); verify the integrity of these structures and evaluate whether drainage through or discharges from these outlets are causing erosion; verify that there has been no significant movement of riprap or reduction in riprap thickness that threatens the stability of the riprapped swale or drainage outlets, or results in the erosion of underlying soils or sediment or results in the exposure of underlying geotextile fabric [unless such fabric overlays concrete].)
- All areas in good condition.

5. **Other Observations** (Confirm that repair/maintenance measures identified during prior inspection have been performed; note any other general observations, including parcel-specific restoration activities.)
- Erosion/sinkholes observed along the top of the riverbank was repaired.
- Leaning Norway spruce was straightened.
- One eastern hemlock was planted in June 2008.

III. FOLLOW-UP MAINTENANCE AND REPAIR ACTIVITIES

- Tag the three replanted eastern hemlock trees.

ATTACH ADDITIONAL INFORMATION AS APPROPRIATE

INSPECTION SUMMARY AND CHECKLIST

FORMER OXBOW AREAS A AND C

PARCEL I8-23-9

I. GENERAL INFORMATION

Inspection Date: 9/19/2008
Conducted By/Phone Number: Gregg Rabasco / (413) 822-1184
Weather Conditions: Sunny, 65°F
Date of Last Inspection: 5/29/2008

II. INSPECTION SUMMARY

1. Confirm that Figures 3 and 4 from the Final Completion Report and the as-built survey drawing included in Appendix C of the Final Completion Report (and any alternative plan proposed by GE) have been reviewed.
- Confirmed

2. **Soil Backfill Areas** (Note any physical changes since last inspection; note evidence of any of the following: excessive settlement, soil erosion, surface water ponding, burrows, vehicle ruts, unauthorized excavations, unauthorized uses of areas, erosion around drainage outlets, drainage swales, or edges of paved areas, etc.)
- All areas in good condition.

3. **Vegetation Area** (Note any physical changes since last inspection; note general condition of vegetative cover [e.g., evidence of stressed/sparse cover], other landscaping items [trees, shrubs, etc.] planted during restoration activities, tree guards, tree cages, and tree stakes; review the restoration planting plan [Figure 4 of the Final Completion Report] and determine the percent survivorship of planted trees; and measure and record the size of all trees subject to inspection.)
- NA (no vegetation was planted as part of restoration activities at this parcel).

4. **Areas Potentially Susceptible to Erosion** (Inspect any other areas that are potentially subject to erosion as a result of the remediation, including drainage outlets, drainage swales, and edges of pavement located within the limits of the soil removal areas, and note evidence of any erosion. Include, where relevant, an inspection of the drainage swales on Parcels I8-23-4 (one swale) and I8-23-6 (3 swales), the drainage outlets on Parcel I8-23-6 (2 outlets); verify the integrity of these structures and evaluate whether drainage through or discharges from these outlets are causing erosion; verify that there has been no significant movement of riprap or reduction in riprap thickness that threatens the stability of the riprapped swale or drainage outlets, or results in the erosion of underlying soils or sediment or results in the exposure of underlying geotextile fabric [unless such fabric overlays concrete].)
- NA

5. **Other Observations** (Confirm that repair/maintenance measures identified during prior inspection have been performed; note any other general observations, including parcel-specific restoration activities.)
- None

III. FOLLOW-UP MAINTENANCE AND REPAIR ACTIVITIES

- None

ATTACH ADDITIONAL INFORMATION AS APPROPRIATE

INSPECTION SUMMARY AND CHECKLIST

FORMER OXBOW AREAS A AND C

PARCEL I9-5-1

I. GENERAL INFORMATION

Inspection Date: 9/19/2008
Conducted By/Phone Number: Gregg Rabasco / (413) 822-1184
Weather Conditions: Sunny, 65°F
Date of Last Inspection: 5/29/2008

II. INSPECTION SUMMARY

1. Confirm that Figures 3 and 4 from the Final Completion Report and the as-built survey drawing included in Appendix C of the Final Completion Report (and any alternative plan proposed by GE) have been reviewed.
- Confirmed

2. **Soil Backfill Areas** (Note any physical changes since last inspection; note evidence of any of the following: excessive settlement, soil erosion, surface water ponding, burrows, vehicle ruts, unauthorized excavations, unauthorized uses of areas, erosion around drainage outlets, drainage swales, or edges of paved areas, etc.)
- All areas in good condition.

3. **Vegetation Area** (Note any physical changes since last inspection; note general condition of vegetative cover [e.g., evidence of stressed/sparse cover], other landscaping items [trees, shrubs, etc.] planted during restoration activities, tree guards, tree cages, and tree stakes; review the restoration planting plan [Figure 4 of the Final Completion Report] and determine the percent survivorship of planted trees; and measure and record the size of all trees subject to inspection.)
- Vegetative cover in good condition. (No trees planted.)

4. **Areas Potentially Susceptible to Erosion** (Inspect any other areas that are potentially subject to erosion as a result of the remediation, including drainage outlets, drainage swales, and edges of pavement located within the limits of the soil removal areas, and note evidence of any erosion. Include, where relevant, an inspection of the drainage swales on Parcels I8-23-4 (one swale) and I8-23-6 (3 swales), the drainage outlets on Parcel I8-23-6 (2 outlets); verify the integrity of these structures and evaluate whether drainage through or discharges from these outlets are causing erosion; verify that there has been no significant movement of riprap or reduction in riprap thickness that threatens the stability of the riprapped swale or drainage outlets, or results in the erosion of underlying soils or sediment or results in the exposure of underlying geotextile fabric [unless such fabric overlays concrete].)
- NA

5. **Other Observations** (Confirm that repair/maintenance measures identified during prior inspection have been performed; note any other general observations, including parcel-specific restoration activities.)
- None

III. FOLLOW-UP MAINTENANCE AND REPAIR ACTIVITIES

- None

ATTACH ADDITIONAL INFORMATION AS APPROPRIATE

ARCADIS

Attachment B

Documentation of Tree/Shrub
Observations

TABLE B-1
SUMMARY OF TREE OBSERVATIONS - PARCEL I8-23-4 - AMERICAN ELM (*ULNUS AMERICANA*)

**SUMMARY OF SEPTEMBER 2008 INSPECTION ACTIVITIES FOR THE FORMER OXBOW AREAS A AND C
 GENERAL ELECTRIC COMPANY - PITTSFIELD, MASSACHUSETTS**

Tree/Shrub	Height (ft.)	Condition of Tree	Condition of Tree Cage, Guard, and Stakes (where present)
1	8	Good	Good

Average Height (ft.):	8
Height Range (ft.):	--
Total Tree Count:	1

**TABLE B-2
SUMMARY OF TREE OBSERVATIONS - PARCEL I8-23-4 - EASTERN COTTONWOOD (*POPULUS DELTOIDES*)**

**SUMMARY OF SEPTEMBER 2008 INSPECTION ACTIVITIES FOR THE FORMER OXBOW AREAS A AND C
GENERAL ELECTRIC COMPANY - PITTSFIELD, MASSACHUSETTS**

Tree/Shrub	Height (ft.)	Condition of Tree	Condition of Tree Cage, Guard, and Stakes (where present)
1	5	Stressed	Good
2	16	Good	Good
3	16	Good	Good

Average Height (ft.):	12.3
Height Range (ft.):	5-16
Total Tree Count:	3

TABLE B-3
SUMMARY OF TREE OBSERVATIONS - PARCEL I8-23-4 - RED MAPLE (*ACER RUBRUM*)

**SUMMARY OF SEPTEMBER 2008 INSPECTION ACTIVITIES FOR THE FORMER OXBOW AREAS A AND C
GENERAL ELECTRIC COMPANY - PITTSFIELD, MASSACHUSETTS**

Tree/Shrub	Height (ft.)	Condition of Tree	Condition of Tree Cage, Guard, and Stakes (where present)
1	6	Good	Good
2	6	Stressed	Good
3	6	Good	Good

Average Height (ft.):	6
Height Range (ft.):	6
Total Tree Count:	3

TABLE B-4
SUMMARY OF TREE OBSERVATIONS - PARCEL I8-23-6 - EASTERN HEMLOCK (*TSUGA CANADENSIS*)
SUMMARY OF SEPTEMBER 2008 INSPECTION ACTIVITIES FOR THE FORMER OXBOW AREAS A AND C
GENERAL ELECTRIC COMPANY - PITTSFIELD, MASSACHUSETTS

Tree/Shrub	Height (ft.)	Condition of Tree	Condition of Tree Cage, Guard, and Stakes (where present)
1	9	Good	NA
2	11	Good	NA
3	9	Good	NA
4	9	Good (needs 6/08 tag)	NA
5	8	Good	NA
6	10	Good	NA
7	10	Good	NA
8	9	Good	NA
9	10	Good	NA
10	9	Good	NA
11	9	Good	NA
12	10	Good	NA
13	9	Good	NA
14	9	Good	NA
15	9	Good	NA
16	9	Good	NA
17	8	Good	NA
18	9	Good	NA
19	8	Good	NA
20	9	Good	NA
21	10	Good	NA
22	10	Good	NA
23	9	Good	NA
24	11	Good	NA
25	10	Good	NA
26	9	Good	NA
27	9	Good	NA
28	11	Good	NA
29	9	Good (needs 6/07 tag)	NA
30	10	Good	NA
31	10	Good	NA
32	10	Good	NA
33	9	Good (needs 9/07 tag)	NA
34	9	Good	NA
35	10	Good	NA
36	9	Good	NA
37	10	Good	NA
38	9	Good	NA
39	8	Good	NA
40	9	Good	NA
41	10	Good	NA
42	10	Good	NA
43	10	Good	NA
44	11	Good	NA
45	11	Good	NA
46	11	Good	NA

Average Height (ft.):	9.5
Height Range (ft.):	8-11
Total Tree Count:	46

**TABLE B-5
SUMMARY OF TREE OBSERVATIONS - PARCEL I8-23-6 - NORWAY SPRUCE (*PICEA ABIES*)**

**SUMMARY OF SEPTEMBER 2008 INSPECTION ACTIVITIES FOR THE FORMER OXBOW AREAS A AND C
GENERAL ELECTRIC COMPANY - PITTSFIELD, MASSACHUSETTS**

Tree/Shrub	Height (ft.)	Condition of Tree	Condition of Tree Cage, Guard, and Stakes (where present)
1	14	Good	NA
2	14	Good	NA
3	17	Good	NA
4	17	Good	NA
5	12	Good	NA
6	14	Good	NA
7	16	Good	NA
8	15	Good	NA
9	16	Good	NA
10	14	Good	NA
11	18	Good	NA
12	13	Good	NA
13	14	Good	NA
14	11	Good	NA

Average Height (ft.):	14.6
Height Range (ft.):	11-18
Total Tree Count:	14