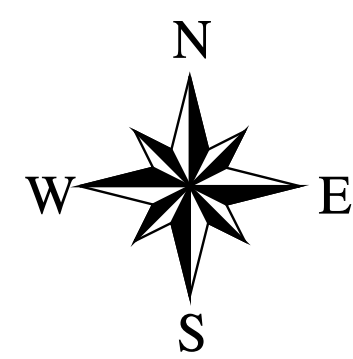
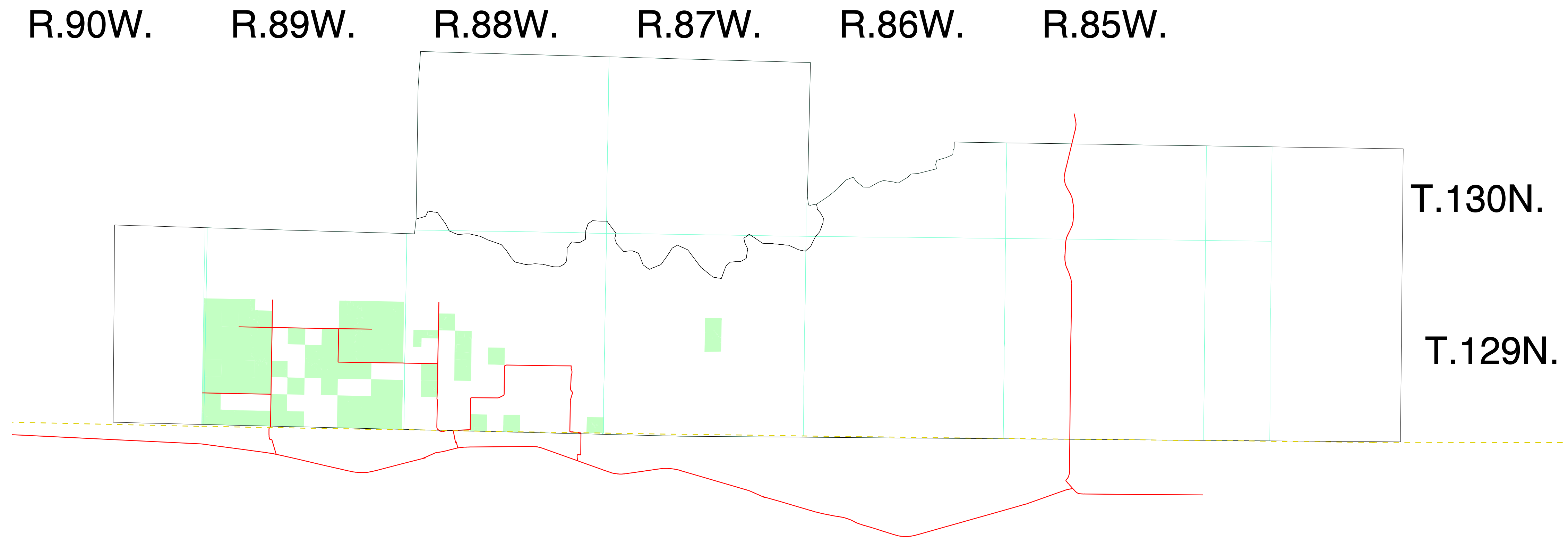




Cedar River National Grassland

Oil & Gas Stipulations FEIS Alternative 3

Lease Stipulations For Federal Minerals	Surface Ownership	Acres
Standard Lease Terms	NF	1311
Standard Lease Terms	NON-NF	11243



4 0 4 8 Miles

1 : 126,720
1/2 inch = 1 mile

The U.S. Department of Agriculture (USDA) prohibits discrimination in all its programs and activities on the basis of race, color, national origin, gender, religion, age, disability, political beliefs, sexual orientation, and marital or family status. (Not all prohibited bases apply to all programs). Persons with disabilities who require alternative means for communication of program information (Braille, large print, audio tape, etc.) should contact USDA's TARGET Center at (202) 720-2600 (Voice and TDD).

To file a complaint of discrimination write USDA, Director, Office of Civil Rights, Room 326-W, Whitten Building, 14th and Independence Avenue, SW Washington, DC 20250-9410 or call (202) 720-5964 (Voice or TDD). USDA is an equal opportunity provider and employer.

This GIS product was compiled from various sources and may be corrected, updated, modified, or replaced at any time. For more information contact:

USDA Forest Service
125 North Main
Chadron NE 69337
(308) 432-0300

/sfiles/plan/products/custer/griver/minerals/oil_gas/og_feis_grcr.apr
og_feis_3_grcr.rtl

1/3/2001

FINAL

State Boundary line between North & South Dakota

Administrative Boundaries

Major Highways

Township & Range

Lease Stipulations

Not Admin Available

No Lease

No Surface Occupancy

Controlled Surface Use

Paleo Controlled Surf Use

Standard Lease Terms

