



# Fire and Wind Symposium

Setting the Stage

# Superior National Forest 1909





# Joe Fitzwater – 1910 to 1912

*first Superior National Forest Supervisor*

## His first impression:

*"It was a wonderful backwoods country with nobody back in there. Most of it had been logged and burned over. It was mostly jack pine with very little white pine, and a few shrubs here and there."*



# Joe Fitzwater – 1910 to 1912

*first Superior National Forest Supervisor*

**Did you ever realize this might be one of the top recreation areas in the country one day?**

*"No, there was practically no recreation here. I was more interested in getting some timber back growing here than anything else."*





# Joe Fitzwater – 1910 to 1912

*first Superior National Forest Supervisor*

**How does the country compare in  
1970 to 1910?**

*"There's no comparison. It's all green  
virgin-looking forest now. It's not one of  
those vacant, dug over, logged over lands.  
It's just green and full. I'm impressed that  
we could have such a change."*



# Forest Plans and Fire Mgt Plans

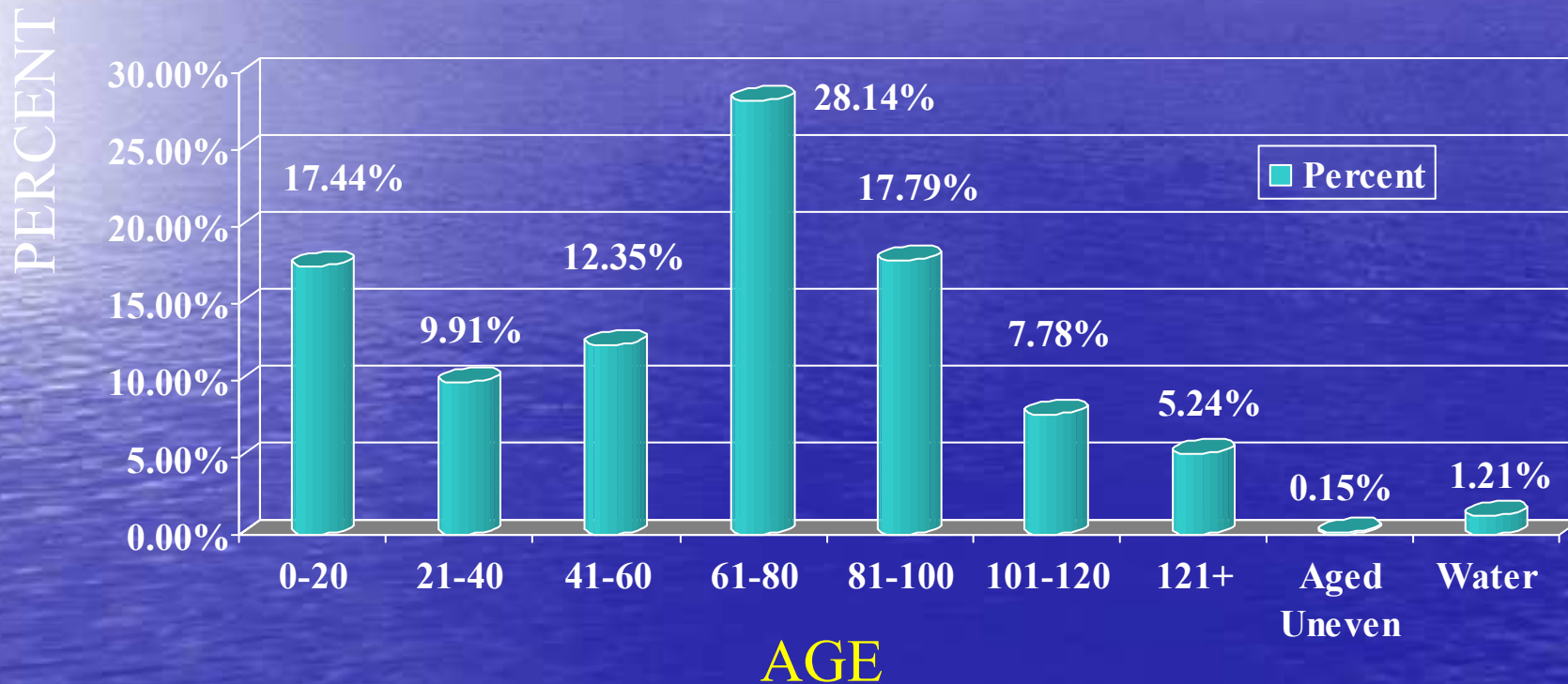
- Healthy Forests
- Growing use of Forests
- Wide fire intervals
- Simple fires
- Smokey Bear
- 10 O'Clock Policy



# What has Changed?

- Age of the Forest
- Cost of fire suppression
- Better information, Lessons learned
- Climate cycles
- National Direction

# Age Class Distribution



1993

\*Does not include the BWCAW

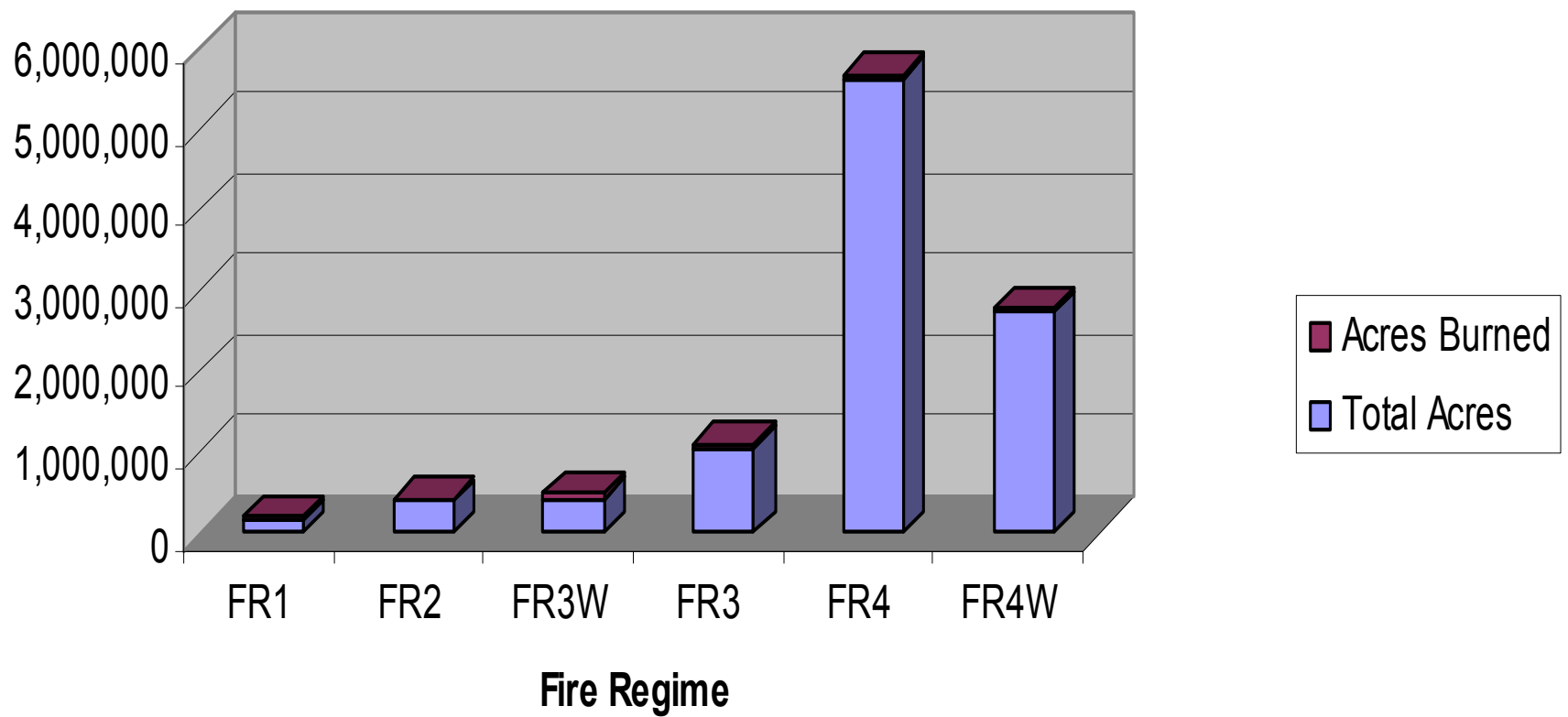


July 4, 1999



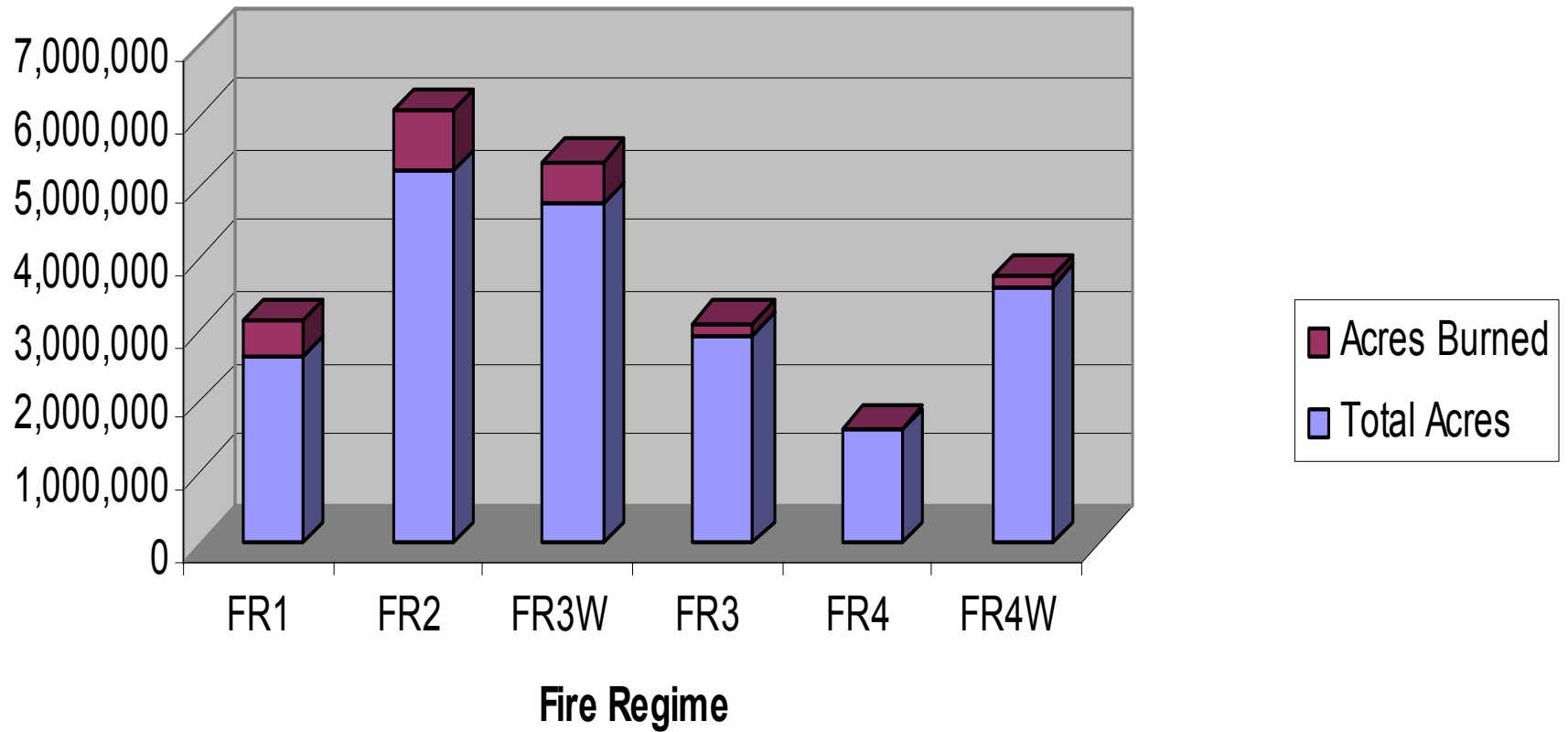
# Upper Michigan

Upper Michigan

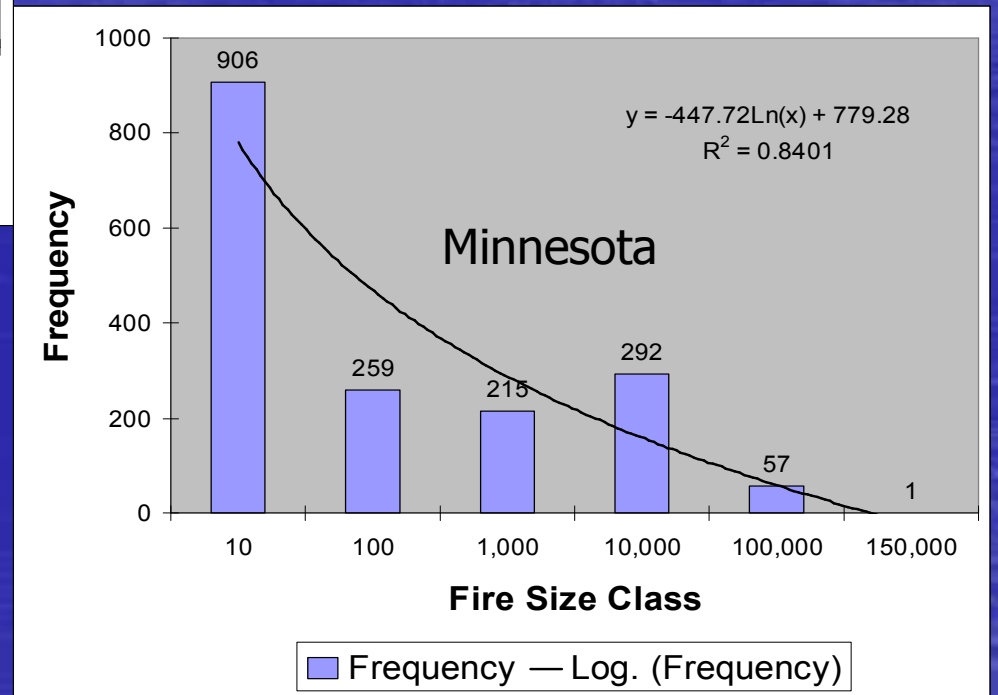
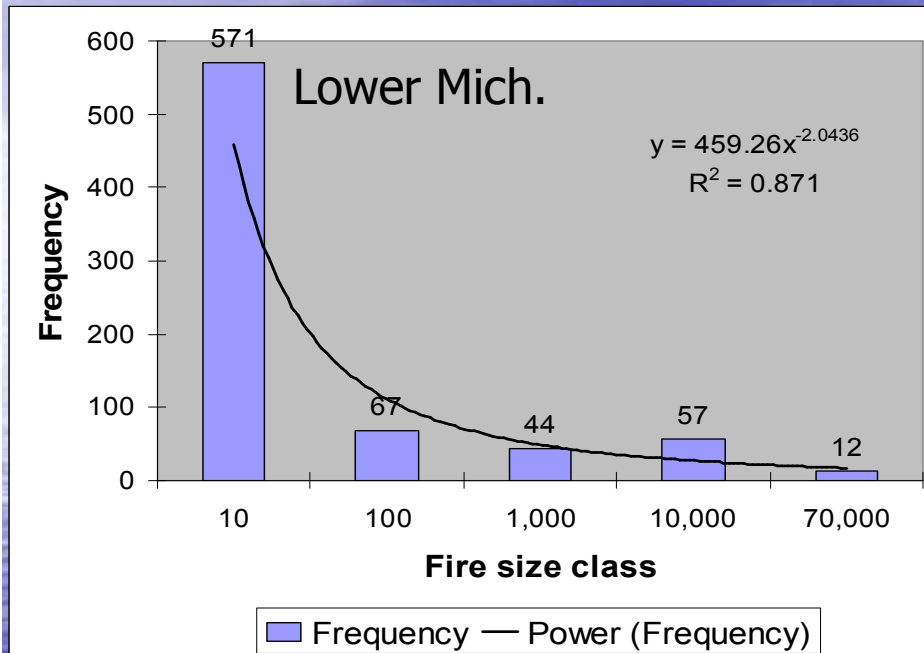


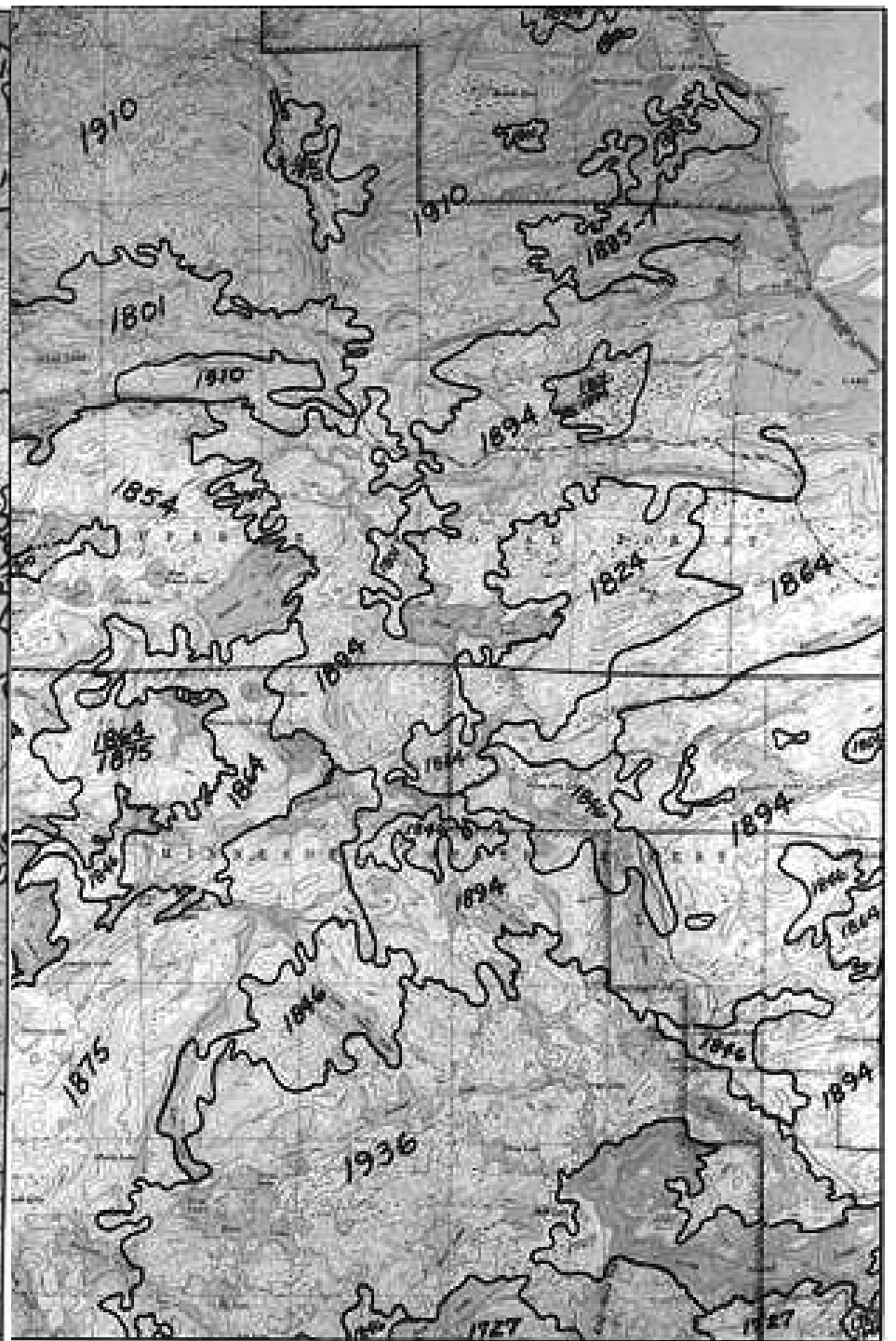
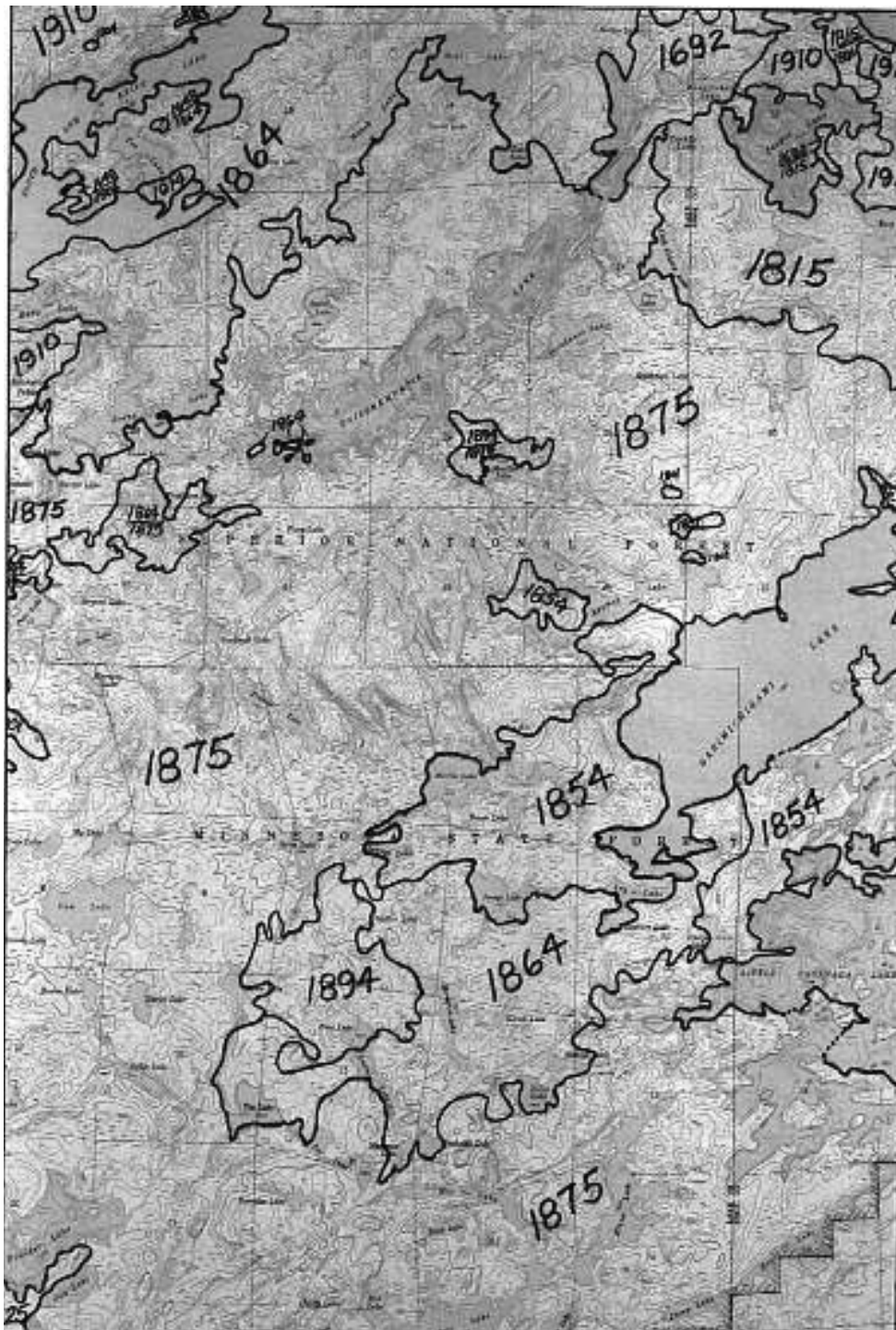
# Minnesota

## Minnesota



# Size and Frequency









## **Significant Fire History (over 100 square miles)**

**Year**                      **Area Impacted (Heinselman 1996)**

**2005-7**                      **179 Square Miles**

---

**1894**                        **265 Square Miles**

**1875**                        **380 Square Miles**

**1864**                        **696 Square Miles**

**1824**                        **131 Square Miles**

**1801**                        **162 Square Miles**

---

**1759**                        **312 Square Miles**

**1727**                        **207 Square Miles**

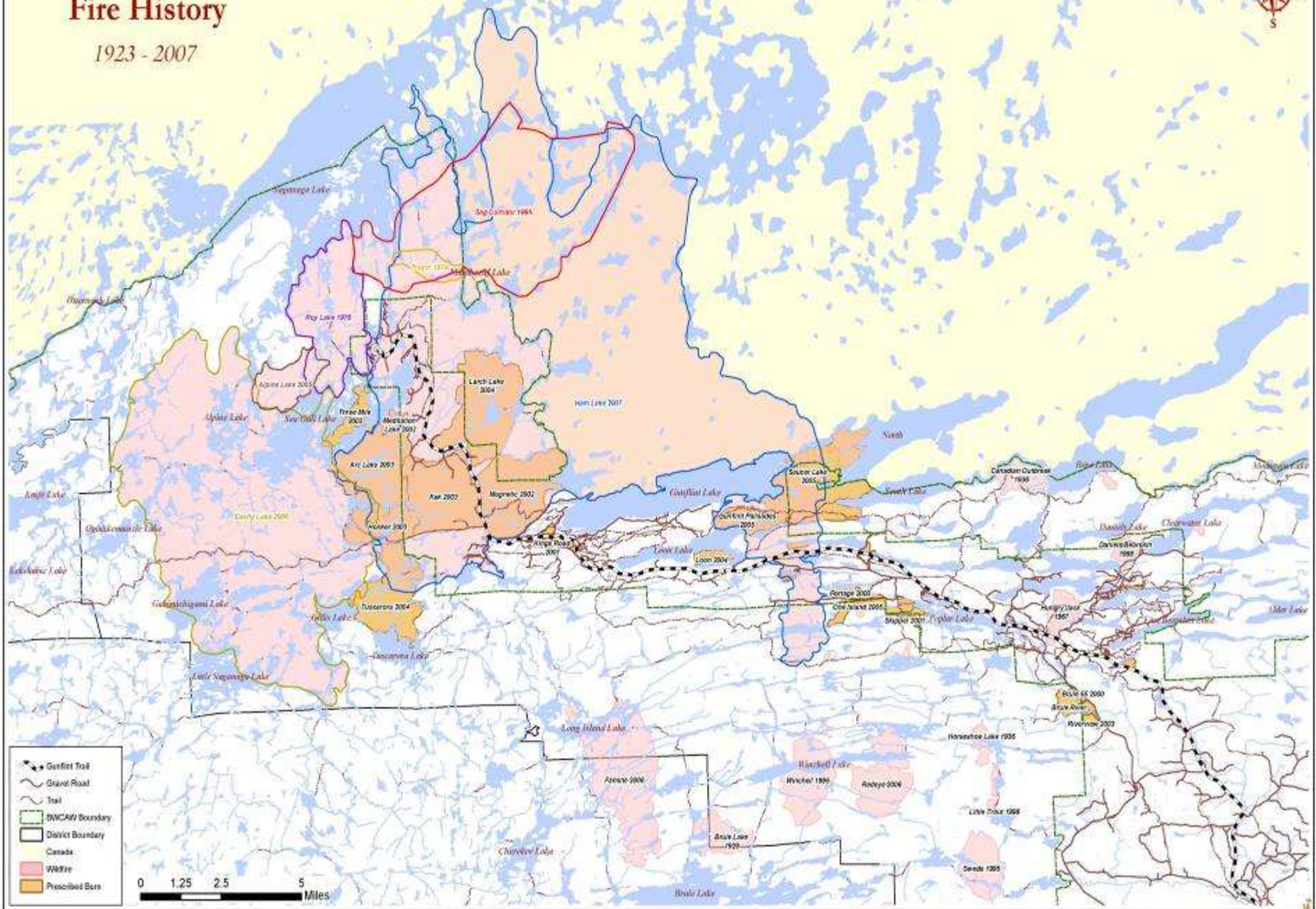
---

**1692**                        **103 Square Miles**

**1681**                        **154 Square Miles**

# Upper Gunflint Trail Fire History

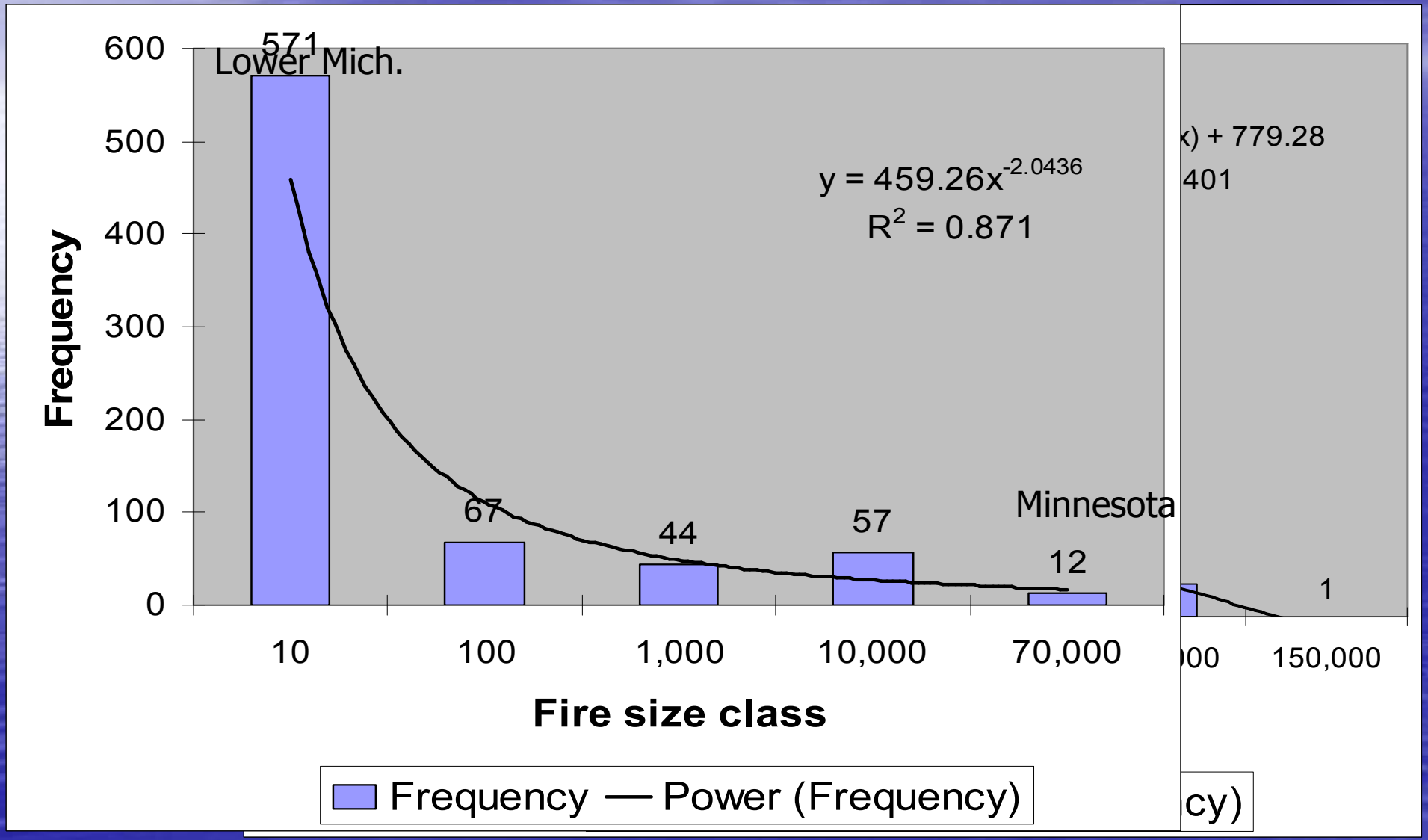
1923 - 2007



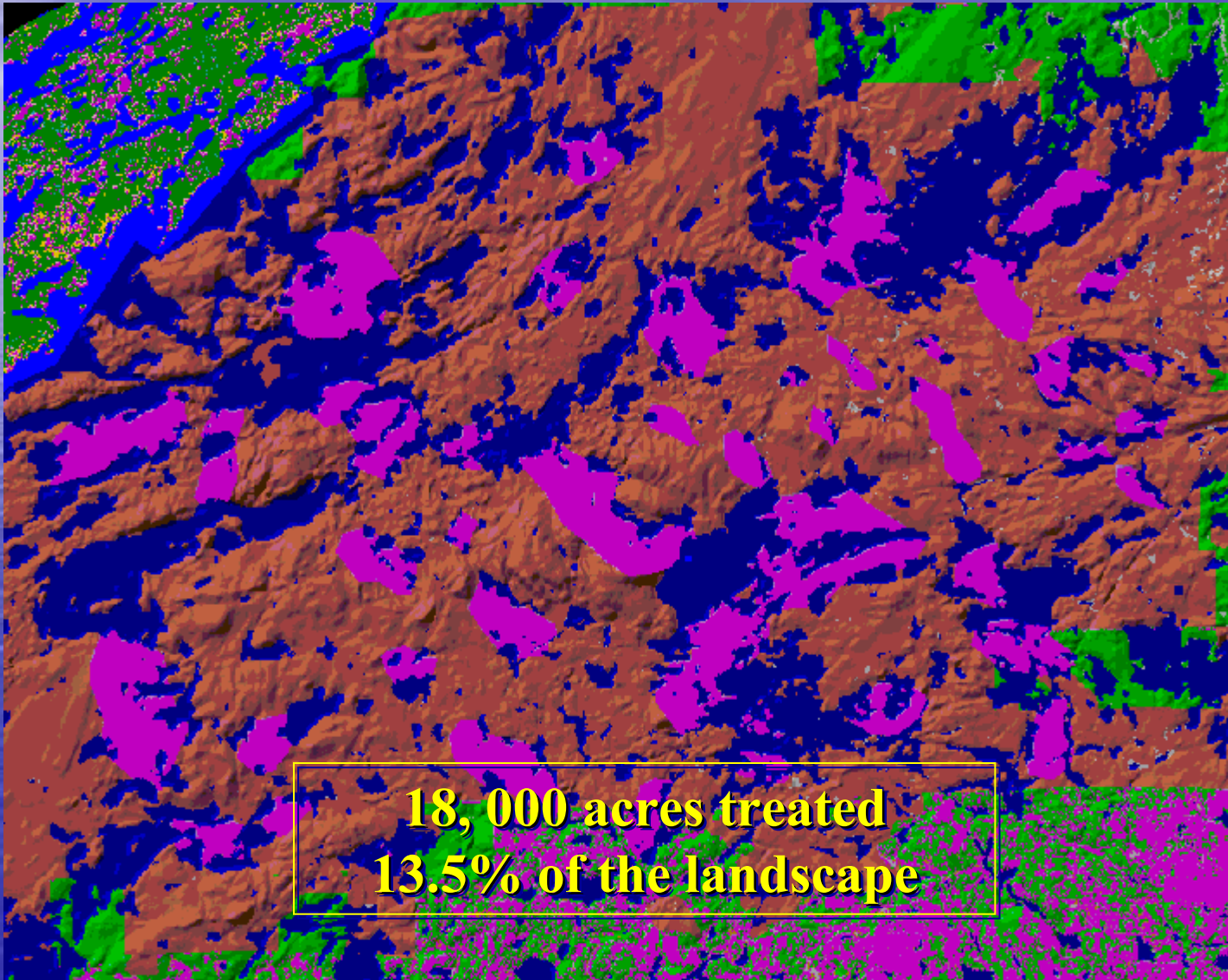
- Gunflint Trail
- Grand Road
- Trail
- BWCAM Boundary
- District Boundary
- Canada
- Wildfire
- Prescribed Burn

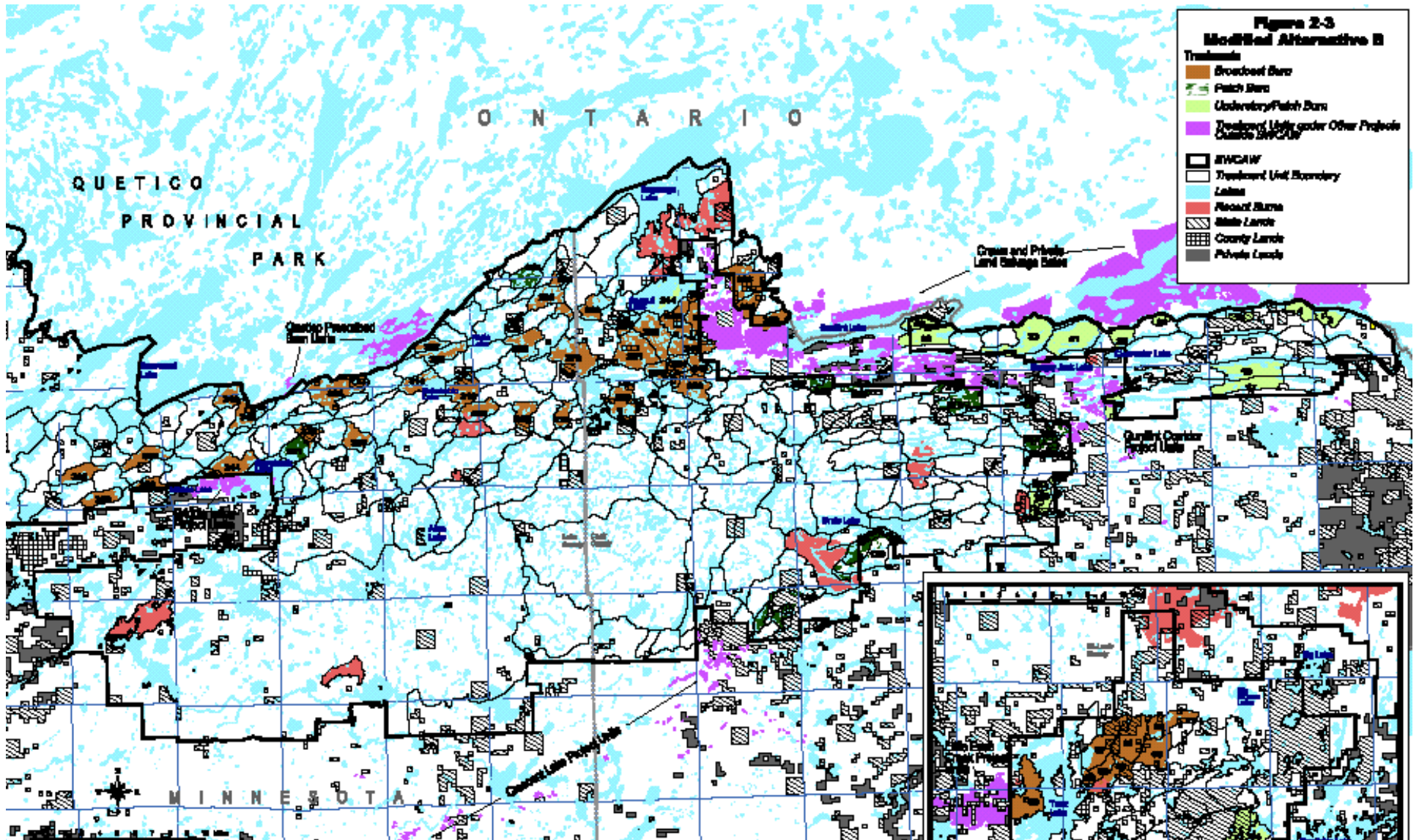
0 1.25 2.5 5 Miles

# Size and Frequency



# Theory, Overlapping Treatment Pattern





**Approved Plan**

# Considerations

- Social Values
- Environmental conditions
- Public Values
- Economic Impact
- Environmental Impacts



Thanks!!

And Let's have a great  
symposium!!