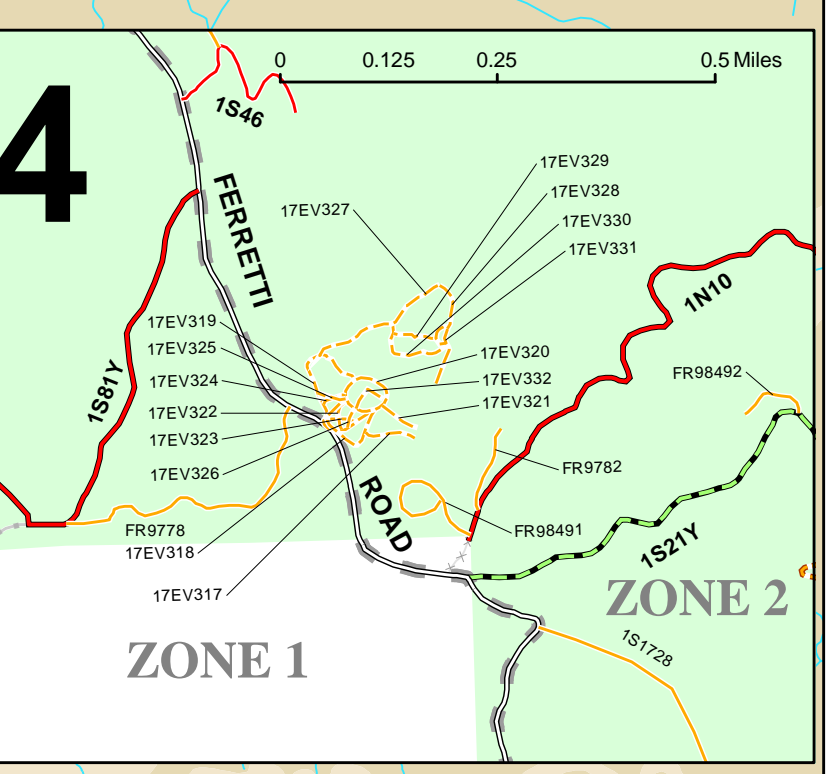
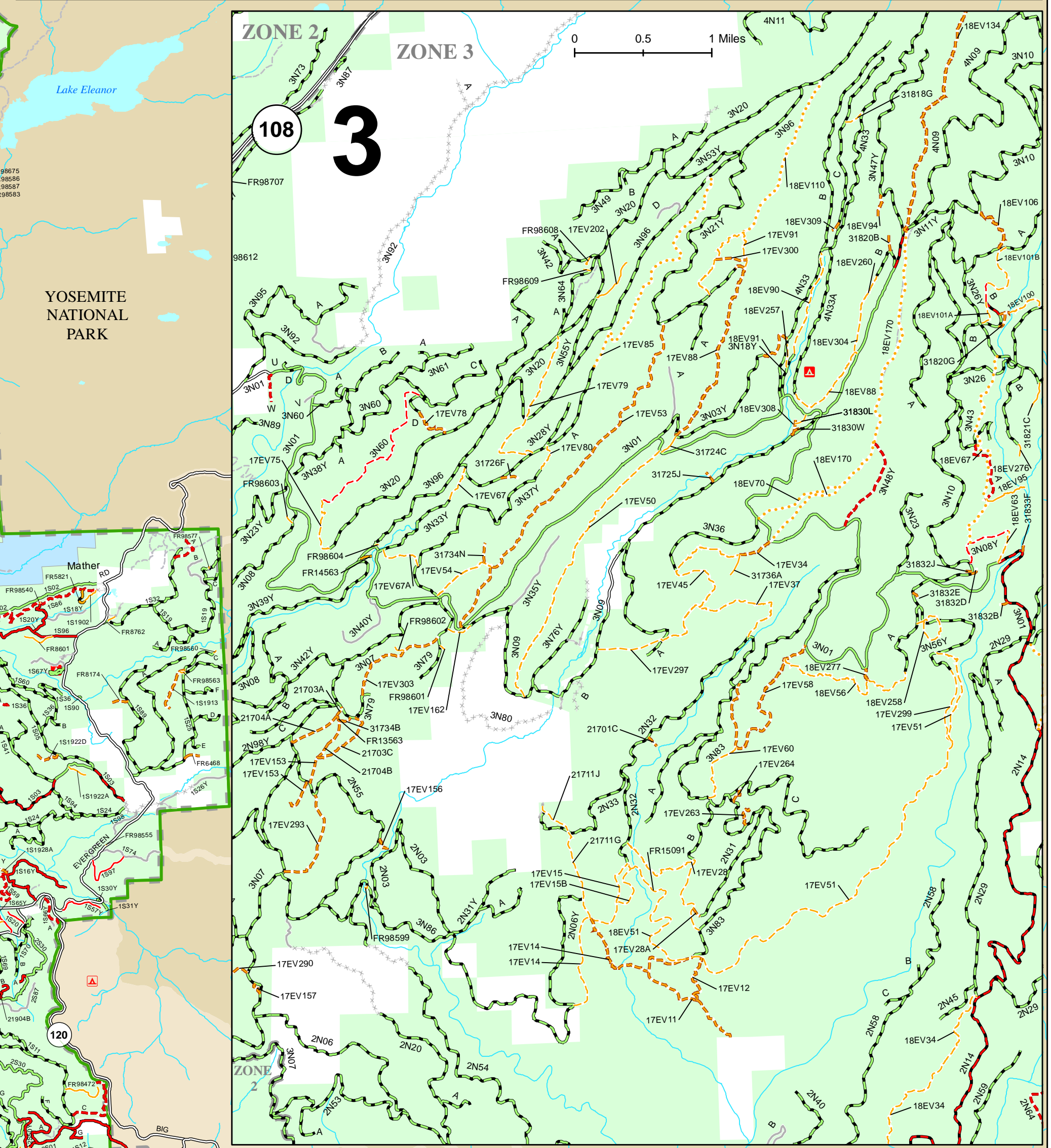
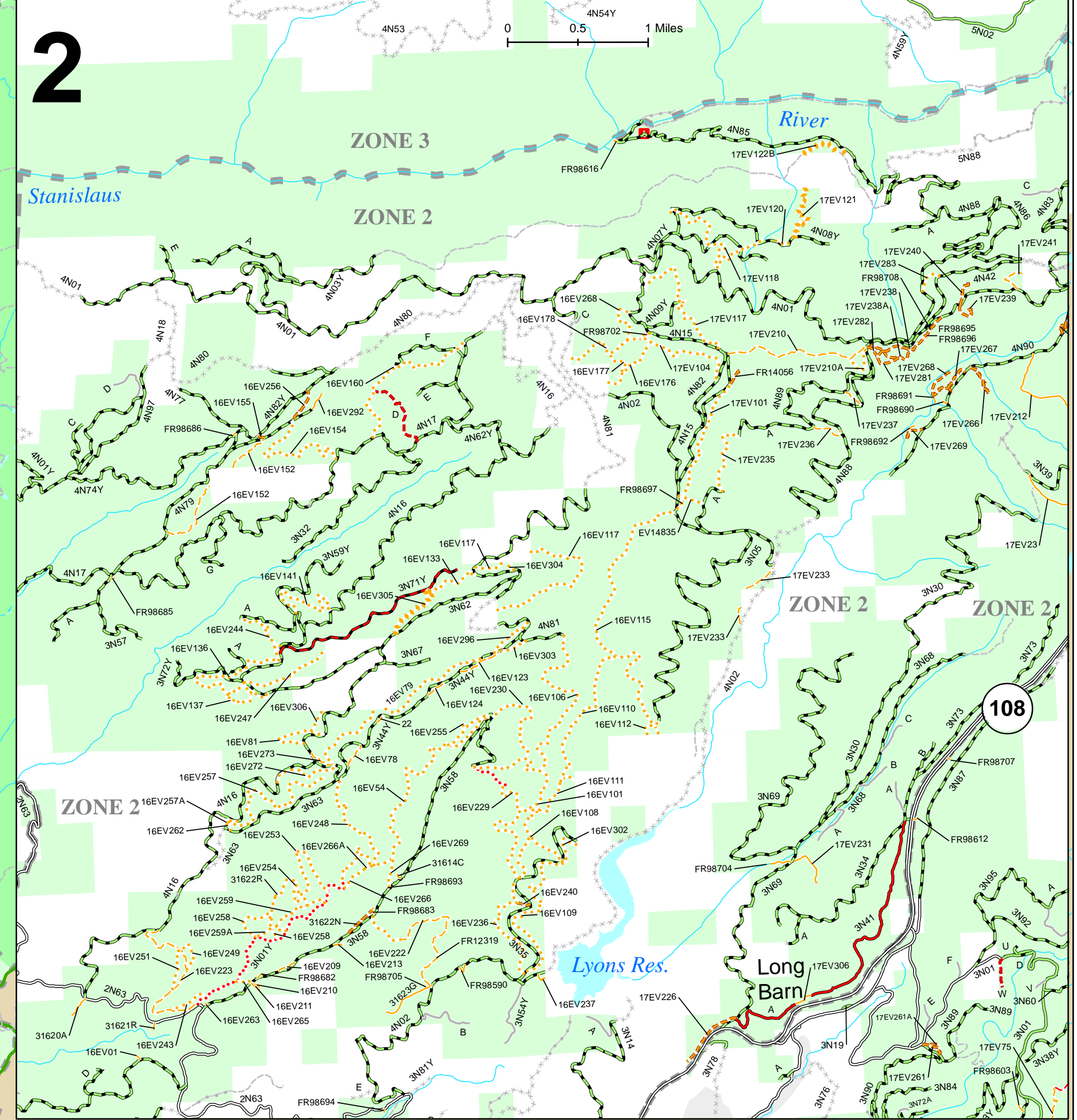
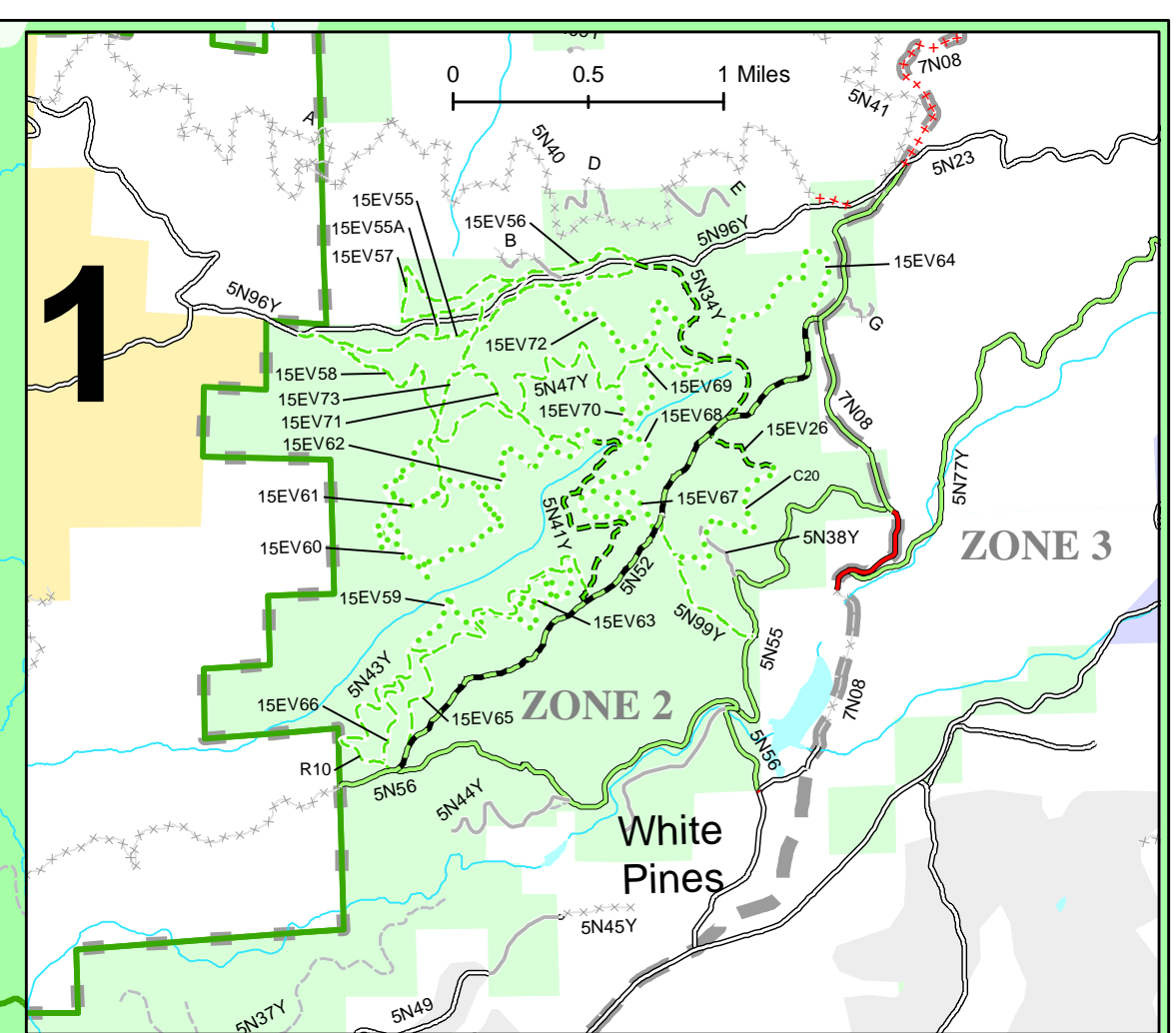
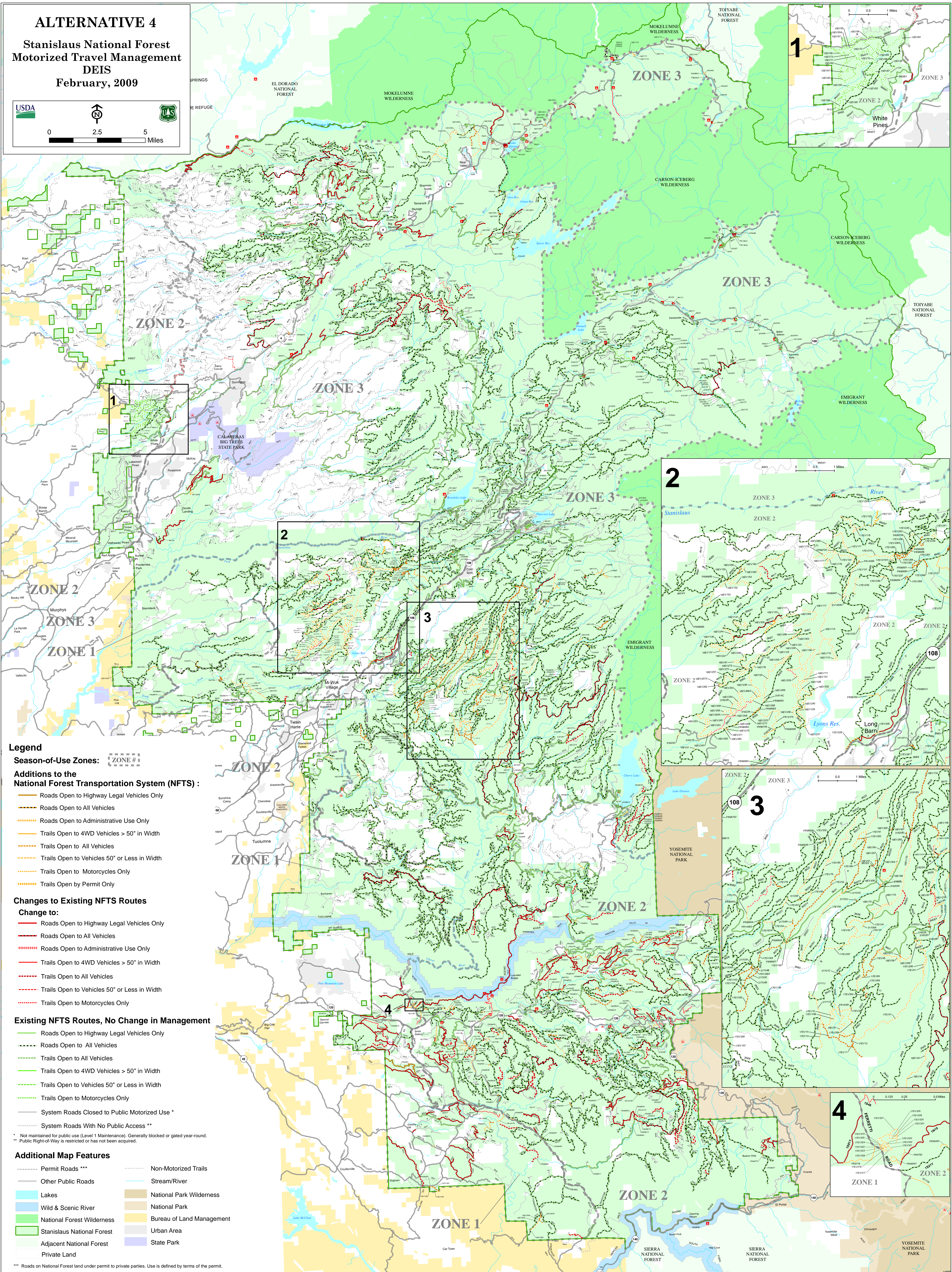
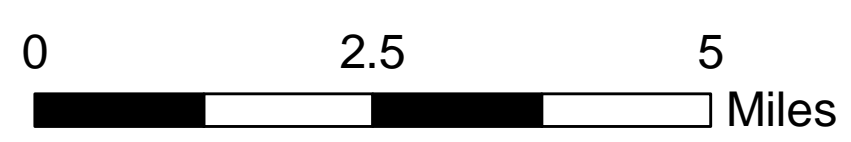


# ALTERNATIVE 4

## Stanislaus National Forest Motorized Travel Management DEIS February, 2009



### Legend

#### Season-of-Use Zones: [ZONE #]

#### Additions to the National Forest Transportation System (NFTS) :

- Roads Open to Highway Legal Vehicles Only
- Roads Open to All Vehicles
- Trails Open to Administrative Use Only
- Trails Open to 4WD Vehicles > 50" in Width
- Trails Open to All Vehicles
- Trails Open to Vehicles 50" or Less in Width
- Trails Open to Motorcycles Only
- Trails Open by Permit Only

#### Changes to Existing NFTS Routes

##### Change to:

- Roads Open to Highway Legal Vehicles Only
- Roads Open to All Vehicles
- Roads Open to Administrative Use Only
- Trails Open to 4WD Vehicles > 50" in Width
- Trails Open to All Vehicles
- Trails Open to Vehicles 50" or Less in Width
- Trails Open to Motorcycles Only

#### Existing NFTS Routes, No Change in Management

- Roads Open to Highway Legal Vehicles Only
- Roads Open to All Vehicles
- Trails Open to All Vehicles
- Trails Open to 4WD Vehicles > 50" in Width
- Trails Open to Vehicles 50" or Less in Width
- Trails Open to Motorcycles Only
- System Roads Closed to Public Motorized Use \*
- System Roads With No Public Access \*\*

\* Not maintained for public use (Level 1 Maintenance). Generally blocked or gated year-round.  
 \*\* Public Right-of-Way is restricted or has not been acquired.

#### Additional Map Features

- Permit Roads \*\*\*
- Other Public Roads
- Lakes
- Wild & Scenic River
- National Forest Wilderness
- Stanislaus National Forest
- Adjacent National Forest
- Private Land
- Non-Motorized Trails
- Stream/River
- National Park Wilderness
- National Park
- Bureau of Land Management
- Urban Area
- State Park

\*\*\* Roads on National Forest land under permit to private parties. Use is defined by terms of the permit.