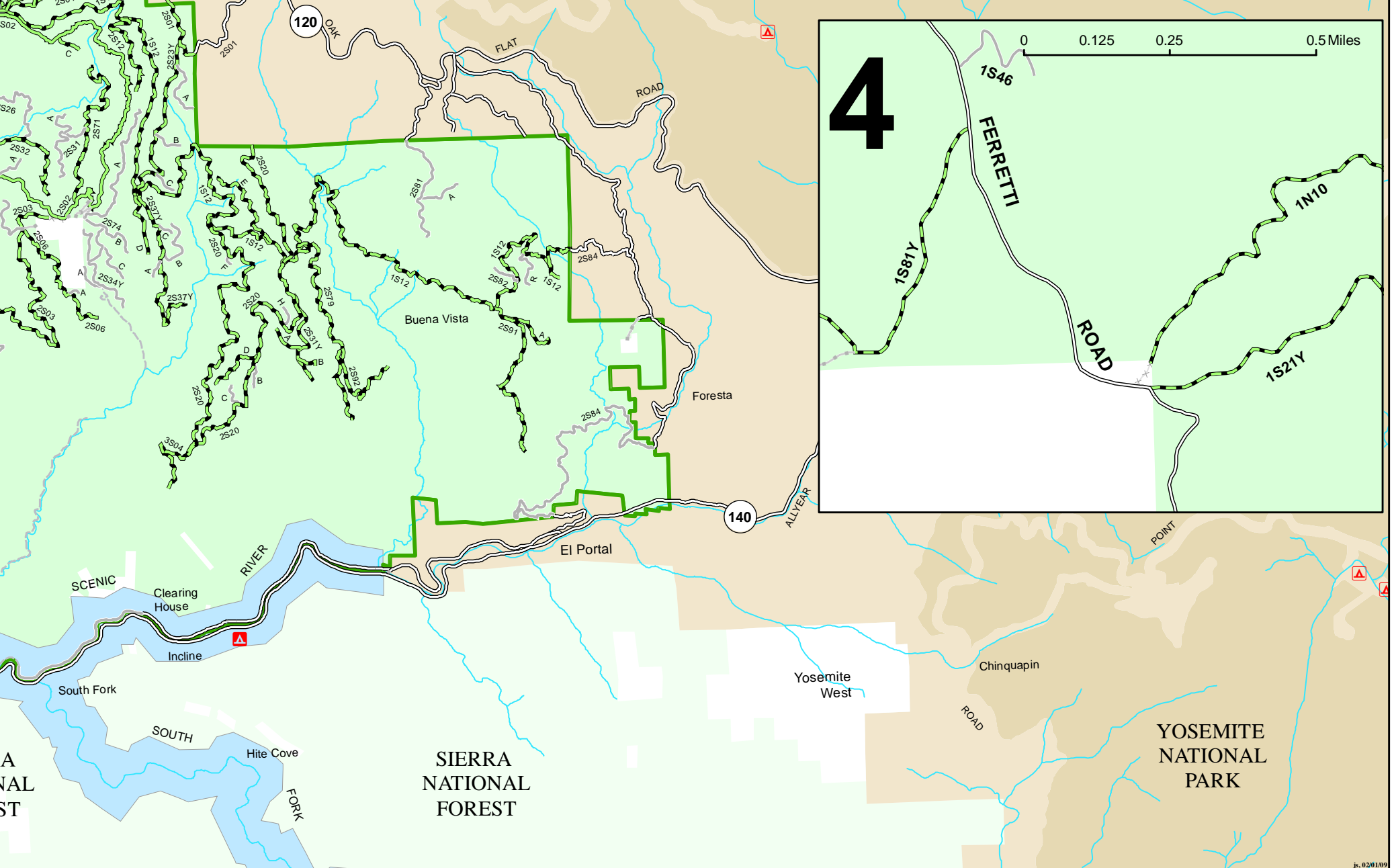
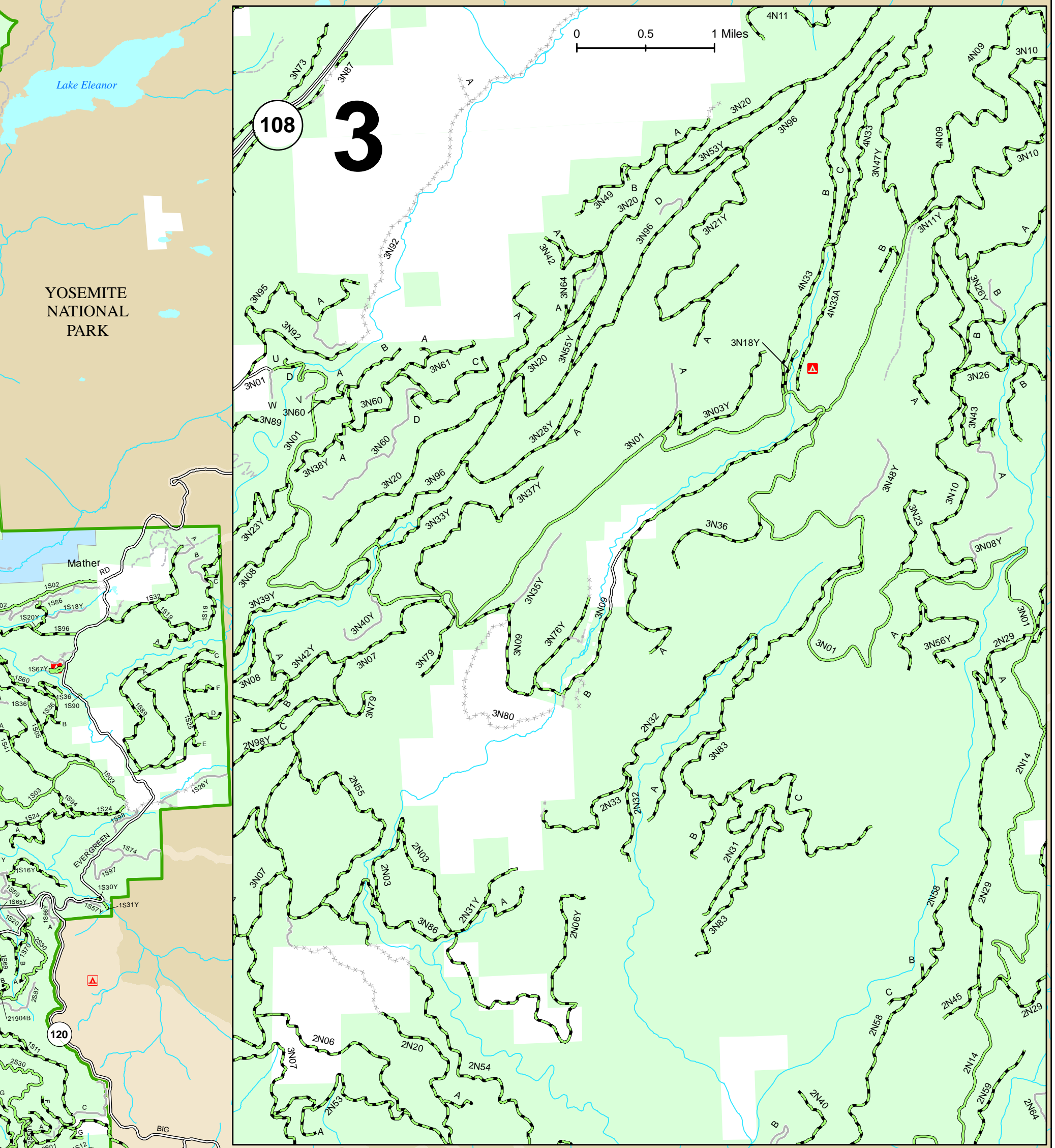
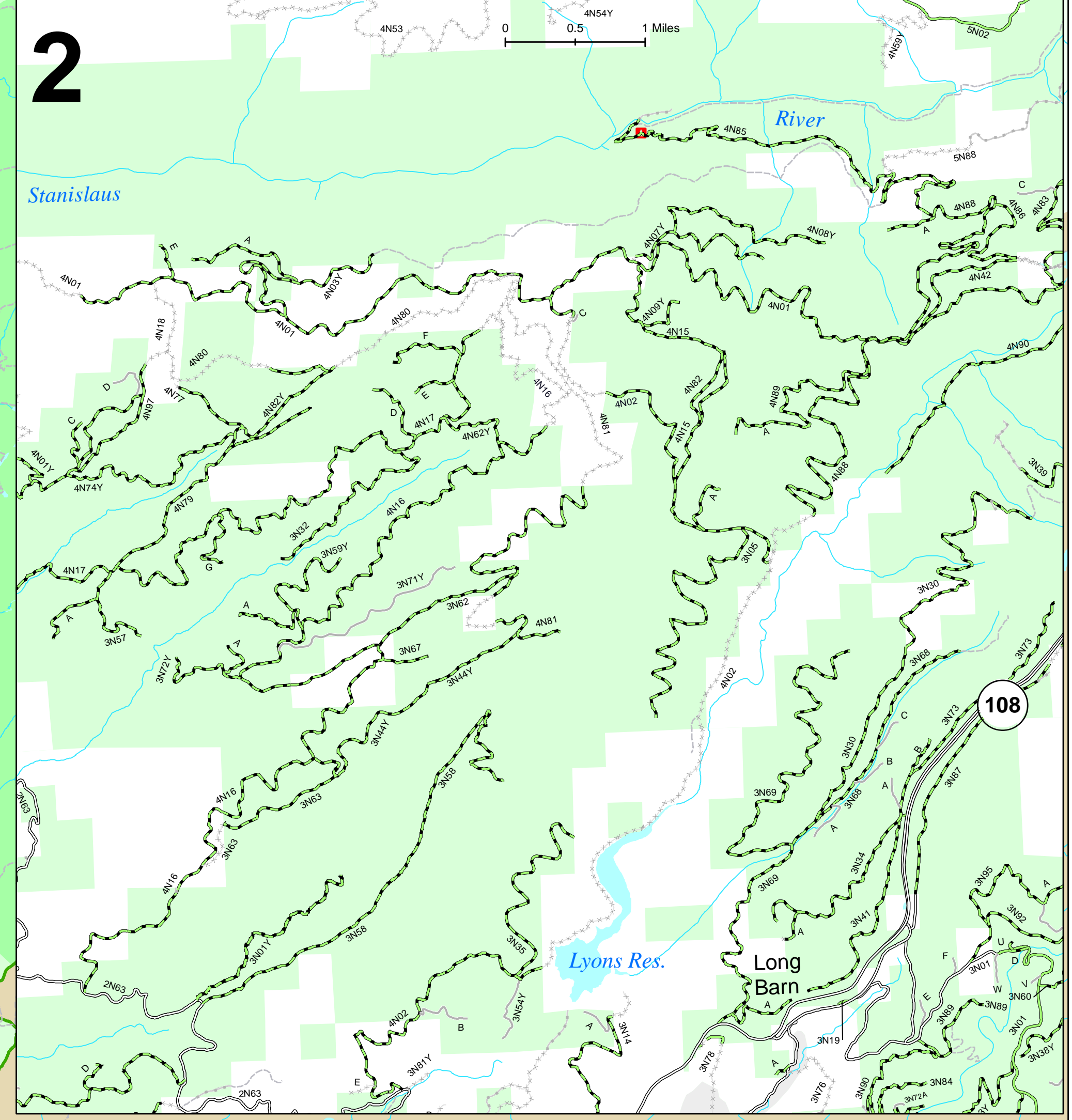
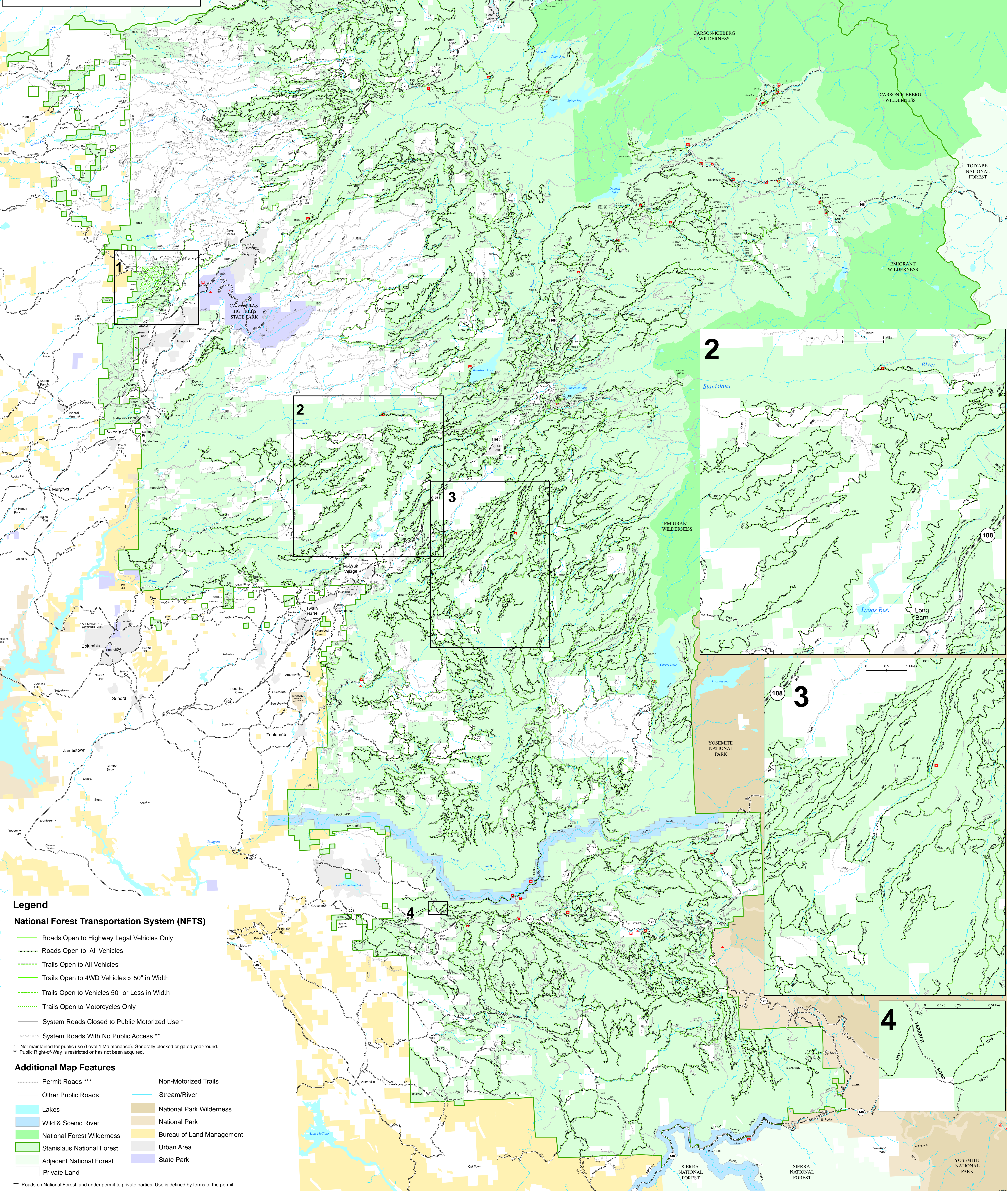
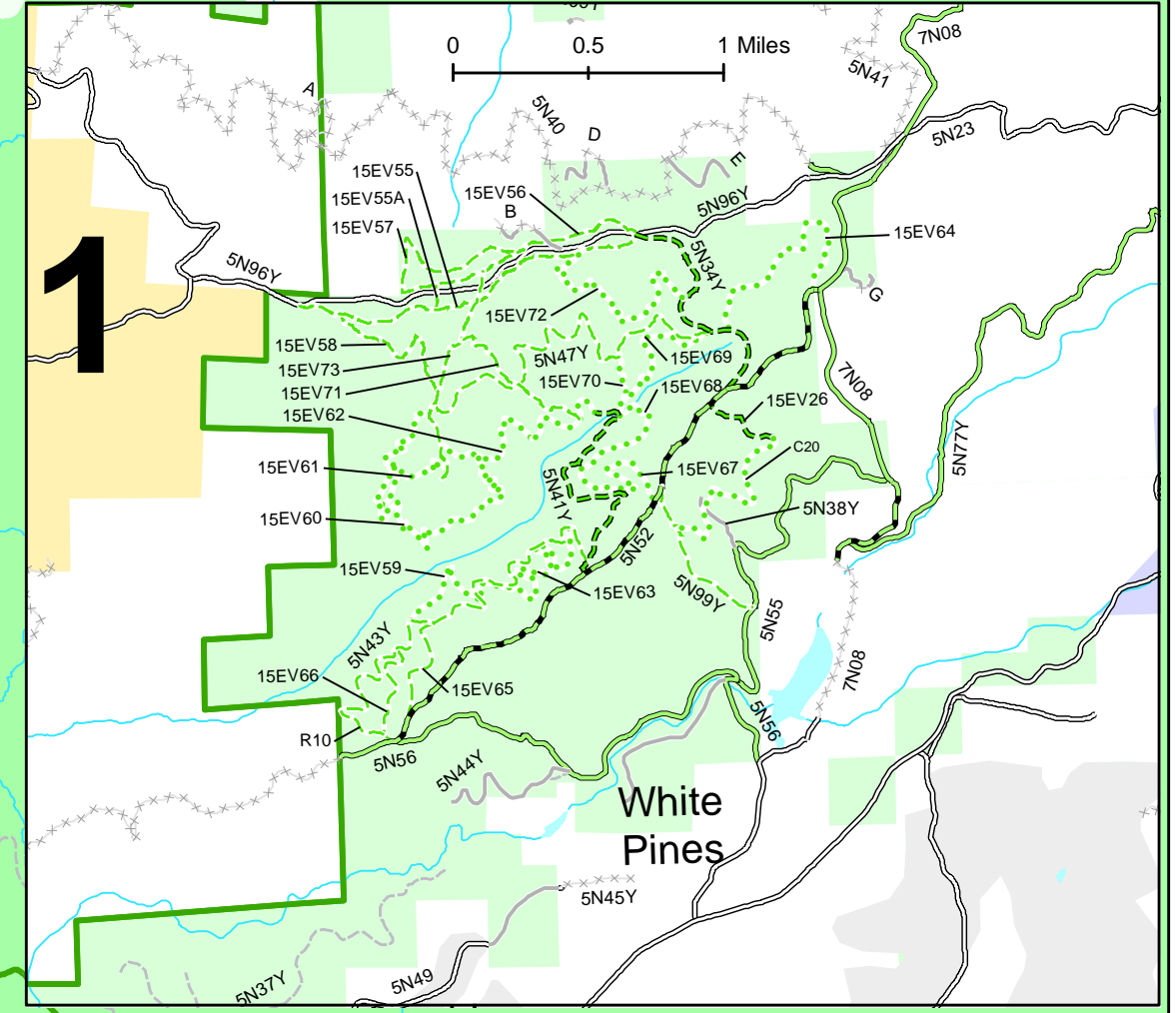


ALTERNATIVE 2

Stanislaus National Forest Motorized Travel Management DEIS February, 2009



0 2.5 5 Miles



Legend

National Forest Transportation System (NFTS)

- Roads Open to Highway Legal Vehicles Only
- - - Roads Open to All Vehicles
- ⋯ Trails Open to All Vehicles
- Trails Open to 4WD Vehicles > 50" in Width
- ⋯ Trails Open to Vehicles 50" or Less in Width
- ⋯ Trails Open to Motorcycles Only
- System Roads Closed to Public Motorized Use *
- ⋯ System Roads With No Public Access **

Additional Map Features

- ⋯ Permit Roads ***
- Other Public Roads
- Non-Motorized Trails
- Stream/River
- Lakes
- Wild & Scenic River
- National Forest Wilderness
- Stanislaus National Forest
- Adjacent National Forest
- Private Land
- National Park Wilderness
- National Park
- Bureau of Land Management
- Urban Area
- State Park

*** Roads on National Forest land under permit to private parties. Use is defined by terms of the permit.