



U.S. Department  
of Transportation  
**Federal Aviation  
Administration**

# **ADMINISTRATOR'S FACT BOOK**

**July 2008**

Produced by:  
Assistant Administrator for Financial Services

Website:  
[http://www.faa.gov/about/office\\_org/headquarters\\_offices/aba/  
admin\\_factbook/](http://www.faa.gov/about/office_org/headquarters_offices/aba/admin_factbook/)

## **FAA MISSION**

*To provide the safest, most efficient  
aerospace system in the world.*

## **FAA VISION**

*Improve the safety and efficiency of  
aviation, while being responsive to our  
customers and accountable to the  
public.*

## Table of Contents

**FAA Vision and Mission ..... Inside Front Cover**

**FAA Values ..... Inside Back Cover**

### **Safety**

Aviation Accidents by Type of Operation.....	3*
Aviation Accident Rates by Type of Operation.....	4*
Airspace Incidents by Incident Type.....	5*
Airspace Incident Rates by Incident Type.....	6*
NTSB U.S. Transportation Fatalities.....	7

### **FAA Air Traffic**

FAA Air Traffic Activity.....	8*
Air Route Traffic Control Center Activity.....	9*
50 Busiest FAA Air Traffic Control Towers.....	10*
50 Busiest Radar Approach Control Facilities.....	12*
Automated Flight Service Stations Activity.....	14*

### **Airports**

Number of U.S. Airports.....	16*
National Airspace Total System Delays.....	17*

### **Aircraft**

U.S. Air Carrier Activity.....	18*
U.S. General Aviation and Air Taxi Activity.....	19
Aircraft Certification Service.....	20*

### **Industry Trends**

Scheduled U.S. Air Carrier Traffic & Fin. Trends.....	21*
Aviation Forecasts.....	22*

### **Commercial Space Transportation**

AST Licensed Activity.....	23*
U.S. Commercial Space Launch Schedule.....	24*

### **Airmen**

Active Pilots and Nonpilots.....	25*
FAA Organizational Chart.....	Center Fold

**Table of Contents (cont.)**

FAA Regional Boundaries Map .....28

**FAA Resources**

FAA Employment ..... 29  
FAA Percent Minority and Female Employment ..... 30  
FAA Major Work Force Employment ..... 31\*  
Labor Relations ..... 32\*  
FAA Finances ..... 33  
FAA NAS Operational Facilities ..... 34

**Organization**

FAA Officials—Washington Headquarters ..... 35\*  
FAA Officials—Major Field Organizations ..... 38\*  
FAA Officials—International Area Offices ..... 40  
FAA Flight Plan 2008-2012 ..... 41

---

For further information call ABA-1 (202-267-9105)

\*Updated this issue

Distribution: A-WXYZE-3; A-FOF-O(STD)

### Aviation Accidents by Type of Operation

Type of Operation	Year	Jan	Feb	Mar	Apr	May	Jun	Jul	Aug	Sep	Oct	Nov	Dec	Year Total
Large Air Carrier	2006	1	2	2	5	3	5	4	1	4	1	3	2	33
	2007	0	2	2	6	1	4	3	2	0	1	0	5	26
Commuter	2006	0	0	1	0	0	1	0	0	0	0	0	1	3
	2007	1	0	0	0	0	2	0	0	0	0	0	0	3
Air Taxi	2006	10	2	7	4	7	3	7	4	1	3	0	6	54
	2007	5	4	5	6	7	3	4	8	6	3	4	7	62
General Aviation	2006	89	80	102	145	160	163	179	153	123	117	102	104	1,517
	2007	78	84	122	145	147	179	214	168	175	141	103	80	1,636
Rotorcraft*	2006	11	11	9	17	28	14	11	19	12	10	13	7	162
	2007	9	12	21	12	15	14	28	13	18	14	13	11	180

\* Part 135 and US registered general aviation, and US-public use rotorcraft accidents.

Note: Preliminary data and subject to change.  
 As of: 4/03/08

Source: AAI-220  
 (202) 267-3279

Safety

3

**Aviation Accident Rates by Type of Operation**

Type of Operation	2004		2005		2006		2007		% Chg 07-06	
	Number	Rate	Number	Rate	Number	Rate	Number	Rate	Number	Rate
Large Air Carriers.....	30	.15	40	.20	33	.17	26	.14	-21%	-18%
Commuter.....	4	1.32	6	2.00	3	1.00	3	0.99	0%	-1%
Air Taxi.....	66	2.04	65	1.70	53	1.42	62	1.69	17%	19%
General Aviation.....	1,617	6.49	1,670	7.20	1,518	6.33	1,631	6.84	7%	8%

Accident Rates are per 100,000 Flight Hours. Flight hours compiled by FAA.  
 Rotorcraft rates discontinued, currently under review.

Note: 2007 data preliminary.  
 As of: 05/30/08

Source: NTSB  
[www.nts.gov/aviation/stats.htm](http://www.nts.gov/aviation/stats.htm)

### Airspace Incidents by Incident Type

Incident Type	Year	Jan	Feb	Mar	Apr	May	Jun	Jul	Aug	Sep	Oct	Nov	Dec	Year Total
Near Midair Collisions	2006	9	5	8	14	11	4	8	15	13	10	6	3	106
	2007	6	11	13	5	10	9	11	12	12	6	9	6	110
	2008	6	9	11	5	0	0	0	0	0	0	0	0	31
Pilot Deviations	2006	160	199	214	245	241	210	227	241	275	291	234	178	2,715
	2007	209	181	221	253	281	250	245	290	225	293	249	190	2,887
	2008	244	217	257	291	0	0	0	0	0	0	0	0	1,009
Operational Errors	2006	93	120	110	106	114	111	116	126	95	127	112	76	1,306
	2007	83	94	121	133	115	132	104	128	90	113	99	103	1,315
	2008	102	88	144	115	0	0	0	0	0	0	0	0	449
Vehicle Pedestrian Deviations	2006	13	11	27	21	21	23	18	27	21	20	15	20	237
	2007	24	21	21	21	24	30	28	18	22	22	27	18	276
	2008	28	18	19	20	0	0	0	0	0	0	0	0	85
Surface Incidents	2006	61	68	92	80	79	84	93	94	109	91	71	69	991
	2007	68	79	85	98	101	112	112	112	91	92	110	75	1,135
	2008	97	85	90	87	0	0	0	0	0	0	0	0	359
Runway Incursions*	2006	21	25	26	25	29	32	35	33	25	35	27	28	341
	2007	21	27	31	35	33	38	33	36	26	<b>72</b>	<b>89</b>	<b>65</b>	506
	2008	<b>76</b>	<b>67</b>	<b>74</b>	<b>75</b>	0	0	0	0	0	0	0	0	<b>292</b>

Note: Preliminary data and subject to change.

Note: Bolded data will give invalid results based on new RI data compilation.

Source: ATO-A (IT)

(202) 385-4802

\*ATO-S

(202) 385-4788

As of:05/13/08

\*As of: 05/30/08

5

**Airspace Incident Rates by Incident Type**

Incident Type									Percent Change	
	2004		2005		2006		2007		2006 - 2007 (4)	
	Number	Rate	Number	Rate	Number	Rate	Number	Rate	Number	Rate
Operational Errors (1).....	1,214	.77	1,497	.95	1,306	.85	1,315	.92	1%	8%
Pilot Deviations (2).....	2,621	1.59	2,244	1.36	2,715	1.65	2,887	1.75	6%	6%
Surface Incidents (3).....	870	1.38	944	1.51	991	1.62	1,135	1.81	15%	12%

9

(1) Per 100,000 Facility Activities

(2) Per 100,000 Flight Hours

(3) Per 1,000,000 Airport Operations

(4) Calculations use fifteen decimal places for rates (rounded two places for display).

Note: Data preliminary and subject to change.

Source: ATO-A (IT)

(202) 385-4802

As of:05/13/08



National Transportation Safety Board  
 2005-2006 U.S. Transportation Fatalities

	2005	2006 <sup>1</sup>
<b>Highway</b>		
Passenger cars.....	18,512	17,800
Light Trucks and Vans.....	13,037	12,721
Pedestrians.....	4,892	4,784
Motorcycles.....	4,576	4,810
Pedalcycles <sup>2</sup> .....	786	773
Medium and heavy trucks.....	804	805
Buses.....	58	27
All Other <sup>3</sup> .....	845	922
<b>Total.....</b>	<b>43,510</b>	<b>42,642</b>
<b>Grade Crossings<sup>4</sup></b>	<b>358</b>	<b>366</b>
<b>Rail</b>		
Intercity <sup>5</sup>		
Trespassers and nontrespassers..... <sup>6</sup>	559	585
Employees and contractors.....	29	22
Passengers on trains.....	16	2
Light, heavy, and commuter rail. <sup>7</sup>	199	172
<b>Total.....</b>	<b>803</b>	<b>781</b>
<b>Marine</b>		
Recreational Boating.....	697	710
Cargo Transport.....	31	32
Commercial fishing..... <sup>8</sup>	44	47
Commercial Passengers.....	17	16
<b>Total.....</b>	<b>789</b>	<b>805</b>
<b>Aviation</b>		
General Aviation.....	563	698
Airlines.....	22	50
Air Taxi.....	18	16
Commuter.....	0	2
Foreign/Unregistered..... <sup>9</sup>	14	13
<b>Total.....</b>	<b>617</b>	<b>779</b>
<b>Pipeline</b>		
Gas.....	14	19
Liquids.....	2	0
<b>Total.....</b>	<b>16</b>	<b>19</b>
<b>GRAND TOTAL.....</b>	<b>45,735</b>	<b>45,026</b>

<sup>1</sup> Numbers for 2006 are preliminary estimates. Aviation data from NTSB; marine data from Department of Homeland Security; all other data from DOT. <sup>2</sup> Includes bicycles or other cycles. <sup>3</sup> Includes vehicle occupant fatalities in other vehicle types, ex. farm or construction equipment. <sup>4</sup> Grade crossing fatalities are not counted as a separate category for determining the grand totals because they are included in the highway and rail categories, as appropriate. <sup>5</sup> Data reported to Federal Rail Administration (FRA). <sup>6</sup> Includes persons on railroad property with and without permission. Does not include motor vehicle occupants killed at grade crossings. <sup>7</sup> Data reported to the FTA. Fatalities for commuter rail operations may also be reported to the FRA and may be included in the intercity railroad fatalities. <sup>8</sup> Refers to only operational fatalities. <sup>9</sup> Includes non-U.S. registered aircraft involved in accidents in the U.S.

## Air Traffic

### FAA Air Traffic Activity (In Thousands)

Aircraft Handled by	Jan-Mar 2008*	Jan-Mar 2007	Jan-Dec 2007
<b>FAA ARTCC's</b>			
Air Carrier.....	4,063	6,141	24,891
Air Taxi.....	1,767	2,364	9,826
General Aviation.....	1,279	1,985	8,246
Military.....	641	940	3,785
<b>TOTAL....</b>	<b>7,750</b>	<b>11,430</b>	<b>46,748</b>
<b>Airport Operations</b>			
<b>Logged by FAA Towers</b>			
Air Carrier.....	3,335	3,243	13,445
Air Taxi.....	2,298	2,393	9,897
General Aviation.....	4,217	4,398	19,170
Military.....	358	399	1,555
<b>TOTAL....</b>	<b>10,208</b>	<b>10,433</b>	<b>44,067</b>
<b>Instrument Operations</b>			
<b>Logged by FAA Towers</b>			
Air Carrier.....	3,596	3,492	14,480
Air Taxi.....	2,723	2,838	11,645
General Aviation.....	3,486	3,652	16,487
Military.....	583	618	2,461
<b>TOTAL....</b>	<b>10,388</b>	<b>10,600</b>	<b>45,073</b>
<b>Flight Services</b>			
<b>Logged by: **</b>			
Flight Service Stations.....	118	169	796
Automated Flight Service Stations.....	106	5,213	7,715
<b>TOTAL....</b>	<b>224</b>	<b>5,382</b>	<b>8,511</b>

\*Preliminary  
 As of: 04/10/08  
 \*\*As of: 04/10/08

Source: APO-130  
 (202) 267-3350  
 ATO-A/AJA  
 (202) 385-4734

## Air Route Traffic Control Center Activity

CY 2007 Rank	Center	Aircraft Handled (000's)		
		Jan-Mar 2008*	Jan-Dec 2007	Jan-Dec 2006
1	Atlanta, GA.....	534	3,182	3,135
2	New York, NY.....	514	3,056	2,970
3	Leesburg, VA.....	484	2,932	2,907
4	Chicago, IL.....	438	2,817	2,845
5	Cleveland, OH.....	443	2,799	2,879
6	Indianapolis, IN.....	426	2,683	2,694
7	Jacksonville, FL.....	467	2,600	2,557
8	Miami, FL.....	496	2,526	2,507
9	Los Angeles, CA.....	404	2,368	2,316
10	Memphis, TN.....	369	2,300	2,288
11	Houston, TX.....	382	2,222	2,144
12	Fort Worth, TX.....	351	2,176	2,160
13	Minneapolis, MN.....	322	2,066	2,073
14	Kansas City, KS.....	332	2,048	2,050
15	Nashua, NH (Boston).....	295	1,913	1,856
16	Denver, CO.....	318	1,895	1,865
17	Albuquerque, NM.....	293	1,746	1,730
18	Oakland, CA.....	292	1,730	1,696
19	Salt Lake City, UT.....	247	1,534	1,505
20	Seattle, WA.....	212	1,322	1,301
21	Anchorage, AK.....	89	581	578
22	Guam **.....	43	252	242

\*Preliminary

\*\*Center Radar Approach Control (CERAP)

As of: 05/30/08

Source: APO-130  
 (202) 267-3350

### 50 Busiest FAA Airport Traffic Control Towers

CY 2007 Rank	Tower and State	Airport Operations (000's)		
		Jan-Mar 2008*	Jan-Dec 2007	Jan-Dec 2006
1	Hartsfield-Jackson Atl Intl, GA.....	241	992	976
2	Chicago/O'Hare Int'l., IL.....	213	927	959
3	Dallas/Ft. Worth Int'l., TX.....	160	687	703
4	Los Angeles Int'l, CA.....	163	681	657
5	Denver International, CO.....	155	620	610
6	Las Vegas/McCarran Int'l, NV.....	151	619	619
7	Houston/G Bush Intercont'l, TX.....	147	604	603
8	Phoenix Sky Harbor Int'l, AZ.....	135	539	547
9	Charlotte/Douglas Int'l, NC.....	132	526	511
10	Philadelphia Int'l, PA.....	121	500	516
11	Detroit Metro Wayne Co., MI.....	116	467	482
12	John F. Kennedy Int'l, NY.....	108	457	397
13	Minneapolis-St. Paul Int'l, MN.....	112	454	476
14	Newark International, NJ.....	107	442	449
15	Salt Lake City Int'l, UT.....	103	421	419
16	Washington Dulles Int'l, VA.....	98	419	424
17	Boston/Logan Int'l, MA.....	87	402	416
18	La Guardia, NY.....	96	397	406
19	Long Beach/Daugherty, CA.....	86	396	369
20	Miami International, FL.....	101	386	387
21	San Francisco Int'l, CA.....	93	380	359
22	Phoenix-Deer Valley, AZ.....	91	378	407
23	Memphis International, TN.....	91	377	388
24	Van Nuys, CA.....	98	374	395
25	Orlando International, FL.....	97	368	356

\*Preliminary

Source: APO-130  
(202) 267-3350

As of: 05/30/08

### 50 Busiest FAA Airport Traffic Control Towers

CY 2007 Rank	Tower and State	Airport Operations (000's)		
		Jan-Mar 2008*	Jan-Dec 2007	Jan-Dec 2006
26	Metropolitan Oakland Int'l, CA.....	73	348	336
27	Seattle Tacoma Int'l, WA.....	82	347	340
28	Santa Ana/John Wayne, CA.....	79	342	363
29	Denver/Centennial, CO.....	77	337	320
30	Covington/Cincinnati Int'l, KY.....	75	328	346
31	Mesa/Falcon Field, AZ.....	93	314	249
32	Fort Lauderdale/Hollywood, FL.....	86	308	297
33	Daytona Beach Int'l, FL.....	81	308	282
34	Honolulu International, HI.....	76	307	317
35	Chicago Midway, IL.....	67	305	299
36	Seattle/Boeing Field, WA.....	66	300	300
37	Anchorage International, AK.....	56	300	303
38	Baltimore/Wash. Int'l, MD.....	69	297	308
39	San Diego/Gillespie Field, CA.....	62	296	278
40	Orlando/Sanford, FL.....	57	294	319
41	Tulsa/Riverside, OK.....	71	292	235
42	Washington National, DC.....	68	279	278
43	Portland International, OR.....	62	265	260
44	Miami/Kendall-Tamiami, FL.....	74	263	208
45	Tampa International, FL.....	68	259	257
46	Tucson International, AZ.....	62	258	270
47	Lambert-St. Louis Int'l, MO.....	62	257	282
48	Raleigh-Durham Int'l, NC.....	59	253	245
49	Cleveland Hopkins Int'l, OH.....	57	245	249
50	Dallas Love Field, TX.....	57	244	248

### 50 Busiest Radar Approach Control Facilities

CY 2007 Rank	Facilities/State	Instrument Ops (000s)		
		Jan-Mar 2008*	Jan-Dec 2007	Jan-Dec 2006
1	Southern Calif. TRACON, CA.....	560	2,243	2,142
2	New York TRACON, NY.....	469	2,066	2,091
3	Potomac TRACON, DC.....	381	1,702	1,715
4	Northern Calif. TRACON, CA.....	372	1,624	1,587
5	Atlanta TRACON, GA.....	334	1,433	1,425
6	Chicago TRACON, IL.....	306	1,365	1,417
7	Dallas/Ft Worth, TRACON, TX.....	277	1,185	1,220
8	Houston TRACON, TX.....	237	959	954
9	Miami International, FL.....	261	943	914
10	Denver TRACON, CO.....	202	823	803
11	Orlando International, FL.....	197	747	704
12	Phoenix TRACON, AZ.....	185	716	718
13	Las Vegas TRACON, NV.....	171	702	718
14	Philadelphia International, PA.....	164	694	713
15	Boston TRACON, MA.....	144	693	711
16	Charlotte/Douglas Int'l, NC.....	158	649	632
17	Detroit TRACON, MI.....	148	634	660
18	San Juan CERAP, PR.....	173	620	620
19	Minneapolis TRACON, MN.....	137	586	609
20	Honolulu Control Facility, HI.....	137	548	558
21	Tampa International, FL.....	147	540	550
22	Seattle/Tacoma TRACON, WA.....	122	529	521
23	Salt Lake City TRACON, UT.....	123	508	502
24	Covington/Cincinnati Int'l, KY.....	101	458	478
25	Memphis International, TN.....	103	443	458

\* Preliminary

Source: APO-130  
(202) 267-3350

As of: 05/30/08

### 50 Busiest Radar Approach Control Facilities

CY 2007 Rank	Facilities/State	Instrument Ops (000's)		
		Jan-Mar 2008*	Jan-Dec 2007	Jan-Dec 2006
26	Jacksonville Int'l, FL.....	107	413	419
27	St Louis TRACON, MO.....	92	407	442
28	San Antonio Int'l, TX.....	98	385	377
29	Palm Beach International, FL.....	102	350	356
30	Cleveland Hopkins Int'l, OH.....	71	342	353
31	Port Columbus Int'l, OH.....	72	341	380
32	Daytona Beach Int'l, FL.....	90	340	404
33	Portland TRACON, OR.....	77	333	330
34	Pittsburgh International, PA.....	66	331	328
35	Corpus Christi, TX.....	71	328	345
36	Raleigh-Durham Int'l, NC.....	75	326	318
37	Austin, TX.....	80	316	323
38	Kansas City International, MO.....	73	310	288
39	Indianapolis International, IN.....	69	310	328
40	Anchorage TRACON, AK.....	63	307	317
41	Pensacola TRACON, FL.....	69	304	293
42	Nashville International, TN.....	66	300	297
43	Milwaukee/Gen Mitchell Intl, WI.....	68	298	299
44	Tucson TRACON, AZ.....	77	221	298
45	Norfolk International, VA.....	61	274	291
46	Dayton International, OH.....	53	273	326
47	Yankee TRACON, CT.....	56	267	250
48	Louisville Int'l/Standiford, KY.....	53	252	266
49	Albuquerque Int'l, NM.....	60	247	253
50	Fresno Yosemite Int'l, CA.....	53	239	239

## Automated Flight Service Stations Activity

CY 2007 Rank	AFSS/State	Flight Services (000's)	
		Jan-Dec 2007*	Jan-Dec 2006
1	Miami AIFSS, FL**	514	821
2	St Petersburg, FL**	405	975
3	Kenai, AK	372	414
4	Islip/New York, NY***	353	340
5	Bridgeport, CT***	249	449
6	Williamsport, PA***	233	380
7	Seattle, WA**	215	574
8	Princeton, MN**	210	592
9	Albuquerque, NM**	192	512
10	Ashburn, VA**	188	671
11	Prescott Hub, AZ**	188	603
12	San Juan, PR IAFSS***	179	194
13	Raleigh, NC**	173	514
14	Anderson, SC***	157	344
15	Fort Worth Hub, TX**	157	652
16	Columbia, MO**	153	430
17	Cleveland, OH***	151	275
18	Conroe, TX***	151	507
19	Kankakee, IL**	148	556
20	Gainesville, FL***	148	239
21	Fairbanks, AK	147	151
22	Denver, CO**	142	452
23	Macon, GA**	129	473
24	McMinnville, OR***	125	220
25	Juneau, AK	125	125
26	McAlester, OK***	121	341
27	Cedar City, UT***	118	301
28	San Diego, CA**	116	277
29	Bangor, ME***	114	199
30	De Ridder, LA***	108	204

\* Preliminary  
 \*\*Closed Reopen(ed)(ing) (No longer providing data )  
 \*\*\*Closed

Source: ATX-400  
(202) 385-4734

Automated International Flight Service Station--AIFSS  
 As of: 04/10/08



## Automated Flight Service Stations Activity

	Flight Services (000's)	
	Jan-Dec	Jan-Dec
	2007*	2006
31 Louisville, KY***	102	216
32 Wichita, KS***	99	211
33 San Angelo, TX***	95	259
34 Jonesboro, AR***	92	300
35 Lansing, MI**	91	641
36 Green Bay, WI***	90	423
37 Rancho Murieta, CA***	89	200
38 Oakland, CA**	87	344
39 Nashville, TN**	85	509
40 Fort Dodge, IA***	85	175
41 Grand Forks, ND***	81	113
42 Honolulu, HI**	80	238
43 Hawthorne, CA***	79	199
44 St. Louis, MO***	79	189
45 Jackson, TN***	78	132
46 Dayton, OH***	75	242
47 Elkins, WV***	66	130
48 Reno, NV***	63	247
49 Boise, ID***	62	123
50 Huron, SD***	57	153
51 Buffalo, NY***	46	303
52 Burlington, VT***	41	212
53 Great Falls, MT***	37	164
54 Casper, WY***	36	125
55 Altoona, PA***	34	272
56 Terre Haute, IN***	31	285
57 Columbus, NE***	26	93
58 Greenwood, MS***	24	81
59 Riverside, CA***	19	157
60 Anniston, AL***	11	222

## Airports

### Number of U.S. Airports (As of December 31)

	2007	2006	2005
<b>Total Airports</b> .....	20,341	19,983	19,854
Airports.....	13,822		
Heliports.....	5,708		
Seaplane Bases.....	527		
Gliderports.....	35		
Stolports.....	87		
Balloonports.....	15		
Ultralight Flightparks.....	147		
<b>Total Civil Public Use Airports</b> .....	5,221	5,233	5,270
Civil Public Use Part 139.....	565		
Civil Public Use Non-Part 139.....	4,656		
Civil Public use airports abandoned...	18	27	14
Newly Established Public Use.....	9		
<b>Total Civil Private Use Airports</b> .....	14,839	14,757	14,584
Civil Private use airports abandoned..	297	133	115
Newly Established Private Use.....	274		
Military Airports.....	281		

Note: Format change with 2007 data  
 As of: 04/30/08

### National Airspace Total System Delays

Year	Jan	Feb	Mar	Apr	May	Jun	Jul	Aug	Sep	Oct	Nov	Dec	YTD Total
2008*	40,069	46,963	43,869	43,229	44,214								218,344
2007	32,927	30,071	39,558	39,340	44,055	58,824	54,689	52,875	38,896	55,140	46,880	47,931	541,186
2006	29,463	24,705	37,218	35,132	40,669	48,096	47,606	46,547	48,092	51,053	43,482	39,797	491,860
2005	32,121	30,176	34,633	25,887	30,920	48,922	58,471	45,328	32,949	34,221	34,273	29,766	437,667
2004	28,104	32,274	34,001	32,459	50,800	52,121	46,894	43,770	30,412	37,271	35,234	32,446	455,786

Delays of 15 minutes or longer

\* Preliminary information that is subjected to change

As of: 05/31/08

Source: ATT-220  
 (703) 904-4470

## Aircraft

### U.S. Air Carrier Activity

	CY 2007	CY 2006	CY 2005
<b>Type of Carrier</b>			
Domestic, flag, supplemental, and cargo air carriers.....	7,449	7,516	7,668
Commuter Air Carriers and Air Taxis.....			
	11,483	11,554	11,571
<b>Total Number of Aircraft<sup>1</sup>.....</b>	<b>18,932</b>	<b>19,070</b>	<b>19,239</b>
<b>Type of Aircraft</b>			
Jet.....	9,999	9,939	9,880
Turboprop.....	2,817	2,870	2,994
Piston.....	3,410	3,583	3,745
Rotary Wing.....	2,706	2,678	2,620
<b>Air Carrier Traffic Statistics<sup>2</sup></b>			
<b>(Millions)*</b>			
Passenger miles flown.....	841,672	809,728	795,038
Passenger enplanements.....	776	750	747
Ton miles.....	123,345	120,587	118,743
Aircraft miles flown.....	8,386	8,211	8,239
<b>Passenger load factor<sup>3</sup></b>			
Domestic.....	79.8%	79.2%	77.2%
International.....	80.4%	79.5%	79.2%

<sup>1</sup> Source: Vital Information System

<sup>2</sup> Includes domestic and international scheduled and non-scheduled service, domestic, flag, supplemental, cargo air carriers and commuters

<sup>3</sup> Proportion of aircraft seating capacity that is sold. The book that had the international number is currently not available.

As of: 3/15/08

(202) 385-4514

\*BTS (K-25)

(202) 366-8513

**U.S. General Aviation  
and Air Taxi Activity  
(Calendar Years)**

	Estimated Active Aircraft (thousands)		Estimated Hours Flown (Millions)	
	2006	2005	2006	2005
<b>Total</b> .....	221.9	224.4	27.7	27.0
<b>By Type Aircraft</b>				
Piston.....	163.7	167.6	16.5	16.4
Turboprop.....	8.1	7.9	2.2	2.1
Jet.....	10.4	9.8	4.1	3.8
Rotary Wing.....	9.2	8.7	3.4	3.1
Experimental.....	23.0	23.6	1.2	1.3
Light Sport.....	1.3	0.2	0.1	0.0
Other.....	6.3	6.5	0.2	0.3
<b>By Type Flying</b>				
Corporate.....	11.0	10.6	3.1	3.1
Business.....	24.4	25.5	3.2	3.2
Personal.....	149.0	151.4	9.1	9.3
Instructional.....	14.3	13.4	4.3	3.6
Aerial Application.....	3.4	3.5	0.9	1.0
Aerial Observation.....	4.4	4.7	1.2	1.3
Aerial Other.....	0.8	0.8	0.2	0.1
External Load.....	0.2	0.2	0.1	0.1
Other Work.....	0.7	0.7	0.2	0.2
Sightseeing.....	0.9	0.9	0.2	0.2
Air Tours.....	0.4	0.6	0.3	0.4
Air Taxi.....	7.4	6.9	2.7	2.9
Air Medical Services...	1.7	1.4	0.8	0.7

As of:11/30/07

AAI-220  
(202) 267-8659

**Aircraft Certification Service  
 Aircraft Certification Mission and  
 Program Files**

	FY 2007	FY 2006
Type Certificates/Supplemental Type Certificates Issued.....	1,912	1,346
Other Design Approvals Issued.....	2,941	12,894
Production Approvals (Including Amendments) Issued.....	2,499	2,935
Airworthiness Certificates Issued.....	788	946
New Airworthiness Directives (AD) Issued.....	1,036	414
New Designees (Representative of the Administrator) Appointed.....	374	342
Total Active Designees.....	3,969	4,071

As of: 03/15/08

Source: AIR-530  
 202-267-3027

## Industry Trends

### Scheduled U.S. Air Carrier Traffic\* and Financial\*\* Trends (In Billions)

	FY 2007	FY 2006	Numerical Change	Percent Change
<b>TRAFFIC</b>				
<b>ASM'S</b>				
Majors.....	947.18	927.30	19.88	2.1
Nationals.....	67.29	63.63	3.65	5.7
Regionals.....	14.26	10.55	3.70	35.1
<b>Totals.....</b>	<b>1028.73</b>	<b>1001.48</b>	<b>27.23</b>	<b>2.7</b>
<b>RPM'S</b>				
Majors.....	760.05	735.79	24.25	3.3
Nationals.....	51.97	48.37	3.60	7.4
Regionals.....	9.80	6.75	3.04	45.1
<b>Totals.....</b>	<b>821.82</b>	<b>790.91</b>	<b>30.89</b>	<b>(3.8)</b>
<b>Load Factor (in percent)</b>				
Majors.....	80.2%	79.3%	0.9	
Nationals.....	77.2%	76.0%	1.2	
Regionals.....	68.7%	64.0%	4.7	
<b>Totals.....</b>	<b>79.9%</b>	<b>79.0%</b>	<b>0.9</b>	
<b>FINANCIAL</b>				
<b>Revenues</b>				
Majors.....	\$155.66	\$148.69	\$6.97	4.7
Nationals.....	\$13.01	\$13.50	-\$0.49	(3.6)
Regionals.....	\$1.16	\$0.85	\$0.31	36.5
<b>Totals.....</b>	<b>\$169.83</b>	<b>\$163.04</b>	<b>\$6.79</b>	<b>4.2</b>
<b>Expenses</b>				
Majors.....	\$146.32	\$143.64	\$2.67	1.9
Nationals.....	\$12.55	\$13.01	-\$0.46	(2.6)
Regionals.....	\$1.24	\$0.83	\$0.41	48.5
<b>Totals.....</b>	<b>\$160.11</b>	<b>\$157.48</b>	<b>\$2.62</b>	<b>1.7</b>
<b>Operating Profit/Loss</b>				
Majors.....	\$9.34	\$5.05	\$4.30	
Nationals.....	\$0.46	\$0.49	(\$0.03)	
Regionals.....	(\$0.08)	\$0.02	(\$0.10)	
<b>Totals.....</b>	<b>\$9.72</b>	<b>\$5.56</b>	<b>\$4.17</b>	

\*Effective FY 2003, DOT mandated small certificated and commuter air carriers (carriers with aircraft size less than 60 seats) report traffic results on DOT Form 41. Financial results for these carriers are report on DOT Form 298C and are excluded from this report.

Source: APO-110

As of: 03/30/08

21

(202) 493-4236

## Aviation Forecasts

Estimated Forecast  
FY 2007    FY 2009

<b>FAA FACILITY WORKLOAD</b>		
<b>Aircraft Handled by FAA ARTCC's (Millions)</b>		
Air Carrier.....	25.0	27.5
Air Taxi/Commuter.....	9.7	10.6
General Aviation.....	8.3	9.1
Military.....	3.8	3.8
Total.....	46.8	51.0
<b>Operations Logged by FAA/Contract Towers (Millions)</b>		
Airport.....	61.1	65.0
Instrument.....	45.4	47.9
<b>CIVIL AVIATION ACTIVITY</b>		
<b>Certificated Route Air Carrier</b>		
Revenue Passenger Enplanements (Millions).....	605.6	677.1
Revenue Passenger Miles (Billions).....	749.4	876.9
Air Carrier Aircraft.....	4,980	5,511
<b>General Aviation Estimated</b>		
Hours Flown (Millions)*.....	27.9	31.3
Active Aircraft (Thousands)*.....	225.0	238.1
<b>ESTIMATED FUEL CONSUMED BY U.S. DOMESTIC</b>		
<b>CIVIL AVIATION (Millions of Gallons)</b>		
<b>Jet Fuel</b>		
Air Carrier.....	19,583	22,778
General Aviation.....	1,650	2,387
<b>Aviation Gas</b>		
Air Carrier.....	2	2
General Aviation.....	348	355
<b>Active Pilots (Thousands)*.....</b>	<b>590,349</b>	<b>591,830</b>

\*Calendar Year

As of: 03/30/08

Source: APO-110  
(202) 493-4236



**U.S. Commercial Space Transportation  
FAA Licensed Activity**

	CY 2008 (Projected)	CY 2007	CY 2006
<b>Licensed Commercial Launches</b>			
TOTAL	13	4	7
Number of Orbital Launches	13	4	7
Number of Suborbital Launches	0	0	0
<b>By Launch Vehicle Type</b>			
Delta II, IV (Boeing Company)	3	3	1
Atlas V (Lockheed Martin)	1	0	1
Zenit 3SL (Sea Launch)	6	1	5
Falcon 1 (SpaceX)	2	0	0
Pegasus XL (Orbital Sciences)	1	0	0
<b>By Launch Site (Federal)</b>			
Cape Canaveral AF Station, FL	2	0	2
Vandenberg AFB, CA	2	3	0
Kwajalein / Marshall Islands	3	0	0
<b>By Launch Site (Commercial)</b>			
Pacific Ocean	6	1	5
Other Commercial	0	0	0
<b>Experimental Permit Launches</b>			
TOTAL (not part of license total)	5 to 10	9	6

As of: 6/13/08

Source: AST  
(202) 267-7989

United States Commercial Space Launch Schedule, CY 2008 (Launch dates are subject to change)		
Payload (Operator/ Payload Type)	Launch Company/ Vehicle	Launch Date/ Launch Site (Status)
Thurgate 03 (United Arab Emirates)	Sea Launch Zenit 3SL	January 15, 2008 Pacific Ocean Platform (Successful)
Direct TV 11 (U.S.) Communications	Sea Launch Zenit 3SL	March 19, 2008 Pacific Ocean Platform (Successful)
ICO G1 (U.S.) Communications	Lockheed Martin (Lockheed Martin Commercial Launch Services) Atlas V	April 14, 2008 Cape Canaveral Air Force Station, FL (Successful)
CMCFS (U.S.) Communications	Orbital Sciences Pegasus XL	April 16, 2008 Reagan Test Site, Marshall Islands (Successful)
Galaxy 18 (U.S.) Communications	Sea Launch Zenit 3SL	May 21, 2008 Pacific Ocean Platform (Successful)
Trailblazer (U.S.) Demonstration	SpaceX Falcon 1	June 2008 Kwajalein, Marshall Islands
EchoStar X2 (U.S.) Communications	Sea Launch Zenit 3SL	July 2008 Pacific Ocean Platform
GeoEye 1 (U.S.) Remote Sensing	The Boeing Company (Boeing Launch Services) Delta II	August 2008 Vandenberg Air Force Base, CA
RazakSAT (Malaysia) Remote Sensing	SpaceX Falcon 1	3 <sup>rd</sup> Quarter 2008 Kwajalein, Marshall Islands
Unannounced (unannounced) Communications	Sea Launch Zenit 3SL	3 <sup>rd</sup> Quarter 2008 Pacific Ocean Platform
COSMO-SkyMed 3 (Italy) Remote Sensing	The Boeing Company (Boeing Launch Services) Delta II	October 2008 Vandenberg Air Force Base, CA
Unannounced (unannounced) Communications	Sea Launch Zenit 3SL	4 <sup>th</sup> Quarter 2008 Pacific Ocean Platform
GOES-O (U.S.) Remote Sensing	The Boeing Company (United Launch Alliance) Delta IV	4 <sup>th</sup> Quarter 2008 Cape Canaveral Air Force Station, FL

As of 6/13/08

Source: AST

**Active Pilots and Nonpilots  
 (As of 31 December)**

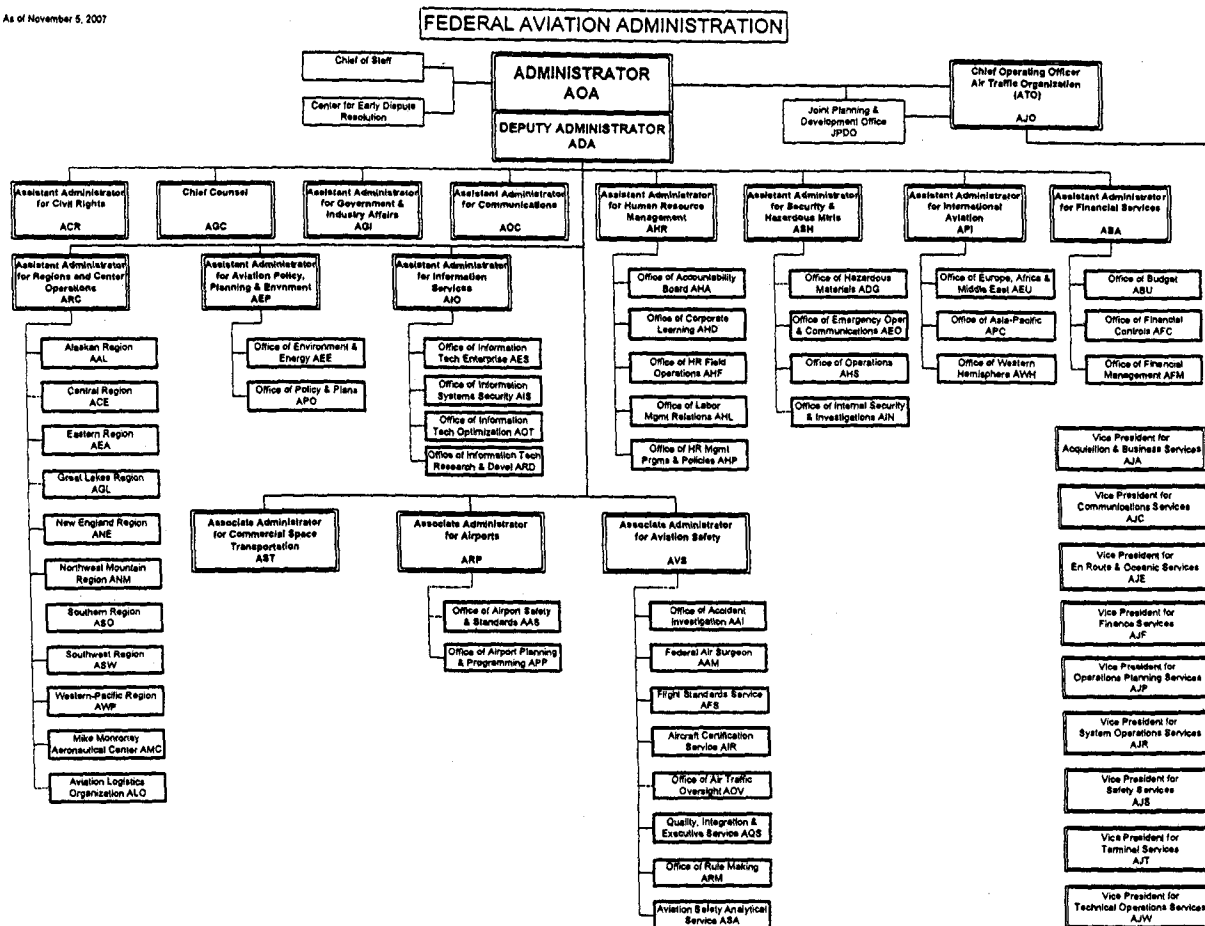
	2007		2006	
	Total	Women	Total	Women
<b>Pilot-Total</b> .....	<b>590,349</b>	<b>35,784</b>	<b>597,109</b>	<b>36,101</b>
Student.....	84,339	9,559	84,866	9,640
Private.....	211,096	13,694	219,233	14,111
Commercial.....	115,127	7,101	117,610	7,236
Airline Transport.....	143,953	5,349	141,935	5,071
<b>Nonpilot-Total</b> .....	<b>666,559</b>	<b>138,452</b>	<b>656,227</b>	<b>128,192</b>
Mechanic.....	322,852	6,524	323,097	6,345
Repairmen.....	40,277	2,193	40,329	2,180
Ground Instructor.....	74,544	5,726	74,849	5,669
Flight Engineer.....	54,394	1,901	55,952	1,920
Flight Attendant.....	118,426	100,630	134,874	108,559
<b>Flight Instructor</b> .....	<b>92,175</b>	<b>6,232</b>	<b>91,343</b>	<b>6,158</b>

As of 05/31/08

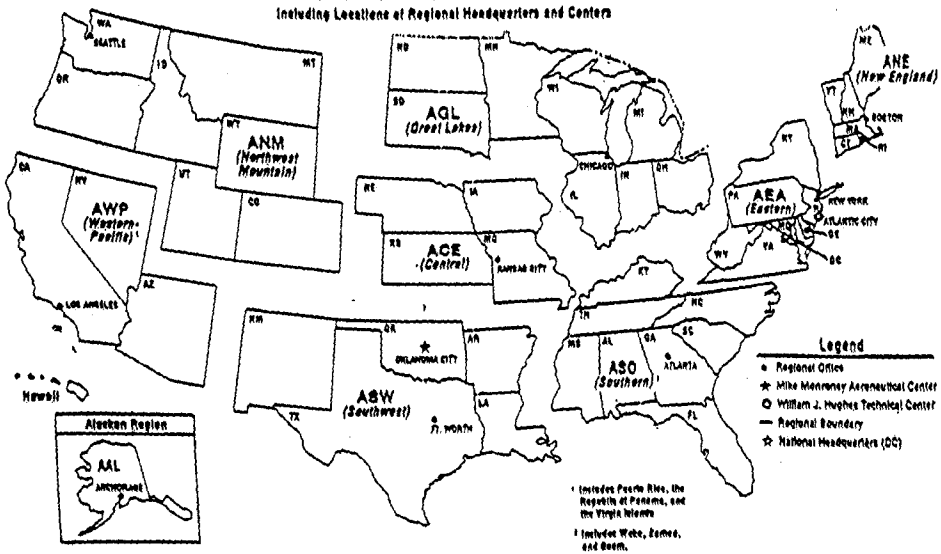
25

Airmen

As of November 5, 2007



U. S. DEPARTMENT OF TRANSPORTATION  
 Federal Aviation Administration  
**FAA REGIONAL BOUNDARIES**  
 Including Locations of Regional Headquarters and Centers



## FAA Resources

---

### FAA Employment (Permanent Employees)<sup>1</sup>

	FY07	FY06
<b>Line of Business</b>		
Air Traffic Organization (ATO).....	33,090	32,734
Aviation Safety (AVS).....	6,842	6,562
Airports (ARP).....	471	467
Comm. Space Transportation (AST)....	56	54
Staff Offices**.....	3,964	3,889
<b>Total</b>	<b>44,423</b>	<b>43,706</b>
<b>Region/Center/Headquarters (included in above total)</b>		
Aeronautical Center.....	3,224	3,196
Alaskan.....	1,145	1,167
Central.....	2,162	1,970
Eastern.....	4,612	4,544
Great Lakes.....	5,569	5,498
New England.....	1,451	1,435
Northwest Mountain.....	3,914	3,814
Southern.....	6,600	6,715
Southwest.....	4,756	4,695
Western-Pacific.....	4,580	4,581
Washington Headquarters (only) <sup>2</sup> .....	5,363	3,096
Technical Center.....	1,047	1,001

<sup>1</sup> Full time permanent and part time permanent employees only.

<sup>2</sup> Washington Headquarters employees physically located in Orville/Wilbur Wright Buildings and surrounding areas.

\*\* Staff Offices include: ABA; ACR; ADA;AEP; AGC; AGI; AHR; AIO; AOA; AOC; APO; ARC; ASH.

Disclaimer: This is a statistical snapshot of the workforce demographics. The use of this data in any employment decision is PROHIBITED without the express written authorization of the Deputy Chief Counsel for Operations, AGC-3.

As of: 09/30/07

Source: AHP-100  
 (202) 267-8257

30

### FAA Percent Minority & Female Employment<sup>1</sup>

Lines of Business/Region/Center/Headquarters	% Minority		%Female	
	FY07	FY06	FY07	FY06
Air Traffic Organization (ATO) .....	20.0	19.0	20.0	20.0
Aviation Safety (AVS).....	19.0	19.0	27.0	28.0
Airports (ARP).....	29.0	29.0	40.0	39.0
Commercial Space Transportation (AST).....	41.0	43.0	34.0	35.0
Staff Offices.....	32.0	32.0	53.0	54.0
<b>Total</b>	<b>21.0</b>	<b>21.0</b>	<b>24.0</b>	<b>24.0</b>
Aeronautical Center.....	22.0	22.0	39.0	39.0
Alaskan.....	15.0	14.0	20.0	20.0
Central.....	14.0	14.0	23.0	22.0
Eastern.....	16.0	16.0	18.0	18.0
Great Lakes.....	11.0	11.0	20.0	20.0
New England.....	8.0	8.0	21.0	21.0
Northwest Mountain.....	14.0	15.0	24.0	24.0
Southern.....	24.0	23.0	19.0	20.0
Southwest.....	24.0	24.0	21.0	21.0
Western-Pacific.....	31.0	31.0	20.0	20.0
Washington Headquarters <sup>2</sup> .....	31.0	31.0	40.0	40.0
Technical Center.....	21.0	21.0	32.0	32.0

<sup>1</sup> All FAA employees.

<sup>2</sup> Washington Headquarters employees physically located in Orville/Wilbur Wright Buildings and surrounding areas.

As of: 09/30/07

Source: AHP-100  
 (202) 267-8257

**Major Work Force Employment**

	Employment				
	FY08	FY07	FY06	%Chg. FY08 - FY07	Actual Change
<b>Controller Work Force*</b>					
<b>Controllers</b>	15,010	14,874	14,618	0.9%	136
<b>Traffic Management Coordinators</b>	554	565	613	-1.9%	-11
<b>Operations Supervisors</b>	1,836	1,788	1,787	2.7%	48
<b>Flight Service Stations (FSS)</b>	176	181	184	-2.8%	-5
<b>Field Maintenance</b>					
<b>PASS Technical</b>	6,054	6,090	6,201	-0.6%	-36
<b>NATCA Engineers</b>	1,067	909	1,081	17.4%	158
<b>1st Line Supervisors</b>	659	522	529	26.2%	137
<b>Airports Work Force</b>		462	466	-0.9%	-4
<b>Aircraft Certification**</b>		1,179	1,180	-0.1%	-1
<b>Flight Standards Work Force**</b>		4,825	4,867	-0.9%	-42

\* Includes all employees in pay status and Academy trainees.  
 Note: FSS employment reduction due to A-76 effective 10/04/05.

\*\*In FY 07, AVS realigned 29 Aircraft Certification and 144 Flight Standards Information Technology Analysts into the Office of Quality, Integration and Executive Service.

As of: 05/24/08  
 Source: ATO-F, (202) 267-9123  
 Source: AQS-400, (202) 267-8990



**Labor Relations**

	BARGAINING UNITS	LABOR AGREEMENTS	EMPLOYEES REPRESENTED
<b>Unions.....</b>	<b>46</b>	<b>27</b>	<b>34,112</b>
AFGE.....	10	6	1,545
AFSCME (HQ).....	4	0	1,697
LIUNA.....	1	1	133
NAATS.....	1	1	147
NAGE.....	3	3	316
NATCA.....	14	8	18,386
NFFE.....	3	2	598
PAACE.....	5	2	375
PASS (AF/AEA).....	5	4	10,924

32

- AFGE --American Federation of Government Employees
- AFSCME --American Federation of State, County, and Municipal Employees
- LIUNA --Laborer's International Union of North America
- NAATS --National Association of Air Traffic Specialists
- NAGE --National Association of Government Employees
- NACTA --National Air Traffic Controllers Association
- NFFE --National Federation of Federal Employees
- PAACE --Professional Association of Aeronautical Center Employees
- PASS --Professional Aviation Safety Specialists

Source: AHL-400  
 (202) 267-3548

As of: 03/31/08

**FAA Finances**  
 (In Millions of Dollars)

	FY 2006 <sup>1</sup>	FY 2007 <sup>4</sup>	FY 2008
	Actual	Enacted	Request
<b>Budget Authority (BA)</b>			
Grants-In-Aid (Obligation Lim/Approp).....	3,515	3,515	2,750
Research, Engineering, & Development.....	137	130	140
Facilities and Equipment <sup>2</sup> .....	2,555	2,518	
Operations <sup>2</sup> .....	8,104	8,374	
Safety & Operations <sup>3</sup> .....			1,879
Air Traffic Organization <sup>3</sup> .....			9,308
<b>Total.....</b>	<b>14,310</b>	<b>14,537</b>	<b>14,077</b>
<b>Obligations Incurred--Operations</b>			
<b>Appropriation by Line of Business</b>			
Air Traffic Organization (ATO).....	6,732	6,740	6,965
Aviation Safety (AVS).....	956	1,003	1,109
Commercial Space Transportation (AST).....	11	12	13
Staff Offices (SO).....	439	619	758
<b>Total.....</b>	<b>8,138</b>	<b>8,374</b>	<b>8,845</b>
<b>Airport Grant Obligations (NET)</b>			
Primary Airports & Cargo.....	1,007	977	703
States/Territories/Insular/Alaska Supp.....	706	702	626
Carryover Entitlements.....	432	448	448
Discretionary Fund.....	850	809	863
Small Airport Fund.....	430	467	0
<b>Total.....</b>	<b>3,424</b>	<b>3,402</b>	<b>2,640</b>
<b>Total FAA Outlays.....</b>	<b>14,245</b>	<b>14,596</b>	<b>15,173</b>
<b>Trust Fund Receipts from Excise Taxes and Interest</b>			
Transportation of Persons by Air.....	7,423	7,795	8,191
Transportation of Property.....	479	586	624
Use of International Air Facilities.....	1,994	2,091	2,193
Aviation Fuel Commercial Use.....	44	498	512
Aviation Fuel (Other Than Gas).....	640	307	338
Aviation Gasoline.....	10	39	40
<b>Total Tax Revenue.....</b>	<b>10,590</b>	<b>11,316</b>	<b>11,898</b>
Interest revenue.....	495	495	478
<b>Total Tax &amp; Interest Revenue.....</b>	<b>11,085</b>	<b>11,811</b>	<b>12,376</b>

Numbers may not add due to rounding. <sup>1</sup> FY06 reflects across-the-board rescission of 1% and hurricane supplemental funding for \$40.6M in Facilities and Equipment per P.L. 109-148.

<sup>2</sup> Starting in FY 2008, this account will no longer receive appropriations. Funding will go to the new Safety & Operations and ATO accounts.

<sup>3</sup> New account starting in FY 2008. Includes both traditional Operations and Facilities & Equipment funds.

ATSIARA are combined into the new ATO structure.

<sup>4</sup> Includes Section 111 funding

As of: 09/30/07

Source: ABU-100  
 (202) 267-5060

**FAA NAS Operational Facilities**  
**(As of October 31)**

	2007	2006	2005
<b>NAS Operational Facilities<sup>1</sup></b> .....	<b>59,140</b>	<b>40,639</b>	<b>40,847</b>
Communications.....	18,823	14,273	14,344
Automation.....	1,360	3,896	3,900
Environment.....		6,083	6,122
Infrastructure.....	17,848		
Mission Support.....	4,173		
Navigation.....	12,362	11,033	11,085
Surveillance.....	1,900	1,804	1,848
Weather.....	2,674	3,550	3,548
<b>Air Traffic Control Facilities<sup>2</sup></b>			
Air Route Traffic Control Center.....	21	21	21
Airport Traffic Control Tower.....	512	517	517
Flight Service <sup>3</sup> .....	71	75	76
Flight Service Stations.....	47	16	16
Automated Flight Service Stations...	24	60	60

<sup>1</sup> Includes All Responsibility Codes

<sup>2</sup> Included in NAS operational facilities.

<sup>3</sup> Flight Service include Flight Service Stations and Automated Flight Service Stations.

As of: 10/31/07

Source: AOP-200  
 (202) 267-5288

## FAA Officials

### Washington Headquarters

Routing Symbol	Officials
AOA	<b>Administrator</b> <b>Robert A. Sturgell (A), 202-267-3111</b> Jana Murphy, Chief of Staff, 202-267-7416 Vacant, Senior Counsel to AOA, 202-267-7417
ADA	<b>Deputy Administrator</b> <b>Vacant, 202-267-8111</b> Shirley Miller, Acting, Senior Advisor, 202-267-9063
AJO	<b>Chief Operating Officer, Air Traffic Organization</b> <b>Henry P. Krakowski, 202-493-5602</b>
AJA	Acquisition & Business Services Vice President, James H. Washington, 202-267-7222
AJC	Communications Services Vice President, Sandra M. Sanchez, 202-493-5154
AJE	En Route & Oceanic Service Vice President, Richard L. Day, 202-385-8501
AJF	Finance Services Senior Vice President, Eugene D. Juba, 202-267-3022
AJP*	NextGen and Operations Planning Senior Vice President, Victoria Cox, 202-267-7111
AJR*	System Operations Services Vice President, Nancy Kalinowski, 202-267-3666
AJS*	Safety Services Vice President, Robert Tarter, 202-385-4778
AJT	Terminal Services Vice President, David B. Johnson, 202-385-8801
AJW	Technical Operations Services Vice President, Steven B. Zaidman, 202-267-3366
AJO-3	Joint Planning & Development Office Director, Charles Leader, 202-220-3300
ABA	<b>Assistant Administrator for Financial Services</b> <b>Ramesh K. Punwani, CFO, 202-267-9105</b> Deputy, John F. Hennigan, 202-267-8928
ABU	<i>Office of Budget</i> Director, Carol Rose, 202-267-8010
AFC	<i>Office of Financial Controls</i> Director, Carl Burrus, 202-267-7140
AFM	<i>Office of Financial Management</i> Director, Tim Lawler, 202-267-3018
ACR	<b>Assistant Administrator for Civil Rights</b> <b>Fanny Rivera, 202-267-3254</b> Deputy, Barbara A. Edwards, 202-267-3264
AEP	<b>Asst. Admin. for Aviation Policy, Planning &amp; Environment</b> <b>Dan K. Elwell, 202-267-3927</b> Deputy, Nancy LoBue, 202-267-7954

\* Updated this issue  
 As of: 06/09/08

Source: ABA-1  
 (202) 267-9105

**FAA Officials**  
**Washington Headquarters--(Cont)**

Routing Symbol	Officials
AEE	Office of Environment and Energy Director, Carl Burtleson, 202-267-3576
APO	Office of Aviation Policy and Plans Director, Nan Shellabarger, 202-267-3274
AGC	<b>Chief Counsel</b> <b>Kerry B. Long, 202-267-3222</b> Deputy Chief Counsel for Policy and Adjudication James W. Whitlow, 202-267-3773 Deputy Chief Counsel for Operations Marc L. Warren, 202-267-3773
AGI	<b>Asst. Administrator for Government &amp; Industry Affairs</b> <b>Megan Rosia, 202-267-3277</b> Deputy, Chris Brown, 202-267-8211
AHR	<b>Asst. Administrator for Human Resource Management</b> <b>Ventris C. Gibson, 202-267-3456</b> Deputy, Joseph N. Miniace, 202-267-3979
AHA	Office of the Accountability Board Executive Director, Maria Fernandez-Greczmiel, 202-267-3065
AHD	Office of Corporate Learning Executive Director, Darlene Freeman, 202-267-9041
AHF	HR Field Operations Executive Director, Karen Johnson, 847-294-7315
AHL	Office of Labor Management Relations Executive Director, Melvin Harris, 202-267-3979
AHP	Office of Human Resources Management Programs and Policies Executive Director, Sue A. Engelhardt, 202-267-3850
AIO	<b>Assistant Administrator for Information Services</b> <b>David M. Bowen, CIO, 202-493-4570</b>
AIS	Office of Information Systems Security Director, Michael F. Brown, 202-267-7104
AOT	Office of Information Technology Optimization Director, Michael W. Miller, 202-493-4570
AES	Office of Information Technology Enterprise Director, Robert Rovinsky, 202-493-4019
ARD*	Office of Information Technology Research and Development Chief Technology Officer, Diana Young (A), 202-385-8056
AOC*	<b>Assistant Administrator for Communications</b> <b>Lynn Tierney, Acting, 202-267-3883</b> Deputy, External Communications, Laura Brown, 202-267-3883 Deputy, Internal Communications, Gerald Lavey, 202-267-9499
API*	<b>Asst. Administrator for International Aviation</b> <b>Di Reimold (A), 202-385-8900</b> Deputy, Di Reimold, 202-385-8900
ARC	<b>Assistant Administrator for Regions/Center Operations</b> <b>Ruth Leverenz, 202-267-7369</b> Deputy, Paula Lewis, 202-267-7369
ALO*	Aviation Logistics Organization Director, Marnie Mallory, 202-267-7369

## FAA Officials

Washington Headquarters--(Cont.)	
Routing Symbol	Officials
ASH	Lynne A. Osmus, 202-267-7211 Deputy, Claudio Manno, 202-267-7211
ADG*	Office of Hazardous Materials Director, Christopher Bonanti, 202-267-9864
AEO*	Office of Emergency Operations, Communications and Investigations Director, Chris Rocheleau, 202-267-8075
AHS*	Office of Field Operations Director, Thomas D. Ryan, 202-267-7211
AIN*	Office of Security Director, Bruce Herron, 202-267-7714
ARP	Associate Administrator for Airports D. Kirk Shaffer, 202-267-9471 Deputy, Catherine M. Lang, 202-267-8738
AAS*	Office of Airport Safety and Standards Director, Michael I. O'Donnell, 202-267-3053
APP	Office of Airport Planning & Programming Director, Benito DeLeon, 202-267-8775
AST*	Assoc. Adm. for Commercial Space Transportation Dr. George C. Nield, 202-267-7793 Deputy, Vacant, 202-267-7848
AVS	Associate Administrator for Aviation Safety Nicholas A. Sabatini, 202-267-3131 Deputy, Peggy Gilligan, 202-267-7804
AAI	Office of Accident Investigation Director, Steven B. Wallace, 202-267-9612
AAM	Office of Aviation Medicine Director, Frederick Tilton, MD, 202-267-3535
AFS	Flight Standards Service Director, James Ballough, 202-267-8237
AIR	Aircraft Certification Service Director, John J. Hickey, 202-267-8235
AOV	Office of Air Traffic Oversight Director, Anthony Ferrante, 202-267-5202
AQS*	Quality, Integration and Executive Service Director, Tina Amereihn (A), 202-493-5717
ARM	Office of Rulemaking Director, Pamela Hamilton-Powell, 202-267-9677
ASA*	Office of Aviation Safety Analytical Services Director, Jay J. Hardee, 202-267-9119
Duty Officer	(202) 267-3333

## **FAA Officials**

---

### **Major Field Organizations**

<b>Routing Symbol</b>	<b>Officials</b>
<b>AAL</b> .....	<b>Alaskan Region, Regional Administrator</b> <b>Michael A. Cirillo, 907-271-5645</b> 222 West 7th Avenue, Box 14 Anchorage, Alaska 99513-7587 Duty Officer, 907-271-5936
<b>ACE</b> .....	<b>Central Region, Regional Administrator</b> <b>Christopher Blum, 816-329-3050</b> 901 Locust Kansas City, Missouri 64106 Duty Officer, 816-329-3000
<b>ACT</b> .....	<b>William J. Hughes Technical Center, Director</b> <b>Wilson N. Felder, Ph.D., 609-485-6641</b> Atlantic City International Airport New Jersey 08405 Duty Officer, 609-485-6482
<b>AEA</b> .....	<b>Eastern Region, Regional Administrator</b> <b>Manny Weiss, 718-553-3000</b> 1 Aviation Plaza 159-30 Rockaway Blvd. Jamaica, New York 11434-4809 Duty Officer, 718-553-3100
<b>AGL</b> .....	<b>Great Lakes Region, Regional Administrator</b> <b>Barry D. Cooper, 847-294-7294</b> 2300 East Devon Avenue Des Plaines, Illinois 60018 Duty Officer, 847-294-8400
<b>AMC</b> .....	<b>Mike Monroney Aeronautical Center, Director</b> <b>Lindy Ritz, 405-954-4521</b> 6500 South MacArthur Oklahoma City, Oklahoma 73125 Duty Officer, 405-954-3583

**FAA Officials**  
**Major Field Organizations--(Cont.)**

<b>Routing Symbol</b>	<b>Officials</b>
<b>ANE</b> .....	<b>New England Region, Regional Administrator</b> <b>Amy Lind Corbett, 781-238-7020</b> 12 New England Executive Park Burlington, Massachusetts 01803 Duty Officer, 781-238-7001
<b>ANM</b> .....	<b>Northwest Mountain Region, Regional Administrator</b> <b>Dennis Roberts, 425-227-2001</b> 1601 Lind Avenue, S.W. Renton, Washington 98055-4056 Duty Officer, 425-227-2000
<b>ASO</b> .....	<b>Southern Region, Regional Administrator</b> <b>Doug Murphy, 404-305-5000</b> 1701 Columbia Avenue College Park, Georgia 30337 Duty Officer, 404-305-5180
<b>ASW</b> .....	<b>Southwest Region, Regional Administrator</b> <b>Teresa Bruner, Acting, 817-222-5001</b> 2601 Meacham Blvd. Ft. Worth, Texas 76137-4298 Duty Officer, 817-222-5006
<b>AWP</b> .....	<b>Western-Pacific Region, Regional Administrator</b> <b>William C. Withycombe, 310-725-3550</b> 15000 Aviation Boulevard Hawthorne, California 90261 Duty Officer, 310-725-3300



## FAA Officials

### International Area Offices

Routing Symbol	Officials
<b>AEU</b> .....	<b>Europe, Africa, &amp; Middle East Area Office, Director</b> <b>Anthony Fazio, 011-322-508-2700</b> American Embassy, Brussels PSC 82 Box 002 APO AE 09724-1011
<b>AWH</b> .....	<b>Western Hemisphere Area Office, Director</b> <b>Cecilia Capestany, Acting, 305-716-3300</b> 8600 NW 36th Street Miami, FL 33166
<b>APC*</b> .....	<b>Asia-Pacific Area Office, Director</b> <b>Christopher Metts, 011-86-10-8532-1761</b> American Embassy 27 Napier Road Singapore 258508

**FEDERAL AVIATION ADMINISTRATION  
FLIGHT PLAN 2008-2012**

**INCREASED SAFETY**

***Goal:*** *Achieve the lowest possible accident rate and constantly improve safety.*

1. Reduce commercial air carrier fatalities.
2. Reduce the number of fatal accidents in general aviation.
3. Reduce the risk of runway incursions.
4. Ensure the safety of commercial space launches.
5. Enhance the safety of FAA's air traffic systems.
6. Implement a Safety Management System (SMS)

**Performance Targets:**

Obj. 1 Cut the rate of fatalities per 100 million persons on board in half by FY 2025.

Obj. 2 By FY 2009, reduce the number of general aviation and nonscheduled Part 135 fatal accidents from the 1996-1998 average of 385 per year to no more than 319 accidents per year.

Obj. 2 By FY 2009, reduce accidents in Alaska for general aviation and all Part 135 operations from the 2000-2002 average of 130 accidents per year to no more than 99 accidents per year.

Obj. 3 By FY 2010, limit Category A and B (most serious) runway incursions to a rate of no more than 0.450 per million operations, and maintain or improve through FY 2012.

Obj. 4 No fatalities, serious injuries, or significant property damage to the uninvolved public during licensed or permitted space launch and reentry activities.

As of 10/01/07

Source: APO-120  
(202) 267-3220

**INCREASED SAFETY Performance Targets (Continued)**

Obj. 5 Limit Category A and B (most serious) operational errors to a rate of no more than 4.27 per million activities by FY 2012.

Obj. 6 By FY 2010, implement SMS in the Air Traffic Organization, Office of Aviation Safety, and Office of Airports. By FY 2012, implement SMS policy in all appropriate FAA organizations.

## **GREATER CAPACITY**

**Goal:** *Work with local governments and airspace users to provide increased capacity in the United States airspace system that reduces congestion and meets projected demand in an environmentally sound manner.*

### **Objectives:**

1. Increase capacity to meet projected demand and reduce congestion.
2. Increase reliability and on-time performance of scheduled carriers.
3. Address environmental issues associated with capacity enhancements.

### **Performance Targets:**

Obj. 1 Achieve an average daily airport capacity for the 35 OEP airports of 104,338 arrivals and departures per day by FY 2011 and maintain through FY 2012.

Obj. 1 Commission nine new runway/taxiway projects, increasing the annual service volume of the 35 OEP airports by at least 1 percent annually, measured as a five-year moving average, through FY 2012.

Obj. 1 Sustain adjusted operational availability of 99.7% for the reportable facilities that support the 35 OEP airports through FY 2012.

Obj. 1 Achieve an average daily airport capacity for the seven major metropolitan areas of 39,484 arrivals and departures per day by 2009, and maintain through FY 2012.

Obj. 2 Achieve a NAS on-time arrival rate of 88.76 percent at the 35 OEP airports by FY 2011 and maintain through FY 2012.

Obj. 3 Reduce the number of people exposed to significant noise by 4 percent per year through FY 2012.

Obj. 3 Improve aviation fuel efficiency by another 1 percent over the FY 2007 level through FY 2008, and 1 percent each subsequent year through FY 2012 to 10 percent.

## **INTERNATIONAL LEADERSHIP**

**Goal:** *Increase the safety and capacity of the global civil aerospace system in an environmentally sound manner.*

**Objectives:**

1. Promote improved safety and regulatory oversight in cooperation with bilateral, regional, and multilateral aviation partners.
2. Promote seamless operations around the globe in cooperation with bilateral, regional, and multilateral aviation partners.

**Performance Targets:**

Obj. 1 Work with the Chinese aviation authorities and industry to adopt 27 proven Commercial Aviation Safety Team (CAST) safety enhancements by FY 2011. This supports China's efforts to reduce commercial fatal accidents to a rate of 0.030 fatal accidents per 100,000 departures by FY 2012.

Obj. 1 Conclude at least eight (new or expanded) bilateral safety agreements that will facilitate an increase in the ability to exchange aviation products and services by FY 2012.

Obj. 1 Secure a yearly increase in international aviation development funding to strengthen the global aviation infrastructure. Increase the

FY 2007 external funding baseline target of \$12 million in \$3 million annual increments for an FY 2012 target of \$27 million.

Obj. 2 By FY 2012, expand the use of NextGen Air Transportation System (NextGen) performance-based systems and concepts to five priority countries.

## **ORGANIZATIONAL EXCELLENCE**

***GOAL:*** *Ensure the success of the FAA's mission through stronger leadership, a better-trained and safer workforce, enhanced cost-control measures, and improved decision-making based on reliable data.*

### **Objectives:**

1. Make the organization more effective with stronger leadership, increased commitment of individual workers to fulfill organization-wide goals, and a better prepared, better trained, safer, diverse workforce.
2. Improve financial management while delivering quality customer service.
3. Make decisions based on reliable data to improve our overall performance and customer satisfaction.
4. Enhance our ability to respond to crises rapidly and effectively, including security-related threats and natural disasters.

### **Performance Targets:**

Obj. 1 Increase the score of the Employee Attitude Survey measure for the areas of management effectiveness and accountability by at least 5 percent, over the FY 2003 baseline of 35 percent by FY 2010 and maintain through FY 2012.

Obj. 1 By FY 2010, 70 percent of FAA external hires will be filled within OPM's 45-day standard for government-wide hiring.

Obj. 1 Reduce the total workplace injury and illness case rate to no more than 2.44 per 100 employees by the end of FY 2011, and maintain through FY 2012.

Obj. 1 Reduce grievance processing time by 30 percent by FY 2010, and maintain the reduction through FY 2012.

Obj. 1 Maintain the air traffic control workforce at or above the projected annual totals in the Air Traffic Controller Workforce Plan.

**ORGANIZATIONAL EXCELLENCE Performance Targets (Continued)**

Obj. 2 Increase cost reimbursable contract closeouts by 1 percent per year, from 86 percent in FY 2008 to 90 percent in FY 2012.

Obj. 2 Organizations throughout the agency will continue to implement cost efficiency initiatives such as: 10-15% savings for strategic sourcing for selected products and services; by the end of FY 2009, reduce leased space for Automated Flight Service Stations from approximately 510,000 square feet to approximately 150,000 square feet; 3 percent reduction in help desk operating costs through consolidations; and annual reduction of \$15 million in Information Technology operating costs.

Obj. 2 Obtain an unqualified opinion on the agency's financial statements (Clean Audit with no material weaknesses) each fiscal year.

Obj. 3 In FY 2008, 90 percent of major system acquisition investments are within 10 percent of annual budget and maintain through FY 2012.

Obj. 3 In FY 2008, 90 percent of major system acquisition investments are on schedule and maintain through FY 2012.

Obj. 3 Increase agency scores on the American Customer Satisfaction Index, which surveys commercial pilots.

Obj. 3 Achieve zero cyber security events that disable or significantly degrade FAA services.

## NOTES



## NOTES

## NOTES

**Intentionally left blank**

## 2008

January							February							
		<b>1</b>	2	3	4	5						<b>1</b>	2	
6	7	8	9	10	11	12	3	4	5	6	7	8	9	
13	14	15	16	17	18	19	10	11	12	13	14	15	16	
20	<b>21</b>	22	23	24	25	26	17	<b>18</b>	19	20	21	22	23	
27	28	29	30	31			24	25	26	27	28	29		
March							April							
						<b>1</b>			<b>1</b>	2	3	4	5	
2	3	4	5	6	7	8	6	7	8	9	10	11	12	
9	10	11	12	13	14	15	13	14	15	16	17	18	19	
16	17	18	19	20	21	22	20	21	22	23	24	25	26	
23	24	25	26	27	28	29	27	28	29	30				
30	31													
May							June							
					<b>1</b>	2	3	<b>1</b>	2	3	4	5	6	7
4	5	6	7	8	9	10	8	9	10	11	12	13	14	
11	12	13	14	15	16	17	15	16	17	18	19	20	21	
18	19	20	21	22	23	24	22	23	24	25	26	27	28	
25	<b>26</b>	27	28	29	30	31	29	30						
July							August							
		<b>1</b>	2	3	<b>4</b>	5						<b>1</b>	2	
6	7	8	9	10	11	12	3	4	5	6	7	8	9	
13	14	15	16	17	18	19	10	11	12	13	14	15	16	
20	21	22	23	24	25	26	17	18	19	20	21	22	23	
27	28	29	30	31			24	25	26	27	28	29	30	
September							October							
	<b>1</b>	2	3	4	5	6				<b>1</b>	2	3	4	
7	8	9	10	11	12	13	5	6	7	8	9	10	11	
14	15	16	17	18	19	20	12	<b>13</b>	14	15	16	17	18	
21	22	23	24	25	26	27	19	20	21	22	23	24	25	
28	29	30					26	27	28	29	30	31		
November							December							
						<b>1</b>		<b>1</b>	2	3	4	5	6	
2	3	4	5	6	7	8	7	8	9	10	11	12	13	
9	10	<b>11</b>	12	13	14	15	14	15	16	17	18	19	20	
16	17	18	19	20	21	22	21	22	23	24	<b>25</b>	26	27	
23	24	25	26	<b>27</b>	28	29	28	29	30	31				
30														

Legal holidays and Federal holidays observed are in **BOLDFACE**.

## 2009

January							February							
				<b>1</b>	2	3	1	2	3	4	5	6	7	
4	5	6	7	8	9	10	8	9	10	11	12	13	14	
11	12	13	14	15	16	17	15	<b>16</b>	17	18	19	20	21	
18	<b>19</b>	20	21	22	23	24	22	23	24	25	26	27	28	
25	26	27	28	29	30	31								
March							April							
1	2	3	4	5	6	7	1	2	3	4				
8	9	10	11	12	13	14	5	6	7	8	9	10	11	
15	<b>16</b>	17	18	19	20	21	12	13	14	15	16	17	18	
22	23	24	25	26	27	28	19	20	21	22	23	24	25	
29	30	31	26	27	28	29	30							
May							June							
					1	2	1	2	3	4	5	6		
3	4	5	6	7	8	9	7	8	9	10	11	12	13	
10	11	12	13	14	15	16	14	15	16	17	18	19	20	
17	18	19	20	21	22	23	21	22	23	24	25	26	27	
24	<b>25</b>	26	27	28	29	30	28	29	30					
31														
July							August							
			1	2	<b>3</b>	4							1	
5	6	7	8	9	10	11	2	3	4	5	6	7	8	
12	13	14	15	16	17	18	9	10	11	12	13	14	15	
19	20	21	22	23	24	25	16	17	18	19	20	21	22	
26	27	28	29	30	31	23	24	25	26	27	28	29		
							30	31						
September							October							
			1	2	3	4	5				1	2	3	
6	<b>7</b>	8	9	10	11	12	4	5	6	7	8	9	10	
13	14	15	16	17	18	19	11	<b>12</b>	13	14	15	16	17	
20	21	22	23	24	25	26	18	19	20	21	22	23	24	
27	28	29	30	25	26	27	28	29	30	31				
November							December							
1	2	3	4	5	6	7	1	2	3	4	5			
8	9	10	<b>11</b>	12	13	14	6	7	8	9	10	11	12	
15	16	17	18	19	20	21	13	14	15	16	17	18	19	
22	23	24	25	<b>26</b>	27	28	20	21	22	23	24	<b>25</b>	26	
29	30	27	28	29	30	31								

Legal holidays and Federal holidays observed are in **BOLDFACE**.

## ***FAA VALUES***

***Safety Is Our Passion.***

*We're the world leaders in Aviation Safety.*

***Quality Is Our Trademark.***

*We serve our country, our customers, and each other.*

***Integrity Is Our Character.***

*We do the right thing, even when no one is looking.*

***People Are Our Strength.***

*We treat people as we want to be treated.*