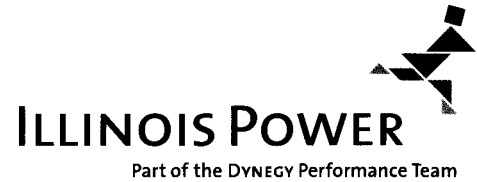


Illinois Power Company
500 South 27th Street
Decatur, Illinois 62521-2200

2001 APR -5 PM 1:35

April 3, 2001



Information Officer
Research and Special Programs Administration
Department of Transportation, Room 7128
400 Seventh St., SW
Washington DC 20590

Re: Underwater Abandoned Pipeline Facilities

Per the requirements of 49 CFR 192.727, Illinois Power is submitting the attached data pertaining to two underwater abandoned pipeline facilities that were abandoned prior to Oct. 10, 2000. This data includes the location, size, date of abandonment, method of abandonment, and maps.

To the best of my knowledge, I have provided all of the requested information that is reasonably available about the subject abandoned pipeline facilities and, to the best of my knowledge, these facilities were abandoned in accordance with all applicable State and Federal requirements in effect at the time of the abandonment.

Sincerely,



Curt Kemppainen
Senior Gas Transmission Engineer

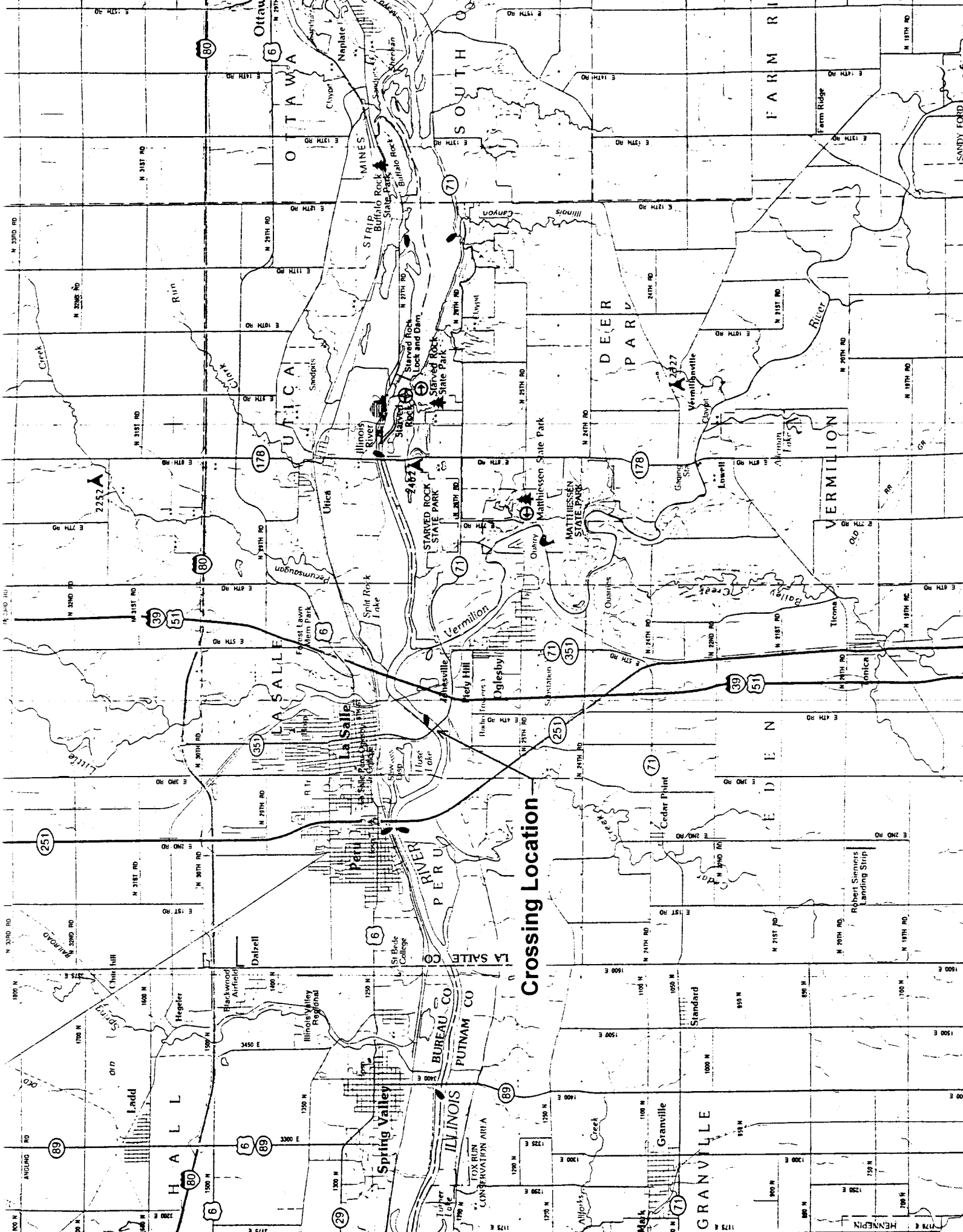
CDK:ceh

Attachments

Underwater Abandoned Pipeline Facilities

3/16/01

City	River	Facility Location	Facility Description	Method of Abandonment	Date of Abandonment
LaSalle	Illinois	Sec. 22, T33N, R1E	(2) 4" Steel Pipelines - System 1532	Purge / Cut & Cap	07/24/92
New Athens	Kaskaskia	Sec. 28, T2S, R7W	16" Steel Pipeline - System 5225	Purge / Cut & Cap	01/09/68



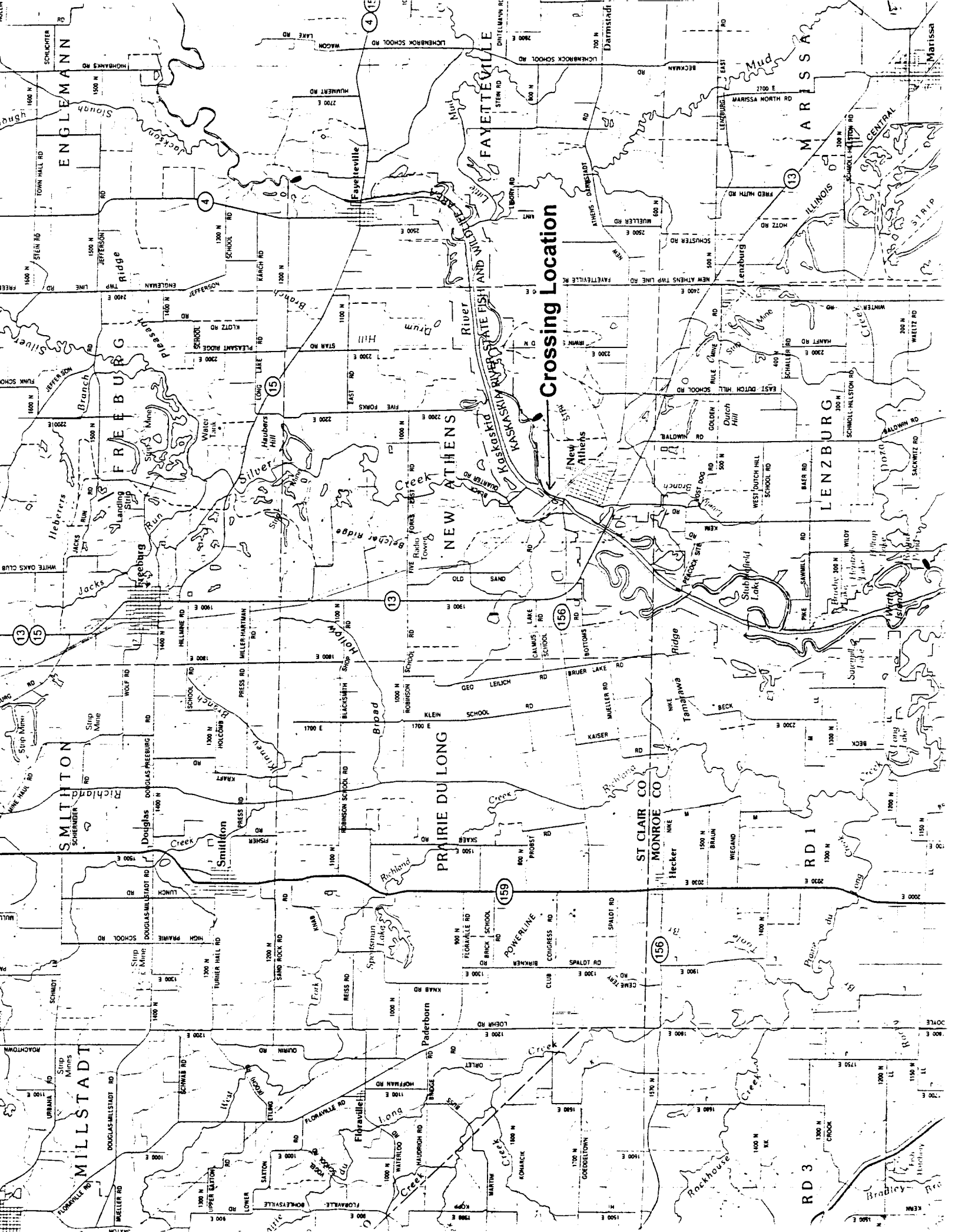
Crossing Location

Map showing the Illinois River crossing location between Bureau and Putnam counties, Illinois. The map includes a grid of latitude and longitude coordinates, major roads (I-55, I-74, I-80, I-174), and various place names (La Salle, Vermilion, Granite, etc.). The Illinois River is shown flowing through the region, with several crossings marked. The crossing location is indicated by a red line and labeled 'Crossing Location'.

Underwater Abandoned Pipeline Facilities

3/16/01

City	River	Facility Location	Facility Description	Method of Abandonment	Date of Abandonment
LaSalle	Illinois	Sec. 22, T33N, R1E	(2) 4" Steel Pipelines - System 1532	Purge / Cut & Cap	07/24/92
New Athens	Kaskaskia	Sec. 28, T2S, R7W	16" Steel Pipeline - System 5225	Purge / Cut & Cap	01/09/68



Crossing Location

PRAIRIE DU LONG

NEW ATHENS

FAYETTEVILLE

FREEBURG

LENZBURG

SMILITON

MILLSTADT

RD 1

RD 3

**ST CLAIR CO
MONROE CO**

MARISSA

ILLINOIS

CENTRAL

STRIIP

WILDY

WILSON

WILSON

WILSON

WILSON

WILSON

ENGLMANN

ENGLMANN

ENGLMANN

ENGLMANN

ENGLMANN

ENGLMANN

ENGLMANN

ENGLMANN

ENGLMANN

ENGLMANN

Branch

Branch

Branch

Branch

Branch

Branch

Branch

Branch

Branch

Branch

Branch

Branch

Branch

Branch

Branch

Branch

Branch

Branch

Branch

Branch

Branch

Branch

Branch

Branch

Branch

Branch

Branch

Branch

Branch

Branch

Branch

Branch

Branch

Branch

Branch

Branch

Branch

Branch

Branch

Branch

Branch

Branch

Branch

Branch

Branch

Branch

Branch

Branch

Branch

Branch

Branch

Branch

Branch

Branch

Branch

Branch

Branch

Branch

Branch

Branch

Branch

Branch

Branch

Branch

Branch

Branch

Branch

Branch

Branch

Branch

Branch

Branch

Branch

Branch

Branch

Branch

Branch

Branch

Branch

Branch

Branch

Branch

Branch

Branch

Branch

Branch

Branch

Branch

Branch

Branch

Branch

Branch

Branch

Branch

Branch

Branch

Branch

Branch

Branch

Branch

Branch

Branch

Branch

Branch

Branch

Branch

Branch

Branch

Branch

Branch

Branch

Branch

Branch

Branch

Branch

Branch

Branch

Branch

Branch

Branch

Branch

Branch

Branch

Branch

Branch

Branch

Branch

Branch

Branch

Branch

Branch

Branch

Branch

Branch

Branch

Branch

Branch

Branch

Branch

Branch

Branch

Branch

Branch

Branch

Branch

Branch

Branch

Branch

Branch

Branch

Branch

Branch

Branch

Branch

Branch

Branch

Branch

Branch

Branch

Branch

Branch

Branch

Branch

Branch

Branch

Branch

Branch

Branch

Branch

Branch

Branch

Branch

Branch

Branch

Branch

Branch

Branch

Branch

Branch

Branch

Branch

Branch

Branch

Branch

Branch

Branch

Branch

Branch

Branch

Branch

Branch

Branch

Branch

Branch

Branch

Branch

Branch

Branch

Branch

Branch

Branch

Branch

Branch

Branch

Branch

Branch

Branch

Branch

Branch

Branch

Branch

Branch

Branch

Branch

Branch

Branch

Branch

Branch

Branch

Branch

Branch

Branch

Branch

Branch

Branch

Branch

Branch

Branch

Branch

Branch

Branch

Branch

Branch

Branch

Branch

Branch

Branch

Branch

Branch

Branch

Branch

Branch

Branch

Branch

Branch

Branch

Branch

Branch

Branch

Branch

Branch

Branch

Branch

Branch

Branch

Branch

Branch

Branch

Branch

Branch

Branch

Branch

Branch

Branch

Branch

Branch

Branch

Branch

Branch

Branch

Branch

Branch

Branch

Branch

Branch

Branch

Branch

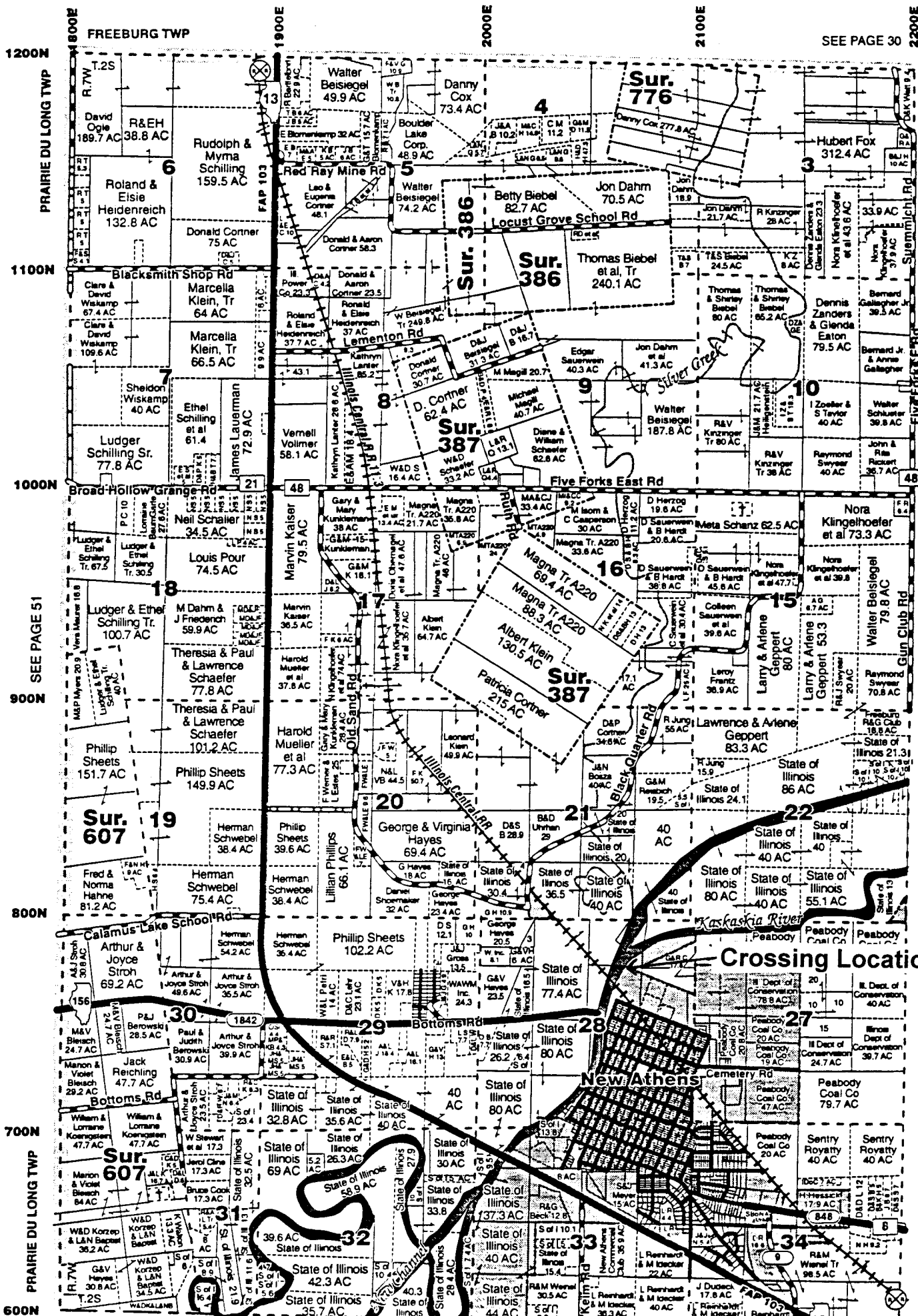
Branch

Branch

Branch

Branch

Branch



SEE PAGE 51

Crossing Location

New Athens