

Who We Are

The Salmon Heli-Rappellers are a team specialized aerial delivered wildland firefighters trained to operate in all the roles of initial attack fire suppression and support of fire management. We are committed to safety, each other, our program and the task at hand. Our program consists of 45-50 rappellers, with three to four helicopters; including one type III Long Ranger and two type II Bell 212s. As Salmon Heli-Rappellers we are flexible to work all types of wildland fires; from single tree two-person fires to large scale project fires. We are involved in all aspects of fire management which include rappelling for fire suppression, personnel and cargo transport, Air base operations, single resource assignments, "fire use" and supporting resource and fuels management activities.



The Salmon Heli-Rappellers support fire suppression from early June until late September. The Salmon-Challis National Forest hosts one of the largest fire occurrences in Region 4 with approximately 140 starts annually. Due to the extreme steep terrain of



the Salmon-Challis, Aerial delivered firefighters are a key initial attack resource. We are part of a national resource; frequent off-forest assignments and travel are expected with modules of rappellers on weekly rotation for 14 day assignments on the National type II helicopter. We also support other rappel programs through our booster program where rappellers are sent to other bases when needed.



What We're Looking For



Each season the Salmon Heli-Rappellers seek ten to twelve high quality employees for rappeller positions.

The traits that we encourage in candidates are-

- Diverse experiences and backgrounds
- Positive working attitude
- Strong work ethic
- Ability to work in stressful environments
- Ability to work with people

Applicants must...

- be 18 years of age at time of hire
- provide proof of U.S. citizenship
- have at least one season (three months or more) of experience in which their primary duty was that of a wildland firefighter. (Aviation experience is not a prerequisite.)

We also look for qualifications beyond basic wildland firefighter such as squad boss, incident commander type 4/5, chainsaw-faller experience, EMT and first responder, these are not required but are assets to the program.



Physical Fitness

Being physically fit is of the utmost importance as a firefighter and rappeller. We work in a physically demanding, stressful environment and are required to have the strength and endurance to work for many hours at a time without breaks. Showing up in good physical and mental condition is essential. **We strongly expect that you are above our recommended fitness goals.** The following is our recommended fitness goal-



- Push-ups (20 per minute)
- Pull-ups (5)
- Sit-ups (30 per minute)
- 1.5 miles in 11:40 or less
- Typical terrain pack out (90lbs)

Applicants must pass the Work Capacity Test (WCT) consisting of a three mile walk with a 45 pound pack in 45 minutes. Failure to pass the WCT will lead to dismissal.

Physical training is performed in the morning after the Initial Attack up-team has been established and rigged the aircraft. All crewmembers and overhead participate in physical training unless sick or injured. Physical training during the course of the season includes running and hiking to increase cardiovascular thresholds.



Strength conditioning is accomplished through stretching, calisthenics, circuit training, free weights and physical fitness machines.

HELI-RAPPELLERS

Work Dates

Employment generally begins in Mid-May and ends in late September or early October. Crewmembers are hired on a Not to Exceed (NTE) 1039 hours in a 1 year basis as a GS-462-3 or GS-462-4.

PAY

Most applicants qualify as a GS-462-4 with an hourly wage of approximately \$12.73.

Overtime is paid for duty over 8 hours in a day at a rate of 150% of the base wage. For hazardous duty which includes fire suppression activities, helicopter rappelling, and a variety of other helicopter related operations, employees are compensated an additional 25% of base wage for all hours worked during that day.



A Salmon Heli-Rappeller averages

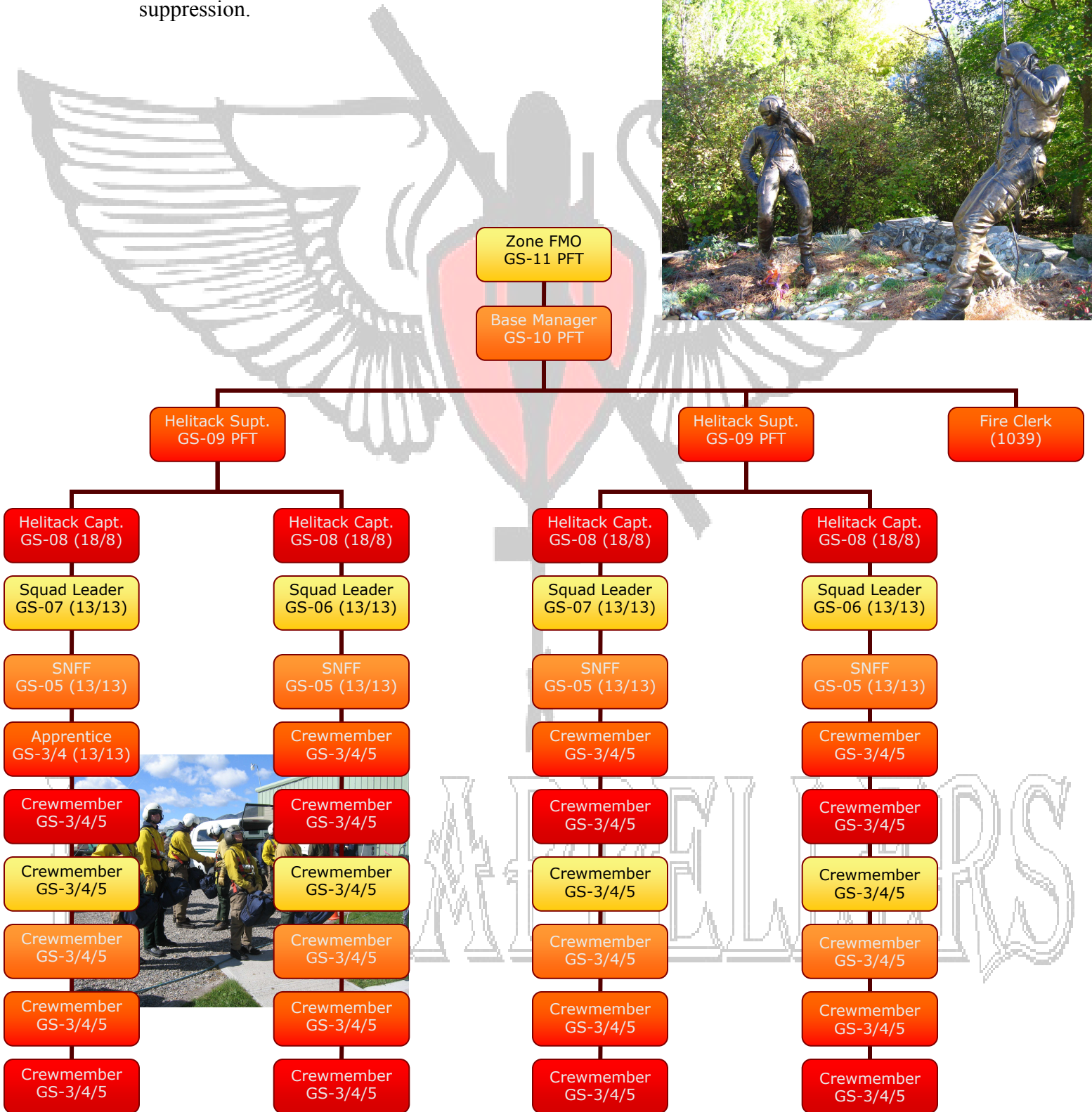
approximately 500 hours of overtime each fire season.



HELICOPTER RAPPPELLERS

Crew Composition

The Salmon Heli-Rappel program is managed by one Air Base Manager, two Helicopter Superintendent's, four Captains and four Squad Leaders. There are also four GS-5 Senior Firefighters with WAE appointments. The program also consists of GS-5, GS-4 and GS-3 seasonal firefighters. The Superintendents, Captains, and Squad Leaders lead/supervise firefighters, manage training, manage the aircraft, and participate in fire suppression.



Training

The first three weeks of the season, starting mid-May, are dedicated to classroom and field training. This training includes annual mandatory fire related training, refreshers, S-271 (Interagency Helicopter Training), and Rappel Training.



Trainees must demonstrate competence and proficiency in all aspects of the training to qualify as a rappeller and helicopter crewmember.



We are very supportive of career development of each individual and provide training opportunities when possible.



About the Forest



The Salmon-Challis National Forest covers over 4.3 million acres in east-central Idaho. The Forest is bordered by the Bitterroot Range of the North Central Rockies on the east, and to the west includes over 1.3 million acres of the Frank Church--River of No Return Wilderness. Rugged and remote, this country offers adventure, solitude and breathtaking scenery. The Forest also contains Mt. Borah, Idaho's tallest peak, the Wild & Scenic Salmon River, and the Middle Fork of the Salmon River. The area is a highly desired destination for hunting, fishing, white-water rafting, and the many other popular recreational pursuits. The Forest features diverse, rough topography, geologic conditions, and miles of streams with anadromous fish spawning habitat creating a highly complex land management situation.



The Forest Supervisors Office is located in Salmon, Idaho. There are currently seven administrative units on the Forest: Salmon-Cobalt, Challis, Yankee Fork, Lost River, Middle Fork, North Fork and Leadore Ranger Districts. For more information on the Forest or the Districts, visit the website:



www.fs.fed.us/r4/sc/

HELVETIA-RAFFELLERS

About the Area



Salmon, Idaho (www.salmonidaho.com)

The City: Salmon is the heart of the Salmon River Valley, surrounded by three mountain ranges, situated at the junction of Idaho State Highway 28 and U.S. Highway 93, and at the forks of the Lemhi and Salmon Rivers. The city has a population of approximately 3,100 and is the seat of Lemhi County which has a population of 8,000. The main industries are ranching, mining, timber and recreation. Salmon is known as the "White Water Capital of the World" serving as the hub of personal and outfitter jet boat and rafting river activities. At 4,000 feet elevation, the surrounding terrain varies greatly from rolling, arid hills to steep, forested slopes. For more information about the city and area, visit the website - www.salmonidaho.com



History: For thousands of years ancestors of the Shoshone-Bannock people lived in this region. Members of the Lewis and Clark Expedition are thought to be the first visitors here, crossing the Continental Divide to the east in the year 1805, guided by their Shoshoni member Sacajawea who recognized the area as her homeland and birthplace. It became a winter campsite for fur trappers including Jim Bridger, Kit Carson, and Jedediah Smith; and later traders and missionaries. The discovery of gold in 1866 created a mining boom. As time passed, ranchers, farmers and



businessmen established a permanent community rich in historic lore of the early West.



Climate: Salmon enjoys a dry, warm climate during the summer and fall months with daily highs averaging between 75 to 95 degrees, and nightly lows from 45 to 60 degrees. The climate in winter is ideal for snow sports, the low temperatures averaging from 14 to 25 degrees with occasional sub-zero readings.

Shopping and Services: Salmon is a self-contained community with a full variety of shopping, business, medical, and professional services. In addition to basic services, there are a variety of specialty shops and art galleries. Salmon also has nursing and



residential care facilities, hospice, Child Development Center and a spectrum of social services. Most service clubs and associations are represented. The public library offers computer and other services, and there are two internet access providers.

Salmon has a Mayor, City Council, City Administrator form of government, with elected County Commissioners, and is under the protection of the City Police, County Sheriff's Department and local Fire Station.

Utilities that serve the city are the Idaho Power and Light Company and the Century Telephone of Idaho Inc.

Media include an AM/FM radio station, satellite and cable TV and the weekly Recorder-Herald newspaper.



HELI-RAPPELLERS

Local Fuels and Fire Behavior:

The fuel models found on the Salmon-Challis National Forest vary with elevation and aspect. In the lower elevations up to about 6000', the common fuel models represented are fuel model 1 and 2 Grass Group and fuel models 9 and 10 Timber Group. Above 6000' up to timber line fuels are best represented by fuel models 8, 9 and 10 Timber Group.



Fire behavior in the Salmon River Breaks is well known for rapid rates of spread. Fires in our grass fuel models moves rapidly uphill. Frequent roll out is common on these fires. Downhill line construction tactics are frequently employed when the fire can be safely anchored above the head and crews burn out as line construction progresses downhill.

A large portion of the Salmon river breaks country is in a thermal belt, and a poor humidity recovery is often seen in this area resulting in very active fire behavior in the day/night portions of the burn period. On other parts of the forest in the timber fuel models, fire behavior varies season to season depending on spring and summer precipitation. Many of our fires are be adequately staffed with a

two person “stick” of rappellers.


The use of Air tankers and helicopters is part of the tools we use to support fire suppression on the forest. Air tankers and retardant are used where terrain permits. The use of helicopters with bucket for water delivery is also a very effective method.







HELL-RAPPPELLERS

Salmon Heli-Rappel Crew Application Process

1. **Apply online** at <http://www.avuecentral.com/>
2. **Create a profile** – Already have one? Make sure it is updated.
3. **Search for jobs**
 - ❑ Edit all information in the search box – *see example below*
 - ❑ Click *search for jobs* once the information has been edited.

* GRADE/SALARY RANGE	04 - 05	EDIT ●
SERIES	0462	EDIT ●
JOB TITLES	(Fire Protection/Safety Folder) Forestry Technician(Helitack)	EDIT ●
LOCATIONS	Idaho	EDIT ●
AGENCIES	 United States Forest Service USDA, Forest Service	EDIT ●
E-MAIL NOTIFICATION	Email notification of jobs that match my profile should be sent no more than once a week.	EDIT ●

- ❑ The search will produce a random vacancy list – *see example below*
- ❑ Scroll through the list to find the announcements listed below.
- ❑ **Click on GS-0462-04 or GS-0462-05 Forestry Technician (Helitack)**

	Forestry Technician (Helitack)	GS-0462-04 (TEMP-OCR-462-4-HLTK)	Multiple Locations	\$12.73	None	Eligible	 United States Forest Service	<input checked="" type="checkbox"/>
	Forestry Technician (Helitack)	GS-0462-05 (TEMP-OCR-462-5-HLTK)	Multiple Locations	\$14.24	None	Eligible	 United States Forest Service	<input checked="" type="checkbox"/>

4. **Click APPLY NOW** – this is on the left side menu
 - ❑ Fill out all **mandatory information** –start with Personal information – the program will automatically take you through all the mandatory steps that are needed for the Forestry Tech. position. *Click save at the bottom of each page you edit*
 - ❑ Under **Applicant information** select the location by state then city.
 - ❑ For the Salmon Heli-Rappel Crew select **Salmon, Id**
 - ❑ Under the *optional* section, attach a resume, references, etc.

HELL-RAPPELLERS

Contact Information

Salmon Airbase

Phone: 208-756-1624 or 1625

Address: Salmon Heli-Rappellers

311 McPherson Street

Salmon, Idaho 83467

Winter Phone: 208-756-5239/5240

www.myspace/salmonhelitack

www.avuedigitalservices.com

www.usajobs.com

HELI-RAPPELLERS

Pictures and Movies **COMING SOON**

SALMON



HELI-RAPPELLERS

SALMON



Who We Are
What we're looking for
Physical Fitness
Work Dates/ Pay
Crew Composition
Training
About the Forest
About the Salmon Area
Local Fuels and Fire Behavior
Application Process
Contact Information
Pictures and Movies

Links
www.myspace.com/salmonhelitack
www.digitalservices.com
usajobs.gov

HELL-RAPPELLERS