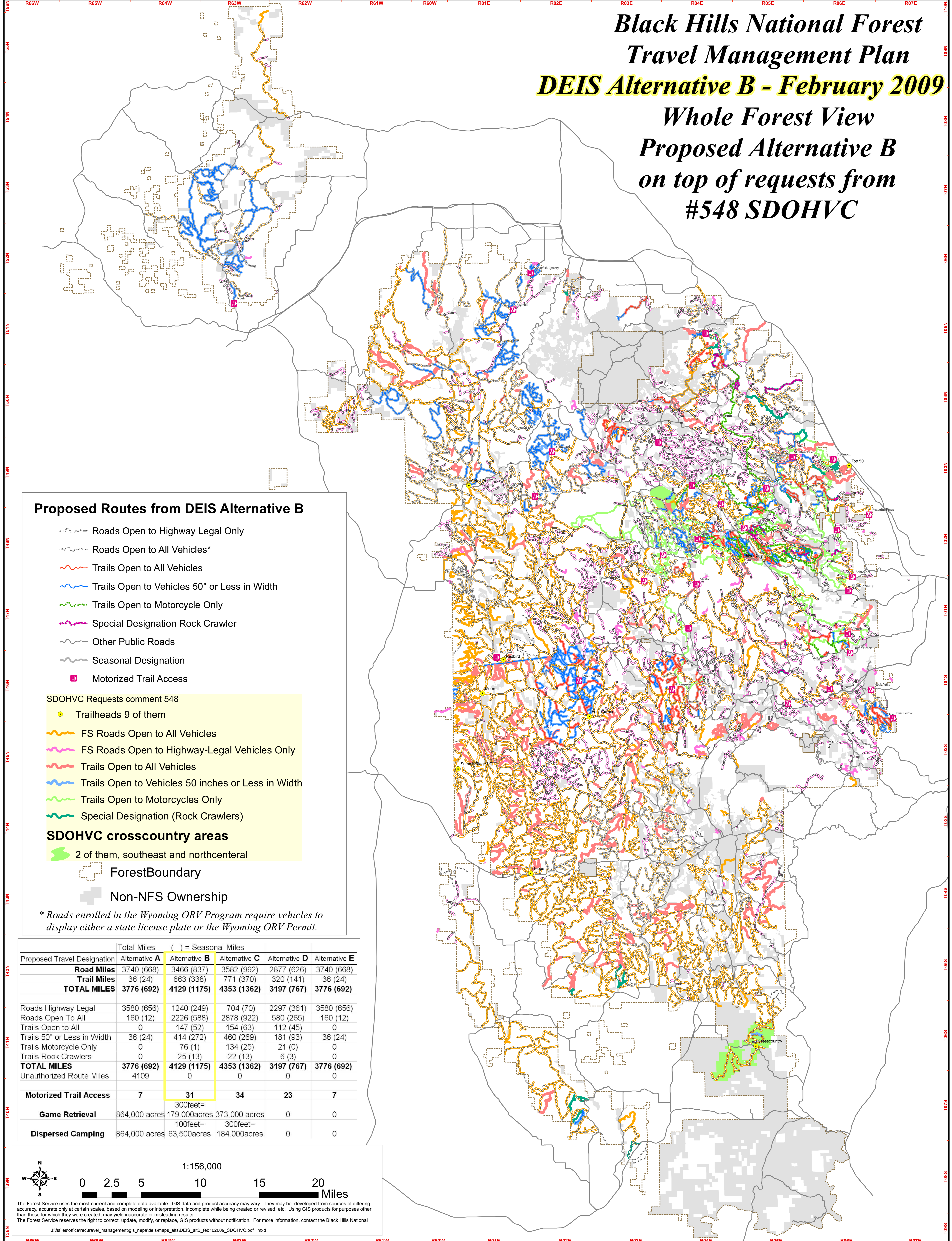


Black Hills National Forest Travel Management Plan DEIS Alternative B - February 2009 Whole Forest View Proposed Alternative B on top of requests from #548 SDOHVC



Proposed Routes from DEIS Alternative B

- Roads Open to Highway Legal Only
- Roads Open to All Vehicles*
- Trails Open to All Vehicles
- Trails Open to Vehicles 50" or Less in Width
- Trails Open to Motorcycle Only
- Special Designation Rock Crawler
- Other Public Roads
- Seasonal Designation
- Motorized Trail Access

SDOHVC Requests comment 548

- Trailheads 9 of them
- FS Roads Open to All Vehicles
- FS Roads Open to Highway-Legal Vehicles Only
- Trails Open to All Vehicles
- Trails Open to Vehicles 50 inches or Less in Width
- Trails Open to Motorcycles Only
- Special Designation (Rock Crawlers)

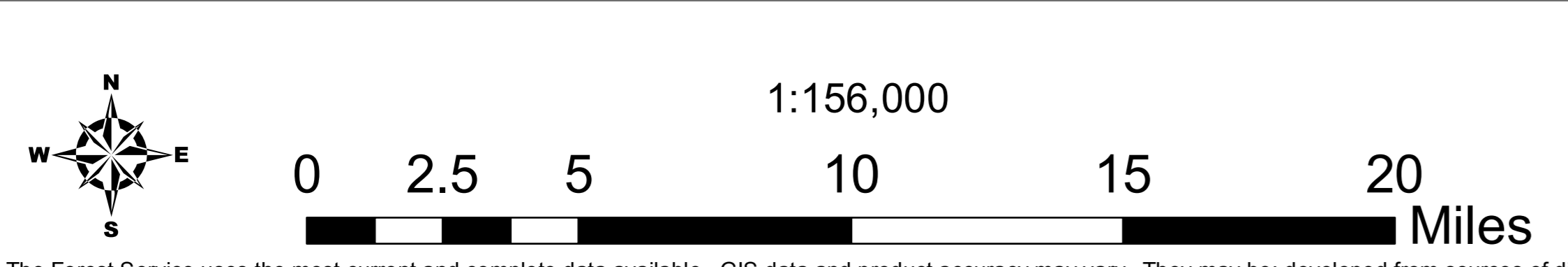
SDOHVC crosscountry areas

- 2 of them, southeast and northcentral

- ForestBoundary
- Non-NFS Ownership

* Roads enrolled in the Wyoming ORV Program require vehicles to display either a state license plate or the Wyoming ORV Permit.

Proposed Travel Designation	Total Miles () = Seasonal Miles				
	Alternative A	Alternative B	Alternative C	Alternative D	Alternative E
Road Miles	3740 (668)	3466 (837)	3582 (992)	2877 (626)	3740 (668)
Trail Miles	36 (24)	663 (338)	771 (370)	320 (141)	36 (24)
TOTAL MILES	3776 (692)	4129 (1175)	4353 (1362)	3197 (767)	3776 (692)
Roads Highway Legal	3580 (656)	1240 (249)	704 (70)	2297 (361)	3580 (656)
Roads Open To All	160 (12)	2226 (588)	2878 (922)	580 (265)	160 (12)
Trails Open to All	0	147 (52)	154 (63)	112 (45)	0
Trails 50" or Less in Width	36 (24)	414 (272)	460 (269)	181 (93)	36 (24)
Trails Motorcycle Only	0	76 (1)	134 (25)	21 (0)	0
Trails Rock Crawlers	0	25 (13)	22 (13)	6 (3)	0
TOTAL MILES	3776 (692)	4129 (1175)	4353 (1362)	3197 (767)	3776 (692)
Unauthorized Route Miles	4109	0	0	0	0
Motorized Trail Access	7	31	34	23	7
Game Retrieval	864,000 acres	179,000 acres	373,000 acres	0	0
Dispersed Camping	864,000 acres	63,500 acres	184,000 acres	0	0



The Forest Service uses the most current and complete data available. GIS data and product accuracy may vary. They may be developed from sources of differing accuracy, accurate only at certain scales, based on modeling or interpretation, incomplete while being created or revised, etc. Using GIS products for purposes other than those for which they were created, may yield inaccurate or misleading results. The Forest Service reserves the right to correct, update, modify, or replace, GIS products without notification. For more information, contact the Black Hills National Forest.