



U.S. Department
of Transportation
**Federal Aviation
Administration**

ADMINISTRATOR'S FACT BOOK

August 2007

Produced by:
Assistant Administrator for Financial Services

Website:
[http://www.faa.gov/about/office_org/headquarters_offices/aba/
admin_factbook/](http://www.faa.gov/about/office_org/headquarters_offices/aba/admin_factbook/)

FAA MISSION

*To provide the safest, most efficient
aerospace system in the world.*

FAA VISION

*We continue to improve the safety and
efficiency of flight. We are responsive
to our customers. We are accountable
to the public.*

Table of Contents

FAA Vision and Mission Inside Front Cover
FAA Values Inside Back Cover

Safety

Aviation Accidents by Type of Operation.....	3*
Aviation Accident Rates by Type of Operation.....	4*
Airspace Incidents by Incident Type.....	5*
Airspace Incident Rates by Incident Type.....	6*
NTSB U.S. Transportation Fatalities.....	7

FAA Air Traffic

FAA Air Traffic Activity.....	8*
Air Route Traffic Control Center Activity.....	9*
50 Busiest FAA Air Traffic Control Towers.....	10*
50 Busiest Radar Approach Control Facilities.....	12*
Automated Flight Service Stations Activity.....	14*

Airports

Number of U.S. Airports.....	16
National Airspace Total System Delays.....	17*

Aircraft

U.S. Air Carrier Activity.....	18
U.S. General Aviation and Air Taxi Activity.....	19
Aircraft Certification Service.....	20

Industry Trends

Scheduled U.S. Air Carrier Traffic & Fin. Trends.....	21*
Aviation Forecasts.....	22*

Commercial Space Transportation

AST Licensed Activity.....	23
U.S. Commercial Space Launch Schedule.....	24

Airmen

Active Pilots and Nonpilots.....	25*
FAA Organizational Chart.....	Center Fold

Table of Contents (cont.)

FAA Regional Boundaries Map	28
FAA Resources	
FAA Employment	29*
FAA Percent Minority and Female Employment	30*
FAA Major Work Force Employment	31
Labor Relations	32*
FAA Finances	33
FAA NAS Operational Facilities	34
Organization	
FAA Officials—Washington Headquarters	35*
FAA Officials—Major Field Organizations	38*
FAA Officials—International Area Offices	40*
FAA Flight Plan 2007-2011	41

For further information call ABA-1 (202-267-9105)

*Updated this issue

Distribution: A-WXYZE-3; A-FOF-O(STD)

Aviation Accidents by Type of Operation

Type of Operation	Year	Jan	Feb	Mar	Apr	May	Jun	Jul	Aug	Sep	Oct	Nov	Dec	Year Total
Large Air Carrier	2006	1	2	2	5	3	5	4	1	4	1	3	2	33
	2007	0	2	2	5	1	3	0	0	0	0	0	0	13
Commuter	2006	0	0	1	0	0	1	0	0	0	0	0	1	3
	2007	1	0	0	0	0	1	0	0	0	0	0	0	2
Air Taxi	2006	10	2	7	4	7	3	7	4	1	3	0	6	54
	2007	5	4	5	6	5	3	0	0	0	0	0	0	28
General Aviation	2006	88	80	102	146	161	163	179	154	122	117	102	104	1,518
	2007	77	84	119	140	134	107	0	0	0	0	0	0	661
Rotorcraft*	2006	11	11	9	16	28	14	11	19	12	10	13	7	161
	2007	9	10	20	11	12	7	0	0	0	0	0	0	69

* Part 135 and US registered general aviation, and US-public use rotorcraft accidents.

Note: Preliminary data and subject to change.
As of: 07/10/07

Source: AAI-220
(202) 267-3279

Safety

Aviation Accident Rates by Type of Operation

Type of Operation	2003		2004		2005		2006		% Chg 06-05	
	Number	Rate	Number	Rate	Number	Rate	Number	Rate	Number	Rate
Large Air Carriers.....	54	.31	30	.16	40	.21	31	.16	-23%	-23%
Commuter.....	2	0.62	4	1.32	6	2.03	3	1.07	-50%	-47%
Air Taxi.....	73	2.49	66	2.04	66	1.73	54	1.50	-18%	-13%
General Aviation.....	1,740	6.68	1,619	6.49	1,669	7.20	1,515	6.64	-9%	-8%

Accident Rates are per 100,000 Flight Hours. Flight hours, miles and departures are compiled by FAA.
Rotorcraft rates discontinued, currently under review.

Note: 2006 data preliminary.
As of: 06/30/07

Source: NTSB
www.nts.gov/aviation/stats.htm

Airspace Incidents by Incident Type

Incident Type	Year	Jan	Feb	Mar	Apr	May	Jun	Jul	Aug	Sep	Oct	Nov	Dec	Year Total
Near Midair Collisions	2006	9	5	8	14	11	4	8	15	13	10	5	3	105
	2007	6	11	13	4	11	0	0	0	0	0	0	0	45
Pilot Deviations	2006	160	199	214	246	241	211	227	242	275	293	234	178	2,720
	2007	209	180	226	256	289	0	0	0	0	0	0	0	1,160
Operational Errors	2006	95	119	109	106	114	110	115	125	95	126	112	79	1,305
	2007	82	93	123	130	118	0	0	0	0	0	0	0	546
Vehicle Pedestrian Deviations	2006	13	11	27	21	21	23	18	27	21	20	15	20	237
	2007	25	21	21	21	25	0	0	0	0	0	0	0	113
Surface Incidents	2006	61	68	92	80	79	84	93	94	109	91	71	69	991
	2007	70	78	87	99	97	0	0	0	0	0	0	0	431
Runway Incursions*	2006	21	25	26	25	29	32	35	33	25	0	0	0	251
	2007	21	27	31	35	33	39		0	0	0	0	0	186

Note: Preliminary data and subject to change.

Source: ATO-A (IT)
 (202) 385-4802
 *ATO-S
 (202) 385-4788

As of: 06/13/07
 *As of: 07/17/07

5

Airspace Incident Rates by Incident Type

Incident Type	2003		2004		2005		2006		Percent Change	
									2005 - 2006 (4)	
	Number	Rate	Number	Rate	Number	Rate	Number	Rate	Number	Rate
Operational Errors (1).....	1,211	.79	1,214	.77	1,496	.95	1,305	.85	-13%	-11%
Pilot Deviations (2).....	2,679	1.63	2,621	1.59	2,247	1.36	2,720	1.65	21%	21%
Surface Incidents (3).....	921	1.47	870	1.38	945	1.51	991	1.62	5%	7%

(1) Per 100,000 Facility Activities

(2) Per 100,000 Flight Hours

(3) Per 1,000,000 Airport Operations

(4) Calculations use fifteen decimal places for rates (rounded two places for display).

Note: Data preliminary and subject to change.

Source: ATO-A (IT)

(202) 385-4802

As of: 06/13/07

**National Transportation Safety Board
2004-2005 U.S. Transportation Fatalities**

	2004	2005 ¹
Highway		
Passenger cars.....	19,192	18,440
Light Trucks and Vans.....	12,674	12,975
Pedestrians.....	4,675	4,881
Motorcycles.....	4,028	4,553
Pedalcycles ²	727	784
Medium and heavy trucks.....	766	803
Buses.....	42	58
All Other ³	732	949
Total.....	42,836	43,443
Grade Crossings⁴	369	356
Rail		
Intercity ⁵		
Trespassers and nontrespassers..... ⁶	584	555
Employees and contractors.....	29	29
Passengers on trains.....	3	16
Light, heavy, and commuter rail ⁷	200	189
Total.....	816	789
Marine		
Recreational Boating.....	676	697
Cargo Transport.....	26	12
Commercial fishing..... ⁸	42	41
Commercial Passengers.....	21	19
Total.....	765	769
Aviation		
General Aviation.....	558	562
Airlines.....	14	22
Air Taxi.....	64	18
Commuter.....	0	0
Foreign/Unregistered..... ⁹	16	14
Total.....	652	616
Pipeline		
Gas..... ³	18	17
Liquids.....	5	2
Total.....	23	19
GRAND TOTAL.....	45,092	45,636

¹ Numbers for 2005 are preliminary estimates. Aviation data from NTSB; marine data from Department of Homeland Security; all other data from DOT. ² Includes bicycles or other cycles. ³ Includes vehicle occupant fatalities in other vehicle types, ex. farm or construction equipment. ⁴ Grade crossing fatalities are not counted as a separate category for determining the grand totals because they are included in the highway and rail categories, as appropriate. ⁵ Data reported to Federal Rail Administration (FRA). ⁶ Includes persons on railroad property with and without permission. Does not include motor vehicle occupants killed at grade crossings. ⁷ Data reported to the FTA. Fatalities for commuter rail operations may also be reported to the FRA and may be included in the intercity railroad fatalities. ⁸ Refers to only operational fatalities. ⁹ Includes non-U.S. registered aircraft involved in accidents in the U.S.

Air Traffic

FAA Air Traffic Activity (In Thousands)

Aircraft Handled by	Jan-May 2007*	Jan-May 2006	Jan-Dec 2006
FAA ARTCC's			
Air Carrier.....	10,339	10,045	24,486
Air Taxi.....	3,984	3,805	9,437
General Aviation.....	3,420	3,390	8,255
Military.....	1,600	1,818	4,122
TOTAL.....	19,343	19,058	46,300
Airport Operations			
Logged by FAA Towers			
Air Carrier.....	5,495	5,345	13,132
Air Taxi.....	4,079	4,153	10,138
General Aviation.....	7,771	8,016	19,714
Military.....	678	699	1,679
TOTAL.....	18,023	18,213	44,663
Instrument Operations			
Logged by FAA Towers			
Air Carrier.....	5,907	5,740	14,108
Air Taxi.....	4,828	4,916	11,948
General Aviation.....	6,573	6,826	17,095
Military.....	1,049	1,140	2,642
TOTAL.....	18,357	18,622	45,793
Flight Services			
Logged by: **			
Flight Service Stations.....	369	369	852
Automated Flight Service Stations.....	6,106	9,849	19,744
TOTAL.....	6,475	10,218	20,596

*Preliminary
As of: 07/15/07

**As of: 06/10/07

Source: APO-130
(202) 267-3350

ATO-A/AJA
(202) 385-4734

Air Route Traffic Control Center Activity

CY 2006 Rank	Center	Aircraft Handled (000's)		
		Jan-May 2007*	Jan-May 2006	Jan-Dec 2006
1	Atlanta, GA.....	1,328	1,301	3,135
2	New York, NY.....	1,272	1,214	2,970
3	Leesburg, VA.....	1,227	1,203	2,907
4	Cleveland, OH.....	1,148	1,163	2,879
5	Chicago, IL.....	1,150	1,151	2,845
6	Indianapolis, IN.....	1,098	1,102	2,694
7	Jacksonville, FL.....	1,147	1,105	2,557
8	Miami, FL.....	1,159	1,143	2,507
9	Los Angeles, CA.....	983	961	2,316
10	Memphis, TN.....	948	940	2,288
11	Fort Worth, TX.....	892	889	2,160
12	Houston, TX.....	935	895	2,144
13	Minneapolis, MN.....	818	820	2,073
14	Kansas City, KS.....	832	834	2,050
15	Denver, CO.....	764	752	1,865
16	Nashua, NH.....	751	712	1,856
17	Albuquerque, NM.....	730	722	1,730
18	Oakland, CA.....	694	707	1,696
19	Salt Lake City, UT.....	610	602	1,505
20	Seattle, WA.....	529	518	1,301
21	Anchorage, AK.....	223	219	578
22	Guam **.....	103	103	242

*Preliminary

**Center Radar Approach Control (CERAP)

Source: APO-130
(202) 267-3350

As of: 06/30/07

50 Busiest FAA Airport Traffic Control Towers

CY 2006 Rank	Tower and State	Airport Operations (000's)		
		Jan-May 2007*	Jan-May 2006	Jan-Dec 2006
1	Hartsfield-Jackson Atl Intl, GA.....	398	392	976
2	Chicago/O'Hare Int'l, IL.....	384	395	959
3	Dallas/Ft. Worth Int'l, TX.....	282	289	703
4	Los Angeles Int'l, CA.....	273	267	657
5	Las Vegas/McCarran Int'l, NV.....	256	257	619
6	Denver International, CO.....	253	243	610
7	Houston/G Bush Intercont'l, TX.....	251	246	603
8	Phoenix Sky Harbor Int'l, AZ.....	229	229	547
9	Philadelphia Int'l, PA.....	207	212	516
10	Charlotte/Douglas Int'l, NC.....	217	209	511
11	Detroit Metro Wayne Co., MI.....	196	199	482
12	Minneapolis-St. Paul Int'l, MN.....	189	197	476
13	Newark International, NJ.....	183	183	449
14	Washington Dulles Int'l, VA.....	180	172	424
15	Salt Lake City Int'l, UT.....	174	171	419
16	Boston/Logan Int'l, MA.....	164	164	416
17	Phoenix-Deer Valley, AZ.....	174	178	407
18	La Guardia, NY.....	166	168	406
19	John F. Kennedy Int'l, NY.....	184	147	397
20	Van Nuys, CA.....	153	160	395
21	Memphis International, TN.....	157	161	388
22	Miami International, FL.....	167	168	387
23	Long Beach/Daughtery, CA.....	174	144	369
24	Santa Ana/John Wayne, CA.....	145	152	363
25	San Francisco Int'l, CA.....	149	145	359

*Preliminary

Source: APO-130
(202) 267-3350

As of: 06/30/07

50 Busiest FAA Airport Traffic Control Towers

CY 2006 Rank	Tower and State	Airport Operations (000's)		
		Jan-May 2007*	Jan-May 2006	Jan-Dec 2006
26	Orlando International, FL.....	154	155	356
27	Covington/Cincinnati Int'l, KY.....	136	144	346
28	Seattle Tacoma Int'l, WA.....	137	133	340
29	Metropolitan Oakland Int'l, CA.....	144	130	336
30	Denver/Centennial, CO.....	136	132	320
31	Orlando/Sanford, FL.....	138	134	319
32	Honolulu International, HI.....	130	126	317
33	Baltimore/Wash. Int'l, MD.....	122	123	308
34	Anchorage International, AK.....	106	108	303
35	Seattle/Boeing Field, WA.....	124	117	300
36	Chicago Midway, IL.....	125	119	299
37	Fort Lauderdale/Hollywood, FL.....	137	135	297
38	Daytona Beach Int'l, FL.....	130	119	282
39	Lambert-St. Louis Int'l, MO.....	106	119	282
40	Washington National, DC.....	115	115	278
41	San Diego/Gillespie Field, CA.....	121	111	278
42	Tomball D W Hooks, TX.....	92	98	272
43	Tucson International, AZ.....	114	119	270
44	Portland International, OR.....	107	104	260
45	Tampa International, FL.....	114	111	257
46	Cleveland Hopkins Int'l, OH.....	100	102	249
47	Mesa/Falcon Field, AZ.....	127	120	249
48	Dallas Love Field, TX.....	102	101	248
49	Raleigh-Durham Int'l, NC.....	103	100	245
50	Houston Hobby, TX.....	100	99	237

50 Busiest Radar Approach Control Facilities

CY 2006 Rank	Facilities/State	Instrument Ops (000s)		
		Jan-May 2007*	Jan-May 2006	Jan-Dec 2006
1	Southern Calif. TRACON, CA.....	899	863	2,142
2	New York TRACON, NY.....	822	814	2,091
3	Potomac TRACON, DC.....	705	695	1,715
4	Northern Calif. TRACON, CA.....	654	641	1,578
5	Atlanta TRACON, GA.....	588	575	1,425
6	Chicago TRACON, IL.....	559	575	1,417
7	Dallas/Ft Worth, TRACON, TX.....	488	501	1,220
8	Houston TRACON, TX.....	395	396	954
9	Miami International, FL.....	414	405	914
10	Denver TRACON, CO.....	333	323	803
11	Phoenix TRACON, AZ.....	306	304	718
12	Las Vegas TRACON, NV.....	293	296	718
13	Philadelphia International, PA.....	284	290	713
14	Boston TRACON, MA.....	272	275	711
15	Orlando International, FL.....	320	294	704
16	Detroit TRACON, MI.....	261	267	660
17	Charlotte/Douglas Int'l, NC.....	268	259	632
18	San Juan CERAP, PR.....	276	280	618
19	Minneapolis TRACON, MN.....	240	249	609
20	Honolulu Control Facility, HI.....	235	223	558
21	Tampa International, FL.....	243	248	550
22	Seattle/Tacoma TRACON, WA.....	205	204	521
23	Salt Lake City TRACON, UT.....	208	201	502
24	Covington/Cincinnati Int'l, KY.....	185	196	478
25	Memphis International, TN.....	185	189	458

* Preliminary

Source: APO-130
(202) 267-3350

As of: 06/30/07

50 Busiest Radar Approach Control Facilities

CY 2006 Rank	Facilities/State	Instrument Ops (000's)		
		Jan-May 2007*	Jan-May 2006	Jan-Dec 2006
26	St Louis TRACON, MO.....	166	183	442
27	Jacksonville Int'l, FL.....	183	187	419
28	Daytona Beach Int'l, FL.....	152	197	404
29	Port Columbus Int'l, OH.....	133	154	380
30	San Antonio Int'l, TX.....	148	154	377
31	Palm Beach International, FL.....	171	173	356
32	Cleveland Hopkins Int'l, OH.....	136	14	353
33	Corpus Christi, TX.....	135	147	345
34	Portland TRACON, OR.....	132	131	330
35	Indianapolis International, IN.....	126	137	328
36	Pittsburgh International, PA.....	135	133	328
37	Dayton International, OH.....	111	136	326
38	Austin, TX.....	129	124	323
39	Raleigh-Durham Int'l, NC.....	132	129	318
40	Anchorage TRACON, AK.....	118	119	317
41	Milwaukee/Gen Mitchell Int'l, WI.....	117	118	299
42	Tucson TRACON, AZ.....	124	123	298
43	Nashville International, TN.....	124	121	297
44	Pensacola TRACON, FL.....	130	126	293
45	Norfolk International, VA.....	114	118	291
46	Kansas City International, MO.....	120	115	288
47	Wichita Mid Continent, KS.....	102	106	269
48	Louisville Int'l/Standiford, KY.....	103	106	266
49	Albuquerque Int'l, NM.....	101	106	253
50	Yankee TRACON, CT.....	104	95	250

Automated Flight Service Stations Activity

CY 2006 Rank	AFSS/State	Flight Services (000's)		
		Jan-May 2007*	Jan-May 2006	Jan-Dec 2006
1	St Petersburg, FL**	405	426	975
2	Miami AIFSS, FL	381	377	821
3	Leesburg, VA**	188	264	671
4	Fort Worth Hub, TX**	157	263	652
5	Lansing, MI**	91	261	641
6	Prescott Hub, AZ**	188	248	603
7	Princeton, MN	194	252	592
8	Seattle, WA	192	208	574
9	Kankakee, IL**	148	210	556
10	Raleigh, NC**	173	197	514
11	Albuquerque, NM**	192	214	512
12	Nashville, TN**	85	212	509
13	Conroe, TX***	0	217	507
14	Macon, GA**	129	204	473
15	Denver, CO**	142	170	452
16	Bridgeport, CT	115	166	449
17	Columbia, MO**	153	159	430
18	Green Bay, WI***	0	140	423
19	Kenai, AK	132	140	414
20	Williamsport, PA	153	135	380
21	Oakland, CA**	87	137	344
22	Anderson, SC	124	163	344
23	McAlester, OK***	0	143	341
24	New York, NY	138	123	340
25	Buffalo, NY***	0	101	303
26	Cedar City, UT	103	126	301
27	Jonesboro, AR***	0	127	300
28	Terre Haute, IN***	0	100	285
29	San Diego, CA**	116	128	277
30	Cleveland, OH	90	103	275

* Preliminary

**Closed Reopen(ed)(ing)

***Closed

Automated International Flight Service Station--AIFSS

As of: 06/10/07

Source: ATX-400
(202) 385-4734

Automated Flight Service Stations Activity

CY 2006 Rank	AFSS/State	Flight Services (000's)		
		Jan-Apr 2007*	Jan-Apr 2006	Jan-Dec 2006
31	Altoona, PA***	0	116	272
32	San Angelo, TX	72	137	259
33	Reno, NV***	0	104	247
34	Dayton, OH***	0	85	242
35	Gainesville, FL	110	111	239
36	Honolulu, HI	78	108	238
37	Anniston, AL***	0	119	222
38	McMinnville, OR	93	70	220
39	Louisville, KY	90	81	216
40	Burlington, VT***	0	74	212
41	Wichita, KS	86	86	211
42	De Ridder, LA	78	96	204
43	Rancho Murieta, CA	69	102	200
44	Bangor, ME	72	85	199
45	Hawthorne, CA***	0	95	199
46	San Juan, PR IAFSS	92	81	194
47	St. Louis, MO	59	92	189
48	Fort Dodge, IA	62	67	175
49	Great Falls, MT***	0	62	164
50	Riverside, CA***	0	67	157
51	Huron, SD	41	67	153
52	Fairbanks, AK	48	48	151
53	Jackson, TN***	0	60	132
54	Elkins, WV	45	61	130
55	Juneau, AK	35	40	125
56	Casper, WY	28	53	125
57	Boise, ID	41	46	123
58	Grand Forks, ND	60	26	113
59	Columbus, NE	23	42	93
60	Greenwood, MS	20	47	81

Airports

Number of U.S. Airports ¹ (As of December 31)

	2006	2005	2004
Total Airports	19,983	19,854	19,820
Public Use Airports	5,233	5,270	5,288
# with Paved Runways.....	3,940	3,942	3,941
# with Unpaved Runways....	1,293	1,328	1,347
# with Lighted Runways.....	4,038	4,045	4,037
# with Unlighted Runways...	1,195	1,225	1,251
Private Use Airports	14,757 ^r	14,584	14,532
# with Paved Runways.....	4,911	4,836	4,771
# with Unpaved Runways...	9,846	9,748	9,761
# with Lighted Runways.....	1,406	1,346	1,301
# with Unlighted Runways..	13,351	13,238	13,231
Public use airports abandoned ...	27	14	10
Private use airports abandoned ..	133	115	117
Certificated Airports*	604	575	599

¹ Includes civil and joint-use civil-military airports, heliports, STOLports, and seaplane bases in the U.S. and its territories.

* Certificated airports serve Air Carrier Operations with aircraft seating more than 9 passengers seats. (FAR Part 139).
r revised

As of: 03/15/07

Source: AAS-330
(202) 267-8752

National Airspace Total System Delays

Year	Jan	Feb	Mar	Apr	May	Jun	Jul	Aug	Sep	Oct	Nov	Dec	YTD Total
2007*	32,927	30,071	39,558	39,340	44,055								185,951
2006	29,463	24,705	37,218	35,132	40,669	48,096	47,606	46,547	48,092	51,053	43,482	39,797	491,860
2005	32,121	30,176	34,633	25,887	30,920	48,922	58,471	45,328	32,949	34,221	34,273	29,766	437,667
2004	28,104	32,274	34,001	32,459	50,800	52,121	46,894	43,770	30,412	37,271	35,234	32,446	455,786
2003	16,159	18,260	25,387	17,474	26,544	27,413	32,833	37,066	28,882	21,422	34,116	31,332	316,888

Delays of 15 minutes or longer

* Preliminary information that is subjected to change

As of: 06/01/07

Source: ATT-220
(703) 904-4470

Aircraft

U.S. Air Carrier Activity

	CY 2006	CY 2005	CY 2004
Type of Carrier			
Domestic, flag, supplemental, and cargo air carriers.....	7,516	7,668	7,720
Commuter Air Carriers and Air Taxis.....	11,554	11,571	11,662
Total Number of Aircraft¹.....	19,070	19,239	19,382
Type of Aircraft			
Jet.....	9,939	9,880	9,673
Turboprop.....	2,870	2,994	3,179
Piston.....	3,583	3,745	3,949
Rotary Wing.....	2,678	2,620	2,581
Air Carrier Traffic Statistics²			
(Millions)³			
Passenger miles flown.....	809,728	795,038	752,358
Passenger enplanements.....	750	747	714
Ton miles.....	120,587	118,743	113,194
Aircraft miles flown.....	8,211	8,239	8,006
Passenger load factor ³			
Domestic.....	79.2%	77.2%	74.4%
International.....	79.5%	79.2%	79.1%

¹ Source: Vital Information System

² Includes domestic and international scheduled and non-scheduled service, domestic, flag, supplemental, cargo air carriers and commuters

³ Proportion of aircraft seating capacity that is sold.

As of: 3/15/07

Source: AFS-40
(202) 385-4514
*BTS (K-25)
(202) 366-8513

**U.S. General Aviation
and Air Taxi Activity
(Calendar Years)**

	Estimated Active Aircraft (thousands)		Estimated Hours Flown (Millions)	
	2005	2004	2005	2004
Total	224.4	219.4	27.0	28.1
By Type Aircraft				
Piston.....	167.6	165.2	16.4	18.1
Turboprop.....	7.9	8.4	2.1	2.2
Jet.....	9.8	9.3	3.8	3.7
Rotary Wing.....	8.7	7.8	3.1	2.5
Experimental.....	23.6	22.8	1.3	1.3
Light Sport.....	0.2	n/a	0.0	n/a
Other.....	6.5	5.9	0.3	0.2
By Type Flying				
Corporate.....	10.6	10.2	3.1	2.8
Business.....	25.5	24.2	3.2	3.2
Personal.....	151.4	149.7	9.3	10.2
Instructional.....	13.4	13.1	3.6	4.0
Aerial Application.....	3.5	3.2	1.0	1.1
Aerial Observation.....	4.7	4.8	1.3	1.5
Aerial Other.....	0.8	0.8	0.1	0.1
External Load.....	0.2	0.2	0.1	0.1
Other Work.....	1.7	0.9	0.2	0.3
Sightseeing.....	0.9	1.1	0.2	0.2
Air Tours.....	0.6	0.4	0.4	0.2
Air Taxi.....	6.9	6.2	2.9	2.5
Air Medical Services...	1.4	1.6	0.7	0.6

As of: 11/03/06

AAI-220
(202) 267-8659

**Aircraft Certification Service
Aircraft Certification Mission and
Program Files**

	FY 2005	FY 2004
Type Certificates/Supplemental Type Certificates Issued.....	967	984
Other Design Approvals Issued.....	12,126	14,146
Production Approvals (Including Amendments) Issued.....	2,547	2,582
Airworthiness Certificates Issued.....	957	831
New Airworthiness Directives (AD) Issued.....	496	417
New Designees (Representative of the Administrator)		
Appointed.....	747	792
Total Active Designees.....	4,634	4,761

As of: 03/15/06

Industry Trends

Scheduled U.S. Air Carrier Traffic* and Financial** Trends (In Billions)

	FY 2006	FY 2005	Numerical Change	Percent Change
TRAFFIC				
ASM'S				
Majors.....	927.30	923.91	3.39	0.4
Nationals.....	63.63	75.04	(11.41)	(15.2)
Regionals.....	10.55	4.68	5.87	125.4
Totals.....	1001.48	1003.63	(2.15)	(0.2)
RPM's				
Majors.....	735.79	717.13	18.66	2.6
Nationals.....	48.37	54.50	(6.13)	(11.2)
Regionals.....	6.75	2.51	4.24	168.9
Totals.....	790.91	774.14	16.77	2.2
Load Factor (in percent)				
Majors.....	79.3%	77.6%	1.7	
Nationals.....	76.0%	72.6%	3.4	
Regionals.....	64.0%	53.6%	10.3	
Totals.....	79.0%	77.1%	1.8	
FINANCIAL				
Revenues				
Majors.....	148.41	132.42	15.99	12.1
Nationals.....	13.22	13.47	(0.25)	(1.9)
Regionals.....	0.77	0.74	0.03	4.1
Totals.....	162.40	146.63	15.77	10.8
Expenses				
Majors.....	143.36	132.85	10.51	7.9
Nationals.....	12.71	14.24	(1.53)	(10.7)
Regionals.....	0.75	0.73	0.02	2.7
Totals.....	156.82	147.82	9.00	6.1
Operating Profit/Loss				
Majors.....	\$5.04	(\$0.43)	\$5.48	
Nationals.....	\$0.50	(\$0.77)	\$1.28	
Regionals.....	\$0.02	\$0.02	\$0.01	
Totals.....	\$5.56	(\$1.18)	\$6.77	

*Effective FY 2003, small certificated and commuter air carriers with aircraft size less than 60 seats are required to report traffic on DOT Form 41 instead of DOT Form 298C. As a result, traffic statistics for these carriers are now included in this report. Financial results for these carriers continue to be reported on Form 298C and are excluded from this report.

**Effective FY 2003, Comair, Atlantic Coast Airlines, SkyWest Airlines, and ExpressJet started reporting financial results using DOT Form 41. Prior to FY 2003, these carriers reported their financial results using DOT Form 298C and were not included in this report.

Source: APO-110

As of: 07/19/07

21

(202) 493-4236

Aviation Forecasts

Estimated Forecast
FY 2005 FY 2009

FAA FACILITY WORKLOAD

Aircraft Handled by FAA ARTCC's (Millions)		
Air Carrier.....	24.4	27.5
Air Taxi/Commuter.....	9.4	10.0
General Aviation.....	8.2	9.4
Military.....	4.1	4.1
Total.....	46.1	51.0
Operations Logged by FAA/Contract Towers (Millions)		
Airport.....	61.1	66.8
Instrument.....	45.8	49.9

CIVIL AVIATION ACTIVITY

Certificated Route Air Carrier		
Revenue Passenger Enplanements (Millions).....	584.4	670.4
Revenue Passenger Miles (Billions).....	720.7	841.6
Air Carrier Aircraft.....	4,883	5,440
General Aviation Estimated		
Hours Flown (Millions)*.....	27.5	32.0
Active Aircraft (Thousands)*.....	226.4	242.8

ESTIMATED FUEL CONSUMED BY U.S. DOMESTIC

CIVIL AVIATION (Millions of Gallons)		
Jet Fuel		
Air Carrier.....	20,601	24,069
General Aviation.....	1,289	1,886
Aviation Gas		
Air Carrier.....	2	2
General Aviation.....	262	286
Active Pilots (Thousands)*.....	597,109	592,816

*Calendar Year

As of: 07/19/07

Source: APO-110
(202) 493-4236

U.S. Commercial Space Transportation FAA Licensed Activity

	CY 2006 (Projected)	CY 2005	CY 2004
Licensed Commercial Launches			
TOTAL	10 to 11	5	14
Number of Orbital Launches	10	5	9
Number of Suborbital Launches	0 to 1	0	5
By Launch Vehicle Type			
Delta Family (Boeing Company)	2	0	0
Atlas Family (Lockheed Martin)	1	1	5
Pegasus (Orbital Sciences Corp.)	1	0	0
Taurus (Orbital Sciences Corp.)	0	0	1
Zenit 3SL (Sea Launch)	5	4	3
Falcon 1 (SpaceX)	1	0	0
SpaceShipOne (Scaled Composites)	0	0	5
other suborbital	0 to 1	0	0
By Launch Site (Federal)			
Cape Canaveral AF Station, FL	2	1	5
Vandenberg AFB, CA	1	0	1
Kwajalein / Marshall Islands	1	0	0
By Launch Site (Commercial)			
Pacific Ocean	5	4	3
Other Commercial	1 to 2	0	0
Mojave Airport, CA	0	0	5

As of: 3/13/06

Source: AST
(202) 267-7989

United States Commercial Space Launch Schedule, CY 2006 (launch dates are subject to change)		
Payload (Operator)/ Description	Launch Company/ Vehicle	Launch Date/ Launch Site (Status)
<i>Echostar 10</i> (U.S.) Communications Satellite	Sea Launch (Boeing Launch Services (BLS)) Zenit 3SL	February 15, 2006 Pacific Ocean Platform (Successful)
<i>Astra 1KR</i> (Luxembourg) Comm. Satellite	Lockheed Martin (International Launch Services) Atlas V	April 2006 Cape Canaveral Air Force Station, FL
<i>JCSat 9</i> (Japan) Comm. Satellite	Sea Launch (BLS) Zenit 3SL	April 2006 Pacific Ocean Platform
<i>GOES-N</i> (U.S.) Remote Sensing Satellite	The Boeing Company (BLS) Delta IV	May 2006 Cape Canaveral Air Force Station, FL
<i>Unannounced</i> (unannounced) Comm. Satellite	Sea Launch (BLS) Zenit 3SL	Summer 2006 Pacific Ocean Platform
<i>WorldView 1</i> (U.S.) Remote Sensing Satellite	The Boeing Company (BLS) Delta II	October 2006 Vandenberg Air Force Base, CA
<i>Unannounced</i> (unannounced) Comm. Satellite	Sea Launch (BLS) Zenit 3SL	Fall 2006 Pacific Ocean Platform
<i>C/NOrFS</i> (U.S.) Science Satellite	Orbital Sciences Pegasus XL	2006 Kwajalein, Marshall Islands
<i>Razaksat</i> (Malaysia) Comm. Satellite	SpaceX Falcon 1	2006 Kwajalein, Marshall Islands
<i>Unannounced</i> (unannounced) Comm. Satellite	Sea Launch (BLS) Zenit 3SL	Fall/Winter 2006 Pacific Ocean Platform

As of: 07/31/06

Source: AST
(202) 267-7989

**Active Pilots and Nonpilots
(As of 31 December)**

	2006		2005	
	Total	Women	Total	Women
Pilot-Total	686,241	36,068	609,325	36,684
Student.....	84,866	9,640	87,213	9,717
Private.....	219,233	14,111	228,619	14,517
Commercial.....	117,610	7,236	120,614	7,315
Airline Transport.....	141,935	5,071	141,992	5,008
Other ¹	21,597	0	30,887	27
Nonpilot-Total ²	656,227	128,192	644,016	119,860
Mechanic.....	323,097	6,345	320,293	6,152
Repairmen.....	40,329	2,180	40,030	2,108
Ground Instructor.....	74,849	5,669	74,378	5,612
Flight Engineer.....	55,952	1,920	57,756	1,986
Flight Attendant ³	134,874	108,559	125,032	100,630
Other ⁴	27,126	3,519	26,527	3,362
Flight Instructor	91,343	6,158	90,555	6,067

¹ Includes helicopter (only), glider (only), and recreational and sport pilot certificates. Include Glider pilots represents pilots who received a medical examination within the last 25 months. Lighter-than-air type ratings are no longer being issued.

² Excludes non-pilots 70 years old or over in all certificate types except flight engineers and flight navigators.

³ Introduced in 2005

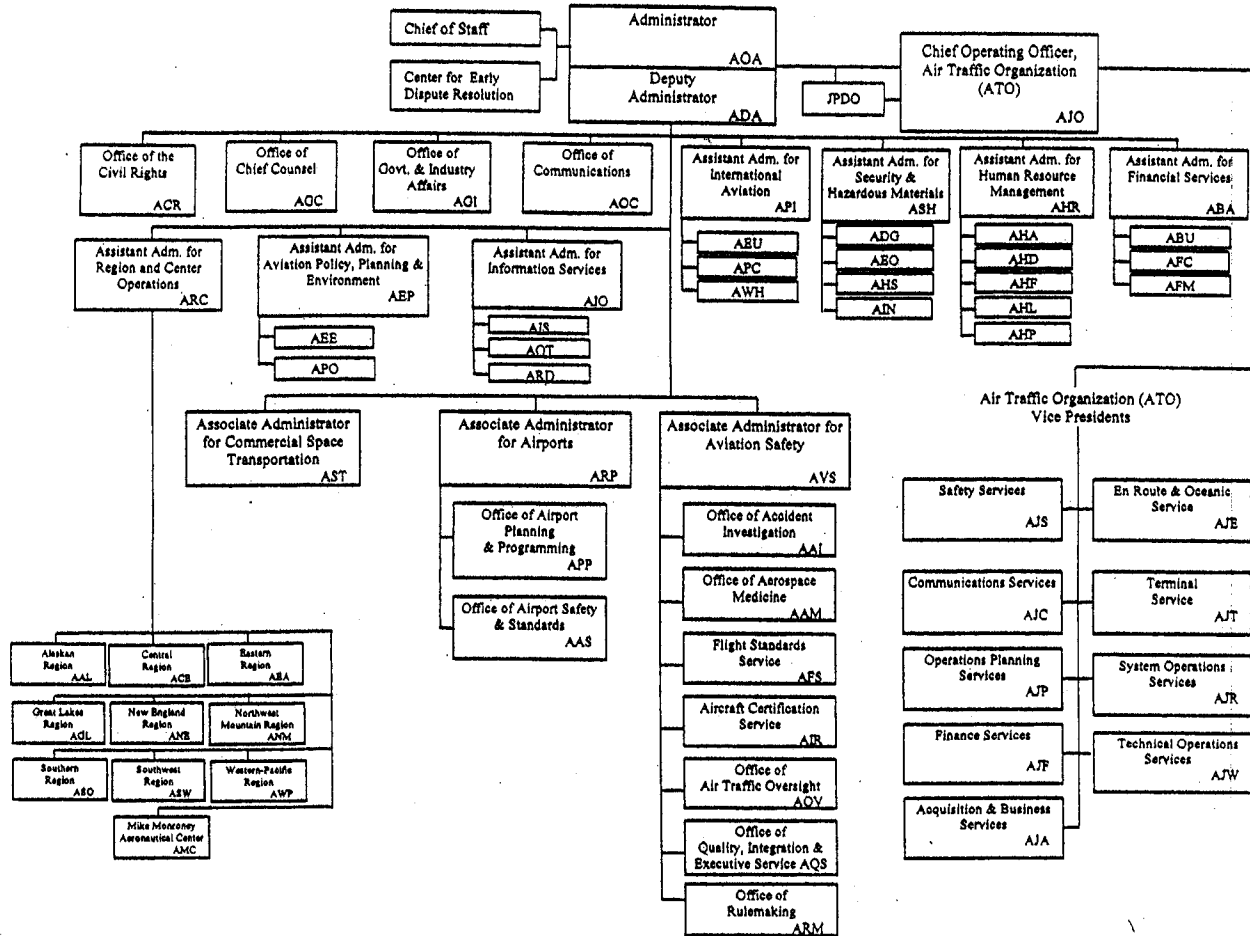
⁴ Includes flight navigators, parachute riggers, and dispatchers.

As of 12/31/06,

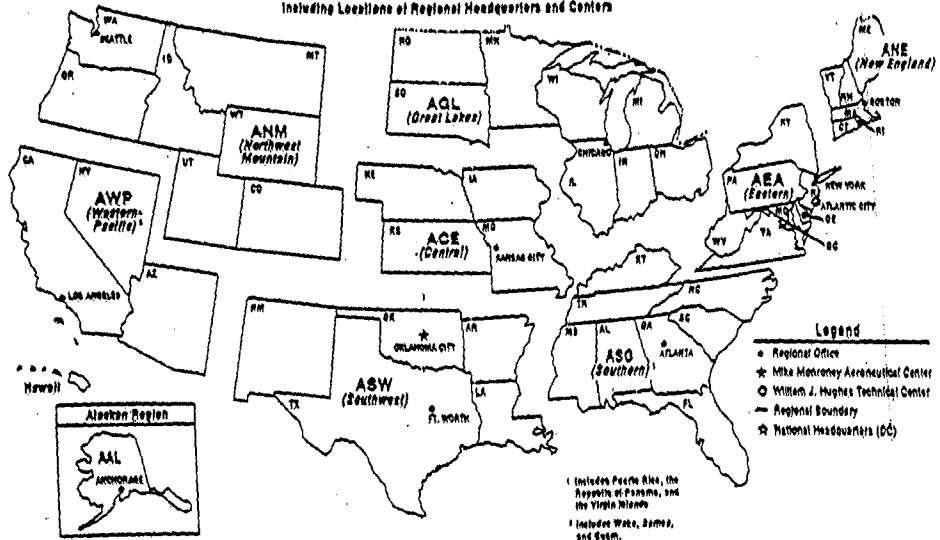
(202) 267-3103

As of January 29, 2007

FEDERAL AVIATION ADMINISTRATION



U. S. DEPARTMENT OF TRANSPORTATION
 Federal Aviation Administration
FAA REGIONAL BOUNDARIES
 Including Locations of Regional Headquarters and Centers



FAA Resources

FAA Employment (Permanent Employees)¹

	FY06	FY05
Line of Business		
Air Traffic Organization (ATO).....	32,734	35,008
Aviation Safety (AVS).....	6,562	6,335
Airports (ARP).....	467	473
Comm. Space Transportation (AST)....	54	54
Staff Offices**.....	3,889	3,860
Total	43,706	45,730
Region/Center/Headquarters (included in above total)		
Aeronautical Center.....	3,196	3,390
Alaskan.....	1,167	1,305
Central.....	1,970	2,277
Eastern.....	4,544	5,074
Great Lakes.....	5,498	6,107
New England.....	1,435	1,785
Northwest Mountain.....	3,814	3,956
Southern.....	6,715	7,092
Southwest.....	4,695	5,076
Western-Pacific.....	4,581	5,091
Washington Headquarters (only) ²	3,096	4,097
Washington Headquarters Field.....	1,994	n/a
Technical Center.....	1,001	1,245

¹ Full time permanent and part time permanent employees only.

² Washington Headquarters employees physically located in Orville/Witbur Wright Buildings and surrounding areas.

** Staff Offices include: ABA; ACR; ADA;AEP; AGC; AGI; AHR; AIO; AOA; AOC; APO; ARC; ASH.

Disclaimer: This is a statistical snapshot of the workforce demographics. The use of this data in any employment decision is PROHIBITED without the express written authorization of the Deputy Chief Counsel for Operations, AGC-3.

As of: 06/30/07

Source: AHP-100
(202) 267-8257

FAA Percent Minority & Female Employment¹

Lines of Business/Region/Center/Headquarters	% Minority		%Female	
	FY06	FY05	FY06	FY05
Air Traffic Organization (ATO)	19.0	18.6	20.0	20.1
Aviation Safety (AVS).....	19.0	19.8	28.0	28.8
Airports (ARP).....	29.0	27.5	39.0	40.8
Commercial Space Transportation (AST).....	43.0	46.3	35.0	31.5
Staff Offices.....	32.0	32.3	54.0	53.2
Total	21.0	20.1	24.0	24.4
Aeronautical Center.....	22.0	21.9	39.0	38.8
Alaskan.....	14.0	13.0	20.0	22.3
Central.....	14.0	14.6	23.0	25.0
Eastern.....	16.0	15.7	18.0	19.4
Great Lakes.....	11.0	11.7	20.0	20.4
New England.....	8.0	7.7	21.0	21.5
Northwest Mountain.....	15.0	12.6	24.0	22.4
Southern.....	23.0	22.0	19.0	19.7
Southwest.....	24.0	23.0	21.0	20.0
Western-Pacific.....	31.0	30.6	20.0	21.4
Washington Headquarters ²	31.0	34.1	40.0	43.6
Technical Center.....	21.0	21.9	32.0	31.9

¹ All FAA employees.

² Washington Headquarters employees physically located in Orville/Wilbur Wright Buildings and surrounding areas.

As of: 06/30/06

Source: AHP-100
(202) 267-8257

Major Work Force Employment

	Employment				
	FY 06	FY05	FY04	%Chg. FY06 - FY05	Actual Change
Controller Work Force*					
Controllers	14,618	14,540	14,934	0.5%	78
Traffic Management Coordinators	613	627	617	-2.2%	-14
Operations Supervisors	1,787	1,801	1,727	-0.8%	-14
Flight Service Stations (FSS)	184	2,087	2,583	-91.2%	-1,903
Field Maintenance					
PASS Technical	6,201	5,954	5,828	4.1%	247
NATCA Engineers	1,081	1,095	1,089	-1.3%	-14
1st Line Supervisors	529	534	536	-0.9%	-5
Airports Work Force	462	466	472	-0.9%	-4
Aircraft Certification	1,180	1,101	1,171	7.2%	79
Flight Standards Work Force	4,867	4,601	4,793	5.8%	266

* Includes all employees in pay status and Academy trainees.
 Note: FSS employment reduction due to A-76 effective 10/04/05.

As of: 03/15/07
 Source: ATO-F, (202) 267-9123
 Source: AQS-400, (202) 267-8990

Labor Relations

	BARGAINING	LABOR	EMPLOYEES
	UNITS	AGREEMENTS	REPRESENTED
Unions.....	46	27	34,092
AFGE.....	10	6	1,615
AFSCME (HQ).....	5	0	1,700
LIUNA.....	1	1	164
NAATS.....	1	1	147
NAGE.....	3	3	309
NATCA (AT).....	4	2	15,503
NATCA (AF).....	2	2	1,373
NATCA (Other).....	8	4	1,377
NFFE.....	3	2	645
PAACE.....	3	2	359
PASS (AF/AEA).....	1	1	7,038
PASS (AVN).....	1	1	340
PASS (AFS).....	2	1	3,376
PASS (AIR).....	1	1	146

AFGE --American Federation of Government Employees
 AFSCME --American Federation of State, County, and Municipal Employees
 LIUNA --Laborer's International Union of North America
 NAATS --National Association of Air Traffic Specialists
 NAGE --National Association of Government Employees
 NACTA --National Air Traffic Controllers Association
 NFFE --National Federation of Federal Employees
 PAACE --Professional Association of Aeronautical Center Employees
 PASS --Professional Airway System Specialists

As of: 07/23/07

Source: AHL-400
(202) 267-3548

FAA Finances
(In Millions of Dollars)

	FY 2006 ¹	FY 2007 ⁴	FY 2008
	Actual	Enacted	Request
Budget Authority (BA)			
Grants-In-Aid (Obligation Lim/Approp).....	3,515	3,515	2,750
Research, Engineering, & Development.....	137	130	140
Facilities and Equipment ²	2,555	2,518	
Operations ²	8,104	8,374	
Safety & Operations ³			1,879
Air Traffic Organization ³			9,308
Total	14,310	14,537	14,077
Obligations Incurred--Operations			
Appropriation by Line of Business			
Air Traffic Organization (ATO).....	6,732	6,740	6,965
Aviation Safety (AVS).....	956	1,003	1,109
Commercial Space Transportation (AST).....	11	12	13
Staff Offices (SO).....	439	619	758
Total	8,138	8,374	8,845
Airport Grant Obligations (NET)			
Primary Airports & Cargo.....	1,007	977	703
States/Territories/Insular/Alaska Supp.....	706	702	626
Carryover Entitlements.....	432	448	448
Discretionary Fund.....	850	809	863
Small Airport Fund.....	430	467	0
Total	3,424	3,402	2,640
Total FAA Outlays	14,245	14,545	15,338
Trust Fund Receipts from Excise Taxes and Interest			
Transportation of Persons by Air.....	7,423	8,033	8,456
Transportation of Property.....	479	609	650
Use of International Air Facilities.....	1,994	1,936	2,093
Aviation Fuel Commercial Use.....	44	503	518
Aviation Fuel (Other Than Gas).....	640	307	338
Aviation Gasoline.....	10	39	40
Total Tax Revenue	10,590	11,426	12,095
Interest revenue.....	495	495	478
Total Tax & Interest Revenue	11,085	11,921	12,573

Numbers may not add due to rounding. ¹ FY06 reflects across-the-board rescission of 1% and hurricane supplemental funding for \$40.6M in Facilities and Equipment per P.L. 109-148.

² Starting in FY 2008, this account will no longer receive appropriations. Funding will go to the new Safety & Operations and ATO accounts.

³ New account starting in FY 2008. Includes both traditional Operations and Facilities & Equipment funds.

ATS/ARA are combined into the new ATO structure.

⁴ Includes Section 111 funding

As of: 03/15/07

Source: ABU-100
(202) 267-5060

FAA NAS Operational Facilities
(As of December 31)

	2006	2005	2004
NAS Operational Facilities¹	40,639	40,847	41,082
Communications.....	14,273	14,344	14,383
Automation.....	3,896	3,900	3,964
Environment.....	6,083	6,122	6,194
Navigation.....	11,033	11,085	11,122
Surveillance.....	1,804	1,848	1,882
Weather.....	3,550	3,548	3,537
Air Traffic Control Facilities²			
Air Route Traffic Control Center.....	21	21	21
Airport Traffic Control Tower.....	517	517	517
Flight Service ³	75	76	76
Flight Service Stations.....	16	16	16
Automated Flight Service Stations...	60	60	60

¹ Excludes non-federal facilities and foreign facilities.

² Included in NAS operational facilities.

³ Flight Service include Flight Service Stations and Automated Flight Service Stations.

As of: 12/31/06

Source: AOP-200
(202) 267-5288

FAA Officials

Washington Headquarters

Routing Symbol	Officials
AOA	Administrator Marion C. Blakey, 202-267-3111 Michael O'Malley, Chief of Staff, 202-267-7416 Louise E. Maillott, Senior Counsel to AOA, 202-267-7417
ADA*	Deputy Administrator Bobby Sturgell, 202-267-8111 Shirley Miller, Acting, Senior Advisor, 202-267-9063
AJO	Chief Operating Officer, Air Traffic Organization Bobby Sturgell, Acting, 202-267-8111
AJA	Acquisition & Business Services Vice President, James H. Washington, 202-267-7222
AJC	Communications Services Vice President, Sandra M. Sanchez, 202-493-5154
AJE	En Route & Oceanic Service Vice President, Richard L. Day, 202-385-8501
AJF	Finance Services Vice President, Eugene D. Juba, 202-267-3022
AJP*	Operations Planning Services Vice President, Victoria Cox, 202-267-7111
AJR	System Operations Services Vice President, Michael A. Cirillo, 202-267-3666
AJS	Safety Services Vice President, Tony Mello, Acting, 202-385-4778
AJT	Terminal Services Vice President, David B. Johnson, 202-385-8801
AJW	Technical Operations Services Vice President, Steven B. Zaidman, 202-267-3366
AJO-3	Joint Planning & Development Office Director, Charles Leader, 202-220-3300
ABA	Assistant Administrator for Financial Services Ramesh K. Punwani, CFO, 202-267-9105 Deputy, John F. Hennigan, 202-267-8928
ABU*	<i>Office of Budget</i> Director, Carol Rose, 202-267-8010
AFC	<i>Office of Financial Controls</i> Director, Carl Burrus, 202-267-7140
AFM	<i>Office of Financial Management</i> Director, Tim Lawler, 202-267-3018
ACR	Assistant Administrator for Civil Rights Fanny Rivera, 202-267-3254 Deputy, Barbara A. Edwards, 202-267-3264
AEP	Asst. Admin. for Aviation Policy, Planning & Environment Dan K. Elwell, 202-267-3927 Deputy, Nancy LoBue, 202-267-7954

* Updated this issue
As of: 07/15/07

Source: ABA-1
(202) 267-9105

FAA Officials

Washington Headquarters--(Cont)

Routing Symbol	Officials
AEE	Office of Environment and Energy Director, Carl Burlison, 202-267-3576
APO	Office of Aviation Policy and Plans Director, Nan Shellabarger, 202-267-3274
AGC*	Chief Counsel Kerry B. Long, 202-267-3222 Deputy Chief Counsel for Policy and Adjudication James W. Whitlow, 202-267-3773 Deputy Chief Counsel for Operations Jerry Melody, Acting, 202-267-3773
AGI	Asst. Administrator for Government & Industry Affairs Megan Rosia, 202-267-3277 Deputy, Chris Brown, 202-267-8211
AHR*	Asst. Administrator for Human Resource Management Ventris C. Gibson, 202-267-3456 Deputy, Joseph N. Miniace, 202-267-3979
AHA	Office of the Accountability Board Executive Director, Maria Fernandez-Greczmiel, 202-267-3065
AHD	Office of Corporate Learning Executive Director, Darlene Freeman, 202-267-9041
AHF*	HR Field Operations Executive Director, Karen Johnson, 847-294-7315
AHL	Office of Labor Management Relations Executive Director, Melvin Harris, 202-267-3979
AHP	Office of Human Resources Management Programs and Policies Executive Director, Sue A. Engelhardt, 202-267-3850
AIO	Assistant Administrator for Information Services David M. Bowen, CIO, 202-493-4570
AIS	Office of Information Systems Security Director, Michael F. Brown, 202-267-7104
AOT*	Office of Information Technology Optimization Director, Vacant, 202-493-4570
ARD	Office of Information Technology Research and Development Chief Technology Officer, Mark T. Powell, 202-385-8150
AES*	Office of Information Technology Enterprise Director, Robert Rovinsky, 202-493-4019
AOC*	Assistant Administrator for Communications Laura Brown, Acting, 202-267-3883 Deputy, External Communications, Laura Brown, 202-267-3883 Deputy, Internal Communications, Gerald Lavey, 202-267-9499
API*	Asst. Administrator for International Aviation James Filippatos, 202-385-8900 Deputy, Di Reimold, 202-385-8900
ARC	Assistant Administrator for Regions/Center Operations Ruth Leverenz, 202-267-7369 Deputy, Paula Lewis, 202-267-7369
ALO	Aviation Logistics Organization Director, John R. Block, 202-267-7369

FAA Officials

Washington Headquarters--(Cont.)

Routing Symbol	Officials
ASH	Lynne A. Osmus, 202-267-7211 Deputy, Claudio Manno, 202-267-7211
ADG	<i>Office of Hazardous Materials</i> Director, William Wilkening, Jr., 202-267-9864
AEO	<i>Office of Emergency Operations and Communications</i> Director, Chris Rocheleau, 202-267-8075
AHS	<i>Office of Operations</i> Director, Thomas D. Ryan, 202-267-7211
AIN	<i>Office of Internal Security and Investigations</i> Director, Bruce Herron, 202-267-7714
ARP	Associate Administrator for Airports D. Kirk Shaffer, 202-267-9471 Deputy, Catherine M. Lang, 202-267-8738
AAS	<i>Office of Airport Safety and Standards</i> Director, David L. Bennett, 202-267-3053
APP	<i>Office of Airport Planning & Programming</i> Director, Benito DeLeon, 202-267-8775
AST	Assoc. Adm. for Commercial Space Transportation Patricia Grace Smith, 202-267-7793 Deputy, Dr. George C. Nield, 202-267-7848
AVS	Associate Administrator for Aviation Safety Nicholas A. Sabatini, 202-267-3131 Deputy, Peggy Gilligan, 202-267-7804
AAI	<i>Office of Accident Investigation</i> Director, Steven B. Wallace, 202-267-9612
AAM	<i>Office of Aviation Medicine</i> Director, Frederick Tilton, MD, 202-267-3535
AFS	<i>Flight Standards Service</i> Director, James Ballough, 202-267-8237
AIR	<i>Aircraft Certification Service</i> Director, John J. Hickey, 202-267-8235
AOV	<i>Office of Air Traffic Oversight</i> Director, Anthony Ferrante, 202-267-5202
AQS	<i>Quality, Integration and Executive Service</i> Director, Vi Lipski, 202-493-5860
ARM	<i>Office of Rulemaking</i> Director, Pamela Hamilton-Powell, 202-267-9677
Duty Officer	(202) 267-3333

FAA Officials

Major Field Organizations

Routing Symbol	Officials
AAL	Alaskan Region, Regional Administrator Bob Lewis, Acting, 907-271-5645 222 West 7th Avenue, Box 14 Anchorage, Alaska 99513-7587 Duty Officer, 907-271-5936
ACE	Central Region, Regional Administrator Christopher Blum, 816-329-3050 901 Locust Kansas City, Missouri 64106 Duty Officer, 816-329-3000
ACT	William J. Hughes Technical Center, Director Wilson N. Felder, Ph.D., 609-485-6641 Atlantic City International Airport New Jersey 08405 Duty Officer, 609-485-6482
AEA	Eastern Region, Regional Administrator Manny Weiss, 718-553-3000 1 Aviation Plaza 159-30 Rockaway Blvd. Jamaica, New York 11434-4809 Duty Officer, 718-553-3100
AGL*	Great Lakes Region, Regional Administrator Stan Sieg, Acting, 847-294-7294 2300 East Devon Avenue Des Plaines, Illinois 60018 Duty Officer, 847-294-8400
AMC	Mike Monroney Aeronautical Center, Director Lindy Ritz, 405-954-4521 6500 South MacArthur Oklahoma City, Oklahoma 73125 Duty Officer, 405-954-3583

FAA Officials

Major Field Organizations--(Cont.)

Routing Symbol	Officials
ANE	New England Region, Regional Administrator Amy Lind Corbett, 781-238-7020 12 New England Executive Park Burlington, Massachusetts 01803 Duty Officer, 781-238-7001
ANM	Northwest Mountain Region, Regional Administrator Dennis Roberts, 425-227-2001 1601 Lind Avenue, S.W. Renton, Washington 98055-4056 Duty Officer, 425-227-2000
ASO	Southern Region, Regional Administrator Doug Murphy, 404-305-5000 1701 Columbia Avenue College Park, Georgia 30337 Duty Officer, 404-305-5180
ASW*	Southwest Region, Regional Administrator Teri Bruner, Acting, 817-222-5001 2601 Meacham Blvd. Ft. Worth, Texas 76137-4298 Duty Officer, 817-222-5006
AWP	Western-Pacific Region, Regional Administrator William C. Withycombe, 310-725-3550 15000 Aviation Boulevard Hawthorne, California 90261 Duty Officer, 310-725-3300

FAA Officials

International Area Offices

Routing Symbol	Officials
AEU	Europe, Africa, & Middle East Area Office, Director Anthony Fazio, 011-322-508-2700 American Embassy, Brussels PSC 82 Box 002 APO AE 09724-1011
AWH	Western Hemisphere Area Office, Director Cecilia Capestany, Acting, 305-716-3300 8600 NW 36th Street Miami, FL 33166
APC*	Asia-Pacific Area Office, Director Christopher Metts, Acting, 011-86-10-8532-1761 American Embassy 27 Napier Road Singapore 258508

**FEDERAL AVIATION ADMINISTRATION
FLIGHT PLAN 2007-2011**

INCREASED SAFETY

Goal: *Achieve the lowest possible accident rate and constantly improve safety.*

Objectives:

1. Reduce the commercial airline fatal accident rate.
2. Reduce the number of fatal accidents in general aviation.
3. Reduce the risk of runway incursions.
4. Ensure the safety of commercial space launches.
5. Enhance the safety of FAA's air traffic systems.

Performance Targets:

Obj. 1 Limit the three-year rolling average fatal accident rate to 0.010 fatal accidents per 100,000 departures.

Obj. 2 By FY 2009, reduce the number of general aviation and nonscheduled Part 135 fatal accidents from the 1996-1998 average of 385 per year to no more than 319 accidents per year.

Obj. 2 By FY 2009, reduce accidents in Alaska for general aviation and all Part 135 operations from the 2000-2002 average of 130 accidents per year to no more than 99 accidents per year.

Obj. 3 By FY 2010, limit Category A and B (most serious) runway incursions to a rate of no more than 0.450 per million operations, and maintain or improve through FY 2011.

Obj. 4 No fatalities, serious injuries, or significant property damage to the uninvolved public during licensed or permitted space launch and reentry activities.

As of 10/01/06

Source: APO-120
(202) 267-3220

INCREASED SAFETY Performance Targets (Continued)

Obj. 5 Limit Category A and B (most serious) operational errors to a rate of no more than 4.27 per million activities through FY 2008.

Obj. 5 By FY 2010, apply Safety Risk Management to at least 19 significant changes in the NAS.

GREATER CAPACITY

Goal: *Work with local governments and airspace users to provide increased capacity in the United States airspace system that reduces congestion and meets projected demand in an environmentally sound manner.*

Objectives:

1. Increase capacity to meet projected demand and reduce congestion.
2. Increase reliability and on-time performance of scheduled carriers.
3. Address environmental issues associated with capacity enhancements.

Performance Targets:

Obj. 1 Achieve an average daily airport capacity for the 35 OEP airports of 104,338 arrivals and departures per day by FY 2011.

Obj. 1 Commission six new runway projects, increasing the annual service volume of the 35 OEP airports by at least 1 percent annually, measured as a five-year moving average, through FY 2011.

Obj. 1 Sustain adjusted operational availability of 99.7% for the reportable facilities that support the 35 OEP airports through FY 2011.

Obj. 1 Achieve an average daily airport capacity for the seven major metropolitan areas of 64,060 arrivals and departures per day by 2009, and maintain through FY 2011.

Obj. 2 Achieve a NAS on-time arrival rate of 88.76 percent at the 35 OEP airports by FY 2011.

Obj. 3 Reduce the number of people exposed to significant noise by 1 percent each year through FY 2011.

Obj. 3 Improve aviation fuel efficiency per revenue plane-mile by 1 percent each year through FY 2011.

INTERNATIONAL LEADERSHIP

Goal: Increase the safety and capacity of the global civil aerospace system in an environmentally sound manner.

Objectives:

1. Promote improved safety and regulatory oversight in cooperation with bilateral, regional, and multilateral aviation partners.
2. Promote seamless operations around the globe in cooperation with bilateral, regional, and multilateral aviation partners.

Performance Targets:

Obj. 1 Work with the Chinese aviation authorities and industry to adopt 27 proven Commercial Aviation Safety Team (CAST) safety enhancements by FY 2011. This supports China's efforts to reduce fatal accidents to a rate of 0.030 fatal accidents per 100,000 departures by FY 2012.

Obj. 1 Conclude at least eight (new or expanded) bilateral safety agreements that will facilitate an increase in the ability to exchange aviation products and services by FY 2011.

Obj. 1 Secure a yearly increase in international aviation development funding to strengthen the global aviation infrastructure. Achieve a 100% increase of the FY 2007 baseline target of \$12 million in \$3 million annual increments for an FY 2011 target of \$24 million.

Obj. 2 By FY 2011, expand the use of Next Generation Air Transportation System (NextGen) performance-based systems to five priority countries.

ORGANIZATIONAL EXCELLENCE

GOAL: Insure the success of the FAA's mission through stronger leadership, a better-trained and safer workforce, enhanced cost-control measures, and improved decision-making based on reliable data.

Objectives:

1. Make the organization more effective with stronger leadership, increased commitment of individual workers to fulfill organization-wide goals, and a better prepared, better trained, safer, diverse workforce.
2. Improve financial management while delivering quality customer service.
3. Make decisions based on reliable data to improve our overall performance and customer satisfaction.
4. Enhance our ability to respond to crises rapidly and effectively, including security-related threats and natural disasters.

Performance Targets:

Obj. 1 Increase the score of the Employee Attitude Survey measure for the areas of management effectiveness and accountability by at least 5 percent, over the FY 2003 baseline of 35 percent by FY 2010.

Obj. 1 By FY 2011, reduce the time it takes to fill mission-critical positions by 7 percent (to 51 days) over the FY 2006 baseline of 55 days.

Obj. 1 Reduce the total workplace injury and illness case rate to no more than 2.44 per 100 employees by the end of FY 2011, representing a cumulative 3 percent annual reduction from the FY 2003 baseline (3.12) set in the Safety, Health and Return to Employment (SHARE) Presidential initiative.

Obj. 1 Reduce grievance processing time by 25 percent by FY 2010, and maintain the reduction through FY 2011.

Obj. 1 Maintain the air traffic control workforce at, or up to 2% above the projected annual totals in the Air Traffic Controller Workforce Plan.

ORGANIZATIONAL EXCELLENCE Performance Targets (Continued)

Obj. 2 Close out 85% of eligible cost reimbursable contracts during each fiscal year.

Obj. 2 Organizations throughout the agency will continue to implement cost efficiency initiatives including, but not limited to: 10-15% savings for strategic sourcing for selected products and services; consolidating facilities and services, such as service areas, real property management, and web service; 3% reduction in help desk operating costs through consolidations; eliminating or reducing obsolete technology; and \$15 million reduction in Information Technology operationg costs.

Obj. 2 Obtain an unqualified opinion on the agency's financial statements (Clean Audit with no material weaknesses) each fiscal year.

Obj. 3 By FY 2008, 90 percent of major system acquisition investments are within 10 percent of annual budget and maintain through FY 2011.

Obj. 3 By FY 2008, 90 percent of major system acquisition investments are on schedule and maintain through FY 2011.

Obj. 3 Increase agency scores on the American Customer Satisfaction Index which surveys commercial pilots.

Obj. 3 Achieve zero cyber security events that disable or significantly degrade FAA services.

FAA VALUES

Safety is our passion.

We're the world leaders in aerospace safety.

Quality is our trademark.

We serve our country, our customers, and each other.

Integrity is our character.

We do the right thing, even when no one is looking.

People are our strength.

We treat people as we want to be treated.