

# Forest Inventory and Analysis (FIA) National Quarterly E-Newsletter



August 2006

Volume 1, Number 3

## In This Issue

- A message to our clients..... 1
- What's going on in the world of research?..... 2
- Studies in progress..... 4
- Upcoming events..... 5
- Summer safety tips..... 6

## 8th Annual Forest Inventory and Analysis Symposium

October 16th - 19th, 2006

**Portola Plaza Hotel**  
Monterey, California, U.S.A.



## *A message to our clients...*

The dual roles of research and service within the FIA program are often discussed, but perhaps not always understood or appreciated. If you've always wondered how research has improved the delivery of FIA please come to the FIA Science Symposium in Monterey, CA the week of October 16<sup>th</sup>. Several sessions will be devoted to new and improved operational applications of FIA that result from applied research both within FIA and with partners. You can obtain the registration information at <http://fia.fs.fed.us/symposium/>. Examples include new online estimation tools, satellite classification of land cover for phase 1 stratification, and FIA supported estimation tools developed and maintained by partners.

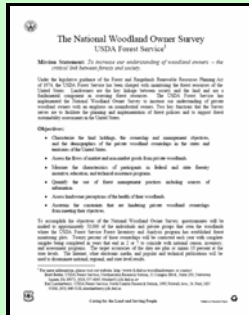
Delivery of FIA data in a timely fashion relies on the use of new operational applications that initially are developed by researchers within FIA and the inventory research community. It's often very easy to see the link between delivering FIA data in a timely fashion with the use of new technology. For example, PNW-FIA completed populating the FIADB in July, seven months after the field season, through the use of the National Information Management System (NIMS) and the use of satellite imagery for phase 1. Converting all FIA units to NIMS and eliminating dependence on legacy systems is obviously a priority. This illustrates that FIA is coming closer to the 6 month window for processing annual data, and that we are on the right track. FIA is currently working on a national phase 1 methodology to improve consistency and timeliness of phase 1 stratification across all states. Efficiencies gained through the consistent and timely application of phase 1 nationally will free up staff to work on the next generation of wall-to-wall map based products (e.g., land cover and use change).

Please take the opportunity provided with this newsletter to learn more about components of the FIA program delivered through the National Woodland Owner Survey, and the newly established Northern Monitoring Program. The final section in our newsletter provides for access to FIA data workshops, where you can learn more about accessing FIA data and applications. As always, be safe out there.



–Greg Reams, National Program Leader

## National Woodland Owner Survey Mission Statement and Objectives



To download a copy please click on the following website  
<http://www.fs.fed.us/woodlandowners/about/index.shtml>

### Contact Us

**Greg Reams**  
National Program Leader  
Forest Inventory & Analysis

USDA Forest Service  
National Office  
1601 North Kent Street, Suite 400  
Arlington, VA 22209

Phone: (703) 605-4189  
Fax: (703) 605-5131  
Email: [greams@fs.fed.us](mailto:greams@fs.fed.us)

**Brad Smith**  
Associate National Program  
Leader  
Forest Inventory & Analysis

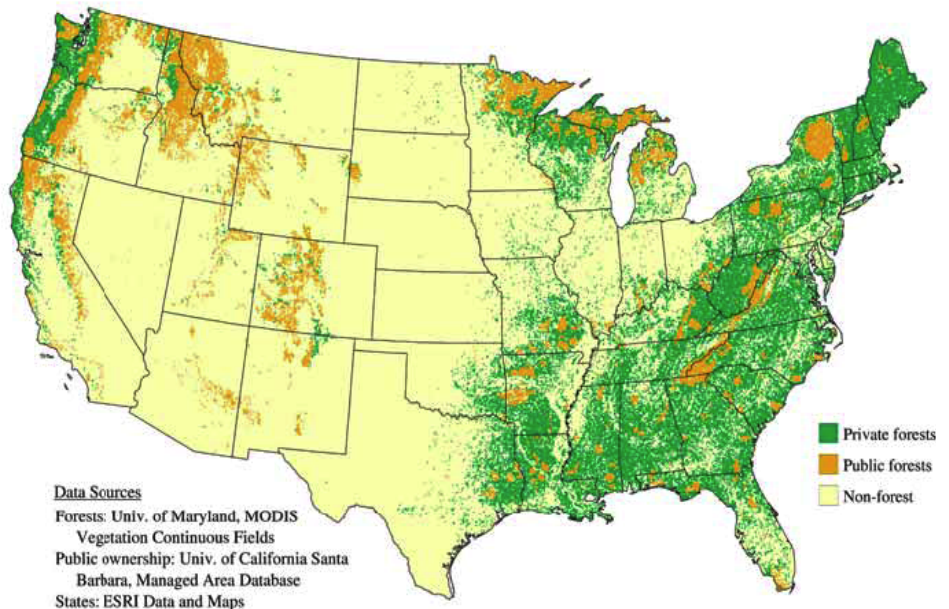
USDA Forest Service  
National Office  
1601 North Kent Street, Suite 400  
Arlington, VA 22209

Phone: (703) 605-4190  
Fax: (703) 605-5131  
Email: [bsmith12@fs.fed.us](mailto:bsmith12@fs.fed.us)

## What's going on in the world of research?

### National Woodland Owner Survey

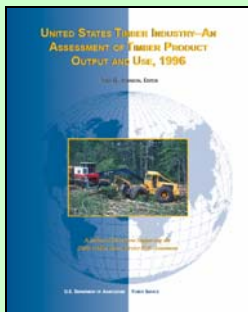
**Accomplishment:** The National Woodland Owner Survey (NWOS) is the nation's census of forest owners. It is the social compliment to our FIA biological resource inventory. On an annual basis, we contact approximately 7,500 private forest owners across the country. We ascertain information about the forest land they own, their ownership objectives, management practices, future intentions, and demographics. Results of the most recent cycle of forest owner surveys, initiated in 2002, were first published in the Journal of Forestry (Butler and Leatherberry 2004).



**Figure 1. Public and private forest ownership in the United States, 2003.**

We now know there are over 10 million family forest owners in the United States, and that their characteristics are as diverse as their forest holdings. The current generation of forest owners is more interested in aesthetics and other environmental services and less interested in timber production than their predecessors. This trend is likely to continue, as a large percentage of the forest land is owned by people planning to transfer their forest land within the next 5 to 10 years. State-level results from the NWOS are being included in the FIA 5-year comprehensive reports. In 2007, we are planning to publish a comprehensive set of state-level statistics that will fully supplant the 1994 ownership data reports (Birch 1996). More information, including national summary tables, can be found on the NWOS website: [www.fs.fed.us/woodlandowners](http://www.fs.fed.us/woodlandowners).

**Outcome:** This information is used by federal and state forest agencies, non-governmental organizations, academicians, private consultants, and private forest owners. They use it to craft and monitor forest policies, develop outreach programs, and to study myriad attributes of forest owners.



Butler, B. J. and E. C. Leatherberry. 2004. America's family forest owners. *Journal of Forestry* 102 (7): 4-9.

Birch, T.W. 1996. Private forest-land owners of the United States, 1994. U.S. Department of Agriculture, Forest Service, Northeastern Forest Experiment Station, Radnor, PA. Resource Bulletin NE-134. 183 pp.

Contact: Brett Butler, [bbutler01@fs.fed.us](mailto:bbutler01@fs.fed.us), 610-557-4045.

### The Northern Monitoring Program (NMP)

Accomplishment: The Northern Monitoring Program (NMP), led by Chip Scott and based in Newtown Square, PA, grew out of the merger of the Northeastern and North Central FIA programs. The goal of NMP is to develop leading-edge forest ecosystem monitoring methods and tools to help FIA and other organizations monitor forests, resulting in compatible results across the landscape. Methods and tools will be applied in the Northern states, but can and will have national and international significance. NMP is conducting research on small area estimation and on land use change detection protocols. In collaboration with The Nature Conservancy, NatureServe, and the State of New York, they are developing methods to plan an efficient monitoring system for forest condition.



Outcome: The NMP has been asked by International Programs of the Forest Service to provide inventory and monitoring assistance in Russia and Honduras. NMP is also working with the National Park Service on sample plot selection procedures and with Region 9 of the National Forest System on monitoring plan development and implementation. The NMP has obtained a grant from the Wisconsin Department of Natural Resources (WDNR) to help develop a monitoring program on their state-owned lands. By working from the bottom up with WDNR and FIA staff, the NMP has begun to define monitoring objectives, create a sampling and plot design, field guide, data recorder software and analytical tools. This project will be the first of many in which the NMP works closely with cooperators both within and external to the Forest Service to promote consistent and reliable inventory and monitoring programs, based on the tried and true methodology used by FIA and its researchers.

Contact: Charles Scott, [ctscott@fs.fed.us](mailto:ctscott@fs.fed.us), 610-557-4020

### FIA Data Workshops

The Information Management section is planning FIA data workshops across the region. The goal is to facilitate access to FIA data on the web and to inform users of current FIA data request guidelines and privacy laws. Session topics will include:

- [FIA Publications](#)
  - Hardcopy availability
  - Electronic publications available on SRS website
- [Data Request Procedure](#)



See "Upcoming Events" on page 4 for date and location of FIA data workshops!



- Spatial Data Services
- Privacy Laws
- Memorandum of Understanding (MOU)
- [FIA Data Mart: Download Files](#)
  - Snapshot\_FIADB
  - NIMS\_FIADB
  - RPA Summary DB (shapefiles)
- [Forest Inventory Mapmaker 2.1](#)
  - Standard Tables
  - Custom Tables
  - Create Maps
- [Timber Product Output \(TPO\)](#)
  - SRS TPO Reports
  - National TPO Reports
  - RPA TPO Tablemaker
- [SOLE: Southern On Line Estimator](#)

#### Registration and Instructions:

Each session will last approximately 8 hours. Each session will be limited to 16 participants. A limited number of laptops will be provided and will be shared between 2-3 people depending on attendance. All meeting rooms will have wireless internet access. Participants who have laptops are encouraged to bring them, but due to technical constraints only 10-12 laptops may be able to run certain web applications concurrently.

To register or to obtain more information, please call Jeff Turner at 865-862-2053 or send an e-mail with your name and phone number to [jturner02@fs.fed.us](mailto:jturner02@fs.fed.us). A block of rooms has been reserved at each hotel under the group name: "USDA Forest Service".

## *Studies in progress...*

**Study Title:** Fragmentation and Parcelization in New Hampshire (1990-2000): The Extent of Changes in Fragmentation and Characteristics of Contiguous and Fragmented Forests

**Participants:** Randall Morin, Brett butler, Andrew Lister, Tonya Lister, Rachael Riemann, Matt Tansey, and Tom Luther

**Status:** Results to be presented at 2006 Society of American Foresters Convention.

**Results:** Forest fragmentation and urbanization continues to be a topic of great concern in the Northeast and has the potential to impact many facets of natural ecosystems. Regional and national forest fragmentation assessments highlight where forest fragmentation has occurred at one point in time, but data on the composition, structure, and health of these forests are less abundant in the scientific literature. A raster land cover classification of New Hampshire was used to characterize the level of fragmentation and urbanization in the local neighborhood surrounding each forested Forest Inventory and Analysis (FIA) plot. FIA data were used to characterize more and less fragmented forests in New Hampshire with respect to forest type, successional stage, geographical location, diversity, and health. Findings suggest that white/jack/red pine forest types are being fragmented at a much faster rate than spruce/fir or northern hardwood types. Additionally, forestland with sawtimber sized trees is becoming fragmented much faster than forestland with smaller trees.

**Contact:** Randall Morin, [rsmorin@fs.fed.us](mailto:rsmorin@fs.fed.us)

**Study Title:** Multi-Agency Protocols Team to Develop a Data Collection Strategy for a National Assessment of Rangelands

**Participants:** Larry Bryant, Range Ecology and Vegetation; Renee O'Brien, Chris Witt, and Darin Toone, RMRS-FIA; Marc LaPine, PNW-FIA; Jim Alegria and Carol Apple, Region 6.

**Status:** A second protocols meeting will be held in Ogden, UT, August 8-10, 2006. A field test will be conducted in Bend, OR, August 22-24, 2006.

**Results:** The Sustainable Rangelands Roundtable (SRR), a collaborative partnership process established to assess rangeland sustainability, has established a framework of 5 criteria and 64 indicators that embody social, economic, and ecological factors. Of those 64 indicators, 5 core ecological indicators have been chosen to be evaluated in a pilot inventory project that will be conducted in Oregon in 2007. FIA and NRI have been tasked to work together to develop protocols for the pilot. The indicators are: bare ground, vegetation composition, invasive plants, fragmentation, and amount of rangeland. The expected outcomes are: amount and distribution of rangelands; amount and distribution of bare ground on rangelands; amount and distribution of vegetation cover types; amount and distribution of invasive species; and degree of fragmentation on rangelands.

**Contact:** Renee O'Brien, [robrien@fs.fed.us](mailto:robrien@fs.fed.us)

**Study Title:** Landuse Change in Oregon 2000-2005

**Participants:** Jeff Kline, David Azuma, Erica Hansen, and Dale Weyermann, PNW; Gary Lettman, Oregon Department of Forestry

**Status:** Initial pilot data collection nearing completion.

**Results:** The slowing of land conversion from forest and agricultural uses to more urban uses coincides with the enactment of Oregon's Landuse Laws. Previous studies have shown that the number of structures has continued to increase in areas that have stayed in the same landuse zone from 1970's to 2000. Additional studies have shown that increasing structures within the wildland forest zone can have an effect on the management of resources. With new legislation that enables land owners to contest the previous landuse laws, there is a general consensus that conversion will increase. The objective of the present study is to add an additional point in time and convert to a new technology (digital imagery) with the idea of enabling ease of future assessment.

**Contact:** Dave Azuma, [dazuma@fs.fed.us](mailto:dazuma@fs.fed.us)

### Summer Quarterly Newsletter from PNW-FIA



This newsletter is available at <http://www.fs.fed.us/pnw/fia/local-resources/pdf/nl/summer06.pdf>

## Upcoming events...

Event	Location	Date
PNW-FIA Regional Strategy Committee Meeting	Portland International Airport Conference Center, Room Multnomah AB, Portland, Oregon <a href="http://www.flypdx.com/CnfrnCenter_Home.aspx">http://www.flypdx.com/CnfrnCenter_Home.aspx</a>	September 15, 2006
FIA Data Workshops	Auburn Hotel, Auburn, AL <a href="http://www.auhcc.com/">http://www.auhcc.com/</a> 334-821-8200 or 800-228-2876	September 26-27, 2006 (after SE-SAF meeting)
Annual FIA Symposium	Portola Plaza Hotel, Monterey, CA <a href="http://www.portolaplazahotel.com">http://www.portolaplazahotel.com</a>	October 16-19, 2006

## Register for the Annual FIA Symposium Here!

<http://fia.fs.fed.us/symposium/>





## Summer safety tips...

### Hiking and Camping Safety

Many families will head to our national parks and forests this summer to enjoy the great outdoors. But if you're not prepared to rough it in the woods, hiking or camping can be a rough experience. The best way to help guarantee a good time for all is to plan ahead carefully and follow commonsense safety precautions.

▶ [More Hiking and Camping Safety Tips](#)

### Water Safety

The Red Cross is brimming with water safety tips to keep your family safe this summer. The most basic: Learn to swim! Take some lessons at your local pool. The best thing anyone can do to stay safe in and around the water is to learn to swim.

- Swim in supervised areas only.
- Obey all rules and posted signs.
- Don't mix alcohol and swimming. Alcohol impairs your judgment, balance, and coordination, affects your swimming and diving skills, and reduces your body's ability to stay warm.
- Pay attention to local weather conditions and forecasts. Stop swimming at the first indication of bad weather.

▶ [More Water Safety Tips](#)

### Category of Links

#### National Program

<http://fia.fs.fed.us>

#### Pacific Northwest

<http://www.fs.fed.us/pnw/fia/>

#### Interior West

<http://www.fs.fed.us/rm/ogden/>

#### North Central

<http://www.ncrs.fs.fed.us/4801/>

#### Northeast

<http://www.fs.fed.us/ne/fia/>

#### Southern

<http://srsfia1.fia.srs.fs.fed.us/>

*"The U.S. Department of Agriculture (USDA) prohibits discrimination in all its programs and activities on the basis of race, color, national origin, age, disability, and where applicable, sex, marital status, familial status, parental status, religion, sexual orientation, genetic information, political beliefs, reprisal, or because all or part of an individual's income is derived from any public assistance program. (Not all prohibited bases apply to all programs.) Persons with disabilities who require alternative means for communication of program information (Braille, large print, audiotape, etc.) should contact USDA's TARGET Center at (202)720-2600 (voice and TDD). To file a complaint of discrimination, write to USDA, Director, Office of Civil Rights, 1400 Independence Avenue, S.W., Washington, DC 20250-9410, or call (800) 795-3272 (voice) or (202) 720-6382 (TDD). USDA is an equal opportunity provider and employer."*

