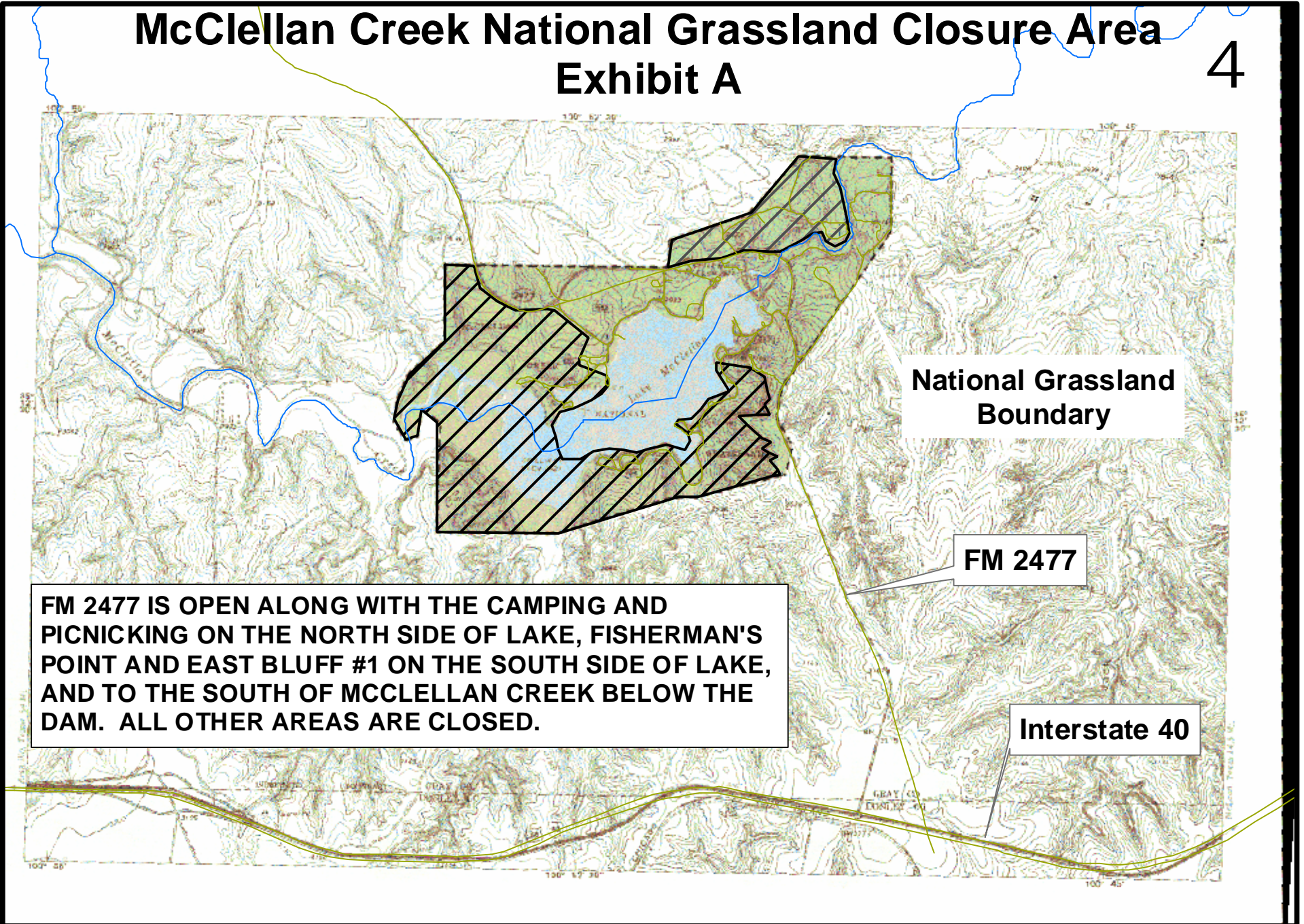


# McClellan Creek National Grassland Closure Area Exhibit A

4



**National Grassland  
Boundary**

**FM 2477**

**Interstate 40**

**FM 2477 IS OPEN ALONG WITH THE CAMPING AND  
PICNICKING ON THE NORTH SIDE OF LAKE, FISHERMAN'S  
POINT AND EAST BLUFF #1 ON THE SOUTH SIDE OF LAKE,  
AND TO THE SOUTH OF MCCLELLAN CREEK BELOW THE  
DAM. ALL OTHER AREAS ARE CLOSED.**