

Chapter 5: Plan Implementation

New and Existing Projects

This CCP outlines an ambitious course of action for the future management of Patoka River NWR & MA. The ability to enhance wildlife habitats on the Refuge and to maintain existing and develop additional quality public use facilities will require a significant commitment of staff and funding from the Service. The Refuge will continually need appropriate operational and maintenance funding to implement the objectives in this plan.

The following provides a brief description of the highest priority Refuge projects, as chosen by the Refuge staff and listed in the Service Asset and Maintenance Management System (SAMMS). Completion of these projects is dependent on acquiring suitable lands. A full listing of unfunded Refuge projects and operational needs can be found in Appendix J.

Construct Visitor Parking Lots

As new lands are acquired, appropriate sites will be identified to construct small gravel parking lots to provide safe parking for wildlife dependent recreation activities.

Completion of Observation Deck

Completion of this project will include an accessible boardwalk from the parking lot to the existing observation deck, an interpretive kiosk and signs, and two ADA approved spotting scopes.

Reconnect Oxbows on Patoka River

In cooperation with the Army Corps of Engineers we will select a small site along the channelized portion of the Patoka River cutoff oxbow will be



Anas platyrhynchos ova, Patoka River NWR & MA. Photo credit: USFWS

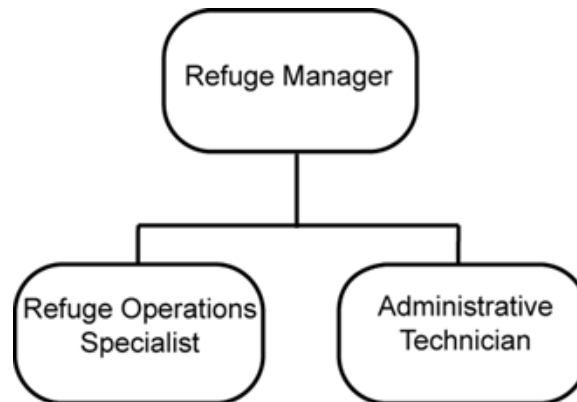
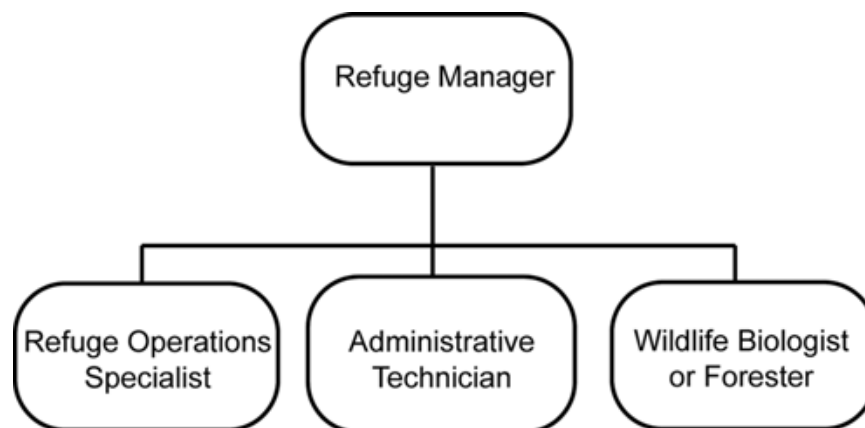
reconnected to the main channel of the Patoka River as a demonstration project and to evaluate its effectiveness in restoring bottomland hydrology.

Maintenance and Construction of Storage Facilities

When an appropriate tract of land is purchased a permanent maintenance and storage facility will be constructed to support Refuge operations.

Macrotopography Wetlands

On bottomland farmland construct a series of ridge and swale wetland complexes with depressional basins within the floodplain ranging in size from one-tenth to 5 acres with depths from 0 to 24 inches. These wetlands will be formed in a variety of shapes to provide landscape diversity. The ridges and mounds will be planted with bottomland hardwood trees.

Figure 15: Current Staffing Chart, Patoka River NWR**Figure 16: Staffing Required to Fully Implement Plan**

Future Staffing Requirements

Implementing the visions set forth in this CCP will require additions to the organizational structure of Patoka River National Wildlife Refuge. Existing staff will direct their time and energy in somewhat new directions and one new staff member would be added to assist in these efforts. The first organizational chart shows the existing Refuge staff as of Fiscal Year 2007. A permanent full-time wildlife biologist or forester is needed to fully implement this plan. See Figure 16.

Partnership Opportunities

Partnerships have become an essential element for the successful accomplishment of Patoka River NWR goals, objectives, and strategies. The objectives outlined in this CCP need the support and the partnerships of federal, state and local agencies, non-governmental organizations and individual citizens. This broad-based approach to managing fish and wildlife resources extends beyond social and political boundaries and requires a foundation of support from many. Patoka River NWR will continue to seek creative partnership opportunities to achieve its vision for the future.

Particularly notable partners of the Refuge include:

Table 5: Step-down Management Plan Schedule

Step-down Management Plan	Completed or Updated	Anticipated Completion or Revision
Safety	--	2008
Air Quality Management	--	2008
Hunting and Fishing	1996	2010
Wildlife Observation and Photography	--	2012
Interpretation	--	2013
Habitat Management	--	2010
Inventory and Monitoring	--	2009
Fire Management	2002	-

- Ducks Unlimited
- Duke Energy
- Waterfowl USA
- National Fish and Wildlife Foundation
- Natural Resources Conservation Service
- Audubon Society
- Izaak Walton League
- Quail Unlimited
- McCormick Farms
- Conservation Fund
- Four Rivers RC&D
- Indiana Department of Natural Resources
- Division of Fish and Wildlife
- Division of Forestry
- Division of Oil and Gas
- Division of Mining and Reclamation
- Army Corps of Engineers

- Hunting and Fishing
- Wildlife Observation and Photography
- Interpretation
- Habitat Management
- Inventory and Monitoring
- Fire Management

Step-down Management Plans

Step-down management plans help meet the goals and objectives of the CCP. Some step-down plans are required by Service policy and others are used to specify strategies and implementation schedules beyond the detail of the CCP. The following list and Table 5 show the step-down management plans we intend to prepare or revise to realize the intent of the CCP.

- Safety
- Air Quality Management

Archeological and Cultural Values

As part of its larger conservation mandate and ethic, the Service through the Refuge Manager applies the several historic preservation laws and regulations to ensure historic properties are identified and are protected to the extent possible within its established purposes and Refuge System mission.

The Refuge Manager early in project planning for all undertakings, informs the RHPO (Regional Historic Preservation Officer) to initiate the Section 106 process. Concurrent with public notification and involvement for environmental compliance and compatibility determinations if applicable, or cultural resources only if no other issues are involved, the Refuge Manager informs and requests comments from the public and local officials through presentations, meetings, and media notices; results are provided to the RHPO.

Archeological investigations and collecting are performed only in the public interest by qualified archeologists or by persons recommended by the Governor working under an Archeological



Young white-tailed buck, Patoka River NWR & MA. Photo credit: USFWS

Resources Protection Act permit issued by the Regional Director. Refuge personnel take steps to prevent unauthorized collecting by the public, contractors, and Refuge personnel.

The Refuge Manager will, with the assistance of the RHPO, develop a step-down plan for surveying lands to identify archeological resources and for developing a preservation program to meet the requirements of Section 14 of the Archaeological Resources Protection Act and Section 110(a)(2) of the National Historic Preservation Act.

The Refuge Manager should have and implement a plan for inspecting the condition of known cultural resources on the Refuge and report to the RHPO changes in the conditions.

The Refuge Manager will initiate budget requests or otherwise obtain funding from the 1 percent O&M program base provided for the Section 106 process compliance:

1. Inventory, evaluate, and protect all significant cultural resources located on lands controlled by the FWS, including historic properties of religious and cultural significance to Indian tribes.
2. Identify and nominate to the National Register of Historic Places all historic properties including those of religious and cultural significance to Indian tribes.

3. Cooperate with Federal, state, and local agencies, Native American tribes, and the public in managing cultural resources on the Refuge.
4. Integrate historic preservation with planning and management of other resources and activities. Historic buildings are rehabilitated and adapted to reuse when feasible.
5. Recognize the rights of Native American to have access to certain religious sites and objects on Refuge lands within the limitations of the FWS mission.

Monitoring and Evaluation

The direction set forth in this CCP and specifically identified strategies and projects will be monitored throughout the life of this plan. On a periodic basis, the Regional Office will assemble a station review team whose purpose will be to visit Patoka River NWR and evaluate current Refuge activities in light of this plan. The team will review all aspects of Refuge management, including direction, accomplishments and funding. The goals and objectives presented in this CCP will provide the baseline from which this field station will be evaluated.

Plan Review and Revision

The CCP for the Refuge is meant to provide guidance to the refuge manager and staff over the next 15 years. However, the CCP is also a dynamic and flexible document and several of the strategies contained in this plan are subject to natural uncontrollable events such as windstorms and floods. Likewise, many of the strategies are dependent upon Service funding for staff and projects. Because of all these factors, the recommendations in the CCP will be reviewed periodically and, if necessary, revised to meet new circumstances. If any revisions are major, the review and revision will include the public.

