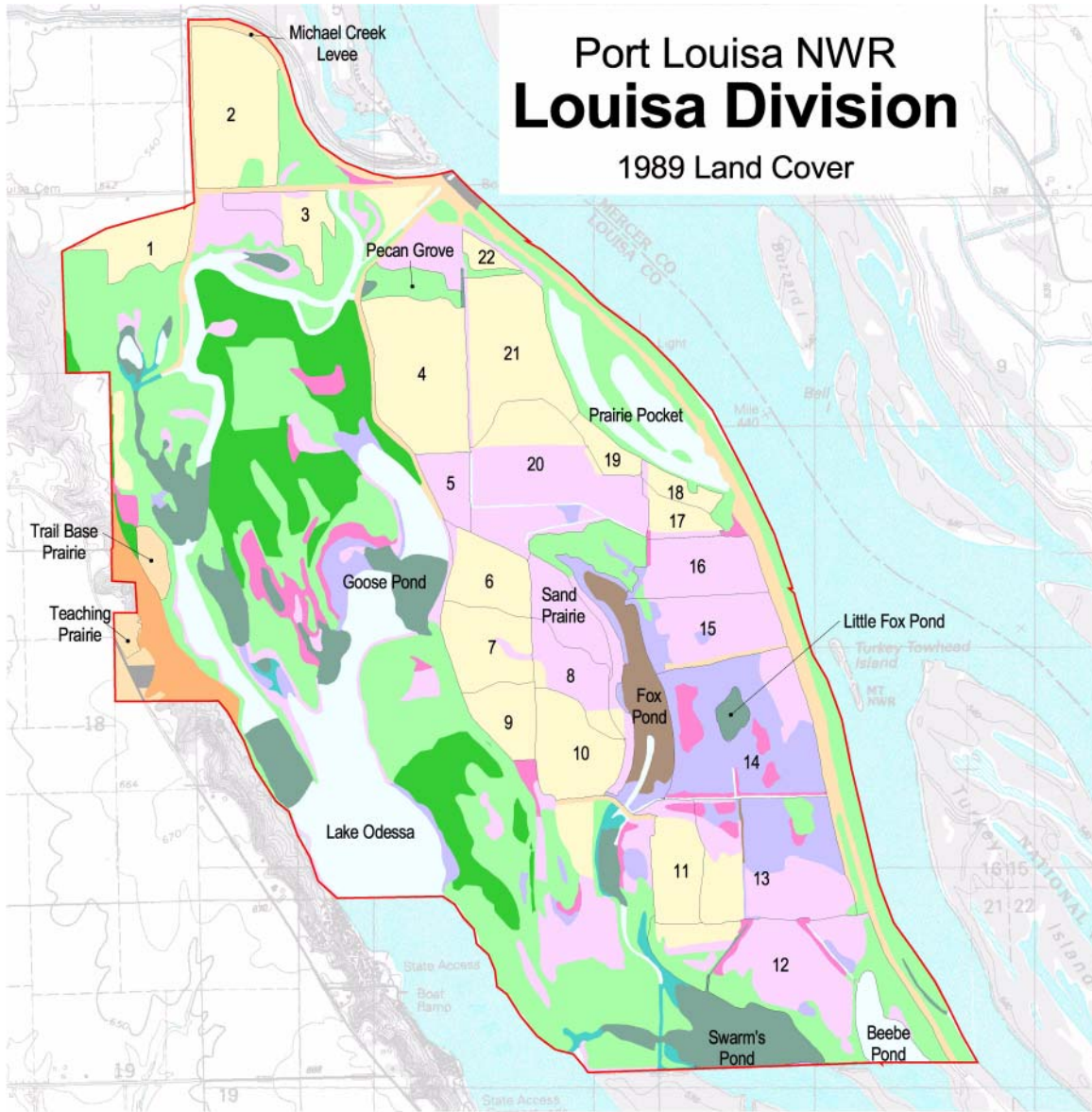


# Port Louisa NWR Louisiana Division 1989 Land Cover



### Vegetation Types:

#### Wetlands

- Open Water
- Permanently Flooded Submergents
- Semi-permanently Flooded Emergents
- Seasonally Flooded Emergents

#### Forest

- Wet Floodplain Forest
- Mesic Bottomland Forest
- Upland Forest

- Wet Meadow
- Grassland
- Scrub/Shrub
- Agriculture
- Developed
- Sand/Mud

- Refuge Boundary
- Management Units



0.4 0 0.4 Miles