



U.S. Department  
of Transportation  
**Federal Aviation  
Administration**

# **ADMINISTRATOR'S FACT BOOK**

**November 2008**

Produced by:  
Assistant Administrator for Financial Services

Website:  
[http://www.faa.gov/about/office\\_org/headquarters\\_offices/aba/  
admin\\_factbook/](http://www.faa.gov/about/office_org/headquarters_offices/aba/admin_factbook/)

## **FAA MISSION**

*To provide the safest, most efficient  
aerospace system in the world.*

## **FAA VISION**

*We continue to improve the safety and  
efficiency of flight. We are responsive  
to our customers and are accountable  
to the taxpayer and the flying public.*

## Table of Contents

FAA Vision and Mission.....Inside Front Cover\*  
FAA Values ..... Inside Back Cover\*

### Safety

Aviation Accidents by Type of Operation.....	3*
Aviation Accident Rates by Type of Operation.....	4*
Airspace Incidents by Incident Type.....	5*
Airspace Incident Rates by Incident Type.....	6*
NTSB U.S. Transportation Fatalities.....	7*

### FAA Air Traffic

FAA Air Traffic Activity.....	8*
Air Route Traffic Control Center Activity.....	9*
50 Busiest FAA Air Traffic Control Towers.....	10*
50 Busiest Radar Approach Control Facilities.....	12*
Automated Flight Service Stations Activity.....	14*

### Airports

Number of U.S. Airports.....	16
National Airspace Total System Delays.....	17*

### Aircraft

U.S. Air Carrier Activity.....	18*
U.S. General Aviation and Air Taxi Activity.....	19
Aircraft Certification Service.....	20

### Industry Trends

Scheduled U.S. Air Carrier Traffic & Fin. Trends.....	21*
Aviation Forecasts.....	22*

### Commercial Space Transportation

AST Licensed Activity.....	23
U.S. Commercial Space Launch Schedule.....	24

### Airmen

Active Pilots and Nonpilots.....	25
FAA Organizational Chart.....	Center Fold*

**Table of Contents (cont.)**

FAA Regional Boundaries Map .....28

**FAA Resources**

FAA Employment..... 29\*  
FAA Percent Minority and Female Employment ..... 30\*  
FAA Major Work Force Employment..... 31\*  
Labor Relations..... 32\*  
FAA Finances..... 33\*  
FAA NAS Operational Facilities..... 34\*

**Organization**

FAA Officials—Washington Headquarters..... 35\*  
FAA Officials—Major Field Organizations..... 38\*  
FAA Officials—International Area Offices..... 40\*  
FAA Flight Plan 2008-2012 ..... 41\*

---

For further information call ABA-1 (202-267-9105)

\*Updated this issue

Distribution: A-WXYZE-3; A-FOF-O(STD)

**Aviation Accidents by Type of Operation**

Type of Operation	Year	Jan	Feb	Mar	Apr	May	Jun	Jul	Aug	Sep	Oct	Nov	Dec	Year Total
Large Air Carrier	2007	0	3	2	6	1	4	3	2	1	1	0	5	28
	2008	2	3	0	1	3	3	2	0	-	-	-	-	14
Commuter	2007	1	0	0	0	0	2	0	0	0	0	0	0	3
	2008	0	0	0	1	0	0	0	3	-	-	-	-	4
Air Taxi	2007	5	4	5	6	7	3	4	8	6	3	4	7	62
	2008	5	5	4	6	6	9	1	2	-	-	-	-	38
General Aviation	2007	78	64	121	146	148	179	214	168	176	142	106	83	1,645
	2008	70	92	109	137	165	165	170	152	-	-	-	-	1,060
Rotorcraft*	2007	9	12	21	12	15	14	28	13	19	14	13	11	181
	2008	8	6	14	11	16	17	15	13	-	-	-	-	100

\* Part 135 and US registered general aviation, and US-public use rotorcraft accidents.

Note: Preliminary data and subject to change.  
 As of: 09/23/08

Source: AAI-220  
 (202) 267-3279

**Safety**

### Aviation Accident Rates by Type of Operation

Type of Operation	2004		2005		2006		2007		% Chg 07-06	
	Number	Rate	Number	Rate	Number	Rate	Number	Rate	Number	Rate
Large Air Carriers.....	30	.15	40	.20	33	.17	26	.14	-21%	-18%
Commuter.....	4	1.32	6	2.00	3	1.00	3	0.99	0%	-1%
Air Taxi.....	66	2.04	65	1.70	53	1.42	62	1.69	17%	19%
General Aviation.....	1,817	6.49	1,870	7.20	1,518	6.33	1,631	6.84	7%	8%

Accident Rates are per 100,000 Flight Hours. Flight hours compiled by FAA.  
 Rotorcraft rates discontinued, currently under review.

Note: 2007 data preliminary.  
 As of: 09/30/08

Source: NTSB  
[www.ntsb.gov/aviation/stats.htm](http://www.ntsb.gov/aviation/stats.htm)

4

**Airspace Incidents by Incident Type**

Incident Type	Year	Jan	Feb	Mar	Apr	May	Jun	Jul	Aug	Sep	Oct	Nov	Dec	Year Total
Near Midair Collisions	2006	9	5	8	14	11	4	8	15	13	10	6	3	106
	2007	6	11	13	5	10	9	11	12	12	6	10	6	111
	2008	7	9	13	5	9	9	4	12	0	0	0	0	68
Pilot Deviations	2006	160	199	214	245	241	210	227	241	275	291	234	178	2,715
	2007	207	151	220	253	281	247	245	288	225	291	247	190	2,875
	2008	243	215	258	290	348	292	310	335	0	0	0	0	2,291
Operational Errors	2006	93	120	110	106	114	111	116	126	95	127	112	77	1,307
	2007	83	94	121	133	115	132	104	128	90	115	99	104	1,318
	2008	103	89	143	131	153	118	155	104	0	0	0	0	996
Vehicle Pedestrian Deviations	2006	13	11	27	21	21	23	18	27	21	20	15	20	237
	2007	24	21	21	21	24	30	28	18	22	22	27	18	276
	2008	27	18	19	21	25	35	33	28	0	0	0	0	204
Surface Incidents	2006	61	68	92	80	79	64	93	94	109	91	71	68	991
	2007	67	79	84	98	101	111	111	112	91	92	109	80	1,135
	2008	97	87	91	95	118	118	126	106	0	0	0	0	838
Runway Incursions*	2006	21	25	25	25	29	32	35	33	25	35	27	28	341
	2007	21	27	31	35	33	38	33	36	25	<b>72</b>	<b>89</b>	<b>65</b>	506
	2008	<b>77</b>	<b>67</b>	<b>74</b>	<b>75</b>	<b>92</b>	<b>102</b>	<b>98</b>	<b>100</b>	0	0	0	0	<b>685</b>

Note: Preliminary data and subject to change.

Note: Bolded data will give invalid results based on new R1 data compilation.

Source: ATO-A (IT)

(202) 385-4802

\*ATO-S

(202) 385-4788

As of: 09/30/08

\*As of: 09/30/08

CH

**Airspace Incident Rates by Incident Type**

Incident Type									Percent Change	
	2004		2005		2006		2007		2006 - 2007 (4)	
	Number	Rate	Number	Rate	Number	Rate	Number	Rate	Number	Rate
Operational Errors (1).....	1,214	.77	1,497	.95	1,307	.85	1,318	.86	1%	1%
Pilot Deviations (2).....	2,621	1.59	2,244	1.36	2,715	1.65	2,875	1.75	6%	6%
Surface Incidents (3).....	870	1.38	944	1.51	991	1.62	1,135	1.87	15%	15%

(1) Per 100,000 Facility Activities

(2) Per 100,000 Flight Hours

(3) Per 1,000,000 Airport Operations

(4) Calculations use fifteen decimal places for rates (rounded two places for display).

Note: Data preliminary and subject to change.

Source: ATO-A (IT)

(202) 385-4802

As of: 09/16/08



**National Transportation Safety Board  
 2006-2007 U.S. Transportation Fatalities**

	2006	2007 <sup>1</sup>
<b>Highway</b>		
Passenger cars.....	17,925	16,520
Light Trucks and Vans.....	12,761	12,413
Pedestrians.....	4,795	4,654
Motorcycles.....	4,837	5,154
Pedalcycles <sup>2</sup> .....	772	698
Medium and heavy trucks.....	805	802
Buses.....	27	37
All Other <sup>3</sup> .....	786	781
<b>Total.....</b>	<b>42,708</b>	<b>41,059</b>
<b>Grade Crossings<sup>4</sup></b>	<b>(369)</b>	<b>(338)</b>
<b>Rail</b>		
Intercity <sup>5</sup>		
Trespassers and nontravellers <sup>6</sup> .....	562	562
Employees and contractors.....	23	22
Passengers on trains.....	2	5
Light, heavy, and commuter rail <sup>7</sup> .....	167	219
<b>Total.....</b>	<b>774</b>	<b>808</b>
<b>Marine</b>		
Recreational Boating.....	710	685
Cargo Transport.....	28	24
Commercial fishing <sup>8</sup> .....	44	33
Commercial Passengers.....	18	24
<b>Total.....</b>	<b>800</b>	<b>766</b>
<b>Aviation</b>		
General Aviation.....	703	491
Airlines.....	50	1
Air Taxi.....	16	43
Commuter.....	2	0
Foreign/Unregistered <sup>9</sup> .....	13	10
<b>Total.....</b>	<b>784</b>	<b>545</b>
<b>Pipeline</b>		
Gas.....	19	11
Liquids.....	0	4
<b>Total.....</b>	<b>19</b>	<b>15</b>
<b>GRAND TOTAL.....</b>	<b>45,085</b>	<b>43,193</b>

<sup>1</sup> Numbers for 2007 are preliminary estimates. Aviation data from NTSB, marine data from Department of Homeland Security; all other data from DOT. <sup>2</sup> Includes bicycles or other cycles. <sup>3</sup> Includes vehicle nonoccupants other than pedestrians and occupant fatalities in other vehicle types, ex. farm or construction equipment. <sup>4</sup> Grade crossing fatalities are not counted as a separate category for determining the grand total because they are included in the highway and rail categories, as appropriate. <sup>5</sup> Data reported to Federal Rail Administration (FRA). <sup>6</sup> Includes persons on railroad property with and without permission. Does not include motor vehicle occupants killed at grade crossings. <sup>7</sup> Data reported to the Federal Transit Administration (FTA). Fatalities for commuter rail operations may also be reported to the FRA and may be included in the intercity railroad fatalities. <sup>8</sup> Refers to only operational fatalities. <sup>9</sup> Includes non-U.S. registered aircraft involved in accidents in the U.S.

## Air Traffic

### FAA Air Traffic Activity (In Thousands)

Aircraft Handled by	Jan-Aug 2008*	Jan-Aug 2007	Jan-Dec 2007
<b>FAA ARTCC's</b>			
Air Carrier.....	16,018	16,839	24,891
Air Taxi.....	6,837	6,402	9,826
General Aviation.....	5,067	5,564	8,246
Military.....	2,498	2,595	3,785
<b>TOTAL....</b>	<b>30,420</b>	<b>31,490</b>	<b>46,748</b>
<b>Airport Operations</b>			
<b>Logged by FAA Towers</b>			
Air Carrier.....	9,073	8,959	13,445
Air Taxi.....	6,283	6,595	9,898
General Aviation.....	12,307	12,989	19,175
Military.....	987	1,083	1,554
<b>TOTAL....</b>	<b>28,650</b>	<b>29,726</b>	<b>44,072</b>
<b>Instrument Operations</b>			
<b>Logged by FAA Towers</b>			
Air Carrier.....	9,621	9,657	14,480
Air Taxi.....	7,349	7,867	11,645
General Aviation.....	10,482	11,153	16,487
Military.....	1,600	1,707	2,461
<b>TOTAL....</b>	<b>29,032</b>	<b>30,384</b>	<b>45,073</b>
<b>Flight Services</b>			
<b>Logged by: **</b>			
Flight Service Stations.....	543	661	796
Automated Flight Service Stations.....	2,414	7,541	7,715
<b>TOTAL....</b>	<b>2,957</b>	<b>8,202</b>	<b>8,511</b>

\*Preliminary

As of: 09/10/08

\*\*As of: 09/10/08

Source: APO-130

(202) 267-3350

ATO-A/AJA

(202) 385-4734

### Air Route Traffic Control Center Activity

CY 2007 Rank	Center	Aircraft Handled (000's)		
		Jan-Aug 2008*	Jan-Aug 2007	Jan-Dec 2007
1	Atlanta, GA	2,076	2,133	3,182
2	New York, NY	2,022	2,050	3,056
3	Leesburg, VA	1,916	1,969	2,932
4	Chicago, IL	1,766	1,893	2,817
5	Cleveland, OH	1,723	1,882	2,799
6	Indianapolis, IN	1,720	1,800	2,683
7	Jacksonville, FL	1,672	1,772	2,600
8	Miami, FL	1,707	1,752	2,526
9	Los Angeles, CA	1,543	1,580	2,368
10	Memphis, TN	1,497	1,537	2,300
11	Houston, TX	1,483	1,495	2,222
12	Fort Worth, TX	1,410	1,455	2,176
13	Minneapolis, MN	1,346	1,392	2,066
14	Kansas City, KS	1,320	1,372	2,048
15	Nashua, NH (Boston)	1,266	1,287	1,913
16	Denver, CO	1,252	1,274	1,895
17	Albuquerque, NM	1,125	1,172	1,746
18	Oakland, CA	1,141	1,142	1,730
19	Salt Lake City, UT	998	1,031	1,534
20	Seattle, WA	887	891	1,322
21	Anchorage, AK	387	393	581
22	Guam **	164	177	252

\*Preliminary

\*\*Center Radar Approach Control (CERAP)

As of: 09/30/08

Source: APO-130  
 (202) 267-3350

### 50 Busiest FAA Airport Traffic Control Towers

CY 2007 Rank	Tower and State	Airport Operations (000's)		
		Jan-Aug 2008*	Jan-Aug 2007	Jan-Dec 2007
1	Hartsfield-Jackson Atl Intl, GA.....	658	659	992
2	Chicago/O'Hare Intl, IL.....	601	623	927
3	Dallas/Ft. Worth Intl, TX.....	443	458	687
4	Los Angeles Intl, CA.....	439	451	681
5	Denver International, CO.....	427	416	620
6	Las Vegas/McCarran Intl, NV.....	402	411	619
7	Houston/G Bush Intercont'l, TX.....	404	407	604
8	Phoenix Sky Harbor Intl, AZ.....	348	362	539
9	Charlotte/Douglas Intl, NC.....	363	349	526
10	Philadelphia Intl, PA.....	335	335	500
11	Detroit Metro Wayne Co., MI.....	316	315	467
12	John F. Kennedy Intl, NY.....	303	304	457
13	Minneapolis-St. Paul Intl, MN.....	306	305	454
14	Newark International, NJ.....	301	297	442
15	Salt Lake City Intl, UT.....	271	287	421
16	Washington Dulles Intl, VA.....	268	262	419
17	Boston/Logan Intl, MA.....	259	274	402
18	La Guardia, NY.....	261	267	397
19	Long Beach/Daugherty, CA.....	238	274	396
20	Miami International, FL.....	255	262	386
21	San Francisco Intl, CA.....	264	249	380
22	Phoenix-Deer Valley, AZ.....	251	263	378
23	Memphis International, TN.....	246	252	377
24	Van Nuys, CA.....	270	253	374
25	Orlando International, FL.....	244	248	366

\*Preliminary

Source: APO-130  
 (202) 267-3350

As of: 09/30/08

### 50 Busiest FAA Airport Traffic Control Towers

CY 2007 Rank	Tower and State	Airport Operations (000's)		
		Jan-Aug 2008*	Jan-Aug 2007	Jan-Dec 2007
26	Metropolitan Oakland Int'l, CA.....	190	234	348
27	Seattle Tacoma Int'l, WA.....	238	232	347
28	Santa Ana/John Wayne, CA.....	222	235	342
29	Denver/Centennial, CO.....	220	225	337
30	Covington/Cincinnati Int'l, KY.....	203	220	328
31	Mesa/Falcon Field, AZ.....	219	201	314
32	Fort Lauderdale/Hollywood, FL.....	211	211	308
33	Daytona Beach Int'l, FL.....	220	201	306
34	Honolulu International, HI.....	194	210	307
35	Chicago Midway, IL.....	180	204	305
36	Seattle/Boeing Field, WA.....	211	209	300
37	Anchorage International, AK.....	200	210	300
38	Baltimore/Wash. Int'l, MD.....	191	199	297
39	San Diego/Gillespie Field, CA.....	165	203	296
40	Orlando/Sanford, FL.....	148	217	294
41	Tulsa/Riverside, OK.....	232	184	292
42	Washington National, DC.....	186	187	279
43	Portland International, OR.....	176	178	266
44	Miami/Kendall-Tamiami, FL.....	218	174	263
45	Tampa International, FL.....	169	176	259
46	Tucson International, AZ.....	149	176	258
47	Lambert-St. Louis Int'l, MO.....	171	172	257
48	Raleigh-Durham Int'l, NC.....	157	168	253
49	Cleveland Hopkins Int'l, OH.....	167	164	245
50	Dallas Love Field, TX.....	154	164	244

### 50 Busiest Radar Approach Control Facilities

CY 2007 Rank	Facilities/State	Instrument Ops (000s)		
		Jan-Aug 2008*	Jan-Aug 2007	Jan-Dec 2007
1	Southern Calif. TRACON, CA.....	1,514	1,493	2,243
2	New York TRACON, NY.....	1,359	1,383	2,066
3	Potomac TRACON, DC.....	1,078	1,151	1,702
4	Northern Calif. TRACON, CA.....	1,062	1,091	1,624
5	Atlanta TRACON, GA.....	907	955	1,433
6	Chicago TRACON, IL.....	889	917	1,365
7	Dallas/Ft Worth, TRACON, TX.....	766	788	1,185
8	Houston TRACON, TX.....	657	639	959
9	Miami International, FL.....	646	639	943
10	Denver TRACON, CO.....	562	553	823
11	Orlando International, FL.....	494	504	747
12	Phoenix TRACON, AZ.....	471	478	716
13	Las Vegas TRACON, NV.....	459	468	702
14	Philadelphia International, PA.....	448	465	694
15	Boston TRACON, MA.....	441	468	693
16	Charlotte/Douglas Int'l, NC.....	441	432	649
17	Detroit TRACON, MI.....	420	429	634
18	San Juan CERAP, PR.....	377	428	620
19	Minneapolis TRACON, MN.....	390	396	586
20	Honolulu Control Facility, HI.....	253	379	548
21	Tampa International, FL.....	358	367	540
22	Seattle/Tacoma TRACON, WA.....	364	357	529
23	Salt Lake City TRACON, UT.....	331	346	508
24	Covington/Cincinnati Int'l, KY.....	283	307	458
25	Memphis International, TN.....	283	298	443

\* Preliminary

Source: APO-130  
 (202) 267-3350

As of: 09/23/08

### 50 Busiest Radar Approach Control Facilities

CY 2007 Rank	Facilities/State	Instrument Ops (000's)		
		Jan-Aug 2008*	Jan-Aug 2007	Jan-Dec 2006
26	Jacksonville Int'l, FL.....	268	281	413
27	St Louis TRACON, MO.....	264	274	407
28	San Antonio Int'l, TX.....	270	246	385
29	Palm Beach International, FL.....	220	243	350
30	Cleveland Hopkins Int'l, OH.....	217	230	342
31	Port Columbus Int'l, OH.....	202	225	341
32	Daytona Beach Int'l, FL.....	234	228	340
33	Portland TRACON, OR.....	224	228	333
34	Pittsburgh International, PA.....	201	226	331
35	Corpus Christi, TX.....	211	226	328
36	Raleigh-Durham Int'l, NC.....	202	216	326
37	Austin, TX.....	219	202	316
38	Kansas City International, MO.....	199	205	310
39	Indianapolis International, IN.....	202	210	310
40	Anchorage TRACON, AK.....	201	214	307
41	Pensacola TRACON, FL.....	202	208	304
42	Nashville International, TN.....	181	202	300
43	Milwaukee/Gen Mitchell Int'l, WI.....	214	202	298
44	Tucson TRACON, AZ.....	194	193	287
45	Norfolk International, VA.....	163	187	274
46	Dayton International, OH.....	164	188	273
47	Yankee TRACON, CT.....	171	180	267
48	Louisville Int'l/Standiford, KY.....	154	169	252
49	Albuquerque Int'l, NM.....	148	165	247
50	Fresno Yosemite Int'l, CA.....	156	160	239



## Automated Flight Service Stations Activity

CY 2007 Rank	AFSS/State	Flight Services (000's)		
		Jan-Sept 2008*	Jan-Sept 2007	Jan-Dec 2007
1	Miami AIFSS, FL**	0	514	514
2	St Petersburg, FL**	0	405	405
3	Kenai, AK	263	301	372
4	Islip/New York, NY***	0	329	353
5	Bridgeport, CT***	0	249	249
6	Williamsport, PA***	0	233	233
7	Seattle, WA**	0	215	215
8	Princeton, MN**	0	210	210
9	Albuquerque, NM**	0	192	192
10	Washington Hub	2795	188	188
11	Prescott Hub, AZ**	0	188	188
12	San Juan, PR IAFSS***	0	149	179
13	Raleigh, NC**	0	173	173
14	Anderson, SC***	0	157	157
15	Fort Worth Hub, TX**	0	157	157
16	Columbia, MO**	0	153	153
17	Cleveland, OH***	0	151	151
18	Conroe, TX***	0	151	151
19	Kankakee, IL**	0	148	148
20	Gainesville, FL***	0	148	148
21	Fairbanks, AK	116	117	147
22	Denver, CO**	0	142	142
23	Macon, GA**	0	129	129
24	McMinnville, OR***	0	125	125
25	Juneau, AK	82	104	125
26	McAlester, OK***	0	121	121
27	Cedar City, UT***	0	118	118
28	San Diego, CA**	0	116	116
29	Bangor, ME***	0	114	114
30	De Ridder, LA***	0	108	108

\* Preliminary  
 \*\*Closed Reopen(ed)(ing) (No longer providing data)  
 \*\*\*Closed  
 Source: ATX-400  
 (202) 385-4734  
 Automated International Flight Service Station--AIFSS  
 As of 10/01/08



### Automated Flight Service Stations Activity

	Flight Services (000's)		
	Jan-Sept	Jan-Sept	Jan-Dec
	2008*	2007	2007
31 Louisville, KY***	0	102	102
32 Wichita, KS***	0	99	99
33 San Angelo, TX***	0	95	95
34 Jonesboro, AR***	0	92	92
35 Lansing, MI**	0	91	91
36 Green Bay, WI***	0	90	90
37 Rancho Murieta, CA***	0	89	89
38 Oakland, CA**	0	87	87
39 Nashville, TN**	0	85	85
40 Fort Dodge, IA***	0	85	85
41 Grand Forks, ND***	0	81	81
42 Honolulu, HI**	0	80	80
43 Hawthorne, CA***	0	79	79
44 St. Louis, MO***	0	79	79
45 Jackson, TN***	0	78	78
46 Dayton, OH***	0	75	75
47 Elkins, WV***	0	66	66
48 Reno, NV***	0	63	63
49 Boise, ID***	0	62	62
50 Huron, SD***	0	57	57
51 Buffalo, NY***	0	46	46
52 Burlington, VT***	0	41	41
53 Great Falls, MT***	0	37	37
54 Casper, WY***	0	36	36
55 Altoona, PA***	0	34	34
56 Terre Haute, IN***	0	31	31
57 Columbus, NE***	0	26	26
58 Greenwood, MS***	0	24	24
59 Riverside, CA***	0	19	19
60 Anniston, AL***	0	11	11

## Airports

### Number of U.S. Airports (As of December 31)

	2007	2006	2005
<b>Total Airports</b> .....	20,341	19,983	19,854
Airports.....	13,822		
Heliports.....	5,708		
Seaplane Bases.....	527		
Gliderports.....	35		
Stolports.....	87		
Balloonports.....	15		
Ultralight Flightparks.....	147		
<b>Total Civil Public Use Airports</b> .....	5,221	5,233	5,270
Civil Public Use Part 139.....	585		
Civil Public Use Non-Part 139.....	4,656		
Civil Public use airports abandoned.....	18	27	14
Newly Established Public Use.....	9		
<b>Total Civil Private Use Airports</b> .....	14,839	14,757	14,584
Civil Private use airports abandoned.....	297	133	115
Newly Established Private Use.....	274		
<b>Military Airports</b> .....	281		

Note: Format change with 2007 data  
 As of: 04/30/08

**National Airspace Total System Delays**

Year	Jan	Feb	Mar	Apr	May	Jun	Jul	Aug	Sep	Oct	Nov	Dec	YTD Total
2008*	40,069	46,963	43,869	43,229	44,214	68,565	64,627	50,108					401,644
2007	32,927	30,071	39,558	39,340	44,055	58,824	54,689	52,875	38,896	55,140	48,880	47,931	541,186
2006	29,463	24,705	37,218	35,132	40,869	48,096	47,606	46,547	48,092	51,053	43,482	39,797	491,860
2005	32,121	30,176	34,633	25,867	30,920	48,922	58,471	45,328	32,949	34,221	34,273	29,766	437,667
2004	28,104	32,274	34,001	22,489	60,800	52,121	46,894	43,770	30,412	37,271	35,234	32,446	456,766

Delays of 15 minutes or longer  
 \* Preliminary information that is subjected to change

As of: 09/30/08

Source: ATT-220  
 (703) 904-4470

17

## Aircraft

### U.S. Air Carrier Activity

	CY 2007	CY 2006	CY 2005
<b>Type of Carrier</b>			
Domestic, flag, supplemental, and cargo air carriers.....	7,449	7,516	7,668
Commuter Air Carriers and Air Taxis.....	11,483	11,554	11,571
<b>Total Number of Aircraft*</b> .....	18,932	19,070	19,239
<b>Type of Aircraft</b>			
Jet.....	9,999	9,939	9,880
Turboprop.....	2,817	2,870	2,994
Piston.....	3,410	3,583	3,745
Rotary Wing.....	2,705	2,678	2,620
<b>Air Carrier Traffic Statistics*</b>			
<b>(Millions)*</b>			
Passenger miles flown.....	836,335	806,306	794,405
Passenger enplanements.....	767	745	747
Ton miles.....	123,511	120,587	118,743
Aircraft miles flown.....	8,315	8,146	8,235
<b>Passenger load factor*</b>			
Domestic.....	79.8%	79.2%	77.2%
International.....	80.4%	79.5%	79.2%

\* Source: Vital Information System

\* Includes domestic and international scheduled and non-scheduled service, domestic, flag, supplemental, cargo air carriers and commuters

\* Proportion of aircraft seating capacity that is sold.

As of: 10/01/08

Source: AFS-40

(202) 385-4514

\*BTS (K-25)

(202) 366-8513

**U.S. General Aviation  
 and Air Taxi Activity**

**(Calendar Years)**

	Estimated Active Aircraft (thousands)		Estimated Hours Flown (Millions)	
	2006	2005	2006	2005
<b>Total</b> .....	221.9	224.4	27.7	27.0
<b>By Type Aircraft</b>				
Piston.....	163.7	167.6	16.5	16.4
Turboprop.....	8.1	7.9	2.2	2.1
Jet.....	10.4	9.8	4.1	3.8
Rotary Wing.....	9.2	8.7	3.4	3.1
Experimental.....	23.0	23.6	1.2	1.3
Light Sport.....	1.3	0.2	0.1	0.0
Other.....	6.3	6.5	0.2	0.3
<b>By Type Flying</b>				
Corporate.....	11.0	10.6	3.1	3.1
Business.....	24.4	25.5	3.2	3.2
Personal.....	149.0	151.4	9.1	9.3
Instructional.....	14.3	13.4	4.3	3.6
Aerial Application.....	3.4	3.5	0.9	1.0
Aerial Observation.....	4.4	4.7	1.2	1.3
Aerial Other.....	0.8	0.8	0.2	0.1
External Load.....	0.2	0.2	0.1	0.1
Other Work.....	0.7	0.7	0.2	0.2
Sightseeing.....	0.9	0.9	0.2	0.2
Air Tours.....	0.4	0.6	0.3	0.4
Air Taxi.....	7.4	6.9	2.7	2.9
Air Medical Services.....	1.7	1.4	0.8	0.7

As of: 11/30/07

AAI-220  
 (202) 267-8659

**Aircraft Certification Service  
Aircraft Certification Mission and  
Program Files**

	FY 2007	FY 2006
Type Certificates/Supplemental Type Certificates Issued.....	1,912	1,346
Other Design Approvals Issued.....	2,941	12,894
Production Approvals (Including Amendments) Issued.....	2,499	2,935
Airworthiness Certificates Issued.....	788	946
New Airworthiness Directives (AD) Issued.....	1,036	414
New Designees (Representative of the Administrator) Appointed.....	374	342
Total Active Designees.....	3,669	4,071

As of: 03/15/08

Source: AIR-530  
202-267-3027

## Industry Trends

### Scheduled U.S. Air Carrier Traffic\* and Financial\*\* Trends (In Billions)

	FY 2007	FY 2006	Numerical Change	Percent Change
<b>TRAFFIC</b>				
<b>ASM'S</b>				
Majors.....	947.18	927.30	19.88	2.1
Nationals.....	67.29	63.63	3.66	5.7
Regionals.....	14.26	10.55	3.70	35.1
<b>Totals.....</b>	<b>1028.73</b>	<b>1001.48</b>	<b>27.23</b>	<b>2.7</b>
<b>RPM's</b>				
Majors.....	760.05	735.79	24.25	3.3
Nationals.....	51.97	48.37	3.60	7.4
Regionals.....	9.80	6.75	3.04	45.1
<b>Totals.....</b>	<b>821.82</b>	<b>790.91</b>	<b>30.89</b>	<b>(3.8)</b>
<b>Load Factor (in percent)</b>				
Majors.....	80.2%	79.3%	0.9	
Nationals.....	77.2%	76.0%	1.2	
Regionals.....	68.7%	64.0%	4.7	
<b>Totals.....</b>	<b>79.9%</b>	<b>79.0%</b>	<b>0.9</b>	
<b>FINANCIAL</b>				
<b>Revenues</b>				
Majors.....	\$155.66	\$148.69	\$6.97	4.7
Nationals.....	\$13.01	\$13.50	-\$0.49	(3.6)
Regionals.....	\$1.16	\$0.85	\$0.31	36.5
<b>Totals.....</b>	<b>\$169.83</b>	<b>\$163.04</b>	<b>\$6.79</b>	<b>4.2</b>
<b>Expenses</b>				
Majors.....	\$148.32	\$143.64	\$4.67	1.9
Nationals.....	\$12.55	\$13.01	-\$0.46	(2.6)
Regionals.....	\$1.24	\$0.83	\$0.41	48.5
<b>Totals.....</b>	<b>\$160.11</b>	<b>\$157.48</b>	<b>\$2.62</b>	<b>1.7</b>
<b>Operating Profit/Loss</b>				
Majors.....	\$9.34	\$5.05	\$4.30	
Nationals.....	\$0.46	\$0.49	(\$0.03)	
Regionals.....	(\$0.08)	\$0.02	(\$0.10)	
<b>Totals.....</b>	<b>\$9.72</b>	<b>\$5.56</b>	<b>\$4.17</b>	

\*Effective FY 2007, DOT mandated small certificated and commuter air carriers (airlines with aircraft size less than 90 seats) report traffic results on DOT Form 41. Financial results for these carriers are reported on DOT Form 2980 and are excluded from this report.

Source: APO-110

As of: 03/30/08

21

(202) 493-4236

## Aviation Forecasts

Estimated Forecast  
 FY 2007 FY 2009

<b>FAA FACILITY WORKLOAD</b>		
<b>Aircraft Handled by FAA ARTCC's (Millions)</b>		
Air Carrier.....	25.0	27.5
Air Taxi/Commuter.....	9.7	10.0
General Aviation.....	8.3	9.1
Military.....	3.8	3.0
Total.....	46.8	51.0
<b>Operations Logged by FAA/Contract Towers (Millions)</b>		
Airport.....	61.1	65.0
Instrument.....	45.4	47.9
<b>CIVIL AVIATION ACTIVITY</b>		
<b>Certificated Route Air Carrier</b>		
Revenue Passenger Enplanements (Millions).....	605.6	677.1
Revenue Passenger Miles (Billions).....	749.4	876.9
Air Carrier Aircraft.....	4,980	5,511
<b>General Aviation Estimated</b>		
Hours Flown (Millions)*.....	27.9	31.3
Active Aircraft (Thousands)*.....	225.0	238.1
<b>ESTIMATED FUEL CONSUMED BY U.S. DOMESTIC CIVIL AVIATION (Millions of Gallons)</b>		
<b>Jet Fuel</b>		
Air Carrier.....	19,583	22,778
General Aviation.....	1,650	2,387
<b>Aviation Gas</b>		
Air Carrier.....	2	2
General Aviation.....	348	355
Active Pilots (Thousands)*.....	590,349	591,830

\*Calendar Year

As of: 03/30/08

Source: APO-110  
 (202) 493-4238



**U.S. Commercial Space Transportation  
FAA Licensed Activity**

	CY 2008 (Projected)	CY 2007	CY 2006
<b>Licensed Commercial Launches</b>			
<b>TOTAL</b>	<b>13</b>	<b>4</b>	<b>7</b>
<b>Number of Orbital Launches</b>	13	4	7
<b>Number of Suborbital Launches</b>	0	0	0
<b>By Launch Vehicle Type</b>			
Delta II, IV (Boeing Company)	3	3	1
Atlas V (Lockheed Martin)	1	0	1
Zenit 3SL (Sea Launch)	6	1	5
Falcon 1 (SpaceX)	2	0	0
Pegasus XL (Orbital Sciences)	1	0	0
<b>By Launch Site (Federal)</b>			
Cape Canaveral AF Station, FL	2	0	2
Vandenberg AFB, CA	2	3	0
Kwajalein / Marshall Islands	3	0	0
<b>By Launch Site (Commercial)</b>			
Pacific Ocean	6	1	5
Other Commercial	0	0	0
<b>Experimental Permit Launches</b>			
<b>TOTAL (not part of license total)</b>	5 to 10	9	6

Source: AST  
(202) 267-7989

As of: 6/13/08

United States Commercial Space Launch Schedule, CY 2008 (Launch dates are subject to change)		
Payload (Operator) Payload Type	Launch Company/ Vehicle	Launch Date/ Launch Site (States)
Tharaja D3 (United Arab Emirates) Communications	Sea Launch Zenit 3SL	January 10, 2008 Pacific Ocean Platform (Successful)
DirecTV II (U.S.) Communications	Sea Launch Zenit 3SL	March 18, 2008 Pacific Ocean Platform (Successful)
KO GT (U.S.) Communications	Lockheed Martin (Lockheed Martin Commercial Launch Services) Atlas V	April 14, 2008 Cape Canaveral Air Force Station, FL (Successful)
CINOPS (U.S.) Communications	Orbit Sciences Pegasus XL	April 16, 2008 Reagan Test Site, Marshall Islands (Successful)
Galaxy II (U.S.) Communications	Sea Launch Zenit 3SL	May 21, 2008 Pacific Ocean Platform (Successful)
Freelancer (U.S.) Demonstration	SpaceX Falcon 1	June 2008 Kauai, Hawaii, Marshall Islands
EchoStar X (U.S.) Communications	Sea Launch Zenit 3SL	July 2008 Pacific Ocean Platform
GeoEye 1 (U.S.) Remote Sensing	The Boeing Company (Boeing Launch Services) Delta II	August 2008 Vandenberg Air Force Base, CA
Ratsatop (Malaysia) Remote Sensing	SpaceX Falcon 1	3 <sup>rd</sup> Quarter 2008 Kauai, Hawaii, Marshall Islands
Unannounced (unannounced) Communications	Sea Launch Zenit 3SL	3 <sup>rd</sup> Quarter 2008 Pacific Ocean Platform
COSMO Skyview 2 (Italy) Remote Sensing	The Boeing Company (Boeing Launch Services) Delta II	October 2008 Vandenberg Air Force Base, CA
Unannounced (unannounced) Communications	Sea Launch Zenit 3SL	4 <sup>th</sup> Quarter 2008 Pacific Ocean Platform
GOES-O (U.S.) Remote Sensing	The Boeing Company (United Launch Alliance) Delta IV	4 <sup>th</sup> Quarter 2008 Cape Canaveral Air Force Station, FL

As of 5/13/08

Source: AST  
(202) 267-7993

**Active Pilots and Nonpilots  
 (As of 31 December)**

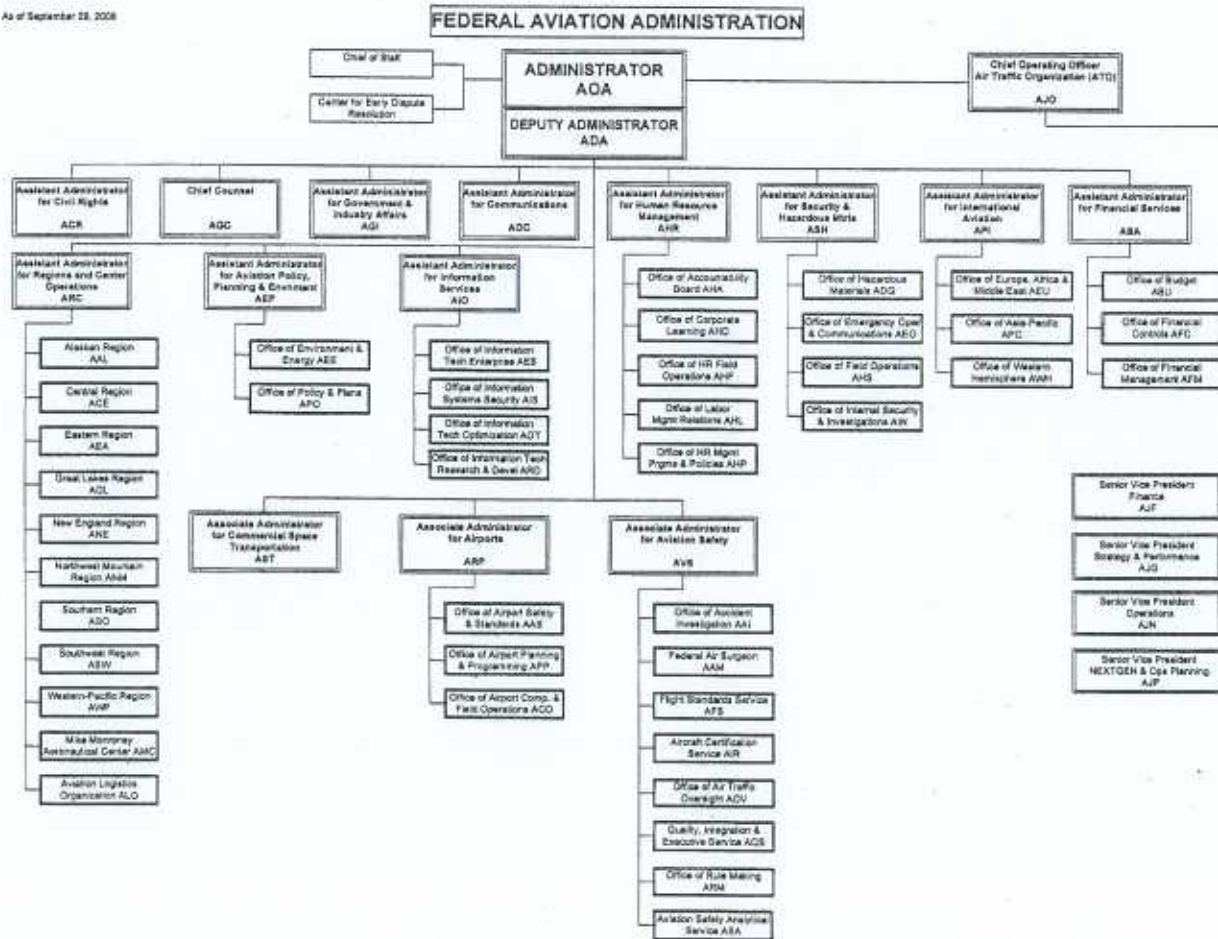
	2007		2006	
	Total	Women	Total	Women
<b>Pilot-Total.....</b>	<b>890,349</b>	<b>35,784</b>	<b>897,109</b>	<b>36,101</b>
Student.....	84,339	9,559	84,866	9,640
Private.....	211,096	13,694	216,233	14,111
Commercial.....	115,127	7,101	117,610	7,236
Airline Transport.....	143,983	5,349	141,936	5,071
<b>Nonpilot-Total.....</b>	<b>666,569</b>	<b>138,452</b>	<b>656,227</b>	<b>128,192</b>
Mechanic.....	322,882	6,524	323,097	6,345
Repairmen.....	40,277	2,193	40,329	2,180
Ground Instructor.....	74,544	5,726	74,849	5,669
Flight Engineer.....	54,394	1,901	56,952	1,920
Flight Attendant.....	118,426	100,630	134,874	108,559
<b>Flight Instructor.....</b>	<b>92,175</b>	<b>6,232</b>	<b>91,343</b>	<b>6,158</b>

As of 05/31/08

25

**Airmen**

As of September 28, 2008



U. S. DEPARTMENT OF TRANSPORTATION  
 Federal Aviation Administration  
**FAA REGIONAL BOUNDARIES**  
 Including Locations of Regional Headquarters and Centers



## FAA Resources

### FAA Employment (Permanent Employees)<sup>1</sup>

	FY08	FY07
<b>Line of Business</b>		
Air Traffic Organization (ATO).....	33,593	33,090
Aviation Safety (AVS).....	7,013	6,842
Airports (ARP).....	479	471
Comm. Space Transportation (AST)....	61	56
Staff Offices**.....	4,126	3,964
<b>Total</b>	<b>45,272</b>	<b>44,423</b>
<b>Region/Center/Headquarters (included in above total)</b>		
Aeronautical Center.....	3,317	3,224
Alaskan.....	896	1,145
Central.....	2,134	2,182
Eastern.....	4,635	4,612
Great Lakes.....	5,603	5,569
New England.....	1,431	1,451
Northwest Mountain.....	4,058	3,914
Southern.....	6,659	6,600
Southwest.....	4,878	4,756
Western-Pacific.....	4,534	4,580
Washington Headquarters <sup>1</sup> .....	3,395	5,363
Washington Headquarters (Field).....	2,510	n/a
Technical Center.....	1,020	1,047

<sup>1</sup> Full time permanent and part time permanent employees only.

<sup>2</sup> Washington Headquarters employees physically located in Orville/Wilbur Wright Buildings and surrounding areas.

\*\* Staff Offices include: ABA, ACR, ADA, AEP, AGC, AGE, AHR, AIO, ADA, AOC, APO, ARC, ASH.

Disclaimer: This is a statistical snapshot of the workforce demographics. The use of this data in any employment decision is PROHIBITED without the express written authorization of the Deputy Chief Counsel for Operations, AGC-3.

As of: 09/30/08

Source: AHP-100  
 (202) 267-8257

30

**FAA Percent Minority & Female Employment<sup>1</sup>**

Lines of Business/Region/Center/Headquarters	% Minority		% Female	
	FY08	FY07	FY08	FY07
Air Traffic Organization (ATO) .....	20.0	20.0	21.0	20.0
Aviation Safety (AVS).....	20.0	19.0	27.0	27.0
Airports (ARP).....	29.0	29.0	40.0	40.0
Commercial Space Transportation (AST).....	39.0	41.0	36.0	34.0
Staff Offices .....	32.0	32.0	53.0	53.0
<b>Total</b> .....	<b>22.0</b>	<b>21.0</b>	<b>25.0</b>	<b>24.0</b>
Aeronautical Center.....	22.0	22.0	38.0	39.0
Alaskan.....	16.0	15.0	22.0	20.0
Central.....	13.0	14.0	22.0	23.0
Eastern.....	16.0	16.0	16.0	16.0
Great Lakes.....	11.0	11.0	20.0	20.0
New England.....	8.0	8.0	21.0	21.0
Northwest Mountain.....	15.0	14.0	24.0	24.0
Southern.....	25.0	24.0	21.0	19.0
Southwest.....	25.0	24.0	21.0	21.0
Western-Pacific.....	32.0	31.0	39.0	20.0
Washington Headquarters <sup>2</sup> .....	31.0	31.0	39.0	40.0
Technical Center.....	22.0	21.0	32.0	32.0

<sup>1</sup> All FAA employees.

<sup>2</sup> Washington Headquarters employees physically located in Onizuka/Walter Wright Buildings and surrounding areas.

As of: 09/30/08

Source: AHP-100  
 (202) 267-8257



**Major Work Force Employment**

	Employment				
	FY06	FY07	FY08	%Chg. FY08 - FY07	Actual Change
<b>Controller Work Force*</b>					
Controllers	15,308	14,874	14,618	3.0%	434
Traffic Management Coordinators	556	565	613	-1.6%	-9
Operations Supervisors	1,857	1,788	1,787	3.9%	69
<b>Flight Service Stations (FSS)</b>					
Field Maintenance	171	181	184	-5.5%	-10
PASS Technical	6,088	6,090	6,201	0.0%	-2
NATCA Engineers	1,191	909	1,061	31.0%	282
1st Line Supervisors	672	529	534	27.0%	143
<b>Airports Work Force</b>					
Aircraft Certification**	479	471	466	1.1%	-5
Flight Standards Work Force**		1,179	1,180	-0.1%	-1
Flight Standards Work Force**		4,825	4,867	-0.9%	-42

\* Includes all employees in pay status and Academy trainees  
 Note: FSS employment reduction due to A-76 effective 10/04/05.

\*\*In FY 07, AVS realigned 29 Aircraft Certification and 144 Flight Standards Information Technology Analysts into the Office of Quality, Integration and Executive Service.

As of: 09/30/08  
 Source: ATO-F, (202) 267-9123  
 Source: AQS-400, (202) 267-8990



**Labor Relations**

	BARGAINING UNITS	LABOR AGREEMENTS	EMPLOYEES REPRESENTED
<b>Unions.....</b>	<b>46</b>	<b>29</b>	<b>34,969</b>
AFGE.....	10	6	1,737
AFSCME (HQ).....	4	1	1,743
LIUNA.....	1	1	169
NAGE.....	3	3	321
NATCA.....	15	9	18,895
NFFE.....	3	2	631
PAACE.....	5	3	381
PASS.....	5	4	11,082

AFGE --American Federation of Government Employees  
 AFSCME --American Federation of State, County, and Municipal Employees  
 LIUNA --Laborer's International Union of North America  
 NAGE --National Association of Government Employees  
 NACTA --National Air Traffic Controllers Association  
 NFFE --National Federation of Federal Employees  
 PAACE --Professional Association of Aeronautical Center Employees  
 PASS --Professional Aviation Safety Specialists

Source: AHL-400  
 (202) 267-3548

As of: 09/30/08

**FAA Finances**  
 (In Millions of Dollars)

	FY 2007 <sup>2</sup>	FY 2008	FY 2009
	Actual	Actual	Request
<b>Budget Authority (BA)</b>			
Grants-In-Aid (Obligation Lim/Approp).....	3,515	3,515	2,750
Research, Engineering, & Development.....	130	147	171
Facilities and Equipment.....	2,518	2,514	
Operations.....	8,374	8,740	
Safety & Operations <sup>1</sup> .....			2,052
Air Traffic Organization <sup>1</sup> .....			9,670
<b>Total</b> .....	<b>14,537</b>	<b>14,915</b>	<b>14,643</b>
<b>Obligations Incurred—Operations</b>			
<b>Appropriation by Line of Business</b>			
Air Traffic Organization (ATO).....	6,755	6,965	7,079
Aviation Safety (AVS).....	1,007	1,087	1,131
Commercial Space Transportation (AST).....	11	12	14
Staff Offices (SO).....	625	677	775
<b>Total</b> .....	<b>8,398</b>	<b>8,741</b>	<b>8,999</b>
<b>Airport Grant Obligations (NET)</b>			
Primary Airports & Cargo.....	977	959	700
States/Territories/Insular/Alaska Supp.....	702	700	619
Carryover Entitlements.....	448	468	448
Discretionary Fund.....	809	786	862
Small Airport Fund.....	467	482	0
<b>Total</b> .....	<b>3,402</b>	<b>3,395</b>	<b>2,628</b>
<b>Total FAA Outlays</b> .....	<b>14,153</b>	<b>14,943</b>	<b>16,089</b>
<b>Trust Fund Receipts from Excise Taxes and Interest</b>			
Transportation of Persons by Air.....	8,197	8,440	8,559
Transportation of Property.....	574	521	647
Use of International Air Facilities.....	2,136	2,452	2,444
Aviation Fuel Commercial Use.....	805	616	515
Aviation Fuel (Other Than Gas).....	(225)	(30)	365
Aviation Gasoline.....	48	39	40
<b>Total Tax Revenue</b> .....	<b>11,535</b>	<b>12,048</b>	<b>12,570</b>
Revenue Refund.....	(67)	(56)	
<b>Net Tax</b> .....	<b>11,468</b>	<b>11,992</b>	
Interest revenue.....	472	433	470
<b>Total Tax &amp; Interest Revenue</b> .....	<b>11,940</b>	<b>12,425</b>	<b>13,040</b>

<sup>1</sup> New account proposed in the FY 2009 President's Budget. Includes both traditional Operations and Facilities & Equipment Funds.  
<sup>2</sup> Includes Section 111 funding.  
 As of: 10/31/08

Source: ABU-100  
 (202) 267-5451

**FAA NAS Operational Facilities**  
**(As of October 1)**

	2008	2007	2006
<b>NAS Operational Facilities*</b> .....	<b>59,833</b>	<b>59,140</b>	<b>40,639</b>
Communications.....	18,991	18,823	14,273
Automation.....	1,360	1,360	3,895
Infrastructure.....	18,547	17,848	
Mission Support.....	4,127	4,173	
Navigation.....	12,347	12,362	11,033
Surveillance.....	1,757	1,900	1,804
Weather.....	2,582	2,674	3,550
<b>Air Traffic Control Facilities*</b>			
Air Route Traffic Control Center.....	21	21	21
Airport Traffic Control Tower.....	512	512	517
Flight Service <sup>3</sup> .....	33	71	75
Flight Service Stations.....	30	47	16
Automated Flight Service Stations...	3	24	60

\* Includes All Responsibility Codes

\* Included in NAS operational facilities.

<sup>3</sup> Flight Service include Flight Service Stations and Automated Flight Service Stations.

As of: 10/01/08

Source: AOP-200  
 (202) 267-5288

## FAA Officials

### Washington Headquarters

Routing Symbol	Officials
<b>AOA</b>	<b>Administrator</b> <b>Robert A. Sturgell (A), 202-267-3111</b> Jana Murphy, Chief of Staff, 202-267-7416 Vacant, Senior Counsel to AOA, 202-267-7417
<b>ADA</b>	<b>Deputy Administrator</b> <b>Vacant, 202-267-8111</b> Shirley Miller, Acting, Senior Advisor, 202-267-6063
<b>AJO</b>	<b>Chief Operating Officer, Air Traffic Organization</b> <b>Henry P. Krakowski, 202-493-5602</b>
<b>AJF*</b>	Finance Business Unit Senior Vice President, Eugene D. Juba, 202-267-3022
<b>AJP*</b>	NextGen and Operations Planning Business Unit Senior Vice President, Victoria Cox, 202-267-7111
<b>AJG*</b>	Strategy and Performance Business Unit Senior Vice President, John Pipes, 202-493-4777
<b>AJN*</b>	Operations Business Unit Senior Vice President, Richard L. Day, 202-267-7724
<b>ABA</b>	<b>Assistant Administrator for Financial Services</b> <b>Ramesh K. Punwani, CFO, 202-267-9105</b> Deputy, John F. Hennigan, 202-267-8928
<b>ABU</b>	Office of Budget Director, Carol Rose, 202-267-8010
<b>AFC</b>	Office of Financial Controls Director, Carl Burns, 202-267-7140
<b>AFM*</b>	Office of Financial Management Vacant, 202-267-3018
<b>ACR</b>	<b>Assistant Administrator for Civil Rights</b> <b>Fanny Rivera, 202-267-3254</b> Deputy, Barbara A. Edwards, 202-267-3264
<b>AEP*</b>	<b>Asst. Admin. for Aviation Policy, Planning &amp; Environment</b> <b>Nancy LoBue, Acting, 202-267-3927</b> Deputy, Lourdes Maurice, Acting, 202-493-4293

\* Updated this issue  
 As of: 11/01/08

Source: ABA-1  
 (202) 267-9105

## FAA Officials

### Washington Headquarters--(Cont)

Routing Symbol	Officials
AEE	Office of Environment and Energy Director, Carl Burleson, 202-267-3576
APC*	Office of Aviation Policy and Plans Director, Nan Shellabarger, 202-267-3274
AGC	<b>Chief Counsel</b> <b>Kerry B. Long, 202-267-3222</b> Deputy Chief Counsel for Policy and Adjudication James W. Whilow, 202-267-3773 Deputy Chief Counsel for Operations Marc L. Warren, 202-267-3773
AGI*	<b>Asst. Administrator for Government &amp; Industry Affairs</b> <b>Chris Brown, 202-267-3277</b> Deputy, Vacant, 202-267-8211
AHR	<b>Asst. Administrator for Human Resource Management</b> <b>Ventris C. Gibson, 202-267-3456</b> Deputy, Joseph N. Meisice, 202-267-3579
AHA	Office of the Accountability Board Executive Director, Maria Fernandez-Greczmiel, 202-267-3065
AHD	Office of Corporate Learning Executive Director, Darlene Freeman, 202-267-9041
AHF	HR Field Operations Executive Director, Karen Johnson, 847-294-7315
AHL	Office of Labor Management Relations Executive Director, Mehin Harris, 202-267-3979
AHP	Office of Human Resources Management Programs and Policies Executive Director, Sue A. Engelhardt, 202-267-3850
AIO	<b>Assistant Administrator for Information Services</b> <b>David M. Bowen, CIO, 202-493-4570</b>
AIS	Office of Information Systems Security Director, Michael F. Brown, 202-267-7104
AOT*	Office of Information Technology Optimization Director, Vacant, 202-493-4570
AES	Office of Information Technology Enterprise Director, Robert Rovinsky, 202-493-4019
ARD	Office of Information Technology Research and Development Chief Technology Officer, Diana Young, Acting, 202-385-8056
AOC*	<b>Assistant Administrator for Communications</b> <b>Lynn Tierney, Acting, 202-267-3883</b> Deputy, Communications, John Hambel, 202-267-3883 Deputy, External Communications, Laura Brown, 202-267-3883 Deputy, Internal Communications, Gerald Lavey, 202-267-9499
API	<b>Asst. Administrator for International Aviation</b> <b>Di Reimold (A), 202-385-8900</b> Deputy, Di Reimold, 202-385-8900
ARC	<b>Assistant Administrator for Regions/Center Operations</b> <b>Ruth Leverenz, 202-267-7369</b> Deputy, Paula Lewis, 202-267-7369
ALO	Aviation Logistics Organization Director, Mamie Mallory, 202-267-7369

**FAA Officials**

**Washington Headquarters--(Cont.)**

Routing Symbol	Officials
ASH	Lynne A. Osmus, 202-267-7211 Deputy, Claudio Manno, 202-267-7211
ADG	Office of Hazardous Materials Director, Christopher Bonanti, 202-267-9864
AEO	Office of Emergency Operations, Communications and Investigations Director, Chris Rocheleau, 202-267-8075
AHS	Office of Field Operations Director, Thomas D. Ryan, 202-267-7211
AIN	Office of Security Director, Bruce Herron, 202-267-7714
ARP	Associate Administrator for Airports D. Kirk Shaffer, 202-267-9471 Deputy, Catherine M. Lang, 202-267-8738
AAS	Office of Airport Safety and Standards Director, Michael I. O'Donnell, 202-267-3053
ACO	Office of Airport Compliance and Field Operations Director, Randolf S. Fietz, 202-267-3085
APP	Office of Airport Planning & Programming Director, Benito DeLeon, 202-267-8775
AST	Dr. George C. Nield, 202-267-7793 Deputy, James E. VanLaak, 202-267-7848
AVS	Associate Administrator for Aviation Safety Nicholas A. Sabatini, 202-267-3131 Deputy, Peggy Gilligan, 202-267-7804
AAI*	Office of Accident Investigation Director, KC Yanamura, 202-267-9612
AAM	Office of Aviation Medicine Director, Frederick Tilton, MD, 202-267-3535
AFS	Flight Standards Service Director, James Ballough, 202-267-8237
AIR	Aircraft Certification Service Director, John J. Hickey, 202-267-8235
AOV	Office of Air Traffic Oversight Director, Anthony Ferrante, 202-267-5202
AQS	Quality, Integration and Executive Service Director, Tina Amerishn (A), 202-493-5717
ARM	Office of Rulemaking Director, Pamela Hamilton-Powell, 202-267-9677
ASA	Office of Aviation Safety Analytical Services Director, Jay J. Hardee, 202-267-9171
Duty Officer	(202) 267-3333

**FAA Officials**  
**Major Field Organizations**

---

<b>Routing Symbol</b>	<b>Officials</b>
<b>AAL</b> .....	<b>Alaskan Region, Regional Administrator</b> <b>Michael A. Cirillo, 907-271-5645</b> 222 West 7th Avenue, Box 14 Anchorage, Alaska 99513-7587 Duty Officer, 907-271-5936
<b>ACE</b> .....	<b>Central Region, Regional Administrator</b> <b>Christopher Blum, 816-329-3050</b> 601 Locust Kansas City, Missouri 64106 Duty Officer, 816-329-3000
<b>ACT</b> .....	<b>William J. Hughes Technical Center, Director</b> <b>Wilson N. Felder, Ph.D., 609-485-6641</b> Atlantic City International Airport New Jersey 08405 Duty Officer, 609-485-6482
<b>AEA*</b> .....	<b>Eastern Region, Regional Administrator</b> <b>Pearlis Johnson, Acting, 718-553-3000</b> 1 Aviation Plaza 159-30 Rockaway Blvd. Jamaica, New York 11434-4809 Duty Officer, 718-553-3100
<b>AGL</b> .....	<b>Great Lakes Region, Regional Administrator</b> <b>Barry D. Cooper, 847-294-7294</b> 2300 East Devon Avenue Des Plaines, Illinois 60018 Duty Officer, 847-294-8400
<b>AMC</b> .....	<b>Mike Monroney Aeronautical Center, Director</b> <b>Lindy Ritz, 405-954-4521</b> 6500 South MacArthur Oklahoma City, Oklahoma 73125 Duty Officer, 405-954-3583



**FAA Officials**  
**Major Field Organizations--(Cont.)**

<b>Routing Symbol</b>	<b>Officials</b>
<b>ANE</b> .....	<b>New England Region, Regional Administrator</b> <b>Amy Lind Corbett, 781-238-7020</b> 12 New England Executive Park Burlington, Massachusetts 01803 Duty Officer, 781-238-7001
<b>ANM</b> .....	<b>Northwest Mountain Region, Regional Administrator</b> <b>Dennis Roberts, 425-227-2001</b> 1601 Lind Avenue, S.W. Renton, Washington 98055-4056 Duty Officer, 425-227-2000
<b>ASO</b> .....	<b>Southern Region, Regional Administrator</b> <b>Doug Murphy, 404-305-5000</b> 1701 Columbia Avenue College Park, Georgia 30337 Duty Officer, 404-305-5180
<b>ASW*</b> .....	<b>Southwest Region, Regional Administrator</b> <b>Teresa Bruner, 817-222-5001</b> 2601 Meacham Blvd. Ft. Worth, Texas 76137-4298 Duty Officer, 817-222-5006
<b>AWP</b> .....	<b>Western-Pacific Region, Regional Administrator</b> <b>William C. Withycombe, 310-725-3550</b> 15000 Aviation Boulevard Hawthorne, California 90261 Duty Officer, 310-725-3300



## FAA Officials

### International Area Offices

Routing Symbol	Officials
AEU	Europe, Africa, & Middle East Area Office, Director Anthony Fazio, 011-322-508-2700 American Embassy, Brussels PSC 82 Box 002 APO AE 09724-1011
AWH*	Western Hemisphere Area Office, Director Phyllis Preston, Acting, 202-385-8869 8600 NW 36th Street Miami, FL 33166
APC	Asia-Pacific Area Office, Director Christopher Metts, 011-86-10-8532-1761 American Embassy 27 Napier Road Singapore 259508

FEDERAL AVIATION ADMINISTRATION  
FLIGHT PLAN 2008-2012

INCREASED SAFETY

**Goal:** *Achieve the lowest possible accident rate and constantly improve safety.*

1. Reduce commercial air carrier fatalities.
2. Reduce general aviation fatalities.
3. Reduce the risk of runway incursions.
4. Ensure the safety of commercial space launches.
5. Enhance the safety of FAA's air traffic systems.
6. Implement a Safety Management System (SMS).

**Performance Targets:**

Obj. 1 Cut the rate of fatalities per 100 million persons on board in half by FY 2025.

Obj. 2 Reduce the fatal accident rate per 100,000 flight hours by 10 percent over a 10-year period (2009-2018).

Obj. 2 By the end of FY 2009, reduce accidents in Alaska for general aviation and all Part 135 operations from the 2000-2002 average of 130 accidents per year to no more than 99 accidents per year.

Obj. 3 By FY 2010, reduce Category A and B (most serious) runway incursions to a rate of no more than 0.450 per million operations, and maintain or improve through FY 2013.

Obj. 3 By the end of FY 2013, reduce total runway incursions by 10 percent from the FY 2008 baseline.

Obj. 4 No fatalities, serious injuries, or significant property damage to the uninvolved public during licensed or permitted space launch and reentry activities.

As of 10/31/08

Source: APO-120  
(202) 267-3220

**INCREASED SAFETY Performance Targets (Continued)**

Obj. 5 Limit Category A and B (most serious) operational errors to a rate of no more than 1.95 per million activities by FY 2012 and maintain through FY 2013.

Obj. 6 By FY 2010, implement SMS in the Air Traffic Organization, Office of Aviation Safety, and Office of Airports. In FY 2012, implement SMS policy in all appropriate FAA organizations.

## GREATER CAPACITY

***Goal:*** *Work with local governments and airspace users to provide increased capacity and better operational performance in the United States airspace system that reduces congestion and meets projected demand in an environmentally sound manner.*

***Objectives:***

1. Increase capacity to meet projected demand and reduce congestion.
2. Increase reliability and on-time performance of scheduled carriers.
3. Address environmental issues associated with capacity enhancements.

***Performance Targets:***

Obj. 1 Achieve an average daily airport capacity for the 35 OEP airports of 103,068 arrivals and departures per day by FY 2011 and maintain through FY 2013.

Obj. 1 Achieve an average daily airport capacity for the 7 Metro areas of 39,484 arrivals and departures per day by FY 2011 and maintain through FY 2013.

Obj. 1 Commission nine new runway/taxiway projects, increasing the annual service volume of the 35 OEP airports by at least 1 percent annually, measured as a five-year moving average, through FY 2013.

Obj. 1 Sustain adjusted operational availability of 99.7 percent for the reportable facilities that support the 35 OEP airports through FY 2013.

Obj. 2 Achieve a NAS on-time arrival rate of 88 percent at the 35 OEP airports and maintain through FY 2013.

Obj. 3 Reduce the number of people exposed to significant noise by 4 percent per year through FY 2013, as measured by a three-year moving average.

Obj.3 Improve aviation fuel efficiency by another 1 percent over the FY 2006 level through FY 2009, and 1 percent each subsequent year through FY 2013 to 11 percent, as measured by a three-year moving average of the fuel burned per revenue mile flown

## INTERNATIONAL LEADERSHIP

**Goal:** *Increase the safety and capacity of the global civil aerospace system in an environmentally sound manner.*

**Objectives:**

1. Promote improved safety and regulatory oversight in cooperation with bilateral, regional, and multilateral aviation partners.
2. Promote seamless operations around the globe in cooperation with bilateral, regional, and multilateral aviation partners.

**Performance Targets:**

Obj. 1 Work with the Chinese aviation authorities and industry to adopt 27 proven Commercial Aviation Safety Team (CAST) safety enhancements by FY 2011. This supports China's efforts to reduce commercial fatal accidents to a rate of 0.030 fatal accidents per 100,000 departures by FY 2012.

Obj. 1 By FY 2013, arrange commitments for external funding for at least 35 aviation development projects (7 per year).

Obj. 1 By FY 2013, work with at least 18 countries or regional organizations to develop aviation leaders to strengthen the global aviation infrastructure.

Obj. 2 By FY 2013, expand the use of NextGen performance-based systems and concepts to five priority countries.

## ORGANIZATIONAL EXCELLENCE

**GOAL:** *Ensure the success of the FAA's mission through stronger leadership, a better-trained and safer workforce, enhanced cost-control measures, and improved decision-making based on reliable data.*

### **Objectives:**

1. Implement human resource management practices to attract and retain a highly skilled, diverse workforce and provide employees a safe, positive work environment.
2. Make the organization more effective with stronger leadership, a results-oriented, high performance workforce, and a culture of accountability.
3. Improve financial management while delivering quality customer service.
4. Make decisions based on reliable data to improve our overall performance and customer satisfaction.
5. Enhance our ability to respond to crises rapidly and effectively, including security-related threats and natural disasters.

### **Performance Targets:**

Obj. 1 By FY 2010, 80 percent of FAA external hires will be filled within OPM's 45-day standard for government-wide hiring.

Obj. 1 Reduce the total workplace injury and illness case rate to no more than 2.44 per 100 employees by the end of FY 2011, and maintain through FY 2013.

Obj. 1 Reduce grievance processing time by 30 percent (to an average of 102 days) by FY 2010 over the FY 2006 baseline of 146 days, and maintain the reduction through FY 2013.

Obj. 1 Maintain the air traffic control workforce at or up to 2 percent above the projected annual totals in the Air Traffic Controller Workforce Plan.

Obj. 1 Maintain the aviation safety workforce within 1 percent of the projected annual totals in the Aviation Safety Workforce Plan.



#### **ORGANIZATIONAL EXCELLENCE Performance Targets (Continued)**

Obj. 3 Organizations throughout the agency will continue to implement cost efficiency initiatives such as: 10-15 percent savings for strategic sourcing for selected products and services; by the end of FY 2009, reduce leased space for Automated Flight Service Stations from approximately 510,000 square feet to approximately 150,000 square feet; annual reduction of \$15 million in Information Technology operating costs; and by FY 2010, reduce overhead costs 5-10 percent through automation of invoice processing.

Obj. 3 Obtain an unqualified opinion on the agency's financial statements (Clean Audit with no material weaknesses) each fiscal year.

Obj. 4 In FY 2009, 90 percent of Major System Investments are within 10 percent variance of current baseline total budget estimate at completion (BAC).

Obj. 4 In FY 2009, 90 percent of Major System investments selected annual milestones are achieved.

Obj. 4 Maintain the annual average of FAA surveys on the American Customer Satisfaction Index at or above the average Federal Regulatory Agency score.

Obj. 4 Achieve zero cyber security events that disable or significantly degrade FAA services.

Obj. 5 Exceed Federal Emergency Management Agency continuity readiness levels by 5 percent.

## NOTES

**NOTES**

**Intentionally left blank**

2008

January							February							
	<b>1</b>	2	3	4	5						1	2		
6	7	8	9	10	11	12	3	4	5	6	7	8	9	
13	14	15	16	17	18	19	10	11	12	13	14	15	16	
20	<b>21</b>	22	23	24	25	26	17	<b>18</b>	19	20	21	22	23	
27	28	29	30	31			24	25	26	27	28	29		
March							April							
						1			1	2	3	4	5	
2	3	4	5	6	7	8	6	7	8	9	10	11	12	
9	10	11	12	13	14	15	13	14	15	16	17	18	19	
16	17	18	19	20	21	22	20	21	22	23	24	25	26	
23	24	25	26	27	28	29	27	28	29	30				
30	31													
May							June							
					1	2	3	1	2	3	4	5	6	7
4	5	6	7	8	9	10	8	9	10	11	12	13	14	
11	12	13	14	15	16	17	15	16	17	18	19	20	21	
18	19	20	21	22	23	24	22	23	24	25	26	27	28	
25	<b>26</b>	27	28	29	30	31	29	30						
July							August							
		1	2	3	4	5						1	2	
6	7	8	9	10	11	12	3	4	5	6	7	8	9	
13	14	15	16	17	18	19	10	11	12	13	14	15	16	
20	21	22	23	24	25	26	17	18	19	20	21	22	23	
27	28	29	30	31			24	25	26	27	28	29	30	
September							October							
	<b>1</b>	2	3	4	5	6				1	2	3	4	
7	8	9	10	11	12	13	5	6	7	8	9	10	11	
14	15	16	17	18	19	20	12	<b>13</b>	14	15	16	17	18	
21	22	23	24	25	26	27	19	20	21	22	23	24	25	
28	29	30					26	27	28	29	30	31		
November							December							
						1						5	6	
2	3	4	5	6	7	8	7	8	9	10	11	12	13	
9	10	<b>11</b>	12	13	14	15	14	15	16	17	18	19	20	
16	17	18	19	20	21	22	21	22	23	24	<b>25</b>	26	27	
23	24	25	26	<b>27</b>	28	29	28	29	30	31				
30														

Legal holidays and Federal holidays observed are in **BOLDFACE**.

## 2009

January							February							
				<b>1</b>	2	3	1	2	3	4	5	6	7	
4	5	6	7	8	9	10	8	9	10	11	12	13	14	
11	12	13	14	15	16	17	15	<b>16</b>	17	18	19	20	21	
18	<b>19</b>	20	21	22	23	24	22	23	24	25	26	27	28	
25	26	27	28	29	30	31								
March							April							
1	2	3	4	5	6	7				1	2	3	4	
8	9	10	11	12	13	14	5	6	7	8	9	10	11	
15	<b>16</b>	17	18	19	20	21	12	13	14	15	16	17	18	
22	23	24	25	26	27	28	19	20	21	22	23	24	25	
29	30	31					26	27	28	29	30			
May							June							
					1	2	1	2	3	4	5	6		
3	4	5	6	7	8	9	7	8	9	10	11	12	13	
10	11	12	13	14	15	16	14	15	16	17	18	19	20	
17	18	19	20	21	22	23	21	22	23	24	25	26	27	
24	<b>25</b>	26	27	28	29	30	28	29	30					
31														
July							August							
			1	2	3	4							1	
5	6	7	8	9	10	11	2	3	4	5	6	7	8	
12	13	14	15	16	17	18	9	10	11	12	13	14	15	
19	20	21	22	23	24	25	16	17	18	19	20	21	22	
26	27	28	29	30	31		23	24	25	26	27	28	29	
							30	31						
September							October							
			1	2	3	4	5				1	2	3	
6	7	8	9	10	11	12	4	5	6	7	8	9	10	
13	14	15	16	17	18	19	11	<b>12</b>	13	14	15	16	17	
20	21	22	23	24	25	26	18	19	20	21	22	23	24	
27	28	29	30				25	26	27	28	29	30	31	
November							December							
1	2	3	4	5	6	7				1	2	3	4	5
8	9	10	<b>11</b>	12	13	14	6	7	8	9	10	11	12	
15	16	17	18	19	20	21	13	14	15	16	17	18	19	
22	23	24	25	<b>26</b>	27	28	20	21	22	23	24	<b>25</b>	26	
29	30						27	28	29	30	31			

Legal holidays and Federal holidays observed are in **BOLDFACE**.

## ***FAA VALUES***

***Safety Is Our Passion.***

*We are the world leaders in Aerospace Safety.*

***Quality Is Our Trademark.***

*We serve our country, our stakeholders, our customers, and each other.*

***Integrity Is Our Character.***

*We do the right thing, even when no one is looking.*

***People Are Our Strength.***

*We treat people as we want to be treated.*



	Table of Contents
	Safety
	Air Traffic
	Airports
	Aircraft
	Industry Trends
	Commercial Space Transportation
	Airmen
	Organizational Chart
	FAA Resources
	Organization