



U.S. Department
of Transportation
**Federal Aviation
Administration**

ADMINISTRATOR'S FACT BOOK

August 2006

Produced by:
Assistant Administrator for Financial Services

Website:
[http://www.faa.gov/about/office_org/headquarters_offices/aba/
admin_factbook/](http://www.faa.gov/about/office_org/headquarters_offices/aba/admin_factbook/)

FAA MISSION

*To provide the safest, most efficient
aerospace system in the world.*

FAA VISION

*To improve continuously the safety and
efficiency of aviation, while being
responsive to our customers and
accountable to the public.*

Table of Contents

FAA Vision and Mission Inside Front Cover
FAA Values Inside Back Cover

Safety

Aviation Accidents by Type of Operations.....	3*
Aviation Accident Rates by Type of Operation.....	4*
Airspace Incidents by Incident Type.....	5*
Airspace Incident Rates by Incident Type.....	6*
NTSB U.S. Transportation Fatalities.....	7

FAA Air Traffic

FAA Air Traffic Activity.....	8*
Air Route Traffic Control Center Activity.....	9*
50 Busiest FAA Air Traffic Control Towers.....	10*
50 Busiest Approach Control Facilities.....	12*
Automated Flight Service Station Activity.....	14*

Airports

Number of U.S. Airports.....	16*
National Airspace Systems Delays.....	17*

Aircraft

U.S. Air Carrier Activity.....	18
U.S. General Aviation Activity.....	19
Aircraft Certification Service.....	20

Industry Trends

Scheduled U.S. Air Carrier Traffic & Fin. Trends.....	21
Aviation Forecasts.....	22

Commercial Space Transportation

AST Licensing and Industry Activity.....	23*
U.S. Commercial Space Launch Schedule.....	24*

Airmen

Active Pilots and Nonpilots.....	25*
FAA Organizational Chart.....	Center Fold

Table of Contents (cont.)

FAA Regional Boundaries Map28

FAA Resources

FAA Employment.....29
FAA Percent Minority and Women Employment.....30
FAA Major Work Force Employment.....31*
Labor Relations.....32*

FAA Finances.....33
FAA NAS Operational Facilities.....34

Organization

FAA Officials—Washington Headquarters.....35*
FAA Officials—Major Field Organizations.....38*
FAA Officials—International Offices40
FAA Flight Plan 2006-201041

Aviation Accidents by Type of Operation

Type of Operation	Year	Jan	Feb	Mar	Apr	May	Jun	Jul	Aug	Sep	Oct	Nov	Dec	Year Total
Large Air Carrier	2005	4	1	5	1	3	7	1	4	1	5	3	4	39
	2006	1	2	2	5	2	2	0	0	0	0	0	0	14
Commuter	2005	0	1	0	1	1	0	0	0	1	0	0	2	6
	2006	0	1	0	1	1	0	0	0	0	0	0	0	3
Air Taxi	2005	4	9	3	3	2	6	12	5	5	8	5	5	67
	2006	10	2	7	3	6	3	0	0	0	0	0	0	31
General Aviation	2005	94	86	120	143	166	188	196	196	161	127	92	99	1,668
	2006	86	78	101	143	145	109	0	0	0	0	0	0	662
Rotorcraft*	2005	11	11	13	11	20	24	24	19	28	17	10	7	195
	2006	11	11	9	16	27	9	0	0	0	0	0	0	83

* Part 135 and US registered general aviation rotorcraft accidents.

Note: Preliminary data and subject to change.
As of: 7/18/06

Source: AAI-220
(202) 267-3279

Aviation Accident Rates by Type of Operation

Type of Operation	2002		2003		2004		2005		% Chg 05-04	
	Number	Rate	Number	Rate	Number	Rate	Number	Rate	Number	Rate
Large Air Carriers.....	41	.24	54	.31	30	.16	39	.20	30%	25%
Commuter.....	7	2.56	2	0.62	4	1.32	6	2.00	50%	52%
Air Taxi.....	60	2.06	74	2.55	66	2.04	66	2.02	0%	-1%
General Aviation.....	1,715	6.69	1,739	6.75	1,617	6.49	1,669	6.83	3%	5%

Accident Rates are per 100,000 Flight Hours. Flight hours compiled by FAA.
Rotorcraft rates discontinued, currently under review.

Note: 2005 data preliminary.
As of: 07/18/06

Source: NTSB
www.nts.gov/aviation/stats.htm

Airspace Incidents by Incident Type

Incident Type	Year	Jan	Feb	Mar	Apr	May	Jun	Jul	Aug	Sep	Oct	Nov	Dec	Year Total
Near Midair Collisions	2005	8	6	15	15	9	11	15	12	15	9	11	10	136
	2006	9	5	8	11	7	3	0	0	0	0	0	0	43
Pilot Deviations	2005	136	153	189	188	168	208	208	262	203	200	209	155	2,279
	2006	161	202	214	248	245	224	0	0	0	0	0	0	1,294
Operational Errors	2005	89	215	149	91	104	116	131	130	131	125	115	110	1,506
	2006	94	120	115	108	117	115	0	0	0	0	0	0	669
Vehicle Pedestrian Deviations	2005	16	18	26	23	23	15	23	29	31	26	26	20	276
	2006	14	11	27	22	21	21	0	0	0	0	0	0	116
Surface Incidents	2005	45	59	70	70	63	58	68	97	74	75	65	55	799
	2006	59	69	85	76	76	83	0	0	0	0	0	0	448
Runway Incursions*	2005	18	22	28	26	33	29	36	35	30	33	21	25	336
	2006	21	25	26	25	29	32	36	0	0	0	0	0	194

Note: Preliminary data and subject to change.

Source: ATO-A (IT)
 (202) 385-4802
 *ATO-S
 (202) 385-4788

As of: 07/19/06
 *As of: 07/31/06

Airspace Incident Rates by Incident Type

Incident Type	2002		2003		2004		2005		Percent Change	
	Number	Rate	Number	Rate	Number	Rate	Number	Rate	2004 - 2005 (4)	
									Number	Rate
Operational Errors (1).....	1,041	.66	1,211	.78	1,215	.78	1,506	.77	24%	-1%
Pilot Deviations (2).....	1,922	1.17	2,673	1.62	2,618	1.65	2,279	1.48	-13%	-10%
Surface Incidents (3).....	1,009	1.55	924	1.47	939	1.40	799	1.28	-15%	-9%

(1) Per 100,000 Facility Activities

(2) Per 100,000 Flight Activities

(3) Per 1,000,000 Airport Operations

(4) Calculations use fifteen decimal places for rates (rounded two places for display).

Note: 2005 data preliminary and subject to change.

Source: ATO-A (IT)

(202) 385-4802

As of: 07/10/06

**National Transportation Safety Board
2003-2004 U.S. Transportation Fatalities**

	2003	2004 ¹
Highway		
Passenger cars.....	19,725	19,091
Light Trucks and Vans.....	12,546	12,602
Pedestrians.....	4,774	4,641
Motorcycles.....	3,714	4,008
Pedalcycles ²	629	725
Medium and heavy trucks.....	726	761
Buses.....	41	41
All Other ³	729	767
Total.....	42,884	42,636
Grade Crossings⁴	332	368
Rail		
Intercity ⁵		
Trespassers and nontrespassers ⁶	567	584
Employees and contractors.....	25	29
Passengers on trains.....	3	3
Light, heavy, and commuter rail ⁷	165	186
Total.....	760	802
Marine		
Recreational Boating.....	703	676
Cargo Transport.....	19	25
Commercial fishing ⁸	43	39
Commercial Passengers.....	27	17
Total.....	792	757
Aviation		
General Aviation.....	632	556
Airlines.....	22	14
Air Taxi.....	42	65
Commuter.....	2	0
Foreign/Unregistered ⁹	12	16
Total.....	710	651
Pipeline		
Gas.....	12	19
Liquids.....	0	5
Total.....	12	24
GRAND TOTAL.....	45,158	44,870

¹ 2004 preliminary estimates. Aviation data from NTSB; all other from DOT. ² Includes bicycles or other cycles. ³ Includes vehicle occupant fatalities in vehicle types; ex. farm or construction equipment. ⁴ Grade crossing fatalities not counted separately for determining the grand totals because they are included in the highway and rail categories, as appropriate. ⁵ Data reported to Federal Rail Administration (FRA). ⁶ Includes persons on railroad property with and without permission. Does not include motor vehicle occupants killed at grade crossings. ⁷ Data reported to the FTA. Fatalities for commuter rail operations may also be reported to the FRA and may be included in the intercity railroad fatalities. ⁸ Refers to only operational fatalities. ⁹ Includes non-U.S. registered aircraft involved in accidents in the U.S.

Air Traffic

FAA Air Traffic Activity (In Thousands)

Aircraft Handled by	Jan-Jun 2006*	Jan-Jun 2005	Jan-Dec 2005
FAA ARTCC's			
Air Carrier.....	12,093	12,452	24,871
Air Taxi.....	4,574	5,022	10,007
General Aviation.....	4,099	4,168	8,313
Military.....	2,202	2,048	3,991
TOTAL.....	22,968	23,690	47,182
Airport Operations			
Logged by FAA Towers			
Air Carrier.....	6,448	6,642	13,253
Air Taxi.....	5,029	5,367	10,770
General Aviation.....	9,794	10,319	20,490
Military.....	843	881	1,689
TOTAL.....	22,114	23,209	46,202
Instrument Operations			
Logged by FAA Towers			
Air Carrier.....	6,947	7,095	14,223
Air Taxi.....	5,992	6,356	12,766
General Aviation.....	8,457	8,603	17,536
Military.....	1,379	1,423	2,770
TOTAL.....	22,775	23,477	47,295
Flight Services			
Logged by: **			
Flight Service Stations.....	381	381	895
Automated Flight Service Stations.....	9,849	11,370	22,520
TOTAL.....	10,230	11,751	23,415

*Preliminary
As of: 06/30/06
**As of: 07/28/06

Source: APO-130
(202) 267-3350
ATO-A/AJA
(202) 385-4734

Air Route Traffic Control Center Activity

CY 2005 Rank	Center	Aircraft Handled (000's)		
		Jan-Jun 2006*	Jan-Jun 2005	Jan-Dec 2005
1	Atlanta, GA.....	1,561	1,646	3,236
2	Leesburg, VA.....	1,445	1,564	3,079
3	New York, NY.....	1,461	1,565	3,074
4	Cleveland, OH.....	1,411	1,494	3,020
5	Chicago, IL.....	1,396	1,429	2,898
6	Indianapolis, IN.....	1,333	1,441	2,884
7	Jacksonville, FL.....	1,303	1,335	2,557
8	Miami, FL.....	1,340	1,357	2,501
9	Memphis, TN.....	1,134	1,155	2,308
10	Los Angeles, CA.....	1,151	1,146	2,288
11	Minneapolis, MN.....	1,005	1,044	2,142
12	Fort Worth, TX.....	1,074	1,061	2,134
13	Houston, TX.....	1,076	1,089	2,122
14	Kansas City, KS.....	1,011	1,034	2,083
15	Nashua, NH.....	876	907	1,869
16	Denver, CO.....	913	898	1,836
17	Albuquerque, NM.....	865	893	1,762
18	Oakland, CA.....	840	849	1,703
19	Salt Lake City, UT.....	732	756	1,552
20	Seattle, WA.....	632	639	1,306
21	Anchorage, AK.....	274	297	623
22	Guam **.....	125	101	206

*Preliminary

**Center Radar Approach Control (CERAP)

As of: 06/30/06

Source: APO-130
(202) 267-9947

50 Busiest FAA Airport Traffic Control Towers

CY 2005 Rank	Tower and State	Airport Operations (000's)		
		Jan-Jun 2006*	Jan-Jun 2005	Jan-Dec 2005
1	Hartsfield-Jackson Atl Intl, GA.....	473	497	980
2	Chicago/O'Hare Int'l, IL.....	477	483	972
3	Dallas/Ft. Worth Int'l, TX.....	348	356	718
4	Los Angeles Int'l, CA.....	322	322	651
5	Las Vegas/McCarran Int'l, NV.....	308	304	614
6	Denver International, CO.....	296	278	568
7	Phoenix Sky Harbor Int'l, AZ.....	274	280	564
8	Houston/G Bush Intercont'l, TX.....	299	277	564
9	Washington Dulles Int'l, VA.....	208	289	553
10	Philadelphia Int'l, PA.....	255	268	536
11	Minneapolis-St. Paul Int'l, MN.....	238	270	532
12	Charlotte/Douglas Int'l, NC.....	251	262	523
13	Detroit Metro Wayne Co., MI.....	239	265	523
14	Covington/Cincinnati Int'l, KY.....	173	262	495
15	Salt Lake City Int'l, UT.....	207	224	455
16	Newark International, NJ.....	221	216	441
17	Boston/Logan Int'l, MA.....	199	207	422
18	Van Nuys, CA.....	195	211	411
19	La Guardia, NY.....	202	202	406
20	Memphis International, TN.....	195	196	395
21	Miami International, FL.....	199	197	381
22	Phoenix-Deer Valley, AZ.....	212	182	378
23	Santa Ana/John Wayne, CA.....	184	185	367
24	John F. Kennedy Int'l, NY.....	179	176	363
25	Orlando International, FL.....	184	183	360

*Preliminary

As of: 06/30/06

50 Busiest FAA Airport Traffic Control Towers

CY 2005 Rank	Tower and State	Airport Operations (000's)		
		Jan-Jun 2006*	Jan-Jun 2005	Jan-Dec 2005
26	Long Beach/Daugherty, CA.....	176	180	358
27	San Francisco Int'l, CA.....	176	173	354
28	Metropolitan Oakland Int'l, CA.....	159	170	348
29	Denver/Centennial, CO.....	155	180	346
30	Tulsa/Riverside, OK.....	115	187	347
31	Seattle Tacoma Int'l, WA.....	163	167	342
32	Fort Lauderdale/Hollywood, FL.....	159	179	331
33	Honolulu International, HI.....	152	167	331
34	Orlando/Sanford, FL.....	159	172	320
35	Anchorage International, AK.....	142	148	316
36	Baltimore/Wash. Int'l, MD.....	150	155	310
37	Seattle/Boeing Field, WA.....	145	150	300
38	Lambert-St. Louis Int'l, MO.....	143	149	297
39	Chicago Midway, IL.....	145	141	291
40	Tucson International, AZ.....	141	136	285
41	Washington National, DC.....	138	138	278
42	Mesa/Falcon Field, AZ.....	138	137	270
43	Tampa International, FL.....	131	139	270
44	Pittsburgh International, PA.....	116	138	269
45	Portland International, OR.....	126	129	262
46	Cleveland Hopkins Int'l, OH.....	123	128	260
47	Raleigh-Durham Int'l, NC.....	120	126	249
48	San Diego/Montgomery Field, CA.....	114	120	245
49	Grand Forks International, ND.....	112	127	244
50	Houston Hobby, TX.....	118	120	242

50 Busiest Radar Approach Control Facilities

CY 2005 Rank	Facilities/State	Instrument Ops (000s)		
		Jan-Jun 2006*	Jan-Jun 2005	Jan-Dec 2005
1	Southern Calif. TRACON, CA.....	1,045	1,045	2,129
2	New York TRACON, NY.....	991	1,005	2,066
3	Potomac TRACON, DC.....	841	947	1,887
4	North California TRACON, CA.....	778	755	1,612
5	Chicago TRACON, IL.....	695	701	1,425
6	Atlanta TRACON, GA.....	695	698	1,393
7	Dallas/Ft Worth, TRACON, TX.....	605	601	1,221
8	Houston TRACON, TX.....	477	454	923
9	Miami International, FL.....	476	486	919
10	Phoenix TRACON, AZ.....	361	391	780
11	Denver TRACON, CO.....	393	377	771
12	Philadelphia International, PA.....	350	367	738
13	Boston TRACON, MA.....	335	353	730
14	Detroit TRACON, MI.....	325	360	715
15	Las Vegas TRACON, NV.....	355	331	689
16	Minneapolis TRACON, MN.....	303	336	669
17	Charlotte/Douglas Int'l, NC.....	311	328	652
18	Orlando International, FL.....	349	330	637
19	Covington/Cincinnati Int'l, KY.....	237	335	637
20	San Juan CERAP, PR.....	327	333	607
21	Tampa International, FL.....	288	307	576
22	Seattle/Tacoma TRACON, WA.....	251	277	549
23	Honolulu Control Facility, HI.....	268	273	549
24	Salt Lake City TRACON, UT.....	245	275	547
25	Memphis International, TN.....	229	230	463

* Preliminary

Source: APO-130
(202) 267-9947

As of: 06/30/06

50 Busiest Radar Approach Control Facilities

CY 2005 Rank	Facilities/State	Instrument Ops (000's)		
		Jan-Jun 2006*	Jan-Jun 2005	Jan-Dec 2005
26	St Louis TRACON, MO.....	221	231	460
27	Jacksonville Int'l, FL.....	219	221	430
28	Daytona Beach Int'l, FL.....	227	228	424
29	San Antonio Int'l, TX.....	187	192	386
30	Port Columbus Int'l, OH.....	189	188	384
31	Pittsburgh International, PA.....	161	189	372
32	Cleveland Hopkins Int'l, OH.....	172	180	369
33	Palm Beach International, FL.....	198	204	361
34	Corpus Christi, TX.....	177	176	346
35	Dayton International, OH.....	164	167	344
36	Portland TRACON, OR.....	160	159	333
37	Indianapolis International, IN.....	165	164	332
38	Pensacola TRACON, FL.....	150	178	327
39	Anchorage TRACON, AK.....	151	155	323
40	Austin, TX.....	157	159	319
41	Raleigh-Durham Int'l, NC.....	156	161	319
42	Milwaukee/Gen Mitchell Int'l, WI.....	145	154	315
43	Norfolk International, VA.....	143	148	310
44	Nashville International, TN.....	310	310	297
45	Kansas City International, MO.....	140	138	285
46	Tucson TRACON, AZ.....	146	143	285
47	Louisville Int'l/Standiford, KY.....	129	134	273
48	Tulsa International, OK.....	117	131	272
49	Wichita Mid Continent.....	130	131	262
50	Yankee TRACON, CT.....	116	124	255

Automated Flight Service Stations Activity

CY 2005 Rank	AFSS/State	Flight Services (000's)		
		Jan-Jun 2006*	Jan-Jun 2005	Jan-Dec 2005
1	Miami AIFSS, FL.....	452	611	1,046
2	St. Petersburg, FL.....	504	502	901
3	Leesburg, VA.....	326	348	721
4	Lansing, MI.....	329	294	641
5	Fort Worth, TX.....	312	322	637
6	Prescott, AZ.....	300	292	575
7	Princeton, MN.....	308	235	539
8	Macon, GA.....	241	270	532
9	Raleigh, NC.....	243	262	520
10	Seattle, WA.....	268	246	516
11	Denver, CO.....	211	240	488
12	Conroe, TX.....	263	240	473
13	Bridgeport, CT.....	214	195	470
14	Kankakee, IL.....	265	221	469
15	San Angelo, TX.....	159	234	459
16	Green Bay, WI.....	184	192	444
17	Kenai, AK.....	186	208	441
18	Nashville, TN.....	256	207	432
19	McAlester, OK.....	172	234	430
20	Anniston, AL.....	136	235	428
21	Albuquerque, NM.....	256	190	425
22	Williamsport, PA.....	170	209	413
23	Columbia, MO.....	199	196	396
24	Hawthorne, CA.....	111	217	386
25	Oakland, CA.....	170	199	384
26	Altoona, PA.....	142	197	382
27	Anderson, SC.....	191	187	379
28	Gainesville, FL.....	130	198	372
29	Jonesboro, AR.....	151	171	356
30	Reno, NV.....	124	183	348

* Preliminary

Source: ATX-400
(202) 385-4734

Automated International Flight Service Station--AIFSS

As of: 07/28/06

Automated Flight Service Stations Activity

CY 2005 Rank	AFSS/State	Flight Services (000's)		
		Jan-Jun 2006*	Jan-Jun 2005	Jan-Dec 2005
31	Terre Haute, IN.....	128	168	344
32	St. Louis, MO.....	108	158	320
33	Rancho Murieta, CA.....	116	170	317
34	Riverside, CA.....	80	182	311
35	Burlington, VT.....	95	155	310
36	Cedar City, UT.....	153	145	304
37	Cleveland, OH.....	131	143	297
38	New York, NY.....	155	127	296
39	McMinnville, OR AFSS.....	93	151	295
40	Millville, NJ.....	0	212	290
41	Honolulu, HI.....	127	142	286
42	Elkins, WV.....	72	142	270
43	San Diego, CA.....	149	132	268
44	Wichita, KS.....	104	137	268
45	Bangor, ME.....	102	119	260
46	Dayton, OH.....	107	128	257
47	De Ridder, LA.....	112	139	250
48	Fort Dodge, IA.....	84	116	232
49	San Juan, PR IAFSS.....	97	122	229
50	Huron, SD.....	83	110	221
51	Grand Forks, ND.....	37	133	219
52	Buffalo, NY.....	135	91	215
53	Louisville, KY.....	103	104	205
54	Great Falls, MT.....	81	89	196
55	Greenwood, MS.....	55	99	165
56	Fairbanks, AK.....	66	71	159
57	Jackson, TN.....	73	77	155
58	Columbus, NE.....	53	83	155
59	Boise, ID.....	57	71	153
60	Casper, WY.....	65	66	145
61	Juneau, AK.....	56	53	126

Airports

Number of U.S. Airports ¹ (As of December 31)

	2005	2004	2003
Total Airports	19,854	19,820	19,581
Public Use Airports	5,270	5,288	5,286
# with Paved Runways.....	3,942	3,941	3,938
# with Unpaved Runways....	1,328	1,347	1,348
# with Lighted Runways.....	4,045	4,037	4,026
# with Unlighted Runways...	1,225	1,251	1,260
Private Use Airports	14,584	14,532	14,295 ^r
# with Paved Runways.....	4,836	4,771	4,678
# with Unpaved Runways...	9,748	9,761	9,617
# with Lighted Runways.....	1,346	1,301	1,223
# with Unlighted Runways..	13,238	13,231	13,072
Public use airports abandoned...	14	10	19
Private use airports abandoned.	115	117	214
Certificated Airports*	575	599	628

¹ Includes civil and joint-use civil-military airports, heliports, STOLports, and seaplane bases in the U.S. and its territories.

* Certificated airports serve Air Carrier Operations with aircraft seating more than 9 passengers seats. (FAR Part 139).
r revised

Source: AAS-330
(202) 267-8752

As of: 03/15/06

National Airspace Total System Delays

Year	Jan	Feb	Mar	Apr	May	Jun	Jul	Aug	Sep	Oct	Nov	Dec	YTD Total
2006*	29,463	24,705	37,218	35,132	40,669	48,096							215,283
2005	32,121	30,176	34,633	25,887	30,920	48,922	58,471	45,328	32,949	34,221	34,273	29,766	437,667
2004	28,104	32,274	34,001	32,459	50,800	52,121	46,894	43,770	30,412	37,271	35,234	32,446	455,786
2003	16,159	18,260	25,387	17,474	26,544	27,413	32,833	37,066	28,882	21,422	34,116	31,332	316,888
2002	14,158	13,821	20,020	24,027	28,533	33,770	32,304	29,056	24,493	25,266	17,712	22,489	285,649

Delays of 15 minutes or longer

* Preliminary information that is subjected to change

As of: 06/30/06

Source: ATT-220
(703) 904-4470

Aircraft

U.S. Air Carrier Activity

	CY 2005	CY 2004	CY 2003
Total Number of Aircraft¹.....	19,239	19,382	19,356
Type of Carrier			
Domestic, flag, supplemental, and cargo air carriers.....	7,668	7,720	7,579
Commuter Air Carriers and Air Taxis.....	11,571	11,662	11,777
Total Number of Aircraft¹.....	19,239	19,382	19,356
Type of Aircraft			
Jet.....	9,880	9,673	9,235
Turboprop.....	2,994	3,179	3,281
Piston.....	3,745	3,949	4,269
Rotary Wing.....	2,620	2,581	2,571
Air Carrier Traffic Statistics² (Millions)³			
Passenger miles flown.....	795,038	752,358	674,192
Passenger enplanements.....	747	714	657
Ton miles.....	118,743	113,194	100,958
Aircraft miles flown.....	8,239	8,006	7,370
Passenger load factor ³			
Domestic.....	77.2%	74.4%	72.6%
International.....	79.2%	79.1%	76.5%

¹ Source: Vital Information System

² Includes domestic and international scheduled and non-scheduled service, domestic, flag, supplemental, cargo air carriers and commuters

³ Proportion of aircraft seating capacity that is sold.

As of: 3/15/06

Source: AFS-40
(202) 385-4514
*BTS (K-25)
(202) 366-8513

**U.S. General Aviation
and Air Taxi Activity
(Calendar Years)**

	Estimated Active Aircraft (thousands)		Estimated Hours Flown (Millions)	
	2004	2003	2004	2003
Total	219.4	209.7	28.1	27.3
By Type Aircraft				
Piston.....	165.2	160.9	18.1	19.0
Turboprop.....	8.4	7.7	2.2	1.9
Jet.....	9.3	8.0	3.7	2.7
Rotary Wing.....	7.8	6.5	2.5	2.1
Other.....	5.9	6.0	0.2	0.3
Experimental.....	22.8	20.6	1.3	1.3
By Type Flying				
Corporate.....	10.2	10.5	2.8	3.2
Business.....	24.2	25.0	3.2	3.4
Personal.....	149.7	146.7	10.2	11.3
Instructional.....	13.1	12.7	4.0	4.4
Aerial Application.....	3.2	3.3	1.1	1.1
Aerial Observation.....	4.8	4.2	1.5	1.3
Aerial Other.....	0.8	0.8	0.1	0.1
External Load.....	0.2	0.2	0.1	0.1
Other Work.....	0.9	1.7	0.3	0.4
Sightseeing.....	1.1	0.9	0.2	0.2
Air Tours.....	0.4	0.2	0.2	0.2
Air Taxi.....	6.2	2.6	2.5	1.2
Air Medical Services...	1.6	0.9	0.6	0.5

As of: 03/13/06

AAI-220
(202) 267-8659

**Aircraft Certification Service
Aircraft Certification Mission and
Program Files**

FY 2004

Type Certificates/Supplemental Type Certificates	
Issued.....	984
Other Design Approvals Issued.....	14,146
Issued.....	2,582
Airworthiness Certificates Issued.....	831
New Airworthiness Directives (AD) Issued.....	417
 New Designees (Representative of the Administrator)	
Appointed.....	792
Total Active Designees.....	4,761

As of: 03/15/06

Industry Trends

Scheduled U.S. Air Carrier Traffic* and Financial** Trends (In Billions)

	FY 2005	FY 2004	Numerical Change	Percent Change
TRAFFIC				
ASM'S				
Majors.....	906.31	870.19	36.12	4.2
Nationals.....	84.73	72.73	12.00	16.5
Regionals.....	12.07	10.47	1.60	15.3
Totals.....	1003.11	953.39	49.72	5.2
RPM'S				
Majors.....	703.57	658.29	45.28	6.9
Nationals.....	62.71	52.73	9.98	18.9
Regionals.....	7.53	6.23	1.30	20.9
Totals.....	773.81	717.25	56.56	7.9
Load Factor (in percent)				
Majors.....	77.6%	75.6%	2.5	
Nationals.....	74.0%	72.5%	0.9	
Regionals.....	62.4%	59.5%	3.0	
Totals.....	77.1%	75.2%	1.9	
FINANCIAL				
Revenues				
Majors.....	\$129.68	\$116.66	\$13.02	11.2
Nationals.....	\$14.72	\$13.13	\$1.59	12.1
Regionals.....	\$1.08	\$0.94	\$0.14	15.1
Totals.....	\$145.48	\$130.72	\$14.75	11.3
Expenses				
Majors.....	\$131.43	\$116.64	\$14.79	14.8
Nationals.....	\$14.13	\$12.50	\$1.63	1.6
Regionals.....	\$1.09	\$0.90	\$0.19	0.2
Totals.....	\$146.66	\$130.05	\$16.61	12.8
Operating Profit/Loss				
Majors.....	(\$1.75)	\$0.02	(\$1.77)	
Nationals.....	\$0.59	\$0.63	(\$0.04)	
Regionals.....	(\$0.02)	\$0.03	(\$0.05)	
Totals.....	(\$1.18)	\$0.67	(\$1.85)	

*Effective FY 2003, small certificated and commuter air carriers with aircraft size less than 60 seats are required to report traffic on DOT Form 41 instead of DOT Form 298C. As a result, traffic statistics for these carriers are now included in this report. Financial results for these carriers continue to be reported on Form 298C and are excluded from this report.

**Effective FY 2003, Comair, Atlantic Coast Airlines, SkyWest Airlines, and ExpressJet started reporting financial results using DOT Form 41. Prior to FY 2003, these carriers reported their financial results using DOT Form 298C and were not included in this report.

Source: APO-110

As of: 03/31/06

21

(202) 493-4236

Aviation Forecasts

Estimated Forecast
FY 2005 FY 2009

FAA FACILITY WORKLOAD		
Aircraft Handled by FAA ARTCC's (Millions)		
Air Carrier.....	25.0	27.4
Air Taxi/Commuter.....	10.1	11.2
General Aviation.....	8.4	8.8
Military.....	4.1	4.1
Total.....	47.5	51.5
Operations Logged by FAA/Contract Towers (Millions)		
Airport.....	63.1	67.1
Instrument.....	49.0	51.4
CIVIL AVIATION ACTIVITY		
Certificated Route Air Carrier		
Revenue Passenger Enplanements (Millions).....	587.3	640.1
Revenue Passenger Miles (Billions).....	709.1	805.6
Air Carrier Aircraft.....	4,974	5,412
General Aviation Estimated		
Hours Flown (Millions)*.....	28.3	32.2
Active Aircraft (Thousands)*.....	214.6	231.0
ESTIMATED FUEL CONSUMED BY U.S. DOMESTIC CIVIL AVIATION (Millions of Gallons)		
Jet Fuel		
Air Carrier.....	19,356	21,898
General Aviation.....	1,009	1,434
Aviation Gas		
Air Carrier.....	2	2
General Aviation.....	290	318
Active Pilots (Thousands)*.....	609,603	616,910

*Calendar Year

As of: 3/31/06

Source: APO-110
(202) 493-4236

U.S. Commercial Space Transportation FAA Licensed Activity

	CY 2006 (Projected)	CY 2005	CY 2004
Licensed Commercial Launches			
TOTAL	8	5	14
Number of Orbital Launches	8	5	9
Number of Suborbital Launches	0	0	5
By Launch Vehicle Type			
Delta Family (Boeing Company)	1	0	0
Atlas Family (Lockheed Martin)	1	1	5
Pegasus (Orbital Sciences Corp.)	0	0	0
Taurus (Orbital Sciences Corp.)	0	0	1
Zenit 3SL (Sea Launch)	6	4	3
Falcon 1 (SpaceX)	0	0	0
SpaceShipOne (Scaled Composites)	0	0	5
other suborbital	0	0	0
By Launch Site (Federal)			
Cape Canaveral AF Station, FL	2	1	5
Vandenberg AFB, CA	0	0	1
Kwajalein / Marshall Islands	0	0	0
By Launch Site (Commercial)			
Pacific Ocean	6	4	3
Other Commercial	0	0	0
Mojave Airport, CA	0	0	5

Source: AST
(202) 267-7989

As of: 8/1/06

United States Commercial Space Launch Schedule, CY 2006 (launch dates are subject to change)		
Payload (Operator)/ Description	Launch Company/ Vehicle	Launch Date/ Launch Site (Status)
Echostar 10 (U.S.) Communications Satellite	Sea Launch (Boeing Launch Services (BLS)) Zenit 3SL	February 15, 2006 Pacific Ocean Platform (Successful)
Astra 1KR (Luxembourg) Comm. Satellite	Lockheed Martin (International Launch Services) Atlas V	April 2006 Cape Canaveral Air Force Station, FL
JCSat 9 (Japan) Comm. Satellite	Sea Launch (BLS) Zenit 3SL	April 2006 Pacific Ocean Platform
GOES-N (U.S.) Remote Sensing Satellite	The Boeing Company (BLS) Delta IV	May 2006 Cape Canaveral Air Force Station, FL
Unannounced (unannounced) Comm. Satellite	Sea Launch (BLS) Zenit 3SL	Summer 2006 Pacific Ocean Platform
WorldView 1 (U.S.) Remote Sensing Satellite	The Boeing Company (BLS) Delta II	October 2006 Vandenberg Air Force Base, CA
Unannounced (unannounced) Comm. Satellite	Sea Launch (BLS) Zenit 3SL	Fall 2006 Pacific Ocean Platform
C/NOFS (U.S.) Science Satellite	Orbital Sciences Pegasus XL	2006 Kwajalein, Marshall Islands
Razaksat (Malaysia) Comm. Satellite	SpaceX Falcon 1	2006 Kwajalein, Marshall Islands
Unannounced (unannounced) Comm. Satellite	Sea Launch (BLS) Zenit 3SL	Fall/Winter 2006 Pacific Ocean Platform

As of: 07/31/06

Source: AST
(202) 267-7989

**Active Pilots and Nonpilots
(As of 30 June)**

	2005		2004	
	Total	Women	Total	Women
Pilot-Total	609,737	36,684	618,633	37,243
Student.....	87,213	9,717	87,910	9,857
Private.....	228,619	14,517	235,994	15,036
Commercial.....	120,614	7,315	122,592	7,421
Airline Transport.....	141,992	5,008	142,160	4,908
Other.....	31,299	27	29,977	21
Nonpilot-Total ¹	644,016	119,850	616,293	18,666
Mechanic.....	320,293	6,152	317,111	5,932
Repairmen.....	40,030	2,108	39,231	2,039
Ground Instructor.....	74,378	5,612	73,735	5,500
Flight Engineer.....	57,756	1,986	59,376	2,007
Flight Attendant ³	125,032	100,630	NA	NA
Other ⁴	26,527	3,362	25,840	3,188
Flight Instructor	90,566	6,067	89,696	6,970

¹ Includes helicopter (only), glider (only), and recreational and sport pilot certificates. Include Glider pilots represents pilots who received a medical examination within the last 25 months. Lighter-than-air type ratings are no longer being issued.

² Excludes non-pilots 70 years old or over in all certificate types except flight engineers and flight navigators.

³ Introduced in 2005

⁴ Includes flight navigators, parachute riggers, and dispatchers.

As of 06/30/06

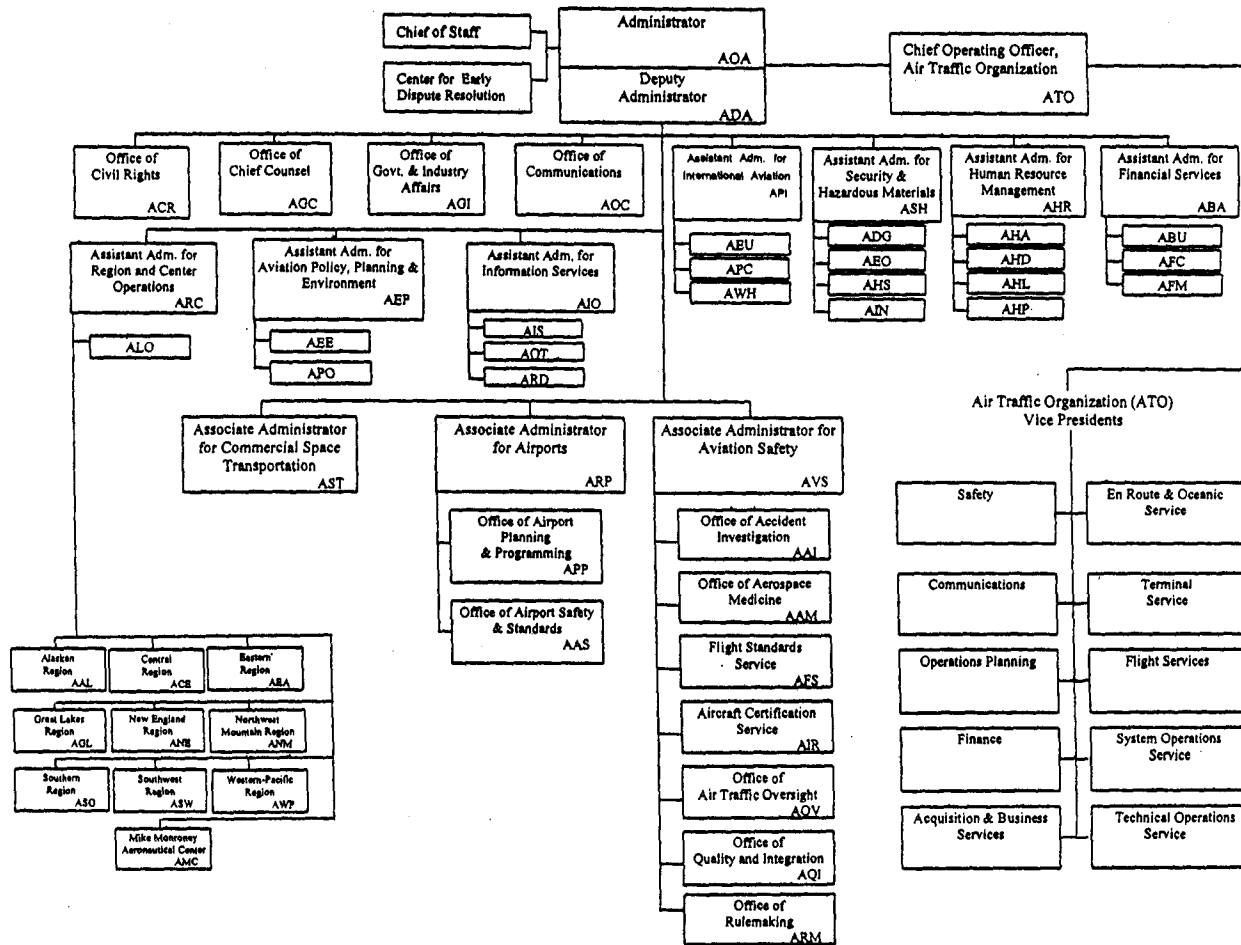
(202) 267-3103

25

Airmen

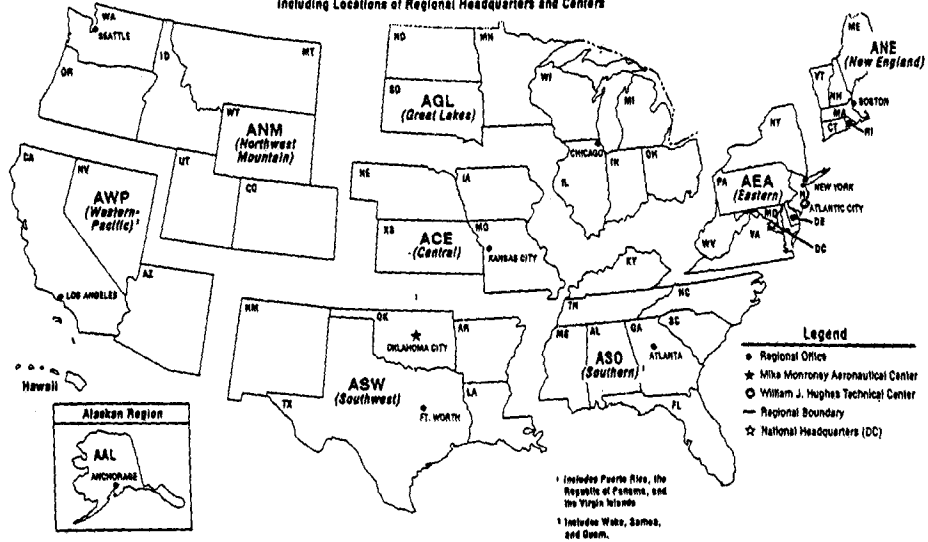
As of January 18, 2006

FEDERAL AVIATION ADMINISTRATION



U. S. DEPARTMENT OF TRANSPORTATION
Federal Aviation Administration
FAA REGIONAL BOUNDARIES
Including Locations of Regional Headquarters and Centers

28



FAA Resources

FAA Employment (Permanent Employees)¹

	FY05	FY04
Line of Business		
Air Traffic Organization (ATO)*.....	35,008	36,328
Aviation Safety (AVS).....	6,335	6,570
Airports (ARP).....	473	480
Comm. Space Transportation (AST)....	54	55
Staff Offices**.....	3,860	3,896
*	45,730	47,329
Region/Center/Headquarters (included in above total)		
Aeronautical Center.....	3,390	1,561
Alaskan.....	1,305	1,330
Central.....	2,277	2,344
Eastern.....	5,074	5,220
Great Lakes.....	6,107	6,280
New England.....	1,785	1,861
Northwest Mountain.....	3,956	4,014
Southern.....	7,092	7,293
Southwest.....	5,076	5,259
Western-Pacific.....	5,091	5,114
Washington Headquarters (only) ²	4,097	4,178
Washington Headquarters Field.....	n/a	1,709
Technical Center.....	1,245	1,166

¹ Full time permanent and part time permanent employees only.

² Washington Headquarters employees physically located in Orville/Wilbur Wright Buildings and surrounding areas (i.e. Portals, etc).

* ATO became effective October 2003. ATO includes ATS, ARA, AOA

** Staff Offices include: ABA; ACR; AEP; AGC; AGI; AHR; AIO; AOC; APO; ARC; ASH.

Disclaimer: This is a statistical snapshot of the workforce demographics. The use of this data in any employment decision is PROHIBITED without the express written authorization of the Deputy Chief Counsel for Operations, AGC-3.

As of: 12/31/05

Source: AHP-100
(202) 267-8257

FAA Resources

FAA Workforce Employment

FY 2005

	Total	Percentage
Total Employees	45,730	100.00%
Male	34,864	75.80%
Female	11,066	24.20%
People with Disabilities	2,438	5.30%
White	36,597	80.00%
Black or African-American	4,276	9.40%
Hispanic or Latino	2,533	5.50%
Asian/Native Hawaiian or Other	1,562	3.40%
American Indian or Alaska Native	762	1.70%
Targeted	201	0.40%
Non-Targeted	2,237	4.90%

Disclaimer: This is a statistical snapshot of the workforce demographics. The use of this data in any employment decision is PROHIBITED without the express written authorization of the Deputy Chief Counsel for Operations, AGC-3.

Source: ACR-6

As of: 12/31/05

(202) 385-8430

Major Work Force Employment

	Employment*				
	FY 06	FY05	FY04	%Chg. FY06 - FY05	Actual Change
Air Traffic Controller Work Force	16,683	16,645	17,070	0.2%	38
ATCS** (bargaining unit employees)	14,305	14,227	14,736	0.5%	78
Traffic Management Coordinators**	629	623	612	1.0%	6
Operations Supervisors**	1,749	1,795	1,722	-2.6%	-46
Flight Service Stations (FSS)***	199	2,087	2,583	-90.5%	-1,888
Field Maintenance (210-211 only)	7,196	7,265	7,253	-0.9%	-69
Airports Work Force	459	466	472	-1.5%	-7
Aircraft Certification	1,112	1,104	1,141	0.7%	8
Flight Standards Work Force	4,312	4,408	4,564	-2.2%	-96

* Full time permanent appointments (operations direct).

** Included in Air Traffic Controller Work Force Total.

*** FSS employment reduction due to A-76 transfer to Lockheed Martin effective 10/04/05.

Note: FAA Staffing Standards Report entitled "Staffing Guide for Overhead and Supervisory Air Traffic Control Specialists in Field Facilities", signed December 2000, moved the STMCs from the Controller Work Force to Operations Oversight.
N/A - Data Not Available

As of: 06/30/06

Source: AHP-100
(202) 267-9123

Labor Relations

	BARGAINING	LABOR	EMPLOYEES
	UNITS	AGREEMENTS	REPRESENTED
Unions.....	45	28	34,399
AFGE.....	10	6	1,617
AFSCME (HQ).....	5	0	1,816
LIUNA.....	1	1	156
NAATS.....	1	1	156
NAGE.....	3	3	293
NATCA (AT).....	4	2	15,572
NATCA (AF).....	2	2	1,365
NATCA (Other).....	8	4	1,428
NFFE.....	3	2	671
PAACE.....	3	2	383
PASS (AF/AEA).....	1	1	7,218
PASS (AVN).....	1	1	331
PASS (AFS).....	2	2	3,251
PASS (AIR).....	1	1	142

AFGE --American Federation of Government Employees
 AFSCME --American Federation of State, County, and Municipal Employees
 LIUNA --Laborer's International Union of North America
 NAATS --National Association of Air Traffic Specialists
 NAGE --National Association of Government Employees
 NACTA --National Air Traffic Controllers Association
 NFFE --National Federation of Federal Employees
 PAACE --Professional Association of Aeronautical Center Employees
 PASS --Professional Airway System Specialists

Source: AHL-400
 (202) 267-3548

As of: 07/13/06

FAA Finances
(In Millions of Dollars)

	FY 2005 ¹	FY 2006 ²	FY 2007
	Actual	Enacted	Request
Budget Authority (BA)			
Grants-In-Aid (Obligation Lim/Approp).....	3,472	3,515	2,750
Other Budget Authority.....	25	0	0
Research, Engineering, & Development.....	130	137	130
Facilities and Equipment.....	2,525	2,555	2,503
Operations.....	7,707	7,955	8,366
Flight Service Station A-76 Competition	0	149	0
Total.....	13,859	14,310	13,749
Obligations Incurred--Operations			
Appropriation by Line of Business			
Air Traffic Organization (ATO).....	6,341	6,550	6,704
Aviation Safety (AVS)	904	949	982
Commercial Space Transportation (AST)....	11	12	12
Staff Offices (SO).....	434	445	668
Flight Service Station A-76 Competition	0	149	0
Total.....	7,691	8,104	8,366
Airport Grant Obligations (NET)			
Primary Airports & Cargo.....	1,021	1,008	589
States/Territories/Insular/Alaska Supp.....	698	706	500
Carryover Entitlements.....	416	432	432
Discretionary Fund.....	859	850	912
Small Airport Fund.....	389	428	215
Total.....	3,383	3,424	2,648
Total FAA Outlays.....	13,839	14,422	14,820
Trust Fund Receipts from Excise Taxes and Interest			
Transportation of Persons by Air	7,061	7,381	7,817
Transportation of Property.....	461	583	616
Use of International Air Facilities.....	1,922	1,866	2,044
Aviation Fuel Commercial Use.....	354	498	517
Aviation Fuel (Other Than Gas).....	478	280	304
Aviation Gasoline.....	38	42	44
Total Tax Revenue.....	10,314	10,651	11,341
Interest revenue.....	429	438	446
Total Tax & Interest Revenue.....	10,743	11,089	11,787

Numbers may not add due to rounding. ¹ FY05 reflects across-the-board rescission of 0.80 percent per P.L. 108-44 and includes hurricane supplemental funding.

² FY 06 reflects 1.0 percent across-the-board rescission and hurricane supplemental for \$40.6M in Facilities and Equipment per P.L. 109-146.

ATS/ARA are combined into the new ATO structure.

As of: 03/15/06

Source: ABU-100
(202) 267-5060

FAA NAS Operational Facilities
(As of February 28, 2006)

	2005	2004	2003
NAS Operational Facilities¹	40,992	41,082	40,997
Communications.....	14,383	14,383	14,277
Automation.....	3,930	3,964	4,057
Environment.....	6,144	6,194	6,505
Navigation.....	11,119	11,122	11,131
Surveillance.....	1,850	1,882	1,894
Weather.....	3,566	3,537	3,133
Air Traffic Control Facilities²			
Air Route Traffic Control Center.....	21	21	21
Airport Traffic Control Tower.....	518	517	449
Flight Service ³	76	76	76
Flight Service Stations.....	15	16	16
Automated Flight Service Stations...	61	60	60

¹ Excludes non-federal facilities and foreign facilities.

² Included in NAS operational facilities.

³ Flight Service include Flight Service Stations and Automated Flight Service Stations.

As of: 2/28/06

Source: AOP-200
(202) 267-5288

FAA Officials

Washington Headquarters

Routing Symbol	Officials
AOA	Administrator Marion C. Blakey, 202-267-3111 Michael O'Malley, Chief of Staff, 202-267-7416 Louise E. Mailett, Senior Counsel to AOA, 202-267-7417
ADA	Deputy Administrator Bobby Sturgell, 202-267-8111 Howard Swancy, Senior Advisor to ADA, 202-267-8111
ATO	Chief Operating Officer, Air Traffic Organization Russell G. Chew, 202-493-5602 Acquisition & Business Service Vice President, James H. Washington, 202-267-7222 Communications Services Vice President, Sandra M. Sanchez, 202-493-5154 Flight Services Vice President, James H. Washington, 202-385-7500 En Route & Oceanic Services Vice President, Richard L. Day, 202-385-8501 Finance Services Vice President, Eugene D. Juba, 202-267-3022 Operations Planning Services Vice President, Vickie Cox, Acting, 202-267-7111 System Operations Services Vice President, Michael A. Cirillo, 202-267-8558 Safety Services Vice President, William S. Davis, 202-493-5882 Terminal Services Vice President, David B. Johnson, 202-385-8801 Technical Operations Services Vice President, Steven B. Zaidman, 202-267-8181 Joint Planning & Development Office Director, Charles Leader, 202-220-3310
ABA	Assistant Administrator for Financial Services Ramesh K. Punwani, CFO, 202-267-9105 Deputy, John F. Hennigan, 202-267-8928
ABU	<i>Office of Budget</i> Director, Alex Keenan, 202-267-8010
AFC	<i>Office of Financial Controls</i> Director, Carl Burrus, 202-267-7140
AFM	<i>Office of Financial Management</i> Director, Tim Lawler, 202-267-3018
ACR	Assistant Administrator for Civil Rights Fanny Rivera, 202-267-3254 Deputy, Barbara A. Edwards, 202-267-3264
AEP*	Asst. Admin. for Aviation Policy, Planning & Environment Dan K. Elwell, 202-267-3927 Deputy, Nancy LoBue, 202-267-7954

* Updated this issue
 As of: 08/07/06

Source: ABA-1
 (202) 267-9105

FAA Officials

Washington Headquarters--(Cont)

Routing Symbol	Officials
AEE	Office of Environment and Energy Director, Carl Bureson, 202-267-3576
APO	Office of Aviation Policy and Plans Director, Nan Shellabarger, 202-267-3274
AGC	Chief Counsel Andrew B. Steinberg, 202-267-3222 Deputy Chief Counsel for Policy and Adjudication James W. Whitlow, 202-267-3773 Deputy Chief Counsel for Operations Thomas Romig, 202-267-3773
AGI	Asst. Administrator for Government & Industry Affairs David Balloff, 202-267-3277 Deputy, Daniel J. Hickey, 202-267-8211
AHR	Asst. Administrator for Human Resource Management Ventris C. Gibson, 202-267-3456 * Deputy for Strategic Human Capital Management Mary Ellen Dix, 202-267-3850 Deputy for Strategic Labor, Joseph N. Miniace, 202-267-3979
AHA*	Office of the Accountability Board Executive Director, Maria Fernandez-Greczmiel, 202-267-3065
AHD*	Office of Corporate Learning Executive Director, Darlene Freeman, 202-267-9041
AHL*	Office of Labor Management Relations Executive Director, Melvin Harris, 202-267-3979
AHP*	Office of Human Resources Management Programs and Policies Executive Director, Sue A. Engelhardt, 202-267-3850
AIO	Assistant Administrator for Information Services David M. Bowen, CIO, 202-493-4570 Deputy, Walter Iwanow, 202-493-4570
AIS	Office of Information Systems Security Director, Michael F. Brown, 202-267-7104
AOT	Office of Information Technology Optimization and Performance Tracking Director, Thomas O'Keefe, 202-493-4629
ARD	Office of Information Technology Research and Development Chief Technology Officer, Mark T. Powell, 202-385-8150
AOC*	Assistant Administrator for Communications Geoffrey M. Basye, Acting, 202-267-3883 Deputy, External Communications, Laura Brown, 202-267-3883 Deputy, Internal Communications, Gerald Lavey, 202-267-9499
API	Asst. Administrator for International Aviation Joseph Bogosian, 202-385-8900
ARC	Assistant Administrator for Regions/Center Operations Ruth Leverenz, 202-267-7369 * Deputy, Paula Lewis, 202-267-7369
ALO	Aviation Logistics Organization Director, John R. Block, 202-267-7369
ASH	Lynne A. Osmus, 202-267-7211 Deputy, Claudio Manno, 202-267-7211
ADG	Office of Hazardous Materials Director, William Wilkening, Jr., 202-267-9864
AEO	Office of Emergency Operations and Communications Director, Chris Rocheleau, 202-267-8075
AHS	Office of Operations Director, Thomas D. Ryan, 202-267-7211

FAA Officials

Washington Headquarters--(Cont.)

Routing Symbol	Officials
AIN	Office of Internal Security and Investigations Director, Bruce Herron, 202-267-7714
ARP	Associate Administrator for Airports Catherine M. Lang, Acting, 202-267-9471 Deputy, Catherine M. Lang, 202-267-8738
AAS	Office of Airport Safety and Standards Director, David L. Bennett, 202-267-3053
APP	Office of Airport Planning & Programming Director, Dennis E. Roberts, 202-267-8775
AST	Assoc. Adm. for Commercial Space Transportation Patricia Grace Smith, 202-267-7793 Deputy, Dr. George C. Nield, 202-267-7848
AVS	Associate Administrator for Aviation Safety Nicholas A. Sabatini, 202-267-3131 Deputy, Peggy Gilligan, 202-267-7804
AAI	Office of Accident Investigation Director, Steven B. Wallace, 202-267-9612
AAM	Office of Aviation Medicine Director, Frederick Tilton, MD, 202-267-3535
AFS	Flight Standards Service Director, James Ballough, 202-267-8237
AIR	Aircraft Certification Service Director, John J. Hickey, 202-267-8235
AOV	Office of Air Traffic Oversight Director, J. David Canoles, 202-267-5202
AQI	Quality and Integration Director, Vi Lipski, 202-493-5860
ARM	Office of Rulemaking Director, Anthony F. Fazio, 202-267-9677
Duty Officer	(202) 267-3333

FAA Officials

Major Field Organizations

Routing Symbol	Officials
AAL*	Alaskan Region, Regional Administrator Bob Lewis, Acting, 907-271-5645 222 West 7th Avenue, Box 14 Anchorage, Alaska 99513-7587 Duty Officer, 907-271-5936
ACE	Central Region, Regional Administrator Christopher Blum, 816-329-3050 901 Locust Kansas City, Missouri 64106 Duty Officer, 816-329-3000
ACT*	William J. Hughes Technical Center, Director Wilson N. Felder, Ph.D., 609-485-6641 Atlantic City International Airport New Jersey 08405 Duty Officer, 609-485-6482
AEA	Eastern Region, Regional Administrator Manny Weiss, 718-553-3000 1 Aviation Plaza 159-30 Rockaway Blvd. Jamaica, New York 11434-4809 Duty Officer, 718-553-3100
AGL	Great Lakes Region, Regional Administrator Christopher Blum, 847-294-7294 2300 East Devon Avenue Des Plaines, Illinois 60018 Duty Officer, 847-294-8400
AMC	Mike Monroney Aeronautical Center, Director Lindy Ritz, 405-954-4521 6500 South MacArthur Oklahoma City, Oklahoma 73125 Duty Officer, 405-954-3583

FAA Officials

Major Field Organizations--(Cont.)

Routing Symbol	Officials
ANE	New England Region, Regional Administrator Amy Lind Corbett, 781-238-7020 12 New England Executive Park Burlington, Massachusetts 01803 Duty Officer, 781-238-7001
ANM	Northwest Mountain Region, Regional Administrator Douglas R. Murphy, 425-227-2001 1601 Lind Avenue, S.W. Renton, Washington 98055-4056 Duty Officer, 425-227-2000
ASO*	Southern Region, Regional Administrator Eddie Thomas, Acting, 404-305-5000 1701 Columbia Avenue College Park, Georgia 30337 Duty Officer, 404-305-5180
ASW	Southwest Region, Regional Administrator Ava L. Wilkerson, 817-222-5001 2601 Meacham Blvd. Ft. Worth, Texas 76137-4298 Duty Officer, 817-222-5006
AWP	Western-Pacific Region, Regional Administrator William C. Withycombe, 310-725-3550 15000 Aviation Boulevard Hawthorne, California 90261 Duty Officer, 310-725-3300

FAA Officials

International Area Offices

Routing Symbol	Officials
AEU	Europe, Africa, & Middle East Area Office, Director Paul Feldman, 011-322-508-2700 American Embassy, Brussels PSC 82 Box 002 APO AE 09724-1011
ALC	Latin America & Caribbean Area Office, Director Joaquin Archilla, 305-716-3300 8600 NW 36th Street Miami, FL 33166
APC*	Asia-Pacific Area Office, Director Nancy Graham, 011-65-6540-4114 American Embassy 27 Napier Road Singapore 258508

**FEDERAL AVIATION ADMINISTRATION
FLIGHT PLAN 2006-2010**

INCREASED SAFETY

Goal: *Achieve the lowest possible accident rate and constantly improve safety.*

Objectives:

1. Reduce the commercial airline fatal accident rate.
2. Reduce the number of fatal accidents in general aviation.
3. Reduce the risk of runway incursions.
4. Ensure the safety of commercial space launches.
5. Enhance the safety of FAA's air traffic systems.

Performance Targets:

Obj. 1 Reduce the airline fatal accident rate by 80% from the 1994-1996 baseline to a three-year rolling average rate of 0.010 per 100,000 departures by FY 2007.

Obj. 1 Reduce the three-year rolling average fatal accident rate below 0.010 per 100,000 departures by FY 2010.

Obj. 2 By FY 2009, reduce the number of general aviation and nonscheduled Part 135 fatal accidents to no more than 319 (from 385, which represents the average number of fatal accidents for the baseline period of 1996-1998).

Obj. 2 By FY 2009, reduce accidents in Alaska for general aviation and all Part 135 operations from the 2000-2002 average of 130 accidents per year to no more than 99 accidents per year.

As of 10/01/05

Source: APO-120
(202) 267-3220

INCREASED SAFETY Performance Targets (Continued)

Obj. 3 By FY 2010, reduce Category A and B (most serious) runway incursions to a rate of no more than 0.450 per million operations.

Obj. 4 No fatalities, serious injuries, or significant property damage to the uninvolved public during licensed space launch and reentry activities.

Obj. 5 By FY 2010, reduce Category A and B (most serious) operational errors to a rate of no more than 3.18 per million activities.

Obj. 5 By FY 2010, apply Safety Risk Management to at least 22 significant changes in the NAS.

GREATER CAPACITY

Goal: Work with local governments and airspace users to provide capacity in the United States airspace system that meets projected demand in an environmentally sound manner.

Objectives:

1. Increase capacity to meet projected demand.
2. Increase or improve airspace capacity in the eight major metropolitan areas and corridors that most affect total system delay: For FY 2006, those areas are: New York, Philadelphia, South Central Florida, Chicago, Washington/Baltimore, Atlanta, Los Angeles Basin, and San Francisco Bay area.
3. Increase on-time performance of scheduled carriers.
4. Address environmental issues associated with capacity enhancements.

Performance Targets:

Obj. 1 Achieve an average daily airport capacity of 104,338 arrivals and departures per day by 2008 and maintain through FY 2010 at the 35 OEP airports.

Obj. 1 Commission as many as eight new runway projects, increasing the annual service volume of the 35 OEP airports by at least 1% annually, measured as a five-year moving average, through FY 2010.

Obj. 1 Sustain adjusted operational availability at 99.5% for the reportable facilities that support the 35 OEP airports through FY 2010.

Obj. 2 Achieve an average daily airport capacity for the eight major metropolitan areas of 68,750 arrivals and departures per day by 2010.

Obj. 3 Through FY 2010, maintain an 87.4% on-time arrival for all flights arriving at the 35 OEP airports, no more than 15 minutes late due to NAS related delays.

GREATER CAPACITY Performance Targets (Continued)

Obj. 4 Reduce the number of people exposed to significant noise by 1% per year through FY 2010, as measured by a three-year moving average, from the three-year average for calendar year 2000-2002.

Obj. 4 Improve aviation fuel efficiency per revenue plane-mile by 1% per year through FY 2010, as measured by a three-year moving average, from the three-year average for calendar year 2000-2002.

INTERNATIONAL LEADERSHIP

Goal: *increase the safety and capacity of the global civil aerospace system in an environmentally sound manner.*

Objectives:

1. Promote improved safety and regulatory oversight in cooperation with bilateral, regional, and multilateral aviation partners.
2. Promote seamless operations around the globe in cooperation with bilateral, regional, and multilateral aviation partners.

Performance Targets:

Obj. 1 BY FY 2010, continue to reduce the five-year rolling average commercial air carrier fatal accident rate in key regions or countries experiencing substantial growth in aviation operations by 10% from the 2000-2005 baseline.

Obj. 1 Conclude at least eight (new or expanded) bilateral safety agreements that will facilitate an increase in the ability to exchange aviation products and services by 2010.

Obj. 1 Secure a yearly increase of 20% in external funding for international aviation activities from the United States and international government organizations, multilateral banks, and industry.

Obj. 2 By FY 2010, expand the use of Global Positioning System-based technologies and procedures to five more countries.

ORGANIZATIONAL EXCELLENCE

GOAL: Ensure the success of the FAA's mission through stronger leadership, a better-trained and safer workforce, enhanced cost-control measures, and improved decision-making based on reliable data.

Objectives:

1. Make the organization more effective with stronger leadership, increased commitment of individual workers to fulfill organization-wide goals, and a better prepared, better trained, safer, diverse workforce.
2. Improve financial management while delivering quality customer service.
3. Make decisions based on reliable data to improve our overall performance and customer satisfaction.

Performance Targets:

Obj. 1 Increase Employee Attitude Survey scores in the areas of management effectiveness and accountability by at least 5%.

Obj. 1 Reduce the time it takes to fill mission-critical positions by 25% over the FY 2003 baseline.

Obj. 1 Reduce the total workplace injury and illness case rate to no more than 2.85 per 100 employees by the end of FY 2006, representing a cumulative 3% annual reduction from the FY 2003 baseline (3.12) set in the Safety, Health and Return to Employment (SHARE) Presidential initiative.

Obj. 1 Reduce grievance processing time by 25%.

Obj. 1 Maintain air traffic controller annual hiring within 5% of the Air Traffic Controller Workforce Hiring Plan.

Obj. 2 Close out 85% of eligible cost reimbursable contracts during each fiscal year.

Obj. 2 Each FAA organization will contribute at least one measurable and significant cost reduction and/or productivity improvement activity each year, including but not limited to, cost efficiencies in the areas of: Strategic sourcing for selected products and services; Complete consolidation of facilities and services such as accounting offices, real property management,

ORGANIZATIONAL EXCELLENCE Performance Targets (Continued)

helpdesks, and Web services; and, Elimination or reduction of FAA use of obsolete technology by either removing from service or transferring from federal operation 100 Nav aids.

Obj. 2 Obtain an unqualified opinion on the agency's financial statements (Clean Audit with no material weaknesses) each fiscal year.

Obj. 3 By FY 2008, 90% of major system acquisition investments are within 10% of annual budget and maintain through FY 2010.

Obj. 3 By FY 2008, 90% of major system acquisition investments are on schedule and maintain through FY 2010.

Obj.3 Increase agency scores on the American Customer Satisfaction Index.

Obj.3 Achieve zero cyber security events that significantly disable or degrade FAA services.