

## What Is The Compliance Date?

- Existing Sources: December 26, 2007.
- New Sources: Upon initial startup.

## What Are The Permitting Requirements?

- This area source category is exempt from Title V.

## What Are the Impacts?

- The only cost associated with the area source rule is for initial notifications and inspections, estimated to be \$390 per facility. This is a one-time cost.
- Emissions of HAP metals from this industry are already well-controlled as a result of existing State or local standards, permitting requirements, and/or industry practices. This area source rule is not expected to change the level of existing emissions control.

## What Records Are Required?

### Reporting:

- Initial Notification due no later than 120 days after publication of rule in the Federal Register.
- Affected sources not required to conduct a performance test must submit Notification of Compliance Status no later than 120 days after publication of rule in the Federal Register.
- Affected sources required to conduct a performance test must submit Notification of Compliance Status, including performance test results, within 60 days of completion of the performance test.
- No ongoing compliance reports are required beyond Title V Requirements.

### Recordkeeping:

- Records to include copies of notifications submitted to EPA and records of monitoring and inspection.
- Records to be maintained in a form suitable and readily available for expeditious review.

## You can also contact your Regional EPA air toxics office at the following numbers:

Address	States	Website/ Phone Number
Region 1 1 Congress Street Suite 1100 Boston, MA 02114-2023	CT, MA, ME, NH, RI, VT	<a href="http://www.epa.gov/region1">www.epa.gov/region1</a> (888) 372-7341 (617) 918-1650
Region 2 290 Broadway New York, NY 10007-1866	NJ, NY, PR, VI	<a href="http://www.epa.gov/region2">www.epa.gov/region2</a> (212) 637-4023
Region 3 1650 Arch Street Philadelphia, PA 19103-2029	DE, MD, PA, VA, WV, DC	<a href="http://www.epa.gov/region3">www.epa.gov/region3</a> (215) 814-2068
Region 4 Atlanta Federal Center 61 Forsyth Street, SW Atlanta, GA 30303-8960	FL, NC, SC, KY, TN, GA, AL, MS	<a href="http://www.epa.gov/region4">www.epa.gov/region4</a> (404) 562-9131 (800) 241-1754
Region 5 77 West Jackson Blvd. Chicago, IL 60604-3507	IL, IN, MI, WI, MN, OH	<a href="http://www.epa.gov/region5">www.epa.gov/region5</a> (312) 886-6812 (312) 353-6684 (312) 886-6798
Region 6 1445 Ross Avenue Suite 1200 Dallas, TX 75202-2733	AR, LA, NM, OK, TX	<a href="http://www.epa.gov/region6">www.epa.gov/region6</a> (800) 887-6063 (214) 665-7250 (214) 665-7224
Region 7 901 North Fifth Street Kansas City, KS 66101	IA, KS, MO, NE	<a href="http://www.epa.gov/region7">www.epa.gov/region7</a> (800) 223-0425 (913) 551-7003
Region 8 1595 Wynkoop St. Denver, CO 80202-1129	CO, MT, ND, SD, UT, WY	<a href="http://www.epa.gov/region8">www.epa.gov/region8</a> (800) 227-8917* (303) 312-6460
Region 9 75 Hawthorne Street San Francisco, CA 94105	CA, AZ, HI, NV, GU, AS, MP	<a href="http://www.epa.gov/region9">www.epa.gov/region9</a> (415) 947-8715
Region 10 1200 6 <sup>th</sup> Ave. Suite 900, AWT-107 Seattle, WA 98101	AK, ID, WA, OR	<a href="http://www.epa.gov/region10">www.epa.gov/region10</a> (800) 424-4372* (206) 553-6220

\* For sources within the Region only.

## For More Information

This brochure is a general guide only; review the rule for your specific requirements at:

<http://www.epa.gov/ttn/atw/area/arearules.html>

For more information on state requirements, please contact your state representatives at:  
[http://www.epa.gov/ttn/atw/area/table\\_state\\_contacts.doc](http://www.epa.gov/ttn/atw/area/table_state_contacts.doc) or,  
<http://www.4cleanair.org/contactUsaLevel.asp>



# Summary of Regulations Controlling Air Emissions from the SECONDARY NONFERROUS METALS PROCESSING INDUSTRY



## NATIONAL EMISSION STANDARDS FOR HAZARDOUS AIR POLLUTANTS NESHAP (SUBPART TTTTTT)

## FINAL RULE



# SECONDARY NONFERROUS METALS PROCESSING (SUBPART TTTTTT)

## What Is An Area Source?

- Any source that is not a major source. (A major source is a facility that emits, or has the potential to emit in the absence of controls, at least 10 tons per year (TPY) of individual hazardous air pollutants (HAP) or 25 TPY of combined HAP.)

## Who Does This Rule Apply To?

- All secondary nonferrous metals processing facilities that are area sources. Secondary nonferrous metals processing facility means a brass and bronze ingot making, secondary magnesium processing, or secondary zinc processing plant that uses furnace melting operations to melt post-consumer nonferrous metal scrap to make products including bars, ingots, and blocks, or metal powders.

## What Am I Required To Do?

### Control Requirements

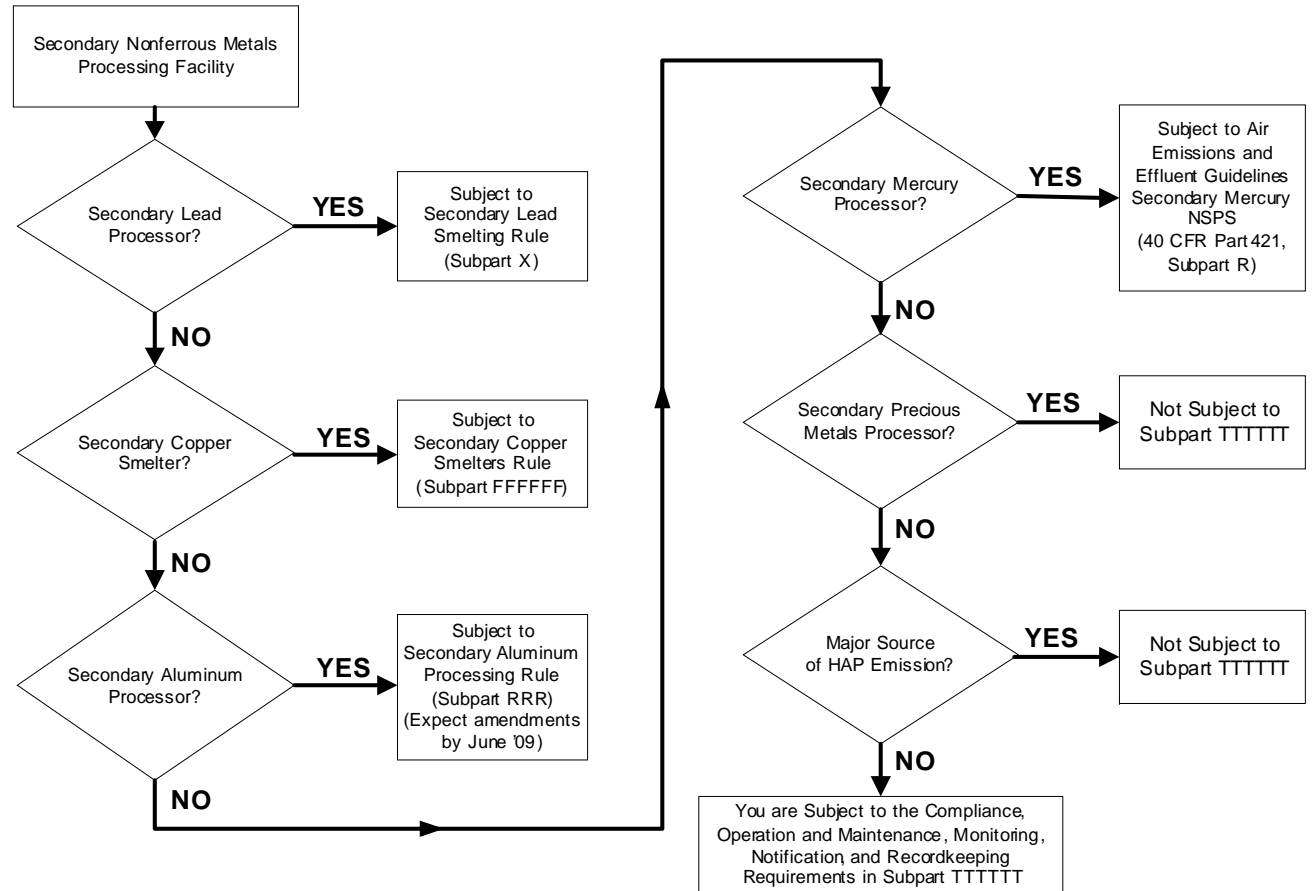
#### Existing Furnaces and Zinc Crushers:

- Install and properly operate a baghouse achieving at least 99% efficiency or an outlet PM limit  $\leq 0.015$  gr/dscf.

#### New Furnaces and Zinc Crushers:

- Install and properly operate a baghouse achieving at least 99.5% efficiency or an outlet PM limit  $\leq 0.010$  gr/dscf.

## Regulatory Flowchart (Secondary Nonferrous Metals Processing Industry)



## Monitoring Requirements

### Existing Furnaces and Zinc Crushers:

- Initial control device inspection and one of the following:
  - Periodic control device inspections consisting of weekly visual inspections and annual equipment inspections **or**
  - Daily 30-minute Method 22 visible emissions test

### New Furnaces and Zinc Crushers:

- Bag leak detectors