

# Directions for Applying the Wind Arrow Legend

## Apply the wind arrow symbology

1. Open the wind layer properties: Right click on the layer name and select Properties. Select the Symbology tab. Then select the Categories, Unique Values menu on the left. Under the Value Field pull down menu, select the wind speed attribute (Figure 1). In the example this is given as wndspd\_071115\_0600. WindSpd, where “WindSpd” represents the wind speed attribute.

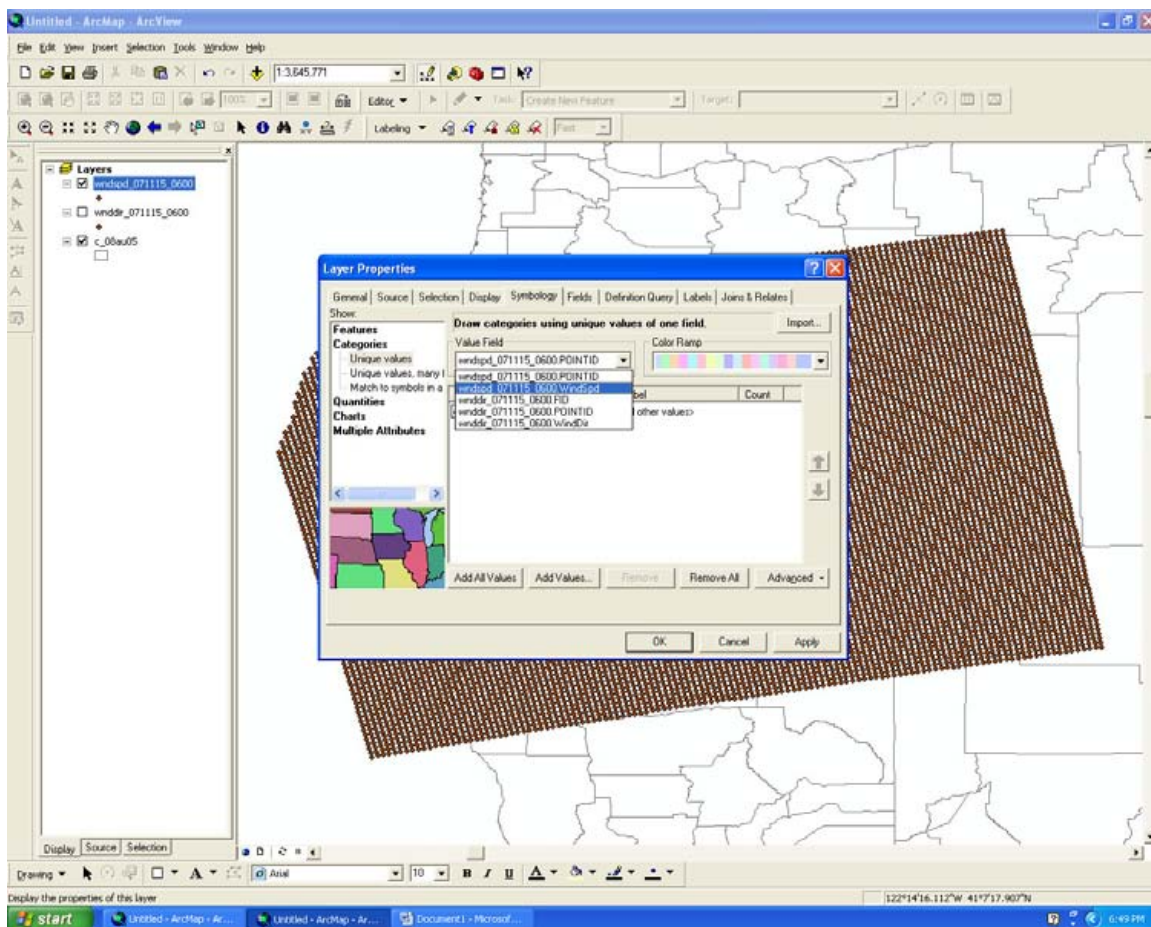


Figure 1: Layer properties menu – select wind speed attribute for the “Value Field” option.

2. Next click on the Advanced tab in the right corner and select Rotation (see Figure 2).

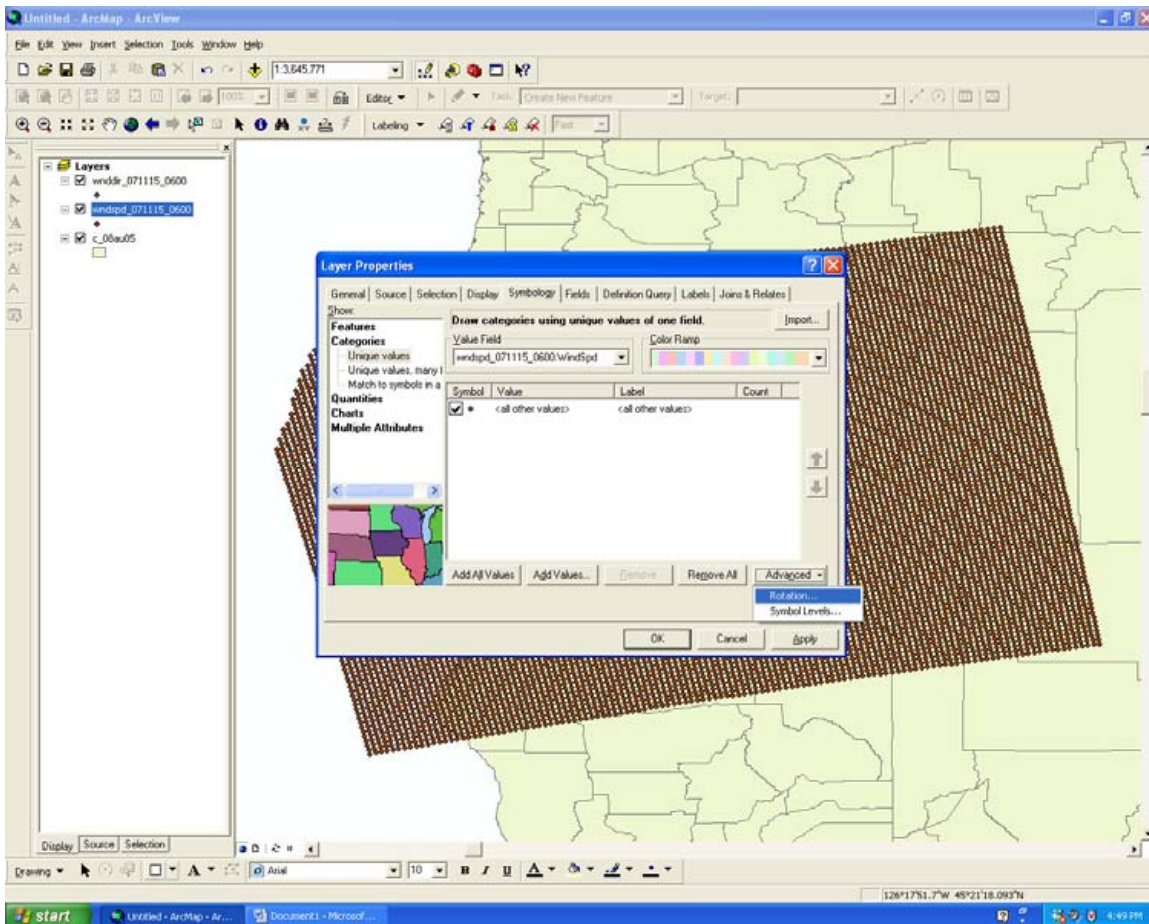


Figure 2: Select the Rotation option from the Advanced tab.

- Now, we need to apply the wind direction to the symbology so that the arrows, once applied, are rotated according to the wind direction. From the Rotation window, as shown in Figure 3, select the appropriate wind direction layer name from the pull down menu. In the example this is given as winddir\_071115\_0600.WindDir, where “WindDir” represents the wind direction attribute. Also be sure that the “geographic” option is highlighted. Then, select OK. This will return you to the Layer Properties window.

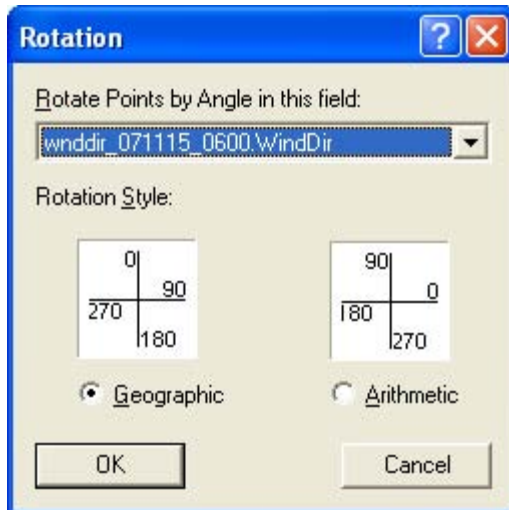


Figure 3: Rotation Window.

4. Now we can import the wind arrow legend. Click on the Import tab at the top of the Layer Properties window. An Import Symbology window will appear (Figure 4). Click on the folder button and navigate to the wind.lyr file and select it (Figure 5). Then hit Add.

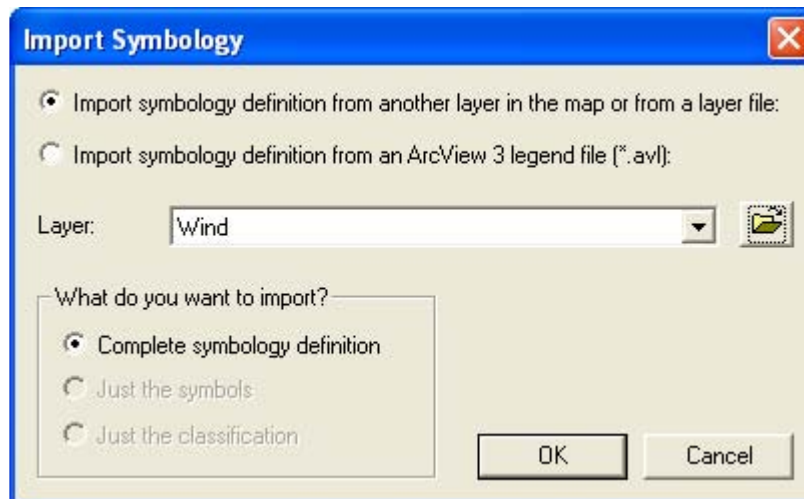


Figure 4: Import Symbology window.

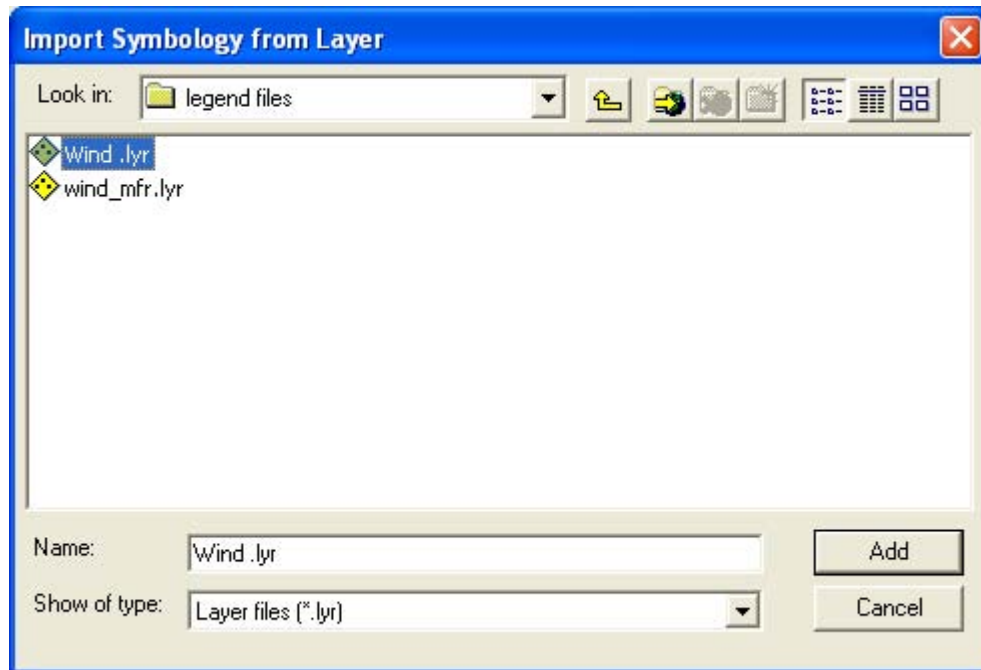


Figure 5: Select the appropriate wind arrow legend, wind.lyr in this example.

5. Then the Import Symbology Dialog window will open (Figure 6). Under the pull down menu for value field, select the wind speed attribute in the layer. In the example this is given as wndspd\_071115\_0600.WindSpd, where “WindSpd” represents the wind speed attribute. Then select, OK.

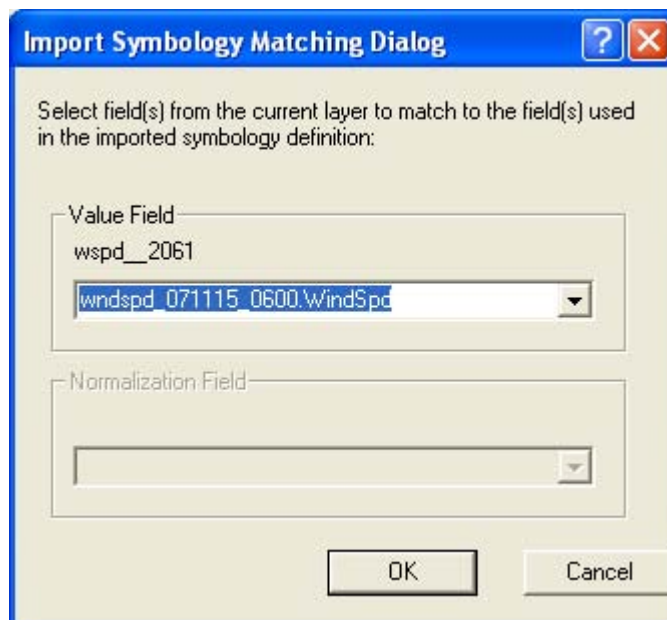


Figure 6: Import Symbology Matching Dialog window.

6. Lastly, back in the Layer Properties window, select Apply or OK (Figure 7).

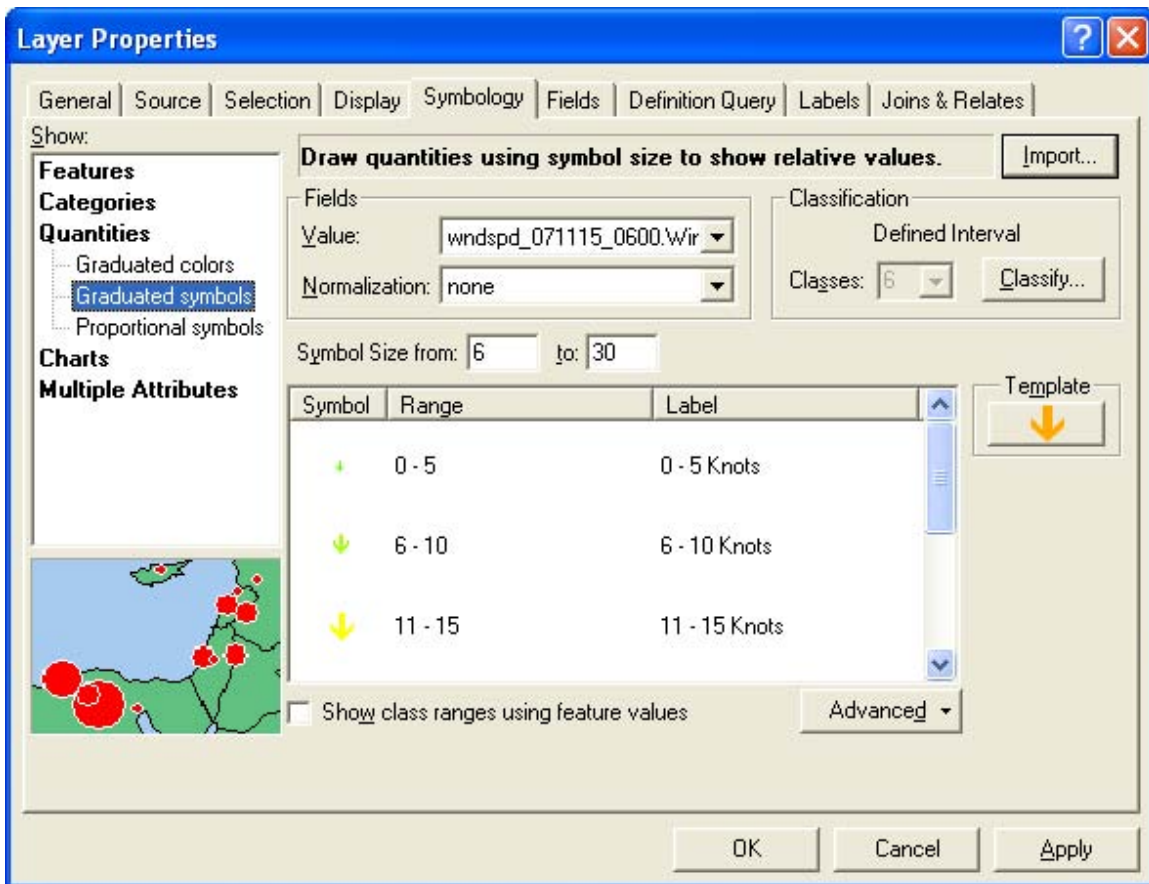


Figure 7: The wind arrow legend is shown in the Layer Properties window. Select OK or Apply to apply it to the data.

Now, wind arrows are visible in which the arrow points in the direction that the wind is blowing towards and the wind speed is represented by a set of color-coded and sized arrows, as shown in Figure 8, below.

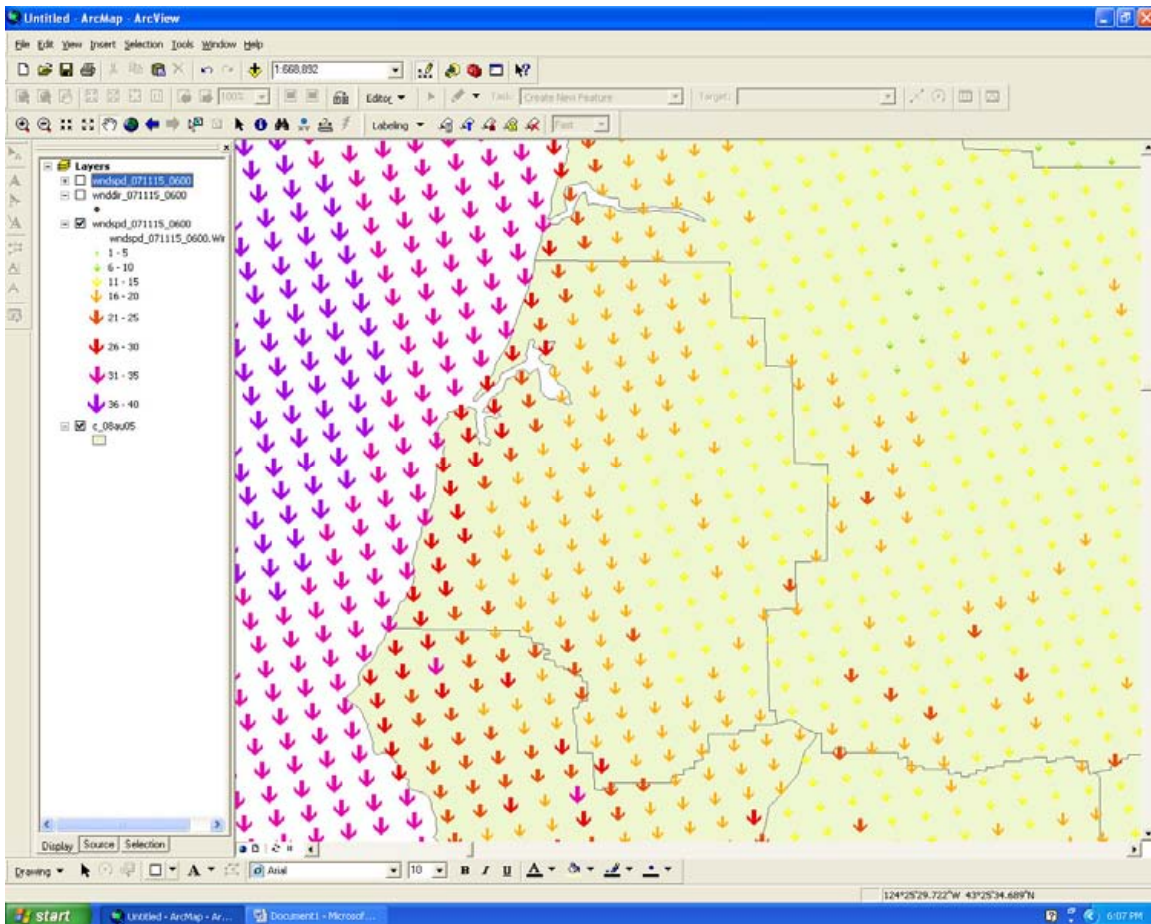


Figure 8: Wind data with the wind arrow legend applied to it.

Once the wind data is available in wind arrow form, useful overlays, such as topography, cities and other layers may be added for data analysis (Figure 9).

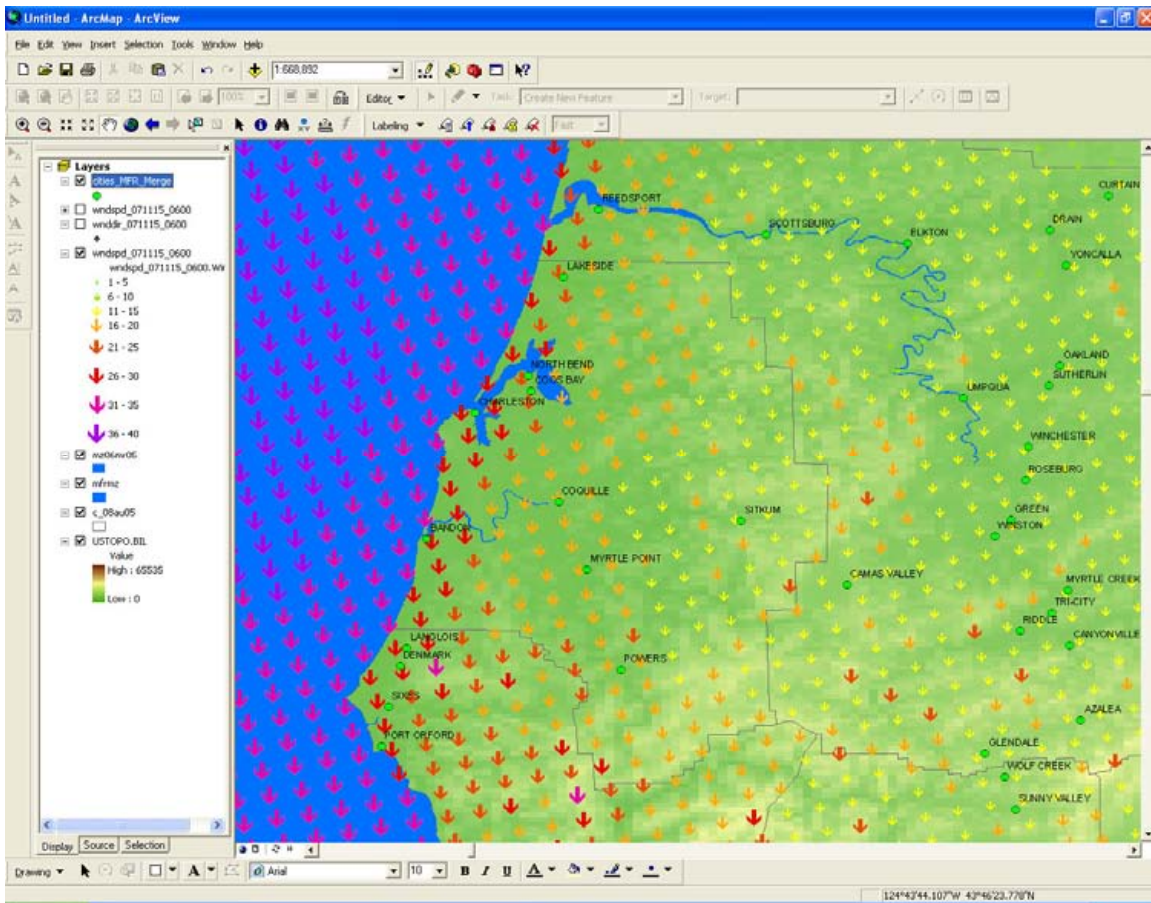


Figure 9: Add overlays such as topography, cities, or other layers to assist with analysis of the wind data.

**NOTE:** When applying the layer file if the following error occurs when using ESRI software **Error: The import geometry type does not match destination geometry type** see the following technical article from the ESRI support web pages.

## **Error: The import geometry type does not match destination geometry type**

Article ID: 22484

**Software:** **ArcGIS - ArcEditor** 8.1, 8.1.2, 8.2, 8.3, 9.0, 9.1, 9.2, 9.3 **ArcGIS - ArcInfo** 8.0.2, 8.1, 8.1.2, 8.2, 8.3, 9.0, 9.1, 9.2, 9.3 **ArcGIS - ArcView** 8.1, 8.1.2, 8.2, 8.3, 9.0, 9.1, 9.2, 9.3

**Platforms:** **Windows** NT 4.0, 2000, XP

### **Error Message**

This error message occurs when you attempt to import layer symbology into ArcMap:

"The import geometry type does not match destination geometry type"

### **Cause**

This message means that the .lyr file selected has a different geometry type than the current layer. You can only import symbology from a .lyr file of the same geometry type. For example, for a polygon layer you can only import symbology from a polygon.lyr file.

This message may also appear if you try to import symbology from a .lyr file with a broken data path. You cannot import symbology from .lyr files with broken data paths.

### **Solution or Workaround**

1. Open ArcCatalog and browse to the location of the .lyr file.
2. Double-click on the .lyr file to open the Layer Properties dialog box.
3. Select the Source tab.
4. Click Set Data Source and browse to the correct data source.
5. Click OK to close the Layer Properties dialog box.
6. Open ArcMap.
7. You will now be able to import symbology from the .lyr file.

<http://support.esri.com/index.cfm?fa=knowledgebase.techarticles.articleShow&d=22484>