

Historic Landscape DIRECTORY

D-776
File:
NPS General

PLEASE RETURN TO:
TECHNICAL INFORMATION CENTER
DENVER SERVICE CENTER
NATIONAL PARK SERVICE

Prepared by the
U.S. Department of the Interior
National Park Service
Cultural Resources
Preservation Assistance



ON MICROFILM **Color Scans**

2/5/2003

In collaboration with
The Catalog of Landscape Records in the United States, Wave Hill
US ICOMOS Historic Landscapes Committee

Cover Photograph:
1912 view of the Hudson River and Palisades from Wave Hill, Bronx, New York
Courtesy of Catha Rambusch, The Catalog of Landscape Records in the United States

Table of Contents

Acknowledgements	ii
Introduction	viii
CHAPTER 1 National and Regional Organizations	3
National Organizations	4
Federal Agencies	4
Private Organizations	7
Regional Organizations	14
CHAPTER 2 State and Local Organizations	17
CHAPTER 3 Educational Programs	63
Landscape Architecture	64
Historic Preservation	70
Continuing Education	73
CHAPTER 4 Resources for Historic Landscape Research	75
Libraries and Archives	76
Computerized Directories	81
Journals and Publications	82
Professional Journals	82
Historic Periodicals	83
Popular Magazines	83
CHAPTER 5 Sources of Information on Historic Plant Materials	85
Organizations	86
Publications	88
Index	89
Information Update Form	95

Introduction

This Directory focuses specifically on organizations or institutions currently involved in historic landscape preservation in the United States. It includes ongoing work in public agencies as well as private preservation organizations and academic institutions. Together, these groups and their libraries, archives, programs, and sites contribute greatly to the field of landscape preservation nationwide. The programs included in this publication relate to a broad range of historic landscapes, including designed landscapes, vernacular landscapes, historic settings, and battlefields. Information on ethnographic programs is not included in this publication.

The genesis for this publication came from a spring 1991 meeting of the Historic Gardens and Sites Committee of US ICOMOS, an international organization devoted to the recognition and protection of cultural properties. There, the need for information on organizations, agencies, and institutions active in historic landscape preservation was identified. From this meeting, a group of volunteers was formed to begin to compile the information.

The resulting publication is, in a sense, a companion to the annotated bibliography, *Preserving Historic Landscapes*, published by the National Park Service in 1990. This publication is intended to provide information on Federal, State, and local public agencies; private preservation organizations; educational programs; sources of information for research; and journals or magazines. All of these organizations, institutions, and publications provide some level of information or administer programs that address historic landscape preservation in the U.S. Also included

are sources of information on historic plant materials and historic landscape books. It is intended for a general audience, including preservation professionals, historic property managers, landscape architects, public officials, and academics.

This Directory is not the first preservation directory. Readers may be familiar with the *Landmark Yellow Pages*, published by the National Trust for Historic Preservation, the *Preservation Directory* produced by the Preservation League of New York, and *The Olmsted Parks Preservation Directory* published by the Buffalo Friends of Olmsted Parks. These three directories are very helpful and were used extensively as sources for this publication. Unlike the first two, this directory is both annotated and focused specifically on historic landscapes. It is the first version of a directory that will be updated and revised regularly, as new information becomes available and as comments are received from this publication.

The information included has been obtained, by and large, through telephone interviews with the organizations and institutions listed. Due to the short timetable for production, it is likely that some organizations may have been omitted. For this reason, we have included a form for revisions, corrections, additions, and deletions, which we hope readers will complete and return to the National Park Service.

The emphasis of this Directory is on innovative programs and sources of information that relate directly to the field of historic landscape preservation. As a result, it includes information on organizations and publications from a number of related disciplines including open space preservation, horticulture, architectural history, in addition to the more well-known fields of landscape architecture and historic preservation. However, all of the entries have been evaluated to determine

whether or not they have some relationship to landscape preservation, at a local, state, or national level.

Even though this document is broad in focus, it is by no means comprehensive. Throughout the information-gathering process, the compilers had to make difficult decisions about which organizations to include. For example, the number of general "open space preservation" organizations that address resources nationally, regionally, statewide or in local communities is staggering. By and large, these organizations were not included unless their work entailed specific historic preservation projects or they were involved in geographic areas with highly significant historic landscapes.

The first chapter of the Directory describes national and regional agencies and organizations, both public and private whose mandate or services contribute to the field of historic landscape preservation in the U.S. Information included here ranges from Federal agencies such as the National Park Service to national professional organizations including the American Society of Landscape Architects.

The longest section is Chapter 2, which lists State and local agencies and organizations. This chapter is divided into states in alphabetical order. Every State Historic Preservation Office (SHPO) is listed here and is followed by other state agencies, local governments, and private organizations.

Chapter 3 includes a list of academic programs that offer curricula in landscape architecture or historic preservation, as well as continuing education programs, with applicable courses. This is followed by Chapter 4: Sources of Information for Historic Landscape Research, which contains an annotated list of notable archives, repositories, and libraries. These collections are useful sources of books, journals dealing with historic landscapes, or contain the historic records of individuals (such as

landscape architects) whose work may be of interest to researchers. Publications that feature articles on historic preservation are listed in this chapter. These vary widely from professional journals to popular magazines. This section is not annotated. The last section of the Directory includes sources of information for locating historic plant materials.

A few types of information - such as newsletters - are conspicuously missing from this publication. Also missing are organizations specifically focused on individual historic properties. Similarly, we have not included information on historic landscapes that are open to the public. Information on specific historic landscapes will be gathered in 1991-92 and, if possible, included in a later edition of the Directory.

CHAPTER 1

National and Regional Organizations



Barn at "Roseland," in Woodstock, Connecticut
Photo by Sara Chase, NPS files

This chapter describes a wide variety of information on both public and private organizations. The first section includes national organizations and is divided into Federal agencies and private organizations. The agencies and organizations listed here vary tremendously. For example, nearly all Federal agencies are involved in historic preservation work to some degree and all have a designated historic preservation officer. We have, however, included only agencies that are involved in landscape-related projects or issues. Organizations that relate to historic plants are listed in the last chapter: Sources of Information on Historic Materials. The second section of this chapter features regional organizations. These organizations provide programs that relate to more than one state. Very few organizations are included here though the regional offices of the NPS and the National Trust for Historic Preservation are listed. However, many of the national organizations have local or regional chapters, which may be found by contacting the national headquarters.

National Organizations

1. Federal Agencies

Advisory Council on Historic Preservation
1100 Pennsylvania Avenue, NW
Suite 803
Washington, DC 20004
(202) 786-0503

The Advisory Council is an independent Federal agency that was created by the National Historic Preservation Act of 1966. The Council, in conjunction with the State Historic Preservation Officers, reviews the impact of proposed Federal actions on properties that are listed or are eligible for listing in the National Register of Historic Places and advises the President and Congress on preservation matters. It produces a *Report to the President and Congress* annually.

Department of Agriculture
14th Street and Jefferson Drive, SW
Washington, DC 20250
(202) 447-8732

Forest Service
P.O. Box 96090
Washington, DC 20090-6090
(202) 205-1706

The Forest Service administers a visual management system that identifies significant landscapes that possess historic, cultural, and scientific value.

Natural Germplasm Resources Laboratory
10300 Baltimore Avenue
Beltsville, Maryland 20705-2350
(301) 344-3235

The Natural Germplasm Resources Laboratory is responsible for a number of activities in support of the entire national germplasm system. It links 25 centers across the country which maintain, evaluate, and distribute agricultural plant species. Species collection has been on going since 1898. It distributes germplasm to both public and private scientific organizations working to improve crop species.

United States National Arboretum
3501 New York Avenue, NE
Washington, DC 20002
(202) 475-4815

The National Arboretum is administered by the Agricultural Research Center of the Department of Agriculture. The Arboretum conducts research and provides educational programs on plants in many contexts. The forty-acre site, located in northeast Washington, D.C., contains a wide range of gardens and is a designated germplasm repository for ornamental woody plants. It also conducts a seed and plant distribution program for native plants. A list of special programs is available on request.

Department of the Interior

Bureau of Land Management (BLM)
18th and C Streets, NW
Room 3360
Washington, DC 20210
(202) 208-5717

The Bureau of Land Management manages 270 million acres of public land and another 300 million acres of mineral estates under land managed by other government agencies or owned by private interests.

National Park Service (NPS)
P.O. Box 37127
Washington, DC 20013-7127

The Cultural Resource Programs of the National Park Service are responsible for developing national policy on the preservation of cultural resources in the U.S., including the resources within the National Park System. The NPS also provides policy and technical information on the identification, evaluation, and treatment of historic properties managed by other Federal agencies, State and local governments, and private organizations or individuals. Regional offices of the NPS are listed under regional organizations.

Cultural Resource Programs

History Division
P.O. Box 37127, Mail Stop 418
Washington, DC 20013-7127
(202) 343-8174

The History Division administers the National Historic Landmarks Program. This office studies historical resources within the National Park System and prepares administrative histories of parks

in order to document and interpret the institutional history of the National Park Service. It administers the National Landmarks Survey to study, identify, and manage the process of designating of National Historic Landmarks that are owned and managed by individuals or organizations other than NPS. The office also prepares studies nominating U.S. historic and archeological sites to the World Heritage list.

Interagency Resources Division
P.O. Box 37127, Mail Stop 413
Washington, DC 20013-7127
(202) 343-9500

The Interagency Resources Division assists Federal, State, and local governments and other public and private groups, organizations, and individuals in a wide range of historic preservation activities. This division establishes standards for Federal agencies, State, and local governments (including units of NPS), and the private sector in implementing historic preservation planning, surveying, evaluation, and registration. It administers and maintains the National Register of Historic Places, and reviews and accepts nominations and determinations of eligibility requests. It also maintains the National Register Information System (NRIS), a database of National Register listings. The American Battlefield Protection Program provides technical assistance to public and private groups for preserving historic battlefields.

National Register of Historic Places
(202) 343-9536

The National Register has produced two Bulletins that address designed historic and rural historic landscapes specifically. A third bulletin on historic setting is presently being developed.

Preservation Planning Branch
(202) 343-9505

Park Historic Architecture Division
P.O. Box 37127, Mail Stop 422
Washington, DC 20013-7127
(202) 343-8146

The Park Historic Architecture Division conducts activities related to the preservation of the historic and prehistoric structures and cultural landscapes within the units of the National Park System. This office develops, interprets, and monitors the application of policies, guidelines, and standards, and develops technical preservation techniques and methods. It also maintains the List of Classified Structures, a management inventory of all historic and prehistoric structures in the park System, and the Cultural Resources Management Bibliography, a listing of reports that address cultural resources in the National Park System.

Preservation Assistance Division
P.O. Box 37127, Mail Stop 424
Washington, DC 20013-7127
(202) 343-9575

The Preservation Assistance Division conducts a variety of activities to guide Federal agencies, states, the National

Park Service, and the general public in historic preservation treatment work. This office administers the Preservation Tax incentives program and the Historic Preservation Fund grants-in-aid program. The Preservation Assistance Division establishes treatment standards and guidelines and develops, publishes and distributes technical preservation information. This office also develops and funds technical training programs in cooperation with other agencies and nonprofit organizations.

Technical Preservation Services Branch
(202) 343-9578

TPS has produced a number of technical publications including the annotated bibliography, *Preserving Historic Landscapes*. A Catalog of Historic Preservation Publications is available at no cost. The Branch is also developing the Secretary of the Interior's Guidelines for the Treatment of Historic Landscapes.

Grants Administration Branch
(202) 343-9566

The Historic American Buildings Survey (HABS)
Historic American Engineering Survey (HAER)
National Park Service
P.O. Box 37127, Mail Stop 429
Washington, DC 20013-7127
(202) 343-9606

HABS/HAER produces measured drawings, large format photographs, and written histories on historic sites and structures significant to the architectural,

engineering, maritime, and industrial heritage of the United States. The HABS/HAER collections are accessible to the public in the Library of Congress, Prints and Photographs Division (see libraries and archives).

Curatorial Services Division
P.O. Box 37127, Mail Stop 408
Washington, DC 20013-7127
(202) 343-8138

Curatorial Services develops and coordinates policies for the management of museum collections within the National Park System.

Archeological Assistance Division
P.O. Box 37127, Mail Stop 436
Washington, DC 20013-7127
(202) 343-4101

This division provides technical assistance on the identification, evaluation, and preservation archeological resources including limited assistance related to the recovery of archeological information threatened with damage or destruction by Federal undertakings.

Anthropology Division
P.O. Box 37127, Mail Stop 434
Washington, DC 20013-7127
(202) 343-8161

This division provides guidance and policy related to the archeological and ethnographic resources within the National Park System.

Planning and Development Programs

Recreation Resources Assistance Division
P.O. Box 37127, Mail Stop 782
Washington, D.C. 20013-7127
(202) 343-3780

National Rivers Policy and Statistics Branch

This Program calls on Federal and State agencies and the private sector to protect the nation's outstanding wild, scenic, and recreational rivers. It maintains the Nationwide Rivers Inventory, which identifies potential river resources for study, and consults with other Federal agencies to mitigate program impacts on rivers.

National Trails System Branch

This program is working on a nationwide system of trails and recreation corridors. This is accomplished by gathering current data on trail resources nationwide and by developing plans at state and regional levels. The Service provides assistance throughout the country in identifying and converting abandoned railroad corridors to public trails.

Department of Transportation
Federal Highway Administration
Office of Environment and Planning
400 7th Street HEP-42, SW
Washington, DC 20590
(202) 366-9173

The Federal Highway Administration has published *The National Scenic Byways Study*. This study was initiated to inventory the programs in place in the United States, and also to discuss the criteria for designating Scenic Byways.

Library of Congress
American Folklife Center
Washington, DC 20540
(202) 707-6590

The Folklife Center assists local governments, nonprofit organizations, and individuals in preserving and presenting American folklife. The Library of Congress collection includes recorded and manuscript collections in the Archive of Folk Culture. It produces the *Folklife Center News*, quarterly.

National Endowment for the Arts (NEA)
1100 Pennsylvania Avenue, NW
Washington, DC 20506
(202) 682-5442

The National Endowment for the Arts, through its Design Arts Program, awards grants to individuals, nonprofit organizations, and local governments for projects that promote excellence in architecture, landscape architecture, and community design. A number of historic preservation projects have been funded by NEA.

U.S. Army Corps of Engineers
Office of Environmental Policy
CECW-RE
20 Massachusetts Avenue, NW
Washington, DC 20314
(202) 272-0166

The U.S. Army Corps of Engineers manages and executes property activities and programs including planning, design, construction, operation, and maintenance. Its programs protect and preserve the navigable waters and related resources of the United States.

U.S. Government Printing Office
Superintendent of Documents
Washington, DC 20402
(202) 275-3050

The G.P.O. issues most Federal publications. It makes subject bibliographies available on request.

2. Private Organizations

Alliance for Historic Landscape Preservation
82 Wall Street, Suite 1105
New York, NY 10005
(617) 491-3727

Formed in 1978, this group provides a forum for communication and exchange of information on the preservation and conservation of historic landscapes. Alliance meetings focus on case studies and provide a scholarly exchange as well as exploring the issues of national preservation leadership, local initiatives, and the future of landscape preservation. The Alliance has developed a cooperative agreement with the NPS to assist in the development of standards and guidelines for the treatment of historic landscapes.

American Association of Botanical Gardens and Arboreta
786 Church Road
Wayne, PA 19087
(215) 688-1120

The AABGA is a non-profit membership organization serving American botanical gardens, arboreta, and their professional staff on behalf of the public and the horticulture profession. Many members are historic gardens, or are individuals interested in preserving their garden's history. Regional chapters can be found by calling the national office.

American Association for State and Local History
172 Second Avenue North, Suite 102
Nashville, TN 37201
(615) 255-2971

AASLH is a membership organization which represents history museums, archives, and historical societies. The AASLH offers technical assistance. It publishes *History News*, a bimonthly magazine, and *History News Dispatch*, a monthly newsletter. AASLH has also issued several books and technical papers on topics which relate to historic landscape preservation.

American Association of Nurserymen
1250 I Street, Suite 500
Washington, DC 20005
(202) 789-2900

Established in 1876, this membership organization has various committees that are concerned with issues related to landscape architecture and related professions.

American Battlefield Protection Foundation
1225 I Street, NW
Washington, DC 20005
(No phone number at date of publication)

This newly formed nonprofit organization works in conjunction with the Civil War Sites Advisory Commission to raise money to acquire threatened Civil War battlefield sites.

The American Canal Society
35 Towana Road
Richmond, VA 23226
(804) 288-1334

This membership organization is a resource of information on the preservation and history of canals, and serves as an umbrella group for the local canal groups. It has published the *Historic American Canal Survey* which documents the history of more than 700 identified canals, and is currently working on a *Historic American Canal Guidebook*. It is also one of the sponsors of an international conference studying canal parks.

America's Great Urban Parks
Office of Management and Development,
Fairmount Park Commission
Memorial Hall, West Park
Philadelphia, Pennsylvania 19131
(215) 685-0043

America's Great Urban Parks is a national coalition of urban park support groups representing the nation's 100 largest cities. Founded in 1989, the organization supports and encourages the preservation of existing urban park land and acquisition of new urban open space.

American Farmland Trust
1920 N Street, NW
Suite 400
Washington, DC 20013
(202) 659-5170

This organization promotes farmland preservation and soil conservation and demonstrates preservation techniques. The Farmland Trust also administers a revolving loan fund for farmland acquisition and

protection. It publishes a newsletter, *American Farmland*, quarterly.

American Horticultural Society
7931 East Boulevard Drive
Alexandria, VA 22308
(703) 768-5700

This national membership organization collects, develops, and disseminates information related to horticulture. It also sponsors conferences.

American Institute of Architects
Historic Resources Committee
1735 New York Avenue NW
Washington, DC 20006
(202) 626-7300

The Historic Resources Committee concentrates its effort on programs relating to the preservation of historic resources and the management of change which affects the cultural environment. The AIA has both State and local chapters.

American Society of Landscape Architects (ASLA)
4401 Connecticut Avenue, NW
Washington, DC 20008-2302
(202) 686-2752

ASLA is the professional membership organization for practicing landscape architects in the U.S. In 1970 the ASLA established the Open Committee on Historic Landscape Preservation. The Committee does annual mailings that include sources of information for landscape preservation, and it holds focus discussions on specific preservation challenges. It issues *Land and History*, a periodic newsletter. The Committee has also sponsored

several historic landscape symposia in collaboration with the NPS. ASLA is presently collaborating with the NPS on a number of projects in historic landscape preservation through a cooperative agreement. These include landscape preservation workshops at the annual ASLA meetings, work on national standards and guidelines, and an educational video on the work of Frederick Law Olmsted and the Olmsted National Historic Site. ASLA also has an active Rural Landscape Committee. There are numerous regional chapters of the ASLA throughout the country.

American Planning Association
1776 Massachusetts Avenue, NW
Washington, DC 20036
(202) 872-0611
For publications write:
1313 East 60th Street
Chicago, IL 60637

This membership organization monitors developments in planning, sponsors educational programs, prepares publications, and lobbies on planning issues. It has committees for rural and small town planning, historic preservation, and environmental planning. APA produces a monthly journal; *Small Town & Rural Planning*, a quarterly newsletter; and *Zoning News*, a monthly newsletter.

Appalachian Trail Conference
P.O. Box 807
Harper's Ferry, WV 25425
(304) 535-6331

This group, through a cooperative agreement with the National Park Service, maintains and manages the Appalachian Trail which stretches from Georgia to Maine, as well as the historic structures and rural landscape along the trail.

Archeological Conservancy
415 Orchard Drive
Santa Fe, New Mexico 87501
(505) 982-3278

Founded in 1980, this organization is dedicated to acquiring and preserving the remaining pre-historic and historic archeological sites in the nation. Once a site is purchased, the Conservancy creates a one-hundred-year management plan for the site in cooperation with a local committee. One recent acquisition is the first Father Kino mission at Guevavi, Arizona.

Association for Gravestone Studies
30 Elm Street
Worcester, MA 01609
(508) 831-7753

This membership organization promotes the restoration and preservation of gravestones and cemeteries. It publishes a quarterly newsletter and a journal, *Markers*. It has a lending library and holds an annual conference. State chapters, called *Old Cemetery Associations*, are found in Wisconsin, New Hampshire, Vermont, and Maine.

The Association for Living History Farms and Agricultural Museums (ALHFAM)
Natural Museum of American History, Room 5035
Smithsonian Institution
Washington, DC 20560
(202) 357-1300

This organization serves groups involved in the operation and management of living historical farms and outdoor museums. It encourages research, exchange of ideas, and publications on historical agriculture, rural society, folklife, and historical interpretation. It produces *Bulletin*, a bimonthly newsletter.

Association for the Preservation of Civil War Sites
Box 1862
Fredericksburg, VA 22401
(703) 371-3489

This private organization acts as a land trust, and holds easements on significant Civil War battlefields. It offers technical assistance to local historians. The Association publishes a newsletter and offers seminars on historical battlefields.

Association for Preservation Technology International (APT)
Box 8178
Fredericksburg, VA 22404
(703) 373-1621

This international membership organization is involved in the maintenance, conservation and protection of historic building sites and artifact resources. APT holds annual conferences, workshops, and tours. It publishes a monthly newsletter and quarterly journal, *APT Bulletin*, which often features case studies or articles on historic landscape preservation (see journals).

The Catalog of Landscape Records in the United States
Wave Hill
657 West 252nd Street
Bronx, NY 10371
(212) 549-3200

Established at Wave Hill in 1986, the Catalog is the only program of its kind in the nation. In addition to its growing database of information on the location of historical landscape documentation, it publishes a Newsletter and serves as a national clearinghouse on the care, management and placement of landscape records.

The Conservation Fund
1800 North Kent Street
Arlington, VA 22209
(703) 525-6300

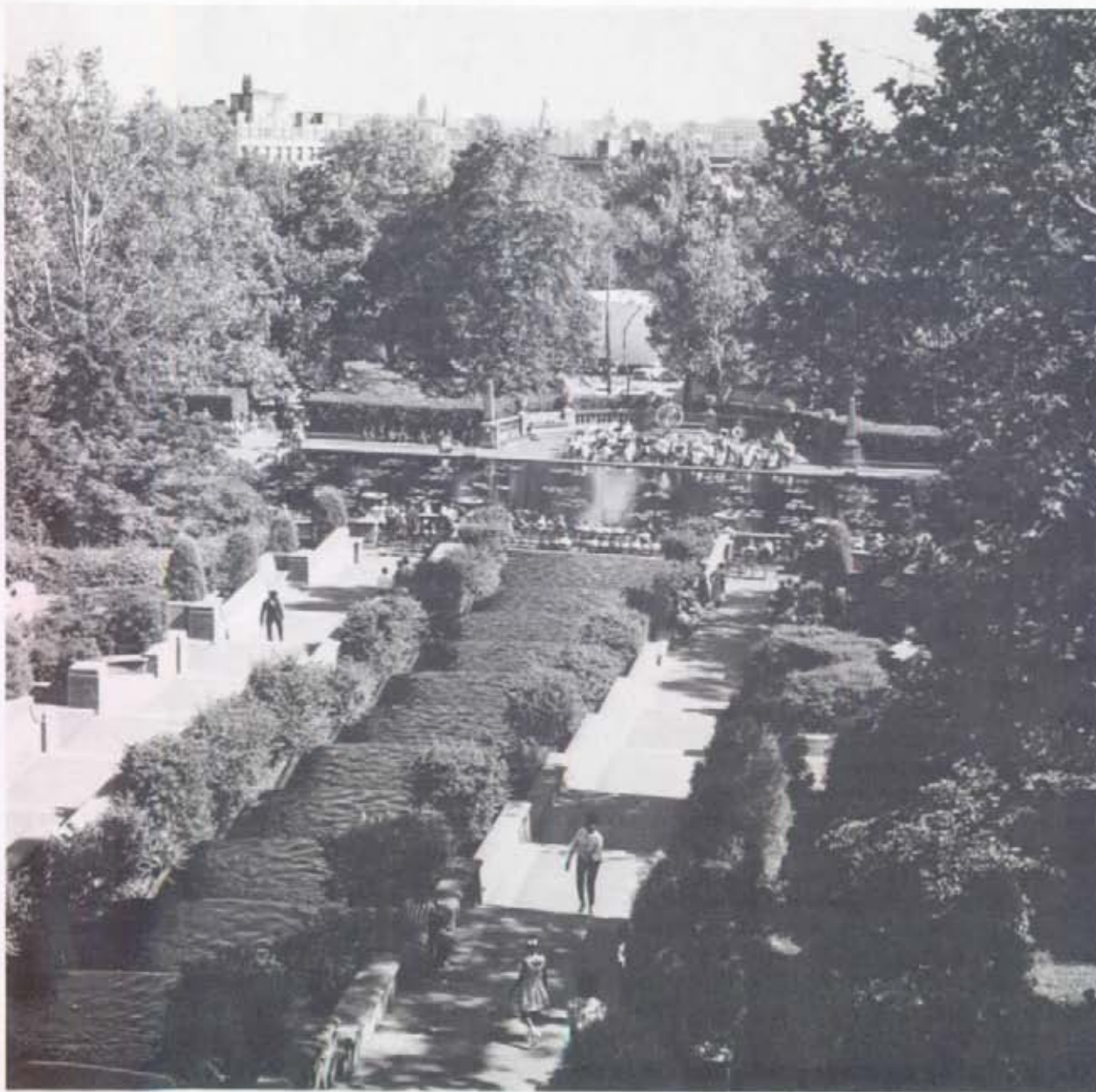
This private organization is applying the tools of the marketplace to land and water conservation. The Conservation Fund buys and accepts property and easements, and then arranges for management by other non-profit organizations or Federal and State governments. It offers technical assistance to help groups design with conservation and preservation features. As a result of a two-year study of threatened Civil War battlefield sites, the Conservation Fund has published a guide to the remaining battlefield sites. The Conservation Fund also publishes a newsletter.

Frederick Law Olmsted Association
475 Riverside Drive
New York, NY 10015
(212) 870-3033

The Association has been involved in a number of preservation activities related to the work of Frederick Law Olmsted, Sr. They have prepared exhibits, publications and contributed to the formation of the National Association of Olmsted Parks.

The Garden Conservancy
P.O. Box 219
Cold Spring, NY 10516
(914) 265-2029

Founded in 1989, The Garden Conservancy works to preserve exceptional American gardens by facilitating their transfer from private to public ownership. It has programs for members, including symposia, garden tours, and a newsletter.



Long-step cascade and pool of Meridian Hill Park, 1963.
Photo courtesy the National Register of Historic Places,
NPS.

The Garden Club of America
598 Madison Avenue
New York, NY 10022
(212) 753-8287

The Garden Club of America is a non-profit membership organization founded in 1913 to stimulate the knowledge and love of gardening and to restore, improve, and protect the quality of the environment. It is composed of local garden clubs. The GCA has been instrumental in assembling the collection of over 65,000 glass slides of American parks and gardens currently on loan to the Smithsonian Institution, Office of Horticulture.

**International Council On Monuments and Sites,
US Committee (US ICOMOS)**

Decatur House
1600 H Street, NW
Washington, DC 20006
(202) 842-1866

US/ICOMOS is one of 60 national committees of ICOMOS, the International Council on Monuments and Sites. ICOMOS fosters preservation of cultural resources world-wide through an international network and as an advisor to the United Nations Education, Scientific, and Cultural Organization (UNESCO) on World Heritage Sites. The US/ICOMOS Historic Landscapes Committee is one of several specialized committees within US/ICOMOS. Established in 1989, the committee promotes recognition and protection of historic landscapes, participates in international training opportunities, and exchanges information with other countries.

Land Trust Alliance
900 17th Street, Suite 410, NW
Washington, DC 20006-2501
(202) 785-1410

Founded in 1982, the Alliance serves as an umbrella group for the land trust movement. It provides a broad range of services, from insurance to training aimed at helping to strengthen individual land trusts. The Alliance acts as the voice for local and regional land conservation groups in Washington, D.C. It focuses on public policy issues of direct interest to land trusts, playing both an educational and an advocacy role, and also publishes *Exchange*, a quarterly journal.

National Alliance of Preservation Commissions
444 North Capitol Street, Suite 332, NW
Washington, DC 20001
(301) 663-6149
or c/o School of Environmental Design
609 Caldwell Hall
University of Georgia
Athens, GA 30620
(404) 542-4731

This membership organization provides information and education to members of preservation commissions and boards of architectural review. It produces *Alliance Review*, a bimonthly newsletter.

National Association for Olmsted Parks (NAOP)
5010 Wisconsin Avenue, Suite 308
Washington, DC 20016
(202) 362-9511

The National Association for Olmsted Parks, founded in 1980, serves as the national voice for the preservation of the parks designed by the Olmsted firm. The NAOP is dedicated to

the promotion of the design principles of Frederick Law Olmsted, Sr.; the preservation and enhancement of our national heritage of historic parks and landscapes; and the continuation of the Olmsted tradition in modern landscape planning and design. There are a number of state and local Olmsted organizations throughout the country. Many are listed in this publication in their respective state.

National Audubon Society
950 Third Avenue
New York, NY 10022
(212) 546-9100

The National Audubon Society is an advocate for wise public policy for the natural environment, especially in major issues that relate to wildlife habitats. In addition to its research, education and political action programs, the Audubon Society maintains or manages over eighty wildlife sanctuaries. In some areas, the society provides educational programs that address the historic relationship between humans and the land. Some properties that have been protected for wildlife also have historic or cultural resources such as a 10,000 acre ranch in the Flint Hills of Kansas.

National Conference of State Historic Preservation Officers (NCSHPO)
Hall of States, Suite 332
444 North Capitol Street NW
Washington, DC 20001
(202) 624-5465

The National Conference of State Historic Preservation Officers (NCSHPO) is a professional organization that represents State Historic Preservation Officers from the 50 states, five territories, and the District of

Columbia. The organization assists the State Historic Preservation Officers by sharing information, knowledge, and new programs. It also serves as a liaison between the Federal and State agencies, and funds research and development of preservation programs.

National Council of Garden Clubs, Inc.
4401 Magnolia Avenue
St. Louis, MO 63110
(314) 776-7574

The council is composed of 51 state organizations formed for charitable, educational, and scientific purposes to study and advance the fine arts of gardening, landscape design, and horticulture.

National Institute for Conservation of Cultural Property (NIC)
3299 K Street, NW
Suite 403
Washington, DC 20007
(202) 625-1495

The Institute works to meet the needs of conservation professionals by sponsoring programs, projects and professional training. A joint project between the NIC and the Smithsonian Institution's National Museum of Art, called Save Outdoor Sculpture (SOS!), is currently underway to raise awareness about the need to preserve and document public sculpture in the United States. The information gathered will be recorded into a data base and will be available for public use.

National Parks and Conservation Association
Conservation Program Division
1015 31st Street, NW
Washington, DC 20007
(202) 944-8572

This non-profit private group with 280,000 members and several regional offices exists primarily to maintain the integrity of the National Park System. In addition to lobbying, it acquires land, and provides educational material. The Conservation Association publishes the *National Park Magazine*, which includes articles on landscape preservation. It is currently involved in a study of the scenic landscapes of the Hudson River School painters. It is also inventorying sites associated with the artist Georgia O'Keefe.

National Society of Colonial Dames of America
2715 Q Street, NW
Washington, DC 20007
(703) 556-0881

This patriotic organization is represented in 44 states. It operates and manages over 85 house museums and their grounds. Many of the Society's grounds have been preserved and restored to their historic condition by the members.

National Trust for Historic Preservation
1785 Massachusetts Avenue, NW
Washington, DC 20036
(202) 673-4000

Established in 1949, the National Trust is a membership organization which encourages preservation of America's historical and cultural heritage. The Trust manages 16 historic properties, all of which have an associated landscape. They range from urban courtyards

and gardens to country estates with several thousand acres of natural and cultural landscape. The Trust's seven regional offices provide services to local organizations, and their Main Street Center assists downtown revitalization programs. The Rural Heritage Initiative offers technical services and information. The Trust has published *Saving America's Countryside* and *Designers and Places*, a guide to American landscape architecture. The Trust also publishes *Historic Preservation*, a bimonthly magazine, *Preservation News*, a monthly newspaper, and *Preservation Forum*, a quarterly journal for professionals and nonprofit organizations. The regional offices are listed in the following section. These regional offices are the best initial contact for general preservation inquiries.

The Nature Conservancy
1800 North Kent Street
Arlington, Virginia 22209
(703) 841-8744

The Primary mission of the Conservancy is the conservation of threatened or endangered species, habitats, and natural communities in the U.S. The Conservancy has also undertaken work in the preservation of historic and cultural resources in addition to its ecological mission. The Conservancy's new initiative, the Last Great Places Program, combines ecosystem protection of an area with its economic and cultural needs.

Organization of American History
112 North Bryan Street
Bloomington, Indiana 47408
(812) 855-7311

The Organization of American History has a pilot program in cooperation with the National Park Service to identify and evaluate potential National Historic Landmark sites associated with women's history, including landscapes such as Dumbarton Oaks.

Partners for Livable Places
1429 21st Street, NW
Washington, DC 20016
(202) 887-5590

This is a membership organization that works with communities to change the quality of the environment and open space. It provides technical assistance, workshops, seminars, and conferences. It publishes *PLACE*, a magazine dealing with many landscape issues as well as a variety of other publications.

Pioneer America Society
Geography Division - ERS Dept.
University of North Carolina
Wilmington, NC 28403-3297
(919) 395-3490

The Pioneer America Society encourages the identification, documentation, and preservation of the past through written and pictorial records of remaining folk houses and cabins, barns, bridges, inns, grist mills, sawmills, stores, churches, and cemeteries in their geographical setting. The Society publishes a journal, *Material Culture* (formerly *Pioneer America*) as well as *P.A.S.T.*, a collection of papers from the Society's annual meeting.

Preservation Action

1350 Connecticut Avenue, NW
Suite 400-A
Washington, DC 20036
(202) 659-0915

This is a national grassroots lobbying organization working exclusively on historic preservation issues.

Rails to Trails Conservancy

1400 16th Street, NW
Suite 300
Washington, DC 20036
(202) 797-5400

This national membership organization promotes the conversion of abandoned railroad corridors into public trails for recreation, natural appreciation, and also to preserve the remains of America's railroading legacy such as old depots, train stations, tunnels, trestles, and other structures.

Society for American Archeology

808 17th Street, NW
Suite 200
Washington, DC 20006
(202) 223-9774

This organization promotes interest and research in the archeology of the American continents, discourages commercialism in the archeological field, and serves as a bond among those interested in the field. It publishes *American Antiquity*, a quarterly journal, and the *Bulletin* bimonthly.

Society of Architectural Historians (SAH)

Preservation Committee
1232 Pine Street
Philadelphia, PA 19107
(215) 735-0224

This membership organization is a forum for architecture and its related arts. It encourages scholarly research and promotes preservation of significant architectural monuments as part of our history and heritage. It publishes both a newsletter and a scholarly journal, *The Journal of the Society for Architectural Historians*.

The Townscape Institute

2 Hubbard Park
Cambridge, MA 02138
(617) 491-8952

This is a nonprofit, public interest organization concerned with increasing the livability of cities, towns, and neighborhoods through conservation and the visual enhancement of the built environment. It recently produced a video and exhibit on threatened cultural landscapes.

The Trust for Public Land

116 New Montgomery Street, 4th Floor
San Francisco, CA 94105
(415) 495-4014

The Trust for Public Land facilitates the preservation of open space, which includes historic landscapes. It assists local land trusts as well as Federal, State, and local agencies through its headquarters and six regional and field offices. It publishes an occasional newsletter, *TPL Update*.

The Urban Land Institute

1090 Vermont Avenue, NW
Washington, DC 20005
(202) 624-7000

The Institute promotes improved land-development policy, conducts research and educational programs, and publishes studies of use to planners, developers, and others involved in development. It publishes *Land Use Digest*, and *Urban Land Magazine*, monthly.

Vernacular Architecture Forum

c/o Peter Kurtze
109 Brandon Avenue
Baltimore, MD 21212
(301) 974-2438

The Forum encourages the study and preservation of all aspects of vernacular architecture and landscape architecture through inter-disciplinary methods. It publishes a newsletter and sponsors conferences and tours.

The Victorian Society of America

219 South Sixth Street
Philadelphia, PA 19106
(215) 627-4252

The Victorian Society is an educational organization for the preservation and study of nineteenth century America, specifically, architecture, decorative arts, landscape and gardens. It runs a summer school in which landscapes are stressed as an integral part of any historic property. It publishes a magazine, which frequently includes articles on landscape preservation. It is currently developing a travellers guide to nineteenth-century National Register sites.

Regional Organizations

1. National Park Service

The regional offices of the NPS are directly involved in a wide variety of programs and projects related to the cultural resources within the National Park System as well as providing technical assistance to other agencies, organizations, and individuals who own or manage historic properties. In general, the most appropriate contact for information on historic landscapes is the cultural resource program, though each region is organized differently. The external programs provide technical assistance and regional coordination for a number of preservation programs including the rehabilitation tax credits, endangered National Historic Landmarks, HABS/HAER documentation, preservation grants, and Section 106 review.

Alaska Region
2525 Gambell Street
Anchorage, AK 99503-2892

Park Programs: Cultural Resources
(907) 257-2668
States: AL
External Programs: Cultural Resources
(907) 257-2641
States: AL
Other Information: (907) 257-2696

Denver Service Center
12795 West Alameda Parkway
P.O. Box 25257
Denver, Colorado 80225-0287

The DSC assists the regions with design, planning, and construction services for all units of the National Park System.

Eastern Team (303) 327-2400
Central Team (303) 327-2300
Western Team (303) 327-2200

Harpers Ferry Center
Harpers Ferry, WV 24425

Harpers Ferry provides exhibit planning and design, audio visual, and interpretive program assistance to all National Parks and supports the Williamsport Preservation Training Center.

Williamsport Preservation Training Center
(301) 223-7872

Mid-Atlantic Region
U.S. Customs House
2nd and Chestnut
Philadelphia, PA 19106

Park Programs: Park Historic Preservation
(215) 597-7097
States: WV, VA, DE, PA, MD
External Programs: National Register
Programs (215) 597-5129
States: CT, DE, DC, IN, ME, MD, MA,
MI, NH, NJ, NY, OH, PA, RI, VT, VA,
WV
Other Information: (215) 597-7018

Midwest Region
1709 Jackson Street
Omaha, NE 68102

Park Programs: Cultural Resources
(402) 221-3426
States: NE, IA, MI, MN, WI, OH, IN,
IL, KS, MO
External Programs: Coordinated by the Rocky
Mountain Region and the Mid-Atlantic Region.
Other Information: (402) 221-3471

National Capital Region
1100 Ohio Drive, SW
Washington, D.C. 20242

Park Programs: Cultural Resources
(202) 619-7273
Design Services (202) 523-5555
Land Use Office (202) 619-7025
States: DC including counties of VA, MD,
WV bordering the Potomac River
External Programs: Coordinated by the Mid-
Atlantic Region
Other Information: (202) 619-7222

North Atlantic Region
15 State Street
Boston, MA 02109

Park Programs: Cultural Resources
(617) 223-5053
States: ME, VT, NH, MA, RI, CT, NY,
NJ
External Programs: Coordinated by the Mid-
Atlantic Region
Other information: (617) 223-5200

Pacific Northwest Regional Office
83 King Street
Suite 212
Seattle, WA 98104

Park Programs: Cultural Resources
(206) 553-0791
States: WA, OR, ID
External Programs: Coordinated by the
Western Region
Other information: (206) 553-5565
NPS/USFS visitor information: (206) 553-0170

Rocky Mountain Regional Office
12795 West Alameda Parkway
P.O. Box 25287
Denver, CO. 80225-0287

Park Programs: Cultural Resources
(303) 969-2875

States: CO, UT, WY, ND, SD

External Programs: Cultural Resources
(303) 969-2875

States: CO, IL, IA, KS, MN, MO, MT,

NE, NM, ND, OK, SD, TX, UT, WI, WY

Other Information: (303) 969-2009

Southeast Regional Office (SERO)

75 Spring Street, NW
Atlanta, GA 30303

Park Programs: Cultural Resources
(404) 331-2636

States: AL, AR, FL, GA, KT, NC, SC,
TN, Puerto Rico, Virgin Islands

External Programs: National Register Division
(404) 331-2632

States: AL, AR, FL, GA, KT, LA, MI,
NC, SC, TN, Virgin Islands, Puerto Rico

Other Information: (404) 331-4998

Southwest Regional Office

P.O. Box 728
Santa Fe, NM 87504-0728

Park Programs: Cultural Resources
(505) 988-6870

States: NM, TX, OK, AR, LA,
northeastern AR

**External Programs: Coordinated by the Rocky
Mountain Regional Office**

Other information: (505) 744-6340

Western Region
600 Harrison Street
San Francisco, CA. 94107-1372

Park Programs: Park Historic Preservation
(415) 744-3961

States: AR, CA, HI, Pacific islands

**External Programs: National Register
Programs (415) 744-3985**

States: AR, CA, HI, ID, NV, OR, WA

Other Information: (415) 744-3988

**2. National Trust for Historic
Preservation Regional Offices**

Northeast Regional Office

45 School Street
Old City Hall, 4th Floor
Boston, MA 02108
(617) 523-0885

Mid-Atlantic Regional Office

6401 Germantown Avenue
Philadelphia, PA 19144
(215) 438-2886

Southern Regional Office

456 King Street
Charleston, SC 29403
(803) 722-8552

Midwest Regional Office

53 West Jackson Boulevard
Suite 1135
Chicago, IL 60604
(312) 939-5547

Mountains/Plains Regional Office

511 16th Street
Suite 700
Denver, CO 80202
(303) 623-1504

Texas/ New Mexico Field Office

500 Main Street
Suite 606
Fort Worth, TX 76102
(817) 332- 4398

Western Regional Office

One Sutter Street
Suite 707
San Francisco, CA 94104
(415) 956-0610

3. Other Regional Organizations

Cherokee Garden Center
Atlanta History Center
McElreth Hall
3101 Andrews Drive, NW
Atlanta, GA 30305
(404) 261-1837

The Cherokee Garden Center disseminates educational and research information for the gardening and horticultural community in the southeastern United States. Its library maintains a collection of current and rare books, pamphlets and magazines covering subjects relating to horticulture, landscape design and garden history.

Columbia Gorge Commission
P.O. Box 730
White Salmon, WA 98672
(509) 493-3323

The Columbia Gorge Commission is a bi-state partnership between Washington, Oregon and the U.S. Forest Service to facilitate landuse planning for the Columbia Gorge.

Countryside Institute
Box 1102
Barnard, VT 05031
(802) 234-6444

This new organization, founded in 1989, is dedicated to identifying and preserving rural areas. Although the Institute is presently concentrating its efforts in the Northeast and Vermont, the organization plans to work with many regions. One of its is to foster coalitions between groups such as planning commissions, developers, and local commerce organizations. Technical assistance is provided through a

request for proposal process. Current programs include the Countryside Stewardship United Kingdom Exchange.

Greensward Foundation
104 Prospect Park West
Brooklyn, NY 11215
(212) 473-6283

This is a coalition of friends groups associated with historic urban parks in New York, New Jersey and Maryland. Greensward has published a number of books on topics related to Central and Prospect Parks.

Historic Chattahoochee Commission
P.O. Box 33
Eufaula, Alabama 36027
(205) 687-9755

This eighteen-county agency was established through an interstate compact between Georgia and Alabama in 1978 to protect the lower Chattahoochee River Valley. It has the dual mission of controlling development in historically significant areas as well as facilitating heritage tourism under the National Trust program.

Red Hills Conservation Association
Route 1, Box 678
Tallahassee, FL 32312
(904) 222-9280

This group is working in cooperation with the National Trust, The Trust for Public Land, and the Florida and Georgia Nature Conservancies to document and preserve 300,000 acres of scenic landscape between historic cotton and pine plantations along the Gulf Coast.

Society for the Preservation of New England Antiquities
141 Cambridge Street
Boston, MA 02108
(617) 227-3956

SPNEA manages a few historic properties in Massachusetts with notable landscapes, such as the Codman House. While their focus has traditionally been on structures, considerations of setting and landscape are becoming more important, in the effort to have the landscape synchronize with the interpretive thrust of the building.

Southern Garden History Society
Old Salem, Inc.
Drawer F, Salem Station
Winston-Salem, North Carolina 27101
(919) 721-7300

The Society promotes interest in southern gardens and landscape history, historic horticulture, and the preservation and restoration of historic gardens and landscapes in the South.

New England Garden History Society
c/o Librarian
Massachusetts Horticultural Society
300 Massachusetts Avenue
Boston, MA 02115
(617) 536-9280

The Society promotes the study of the history of New England gardening, horticulture, and landscape design, encourages the preservation of gardens and landscapes. It publishes a newsletter, *Labyrinth*.

CHAPTER 2

State and Local Organizations



Long Meadow, Prospect Park
Photo by Paul Beizzi courtesy the NYC Department of Parks

This chapter address agencies, organizations and programs that relate to historic landscape preservation within each state. The information gathered here began with an initial call to the State Historic Preservation Office (SHPO). These offices administer a number of Federal preservation programs including nominations to the National Register of Historic Places and grants to Certified Local Governments (CLGs). They also participate in the preservation tax credits program, which provides investment tax credits for the rehabilitation of historic buildings, and review Federally-funded projects that may affect historic properties (Section 106). Many also manage special state preservation programs.

Since all SHPOs perform the aforementioned functions, only those additional programs that relate to historic landscape preservation are described. Discussions with the SHPOs often led to other State or local agencies as well as private preservation organizations. These are described following the SHPO listing. Again, we have only listed those organizations that have some function or program related to historic landscape preservation. This section is organized alphabetically by state as follows: 1.) SHPO; 2.) other state agencies; 3.) local governments; and 4.) private organizations (the statewide preservation organization is listed first, if appropriate). In some cases organizations appear whose primary focus at the present time is either natural resource or architectural preservation. If the organization's mandate includes historic landscape preservation and/or the staff express interest in the topic, we

have included them in the Directory.

Readers may notice great differences in the number of programs described for each state. This difference may be due to a number of factors. First, a specific preservation system may have evolved as a result of the geography, character, and political structure of the state. An example is the great number of local land trusts in Pennsylvania. Many western states focus their preservation and conservation efforts on environmental or ecological issues. A few states have a number of statewide and local agencies and private organizations with historic landscape preservation programs or functions. Many of these states are in the Northeast, where a long tradition of designed parks and landscapes exist. Other differences exist due to the amount of public funding or the general economic condition of the individual states. Many innovative programs, such as those in Massachusetts, have been temporarily delayed due to the lack of available funds. The variety of programs in each state reflects the unique characteristics of various regions of the country. Regardless of these differences, many programs described here may be applicable to other areas of the country.

By and large, specific historic properties or associations which support individual properties are not described here, unless they provide some sort of technical assistance that extends far beyond their own historic property or if they have instituted a particularly innovative program. An example is the Central Park Conservancy whose pioneering programs in collaboration with the City of New York have served as a model for many urban parks. A few organizations relating to planned communities, composed of many historic properties have also been listed.

1. ALABAMA

SHPO

Alabama Historical Commission
725 Monroe Street
Montgomery, AL 36130
(205) 242-3184

In conjunction with the State Department of Conservation and The Nature Conservancy, the Alabama Historical Commission has been buying undeveloped parcels of land containing both historic and scenic resources along Mobile Bay. The Commission's publication, *Alabama Preservation Manual*, includes historic landscape design and planting guidelines, historic plant lists, and resource lists for three periods of the Alabama landscape.

Private organizations

Birmingham Historical Society
1 Sloss Quarters
Birmingham, AL 35222
(205) 251-1880

In 1986, this private membership organization published a book on the landscape history of the city of Birmingham. It has also worked in partnership with the National Park Service to identify a Birmingham Industrial Heritage Corridor. The research for this project covers five counties and will include an inventory of the historic cultural resources, including many two-of-the-century estates. The Society has a small budget and works primarily with the help of professional volunteers such as architects and landscape architects. In addition, the Birmingham Historical Society sponsors tours and workshops for teachers, students and the general public.

Design Alabama, Inc.
Alabama State Council on the Arts
Montgomery, AL 36130
(205) 242-4076

This group was founded on the initiative of the State Arts Council to increase design awareness and availability of design services throughout the State. It forms a bridge between the professional design community and the public. The group works with local communities to identify historic resources and to develop plans to protect these resources. It also publishes a journal, *Design Alabama*.

Tuscaloosa County Preservation Society
P.O. Box 1665
Tuscaloosa, AL 35403
(205) 758-2238

This Society is restoring the landscape at the site of the original Alabama State Capital (1826-46) which burned in 1925. It also has an active tree designation and registration program.

2. ALASKA

SHPO

Department of Natural Resources
Division of Parks
Office of History and Archeology
P.O. Box 107001
Anchorage, AK 99510-7001
(907) 762-2622

This office provides technical assistance to State Park regional managers who oversee parks with historic or prehistoric resources.

Private organizations

Friends of Kennecott
3018 Alder Circle
Anchorage, AK 99508
(907) 258-7349

This group exists to preserve the setting and structures of this National Historic Landmark copper mine that operated from 1908 to 1938.

3. ARIZONA

SHPO

Arizona State Parks
Office of Historic Preservation
800 West Washington, Suite 415
Phoenix, AZ 85007
(602) 542-4174

This SHPO works in conjunction with a number of agencies, both Federal and State. The office is working with the Bureau of Land Management on a pilot project to survey and inventory two historic (1880) ranches in the Phoenix area and develop both as interpretative sites. In partnership with the Forest Service, the office is working to protect an abandoned mining camp and landscape features within the Coronado National Forest.

Other state agencies

Arizona Department of Transportation
P.O. Box 3309
Kingman, AZ 86402
(602) 255-7386

The Department has succeeded in having a portion of historic Route 66 within Arizona designated under the Scenic Byways Program.

Private organizations

Arizona Preservation Foundation
P.O. Box 13492
Prescott, AZ 85002
(602) 253-5381

This statewide preservation organization is an education and advocacy group. It has prepared

a list of endangered properties, including archeological sites in Arizona. In 1990, it held a conference that focused on historic roads and trails.

Yuma Crossing Foundation
P.O. Box 5735
Yuma, AZ 85366-5735
(602) 329-0471

This private, nonprofit group has been working to preserve the junction of several historic trails as they cross the Mormon Battalion River at Yuma.

Museum of Northern Arizona
Route 4, Box 720
Flagstaff, AZ 86001
(602) 774-5211

The Museum has published the results of a study on Palatkwap, sponsored by Northern Arizona University and the Arizona Humanities Council. Palatkwap is a prehistoric Hopi Indian trail and major trading route between Arizona, New Mexico, Colorado and the Pacific Ocean.

4. ARKANSAS

SHPO

Arkansas Historic Preservation Program
The Heritage Center
225 East Markham Street, Suite 200
Little Rock, AR 72201
(501) 324-9346

This office has successfully spearheaded efforts in association with the Landscape Architecture Department at the University of Arkansas to survey Civilian Conservation Corps parks and their landscape features, and add the parks to the National Register. The office has also funded research for a book on the historic landscapes of Arkansas.

5. CALIFORNIA

There is a considerable amount of activity at the local and state levels in California, much of which is associated with the preservation of open space, coastal areas, rivers, and natural environments. In 1990, California passed a State Heritage Corridor Bill, setting up a pilot network in Northern California to develop scenic corridors.

SHPO

Department of Parks and Recreation
P.O. Box 942896
Sacramento, CA 94296-0001

Office of Historic Preservation
(916) 653-6624

One of the major efforts of California's Office of Historic Preservation is its emphasis on the survey and registration programs with special attention paid to ethnic sites, rural landscapes and cultural resources. The office provides technical assistance to local governments and nonprofit organizations related to rehabilitation of historic buildings and the preservation of archeological sites.

Resource Protection Division
(916) 653-6725

Division staff are developing management plans for the State parks, which are directly managed onsite by individual administrative units. Issues relating to the preservation of historical settings and viewsheds in many of the parks are being addressed.

Local governments

East Bay Regional District
11500 Skyline Boulevard
Oakland, CA 94616
(510) 531-9300

The Regional District, which was established in the 1930's, includes parts of both Alameda and Contra Costa counties. It currently manages about 65,000 acres with approximately 1,100 miles of trails, a lake, an old mine, and a botanic garden as well as many different parks. While preserving open space is the primary focus, the District stresses the development of recreational opportunities. It also has an internship program.

Oakland Office of Parks and Recreation
1520 Lakeside Drive
Oakland, CA 94612
(510) 273-3092

The City of Oakland has three significant tree-related ordinances. One regulates the removal of trees from all property. The most protected are native California oaks. The ordinance also provides for a tree replacement program emphasizing native species. Oakland has a view preservation ordinance, as well as a hazardous tree abatement ordinance. In 1981 it published a street tree plan -- "Greenstreets" -- which encourages diversity, and using trees to help define the characteristics of neighborhoods. The Oakland Parks system is also beginning a tree nursery, concentrating on native species at the present time.

Riverside Park and Recreation Department
3900 Main Street
Riverside, CA 92522
(714) 782-5305

The City of Riverside is working closely with the State of California in the development of a new park, the California Citrus State Historic Park, which will in effect be an outdoor museum of the role of citrus crops in the development of California. The park is situated in existing citrus groves. The City of Riverside has bought additional contiguous acreage to protect the integrity of the park. This land, which also includes existing citrus groves, will be leased to private operators. Income will be used to acquire additional land.

City of Visalia
Public Services Department
P.O. Box 671
Visalia, CA 93279
(209) 733-6000

Visalia is illustrative of a number of California communities with stringent tree ordinances. The focus of the 1971 ordinance is to protect the Visalia oak. In addition to requiring a permit to cut down even a single Visalia oak, the program also includes extensive replanting, an oak regeneration program, efforts to develop greenways along waterways, and requirements for tree replacement.

Private organizations

Across California Conservancy
11822 Lost Ranch Way
Nevada City, CA 95959
(916) 272-3823

The Conservancy focuses on the preservation of

heritage in many facets, including historical landscapes. As its name indicates, Across California Conservancy is concentrating on developing inland heritage corridors and trails in a number of Northern California communities.

California Preservation Foundation
1615 Broadway, Suite 705
Oakland, CA 94612
(510) 763-0972

This statewide, nonprofit, membership group serves as the umbrella organization for many preservation efforts and provides technical assistance. To date, most of the Foundation's interest has been on the built environment. It holds an annual statewide preservation conference, which includes a section on landscapes, as well as workshops.

California Oak Foundation
909 12th Street, Suite 125
Sacramento, CA 95814
(916) 448-9495

This membership group focuses on preserving and conserving California's native oaks, three species of which are threatened.

Los Angeles Conservancy
Roosevelt Building
727 West Seventh Street, Suite 955
Los Angeles, CA
(213) 623-2489

The Conservancy is in the process of compiling a Restoration Resources Directory which will list consultants specializing in restoration and preservation goods and services.

San Diego Historical Society
P.O. Box 81825
San Diego, CA 92138
(619) 232-6203

The San Diego Historical Society has a horticultural committee that publishes *Trellis*, a newsletter that is a source of information on California garden history.

6. COLORADO

Most of the interest in landscape preservation in Colorado relates to the conservation of significant natural landscapes.

SHPO

Colorado Historical Society
Colorado History Museum
1300 Broadway
Denver, CO 80203
(303) 866-4678

This SHPO deals with landscapes primarily as settings for historic buildings. It has prepared a prototypical nomination of the Denver parks and parkways to the National Register of Historic Places.

Other state agencies

Colorado State Parks
1313 Sherman, Suite 618
Denver, CO 80203
(303) 866-3437

The mandate of this office is primarily to preserve the environment of the state parks and provide opportunities for outdoor recreation. Colorado does maintain a few cultural landscapes within its state parks, such as Native American ruins and the remains of the Castlewood Canyon Dam.

Colorado Scenic and Historic Byways Commission
Department of Transportation
4201 East Arkansas, Room 284
Denver, CO 80222
(303) 757-9786

The Scenic Byways Commission, established in 1989 for a three-year period, is intended to foster economic development and tourism. Eight byways have been designated so far, with as many as ten more yet to be chosen. They are selected on the basis of both scenic and historical significance, public access, and suitability for vehicles.

Local governments

Denver Parks and Recreation
2300 15th Street, Suite 150
Denver, CO 80202
(303) 964-2511

The Denver parks and parkway system are listed on the National Register. In 1989, the City passed a bond issue to provide money for the restoration of historic structures within parks. Denver Parks is trying to reintroduce the same street tree species originally planted in the city, following the original planting plans wherever feasible. "Park People" is a non-profit citizens group that works with Denver Parks to raise money, primarily for buildings. Denver Parks also works with the Metro Mountain Coordinating Council, a coalition of twenty-three agencies and groups that own land in the Front Range of the Rocky Mountains. The Council is trying to preserve old structures and trails while simultaneously streamlining maintenance costs.

Private organizations

Colorado Open Lands
1050 Walnut Street, Suite 525
Boulder, CO 80302
(303) 443-7347

This nonprofit foundation is actively involved in open space preservation throughout the state, especially in the Front Range. Many of its projects are designed to generate revenues. Colorado Open Lands is also involved in community garden projects and a greenway. It uses a revolving fund as an interface between private landowners and the public sector.

7. CONNECTICUT

Many preservation activities in Connecticut have been curtailed because of severe budgetary constraints. Nonetheless, the State has produced a number of interesting programs, such as an effort to identify and protect town greens. There are new programs to protect both scenic and rural roads. Much open space preservation in Connecticut is being accomplished by land trusts, which often have a historic preservation function.

SHPO

Connecticut Historical Commission
59 South Prospect Street
Hartford, CT 06106
(213) 566-3005

The Connecticut SHPO manages four museum properties with historic landscapes.

Other state agencies

Bureau of Parks and Forests
Department of Environmental Protection
165 Capitol Avenue
Hartford, CT 06106
(203) 566-2304

This Bureau is responsible for the new State Heritage Park Program. It has been working on a proposal for a national heritage corridor in Eastern Connecticut, which would include the preservation of agricultural land, a scenic highway, and various villages. It also manages a number of historically significant landscapes, including Weir Farm, now a National Park Service property, and Harkness State Park, with gardens designed by Beatrix Farrand and Marian Coffin. The Bureau uses interns,

primarily for research projects.

Department of Transportation
24 Wolcott Hill Road
P.O. Box Drawer A
Wethersfield, CT 06109
(203) 566-3854

In 1989, Connecticut began a program to designate scenic roads. A Scenic Road Advisory Committee, composed of representatives from the Departments of Transportation, Economic Development, and Environmental Protection, reviews applications from towns. Roads designated as scenic must be at least one mile long and have distinctive features such as scenic views or geological formations. Trees and stone walls along the road receive special maintenance considerations. The designation protects only the road and its right of way, not the abutting property or viewsheds.

Private organizations

Connecticut Trust for Historic Preservation
940 Whitney Avenue
Hamden, CT 06517-4002
(203) 562-6312

This statewide, nonprofit, membership group exists to preserve the rich architectural heritage of Connecticut, including the settings of historic buildings. It receives grants from the Connecticut Historical Commission in addition to private funds. It offers a wide range of programs, including technical assistance, a revolving loan fund, information on advocacy, a bimonthly newsletter, and many workshops. The group also holds a number of easements, including a farm where it runs a model rural preservation program. The Trust is currently

sponsoring an extensive program to study town greens. It has also spearheaded the recent work to nominate the Merritt Parkway to the National Register. The group has an intern program.

Guilford Preservation Alliance
P.O. Box 199
Guilford, CT 06437

This group is dedicated to raising awareness of the importance and value of the town of Guilford and the quality of life there. To this end, it has been active in developing coalitions with various constituencies. After completing an inventory of 450 architecturally significant structures in the town, the Alliance developed a master plan for the growth of Guilford that emphasizes the importance of the location and setting of houses. Its Government Liaison Committee tracks all proposals relating to vistas, because viewsheds are so important to the town. The Alliance has helped sponsor tree planting on private properties and is developing a master plan for tree planting.

Residents for Rural Roads
Sperry Road
Bethany, CT 06525
(203) 393-2214

This all-volunteer clearinghouse organization, started in 1976, helped develop Connecticut's Scenic Road Statute, which allows towns to adopt ordinances relating to local scenic roads. The roads may be designated either directly or through the local planning/zoning commission process.

Greater Hartford Architecture Conservancy
278 Farmington Avenue
Hartford, CT 06105
(203) 525-0279

The focus of this preservation group has been on the built environment, both the structures and their settings. Current activities include efforts to preserve a contemporary Dan Kiley landscape design.

New Haven Foundation
70 Audubon Street
New Haven, CT 06510
(203) 777-2386

This local foundation helped to establish the Foundation for the New Haven Green, Inc., which existed from 1986 to 1991 to sponsor the restoration of the Green. The restoration was a fine example of a public-private partnership, with much involvement of the City of New Haven in restoring and revitalizing its central open space with new trees, sod, lighting, entries, and transportation facilities.

8. DELAWARE

SHPO

Bureau of Archeology and Historic Preservation
Division of Historic and Cultural Affairs
Hall of Records
15 The Green
Dover, DE 19901
(302) 739-5685

This SHPO office provides technical assistance, and functions primarily in an advisory capacity.

Other state agencies

Department of Agriculture
2320 South DuPont Highway
Dover, DE 19901
(302) 739-4811

The Agricultural Lands Preservation Program manages the Centennial Farm Program. It is also involved with the Bicentennial Farm Program.

Department of Natural Resources
Division of Parks and Recreation
89 Kings Highway
P.O. Box 1401
Dover, DE 19903
(302) 739-5285

This agency has completed an inventory under the State Natural Areas Program, and is also working on greenways projects which involve easements.

Private organizations

Historical Society of Delaware
505 Market Street
Wilmington, DE 19801
(302) 655-7161

This private group functions primarily as a clearinghouse and resource base.

9. DISTRICT OF COLUMBIA

SHPO

Historic Preservation Division
Department of Consumer and Regulatory Affairs
614 H Street, NW Suite 305
Washington, DC 20001
(202) 727-7360

This office has recently commissioned an inventory of historic landscapes within the District of Columbia. The purpose of the study is to develop a methodology for documenting and evaluating historic landscapes and open space including specific landscape criteria, sample survey files, and a historic context report.

Private organizations

L'Enfant Trust
2013 O Street, NW
Washington, DC 20036
(202) 785-9184

The L'Enfant Trust holds easements on historic buildings in D.C. A subsidiary, "Trees for the City", is working to replace trees along the historic streets and avenues in Washington. Working with existing city planting plans, this private/public partnership is involved with street tree planting projects in a number of neighborhoods.

10. FLORIDA

SHPO

Bureau of Historic Preservation
Division of Historical Resources
500 South Bronough Street
Tallahassee, FL 32399-0250
(904) 487-2333

This SHPO addresses historic landscapes in many of their programmatic areas such as reviewing state land management plans, compliance issues, and National Register nominations. Many of the historic landscapes of interest to the office provide the setting to historic buildings, such as estates.

Local governments

Metro Dade Historic Preservation Division
Office of Community and Economic Development
111 Warner Place
Southwest 5th Avenue
Miami, FL 331130
(305) 545-4228

This county owns several historic sites, including Vizcaya. The landscape and grounds at Vizcaya are locally-designated landmarks.

Private organizations

Florida Trust for Historic Preservation
P.O. Box 11206
Tallahassee, FL 32302
(904) 224-8128

This is the statewide private, nonprofit advocacy group for preservation in Florida. It holds an annual conference, sponsors regular

meetings, and publishes a bimonthly newsletter.

Alachua Conservation Trust
1105 North Main Street, 28-D
Gainesville, FL 32601
(904) 375-4560

This land trust exists to protect historic resources and archeological sites as well as natural areas in Alachua County.

Land Trust of Dade County, Inc.
P.O. Box 171473
Miami, FL 33017-1473
(305) 577-2933

This two year old land trust promotes the preservation, conservation, and restoration of historic lands and properties as well as archeological sites in Dade County. It accepts government or private donations of easements and facilitates acquisition of threatened land. It is also working to acquire tax benefits for environmentally sensitive projects.

Florida Keys Land and Sea Trust
P.O. Box 536
Marathon, FL 33050
(305) 743-3900

This organization exists to preserve and interpret the natural and cultural history of the Florida Keys. This includes American Indian and early pioneer sites such as Atterly Town at Crane Hammock Point, a 1905, ten acre Bahamian village, and the Key West Salt Ponds which are wetlands containing remnants of a circa 1850 salt works.

11. GEORGIA

The State Historic Preservation Office is the leader in landscape preservation in Georgia. Their publication, *Georgia's Living Places: Historic Houses in Their Landscaped Settings*, demonstrates the importance of historical and cultural landscapes. The University of Georgia is another asset to the state.

SHPO

Department of Natural Resources
Division of Parks, Recreation, and Historic Sites
205 Butler Street, SE
Floyd Towers East, Suite 1252
Atlanta, GA 30334
(404) 656-3500

In February, 1991, The State Historic Preservation Office published a comprehensive guide entitled *Georgia's Living Places: Historic Houses in Their Landscaped Settings*. The project was divided into two phases. The first focused on the identification and evaluation of historic resources; the second focused on preservation and evaluation. The section of the study dedicated to landscape architecture provides a history of Georgia's landscape heritage, approaches to landscape preservation, and an extensive list of information sources. This precedent-setting publication presents the role of preservation in both architecture and landscape architecture.

Private organizations

Georgia Trust for Historic Preservation
1516 Peachtree Street, NW
Atlanta, GA 30309
(404) 881-9980

The Trust is the statewide nonprofit preservation organization for Georgia. It provides technical assistance, educational programs, and advocacy for the cultural and historic resources of Georgia. The Trust manages three historic properties.

Sautee Nacoochee Community Association
P.O. Box 66
Sautee Nacoochee, GA 30571
(404) 878-3300

This community-based organization works to preserve the historic Sautee Nacoochee Valley. The purpose of the Sautee-Nacoochee Valley's Preservation Study was to develop a comprehensive plan outlining procedures for the preservation, conservation, and interpretation of the land area and historic structures contained in the Sautee and Nacoochee Valleys. This comprehensive preservation plan serves as a model for Georgia and other states.

12. HAWAII

SHPO

Department of Land and Natural Resources
P.O. Box 621
Honolulu, HI 96809
(808) 548-6550

The SHPO is concerned with preserving the context associated with historic districts as well as Hawaii's architecture and landscape architecture, including vernacular historic resources.

Private organizations

Historic Hawaii Foundation
P.O. Box 1658
Honolulu, HI 96806
(808) 537-9564

This statewide organization is devoted to the preservation and perpetuation of historic traditions. Much of the group's work is related to heritage education programs. It has helped to develop an undergraduate curriculum in preservation at Hawaii Pacific University and a graduate program at the University of Hawaii.

Moanalua Gardens Foundation
1352 Pineapple Place
Honolulu, HI 96819
(808) 839-5334

This foundation offers educational programs fostering environmental and cultural awareness, working both in schools, and through continuing education. It has developed a technique of identifying and explaining historic landscapes through aerial photograph analysis.

13. IDAHO

SHPO

Idaho Historical Society
210 Main Street
Boise, ID 83702
(208) 334-3861

This SHPO has just submitted a National Register nomination for the community of New Sweden, a small nineteenth century ghost town whose homesite layout, farmsteads, and irrigation systems are virtually intact.

Other state agencies

Idaho Department of Parks and Recreation
Statehouse Mail
Boise, ID 83720
(208) 327-7444

This agency is currently working to bring together a group of public agencies, the Bureau of Land Management, two National Forests (Sawtooth and Challis), the Forest Service, and private organizations to continue work on a Centennial Commission project involving the Yankee Fork State Park. This innovative project, spread over a hundred miles, includes the ghost mining town of Custer, cemeteries, and an original historic toll road. The goal of the Centennial Commission project is to demonstrate the influence the mining industry had on the development and settlement patterns within the state.

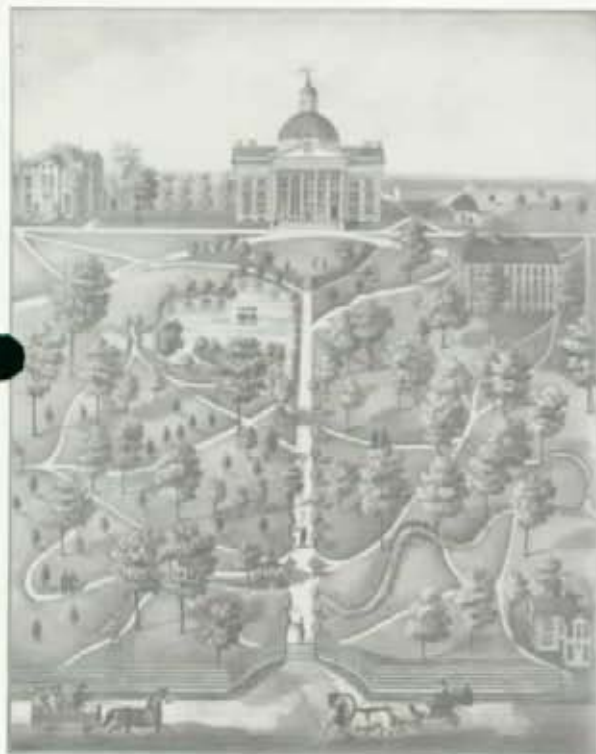
Private organizations

Idaho Heritage Trust
P.O. Box 9321
Boise, ID 83707
(208) 384-0176

This newly formed statewide preservation organization will raise funds to carry on the Centennial Commission's work in preserving the historic and natural resources of Idaho. It plans to complete work on the Oregon Trail by its 150th anniversary in 1993.

Historic Chesterfield Foundation
P.O. Box 7486
Boise, ID 83707

This private group was formed to preserve the townscape of Chesterfield, a prototypical Mormon town. The historic site includes visible house sites, fences, irrigation canals and some original trees. The Mormon town is now a rural historic district, and the Foundation is working to acquire property and scenic easements for further protection of the site.



Historic view, State University at Columbia, Missouri
Photo courtesy the Library of Congress

14. ILLINOIS

Much of the interesting landscape preservation work in Illinois is being done by several county Forest Preserve Districts. They are greatly involved in preserving prairie areas, as well as trying to re-establish prairie environments. The Chicago Park District is a very special organization, doing a great deal of innovative work within the city.

SHPO

Illinois Historic Preservation Agency
Old State Capitol
Springfield, IL 62701
(217) 785-0315

This SHPO manages a number of historic sites, many of which have significant historic landscapes.

Local governments

Chicago Park District
425 East McPetridge
Chicago, IL 60604
(312) 294-2226

This is the largest municipal park district in the country. It is a separate governmental entity, chartered by the State legislature and funded by tax revenues. The District is involved in a multitude of programs. In conjunction with the Chicago Art Institute the District is undertaking a full-scale inventory and conservation program for all its park sculpture. Many of the historic structures around the parks are being rehabilitated for other uses, such as museums. The District also sponsors exhibitions, two of which have addressed historic landscape themes

specifically. They work closely with community groups. Interns are used regularly throughout the agency.

City of Highland Park
1707 St. Johns Avenue
Highland Park, IL 60035
(708) 432-0867

In 1968, the Highland Park Historic District Commission published a detailed survey listing historic landscapes in the city, including information about their designers. The historic district ordinance provides for designating historic landscapes as landmarks.

Forest Preserve District of DuPage County
185 Spring Avenue
Glen Ellyn, IL 60138
(708) 790-4900

This is one of the oldest and largest of Illinois county forest preserves. Started in 1916, the district owns over 21,000 acres, in addition to holding conservation easements. Acquisition of additional land is funded by bond issues. The District has a great variety of educational programs, in addition to its recreational facilities. The District is undertaking a reforestation program, using seedlings of native trees and shrubs. A great deal of work is done with volunteers, and the group uses interns regularly.

Lake County Forest Preserve District
2000 North Milwaukee Avenue
Libertyville, IL 60048-1199
(708) 367-6640

This district, founded in 1958, is the third largest in Illinois, managing 18,000 acres.

Working with The Nature Conservancy, the District runs a volunteer stewardship program. The District also holds both scenic and conservation easements. It offers internships, as well as a fellowship, concentrating on environmental education and land use planning, as well as making use of many volunteers.

Private organizations

Morton Arboretum
Route 53
Lisle, IL 60532
(708) 968-0074

The Arboretum is doing extensive work in restoring prairie land, studying trees and soils, and experimenting with the re-creation of wetlands. In addition, it has archives on landscape architects Jens Jensen and O.C. Simonds.

Open Lands Group
220 South State Street #1880
Chicago, IL 60604
(312) 427-4256

Formed in 1963, the Open Lands Group started as an urban conservation group that tried to create a 1,000 mile network of greenways in northeastern Illinois. The organization currently works as an advocate, developing policy, and sponsoring conferences. A subsidiary, Corlands, is a land trust that uses a revolving fund to acquire and hold land no more than three years before turning it over to the appropriate public agency. Corlands also holds easements. The group utilizes interns.

Canal Corridor Association
220 South State Street #1880
Chicago, IL 60604
(312) 427-4256

The Canal Corridor Association was founded in 1984 when the first National Heritage Corridor was established along the Chicago-Michigan Canal. The corridor runs from Chicago through old canal towns, parks, and some neglected areas. The Association is trying to aid in the reclamation of unused areas and the economic revitalization of various downtown areas in the corridor.

15. INDIANA

Much of the innovative work in Indiana is being done by the Historic Landmarks Foundation of Indiana. There is a new statewide Rural Preservation Council, with a strong agricultural representation. This reflects Indiana's focus on preserving farmland. The National Trust is also involved with a pilot project on rural/agricultural preservation in Indiana.

SHPO

Division of Historic Preservation and Archeology
Department of Natural Resources
402 West Washington Street
Room 274
Indianapolis, IN 46204
(317) 232-1646

Historic landscapes are addressed in many aspects of the work of this office. It reviews National Register nominations, many of which have included designed and vernacular landscapes. The Division provided a grant to the Historic Landmarks Foundation of Indiana for National Register nominations in Rush County, which included an historic farmstead. In addition to Section 106 review, the office reviews alterations to state-owned properties and those listed on the State Register. It has provided a grant to Indiana University to survey and prepare a multiple property nomination for state parks with CCC sites and structures.

Other state agencies

Division of Outdoor Recreation
Department of Natural Resources
Indianapolis, IN 46204
(317) 232-4067

This division does planning and environmental review, as well as administering the streams and trails programs. It holds workshops throughout the state. The office is involved with the Wabash River Heritage Corridor Program, a five-county effort to develop trails and recreational facilities.

Private organizations

Historic Landmarks Foundation of Indiana
340 West Michigan Street
Indianapolis, IN 46202
(317) 639-4534

This statewide private preservation organization also has offices in Greencastle, Jeffersonville, and South Bend. Much of the Foundation's work is coordinated with agricultural programs in Indiana. For example, it is beginning to develop a historic farmstead award program, and to interact with several agricultural events. The organization owns various properties, holds easements, and provides training and technical assistance. The work in southern Indiana involves a Scenic Byways Commission. The foundation is also working to redefine the Lincoln Trail and the George Rogers Clark Trail, and to develop a scenic route along the Ohio River. The Foundation uses interns.

16. IOWA

Formal program involvement with designed and rural landscapes dates to the early 1980's in Iowa. A number of landscape-related contexts have been developed. The landscape architecture academic community and the Department of Natural Resources play a vital role in program planning

SHPO

State Historical Society of Iowa
Capitol Complex
East 6th and Locust Street
Des Moines, IA 50319
(515) 281-4358

The Amana Colonies survey first recognized the importance of a planned rural landscape. Historic landscape studies of Terrace Hill, the home of Iowa's governors, was funded in part by the Iowa program. Historic parks and urban planned landscapes were recognized in projects involving Crapo Park in Burlington. More recent contexts studies included the City Beautiful Movement, the role of the Civilian Conservation Corps and Works Progress Administration in the State parks, the Conservation Movement in Iowa, rural historic districts and landscape (Norwegians in Washington Prairie, Danish and Germans in Shelby and Audubon Counties). A state cemetery preservation workshop in 1989 treated the landscape component of that resource. Unpaid internships are available.

17. KANSAS

SHPO

Kansas State Historical Society
120 West 10th Street
Topeka, KS 66612
(913) 296-4788

This SHPO is a multi-purpose agency that manages fifteen historic properties, some of which involve archeological sites and Civil War battlefields. The Society also operates a library, the State archives, and the largest museum in Kansas. Students in the Landscape Architecture Department at the University of Kansas have undertaken historic landscape projects, such as a survey of the type of gardens created around historic train stations.

Other state agencies

Public Information Office
State Board of Agriculture
901 South Kansas Avenue
Topeka, KS 66612-1280
(913) 296-3571

The Agriculture Board runs a Traditional Farm Program similar to those in Texas and Oklahoma.

State Department of Transportation
915 Harrison Street
Topeka, KS 66612-1568
(913) 296-4140

The Department is working with Kansas State University to develop criteria for the designation of scenic roads in collaboration with Missouri, Nebraska, and Iowa.

Kansas Department of Wildlife and Parks
Route 2, Box 54A
Pratt, KS 67124
(316) 672-5911

This agency operates a number of state parks. These parks are mainly recreational, but they do include a few historic resources.

Local governments

City of Mission Hills
Kansas City, KS
(913) 362-9620

This historic suburb of Kansas City is currently working on a landscape survey and inventory of its historic parks, which include many circa 1920-30 landscape structures.

18. KENTUCKY

There are a number of interesting landscape projects going on in Kentucky, both rural and urban. In 1988, the Kentucky legislature enacted a Conservation Easement law and in 1990, passed enabling legislation for transfer of development rights programs. Neighborhood associations related to the Pisgah Pike Historic District, Boone Creek, and the Athens Historic District are involved in advocacy activities related to the preservation of these areas. Efforts are also underway to protect and interpret the Perryville Battlefield National Historic Landmark.

SHPO

Kentucky Heritage Council
677 Comanche Trail
Frankfort, KY 40601
(502) 564-7005

The work of this SHPO includes site identification and survey of properties to be considered for the National Register, with special emphasis on and landscape features and development of cultural landscape contexts. The Council's Rural Preservation Program incorporates historic preservation, natural resource conservation, cultural heritage enhancement, farmland retention, and the protection of open spaces and scenic views. The program has dual goals of protecting rural buildings and landscapes as well as meeting the social and economic needs of rural communities. To accomplish the mission of the Rural Program, the Council offers technical assistance to local governments, works cooperatively with conservation groups and land trusts, holds easements on historic properties, and provides public education through research and seminars. The office is also working in

partnership with the American Battlefield Protection Program to protect battlefield landscapes. Together with the Bluegrass Area Development District, the Heritage Council is developing a Rural Preservation Planning Handbook, which will outline public and private preservation techniques in a "user friendly" guide.

Local governments

Bluegrass Area Development District
3220 Nicholasville Road
Lexington, KY 40503
(606) 262-6656

The Bluegrass Area Development District (ADD) provides planning and zoning assistance to a seventeen-county region. In consulting with Bluegrass counties on comprehensive planning, zoning ordinances and subdivision regulations, the Bluegrass ADD provides counties with information about the most current land use tools that preserve and protect the Bluegrass landscape, while permitting well-managed and well-placed growth and economic development. The ADD also holds seminars and training workshops to educate local officials and the public about the role of planning in preservation and development activities.

Lexington/Fayette Greenspace Conservancy Commission
Urban/County Government Building
200 East Main Street
Lexington, KY 40507
(606) 258-3265

The mission of the Commission is to provide for the preservation and enhancement of Lexington and Fayette County's quality of life,

and to safeguard the region's scenic beauty and cultural and historic heritage. The proposed greenspace ordinance will ensure a balance between development and growth, and the preservation of historic and environmental resources.

Lexington/Fayette Office of Historic Preservation
Urban/County Government Building
200 East Main Street
Lexington, KY 40507
(606) 258-3265

This office conducts historic preservation activities and coordinates with the Greenspace Commission. It is surveying rural areas to identify districts with significant landscapes and historic resources.

Georgetown-Scott County Joint Planning Office
100 Court Street
Georgetown, KY 40324
(502)863-9811

Through a citizen-based comprehensive planning effort, this county adopted a model historic resources plan, with special emphasis on rural resources, and recommended a plan to implement a transfer of development rights program.

Jefferson County Office of Historic Preservation and Archives
810 Barrett Avenue
Urban Government Center
Louisville, Ky 40204
(502) 625-5761

This office conducts historic preservation activities in Jefferson County with an emphasis

on preserving suburban and rural historic landscape through easements and other means. The Blackacre Farm in the Tyler Settlement has been protected as a working farm and educational facility.

Private organizations

Lexington-Frankfort Scenic Corridor, Inc.
4600 Old Frankfort Pike
Lexington, KY 40510
(606) 254-5883

This group worked with the Brandywine Conservancy to develop base maps, and is now adding an inventory of historic resources and a driving tour with signs and pamphlets for the ninety-five square mile corridor. As a result of their work, several major rural districts have been added to the National Register.

Louisville Friends of Olmsted Parks
1142 Charles Street
Louisville, KY 40204
(502) 637-4659

Louisville is currently celebrating the centennial of its park system, designed by Frederick Law Olmsted Sr., including sixteen parks and five connecting parkways. In addition to planning for the restoration of these parks, the organization is working with neighborhood associations. LFOP served as a catalyst in helping the city establish the Louisville Olmsted Parks Conservancy, patterned after the Central Park Conservancy. It is in the process of creating a master plan of the Louisville park system. It will then implement the plan and generate endowment funds.

Elkhorn Land and Historic Trust
100 Court Street
Georgetown, KY 40324
(502) 863-9811

This all-volunteer group has gradually expanded to undertake work in four counties through an Intercounty Planning Consortium -- a first for Kentucky. The Trust is concerned with historic, cultural, natural, scenic, and recreational resources and tourism along the Elkhorn Creek Corridor and in the Bluegrass Cultural Landscape. It received a grant from the Kentucky Heritage Council to develop an assessment and management plan to protect and enhance this heritage corridor. The organization may acquire by donation or purchase conservation easements or entire properties.

Bluegrass Tomorrow
400 East Vine Street
Suite 307
Lexington, KY 40507
(606) 259-9829

This nonprofit group is serving to coordinate planning and growth management efforts in a seven-county area around Lexington. It is working with the Kentucky Heritage Council to preserve the cultural and historic landscapes of the Bluegrass region, including its many horse farms. Bluegrass Tomorrow has commissioned a private organization to suggest proposals for alternative development plans.

Land and Nature Trust of the Bluegrass
139 Market Street
Lexington, KY 40507
(606) 885-4057

This a nonprofit organization of volunteers dedicated to the conservation of the Central Kentucky landscape. It monitors the actions of planning boards and legislative bodies and acts to influence public policy decisions. The organization has played an advocacy role in the preservation of significant cultural resources and has undertaken educational and research projects related to the cultural and natural heritage of the region. Currently, the group is working to protect the historic and scenic Paris Pike Corridor and is preparing a National Register District nomination for the Boone Creek Corridor.

Scenic Kentucky
Post Office Box 2646
Louisville, KY 40201
(502) 588-8839

This organization works to protect Kentucky landscapes through legislation and education to fight visual pollution and promote scenic highways. It is associated with Scenic America.

19. LOUISIANA

SHPO

Office of Cultural Development
Division of Historic Preservation
P.O. Box 44247
Baton Rouge, LA 70804
(504) 342-8160

This office is working to coordinate efforts to inventory and preserve remaining viewsheds on the River Road as well as joining the Cane River Corridor Study in an effort to protect forty miles of the river and twelve adjoining plantations.

Private organizations

River Road Coalition
Oak Alley Plantation
Vacherie, LA 76090
(504) 265-2151

This activist group, headquartered at historic Oak Alley, is working to control industrial development and pollution along a thirty mile stretch of the historic west bank of the River Road between Baton Rouge and New Orleans.

20. MAINE

There are a number of interesting programs going on in Maine, primarily relating to land near the coast. Local land trusts have been very effective here.

SHPO

Maine Historic Preservation Commission
55 Capitol Street, Station 65
Augusta, ME 04333
(207) 289-2132

The Commission publishes a series of publications entitled the *Biographical Dictionaries of Architects in Maine*, including landscape architects. It also provides grants to many different organizations and occasionally uses interns. In addition to holding easements on properties with historic landscapes, MHPC works with a special commission to supervise the Statehouse grounds and Capitol Park.

Other state agencies

Maine State Planning Office
Critical Areas Program
Station 38
Augusta, ME 04333
(207) 289-6041

This planning program has been in existence for fifteen years. Its original mission was to inventory the botanic, zoologic, geologic, and scenic areas of Maine. Once these areas were identified, their owners were notified and encouraged to conserve their properties. The Program also developed a list of endangered plants. More recent work has focused on identifying areas along the coast that have

special value -- whether historic or scenic. The role of the Program is not to acquire land. Rather, it concentrates on education and increasing public awareness.

Private organizations

Greater Portland Landmarks
165 State Street
Portland, ME 04101
(207) 774-5561

The local historic district ordinance includes several landscape districts. Work is also beginning to develop on urban trails adjacent to several Olmsted parks.

Maine Coast Heritage Trust
167 Park Row
Brunswick, ME 04011
(207) 729-7366

This trust also has an office in the Acadia National Park area. Its primary role has been as a facilitator of easements, but now it is beginning to hold more land in fee. Much of their work has been with 60 local land trusts and organizations such as The Nature Conservancy, the State of Maine, and the National Park Service. Currently it is working on Mt. Desert Island to protect the boundaries of Acadia National Park. Much attention is being given to scenic roads, important agricultural properties, and nearby islands. The Trust uses both volunteers and interns.

MaIne Olmsted Alliance for Parks and
Landscapes
P.O. Box 6176
Falmouth, ME 04105

This organization is dedicated to the protection and preservation of Maine's historic designed landscapes, many of which are the work of Olmsted, Manning, Steele, and Farrand. The first phase of its survey work will concentrate on public parks, and later work will look at residential design, city and regional planning projects, and institutional grounds.

21. MARYLAND

Maryland is involved with a range of preservation activities, including a Rural Historic Village Protection Program and county projects relating to rural roads. There are many land trusts active within the state. Maryland has a very successful program for the purchase of development rights for agricultural land, supplemented by very strict agricultural zoning and a system for transferring development rights. The State also uses funds from real estate transfer taxes to acquire public open space.

SHPO

Maryland Historical Trust
100 Community Place
Crowsville, MD 21032-2023
(301) 514-7600

This SHPO functions within the Division of Historical and Cultural Programs, Department of Housing and Community Development. In addition to providing technical assistance and holding an annual preservation conference that has a session on landscapes, it holds more than 325 preservation easements (many in conjunction with the Maryland Environmental Trust). Recently it has been working on a Rural Historic Village Protection Program, securing easements on the periphery of small towns in order to control development. The Trust also chaired the "Preserving St. Mary's Townlands Study Committee" in 1989-1990. This group provided a variety of recommendations on how to better preserve and protect historic landscape viewsheds around Historic St. Mary's City, the National Historic Landmark site of Maryland's first state capital.

Other state agencies

Department of Natural Resources
Public Lands Division
2012 Industrial Drive
Annapolis, MD 21401
(301) 974-7002

This agency is responsible for managing approximately 300,000 acres of public lands, which include dozens of historic buildings. It operates a curatorship program, and is always seeking resident curators to care for, restore, and lease many of these structures. The Department is also concerned with the landscape around these structures.

Local governments

Maryland National Capital Park and Planning Commission
Prince George's County Planning Department
14741 Governor Oden Bowie Drive
Upper Marlboro, MD 20772
(301) 952-4392

In 1988 the Historic Preservation Section commissioned a study of historic landscapes and scenic roads that included proposals to implement the suggestions through the county's master planning procedures. Current work includes studying a rural village to protect the landscape and viewshed around it, using the tools of a master plan, zoning, and design guidelines. The County is also doing work on scenic and historic roads.

Private organizations

Friends of Maryland's Olmsted Parks and Landscapes

2942 Guilford Avenue
Baltimore, MD 21218
(301) 243-2156

In 1989 the FMOPL began the survey and inventory of Olmsted's Latrobe Park in Baltimore. In conjunction with the ASLA Community Assistance Team project, the group developed the "Revitalization Plan for Wyman Park Drive/ 33rd Street Corridor." The FMOPL produces a newsletter, *The Olmstedian*, sponsors conferences, and exhibitions on the work of Frederick Law Olmsted.

Preservation Maryland

24 West Saratoga Street
Baltimore, MD 21201
(301) 685-2886

This statewide nonprofit group functions primarily as a networking organization and as an advocate. It owns some historic properties and it holds easements. Preservation Maryland has a revolving loan fund to help purchase endangered historic properties.

Maryland Environmental Trust

275 West Street, Suite 322
Annapolis, MD 21401
(301) 974-5350

The goal of the Trust's easement program is to help preserve farmland, forestland, waterfront, rare or unique natural areas, scenic areas, endangered species habitat, historic properties, and other kinds of rural land. In addition to holding many conservation easements, the Trust assists local land trusts (helping with their

administrative costs and holding easements jointly) and runs an awards program -- "Keep Maryland Beautiful"-- targeted at school children and environmental groups. It also provides technical assistance, training, and runs conferences. Much of the groups recent focus has been on the Rural Historic Village Protection Program, begun in 1988, run in cooperation with the Maryland Historical Trust, the Chesapeake Bay Foundation, and the Maryland Agricultural Land Preservation Foundation. The Trust offers landholders a combination of easement options.

Save Historic Antietam Foundation

P.O. Box 550
Sharpsburg, MD 21782
(301) 791-7880

This group formed to serve as an advocate for the entire county, working with both citizens and county organizations. The Foundation issues a countywide publication, printing information about the activities of many different groups. It helped to develop the nation's first overlay zone for historic scenic protection, restricting development within the viewshed of Antietam Battlefield. There is also a Historic Preservation Zone within the county; properties are eligible for inclusion within the historic district only at the owner's request.

22. MASSACHUSETTS

Massachusetts has been one of the most innovative and productive states in its attention to historic landscape preservation at both the State and local level. In addition, a number of private organizations, such as the Trustees of Reservations, offer direction and stewardship in the field of landscape preservation. Unfortunately, recent budget cuts and the declining economy in the Northeast have greatly affected historic landscape programs within the public and private sector.

SHPO

Massachusetts Historical Commission
80 Boylston Street, Suite 310
Boston, MA 02116
(617) 727-8470

In addition to administering the Federal historic preservation programs, the MHC also administers a State Register of Historic Places and provides technical assistance in areas of architectural history and archeology.

Other state agencies

Department of Environmental Management
Division of Resource Conservation
100 Cambridge Street Room 1404
Boston, MA 02202
(617) 727-3160

This agency manages state parks, several of which have notable historical landscapes -- such as Walden Pond and the urban heritage state parks like Lowell. In addition, DEM provides technical assistance related to historic landscape preservation. Until recent budget cuts, the Office of Cultural and Historic Landscapes

administered the first statewide program devoted to the rehabilitation of municipal Olmsted parks, a City and Town Commons program, and a statewide scenic landscape inventory. The agency is considering a program to lease historic state properties to individuals who will undertake appropriate restoration activities and/or maintain the historic agricultural landscape.

Department of Public Works
Open Space Program
10 Park Plaza
Boston, MA 02116-3973
(617) 973-7323

This Program was begun by the Department of Transportation in 1986. The intention was to purchase land for the preservation, restoration, or enhancement of scenic ways adjacent to public lands (such as highways). This unique program made the preservation of viewsheds part of DOT's policy. Nonprofit organizations and state environmental agencies helped acquire non-adjacent lands, often by establishing land trusts. There are no funds currently available for this program.

Metropolitan District Commission
20 Somerset Street
Boston, MA 02108
617) 727-5250

This State agency is responsible for managing State reservations within the metropolitan Boston area, including the first metropolitan park district in the country developed by Charles Eliot. Fiscal problems have greatly curtailed their recent activities. It has an intern program.

Local governments

Boston Parks and Recreation Department
1010 Massachusetts Avenue
Boston, MA 02118
(617) 725-4505

In the last few years, the City of Boston has developed some very strong programs which address the historic landscape resources in the city. Most notable are completed master plans now being implemented for the Emerald Necklace parks and the Boston Common Management Plan, and the Historic Burying Grounds Initiative. The Parks Department operates almost 200 properties and facilities. Its "Park Partner" program provides funds and other incentives to community groups. The Department acts as a clearinghouse within Boston for all open space agencies, and it provides a liaison for community gardens and Urban Wilds. As the 1990s begin, it is operating with decreased funding and increased coalition-building and resource development goals.

Nantucket Historic District Commission
4 North Water Street
Nantucket, MA 02554
(508) 228-7231

The Commission has published *Building with Nantucket in Mind*, which contains guidelines for new development in both the historic town center and in rural heathland areas of the island.

Private organizations

Historic Massachusetts, Inc.
Old City Hall
45 School Street
Boston, MA 02108
(617) 723-3383

HMI is a coalition of Federal, State, and local organizations involved in historic preservation activities in Massachusetts. Its annual conference often has sessions devoted to historic landscape preservation, with material applicable to other States and regions of the country.

The Trustees of Reservations
572 Essex Street
Beverly, MA 01915
(508) 921-1944

Established in 1891 and called the Museum of the Massachusetts Landscape, The Trustees of Reservations was the first private land preservation organizations in the nation. Today it manages a number of important historic landscapes, such as Naumkeag, designed by Fletcher Steele.

Massachusetts Association for Olmsted Parks
Old City Hall
45 School Street
Boston, MA 02108
(617) 723-3383

The MAOP developed an inventory project in order to list important Olmsted designed public parks on the National Register of Historic Places, and to establish an example for the research and recording of historic landscapes. It is an advocacy and public education group which sponsors periodic lectures, tours, and

conferences. The MAOP has produced a number of publications related to the Olmsted landscapes in Massachusetts.

The Center for Rural Massachusetts
109 Hills North
University of Massachusetts
Amherst, MA 01003
(413) 545-4406

The Center is administered by the Department of Landscape Architecture and Regional Planning at the University of Massachusetts. It is a service organization, which works on projects and studies, primarily within the Massachusetts but also elsewhere in the Northeast. The aim of much of the Center's work has been to undertake innovative land use planning for rural communities in order to protect their character without stifling development. It has done interesting work with computer graphics to simulate zoning.

23. MICHIGAN

Much of the landscape preservation work going on in Michigan is centered on the preservation of hundreds of miles of shoreline. Michigan has a very strong county extension agent program, which could be of great help in expanding rural preservation efforts. The Centennial Farm Program, which has a special designation for farms at least 150 years old, is separate from the SHPO's office.

SHPO

Bureau of History
Department of State
717 West Allegan
Lansing, MI 48918
(517) 373-6362

This SHPO manages a number of historic sites in addition to providing technical assistance. It offers an intern program.

Local governments

Historic Designation Advisory Board
204 City-County Building
Detroit, MI 48226
(313) 224-3487

Detroit has endured recent financial constraints which have limited preservation efforts of all kinds. The Board works with the Friends of Belle Isle, helping to protect this historic island park.

Private organizations

Michigan Historic Preservation Network
P.O. Box 398
Clarkston, MI 48347
(313) 625-8181

The Network is extremely active in many different aspects of historic preservation, working extensively on farmsteads (partly in conjunction with the Cooperative Extension Service of Michigan State University), maritime areas, and lighthouses. The Network is working to develop trailways and greenways wherever possible throughout Michigan.

24. MINNESOTA

SHPO

Minnesota Historical Society
Fort Snelling History Center
St. Paul, MN 55101
(612) 726-1171

The SHPO has administered a number of survey projects involving historic landscapes. The survey data is housed in the SHPO inventory. The History Sites Department of the MHS administers prehistoric and historic sites in Minnesota.

Local governments

Minneapolis Park and Recreation Board
310 4th Avenue South
Minneapolis, MN 55415
(612) 348-2142

This semi-autonomous elected board was established in 1883. In 1884, it commissioned H.W.S. Cleveland to develop an initial plan for the parks and a connecting parkway system. Since then, the Minneapolis park system has expanded greatly. City policy provides for a park within six blocks of any residence. "Parks for People" was established by the Park Board to raise private funds for projects recommended by the Board of Commissioners.

25. MISSISSIPPI

SHPO

Department of Archives and History
Division of Historic Preservation
P.O. Box 571
Jackson, MS 39205
(601) 359-6850

The Mississippi SHPO is devoting attention to identifying rural historical districts. The Department of Archives and History manages a few historical sites around the state, including the Grand Village of the Natchez Indians and Jefferson College at Washington. The "Old

Agency Road" in Madison County, the original Natchez Trace parkway has recently been designated as a State Landmark. The SHPO, through the power of the 1972 Antiquities Act, also has review authority over the landscapes associated with publicly-owned sites of cultural significance, including historic landscapes. Many of the Mississippi Landmarks contain significant landscape features. Staff archeologists have worked on the site of the rose garden at Beauvoir in Beloxi, now a National Historic Landmark. It is also working to lay the ground work for a county-wide CLG which would involve a preservation ordinance and preservation commission to protect rural resources.



St. John in the Wilderness, Flat Rock, North Carolina
Photo, NC Division of Archives and History, NPS files

Local governments

City Hall, Port Gibson
Box 607
Port Gibson, MS 39150
(601) 437-4234

This small town of 1,800 people which General Grant said was, "too beautiful to burn", has the smallest and newest Main Street Program in Mississippi. Strategically located on the roads to Natchez, Vicksburg, and Biloxi, it is rich in natural scenic beauty and circa 1800 architecture. A historic preservation ordinance is now pending before the city.

Meridian Planning Department
P.O. Box 1430
Meridian, MS 39302
(601) 485-1996

Highland Park, an "Olmsted-like" streetcar park, is being restored by the city. It contains an 1880's Dentzel carousel and its carousel house, which is a National Historic Landmark. The City has an active tree designation program. It also is researching historic precedents for plants, furniture and paving patterns for use in historic districts.

Private organizations

Mississippi Heritage Trust
P.O. Box 254
Vicksburg, MS
(601) 327-6241

This newly formed nonprofit organization is planning involvement in public education and awareness of preservation issues. It expects a strong landscape architecture and archeology contingent, and will concentrate on historic

rural roads such as the Jackson Military Road from Louisiana to Alabama and archeological sites of both American Indians and 18th century Europeans.

Historic Natchez Foundation
P.O. Box 1761
Natchez, MS 39121
(601) 442-2901

The Foundation worked closely with the city government to enact and develop the new historic preservation ordinance which includes protection for historic landscapes as well as buildings. The HNF has also tried to document historic landscape features for the city of Natchez, and it has begun working with the county government to develop controls in the surrounding countryside.

26. MISSOURI

Historic preservation activity in Missouri revolves around the two centers of St. Louis and Kansas City, both of which have important public park systems. ASLA chapters have been especially active here. The Friends of Tower Grove Park have worked to ensure the preservation of this Victorian landscape.

SHPO

**Department of Natural Resources
Historic Preservation Program**
Jefferson Building
P.O. Box 176
Jefferson, MO 65102
(314) 751-7858

This SHPO takes an active role in education programs. In addition to holding a statewide annual preservation conference and regional workshops, it is developing a heritage curriculum for schools, in conjunction with the Department of Elementary and Secondary Education. *Preservation Issues*, a newsletter for the preservation community, is published bi-monthly. The program's Historic Preservation Revolving Fund permits the acquisition and resale of historic properties and the acceptance of easements. The program awards annual Federal Historic Preservation Fund grants for historic surveys, including the identification of historic designed landscapes; recent grants have funded surveys of the park and boulevard system in Kansas City. Internships are available occasionally.

Other state agencies

Historic Sites Program
P.O. Box 176
Jefferson City, MO 65102
(314) 751-8458

This program is responsible for the restoration, operation, and interpretation of state-owned historic sites. Properties under its management include historic buildings, battlefields, cemeteries, and covered bridges. The program works to create appropriate landscape settings for the various historic sites and participates in the Historic Seed Program, with particular interest given to the fruit and vegetable seeds.

Local governments

Kansas City Parks, Recreation, and Boulevards
5605 East 63rd Street
Kansas City, MO 64130
(816) 444-3113

The Kansas City Parks system was planned 100 years ago by George Kessler. Efforts now are devoted to preserving his plans, with necessary additions done in Kessler's style. The Board has instituted a Bronze Restoration Program for Public Outdoor Art, which has been very effective in getting both public and private funds to restore the city's major monuments. It now has an Adopt-a-Fountain Program, using corporate and public funds.

27. MONTANA

SHPO

Montana Historical Society
Veterans Memorial Building
225 North Roberts
Helena, MT 59620-9990
(406) 444-7715

This SHPO office is active in landscape preservation efforts. The office works in conjunction with other Federal and State agencies in a variety of programs such as Scenic Highways and Heritage Corridors to preserve historic resources. In association with the U.S. Forest Service, the office has undertaken a survey and inventory of back country fire-fighting structures and their relationship to their setting.

Other state agencies

Department of Transportation
Montana Department of Highways
2701 Prospect Avenue
Helena, MT 59620
(404) 444-6200

This Department has both an active Scenic Roads program and a creative highway marker program. The markers, written by the Historic Society, discuss the historic importance of landscape features like gulches or mesas as well as mining town sites and the route of the Lewis and Clark Expedition.

Department of Fish, Wildlife and Parks
1420 East 6th Avenue
Helena, MT 59620
(406) 444-2535

This Department owns and manages many landscape areas of historic interest such as buffalo jumps, caves with Native American pictographs, mining town sites, quarries, and the Three Forks Camp Site of the Lewis and Clark Expedition.

28. NEBRASKA

SHPO

Nebraska State Historical Society
1500 R Street
P.O. Box 82554
Lincoln, NE 68501
(402) 471-4787

This SHPO acts in an advisory capacity on historic preservation issues. The office maintains files on landscape architects, and it seeks to identify and assist in the preservation of historic landscapes.

Local governments

City of Lincoln, Parks and Recreation
Department
555 South 10th Street
Lincoln, NE 68508
(402) 471-7491

The Parks and Recreation Department has a state-appointed cemetery board that develops programs to preserve the city's cemeteries.

Landmarks Heritage Preservation Commission
Omaha City Planning Department
1819 Farnam Street
Omaha, NE 68183
(402) 44-5208

The Commission is responsible for Certified Local Government programs that assist property owners in pursuing architectural or landscape designations.

Private organizations

Nebraska Statewide Arboretum
Thompson Library
Garden Level
University of Nebraska
Lincoln, NE 68583-0715
(402) 472-2971

This statewide arboretum serves as a network for forty-five arboreta throughout Nebraska. One of the roles of the Arboretum is to advise individuals and organizations with needs relating to preserving and identifying landscapes. Interns are accepted in conjunction with the Center for Plant Conservation.

29. NEVADA

SHPO

Department of Conservation and Natural
Resources
Division of Historic Preservation - Archeology
123 West Nye Lane, Room 208
Carson City, NV 89710
(702) 885-4360

This SHPO often deals with historic landscape issues. In partnership with the Department of Anthropology and the Historic Preservation Program at the University of Nevada, Reno, the Department is doing an inventory and evaluation of the historic mining sites and communities throughout the state and is preparing a plan for cultural resource management. It has done thematic work with rural school houses and plans future work on nuclear landscapes.

30. NEW HAMPSHIRE

There is a great range of programs relating to historic landscape preservation underway in New Hampshire. The State legislature has recently passed bills providing for scenic road protection and for scenic byways, which will maintain historic vistas. The Departments of Transportation and Historic Resources will collaborate to carry out this program. The State Legislature is also considering the establishment of Heritage Commissions, analogous to Conservation Commissions. Work is presently underway on the restoration of the gardens of the John Hay Estate on Lake Sunapee.

SHPO

Division of Historical Resources
Box 2043
Concord, NH 03302-2043
(603) 271-3558

This SHPO works closely with many other New Hampshire agencies, as well as with private and local organizations. It provides intensive training for volunteers in archeological research techniques. Some of these programs are coordinated with New Hampshire universities and colleges. Interns are used primarily for archeological projects.

Other state agencies

Division of Parks and Recreation
P.O. Box 856
172 Pembroke Road
Concord, NH 03302-0856
(603) 271-3254

This agency, which also works closely with the New Hampshire Department of Transportation

and the New Hampshire Division of Historical Resources, manages a number of historic sites. It also administers Heritage Parks, which tries to maintain aspects of traditional culture or industries such as logging are preserved.

Governor's Commission on New Hampshire in the 21st Century

Contact: The State Librarian
New Hampshire State Library
20 Park Street
Concord, NH 03301-6303
(603) 271-2239

This program ceased on July 1, 1991 after completing two years of work. Among the programs it recommended were a Civic Profile Program, directed toward rehabilitating civic infrastructure and helping to change planning and zoning techniques. The New Hampshire Cooperative Extension Program will help disseminate the model. The Commission also instituted a Community Cornerstone Program, a grass-roots information sharing effort directed toward both the living landscape and the built environment.

Private organizations

Inherit New Hampshire
118 North Main Street
P.O. Box 268
Concord, NH 03301
(603) 224-2281

This statewide networking organization provides technical assistance and information. It holds an annual statewide "town meeting," under corporate sponsorship, that offers workshops on many different aspects of preservation.

Society for the Protection of New Hampshire Forests
54 Portsmouth Street
Concord, NH 03301
(603) 224-9945

This statewide, nonprofit land trust was established in 1901. Its most important activity is land protection. It both owns land in fee and holds conservation easements. The properties are open to the public and managed for recreation and timber. The Society has a Local Lands Protection Program, that provides training and education for the many local land trusts. Much effort is devoted to the "living landscape", protecting and encouraging farming and forestry. The Society works closely with many State agencies as well.

New Hampshire Historical Society
30 Park Street
Concord, NH 03301
(603) 225-3381

The current focus of the Society is on a program entitled "The Land We Call New Hampshire," which demonstrates how landscape and people interact and affect each other.

Strawbery Banke
P.O. Box 300
Portsmouth, NH 03802
(603) 433-1100

This membership-supported preservation endeavor began 35 years ago, on a site settled in the 17th century. The major effort has been to interpret the way the site was used over the centuries. The area contains a number of structures from different eras, and each has been given an appropriate garden. The designs of all gardens are based on extensive

archeology at the site. Strawberry Banke holds an annual symposium on landscape history each February. Beginning in 1992, it plans to have a summer workshop on landscape history and preservation.

31. NEW JERSEY

SHPO

Department of Environmental Protection
Office of New Jersey Heritage
401 East State Street, CN 404
Trenton, NJ 08625
(609) 292-2023

The Office of New Jersey Heritage addresses rural and designed landscapes through its National Register, comprehensive survey, environmental review, and statewide planning programs. The Office encourages nominations that focus on rural historic districts, farmsteads, and designed historic landscapes. In addition, The ONJH funded a cultural resource survey to identify significant rural and designed landscapes. The environmental review program, under both Section 106 and the New Jersey Register of Historic Places Act, is utilized to protect landscape elements affected by public agencies' projects. Statewide planning documents identified farmsteads as one of the most important research priorities. A follow-up study of specific research question focused on "Nineteenth Century Farmsteads on the Inner Coastal Plain of New Jersey." ONJH is presently working with the New Jersey Department of Transportation and a county planning office to integrate planning for a large rural historic district that is within a State-designated Transportation Development District.

Other state agencies

Department of Environmental Protection
New Jersey Historic Trust
506-508 East State Street, CN404
Trenton, NJ 08625
(609) 984-0473

This program administers preservation grants, which benefit historic properties in the state, including landscapes.

Department of Environmental Protection
Natural and Historic Resources Group
(NJDEP/NHRG)
401 East State Street, 3rd Floor
Trenton, NJ 08625
(609) 292-3541

This office is focusing on efforts related to working landscapes. For instance, the office administers a Farmland Preservation Program, encouraging counties to buy development rights with funds from a "Greenacres" bond issue. The Group is also working on greenways, such as the Coastal Heritage Trail, the Skylands Greenway (along the Hudson River), and the Delaware River Greenway (in conjunction with Pennsylvania).

Department of Environmental Protection
Greenacres Division
1230 Whitehorse Mercerville Road
Trenton, NJ 08625
(609) 588-3450

The purpose of this program is to provide grants and loans to county and municipal governments to acquire both easements and land in fee. The Greenacres Program brings together many different entities and organizations to preserve historic landscapes.

Local governments

Morris County Park Commission
P.O. Box 1295
Morristown, NJ 07962-1295
(201) 326-7600

This county agency, run by appointed commissioners, manages over 10,000 acres of park land. While its current focus is on developing open space programs, the Commission operates several properties of historic significance, including Fosterfields Living Historical Farm, two arboreta, and Bamboo Brook, the home of landscape designer Martha Brookes Hutchinson.

32. NEW MEXICO

SHPO

Office of Cultural Affairs
Historic Preservation Division
Villa Rivera
228 East Palace Avenue
Room 101
Santa Fe, NM 87503
(505) 827-8320

The New Mexico SHPO administers Federal programs and deals primarily with archeological resources. In 1982, the Office developed a project to inventory historic landscapes. The report titled "First Annual Report: Registry of Historic Landscapes" was the first phase of the project. This project was funded by the State until 1990. Landscape preservation is an integrated part of the overall program in the New Mexico SHPO.

Local governments

Land Resources and Regulation Department
Open Space Division
City of Albuquerque
P.O. Box 1293
Albuquerque, NM 87103
(505) 873-6620

The Open Space Division conserves and protects natural landforms in and around Albuquerque. Current programs include the Northwest Mesa Escarpment Plan, which protects petroglyph and archeological sites and also includes design guidelines with provisions to protect historic settings.

33. NEW YORK

Many landscape preservation efforts are presently underway in New York state. Local and regional nonprofit preservation organizations are undertaking cooperative projects in both urban and rural communities. The Preservation League of New York has published a very complete and useful *Preservation Directory*, which provides information about many organizations throughout the state. New York City in particular has developed a range of programs to address its historic landscape issues. A number of successful organizations associated with specific historic properties are not included in this Directory. They include Riverside Park Fund, Prospect Park Alliance, Bryant Park Restoration, Springside Landscape Restoration, and the Downing Park Planning Committee. The Central Park Conservancy, which has served as a model for many urban park organizations, is described below.

SHPO

NY State Office of Parks, Recreation, and Historic Preservation
Empire State Plaza
Agency Building 1
Albany, NY 12238
(518) 474-0469

The Division of Historic Preservation of the Office of Parks, Recreation, and Historic Preservation is responsible for historic preservation issues. It is divided into three bureaus, which are described below.

Field Services Bureau
(518) 474-0479

This is the SHPO for New York State. The Bureau implements six interrelated

programs: the State and National Registers of Historic Places, Survey and Planning, Historic Preservation Tax Incentives, Environmental Review, Certified Local Governments, and Historic Preservation Grants.

Bureau of Historic Sites
(518) 237-8643

The Bureau provides technical historic preservation and professional museum services to the 34 historic properties owned by New York State. Their activities consist of research and interpretation, restoration (including landscapes), archeology, exhibit design, and conservation.

Urban Cultural Parks Program
(518) 473-2375

This program began in 1982; its goals are fourfold: preservation, education and interpretation, recreation, and economic revitalization. Currently there are 14 urban parks, encompassing 22 participating communities. These parks include greenways, traditional parks, Main Street preservation projects, and cultural resources. Each park has a specific theme that helps to define the history of New York State such as transportation, labor, the reform movement, and defense, etc.

Other state agencies

Division of Coastal Resources and Waterfront Revitalization
Department of State
162 Washington Avenue
Albany, NY 12231
(518) 474-6000

This division administers a Federally-funded program established under the Coastal Management Zone Act of 1972. Two policies relate directly to scenic resource protection and may be used to preserve historic landscapes. The New York Secretary of State may designate areas to be protected, based on their quality, uniqueness, public accessibility, and public recognition. These criteria are currently being applied to tidal areas along the Hudson River. The second policy encourages local governments to develop local waterfront revitalization plans to protect and restore natural and manmade features that are important but not of landmark status.

Department of Environmental Conservation
50 Wolf Road
Albany, NY 12233-0001
(518) 457-2224

The responsibility of the Division of Regulatory Affairs is to review all applications for construction to ensure compliance with the New York State Environmental Quality Review Act. This review includes an evaluation of the impact of a proposed project on a historic area, and thus can be a significant tool in preserving viewsheds as well as historic settings.

New York State Council on the Arts
915 Broadway
New York, NY 10010
(212) 614-2962

Through its Division of Architecture, Planning, and Design, the Council provides grants to a number of organizations working in the field of historic landscape preservation.

Private organizations

Preservation League of New York State
307 Hamilton Street
Albany, NY 12210
(518) 462-5658

This statewide nonprofit organization has received a portion of its funding from the SHPO and from the New York State Council on the Arts. Its Albany office handles general business for the entire State, while the Binghamton office serves as headquarters for their legal work. The League provides technical services, undertakes training programs, and publishes and distributes many publications.

New York Landmarks Conservancy
141 5th Avenue
New York, NY 10010
(212) 995-5260

The Conservancy is dedicated to saving and revitalizing landmark structures and districts through the rehabilitation of historic properties, grants and loans, technical assistance, and publications. The program Sacred Sites and Properties, provides financial assistance statewide through grants for the maintenance and restoration of religious properties.

New York Parks and Conservation Association
35 Maiden Lane, Box 309
Albany, NY 12201
(518) 434-1583

In addition to its work in protecting and improving Federal and State parks, the Association is developing new approaches to protect both natural and historic landscapes. The organization sees itself as a catalyst that establishes partnerships with communities and corporations, expanding recreational and educational opportunities, and encouraging economic development and tourism. The approach in each area is to establish a regional steering committee composed of civic and corporate leaders. While the Association provides guidance, the actual work is done at the local level. Following its initial project, the Delaware and Hudson Heritage Corridor, the Association has helped develop other corridor and greenway projects.

New York State Association for Olmsted Parks
373 Lincoln Parkway
Buffalo, NY 14216
(716) 875-4713

This organization was formed in 1986 in order to build a network of communication between park advocates statewide. The Association sponsors conferences, exhibits, and publications.

Open Space Institute, Inc.
145 Main Street
Ossining, NY 10562
(914) 762-4630

The Institute, founded in 1963, combines both advocacy and land preservation activities. It has a revolving fund to acquire land, add

easements, and resell it to the State or Federal government. OSI has concentrated its efforts in the Hudson River Valley, where it supports citizens' action programs to oppose inappropriate development. The group has programs for interns and volunteers, including a program to place urban youths in conservation programs.

Buffalo Friends of Olmsted Parks
P.O. Box 590
Buffalo, NY 14205
(716) 838-1249

Buffalo has a number of parks designed by Frederick Law Olmsted and his firm between 1868 and 1900, including six parks with connecting parkways and the Parkside neighborhood. Friends of Olmsted Parks is an advocacy group, which publishes a newsletter and sponsors many lectures and tours.

Central Park Conservancy
830 5th Avenue
New York, NY 10021
(212) 860-1800

This nonprofit group has been a model for similar organizations around the country. The Conservancy works in many ways, from augmenting city funds to implementation of the master plan for the management and restoration of Central Park. To date, it has spent about \$75,000,000 -- one-third in privately donated funds, the balance from the city. Emphasis currently is on the northern end of the park, developing approaches to maintaining this "urban forest." There are plans to develop a new visitors' center, in response to new uses for this section of the park. The Conservancy works closely with Columbia University's preservation program, and also has an

extensive summer youth intern program, as well as thousands of volunteers. It has produced a number of noteworthy publications.

City Parks Foundation
The Arsenal, Room 280
Central Park
New York, NY 10021
(212) 360-1399

This group was established in 1989 to raise private funds for the enhancement of city parks and recreation centers that did not have their own foundation or support group. It has undertaken a number of efforts to renovate sites. It is also involved with a major urban forest and wetland renewal project, removing invasive exotic species and doing reforestation.

Historic House Trust of New York City
The Arsenal
Central Park
New York, NY 10021
(212) 360-8123

This Trust was started to raise funds for the 16 historic houses owned by New York City that are located on City parkland. These houses have a variety of settings and landscapes, many of which are much reduced from the original property. The Trust plans to research these sites and assist with their interpretation. The Trust is assisted in this effort by the Division of Horticulture in the Department of Parks and Recreation.

Landmarks Society of Western New York
133 South Fitzhugh Street
Rochester, NY 14608
(716) 546-7029

This nonprofit group, established in 1937, functions as the regional historic preservation advisory agency, primarily in Rochester and its eight surrounding counties. In partnership with the SHPO, the Society has recently expanded its activities to fifteen counties through its Preservation Outreach Partnership. Increasingly, its efforts are aimed toward preservation in small towns and villages. The Society uses interns.

Preservation Coalition of Erie County
P.O. Box 768
Buffalo, NY 14213
(716) 873-3626

This membership group views itself as a watchdog, promoting grass roots advocacy. It publishes an excellent newsletter, and regularly conducts tours around Buffalo as a way of raising both community awareness and funds.

Society for the Preservation of Long Island Antiquities
93 North County Road
Setauket, NY 11733
(516) 941-9444

The Society's focus includes the remains of many grand estates and historically significant gardens. It works closely with a number of historic properties, including Planting Fields and Old Westbury Gardens, in addition to operating six house museums.

Sunnyside Foundation
41-13 47th Street
Sunnyside, NY 11104
(718) 392-9139

Sunnyside is an early planned community in Queens, designed in the 1920's by Clarence Stein and Henry Wright. The Foundation was started in 1981 to encourage homeowners to comply with existing zoning restrictions and preserve the historic appearance and open space character of the neighborhood. Sunnyside is designated a "Special Preservation District," which prevents alterations to topography within the zone. The original plan created a series of "courts" with open space easements, which unfortunately had only a 40-year life span. Sunnyside also has a voluntary conservation easement program, set up with help from the Trust for Public Land, to reinstate the original open space easements.

34. NORTH CAROLINA

North Carolina has several local preservation commissions, many of which are involved with open space preservation. Under State law, owners get a percentage of their property taxes deferred if their property is designated as a Landmark. The North Carolina legislature has provided for an "Appearance Commission" in each local government jurisdiction. These commissions may be involved in aesthetic decisions, and they may initiate planning efforts. The Roanoke Canal Commission has worked to identify and restore a section of the Roanoke Navigational Canal.

SHPO

Division of Archives and History
109 East Jones Street
Raleigh, NC 27611-2807
(919) 733-6545

This SHPO office has done considerable work nominating rural historic landscapes and districts to the National Register. The Lake Landing Historic District in Hyde County is composed of 13,000 acres and 200 contiguous farms. The local Preservation Commission in Watauga County (one of over 70 in the State) has established an initiative to review future building in the unzoned rural Valle Crucis Historic District.

The Historic Sites Division manages 23 state-owned historic properties, selected to illustrate the major themes and periods of North Carolina history throughout the State. It gives particular attention to the landscape setting of these properties. In addition to trying to restore historic landscapes through research and archeology, the agency is also concerned about the areas outside the boundaries of historic

properties. Internships are available through the State government intern program.

Stagville Preservation Center
P.O. Box 71217
Durham, NC 27722-1217
(919) 620-0120

The Center is also an historic site, used for hands-on education programs. It offers many African-American interpretive programs, focusing on culture and history. The center uses interns occasionally.

Local governments

Historic Properties Commission
City of Raleigh Planning Department
P.O. Box 590
Raleigh, NC 27602
(919) 890-3125

This local agency has designated a number of designed landscapes and has developed criteria for the designation of historic and cultural landscapes. The Commission is working to broaden the preservation efforts related to landscapes as well as monuments, particularly in minority neighborhoods, by inventorying and analyzing existing 20th century neighborhoods to preserve their character. It also has a pilot program for managed change and protection of the existing rural landscape along US Route 401, inventorying the cultural resources along it and planning for their protection as future development occurs. The Commission has an active tree designation program and landscape ordinance, which are a result of its Appearance Commission. Raleigh has provided for neighborhood conservation overlay districts in its zoning ordinances, intended to accomplish small-scale planning at the request of neighborhoods. These districts must have a

distinctive character, which is described by an inventory and analysis of many aspects. Raleigh is also working hard to identify historical and cultural landscapes in areas where future development is likely, in an effort to coordinate planning and preservation goals.

Charlotte-Mecklenburg Historic Landmarks Commission
1225 South Caldwell Street
Charlotte, NC 28203
(704) 376-9115

This Commission for Charlotte and Mecklenburg County is dealing with strong development pressures. It does not hold easements at this time, although it has property acquisition and disposal powers. A nonprofit organization is being established to function in cooperation with the Landmarks Commission. A revolving fund to acquire farmland is being considered.

Private organizations

Historic Preservation Foundation of North Carolina
Box 27644
Raleigh, NC 27611
(919) 832-3652

The Foundation has been concentrating primarily on the built environment. It holds protective covenants on many significant rural and historic landscapes and regularly buys and resells, with restrictions, endangered properties, including farm and plantation complexes.

35. NORTH DAKOTA

SHPO

State Historical Society of North Dakota
612 East Boulevard
Bismarck, ND 58505
(701) 224-2667

This agency manages fifty-five State Historic Sites, which include significant historic landscapes. It is currently working on inventories of cultural resources such as rural, ethnic architecture, German/Russian iron cross cemeteries, and prehistoric burial grounds. The North Dakota Historical Society sponsored a survey of the decorative, Russian/ German, wrought iron funerary crosses. This survey resulted in the listing of 23 properties on the National Register of Historic Places. The State Archives and Historical Research Library are also a division of this agency.

36. OHIO

The Ohio Historical Society has initiated a survey of the historic designed landscapes in the state. Several metro park associations play an important role in landscape conservation and preservation as well. Stan Hywet Hall in Akron, formerly the Seiberling estate, has recently undergone an intensive research and restoration process.

SHPO

Ohio Historical Society
Historic Preservation Office
1982 Velma Avenue
Columbus, OH 43211
(614) 297-2470

The Society has developed the Ohio Historic Landscapes Survey in order to identify and record Ohio's significant designed historic landscapes and work toward developing a greater appreciation of these landscapes in the context of Ohio's cultural heritage. The project was initiated with the National Association for Olmsted Parks and is currently being implemented with assistance from the Ohio Chapter of the ASLA. The Ohio Historical Society also operates a system of state memorials that include sites associated with military history, historic events, or individuals significant in Ohio's history. In 1980, a \$25,000 Historic Preservation Fund grant allowed the Archeological Conservancy to acquire part of the Hopewell Mound Group, dating from 300 B. C. to A.D. 500. In addition to a newsletter, the Society holds conferences and workshops. It occasionally uses interns.

Other state agencies

Department of Administrative Services
State Architect's Office
30 East Broad Street, 35th Floor
Columbus, OH 43266-0403
(614) 466-4761

This office administers state properties, and oversees a number of historic landscapes.

Local governments

Cleveland Metro Parks
4101 Fulton Parkway
Cleveland, OH 44144
(216) 351-6300

This Metro Park district manages about 19,000 acres of park land in four counties. Its primary responsibility is to provide recreational facilities. Much of the landscape preservation focus is on river valleys and stream tributaries, as it tries to establish conservation areas to replicate pre-settlement ecosystems. The agency makes extensive use of interns.

Columbus Metro Parks
Box 29169
Columbus, OH 43229
(614) 891-0700

This park district manages 11,500 acres of park lands in five counties around Columbus. It is working to preserve the central Ohio natural landscape. It is developing a management plan to identify, document, and restore significant areas within its parks.

Private organizations

Ohio Parks and Recreation Association
420 West Whittier Street
Columbus, OH 43215
(614) 443-2322

This membership organization exists principally as an advocacy group and as a resource center. Its mission is to increase leisure opportunities for Ohio citizens. Recently, the Association has collaborated with the local ASLA chapter in Ohio to undertake planning activities.

Northwest Ohio Rural Conservation Committee
c/o Ohio State Preservation Office
Northwest Regional Office
Center for Archival Collections
Bowling Green State University
Jerome Library
Bowling Green, OH 43403
(419) 372-2411

The primary mission of this group is to find ways to encourage rural preservation and conservation projects. In 1990 it held a statewide conference on rural preservation. In 1991 it has a demonstration Barn Rehabilitation Project, like the "Barn Again" National Trust project. The committee plans to recognize particularly innovative rural preservation and conservation efforts by awarding certificates and prizes.

37. OKLAHOMA

SHPO

Oklahoma Historical Society
Wiley Post Historical Building
2100 North Lincoln
Oklahoma City, OK 73105
(405) 521-2491

This SHPO, in cooperation with the Agriculture Department, has a popular three-year-old Centennial Ranch Program containing over 80 heritage ranches and farms. It also administers the Lee Creek Valley, an archeological complex that contains hundreds of prehistoric Cadoen sites and artifacts. It has also worked in association with the Bureau of Land Management to create a 15,000 acre preserve of native prairie and post oak/blackjack oak as a refuge for wild horses in an effort to recreate the historic relationship between plains animals and the land.

38. OREGON

SHPO

Oregon State Parks and Recreation
525 Trade Street, S.E.
Salem, OR 97310
(503) 378-5002

This office has funded a survey to identify significant rural landscape resources in one Oregon county.

Other state agencies

Land Conservation and Development
Commission
1715 Court Street, NE
Salem, OR 97310
(503) 373-0050

The LCDC directs the statewide planning program in Oregon. Its efforts facilitate partnerships between State and local governments to assure comprehensive land use planning.

Local governments

Portland Historical Landmarks Commission
1120 Southwest 5th Street, Room 1002
Portland, OR 97204
(503) 796-7700

The Commission is charged with nominating significant properties and sites, including designed landscapes. Several years ago the commission prepared a study on historic landscapes, and recently it has begun to develop a policy regarding the nomination and protection of historic landscapes. It is

responsible for reviewing modifications to all designated landmarks, including landscapes.

Private organizations

Historic Preservation League of Oregon
P.O. Box 40053
Portland, OR 97240
(503) 243-1923

This statewide preservation organization provides technical assistance through workshops and publications, and serves as a strong advocate for historic and cultural resources in the Oregon land use planning process.

Oregon Trail Coordinating Council
222 Northwest Davis, Suite 309
Portland, OR 97209
(503) 228-7245

The Council is dedicated to the preservation of the section of the Oregon Trail which runs from the Idaho border west to Oregon City. In preparation for the 150th anniversary of the westward migration, the Council is organizing events in every county. It is also developing interpretive markers and kiosks; the first interpretive center at Flagstaff Hill is scheduled for completing in 1992. The group is funded by state grants and private donations.

39. PENNSYLVANIA

Much of the interesting work being done in Pennsylvania today is being carried out by a several local land trusts and conservancies, many of which are patterned after the Brandywine Conservancy.

SHPO

Pennsylvania Historical and Museum Commission
P.O. Box 1026
Harrisburg, PA 17108
(717) 787-2891

The Commission manages approximately sixty historic properties, twenty-five of which are fully interpreted. In addition to providing technical assistance, publications, and workshops, the Commission has an intern program that is generally focused on specific historic sites during the summer months. Commission activities are coordinated with a number of other State agencies, including the Departments of Environmental Resources, Community Affairs, and Agriculture.

Other state agencies

Department of Community Affairs
Bureau of Recreation and Conservation
555 Forum Building
P.O. Box 155
Harrisburg, PA 17120
(717) 783-2638

In 1989, the Department of Community Affairs received an appropriation to create the Pennsylvania Heritage Parks Program. This program was initially coordinated with the

Historical Museum Commission with technical assistance from the NPS. Pennsylvania's Heritage Parks celebrate the industrial history of the state through themes and have five primary goals: economic development, intergovernmental cooperation, cultural conservation, recreation, and education.

Bureau of State Parks
2150 Herr Street
Harrisburg, PA 17103
(717) 787-8800

The Bureau is currently developing a resource management plan for each of the 114 units in the system that includes an inventory of vegetation and man made features. Some parks, especially those around Philadelphia, have individual cultural mission statements --to retain their open space and original farmland character. The Bureau has an extensive internship network, including a program in conjunction with various colleges and universities to offer academic credit.

Bureau of Farmland Protection
Department of Agriculture
2301 North Cameron Street
Harrisburg, PA 17110
(717) 783-3167

This program was established to acquire easements as a method of protecting existing farmland from encroaching development. To accomplish this role, the Bureau reviews applications based on criteria that include commercial viability, scenic beauty, and historic structures. While farm structures and features are covered by the easements, residences are not. This voluntary program is currently operating in about twenty-five counties.

Private organizations

Brandywine Conservancy
P.O. Box 141
Chadds Ford, PA 19317
(215) 459-1900

This venerable organization has two components: (1) the Land Stewardship Program which encourages private landholders to preserve their land; and, (2) the Environmental Management Assistance Program which works with counties and municipalities in writing legislation. While the Conservancy's principal sphere of operations is on the Pennsylvania-Delaware border, it has also done advisory work in a number of other states. The Conservancy has a limited revolving fund, which is used to acquire property as necessary. Much of its efforts are devoted to maintaining open space and encouraging cluster development. A number of internships are available.

Natural Lands Trust
1031 Palmers Mill Road
Media, PA 19063
(215) 353-4487

This private, nonprofit organization was originally intended to serve just as an advisory entity, but it now holds both land in fee and easements. Recently, much of its effort in the Philadelphia area has been devoted to historic landscapes. The Trust, which centers on the greater Philadelphia metropolitan area, also does some consulting elsewhere. It has developed a video on community landscape stewardship, focusing on preserving villages and working farms.



Medicine Wheel National Historic Landmark, Big Horn Mountains, central Wyoming
 Photo courtesy the Wyoming State Historic Preservation Office

Berks County Conservancy
 960 Old Mill Road
 Wyomissing, PA 19610
 (215) 372-4992

This is a very active county land trust, functioning in an area outside Philadelphia where tremendous development pressures exists. The Conservancy is working on both historic preservation and open space conservation of

viewsheds, stream valleys, and National Register historic districts. The new comprehensive plan for Berks County calls for cluster development. The Conservancy also hopes to preserve exceptional farms as historic sites. It collaborates with other organizations to preserve open space, as in the development of a heritage corridor along the Schuylkill River. The Conservancy uses interns in the summer.

Bucks County Conservancy
 85 Old Dublin Pike
 Doylestown, PA 18901
 (215) 345-8966

For thirty years this organization has been trying to maintain agricultural preserves. It has both a land planning department and a historic preservation department. Because Bucks County historic resources are generally farm-related, the county has established an "Agricultural Security Zone," in which farmers are exempted from various restrictions. The Conservancy has established a non-binding Natural Lands Registry, which gives a certificate to owners of listed properties. Bucks County also maintains a register of historic places. The Conservancy, which both owns land and holds easements, also works with other organizations, as in their effort to establish a two-state Delaware River Greenway.

Western Pennsylvania Conservancy
 316 4th Avenue
 Pittsburgh, PA 15222
 (412) 288-2766

The Conservancy is involved in a number of different activities. It owns Fallingwater, the great Frank Lloyd Wright house, where it has been acquiring land to protect the viewshed. There is a farm and woodland program, which encourages young people to become farmers. The Conservancy also helps to establish smaller land trusts. It has a program to rehabilitate historic barns into nature centers in cooperation with the Audubon Society. The Conservancy is also very active within Pittsburgh, working with community gardens, playgrounds, and greenways. It has an extensive intern program.

Fairmount Park Commission
Memorial Hall
Philadelphia, PA 19131
(215) 685-0001

This sixteen-member commission has been in existence since it was established by the Commonwealth of Pennsylvania in 1867. Most of the Philadelphia parks are under its jurisdiction, except for certain athletic facilities operated by the Department of Recreation. An umbrella group, Friends of Philadelphia Parks, which represents 66 affiliated groups, does lobbying and raises private funds. Restoration of the Fairmount Parks Waterworks, for instance, was done with private donations. A master plan adopted five years ago includes a reforestation schedule for the parks, with emphasis on replanting historic species. Another related organization is the Friends of the Schuylkill River.

40. RHODE ISLAND

Rhode Island is extremely fortunate to have commissioned an inventory of its historic designed landscapes by the Rhode Island Historical Preservation Commission. This study, which included an on-site survey of each property, resulted in the development of a context statement about historic designed landscapes -- the types of properties, how they age, the features that survive, and other factors. A subsequent study of vernacular landscapes is now underway. This seminal work (which could be replicated elsewhere) has been invaluable in setting standards for Rhode Island preservation work and developing a comprehensive landscape preservation strategy. Rhode Island has also passed legislation to allow private homeowners State income tax credits for exterior rehabilitation work, including certain landscape features.

SHPO

Rhode Island Historical Preservation
Commission
Old State House
150 Benefit Street
Providence, RI 02903
(401) 277-2678

This SHPO office has an extensive program. Beginning in 1968, the office has surveyed the entire state for historic properties, on a town-by-town basis. It then published a survey report on each town, which is used as the basis for municipal planning. Each municipality must have an historic preservation component to its comprehensive plan, and the zoning must comply with the plan. New zoning categories, such as cluster development, are being encouraged to preserve historic values. This study has been supplemented by the survey of

designed landscapes mentioned above. A study of the vernacular landscapes of Rhode Island is now in progress. The Commission holds historic preservation easements throughout the state and approves state income tax credits for historic preservation projects. The Commission offers work-study programs in conjunction with local colleges and universities.

Other state agencies

Department of Environmental Management
Division of Planning and Development
83 Park Street
Providence, RI 02903
(401) 277-2776

The Department recently completed a scenic landscape inventory. This inventory has been transmitted to all communities doing comprehensive plans, so that these features can be protected by zoning. This survey is also used in evaluating potential acquisitions by the State of Rhode Island, and in grants to local organizations. In addition, it should be of use to the Department of Transportation in analyzing its highways. DEM has also been involved with projects to purchase farmland development rights, which are then held by a State commission. Several years ago it issued "Building at the Shore," an analysis of traditional shoreline development patterns -- and how to maintain them through zoning. Both RIHPC and DEM have been involved with the NPS in creating the Blackstone National Heritage Corridor; both agencies are represented on the Blackstone River Valley National Heritage Corridor Commission. This model corridor is a river valley that runs through both Massachusetts and Rhode Island. The Commission protects historic resources, maintains traditional land use patterns, and is developing a series of educational programs.

Local governments

Newport Office of Planning, Zoning, and Development

City Hall, Broadway
Newport, RI 02840
(401) 846-9600, ext.217

While Rhode Island law enables communities to zone historic landscapes, it does not specifically provide protection for viewsheds. Particular attention is being given to Newport's historic Cliff Walk. There is currently a major cooperative effort under way to restore and manage the Walk. A local committee was formed, with representatives from a number of Federal, State, local and private organizations, to develop a management plan for Cliff Walk. Issues to be dealt with include rebuilding and stabilization, designation, liability (the city has a right-of-way, but individuals still own the land), maintenance, interpretation, and appropriate signs.

Private organizations

Heritage Trust of Rhode Island

199 Hope Street
Providence, RI 02906
(401) 253-2707

This organization, which is chartered by the State, has representatives from all counties. It owns an historically significant landscaped estate and arboretum in addition to three other historic buildings.

Providence Preservation Society

21 Meeting Street
Providence, RI 02903
(401) 831-7440

The focus of this group is educational programs, advocacy, and neighborhood revitalization. It does streetscape improvement projects within National Register districts. The Society's new long-range plan calls for directing their activities to preserve and protect National Register properties in Providence, working on publicity and developing a database on property owners.

Preservation Society of Newport County

118 Mill Street
Newport, RI 02840
(401) 847-1000

The Society owns a number of properties, landscaped estates, and easements. This group works with a number of other organizations in the Newport area. It has an extensive tree maintenance program, as well as a tree replacement program that calls for replacing specimen trees in kind -- to maintain the historic landscape setting. Intern programs generally relate to curatorial projects.

Rhode Island Association for Olmsted Landscapes

624 East Avenue
Pawtucket, RI 02860
(401) 723-3123

The Association maintains a network of landscape architects, historians, and others who are interested in historic landscapes in the state.

41. SOUTH CAROLINA

SHPO

Department of Archives and History

1430 Senate Street
P.O. Box 11669
Columbia, SC 29211
(803) 734-8392

This State Historic Preservation Office provides technical services such as landscape surveying as part of its landscape preservation efforts.

Private organizations

Historic Charleston Foundation

51 Meeting Street
Charleston, SC 29401
(803) 723-1623

The Foundation is dedicated to protecting the historic resources of Charleston and its environs through public advocacy, acquisition of preservation restrictions, and educational programs. It has been involved in historic landscape preservation since it raised the initial funds to save Drayton Hall, now a National Trust property. Historic Charleston holds some 200 easements and covenants on historic properties, including an 800-acre landscape at Mulberry Plantation. It has sponsored historic garden seminars in collaboration with Middleton Place. The organization was instrumental in founding the Lowcountry Open Land Trust, listed below.

Buford Open Land Trust
P.O. Box 75
Buford, SC 29901
(803) 525-1010

This organization is dedicated to the preservation of scenic vistas in Buford County north of the Broad River. They acquire land in fee through purchase or donation and are particularly interested in low country vistas such as marshlands.

Lowcountry Open Land Trust
P.O. Box 1293
Charleston, SC 29402
(803) 577-6510

Although the Lowcountry Open Land Trust's primary goal is to preserve open space and scenic vistas, the Trust is also very active in preserving the rural landscape of South Carolina. It holds nearly 4,000 acres of land protected by easement. The Trust also assists individuals and community groups in the preservation of cultural and natural landscapes.

Historic Columbia Foundation
1601 Richland Street
Columbia, SC 29201
(803) 252-7742

The Foundation operates the Preservation Center, which promotes networking between preservation officials, preservation professionals, and private citizens. It is currently helping the county design conservation easements. Outreach programs include a heritage education video designed to stimulate interest in architecture and cultural geography among third, fifth, and eighth graders.

South Carolina Coastal Conservation League
P.O. Box 1765
Charleston, SC 29402
(803) 723-8035

The Conservation League promotes regional planning and controlled development in cultural and natural landscapes. The group is currently creating a data base to help identify and evaluate the impact of development in Charleston.

42. SOUTH DAKOTA

SHPO

South Dakota State Historical Society
900 Governors Drive
Pierre, SD 57501
(605) 773-3858

The South Dakota Historical Society has conducted surveys of the important ethnic groups that settled in the state. The surveys, including German/Russian and Czech Folk architecture, and the Finnish community, resulted in National Register of Historic Places listings.

Private organizations

Historic South Dakota Foundation
P.O. Box 2998
Rapid City, SD 57709
(605) 341-5820

The Foundation is dedicated to the protection of historic sites and structures important to the history of South Dakota. It provides a revolving loan fund, technical information and assistance, educational programs such as workshops, and holds facade easements on historic buildings. The Foundation also undertakes special projects. One such project is a special permit with the U.S. Forest Service related to the preservation and interpretation of Mystic, a historic mining town.

43. TENNESSEE

The Tennessee chapter of the ASLA is beginning a survey of historic landscapes throughout the state, working in conjunction with State agencies, local organizations, and volunteers. Tennessee has a particularly successful Century Farm Program. The Ladies Hermitage Association is researching the historic landscape and gardens of Andrew Jackson's home.

SHPO

Tennessee Historical Commission
701 Broadway
Nashville, TN 37243
(615) 742-6723

The Historical Commission often addresses landscapes as secondary resources, especially those associated with rural farmsteads and agricultural properties. The office successfully nominated the Memphis Parkway system to the National Register and is currently working on the Norris Parkway.

Other state agencies

Century Farms Program
Middle Tennessee State University
Box 80
Murfreesboro, TN 37132
(615) 898-2947

In the 1970s the Tennessee Department of Agriculture began a survey of centennial farms. In 1985, keeping the original inquiry format, the program began to search for farm structures at least one hundred years old. It has now surveyed all of Tennessee. The next step is to do indepth documentation, in preparation for

the Tennessee Bicentennial in 1996. This work has generated a number of National Register nominations.

Department of Environment and Conservation
701 Broadway
Nashville, TN 37243-0435
(615) 742-6758

This agency manages historic sites throughout Tennessee. In addition, it is working with the Tennessee Trails Association on a pilot program to acquire and preserve Grassy Cove, a 1000-acre rural landscape.

Tennessee Department of Transportation
Suite 900, James K. Polk Building
Nashville, TN 37243-0334
(615) 741-5363

The agency also has jurisdiction over the Memphis Parkway, one of the four original scenic parkways in the nation, dedicated in 1907.

Tennessee Department of Tourism
P.O. Box 23170
Nashville, TN 37202
(615) 741-7994

This agency has received a three-year grant from the National Trust and the National Endowment for the Arts to inventory cultural resources including historic landscapes, as part of a heritage tourism project.

Local governments

Williamson County Planning Commission
1320 West Main Street
Franklin, TN 37064
(615) 790-5725

In 1988, Williamson County, the fastest growing county in the state, passed a Performance Zoning Ordinance, which stipulates that the primary historic and natural character of a community be retained and protected during development.

Private organizations

Historic Rugby, Inc.
Box 8
Rugby, TN 37733
(615) 628-2441

Originally a Utopian colony founded in 1880, this historic village has twenty remaining original buildings. Historic Rugby is developing an innovative preservation plan and design guidelines to retain the integrity of the surrounding rural setting by limiting and controlling the design of future new construction.

Tennessee River Gorge Trust
505 MacLennan Building
721 Broad Street
Chattanooga, TN 37402
(615) 266-0314

This local nonprofit association has formed to acquire land along the Tennessee River, including a 450-acre island containing archeological sites, protecting its banks and viewshed from development.

44. TEXAS

SHPO

Texas Historical Commission
Capitol Station
P.O. Box 12276
Austin, TX 78711
(512) 463-6100

The State Historic Preservation Office designates landscapes as part of National Register nominations. For example, historic courthouse nominations originally noted only the buildings. Today, the entire courthouse square is included in the nomination. The office also has recently nominated two recreational parks (Zilker City Park and Mother Neff State Park) to the National Register. Both are 1930's Civilian Conservation Corps parks, and the office hopes to nominate others. The office manages a few sites with landscapes, and it holds easements on a handful of pre-historic and historic archeological sites.

Other state agencies

The Texas Parks and Wildlife Department
4200 Smith School Road
Austin, TX 78744
(512) 389-4800

The Historic Sites Division owns and manages twenty historic sites and thirty-three recreational parks and is working with the SHPO in designating the remaining CCC parks throughout Texas as landmarks.

Texas Family Land Heritage Program
Texas State Department of Agriculture
Stephen F. Austin Building
P.O. Box 12847
Austin, TX 78711
(512) 463-7673

This popular program with over 2500 designated properties, recognizes families that have owned and operated land in continuous agricultural use (farms, ranches, orchards, etc.) for over 100 years.

State Department of Highways and Public Transportation
125 East 11th Street
Austin, TX 78701-2483
(512) 463-6646

This agency has just published a report on the El Camino Real, the oldest trail in Texas, which originally led from Mexico City to St. Augustine, Florida. The Preservation Plan divides the site into two heritage corridors. There is also interest in a Heritage corridor along the Rio Grande River, from Laredo to Brownsville (Los Cominos de Rio). The office also participates in the National Wildflower Research Center programs.

45. UTAH

SHPO

Utah State Historical Society
300 Rio Grande
Salt Lake City, UT 84101
(801) 533-5755

The SHPO is currently funding three projects that involve historic landscape protection: 1) Eureka, a well-preserved mining town and its surrounding mining landscape; 2) Delta, a 1912 Mormon town with an elaborate irrigation system including dams, canals, weirs, and head gates; and 3) Spring City, which is identifying remaining old fruit trees and shrubs from the pioneer era in order to develop a seed bank of historic plants to enhance the character of the historic district.

Private organizations

Utah Heritage Foundation
355 Quince Street
Salt Lake City, UT 84103
(801) 533-0858

This statewide advocacy group is dedicated to the preservation of Utah's historic and natural resources. It currently holds a scenic easement on a historic farm near Mill Creek Canyon and is dealing with water rights issues and easements.

Bluff City Historic Preservation Association
P.O. Box 76
Bluff, UT 84512
(801) 672-2208

This local group is working to protect this small pioneer town, its surrounding landscape containing various historic and natural resources, and nearby archeological sites.

46. VERMONT

Vermont has taken active steps to preserve the rural heritage that defines its unique character and historic heritage. There are many current programs, as well as programs being developed, that are aimed at the preservation of both rural landscapes and active farms. Shelburne Farm is working to preserve and adapt its historic buildings, landscape and productive farmland for educational purposes and to demonstrate stewardship of natural and agricultural resources. The Countryside Institute, located in Barnard, Vermont, is described in the Regional Organizations.

SHPO

Vermont Division for Historic Preservation
Pavilion Building
58 East State Street
Montpelier, VT 05602
(802) 828-3226

The office manages several State Historic Sites with significant historic landscapes. The office is working on developing regulations that will identify the impact of development on historic landmarks as well as their surroundings. In conjunction with the Historic Preservation Program at the University of Vermont, the office has written and published *Rural Preservation: Shaping Vermont's Future*. The publication is a guide for concerned citizens that explains planning and zoning regulations, Federal assistance programs, and available funding sources.

Other state agencies

Agency of Environmental Conservation
State of Vermont
103 South Main Street
Waterbury, VT 05676
(802) 244-7347

The Agency has a land acquisition program that is particularly effective in rural preservation. In determining what land will be protected, the Agency includes among its priorities significant natural areas, historic places and archeological sites.

Local governments

Mad River Valley Planning District
P.O. Box 471
Waitsfield, VT 05673
(802) 496-7173

The Mad River Planning District, in conjunction with the Vermont Land Trust and the Vermont Division for Historic Preservation, has developed a rural resource protection plan for the Mad River Valley. The plan was developed in an effort to identify, inventory, and preserve those resources that define the rural character of the Valley. It was completed in September 1988.

Private organizations

Preservation Trust of Vermont
104 Church Street
Burlington, VT 05401
(802) 658-6647

This nonprofit organization works with the Vermont Division for Historic Preservation and many individuals, groups and communities to

preserve Vermont's historic heritage. The Preservation Trust also works to preserve properties, (which could include historic landscapes) by providing grants for technical assistance and accepting preservation easements and the donation of land.

Vermont Land Trust
8 Bailey Avenue
Montpelier, VT 05602
(802) 223-5234

This nonprofit organization is dedicated to farmland, open space preservation, and is particularly concerned with preserving productive land. In addition to their work with the Mad River Valley Planning District on the Rural Resource Preservation Program, the Vermont Land Trust is currently working on a legal directory that will be a resource for individuals who are concerned about preserving Vermont's farms and rural character.

47. VIRGINIA

SHPO

Department of Historic Resources
221 Governor Street
Richmond, VA 23219
(804) 786-3143

The Department of Historic Resources holds over 150 easements on historic properties in the Commonwealth. To date, Virginia has registered over 1500 historic properties, which represent some 28,200 contributing resources. Among the registered and inventoried resources are gardens, landscape features, and rural historic districts. The office archives hold information on over 53,000 inventoried sites and structures statewide and are open to the public by appointment. The Department of Historic Resources periodically uses interns and currently has an initiative called the Virginia Historic Easement Program Land Trust to hold easements on urban landscapes.

Other state agencies

Virginia Outdoors Foundation
221 Governor Street
Richmond, VA 23219
(804) 786-5539

The Foundation administers the open space easement program for the State. It was created by the General Assembly in 1966. It provides technical assistance to individual land owners to help in acquiring easements and holds workshops. The Foundation holds 400 easements on over 70,000 acres of land, including several battlefields.

Private organizations

Preservation Alliance of Virginia
P.O. Box 725
Staunton, VA 24401
(804) 979-3899

This statewide umbrella organization has over 155 organizational members. It holds conferences on a variety of topics, and recently sponsored one on rural and historic landscapes. It is concerned with public policy issues and lobbies statewide. The Alliance provides technical assistance advice on development rights, historic districts and zoning legislation.

Virginia Historical Society
P.O. Box 7311
Richmond, VA 23221
(804) 358-4901

Established in 1831, the Virginia Historical Society is the oldest historical society in the South. It is privately funded and houses four centuries of Virginia history including the largest collection of views of 19th and early 20th century Virginia landscapes in paintings, prints, photographs, and extensive maps showing landscape features. It has recently been involved in a study of the landscape of the Shenandoah Valley on the eve of settlement.

Association for the Preservation of Virginia Antiquities
2300 East Grace Street
Richmond, VA 23223
(804) 648-1889

This nonprofit organization manages more than thirty-two historic properties such as Bacon's Castle, the site of a recently restored 17th century garden. The Association publishes a

newsletter and a scholarly journal, and utilizes interns.

Piedmont Environmental Council
28 Main Street
P.O. Box 460
Warrenton, VA 22186
(703) 347-2334

This membership organization was founded in 1972 to protect the rural landscape west of the Fredericksburg urban corridor and east of the Shenandoah National Park. It publishes a newsletter and brochures on land protection. It operates primarily as an intermediary for State easement programs, both locating land and working with landowners on protection plans. The staff work on designating rural historic districts. It also has an active education program including day camps for children, teacher training, community workshops on land protection, stream monitoring, and a tree designation program.

Waterford Foundation
P.O. Box 142
Waterford, VA 22190
(703) 882-3018

This rural historic district, a National Historic Landmark, encompasses an entire village and surrounding agricultural land. The Foundation is working with local property owners to limit new construction to low visibility areas. In addition, Waterford is researching early Afro-American history and has a living history project in the Virginia schools. The National Trust houses its outreach program, the National Center for Heritage Education at Waterford.

Lower James River Association
P.O. Box 110
Richmond, VA 23201
(804) 730-2898

This private nonprofit group founded in 1976 addresses land use as well as water quality issues. It has undertaken a Heritage Corridor study of the lower James River in conjunction with the Scenic Byways Program to consider watershed, environmental, and developmental issues. The Association occasionally uses interns for specific projects.

**The Garden Club of Virginia
Restoration Committee**
Route 4, Box 193 G
Lynchburg, VA 24503

The Garden Club of Virginia has forty-five chapters throughout the state, which annually open private homes and gardens to the public in order to raise money for the restoration of outstanding historic gardens. A book on the restorations supported by the GCV will be published next year. The Garden Club also has a large slide collection of individual projects.

Friends of the Rappahannock
108 Wolfe Street
Fredericksburg, VA 22401
(703) 373-3448

This five-year-old conservation group provides technical assistance, holds conferences and runs educational river trips that are open to the public to encourage citizen involvement in land use issues. It is working with the local canal groups to preserve the lock and canal system along the Rappahannock River. In cooperation with the Preservation Program at Mary Washington College, the group has received a

grant to identify historic resources that would be endangered by future water projects.

Virginia Canals and Navigation Association
35 Towana Road
Richmond, VA 23226
(804) 288-1334

This membership group works with local groups to survey, map and preserve canal history and sites and create historic districts along rivers. It is currently preparing a series of site inventories in an atlas form for rivers with navigational canals, including the Appomattox, James, and Rivanna rivers.

48. WASHINGTON

There is a very strong interest in Olmsted landscapes in Washington. Based in Seattle, the Friends of Olmsted Parks is an active group that is working on designating the parks and greenways designed by the Olmsted firm.

SHPO

Office of Archeology and Historic Preservation
111 West 21st Avenue
KL-11
Olympia, WA 98504
(206) 753-4011

The SHPO is beginning to identify and designate historic landscapes. It has inventoried cultural resources in communities, including several Olmsted designed parks in the state. The Washington Office of Archeology and Historic Preservation has also worked in cooperation with the Makah tribe to document traditional cultural properties, such as food gathering sites and traditionally spiritual places. The Makah use this survey to interpret their heritage.

Local governments

Seattle Department of Parks and Recreation
210 Municipal Building
Seattle, WA 98109
(206) 684-4075

The Department of Parks and Recreation maintains a system of city parks that were designed by the Olmsted firm, and is preparing National Register nominations for the parks.

Private organizations

Washington Trust for Historic Preservation
204 1st Avenue South
Seattle, WA 98104
(206) 624-7880

This is the statewide nonprofit preservation organization for the state of Washington. It deals with all aspects of heritage resources through an annual preservation conference, technical assistance, and a quarterly newsletter. The Trust is developing educational programs.

Friends of Seattle's Olmsted Parks
P.O. Box 15984
Seattle, WA. 98115
(206) 448-6506

This organization serves as an advocate for Seattle's Olmsted parks and sponsors lectures, tours, and special events.

49. WEST VIRGINIA

SHPO

Department of Culture and History
Capitol Complex
Charleston, WV 25305
(304) 348-0220

This office is beginning a survey of outdoor sculpture. It has prepared a number of National Register nominations which address historic landscapes. They include the Ritter Park Historic District in Huntington and sections of Ogleby Park in the Wheeler Park System. The office has also assisted the NPS with the inventory and documentation of the scenic landscape of the New River Gorge.

Other state agencies

Department of Natural Resources
Division of Tourism and Parks
190 Kanawah Blvd. East/ Building 6, Room B451
Charleston, WV 25305
(800) 225-5982

The Division of Tourism and Parks operates nine historical parks where preservation, interpretation, and education are important.

Private organizations

Preservation Alliance of West Virginia
1500 Chapline Street
Wheeling, WV 26003
(304) 234-3701

The Alliance is a nonprofit statewide advocacy organization.

50. WISCONSIN

SHPO

State Historical Society of Wisconsin
816 State Street
Madison, WI 53706
(608) 264-6500

The Society, in addition to serving as the SHPO, administers a number of historic sites with landscape components. It has produced several publications, and has an internship program.

Other state agencies

Department of Natural Resources
101 South Webster Street
P.O. Box 7921
Madison, WI 53707
(608) 266-2621

The DNR administers Wisconsin's state parks.

Department of Development
Division of Economic and Community
Development
123 West Washington Avenue
P.O. Box 7979
Madison, WI 53707
(608) 266-9467

This agency administers the Main Street Program.

Private organizations

Wisconsin Trust for Historic Preservation
P.O. Box 825
Merrill, WI 54452
(715) 536-6220

The Trust conducts annual preservation workshops with a landscape component. In addition to a newsletter, it is about to publish a statewide manual of historic preservation resources. The Trust's efforts focus largely on rural preservation. It works closely with local groups such as the Fox River Heritage Corridor group, the Wisconsin Ethnic Settlement Trails project, and a group in southeastern Wisconsin that is concerned with preserving the context and settings of Frank Lloyd Wright buildings.

The Clearing Institute
P.O. Box 65
Ellison Bay, WI 54210
(414) 854-4088

The Clearing was founded by the landscape architect Jens Jensen, as a school for landscape design. Seminars that focus on landscape preservation issues are held here every other year. The Clearing also offers week-long courses in the summer, many of which relate to Jensen's work and philosophy.

51. WYOMING

Wyoming has some of the best preserved remnants of the historic settlement trails of the frontier: the Oregon, California, Mormon, Overland and Pony Express Trails all cross the State.

SHPO

Wyoming State Archives
Museums and Historical Department
Cheyenne, WY 82002
(307) 777-6301

The Wyoming SHPO is actively documenting historic ranches to nominate them to the National Register. This includes evaluating their vernacular architecture and associated cultural landscape. Several county CLOs are participating in the inventory. The office has a Native American liaison and is working with Native American coalitions to protect the Medicine Wheel National Historic Landmark, overlooking the Big Horn Valley.

Other state agencies

Department of Commerce
1825 Cary Avenue
Cheyenne, WY 82002
(307) 777-7697

This office supplies technical assistance as requested. It is currently assisting with master plans for the state parks, many of which include landscape components. It is also working to restore the 1910 grounds of the Kendrick Mansion near Sheridan, as well as frontier gardens at several historic forts.

CHAPTER 3

Educational Programs



Cow and horse barn, Morrill Homestead, Strafford, Vermont

Photo by Tom Keefe, VT Division for Historic Preservation, NPS files

Individuals currently working in the field of historic landscape preservation often come from one of two fields. They may receive their training in landscape architecture, with academic or professional experience in historic preservation. Or, they may be educated in historic preservation generally, with a special interest in landscape issues. Other disciplines, such as architectural history, natural resources, and cultural geography all provide a valuable introduction to some of the issues in historic landscape preservation.

Those who are interested in pursuing additional education or training in landscape preservation have a number of options, depending on one's specific goal or objective. Several colleges and universities offer Bachelor's (BLA) or Master's (MLA) degrees in landscape architecture. These programs are listed below. Most landscape architecture programs require all students to take a history of landscape architecture course, but not all have additional courses that address the issue of landscape preservation since their focus is training professional landscape architects. The programs vary considerably and some offer independent study, coordination with other departments, or faculty with specific preservation interest or expertise. The programs listed below are annotated if they offer additional courses, programs, or concentrations in historic landscape preservation. Programs are also annotated if they have faculty who are active in historic landscape preservation. Combined degree programs in historic preservation and landscape architecture are also included.

Another option is to pursue a degree program in historic preservation. Traditionally, many of these programs have emphasized architectural history. However, several now address landscape preservation through courses that cover rural landscape or historic districts issues or through collaborative programs with landscape architecture departments. As such, these special programs are annotated. Most of the preservation programs listed below offer Master's degrees.

Colleges and universities that have degree programs in both landscape architecture and historic preservation are noted with an asterisk. Since faculty and curricula change, we suggest that individuals interested in pursuing course work or a concentration in historic landscape preservation contact the college or university for more information.

The third avenue for additional education is simply enrolling in courses through continuing education programs. Unlike the programs described above, this may not require undertaking a costly and time-consuming degree program. However, the academic rigor of these courses may be somewhat limited. A small sample of programs are listed below. Many are found at arboreta, botanic gardens, historic house museums, as well as through colleges and universities. The American Association of Botanical Gardens and Arboreta (AABGA) has a complete list of their institutional members. Many offer lecture series or regular courses.

Finally, conferences and workshops held throughout the country offer lectures which may provide insight into current preservation practice and issues in landscape preservation. These include the annual meetings of the American Society of Landscape Architects, the Alliance for Historic Landscape Preservation, the National Trust for Historic Preservation, and the Association for Preservation Technology. Other organizations such

as state and local historical societies, garden clubs, and historic properties offer local or regionally focused workshops. Organizations which provide these workshops are not listed here, but many of the annotations in Chapter 1 mention conferences offered by the organizations.

1. Landscape Architecture Programs

ALABAMA

Auburn University
BLA Program
Landscape Architecture Program
104 Dudley Hall
Auburn University
Auburn, AL 36879-5316
(205) 844-4516

The Auburn BLA program offers a seminar in historic landscape preservation. Design studios emphasize issues related to cultural landscapes and historic designed landscapes in Alabama the southeastern U.S.

ARIZONA

University of Arizona
BLA Program
Landscape Architecture Program
School of Renewable Natural Resources
University of Arizona
325 Biological Sciences East Building
Tucson, AZ 85721
(602) 621-1004

ARKANSAS

University of Arkansas
BLA Program
Landscape Architecture Program
School of Architecture
University of Arkansas
108 Vol Walker Hall
Fayetteville, AR 72701
(501) 575-4705

This BLA program focuses on landscape preservation in some of its course work. There is one faculty member in particular who has a strong interest in landscape preservation.

CALIFORNIA

California Polytechnic State University
BSLA Program
Department of Landscape Architecture
School of Architecture and Environmental Design
California Polytechnic State University
San Luis Obispo, CA 93407
(805) 756-1319

California State Polytechnic University
BSLA Program
MLA Program
Department of Landscape Architecture
School of Environmental Design
California State Polytechnic University
3801 West Temple Avenue
Pomona, CA 91768
(714) 869-2684

University of California at Berkeley
MLA Program
Department of Landscape Architecture
College of Environmental Design
University of California at Berkeley
202 Wurster Hall
Berkeley, CA 94720
(415) 642-4022

This program offers its students three degree options: Landscape Design and Site Planning, Urban and Community Design, and Environmental Planning. Within the Environmental Planning option, students are introduced to management of natural resources as well as protection of fragile areas.

University of California at Davis
BSLA Program
Landscape Architecture Program
Department of Environmental Design
College of Agricultural and Environmental Sciences
University of California at Davis
Davis, CA 95616
(916) 752-6223

COLORADO

Colorado State University
BSLA Program
Department of Recreation Resources and Landscape Architecture
College of Forestry
Colorado State University
Fort Collins, CO 80523
(303) 556-4090

University of Colorado at Denver
MLA Program
Landscape Architecture Program
School of Architecture and Planning
University of Colorado at Denver
1200 Larimer Street, Box 126
Denver, CO 80204-5300
(303) 556-4090

FLORIDA

University of Florida
BLA Program
Department of Landscape Architecture
College of Architecture
University of Florida
331 Architecture Building
Gainesville, FL 32611
(904) 392-6098

Landscape preservation is addressed in the BLA program at the University of Florida. An internship is required.

GEORGIA

*University of Georgia
BLA Program
MLA Program
Department of Landscape Architecture
School of Environmental Design
University of Georgia
609 Caldwell Hall
Athens, GA 30602
(404) 542-1816

This program has a strong emphasis in landscape preservation, due in part to the interest and expertise of individual faculty who regularly collaborate with the NPS. The students produce an annual publication called "Georgia Landscapes."

IDAHO

University of Idaho
BLA Program
Landscape Architecture Department
College of Art and Architecture
University of Idaho
Moscow, ID 83843
(208) 885-6272

The University of Idaho program offers a design studio course that incorporates a preservation project.

ILLINOIS

University of Illinois
BLA Program
MLA Program
Department of Landscape Architecture
College of Fine and Applied Arts
University of Illinois
214 Mumford Hall, 1301 West Gregory Drive
Urbana, IL 61801
(217) 333-0176

The University of Illinois has also done work on preserving cultural landscapes in India with the National Park Service. It will continue to work on preservation related projects with a concentration on international sites.

INDIANA

*Ball State University
BLA Program
MLA Program
Department of Landscape Architecture
College of Architecture and Planning
Ball State University
Muncie, IN 47306
(317) 285-1971

Ball State offers a concentration in Historic Landscape Preservation in their MLA program. Courses offered deal with historic preservation documentation and National Park Service policies. There is also a studio each year that addresses historic preservation issues as well as site design and landscape planning. This studio runs concurrently with a lecture series. Students are required to submit either a thesis or design project to complete their degrees.

Purdue University
BSLA Program
Landscape Architecture Program
Department of Horticulture
College of Agriculture
Purdue University
Horticulture Building
West Lafayette, IN 47907
(317) 494-1326

IOWA

Iowa State University
BLA Program
Department of Landscape Architecture
Iowa State University
College of Design, Room 146
Ames, IA 50011
(515) 294-5676

There is one professor on the faculty at Iowa State who is very active in historic preservation. One course offered, Research Methods and Techniques in historic preservation, covers topics ranging from research to maintenance of historic properties.

KANSAS

Kansas State University
BLA Program
MLA Program
Department of Landscape Architecture
College of Architecture and Design
215 Seaton Hall
Kansas State University
Manhattan, KS 66506
(913) 532-5961

Landscape preservation is covered in a few courses, and the program has adapted to facilitate individual interests in historic landscapes.

KENTUCKY

University of Kentucky
BLA Program
Department of Horticulture and Landscape
Architecture
University of Kentucky
Agriculture Science Center North
Lexington, KY 40546
(606) 257-3485

The course "Historic Landscape Preservation" is offered to upper level undergraduates and all graduate students. It covers philosophical issues, case studies, and includes site visits, and individual student projects (e.g. documenting a historic garden).

LOUISIANA

Louisiana State University
BLA Program
MLA Program
School of Landscape Architecture
Louisiana State University
College of Design Building
Baton Rouge, LA 70803-7020
(504) 388-1434

There is one faculty member with a strong interest in landscape preservation. Louisiana State offers a graduate seminar course in historic landscape preservation each semester. The topic is also addressed in a number of the history and geography courses that are offered in the program.

MASSACHUSETTS

Harvard University
MLA Program
Department of Landscape Architecture
Harvard Graduate School of Design
Harvard University
409 Chand Hall, 48 Quincy Street
Cambridge, MA 02138
(617) 495-2573

Harvard offers several history courses including the history of the North American built environment. Historic properties are occasionally used for design studio projects. Students may cross-register with MIT and the Radcliff Seminars program.

University of Massachusetts
BSLA Program
MLA Program
Department of Landscape Architecture and
Regional Planning
University of Massachusetts
Hills North 109
Amherst, MA 01003
(413) 545-2255

Both programs at the University of Massachusetts address landscape preservation issues. Studios offered in both undergraduate and graduate programs are dedicated to historic landscape preservation. Two faculty members are actively interested in all aspects of landscape preservation.

MICHIGAN

*Michigan State University
BLA Program
Landscape Architecture Program
Department of Geography
Michigan State University
East Lansing, MI 48824-1221
(517) 353-7880

University of Michigan
MLA Program
Landscape Architecture
School of Natural Resources
University of Michigan
Dana Building, Room 1548
Ann Arbor, MI 48109-1115
(313) 763-9214

The University of Michigan has one faculty member with research interest in landscape history.

MINNESOTA

University of Minnesota
BLA Program
MLA Program
Department of Landscape Architecture
College of Architecture and Landscape Architecture
University of Minnesota
205 North Hall, 2005 Buford Circle
St. Paul, MN 55108
(612) 625-8285

MISSISSIPPI

Mississippi State University
BLA Program
Department of Landscape Architecture
College of Agriculture and Home Economics
Mississippi State University
P.O. Drawer MQ
Montgomery Hall, Room 100
Mississippi State, MS 39762
(601) 325-3012

NEW JERSEY

Rutgers-The State University of New Jersey
BSLA Program
Department of Landscape Architecture
Rutgers-The State University of New Jersey
Blake Hall
Cook College, Box 231
New Brunswick, NJ 08903
(201) 932-9317

NEW YORK

City College of New York
BSLA Program
Urban Landscape Architecture Program
School of Architecture and Environmental Studies
City College of New York
138th Street and Convent Avenue
New York, NY 10031
(212) 650-8732

*Cornell University
BLA Program
MLA Program
Landscape Architecture Program
Cornell University
230 East Roberts Hall
Ithaca, NY 14853
(607) 255-4487

Cornell University has two faculty members who are very active in historic landscape preservation. Both undergraduate and graduate programs offer studios that focus on preservation issues. In addition, the graduate program includes a preservation seminar.

State University of New York
BLA Program
MLA Program
College of Environmental Science and Forestry
State University of New York
Syracuse, NY 13210
(315) 470-6541

The State University of New York landscape architecture program has several professors that are very active in historic landscape preservation. This has led to a strong concentration of thesis and research work in the graduate program. The program is currently pursuing a cooperative agreement with the NPS that will allow students to work on cultural landscape projects for National Parks in the Northeast.

NORTH CAROLINA

North Carolina State University
MLA Program
Landscape Architecture Department
School of Design
North Carolina State University
P.O. Box 7701
Raleigh, NC 27695-7701
(919) 737-2206

There is one faculty member who teaches a series of courses with a concentration on landscape preservation.

OHIO

Ohio State University
BSLA Program
MLA Program
Department of Landscape Architecture
School of Architecture
Ohio State University
136B Brown Hall, 190 West 17th Avenue
Columbus, OH 43210
(614) 292-8263

OREGON

*University of Oregon
BLA Program
Department of Landscape Architecture
School of Architecture and Allied Arts
University of Oregon
216 Lawrence Hall
Eugene, OR 97403
(503) 686-3634

This is one of the only schools in the country in which preservation ethics are taught. The Masters program offers concentrations in landscape history and theory.

PENNSYLVANIA

*University of Pennsylvania
MLA Program in Landscape Architecture
Department of Landscape Architecture and
Regional Planning
Graduate School of Fine Arts
University of Pennsylvania
119 Graduate School
Philadelphia, PA 19104
(215) 898-6591

The University of Pennsylvania offers both a MS degree in Historic Preservation and a MLA degree in Landscape Architecture and Regional Planning. The students within the MLA program may also earn a certificate in historic preservation. The students may enroll in a joint degree program in historic preservation and landscape architecture. This is one of the few universities which offers both historic preservation and landscape architecture. They have a summer program in cooperation with ICCROM.

Pennsylvania State University
BSLA Program
Department of Landscape Architecture
College of Arts and Architecture
Pennsylvania State University
210 Engineering Unit D
University Park, PA 16802
(814) 865-9511

RHODE ISLAND

Rhode Island School of Design
BLA Program
MLA Program
Department of Landscape Architecture
Division of Architectural Studies
Rhode Island School of Design
2 College Street
Providence, RI 02903
(401) 331-3511

TEXAS

Texas A&M University
BLA Program
MLA Program
Department of Landscape Architecture
College of Architecture and Environmental Design
Texas A&M University
321 Langford Architecture Center
College Station, TX 77843-3137
(409) 845-1019

Within the school of Landscape Architecture, landscape preservation is addressed in a number of courses. A center for historic resources/historic preservation is located on campus.

Texas Tech University
BLA Program
Department of Park Administration and Landscape Architecture
College of Agricultural Sciences
Texas Tech University
P.O. Box 4169
Lubbock, TX 79409
(806) 742-2858

Landscape preservation is addressed in the whole program and there are a number of

students with an interest in preservation. The program and its faculty members recognize the importance of historic preservation.

UTAH

Utah State University
BLA Program
MLA Program
Department of Landscape Architecture and
Environmental Planning
College of Humanities, Arts and Social Sciences
Utah State University
Logan, UT 84322-4005
(801) 750-3471

Landscape preservation is addressed in the landscape architecture programs at Utah State. There are specialized programs at the graduate level including land rehabilitation and preservation. This program offers the students a balanced curriculum in landscape policy, human ecology, and design techniques

VIRGINIA

Virginia Polytechnic Institute & State University
BLA Program
MLA Program
Landscape Architecture Department
College of Architecture and Urban Studies
Virginia Polytechnic Institute and State University
202 Architecture Annex
Blacksburg, VA 24061
(703) 231-5506

***University of Virginia**
MLA Program
Department of Landscape Architecture
School of Architecture
University of Virginia
Campbell Hall
Charlottesville, VA 22903
(803) 924-3957

A graduate student at the University of Virginia may either taking courses which discuss preservation issues or obtain a preservation certificate within the landscape architecture department. Courses offered include a two-semester historic sites course and two landscape history Courses that deal specifically with preservation issues.

WASHINGTON

Washington State University
BSLA Program
Department of Horticulture and Landscape Architecture
College of Agriculture and Home Economics
Washington State University
Johnson Hall 149
Pullman, WA 99164-6414
(509) 335-9502

University of Washington
BLA Program
MLA Program
Department of Landscape Architecture
College of Architecture and Urban Planning
University of Washington
348 Gould Hall, JO-34
Seattle, WA 98105
(206) 543-9240

There is one faculty member who teaches numerous courses in landscape history; two

courses address selective aspects of historic landscape preservation.

WEST VIRGINIA

West Virginia University
BSLA Program
P.O. Box 6009
Morgantown, WV 26506-6009
(304) 293-2141

WISCONSIN

University of Wisconsin
BLA Program
Department of Landscape Architecture
School of Natural Resources
College of Agricultural and Life Sciences
25 Agriculture Hall
1450 Linden Drive
Madison, WI 53706
(608) 263-7300

The entire landscape architecture program at Wisconsin concentrates on historic preservation issues.

2. Historic Preservation Programs

DISTRICT OF COLUMBIA

George Washington University
MA Program in Historic Preservation
American Studies Department-Historic Preservation Program
George Washington University
Washington, DC 20052
(202) 994-6070

This MA program provides a degree in American Civilization with an emphasis in historic preservation.

GEORGIA

Georgia State University
MA in Heritage Preservation
Department of History
Georgia State University
Atlanta, GA 30303
(404) 651-3255

The basic focus of the program is to prepare the students to do administration work in a variety of areas in historic preservation. One course is offered which deals with landscape preservation issues - "History of the American Landscape and Garden." Landscape preservation issues are also introduced in the introductory course.

Savannah College of Art & Design
MFA in Historic Preservation
School of Building Arts
729 Martin Luther King Jr. Blvd.
Savannah, GA 31401
(912) 238-2409

***University of Georgia**
Masters in Historic Preservation
Athens Georgia 30602
(404) 542-1816

See Landscape Architecture section.

INDIANA

***Ball State University**
MS in Historic Preservation
Department of Architecture
Historic Preservation Program
Muncie, IN 47306
(317) 285-1971

Ball State has an intensive program with a large number of courses that deal with landscape preservation issues. The program integrates the architecture, landscape architecture and urban planning departments. A thesis is required to complete this program.

MARYLAND

Goucher College
BA Historic Preservation
Historic Studies Department
Goucher College
Dulany Valley Road
Baltimore, MD 21204
(301) 337-6000

MASSACHUSETTS

Boston University
MA Historic Preservation Studies
Preservation Studies Program
Boston University
226 Bay State Road
Boston, MA 02215
(617) 353-2948

This program offers one course, "Introduction to Landscape Preservation." The students may also pursue independent study in landscape preservation.

MICHIGAN

Eastern Michigan University
MS Historic Preservation
Department of Geography
Historic Preservation Program
Eastern Michigan University
Ypsilanti, MI 48197-2260
(313) 487-0232

This program focuses on historic preservation planning, administration and interpretation. There are two courses with a strong landscape preservation focus. The program combines the departments of geography, history, art and political science and offers three concentrations: Historic Preservation Planning, Historical Administration, Heritage Interpretation, and Cultural Tourism.

***Michigan State University**
BA in Art History with Specialization in Preservation
Department of Art
Michigan State University
East Lansing, MI 48824-1221

An undergraduate specialization in Historic Preservation in the Department of Art is available as an elective for students majoring in the History of Art. Landscape preservation issues are touched upon in a few courses.

MISSOURI

South East Missouri State University
BS in Historic Preservation
Department of History
Historic Preservation Program
South East Missouri State University
University Plaza
Cape Girardeau, MO 63701
(314) 651-2808

There are three main areas of study within this program: museum and site administration, restoration, and archival management. In the site administration area students are required to read information on preserving both the structures and their surroundings. There is also a focus on American cultural landscapes. All students are required to complete a summer internship.

NEW YORK

Columbia University
MS in Historic Preservation
Graduate School of Architecture and Planning
Division of Historic Preservation
Columbia University
400 Avery Hall
New York, New York 10027
(212) 854-3414

Four areas of concentration are offered by this program: architectural and landscape design, history, building and landscape conservation, and preservation planning. The core curriculum is comprised of courses from each area and the theory and practice of preservation. This ensures the learning of a common language and facilitates later professional cooperation and understanding.

*Cornell University
MA, PhD in Historic Preservation
440 Kennedy Hall
Ithaca, NY 14853-5903
(607) 255-4487

This program offers the unique opportunity to get an independent preservation degree that is combined with the design and planning components from the landscape architecture program. Only a few programs in the country offer this option.

OREGON

*University of Oregon
MS in Historic Preservation
School of Architecture and Allied Arts
University of Oregon
216 Lawrence Hall
Eugene, OR 97403
(503) 686-3634

PENNSYLVANIA

*University of Pennsylvania
MS Program in Historic Preservation
University of Pennsylvania
119 Graduate School
Philadelphia, PA 19104
(215) 898-6591

University of Pennsylvania offers both a MS degree in Historic Preservation and a MLA degree in Landscape Architecture and Regional Planning. The students within the MLA program may also earn a certificate in Historic Preservation. Areas of concentration in Historic Preservation are: Building Preservation, Landscape Preservation, Preservation Planning, History and Documentation, Conservation and Museum and Site Management. Internships are required.

RHODE ISLAND

Roger Williams College
BA or BS in Historic Preservation
School of Architecture
American Studies Department
Roger Williams College
Ferry Road
Bristol, Rhode Island 0289-2923
(401) 253-1040 Ext.3005

Students may either choose to major or minor in historic preservation. The program offers a course in rural preservation and historic landscape preservation.

TENNESSEE

Middle Tennessee State University
BA, BS, MA, DA in Historic Preservation
Center for Historic Preservation
Vaughn House
P.O. Box 80
Murfreesboro, TN 37132
(615) 898-2544

VERMONT

University of Vermont
MS in Historic Preservation
Department of History
Historic Preservation Program
University of Vermont
Wheeler House
Burlington, VT 05401-3596
(802) 656-3180

VIRGINIA

Mary Washington College
BA Historic Preservation
Center for Historic Preservation
Mary Washington College
1301 College Avenue
Fredericksburg, VA 22401-5358
(703) 899-4037

Two courses addressing landscape preservation issues are offered at Mary Washington. The department works in cooperation with other departments (geography, history) and offers a well-rounded education that trains students to participate in preservation administration programs.

3. Continuing Education

The following list is a small sample of continuing education programs or annual lecture courses which offer curricula applicable to historic landscapes and preservation practice.

The Arnold Arboretum of Harvard University
125 Arborway
Jamaica Plain, MA 02130
(617) 524-1718

Many programs are offered at Arnold Arboretum through courses, workshops, lectures, special events and exhibitions. The Arnold Arboretum offers a general certificate program in Gardening Arts and Techniques, certificates in Flower Arrangement in the Americas, Plant Propagation and Horticultural Maintenance. The Arboretum does offer courses and field trips with landscape preservation themes periodically.

Brooklyn Botanic Gardens
1000 Washington Avenue
Brooklyn, NY 11225
(718) 622-4433

The Brooklyn Botanical Gardens offers Adult Education courses.

University of California at Berkeley
Department of University Extension
Berkeley, CA 94720
(415) 642-0832

Through the University Extension Department a certificate is awarded in landscape architecture. This is a pre-professional program of study lasting two or three years and is available on a part time basis. The

Extension Department also offers training and instruction for landscape architects who wish to develop new skills or enhance and update current skills and knowledge about environmental design topics.

Chicago Botanic Garden
P.O. Box 400
Glencoe, IL 60022-0400
(708) 835-5440

The Chicago Botanic Garden offers seminars and workshops for professionals.

The George Washington University
Landscape Design Program
801 22nd Street, NW
Suite T-409
Washington, DC 20052
(202) 994-8069

A certificate in Landscape Design is offered at George Washington in their continuing education department. The program is a two-year program in which students must take four prerequisite course before beginning their studies. There are two landscape preservation courses offered: Introduction to Historic Landscapes and Issues in Historic Landscape Preservation.

The University of Georgia
Department of Landscape Architecture
School of Environmental Design
University of Georgia
609 Caldwell Hall
Athens, GA 30602
(404) 542-1816

A certificate program is available to anyone involved in a Master's program within the

University of Georgia. It is a 30-hour program offered through the historic preservation department.

The New York Botanical Garden
Bronx, NY 10458-6504
(212) 220-8700

There are two certificate programs offered at the New York Botanical Garden: the Basic Landscape Design Certificate and the Advanced Landscape Design Certificate.

University of Washington
Center for Urban Horticulture
University of Washington, GF-15
Seattle, WA 206-543-8800
(206) 543-8616

The Center for Urban Horticulture offers a non-credit certificate program. There are six topics in which one may receive a certificate: Plant Science, Woody Plant Materials, Woody Plant Management, Herbaceous Plants, Pest Management, Urban Wildlife, Ecology, and Design. Preservation issues are addressed within the design program.

Longwood Graduate Program
153 Townsend Hall
University of Delaware
Newark, DE 19717-1303
(302) 292-3651

Longwood Gardens sponsors a joint master's degree program with the University of Delaware in public horticulture administration. Within the program is a course on historic properties which covers administration and interpretation of historical properties, including historic site surveys and preservation research. Longwood Gardens also offers continuing education programs in the Spring and Fall. These are mainly courses offered in four and six session classes.

The Radcliffe Seminars
Cronkite Graduate Center
6 Ash Street
Cambridge, MA 02138
(617) 495-8600

The Radcliffe Seminars offers a Certificate in Landscape Design. To complete the certificate program, students must complete twelve courses and submit an independent study. Courses are set up in two ways: each full course is worth four credits and each module is worth two credits. Two modules are offered in preservation: concepts and documentation, and application. All courses are graduate level courses.

CHAPTER 4

Resources for Historic Landscape Research



*Volunteer Park, Seattle, Washington under construction
1909*
Photo by J.C. Olmsted, courtesy the Olmsted National
Historic Site, NPS

Landscape research may require the use of a broad range of source materials, depending on the subject and research objective. Detailed plans, specifications, and records exist for a very limited number of historic landscapes and individual landscape architects. As a result, one must often sift through personal correspondence, period photographs, agricultural or household records, or architectural drawings in order to find primary sources on the landscape or landscape architect. In addition, secondary source material such as popular journals or period texts may provide useful and often critical information.

This section is intended to provide readers with some basic information that will aid in historic landscape research. Included here is a sampling of libraries and archives which contain notable collections, either the records of significant individuals or libraries with particularly complete collections of books and journals that relate to historic landscapes in the U.S. or American historic preservation in general. This is a necessarily incomplete and selective list, assembled to indicate the geographic distribution of institutions where landscape records can be found. For a more complete listing, please contact the Catalog of Landscape Records in the U.S. at Wave Hill (the annotation is listed under computerized directories below).

The personal papers of individual landscape architects or the design and construction records for specific properties may be found in a variety of

locations throughout the country, from local historical societies to small museums and the libraries of large universities. Since finding this information is an arduous task, we suggest that researchers interested in specific individuals or properties contact Wave Hill. A query of its database will direct researchers to the appropriate repository.

Much of the current published information on historic landscapes, including landscape preservation practice is found in professional journals. Occasionally, journals such as the *APT Bulletin* offer special issues devoted to historic landscape preservation. It is more likely that individual articles may appear from time to time in any number of the published journals, from *Landscape Architecture Magazine* to the *Journal of Cultural Geography*. Most of the publications described here may be found in university or city libraries. Generally, all are American publications except *Garden History* which is published in the United Kingdom. Also listed are historic periodicals that provide excellent sources of primary and secondary information on late 19th-early 20th century landscapes. Illustrated periodicals are especially rich sources of information on historic gardens.

1. Libraries and Archives

**American Society of Landscape Architects
Resource Center**
4401 Connecticut Avenue, NW
Washington, DC 20008-2302
(202) 686-2752

The ASLA Resource Library has back issues of *Landscape Architecture* and a small landscape architecture library. Use of the library is limited to ASLA members.

The Athenaeum of Philadelphia
219 South 6th Street
Philadelphia, PA 19106
(215) 925-2688

Philadelphia architecture between 1820-1940 is the special subject area of this collection. One can find many landscape drawings, records, and photographs here, intermingled with the architectural collection. The library also contains important books and periodicals on the subject of landscape architecture.

California Polytechnic State University
Robert F. Kennedy Library
San Luis Obispo, CA 93407
(805) 756-2305

This library hold the surviving documents of Julia Morgan (1872-1957). It is comprised of two collections. The first contains some 9,000 blueprints and drawings from San Simeon. The second collection contains business records, organized by client name and geographic location. It contains 3,000 blueprints and drawings. Inhouse finding aids exist for both of these collections.

Columbia University
Avery Art and Architecture Library
Avery Hall
New York, NY 10027
(212) 854-3501

Avery Library is one of the largest architectural history collections in the United States and also contains a substantial amount of landscape architecture material. The library has an extensive collection of 19th and 20th century park reports, rare books, historic photographs and old periodicals which are easily accessible.

Chicago Park District
Archivist/Curator, Special Collections
Department of Research and Planning
425 East McPetridge Drive
Chicago, IL 60605
(312) 294-2226

This collection contains drawings dating to the early planning of Chicago's park system, including works by the Olmsted Brothers, William LeBaron, Jens Jensen, the WPA, and photographs documenting construction and use of the parks. Annual reports and files of related articles from the turn-of-the-century are also included. In the process of being computerized, the collection is available by appointment only.

City of New York
Municipal Archives
31 Chambers Street
New York, NY 10007
(212) 566-5292

The Department of Parks and Recreation Collection contains drawings and records. Of the 3,100 drawings (which range in size from 8"x10" to 4'x 26') 1,782 are of Central Park.

The remaining are of fifty-three smaller parks in the five boroughs. An inhouse item-level finding aid is available. The records are scattered beginning in 1933 with more complete records from 1939-1966.

Cornell University Libraries
Department of Manuscript and University Archives
John M. Olin Library
Ithaca, NY 14853
(607) 256-3530

This is an impressive collection of institutional and individual archives, e.g. the records of American Institute of Planners, Clarke and Rapuano, Forest Hills Gardens, Roland Park; the papers of Russell Van Nest Black, Carl M. Feiss, Arthur Cort Holden, Charles Downing Lay, John Nolen, Ellen Shipman, and Clarence S. Stein. Extensive finding aids have been prepared for most collections and many can be searched through the Research Libraries Information Network (RLIN).

Denver Public Library
Western History Department
1357 Broadway
Denver, CO 80203
(303) 571-2012

Local newspapers, insurance maps, maps, bird's eye views and manuscript collections make this collection important for research on development of the Denver area and environs. In the collection are the papers of individual landscape architects S. R. DeBoer and George A. Carlson as well as the offices of McCrary, Culley and Carhart; Harmon, O'Donnell, and Henninger, Co.; and Worthington and Partners. Some of the collection is available in the OCLC database.

Dumbarton Oaks
Garden Library
1703 32nd Street, NW
Washington, DC
(202) 342-3280

Dumbarton Oaks maintains a private reference collection and rare book room, open by appointment. Books and periodicals of the collection (both historic and contemporary) relate to the history of gardens, many of which reference European sites.

Essex Institute
132 Essex Street
Salem, MA 01970
(508) 744-3390

The James Duncan Phillips Library of this private institution (est. 1821) has printed books, atlases, maps, architectural pattern books, as well as a large collection of advertising materials (1830-1950), a photograph collection (100,000) mostly of New England states and Imperial China. Also housed here are the papers of William Gibbon Rantoul, and Samuel McIntire, and the Bowditch family papers.

The Frederick Law Olmsted National Historic Site (Fairsted)
99 Warren Street
Brookline, MA 02146
(617) 566-1689

This National Historic Site was the home and office of Frederick Law Olmsted Sr. and his successor firms until 1980. Today, as a unit of the National Park System, it serves as the archives and conservation headquarters for the drawings and photographs produced by the firm. Some access to the materials is possible

by special arrangements with the Archivist, but the collection is currently in the process of conservation. The site also produces *Linen and Trace*, a quarterly newsletter.

Harvard University Graduate School of Design
Francis Loeb Library
Harvard University Graduate School of Design
Gund Hall, 48 Quincy Street
Cambridge, MA 02138
(617) 495-2574

The Special Collections has a wide range of materials including drawings made of European gardens by traveling fellowship recipients. Also included are the drawings of Frederick Hedge Kennard (1900-30), a Boston landscape architect, the papers of Warren H. Manning, the McFadden collection of materials about oriental gardens and the personal and professional papers of Charles Eliot. A guide published in 1986 describes the collection in detail.

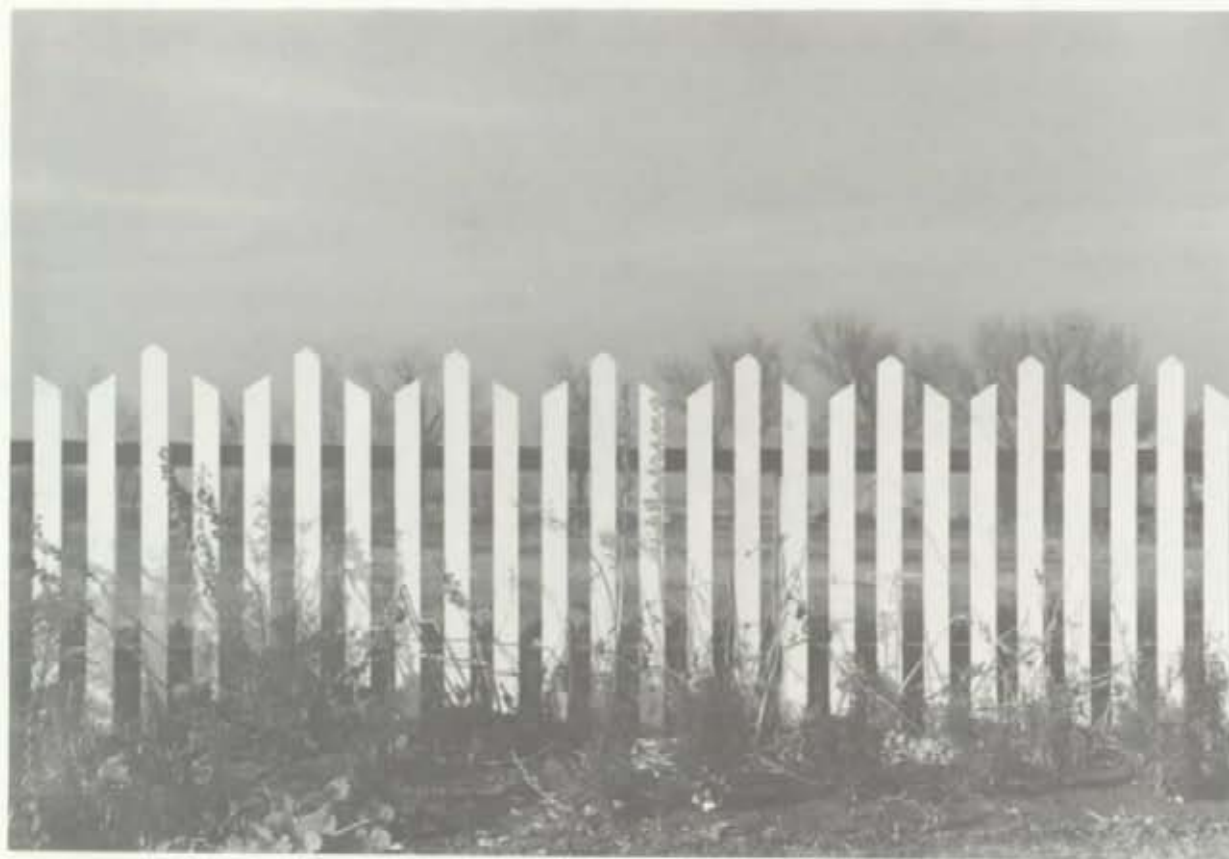
Estates File

This collection is comprised of nine card file drawers of information on historic estates including citations to periodicals. Entries are organized geographically. There are citations to the *New York Times*, books, and the photographs file in the Loeb Library. In addition to the geographic listings, there are listings of the property and owner. The first entry is from 1903, and the last in the 1950's. This file must be used by the individual researcher. No telephone inquiries can be answered.

The Huntington Library, Art Collection, and Botanical Gardens
1151 Oxford Road
San Marino, CA 91108
(818) 504-2225

The history of landscape architecture is a subject category in all the sections of this sections of this rich and diverse collection including art, manuscripts, and rare books. The body of the library includes information on the Huntington site as well as 19-20th century

photographs of other California gardens. British and American theory and practice is substantiated in the images of 18th century British gardens and the manuscripts contained in the Stowe archives. The Art Division has a few original images of Monticello by Jefferson and Mount Vernon by Washington. The Rare Books Collection contains the Ephemera Collection, and 19-20th century advertising materials from the agricultural industry. The Huntington is a center of research in garden history through its programs and fellowships.



Fence
Photo courtesy the Library of Congress

George Eastman House
International Museum of Photography
900 East Avenue
Rochester, NY 14607
(716) 271-3361

The focus of the collection is the history and practice of photography. Thus, most images are only retrievable by the name of the photographer. However, an ongoing project will make the collection accessible by geographic location and subject. Of note is a portfolio of Central Park (1862) by Victor Prevost, autochromes of Rochester parks and private gardens (1909-1930) by Charles C. Zoller, over 40,000 stereographs and a collection of over 1,000 photographs of western landscapes taken for the U.S. Geological Survey by Timothy O'Sullivan and William Jackson.

Iowa State University
College of Design
Department of Landscape Architecture
Ames, IA 50011
(515) 294-5676

The archives of Warren H. Manning are housed at the Iowa State Library. It includes photographs, drawings, lantern slides and papers which relate to Manning's fifty-year career. A complete item-level finding aid (158 pages) is available for purchase. Manning's National Plan Study Brief (1923) is also included in this collection.

Lake County Museum
Lakewood Forest Preserve
Wanconda, IL 60084
(312) 562-8638

The Museum maintains a collection of more than a million postcard images of U.S. sites taken between 1898-1975 by the Curt Teich Company of Chicago, one of the largest producers of postcards in the world.

Library of Congress
Washington, DC 20540
(202) 707-5000

The Library of Congress is one of the largest collections of published material in the U.S. It is housed in several buildings near the U.S. Capitol. To use the general collection, researchers must look up the call number and request it from a librarian who will retrieve the individual book from the stacks. Access to the stacks is restricted to LC librarians and researchers with special permission. Some historic texts are housed in Special Collections and monographs are housed in the Rare Books Division.

Manuscript Division
(202) 707-5383

The Manuscript Division contains the correspondence of the Olmsted office, including the Frederick Law Olmsted Papers and the Olmsted Brothers Papers which include the early correspondence of the ASLA. Other collections of note in the Division include the Daniel Chester French papers.

Prints and Photographs Division
(202) 707-6394

This Division of the Library of Congress serves as the depository for the HABS/HAER Collection of drawings, photographs and data pages. This collection is accessed by writing or visiting the library. The Francis Benjamin Johnston Collection includes a large number of historic photographs and stereographic views of American gardens.

Geography and Map Division
(202) 707-6277

This Division has published a checklist of historic maps and panoramic views of the U.S. and Canada (1884-1950).

Morton Arboretum
Jensen Collection
Sterling Morton Library
Lisle, IL 60532
(708) 719-2400

This Jens Jensen collection includes landscape plans, photographs, correspondence, and family memorabilia. No office records are included.

National Agricultural Library
United States Department of Agriculture
10301 Baltimore Boulevard
Beltsville, MD 20705-2351
(301) 344-4248

The National Agricultural Library is the largest agricultural library in the world. The Library has created a database of pre-1870 American seed trade catalogs, indexes by author, title, and key words. Data elements include proprietors's name, catalog title, year covered,

publisher, place, date of publication and institutions where the catalogs are located.

National Trust for Historic Preservation Library
University of Maryland
Architecture Library
College Park, MD 20742
(301) 405-6320

The National Trust Library is housed in the Architecture Library at the University of Maryland. This library is a good source for preservation publications (especially those that are out of print), newsletters, journal articles, and texts related to preservation.

Smithsonian Institution
Office of Horticulture
Washington, DC 20560
(202) 357-2941

The Garden Club of America's Archive of American Gardens is an extensive slide library (over 20,000), the basis of which is a collection of glass plates commissioned by the GCA in the 1920's. Decorative objects, period garden furniture, books, seed catalogs, and archival material e.g. Horace J. McFarland's Mt. Pleasant Press are indicative of the diversity of this collection.

State University of New York
College of Environmental Science and Forestry
F. Franklin Moon Library
Syracuse, NY 13210
(315) 470-6711

The Moon Library houses the Fletcher Steele Manuscript Collection. This large collection includes client order books, client sketches, renderings and site plans, exhibition prints, and

12,000 film negatives taken by Steele. For access, contact the Moon Library's Archives and Special Collections.

Society for the Preservation of New England Antiquities (SPNEA)
141 Cambridge Street
Boston, MA 02114
(617) 227-3956

The rich and varied collections of this private organization, in addition to books, includes photographs, stereographs and manuscripts. Among the manuscripts are the Codman Family Papers (1790-1968), Herbert W. Browne papers, and architectural drawings which include over 100 plot plans dating from 1740-1948. Also included is the 1938-1939 planting plan of the Walter Gropius House.

Tulane University
Southeastern Architectural Archives
7001 Freret Street
New Orleans, LA 70118
(504) 865-5699

This collection contains rare printed materials with strong regional interest. Professional archives include W.S. Wiedorn (1896-1990) who worked in Florida and Cleveland with Pitkin and Maott before settling in New Orleans, and Dorothy T. Hardie (active 1930-1960). A 94-page catalog with 815 entries may be purchased.

University of California, Berkeley
College of Environmental Design
Berkeley, CA 94720
(415) 643-9999

The Documents Collection houses the Reef Point Gardens Collection of the Beatrix Farrand. An item-level finding aid is available for the Farrand Collection. Also included are the papers of Gertrude Jekyll (which were purchased by Farrand) and the office papers of the firm Lockwood and Thiene. For information, contact the Documents Collection.

University of California, Los Angeles
Research Library
Special Collections
Room A-1713
405 Hilgard Ave. BL87
Los Angeles, CA 90024
(213) 825-4934

This collection includes an oral history of Thomas Church (1978), photographs of Florence Yoch gardens, the Warren Lincoln Marsh (1927-1965) papers, George Alexander Kern (1880-1957) papers and photograph albums, and photographs of Los Angeles gardens by Ernest Mitchell Pratt. In addition, the collection contains a scrap book with 92 original architectural drawings by Jacob Weidenmann, some of which include American gardens as well as a list of plants related to Weidenmann's landscapes. An extensive collection of drawings and papers for Richard Neutra and Frank Lloyd Wright are also housed here.

University of California, Santa Barbara
Architectural Drawings Collection
University Art Museum
Santa Barbara, CA 93106
(805) 893-2724

The Architectural Drawings Collection houses a broad range of materials including archival papers, sketches, working drawing and photographs of completed projects for Irving Gill, George Washington Smith, Rudolf Schindler, Francis Underhill, and A.E. Hanson.

The TELEDYNE-GEOTRONICS Collection of aerial photographs is a companion to the Fairchild Collection (found at Whittier College).

University of Delaware
University of Delaware Library
Newark, DE 19717
(302) 451-2455

The library of Charles van Ravenswaay forms the nucleus of the Unidel Collection of books, pamphlets, reports, nursery and seed catalogs, all illustrating the history and growth of horticulture and landscape from 1760-1900. A 75-page illustrated volume, *Suitable for Cultivation: Horticultural Collections at the University of Delaware Library* is available for purchase. The library also has a substantial collection of historical texts and nursery catalogs. It specializes in late 19th to early 20th century publications.

University of Lowell
Center for Lowell History
1 University Avenue
Lowell, MA 01854
(508) 970-4252

The Center houses the Warren Manning Archives which contains Manning's business records, personal correspondence, project records of his office, professional writings, photographs, field journals, and diaries. An item-level finding aid is available for purchase.

University of Michigan
Art and Architecture Library
Ann Arbor, Michigan 48109-2069
(313) 764-1303

The Art and Architecture Library houses a collection of Jens Jensen's office drawings and some photographs of his work.

University of Oregon
Special Collections
Eugene, OR 97493
(503) 686-3068

Personal and professional archives of Portland firms is the focus of the Architectural Collections. Landscape architectural collections include the Walter H. and Frances Holmes Gerke, David E. Thompson, and Lord and Schryver papers. A computerized index for the drawings has been developed.

University of Pennsylvania
Architectural Archives
University Archives and Records Center
102 Meyerson Hall
210 S. 34th Street
Philadelphia, PA 19104-6311
(215) 898-8323

This collection serves as the repository for the architectural drawings from University collections. The core of the landscape architectural records are composed of the works of Friedrich Weinbrenner, John Nolen, Lawrence Halprin, and Philip Winslow. The archive also houses the records of a number of 19-20th century American architects, many of which are relevant to the University itself, its graduates and faculty, and to the Philadelphia region.

Whittier College
Fairchild Aerial Photography Collection
Department of Geology
Whittier, CA 90608
(213) 693-0771 x363

The Fairchild Aerial Surveys Company was founded in NYC in 1920; they opened their California office in 1929. Included in this collection are aerial photographs of 2360 flights which start in 1927. They are housed in the Department of Geology at Whittier College.

2. Computerized Directories

The Catalog of Landscape Records in the United States
Wave Hill
675 West 252nd Street
Bronx, NY 10471
(212) 549-3200

The Catalog is a computerized, cumulative index to the repositories of records for American landscapes and landscape architects, both past and present. It contains information on the scope and content of public and private collections. The Catalog is operational and is still searching out collections through a national cooperative effort. Since the growth of the database is limited to individual contributions, the Catalog appreciates additional information. A small fee is charged for custom searches.

Cultural Resources Bibliography (CRBIB)
National Park Service
Park Historic Architecture Division
P.O. Box 37127, Mail Stop 422
Washington, DC 20013-72127
(202) 343-8146

Maintained by the Park Historic Architecture Division, CRBIB is a computerized bibliography of all the historic studies, management plans, historic structures reports, cultural landscape reports and other documents produced for cultural resources within the National Park System. A component of the CRBIB, the National Park Service Landscape Bibliography is being developed to list reports that relate to or document cultural landscapes in the National Park System.

List of Classified Structures (LCS)

National Park Service
Park Historic Architecture Division
P.O. Box 37127, Mail Stop 422
Washington, DC 20013-7127
(202) 343-8146

The LCS is a computerized inventory of the historic structures within the National Park System. A component, called "Landscapes in the National Park System," has been compiled in draft, identifying the cultural landscape components listed in the LCS.

Landscape Architecture Foundation Research and Information Clearinghouse (LAFRICH)

LAFRICH
Landscape Architecture Foundation
4401 Connecticut Avenue, NW
Washington, DC 20008-2302
(202) 686-2752

LAFRICH is a computerized bibliographic database providing information from diverse sources. Standardized searches are available for a small fee; custom searches can be arranged.

The National Register Information System (NRIS)

The National Register of Historic Places
Interagency Resources Division
National Park Service
P.O. Box 37127, Mail Stop 413
Washington, DC 20013-7127
(202) 343-9500

This data base includes information on all National Register sites. Access to the database is available to the public.

3. Journals and Publications

Professional and Scholarly Journals

Agricultural History

Agricultural History Center
University of California, Davis
Davis, CA 95616

The Agricultural History Newsletter

U.S. Department of Agriculture
3101 New York Avenue NW #968
Washington, DC 20005-4788

American Farmland

American Farmland Trust
1920 N Street NW #400
Washington, DC 20036

APT Bulletin

Association for Preservation Technology
International
Box 8178
Fredericksburg, VA 22404

Bulletin

The Association for Living Historical Farms and
Agricultural Museums
National Museum of American History Rm 5035
Smithsonian Institution
Washington, DC 25060

Courier

National Park Service
U.S. Department of the Interior
P.O. Box 37127
Washington, DC 20013-7127

CRM Bulletin

Cultural Resource Programs of the National Park
Service
U.S. Department of the Interior
P.O. Box 37127
Washington, DC 20013-7127

Forum

George Wright Society
P.O. Box 65
Hancock, MI 49930-0065

Garden History

Garden History Society
5 the Knoll
Hereford, HR1 1RM, Great Britain

Historic Preservation Magazine

National Trust for Historic Preservation
1785 Massachusetts Avenue, NW
Washington, DC 20036

Journal of the American Planning Association

1313 East 60th Street
Chicago, IL 60637

Journal of Cultural Geography

Bowling Green State University
Popular Culture Center
Bowling Green, OH 43403

The Journal of Garden History

c/o Taylor and Francis, Inc.
242 Cherry Street
Philadelphia, PA 19606

Landscape

P.O. Box 7101
Berkeley, CA 94707

Landscape Architecture

American Society of Landscape Architects
4401 Connecticut Avenue, NW
Washington, DC 20008-2302

Landscape Journal

University of Wisconsin Press
114 N. Murray Street
Madison, WI 53715

Material Culture

Pioneer America Society, Inc.
c/o William D. Walters Jr.
Illinois State University
Department of Geography-Geology
Normal, IL 61701

Museum News

Journal of the American Association of Museums
1225 Eye Street, NW, Suite 200
Washington, DC 20005

Old House Journal

Old House Journal Corporation
69A Seventh Avenue
Brooklyn, NY 11217

Preservation Forum

National Trust for Historic Preservation
1785 Massachusetts Avenue, NW
Washington, DC 20036

Historic Periodicals

Historic periodicals are helpful primary research materials. A number of periodicals published in the 19th and early 20th centuries explored landscape and garden design. Some are:

American Architecture and Building News (1876-1908, then it became *The American Architect* until 1936)

American Landscape Architect (1929-1932)

American Homes and Gardens (1905-1915)

Antiques (1922-present)

Architectural Forum (1892-1954)

Architectural Record (1891-present)

Arts and Decoration (1910-1942)

The Craftsman (1901-1916)

Country Life in America (1901-1939)

Garden and Forest (1888-1897)

The Garden Magazine

The House Beautiful (1896-present)

House and Garden (1901-present)

Modern Cemetery (1891-1895, later became *Park and Cemetery*, then *Park and Cemetery and Landscape Gardening*)

Pencil Points (1920-1945, then became *Progressive Architecture*)

Town and Country (1846-present)

The Western Architect (1901-1931)

Popular Magazines

The following periodicals contain information on new gardens, architecture or other related topics. Occasionally, they feature articles on historic landscapes, gardens, or historic plants.

Architectural Digest

Circulation Dept.
Knapp Communications Corp
5900 Wilshire Blvd.
Los Angeles, CA 90036

Country Living

Hearst Magazines
Country Living
224 W. 57th Street
New York, NY 10019

Connoisseur

Hearst Magazines
Connoisseur
224 W. 57th
New York, NY 10019

Garden Design

American Society of Landscape Architects
4401 Connecticut Avenue, NW
Washington, DC 20008-2302
Subscriptions:
Box 55455
Boulder, CO 80321-5545

HG (formerly House and Garden)

Conde Nast Publications, Inc.
House and Garden Magazine
350 Madison Avenue
New York, NY 10017

Horticulture

Horticulture Limited Partnership
20 Park Plaza, Suite 1220
Boston, MA 02116-0643

Southern Living

The Time Inc. Magazine Company
Southern Progress Corp.
Time and Life Building
Rockefeller Center
1271 Avenue of the Americas
New York, NY 10020

CHAPTER 5

Sources of Information on Historic Plant Materials



Franklin Park Conservatory, Columbus, Ohio
Photo, NPS files

This chapter contains sources of information on appropriate historic plant material. It is not a list of commercial nurseries. Rather, this list provides organizations and reference materials that will help individuals choose, identify, and locate historic plants. Before using these sources, however, one of the best places to find surviving historic plant materials is on or near your historic property.

Many historic plants have remained unchanged since their introduction and some plants and seeds are available from commercial sources. In cases where specific plants or their cultivars have been lost, plant societies and arboreta are often helpful sources of information on suitable substitute materials, or to help in the technical aspects of propagating remaining plants onsite. As interest increases in historic plant varieties, more and more nurseries are introducing the originals back into the nursery trade. The Thomas Jefferson Center for Historic Plants at Monticello and The Seeds and Plants Committee of the Association for Living Farms and Museums (ALFAM) have both compiled extensive lists of commercial sources for historic plant material. Both the *Source List for Historic Seeds and Plants* and the list produced by the Thomas Jefferson Center are available from the individual organizations and are listed below.

1. Organizations

American Horticultural Society
7931 East Blvd. Drive
Alexandria, VA 22308
(703) 836-4606

This membership organization publishes a bimonthly magazine, the *American Horticulturist*, which occasionally includes articles on preservation and historic plants. The Society provides a source sheet on suppliers and seed exchanges related to heirloom varieties. The Gardening Information Service (800-777-7931) is available to members from 11 AM-3 PM EST.

Association for Living History Farms and Agricultural Museums (ALHFAM)
Natural Museum of American History
Smithsonian Institution
Washington, DC 20560
(202) 357-1300

This professional organization offers a bimonthly newsletter, occasional regional meetings, and an annual conference which includes seeds and plant sessions.

Databank Locator Service
Historic Iris Preservation Society
c/o Larry Doucette
Databank Locator Service
482 Middlesex Avenue
Wilmington, MA 01887
(508) 658-4586

The Service will complete searches for members to locate irises in private gardens and collections.

Flower and Herb Exchange
RR 3 Box 239
Decorah, IA 52101
(319) 382-5990

The Flower and Herb Exchange was founded in 1989, modelled after the Seed Savers Exchange. The FFE provides assistance to gardeners and historic property managers interested in locating heirloom or unusual varieties of flowers and herbs. The Exchange makes cuttings and seeds available as requested. A catalog is available once a year with a membership fee. A brochure is also available from the address above.

Heirloom Vegetable Program
New York State Agricultural Experiment Station
Hedrick Hall
North Street
Geneva, NY 14456
(315) 787-2311

Heirloom Seed Project
Landis Valley Museum
2451 Kessel Hill Road
Lancaster, PA 17601

The Landis Valley Museum conducts education programs, and has a museum catalog for heirloom seeds.

Heritage Roses Group
925 Galvin Dr.
El Cerrito, CA 94538
(415) 526-6960

This is an informal membership organization with six regional chapters nationwide. The Heritage Rose Group is dedicated to the preservation and research of old roses. They

produce a quarterly newsletter, *Rose Letter*, available to members. The Southwest chapter has researched many of the old roses actively used in historic California gardens and estates.

Historic Iris Preservation Society
4855 Santiago Way
Colorado Springs, CO 80917

The Historic Iris Preservation Society operates a Databank Locator Service.

Historic Orchard Project
Department of Entomology
University of Massachusetts
Amherst, MA 01003
(413) 545-2283

This program surveyed many National Parks which have historic fruit and nut trees. It has developed a source list for historic fruit materials, which will be available in January, 1992.

L.H. Bailey Hortorium
462 Mann Library Building
Cornell University
Ithaca, NY 14853
(607) 255-7981

The Ethel Zoe Bailey Nursery Catalog Collection is a source of information on the plants offered by historic nurseries. Researchers may visit the collection to search specific historic catalogs or the curator may be contacted to search the current records for sources of individual plants.

Native Seeds/SEARCH

2509 North Campbell Avenue #325
Tucson, AZ 85709

This nonprofit organization publishes a seed list, *Native American Seeds*. The group specializes in Native American and southwestern plants.

North American Fruit Explorers

Route 1, Box 94
Chapin, IL 62628
(217) 245-7589

This membership organization is primarily a network of individuals interested in unusual fruit varieties. Many are amateurs and some are specifically interested in antique varieties. The Explorers publish a quarterly journal, host annual meetings and provide a lending library of rare and out of print publications for members. For membership information, contact the address above.

Old Sturbridge Village

1 Old Sturbridge Village Road
Sturbridge, MA 01566-0200
(508) 347-3362

This museum village includes a full working historical farm of the rural countryside, and two agricultural complexes. Field crops and flowers are grown using cultivation techniques and plant materials documented to 1930. Native and historic seeds and plant lists are available.

Seed Saver's Exchange

RR 3 Box 239
Decorah, IA 52101
(319) 382-5990

The Exchange produces an annual seed inventory listing sources and locations of heirloom vegetables as. The catalog and two other publications are available for a small membership fee. Seed Saver's holds an annual conference for its members and manages a heritage farm where historic plant materials are preserved. A color brochure describing the Exchange is available for \$1.00.

Strawberry Banke

P.O. Box 300
Portsmouth, NH 03802-0300
(603) 433-1100

Strawberry Banke has reconstructed a number of period gardens, with historic plant material based on archeological information which offer an opportunity to see historic plant material used in period gardens. They offer an annual symposium which includes a session on historic plants. Their summer program, Summer Gardening Day, includes historic plant societies and nurseries who are available for informal discussion. The organization is also active in research and reconstruction of historic fences.

Thomas Jefferson Center for Historic Plants

Monticello
P.O. Box 316
Charlottesville, VA 22902
(804) 979-5283

The center documents, collects, propagates and sells historic plant varieties found in American gardens prior to 1900, including many of the

plants used by Thomas Jefferson. The Center publishes a newsletter/catalog, *Twingleaf*.

2. Publications

Listed below are publications that provide information related to locating historic plants.

Andersen Horticultural Library Source List of Plants and Seeds

By Richard T. Isaacson
Second Edition, 1989
Minnesota Landscape Arboretum
3675 Arbor Drive, Box 39
Chanhassen, MN 55317
(612)443-2460

This publication includes some 4,000 entries of plants and sources where they may be purchased. The publication includes the botanical names and is cross-referenced by common name. Address for the nurseries are also included. It is available for purchase from the Landscape Arboretum. The third edition will be published in the fall of 1992.

Combined Rose List

By Beverley R. Dobson
215 Harriman Road
Irvington, NY 10533

This list is published by the author annually. The publication includes an annotated list of 5000 old and new roses, and available sources.

Cumulative Check List

By Howard Brookins
Society for Siberian Iris
N75 W14257 North Point Drive
Menomonee Falls, WI 53051-4325

A check list is available for a small fee. A list of available sources is updated regularly, and source information is accessible upon request. A similar check list is being compiled by the Society for Japanese Iris.

Fruit and Nut Inventory

Kent Whealy, editor
Seed Savers Exchange
RR 3, Box 239
Decorah, IA 52101
(319) 382-5990

This is a complete list of fruit and nuts in the United States. The list includes commercial sources.

Garden Seed Inventory

Second edition
Seed Savers Exchange
Decorah, IA 1988

This is a complete listing of open-pollinated vegetable varieties currently available in the U.S. and Canada.

Gardening By Mail

By Barbara J. Barton
Boston: Houghton Mifflin, 1990

Handbook on Chrysanthemum Classification

1990 edition
National Chrysanthemum Society, USA
c/o Robert Knox
12800 Briar Forest, #71
Houston, TX 77077

This handbook offers a comprehensive list of 2,800 cultivars and also includes a list of sources and nurseries. It is available for purchase from the address above.

Source List for Historic Seeds and Plants

Scott B. Kunst and Charles S. Thomforde
For the Seeds and Plant Materials Committee,
Association for Living History Farms and
Agricultural Museums
c/o Scott Kunst
536 Third Street
Ann Arbor, MI 48103

The Source List is an extensive list of organizations, nurseries, and finding aids that provide information on historic plant material. The list includes ornamentals, perennials, herbs, fruits and nuts. The list also provides suggestions for other ways to find historic plants. For a copy, send \$1.00 with a self-addressed stamped envelope to the above address.

"Where Have All the Flowers Gone? A Preliminary List of Origination Lists for Ornamental Plants."

Scott Kunst and Arthur O. Tucker
APT Bulletin, Volume XXI, No. 2 (1989)
pp. 43-50

This article cites origination lists for 31 important ornamentals.

Index

- Acknowledgements ii
- Advisory Council on Historic Preservation 4
- Agricultural History 82
- Agricultural History Newsletter 82
- ALABAMA 18
 - Alabama Historical Commission (SHPO) 18
 - Birmingham Historical Society 18
 - Design Alabama, Inc. 18
 - Tuscaloosa County Preservation Society 18
- ALASKA 19
 - Department of Natural Resources (SHPO) 19
 - Friends of Kennecott 19
- Alliance for Historic Landscape Preservation 7
- America's Great Urban Parks 8
- American Association for State and Local History 7
- American Association of Botanical Gardens and Arboreta 7
- American Association of Nurserymen 7
- American Battlefield Protection Foundation 7
- American Canal Society 8
- American Farmland 82
- American Farmland Trust 8
- American Horticultural Society 8, 86
- American Institute of Architects 8
- American Planning Association 8
- American Society of Landscape Architects (ASLA) 8, 76
- Andersen Horticultural Library Source List of Plants and Seeds 88
- Appalachian Trail Conference 8
- APT Bulletin 82
- Archeological Conservancy 9
- Architectural Digest 83
- ARIZONA 19
 - Arizona Department of Transportation 19
 - Arizona Preservation Foundation 19
 - Arizona State Parks (SHPO) 19
 - Museum of Northern Arizona 19
 - Yuma Crossing Foundation 19

ARKANSAS 20

- Arkansas Historic Preservation Program (SHPO) 20
- Arnold Arboretum of Harvard University 73
- Association for Gravestone Studies 9
- Association for Living History Farms and Agricultural Museums 9, 86
- Association for Preservation Technology International (APT) 9
- Association for the Preservation of Civil War Sites 9
- Athenaeum of Philadelphia 76
- Auburn University 64
- Ball State University 66, 71
- Boston University 71
- Brooklyn Botanic Gardens 73
- Bulletin 82
- Bureau of Land Management 4

CALIFORNIA 20

- Across California Conservancy 21
- California Oak Foundation 21
- California Preservation Foundation 21
- City of Visalia 21
- Department of Parks and Recreation 20
- East Bay Regional District 20
- Los Angeles Conservancy 21
- Oakland Office of Parks and Recreation 20
- Office of Historic Preservation (SHPO) 20
- Resource Protection Division 20
- Riverside Park and Recreation Department 21
- San Diego Historical Society 21
- California State Polytechnic University 65, 76
- Catalog of Landscape Records in the United States 9, 81
- Cherokee Garden Center 16
- Chicago Botanic Garden 73
- Chicago Park District 76
- City College of New York 68
- City of New York Municipal Archives 76
- COLORADO 22**
 - Colorado Historical Society (SHPO) 22
 - Colorado Open Lands 22

Colorado Scenic and Historic Byways

- Commission 22
- Colorado State Parks 22
- Denver Parks and Recreation 22
- Colorado State University 65
- Columbia Gorge Commission 16
- Columbia University 72, 76
- Combined Rose List 88
- CONNECTICUT 23**
 - Bureau of Parks and Forests 23
 - Connecticut Historical Commission (SHPO) 23
 - Connecticut Trust for Historic Preservation 23
 - Department of Transportation 23
 - Greater Hartford Architecture Conservancy 24
 - Guilford Preservation Alliance 23
 - New Haven Foundation 24
 - Residents for Rural Roads 23
 - Connoisseur 83
 - Conservation Fund 9
 - Continuing Education 73
 - Cornell University 68, 72
 - Cornell University Libraries 77
 - Country Living 83
 - Countryside Institute 16
 - Courier 82
 - CRM Bulletin 82
 - Cultural Resources Bibliography (CRBIB) 81
 - Cumulative Check List, Society for Siberian Iris 88
 - Databank Locator Service, Historic Iris Preservation Society 86
- DELAWARE 24**
 - Bureau of Archeology and Historic Preservation (SHPO) 24
 - Department of Agriculture 24
 - Department of Natural Resources 24
 - Historical Society of Delaware 24
 - Denver Public Library 77
 - Department of Conservation and Natural Resources 41

DISTRICT OF COLUMBIA 25

- Historic Preservation Division (SHPO) 25
- L'Enfant Trust 25
- Dumbarton Oaks 77
- Eastern Michigan University 71
- Educational Programs 63
- Essex Institute 77
- Federal Agencies 4
- FLORIDA 25**
 - Alachua Conservation Trust 25
 - Bureau of Historic Preservation (SHPO) 25
 - Florida Keys Land and Sea Trust 25
 - Florida Trust for Historic Preservation 25
 - Land Trust of Dade County, Inc. 25
 - Metro Dade Historic Preservation Division 25
 - Flower and Herb Exchange 86
 - Forest Service 4
 - Forum 82
 - Frederick Law Olmsted Association 9
 - Frederick Law Olmsted National Historic Site (Fairsted) 77
 - Fruit and Nut Inventory 88
 - Garden Club of America 10
 - Garden Conservancy 9
 - Garden Design 83
 - Garden History 82
 - Garden Seed Inventory 88
 - Gardening By Mail 88
 - Geography and Map Division Library of Congress 79
 - George Eastman House 78
 - George Washington University 70, 73
- GEORGIA 26**
 - Department of Natural Resources (SHPO) 26
 - Georgia Trust for Historic Preservation 26
 - Savatee Nacoochee Community Association 26
 - Georgia State University 70
 - Goucher College 71
 - Greensward Foundation 16

- Handbook on Chrysanthemum Classification 88
 Harvard University Graduate School of Design 67
 Loeb Library 77
- HAWAII 26**
 Department of Land and Natural Resources (SHPO) 26
 Historic Hawaii Foundation 26
 Moanalua Gardens Foundation 26
 Heirloom Seed Project 86
 Heirloom Vegetable Program 86
 Heritage Roses Group 86
 HG (formerly House and Garden) 83
 Historic Chattahoochee Commission 16
 Historic Iris Preservation Society 86
 Historic Orchard Project 86
 Historic Periodicals 83
 Historic Preservation Magazine 82
 Horticulture 84
 Huntington Library, Art Collection, and Botanical Gardens 78
- IDAHO 27**
 Historic Chesterfield Foundation 27
 Idaho Department of Parks and Recreation 27
 Idaho Heritage Trust 27
 Idaho Historical Society (SHPO) 27
- ILLINOIS 28**
 Canal Corridor Association 29
 Chicago Park District 28
 City of Highland Park 28
 Forest Preserve District of DuPage County 28
 Illinois Historic Preservation Agency (SHPO) 28
 Lake County Forest Preserve District 28
 Morton Arboretum 28
 Open Lands Group 28
- INDIANA 29**
 Division of Historic Preservation and Archeology (SHPO) 29
 Division of Outdoor Recreation 29
 Historic Landmarks Foundation of Indiana 29
- International Council On Monuments and Sites 10**
 Introduction viii
 IOWA 30
 State Historical Society of Iowa (SHPO) 30
 Iowa State University 66, 78
- Journal of Cultural Geography 82**
Journal of Garden History 82
Journal of the American Planning Association 82
- KANSAS 30**
 City of Mission Hills 30
 Kansas Department of Wildlife and Parks 30
 Kansas State Historical Society (SHPO) 30
 State Board of Agriculture 30
 State Department of Transportation 30
 Kansas State University 66
- KENTUCKY 31**
 Bluegrass Area Development District 31
 Bluegrass Tomorrow 32
 Elkhorn Land and Historic Trust 32
 Georgetown-Scott County Joint Planning Office 31
 Jefferson County Office of Historic Preservation and Archives 31
 Kentucky Heritage Council 31
 Land and Nature Trust of the Bluegrass 32
 Lexington-Frankfort Scenic Corridor, Inc. 32
 Lexington/Fayette Greenspace Conservancy Commission 31
 Lexington/Fayette Office of Historic Preservation 31
 Louisville Friends of Olmsted Parks 32
 Scenic Kentucky 32
- L.H. Bailey Hortorium 86**
Land Trust Alliance 11
Landscape 83
Landscape Architecture (Magazine) 83
Landscape Architecture Foundation Research and Information Clearing House 82
Landscape Architecture Programs 64
- Landscape Journal 83**
 Library of Congress 6, 79
 Manuscript Division 79
 Prints and Photographs Division 79
 List of Classified Structures (LCS) 82
 Longwood Graduate Program 74
- LOUISIANA 33**
 Office of Cultural Development (SHPO) 33
 River Road Coalition 33
 Louisiana State University 67
- MAINE 33**
 Greater Portland Landmarks 33
 Maine Coast Heritage Trust 33
 Maine Historic Preservation Commission (SHPO) 33
 Maine Olmsted Alliance for Parks and Landscapes 34
 Maine State Planning Office 33
 Mary Washington College 73
- MARYLAND 34**
 Department of Natural Resources 34
 Friends of Maryland's Olmsted Parks and Landscapes 35
 Maryland Environmental Trust 35
 Maryland Historical Trust (SHPO) 34
 National Capital Park and Planning Commission 34
 Preservation Maryland 35
 Save Historic Annetam Foundation 35
- MASSACHUSETTS 35**
 Boston Parks and Recreation Department 36
 Department of Environmental Management 35
 Department of Public Works 36
 Historic Massachusetts, Inc. 36
 Massachusetts Association for Olmsted Parks 36
 Massachusetts Historical Commission (SHPO) 35
 Metropolitan District Commission 36
 Nantucket Historic District Commission 36
 The Center for Rural Massachusetts 37
 The Trustees of Reservations 36

- Material Culture 83
MICHIGAN 37
 Bureau of History (SHPO) 37
 Detroit Historic Designation Advisory Board 37
 Michigan Historic Preservation Network 37
 Michigan State University 67, 71
 Middle Tennessee State University 72
MINNESOTA 38
 Minneapolis Park and Recreation Board 38
 Minnesota Historical Society 38
MISSISSIPPI 38
 City Hall, Port Gibson 39
 Department of Archives and History (SHPO) 38
 Historic Natchez Foundation 39
 Meridian Planning Department 39
 Mississippi Heritage Trust 39
 Mississippi State University 68
MISSOURI 39
 Department of Natural Resources Historic Preservation Program 39
 Historic Sites Program 40
 Kansas City Parks, Recreation, and Boulevards 40
MONTANA 40
 Department of Fish, Wildlife and Parks 40
 Department of Transportation 40
 Montana Historical Society (SHPO) 40
 Morton Arboretum 79
 Museum News 83
 National Agricultural Library 79
 National Alliance of Preservation Commissions 11
 National Arboretum 4
 National Association for Olmsted Parks (NAOP) 11
 National Audubon Society 11
 National Conference of State Historic Preservation Officers (NCSHPO) 11
 National Council of Garden Clubs, Inc. 11
 National Endowment for the Arts (NEA) 6
 National Institute for Conservation of Cultural Property (NIC) 11
 National Park Service
 Anthropology Division 6
 Archeological Assistance Division 6
 Cultural Programs 4
 Curatorial Services Division 6
 Historic American Buildings Survey (HABS) 5
 Historic American Engineering Survey (HAER) 5
 History Division 4
 Interagency Resources Division 5
 National Register of Historic Places 5
 Park Historic Architecture Division 5
 Preservation Assistance Division 5
 Recreation Resources Assistance Division 6
 Regional Offices 14
 Technical Preservation Services Branch 5
 National Parks and Conservation Association 12
 National Register Information System (NRIS) 82
 National Society of Colonial Dames of America 12
 National Trust for Historic Preservation 12
 Regional offices 15
 Library 79
 Native Seeds/SEARCH 87
 Natural Germplasm Resources Laboratory 4
NEBRASKA 41
 City of Lincoln, Parks and Recreation Department 41
 Landmarks Heritage Preservation Commission 41
 Nebraska State Historical Society (SHPO) 41
 Nebraska Statewide Arboretum 41
NEVADA 41
 Department of Conservation and Natural Resources 41
 New England Garden History Society 16
NEW HAMPSHIRE 42
 Division of Historical Resources (SHPO) 42
 Division of Parks and Recreation 42
 Governor's Commission on New Hampshire in the 21st Century 42
 Inherit New Hampshire 42
 New Hampshire Historical Society 42
 Society for the Protection of New Hampshire Forests 42
 Strawberry Banke 42
NEW JERSEY 43
 Department of Environmental Protection Greenacres Division 43
 Morris County Park Commission 44
 Natural and Historic Resources Group 43
 New Jersey Historic Trust 43
 Office of New Jersey Heritage (SHPO) 43
NEW MEXICO 44
 Land Resources and Regulation Department 44
 Office of Cultural Affairs (SHPO) 44
NEW YORK 44
 Buffalo Friends of Olmsted Parks 46
 Bureau of Historic Sites 45
 City Parks Foundation 46
 Department of Environmental Conservation 45
 Division of Coastal Resources and Waterfront Revitalization 45
 Field Services Bureau 44
 Historic House Trust of New York City 46
 Landmarks Society of Western New York 47
 New York Landmarks Conservancy 45
 New York Parks and Conservation Association 46
 New York State Association for Olmsted Parks 46
 New York State Council on the Arts 45
 NY State Office of Parks, Recreation, and Historic Preservation 44
 Open Space Institute, Inc. 46
 Preservation Coalition of Erie County 47
 Preservation League of New York State 45
 Society for the Preservation of Long Island Antiquities 47
 Sunnyside Foundation 47
 Urban Cultural Parks Program 45

- New York Botanical Garden 74
 North American Fruit Explorers 87
NORTH CAROLINA 47
 Charlotte-Mecklenburg Historic Landmarks Commission 48
 Division of Archives and History 47
 Historic Preservation Foundation of North Carolina 48
 Historic Properties Commission 48
 Stagville Preservation Center 48
 North Carolina State University 68
NORTH DAKOTA 48
 State Historical Society of North Dakota (SHPO) 48
- OHIO** 49
 Cleveland Metro Parks 49
 Columbus Metro Parks 49
 Department of Administrative Services 49
 Northwest Ohio Rural Conservation Committee 49
 Ohio Historical Society (SHPO) 49
 Ohio Parks and Recreation Association 49
 Ohio State University 68
OKLAHOMA 50
 Oklahoma Historical Society (SHPO) 50
 Old House Journal 83
 Old Sturbridge Village 87
OREGON 50
 Historic Preservation League of Oregon 50
 Land Conservation and Development Commission 50
 Oregon State Parks and Recreation (SHPO) 50
 Oregon Trail Coordinating Council 50
 Portland Historical Landmarks Commission 50
 Organization of American History 12
 Partners for Livable Places 12
PENNSYLVANIA 51
 Berks County Conservancy 52
 Brandywine Conservancy 51
 Bucks County Conservancy 52
 Bureau of Farmland Protection 51
 Bureau of State Parks 51
 Department of Community Affairs 51
 Fairmount Park Commission 53
 Natural Lands Trust 51
 Pennsylvania Historical and Museum Commission 51
 Western Pennsylvania Conservancy 52
 Pennsylvania State University 69
 Pioneer America Society 12
 Popular Magazines 83
 Preservation Action 13
 Preservation Forum 83
 Professional and Scholarly Journals 82
 Purdue University 66
 Radcliffe Seminars 74
 Rails to Trails Conservancy 13
 Red Hills Conservation Association 16
 Regional Organizations 14
 Resources for Historic Landscape Research 75
RHODE ISLAND 53
 Department of Environmental Management 53
 Heritage Trust of Rhode Island 54
 Newport Office of Planning, Zoning, and Development 54
 Preservation Society of Newport County 54
 Providence Preservation Society 54
 Rhode Island Association for Olmsted Landscapes 54
 Rhode Island Historical Preservation Commission (SHPO) 53
 Rhode Island School of Design 69
 Roger Williams College 72
 Rutgers-The State University of New Jersey 68
 Savannah College of Art & Design 70
 Seed Saver's Exchange 87
 Smithsonian Institution 79
 Society for American Archeology 13
 Society for the Preservation of New England Antiquities 16
 Society for the Preservation of New England Antiquities (SPNEA) 80
 Society of Architectural Historians (SAH) 13
 Source List for Historic Seeds and Plants 88
 Sources of Information on Historic Plant Materials 85
SOUTH CAROLINA 54
 Buford Open Land Trust 55
 Department of Archives and History (SHPO) 54
 Historic Charleston Foundation 54
 Historic Columbia Foundation 55
 Lowcountry Open Land Trust 55
 South Carolina Coastal Conservation League 55
SOUTH DAKOTA 55
 Historic South Dakota Foundation 55
 South Dakota State Historical Society (SHPO) 55
 South East Missouri State University 71
 Southern Garden History Society 16
 Southern Living 84
 State and Local Organizations 17
 State University of New York 68
 Moon Library 79
 Strawberry Banke 87
TENNESSEE 56
 Century Farms Program 56
 Department of Environment and Conservation 56
 Department of Tourism 56
 Department of Transportation 56
 Historic Rugby, Inc. 56
 Tennessee Historical Commission (SHPO) 56
 Tennessee River Gorge Trust 56
 Williamson County Planning Commission 56
TEXAS 57
 State Department of Highways and Public Transportation 57
 Texas Family Land Heritage Program 57
 Texas Historical Commission (SHPO) 57
 Texas Parks and Wildlife Department 57
 Texas A&M University 69

Texas Tech University 69
The Nature Conservancy 12
Thomas Jefferson Center for Historic Plants 87
Townscape Institute 13
Trust for Public Land 13
Tulane University 80

U.S. Army Corps of Engineers 7
U.S. Department of Agriculture 4
U.S. Department of the Interior 4
U.S. Department of Transportation 6
U.S. Government Printing Office 7
University of Arizona 64
University of Arkansas 65
University of California, Berkeley 65, 73, 80
University of California, Davis 65
University of California, Los Angeles 80
University of California, Santa Barbara 80
University of Colorado at Denver 65
University of Delaware 80
University of Florida 65
University of Georgia 65, 71, 73
University of Idaho 66
University of Illinois 66
University of Kentucky 67
University of Lowell 81
University of Massachusetts 67
University of Michigan 67, 81
University of Minnesota 67
University of Oregon 68, 72, 81
University of Pennsylvania 69, 72
University of Vermont 72
University of Virginia 70
University of Washington 70, 74
University of Wisconsin 70
Urban Land Institute 13
UTAH 57

Bluff City Historic Preservation Association
58
Utah Heritage Foundation 57
Utah State Historical Society (SHPO) 57
Utah State University 69

VERMONT 58

Agency of Environmental Conservation 58
Mad River Valley Planning District 58
Preservation Trust of Vermont 58
Vermont Division for Historic Preservation
(SHPO) 58
Vermont Land Trust 59

Vernacular Architecture Forum 13
Victorian Society of America 13

VIRGINIA 59

Association for the Preservation of Virginia
Antiquities 59
Department of Historic Resources (SHPO) 59
Friends of the Rappahannock 60
Lower James River Association 60
Piedmont Environmental Council 60
Preservation Alliance of Virginia 59
Preservation Alliance of West Virginia 61
The Garden Club of Virginia 60
Virginia Canals and Navigation Association
60
Virginia Historical Society 59
Virginia Outdoors Foundation 59
Waterford Foundation 60
Virginia Polytechnic Institute & State University
69

WASHINGTON 61

Friends of Seattle's Olmsted Parks 61
Office of Archeology and Historic
Preservation (SHPO) 61
Seattle Department of Parks and Recreation
61
Washington Trust for Historic Preservation
61
Washington State University 70

WEST VIRGINIA 61

Department of Culture and History (SHPO)
61
Division of Tourism and Parks 61
West Virginia University 70
Whittier College 81
WISCONSIN 62
Department of Development 62
Department of Natural Resources 62

State Historical Society of Wisconsin (SHPO)
62

The Clearing Institute 62
Wisconsin Trust for Historic Preservation 62

WYOMING 62

Department of Commerce 62
Wyoming State Archives (SHPO) 62

INFORMATION UPDATE FORM

Historic Landscape Directory

In order to update this Directory in 1992-1993, the National Park Service welcomes suggestions for additions, corrections, and deletions. Please include information on additional organizations, programs as well as any corrections to the existing entries. Information on site-specific organizations and historic landscapes open to the public is also appreciated.

Please complete this form and mail it to:

Historic Landscape Directory Phone: (202) 343-9578
 Technical Preservation Services Branch FAX: (202) 343-3803
 Preservation Assistance Division
 National Park Service
 P.O. Box 37127, Mail Stop 424
 Washington, D.C. 20013-7127

This entry is a correction
 addition
 deletion

Chapter National/Regional Organizations
 State/Local Organizations
 Educational Programs
 Sources of Research Information
 Information on Historic Plant Material

Page

Please print or type
 the correction:

Are you aware of any other organizations, agencies or institutions whose mandate or programs relate to historic landscape preservation?

Name of Organization _____

Address _____

Phone _____

Describe programs _____

Are you aware of any historic landscapes in your state, that are open to the public?

Property _____

Owner _____

Address _____

Phone _____

Property _____

Owner _____

Address _____

Phone _____

Form completed by:

Name _____

Address _____

Phone _____

Please use the back of this form for additional entries.

Continuation from previous page

Additional Organizations

Name of Organization _____
 Address _____

 Phone _____
 Describe programs _____

Name of Organization _____
 Address _____

 Phone _____
 Describe programs _____

Name of Organization _____
 Address _____

 Phone _____
 Describe programs _____

Additional Historic Properties

Property _____
 Owner _____
 Address _____
 Phone _____

Property _____
 Owner _____
 Address _____
 Phone _____

Property _____
 Owner _____
 Address _____
 Phone _____

Property _____
 Owner _____
 Address _____
 Phone _____

Property _____
 Owner _____
 Address _____
 Phone _____

Property _____
 Owner _____
 Address _____
 Phone _____

Please enclose any pertinent publications, program descriptions, or property brochures. Thank you for your contribution to the Historic Landscape Directory.

Continuation from previous page

Additional Organizations

Name of Organization _____
Address _____
Phone _____
Describe programs _____

Name of Organization _____
Address _____
Phone _____
Describe programs _____

Name of Organization _____
Address _____
Phone _____
Describe programs _____

Additional Historic Properties

Property _____
Owner _____
Address _____
Phone _____

Property _____
Owner _____
Address _____
Phone _____

Property _____
Owner _____
Address _____
Phone _____

Property _____
Owner _____
Address _____
Phone _____

Property _____
Owner _____
Address _____
Phone _____

Property _____
Owner _____
Address _____
Phone _____

Please enclose any pertinent publications, program descriptions, or property brochures. Thank you for your contribution to the Historic Landscape Directory.

INFORMATION UPDATE FORM

Historic Landscape Directory

In order to update this Directory in 1992-1993, the National Park Service welcomes suggestions for additions, corrections, and deletions. Please include information on additional organizations, programs as well as any corrections to the existing entries. Information on site-specific organizations and historic landscapes open to the public is also appreciated.

Please complete this form and mail it to:

Historic Landscape Directory Phone: (202) 343-9578
Technical Preservation Services Branch FAX: (202) 343-3803
Preservation Assistance Division
National Park Service
P.O. Box 37127, Mail Stop 424
Washington, D.C. 20013-7127

This entry is a correction
 addition
 deletion

Chapter National/Regional Organizations
 State/Local Organizations
 Educational Programs
 Sources of Research Information
 Information on Historic Plant Material

Page

Please print or type
the correction:

Are you aware of any other organizations, agencies or institutions whose mandate or programs relate to historic landscape preservation?

Name of Organization _____
Address _____

Phone _____
Describe programs _____

Are you aware of any historic landscapes in your state, that are open to the public?

Property _____
Owner _____
Address _____
Phone _____

Property _____
Owner _____
Address _____
Phone _____

Form completed by:

Name _____
Address _____
Phone _____

Please use the back of this form for additional entries.