

WILFRED

VICKY

TEDDY

SALLY

RENE

PALOMA

OMAR

NANA

MARCO

LILI

KYLE

JOSEPHINE

ISIDORE

HANNA

GUSTAV

FAY

EDOUARD

DOLLY

CRISTOBAL

BERTHA

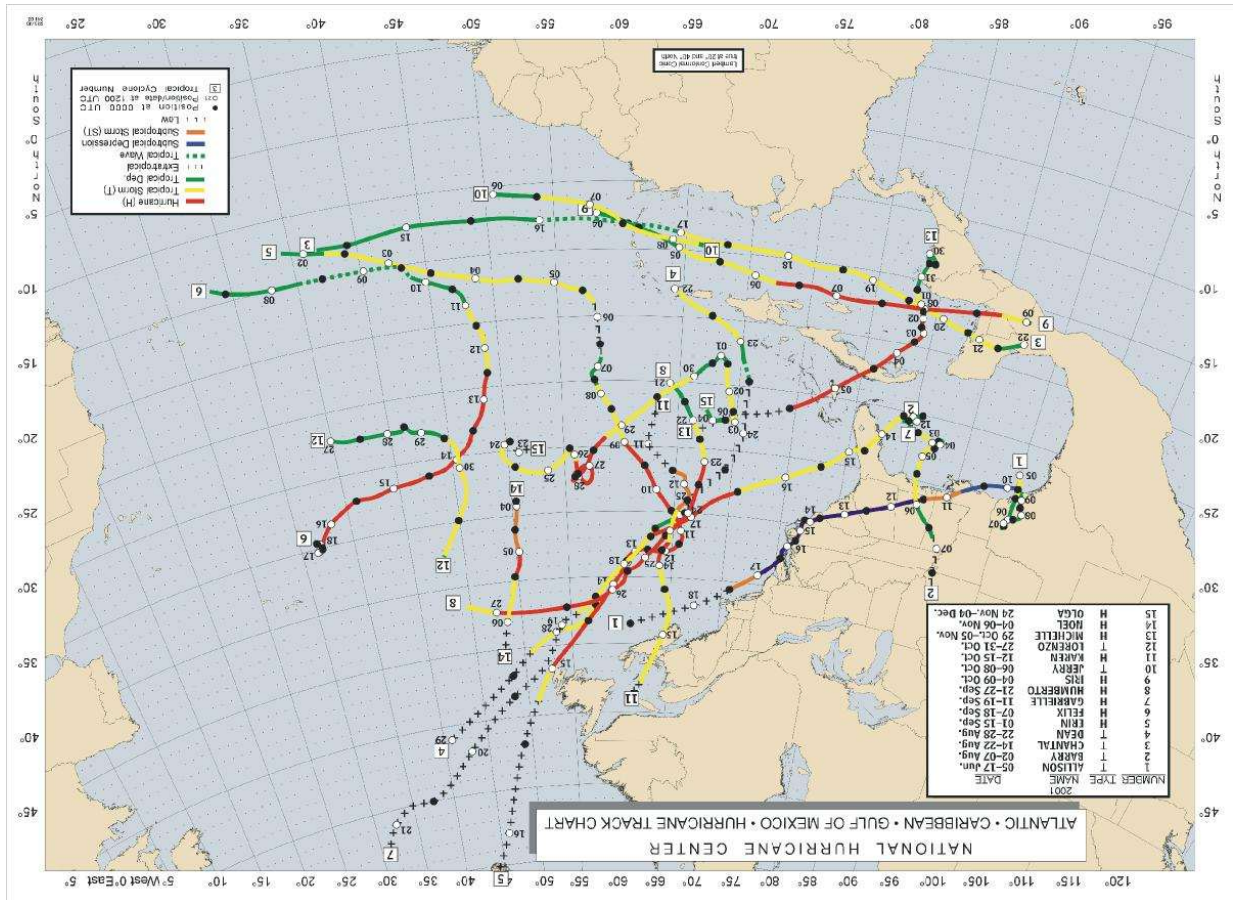
ARTHUR

ATLANTIC HURRICANE NAMES



National Hurricane Center

SOUTHEAST LOUISIANA HURRICANE TASK FORCE



THE 2001 ATLANTIC HURRICANE SEASON



NOAA P-3 Orion Hurricane Research Aircraft



EYEWALL

NWS NEW ORLEANS/BATON ROUGE



GULF COAST HURRICANE TOUR

THURSDAY
MAY 9, 2002



S.E. LOUISIANA HURRICANE
TASK FORCE MEETING



NEW ORLEANS
LAKEFRONT AIRPORT

**NOAA GULF COAST
HURRICANE AWARENESS TOUR
NEW ORLEANS LAKEFRONT AIRPORT
THURSDAY, MAY 9, 2002**

**SOUTHEAST HURRICANE TASK FORCE SPECIAL
MEETING AND PRESS BRIEFING**

General Activities

- 9:30 am NOAA P-3 Orion Arrives at Lakefront Airport
- 10:00 am Southeast Louisiana Hurricane Task Force - Special Meeting and Press Briefing Walnut Room - Lakefront Airport Keynote Speaker - Max Mayfield, NHC Director -
- 11:15 am Meeting Attendees Tour NOAA P-3 Orion Aircraft
- 12:30 - 2:30 pm Invited Schools Tour Aircraft Exhibit Area
- 2:30 - 4:30 pm NOAA P-3 Orion Aircraft Area and Exhibit Area Open to General Public
- 5:00 pm Exhibit Closes



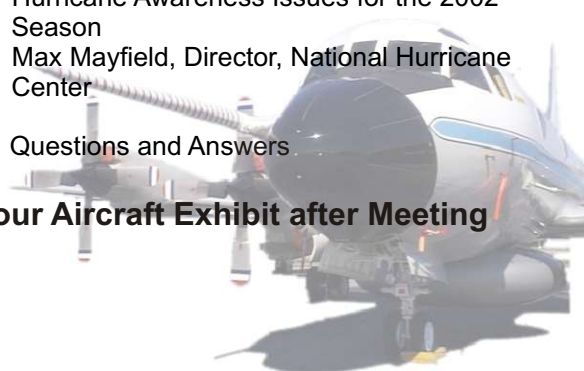
A 16 paged PDF format brochure of Hurricanes...Unleashing Nature's Fury can be downloaded from the WFO New Orleans/Baton Rouge website at <http://www.srh.noaa/lix>.

Program

- 10:00 am Introductions
Paul Trotter - Meteorologist in Charge, National Weather Service, Weather Forecast Office, Slidell, LA

John Boudreaux - Director, Assumption Parish Office of Emergency Preparedness and Chairman, Southeast Louisiana Hurricane Task Force Chairman
- 10:10 am Hurricane Preparedness
Cedric Grant, City of New Orleans Chief Administrative Officer
- 10:20 am State Hurricane Preparedness Initiatives for 2002
Col. Mike Brown, Assistant Director Louisiana Office of Emergency Preparedness
- 10:30 am Hurricane Preparedness
Bill Proenza, Director, Southern Region, National Weather Service
- 10:40 am Hurricane Awareness Issues for the 2002 Season
Max Mayfield, Director, National Hurricane Center
- 11:10 am Questions and Answers

Tour Aircraft Exhibit after Meeting



CONTACTS AND INTERNET ADDRESSES

**NATIONAL WEATHER SERVICE
DEPARTMENT OF COMMERCE**

NWS - WFO New Orleans/Baton Rouge
62300 Airport Road, Slidell, LA 70460-5243
(504) 522-7330
<http://www.srh.noaa.gov/LIX>

NWS - WFO Lake Charles
500 Airport Blvd. #115, Lake Charles, LA 70607
(318) 477-5285
<http://www.srh.noaa.gov/LCH>

NWS - WFO Mobile, Alabama
8400 Airport Blvd., Mobile, AL 36608
(334) 633-6443
<http://www.srh.noaa.gov/MOB>

NWS Southern Region Headquarters
819 Taylor Street, Fort Worth, TX 76109
<http://www.srh.noaa.gov>

NOAA - National Data Buoy Center
<http://www.ndbc.noaa.gov>

NWS- Lower Mississippi River Forecast Center
62300 Airport Road, Slidell, LA 70460-5243
<http://www.srh.noaa.gov/orn>

State Agencies

State of Louisiana Office of Emergency Preparedness
www.lope.state.la.us

CONTACTS AND INTERNET ADDRESSES

Tropical Prediction/National Hurricane Center
11691 S.W. 17th Street, Miami, FL 33165-2149
www.nhc.noaa.gov

Storm Prediction Center
www.spc.noaa.gov

American Red Cross
www.redcross.org

Federal Emergency Management Agency
www.fema.gov/fema/trop.html

TERM TO KNOW

TROPICAL STORM WATCH: Tropical storm conditions with sustained winds of 39 mph to 73 mph are possible in the specified area of the watch within 36 hours.

TROPICAL STORM WARNING: Tropical storm conditions are expected in the specified area of the warning within 24 hours.

HURRICANE WATCH: Hurricane conditions with sustained winds of 74 mph or greater are possible in the specified area of the watch within 36 hours. During a hurricane watch, prepare to take immediate action to protect your family and property in case a hurricane warning is issued.

HURRICANE WARNING: Hurricane conditions are expected in the specified area of the warning within 24 hours. Complete all storm preparations and evacuate, if directed by local officials.

SHORT TERM WATCHES AND WARNINGS: These provide detailed information on specific hurricane related threats such as tornadoes, floods, and high winds.