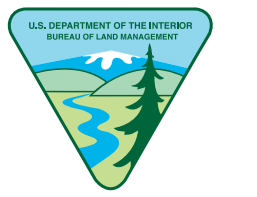
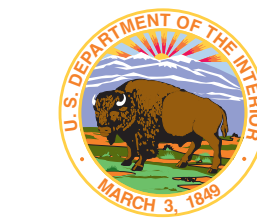


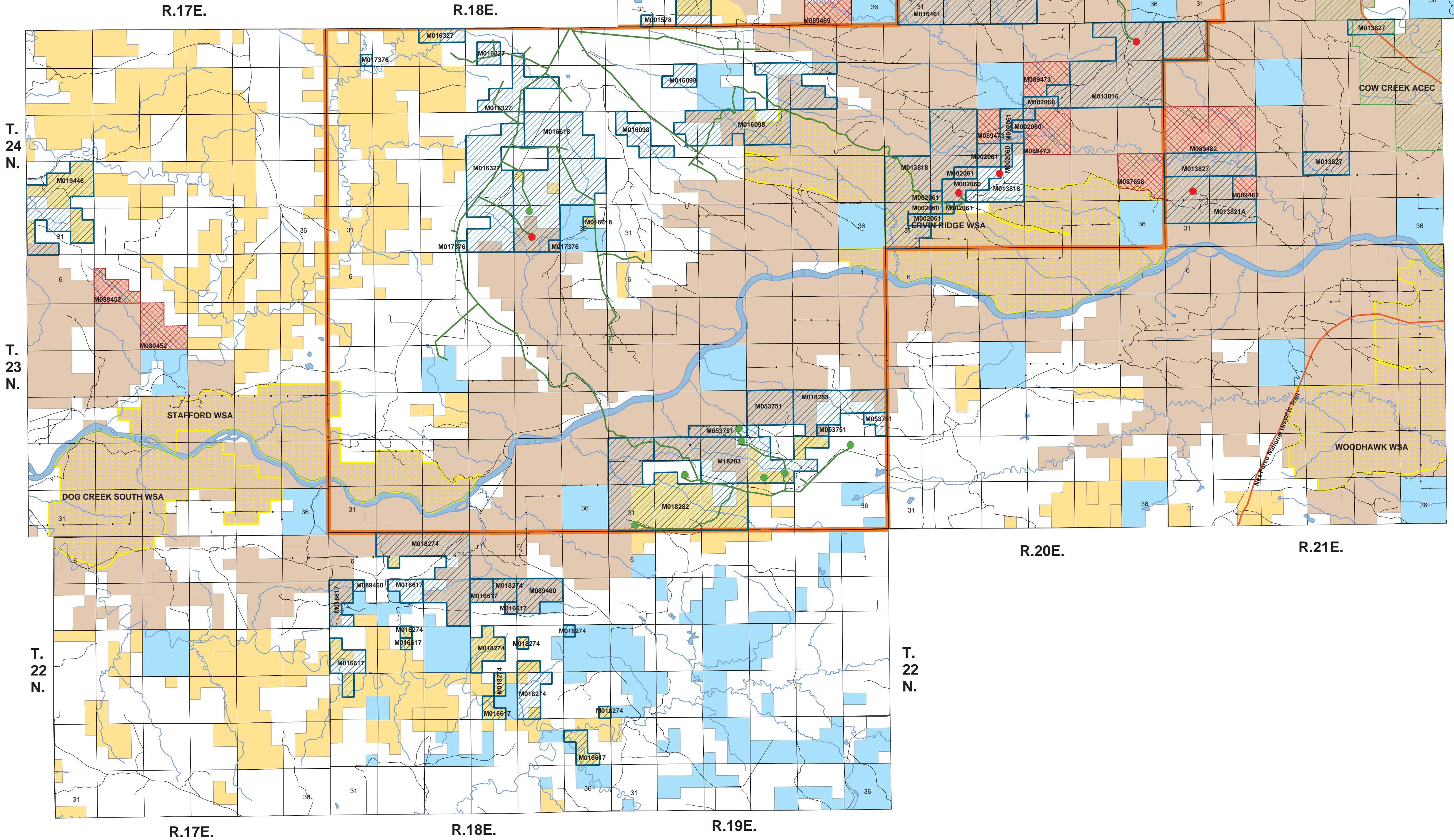
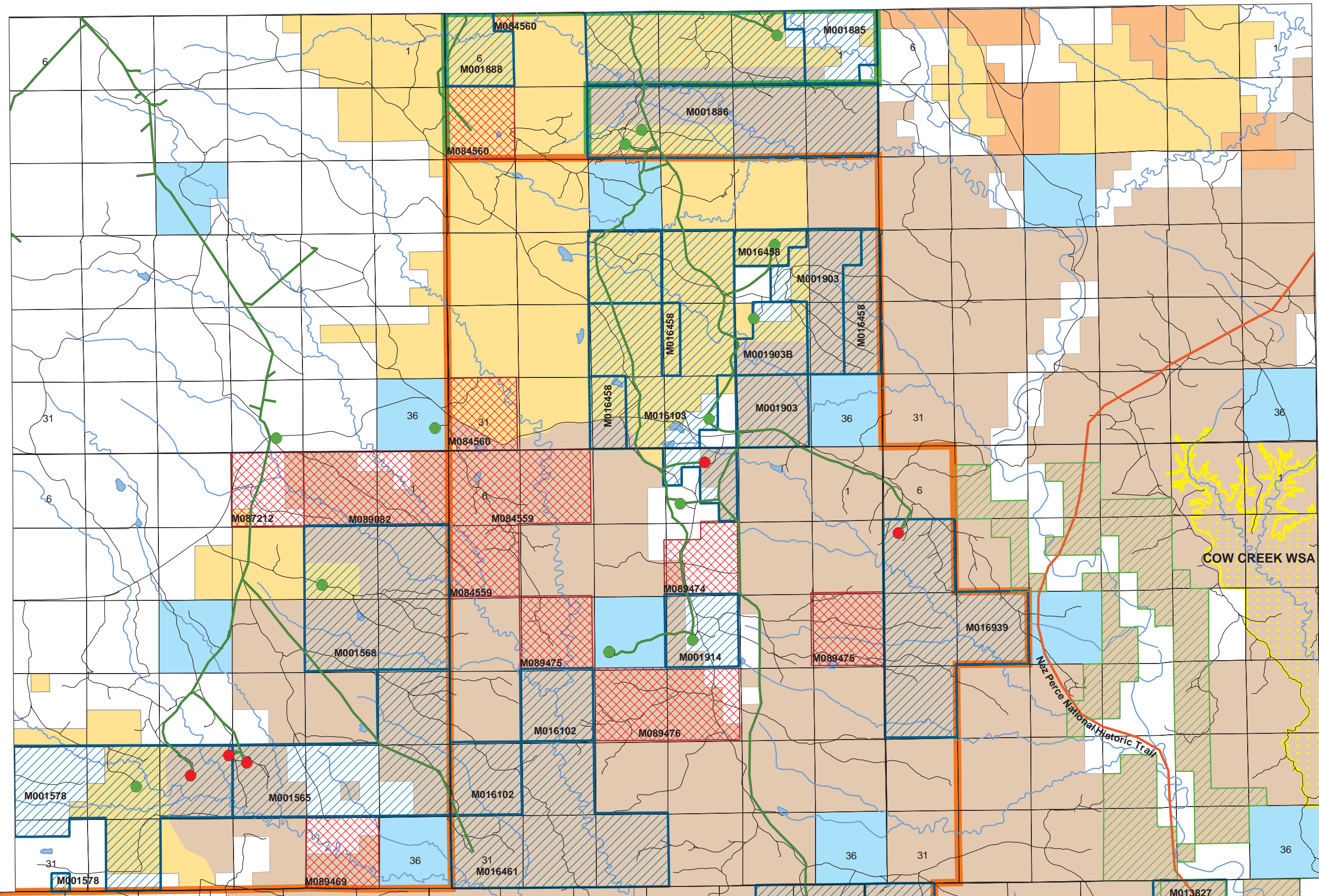
UPPER MISSOURI RIVER BREAKS NATIONAL MONUMENT

Approved Resource Management Plan

Map 3 - Side A Oil and Gas Map



Oil and Gas Leases in the Monument								
MTM Lease No.	Lease Effective Date	Specific Resource Stipulations	Legal Description		Lease Status - Actual, Allocated or No Production	Lease Acreage in the Monument	Lease Acreage outside the Monument	Total Lease Acreage
			Township and Range	Section(s)				
West HiLine Leases								
084359	November 1, 1995	Yes	T25N R20E	5, 6, 7	No Production	1,880	0	1,880
084560	November 1, 1995	Yes	T26N R20E	5, 6, 7, 31	No Production	134	1,119	1,253
087212	September 1, 1997	Yes	T25N R19E	3	No Production	122	528	650
087658	February 1, 1998	Yes	T24N R20E	25	No Production	485	0	485
089082	May 1, 1999	Yes	T25N R19E	1, 2	No Production	1,131	167	1,298
089452	November 1, 1999	Yes	T25N R17E	1, 5, 9	No Production	800	0	800
089469	November 1, 1999	Yes	T25N R19E	35	No Production	640	0	640
089473	November 1, 1999	Yes	T24N R20E	15, 21, 22	No Production	1,240	0	1,240
089474	November 1, 1999	Yes	T25N R20E	10	No Production	80	480	560
089475	November 1, 1999	Yes	T25N R20E	13, 17	No Production	1,280	0	1,280
089476	December 1, 1999	Yes	T25N R20E	21, 22	No Production	1,120	160	1,280
089482	November 1, 1999	Yes	T24N R21E	19, 20, 29	No Production	1,416	0	1,416
West HiLine Leases Subtotal						10,328	2,454	12,782
Non-West HiLine Leases								
1565	May 1, 1967	None	T25N R19E	24, 25, 26, 27	Actual/Allocated	2,560	0	2,560
1568	May 1, 1967	None	T25N R19E	11, 12, 13, 14	Actual	2,320	240	2,560
1578	May 1, 1967	None	T25N R19E	28, 29, 30, 31, 32	Actual/Allocated	575	1,988	2,563
1885	June 1, 1967	None	T26N R20E	1, 2	Allocated	40	611	651
1886	June 1, 1967	None	T26N R20E	9, 10, 11, 12	Actual	1,920	640	2,560
1888	June 1, 1967	None	T26N R20E	2, 3, 4, 6	Actual	480	1,082	1,562
1903	June 1, 1967	None	T26N R20E	23, 24, 25, 35	Allocated	1,360	200	1,560
1903-B	June 1, 1967	None	T26N R20E	26	Actual	320	240	560
1914	June 1, 1967	None	T25N R20E	15	Actual	200	440	640
2060	July 1, 1967	None	T24N R20E	15, 21, 22, 28, 29, 32	Actual	640	0	640
2061	July 1, 1967	None	T24N R20E	21, 28, 29, 31, 32	Allocated	640	0	640
13816	November 1, 1969	None	T24N R20E	11, 12, 13, 14, 15	Actual	2,533	0	2,533
13818	November 1, 1969	None	T24N R21E	7	Allocated	2,532	0	2,532
13821-A	November 1, 1969	None	T24N R21E	29, 30, 31, 32	Actual	1,099	0	1,099
13827	November 1, 1969	None	T24N R21E	11, 27, 29, 30	Allocated	1,156	0	1,156
16098	September 1, 1970	None	T24N R19E	14, 15, 17, 19, 20, 21, 22	Actual	1,240	1,280	2,520
16102	September 1, 1970	None	T24N R20E	3, 20, 30	Actual/Allocated	1,506	163	1,669
16103	September 1, 1970	None	T26N R20E	22, 27, 28, 33, 34	Actual	13	2,507	2,520
16327	October 1, 1970	None	T24N R18E	9, 10, 11, 14, 15, 22, 23, 27, 34	Actual/Allocated	80	2,338	2,418
16458	October 1, 1970	None	T26N R20E	21, 23, 24, 25, 27, 33	Actual	488	1,272	1,960
16461	October 1, 1970	None	T24N R20E	29, 31, 32, 33	Actual	2,547	0	2,547
16617	November 1, 1970	None	T22N R18E	7, 8, 10, 17, 18, 19, 22, 25	Allocated	490	929	1,419
16618	November 1, 1970	None	T24N R18E	23, 24, 25, 26, 35, 36	Actual/Allocated	320	2,240	2,560
16939	December 1, 1970	None	T25N R21E	7, 17, 18, 19	Actual	2,530	0	2,530
17376	February 1, 1971	None	T24N R18E	7, 33, 35	Allocated	40	80	120
18274	July 1, 1971	Some	T22N R18E	4, 5, 9, 10, 13, 14, 15, 17, 22, 24, 25	Allocated	1,367	1,160	2,527
18282	May 1, 1973	Some	T23N R19E	29, 30, 31, 32, 33	Actual	851	1,680	2,531
18283	May 1, 1973	Some	T23N R19E	22, 23, 24, 26, 27, 28, 29	Actual/Allocated	1,240	1,320	2,560
19446	September 1, 1971	None	T24N R17E	30, 31	Actual	110	1,113	1,223
33751	June 1, 1982	Yes	T23N R19E	20, 21, 22, 23, 24	Actual	680	160	840
89460	November 1, 1999	Yes	T22N R18E	7, 11	No Production	400	440	840
Non-West HiLine Leases Subtotal						32,477	22,643	55,120
Total						42,805	25,097	67,902



T. 26 N.
T. 25 N.
T. 24 N.
T. 23 N.
T. 22 N.

Legend

- Wild & Scenic River Boundary
- Area of Critical Environmental Concern
- Wilderness Study Area
- Nez Perce National Historic Trail

Surface Ownership:

- National Monument (BLM)
- Other BLM
- Indian Land or Reservation
- State
- Private

The BLM has no jurisdiction over private or state land and minerals, and these lands and minerals are not part of the Monument. Landowner permission is required for access to private property.

Natural Gas Fields/Leases

- Sawtooth Mountain Gas Field
- Leroy Gas Field
- Natural Gas Pipeline
- Active Wells in the Monument
- Active Wells 1/2 mile outside the Monument
- West HiLine Leases
- Non-West HiLine Leases



Disclaimer

Base data derived from USGS digital and mylar 1:100,000 scale maps. No warranty is made by the Bureau of Land Management (BLM) for use of the data for purposes not intended by BLM.

Generated by the Lewistown Field Office - November 2008.

The map projection is in Albers; the data is in NAD 27; and the units are in meters.

