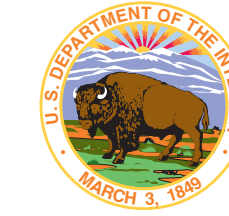


UPPER MISSOURI RIVER BREAKS NATIONAL MONUMENT

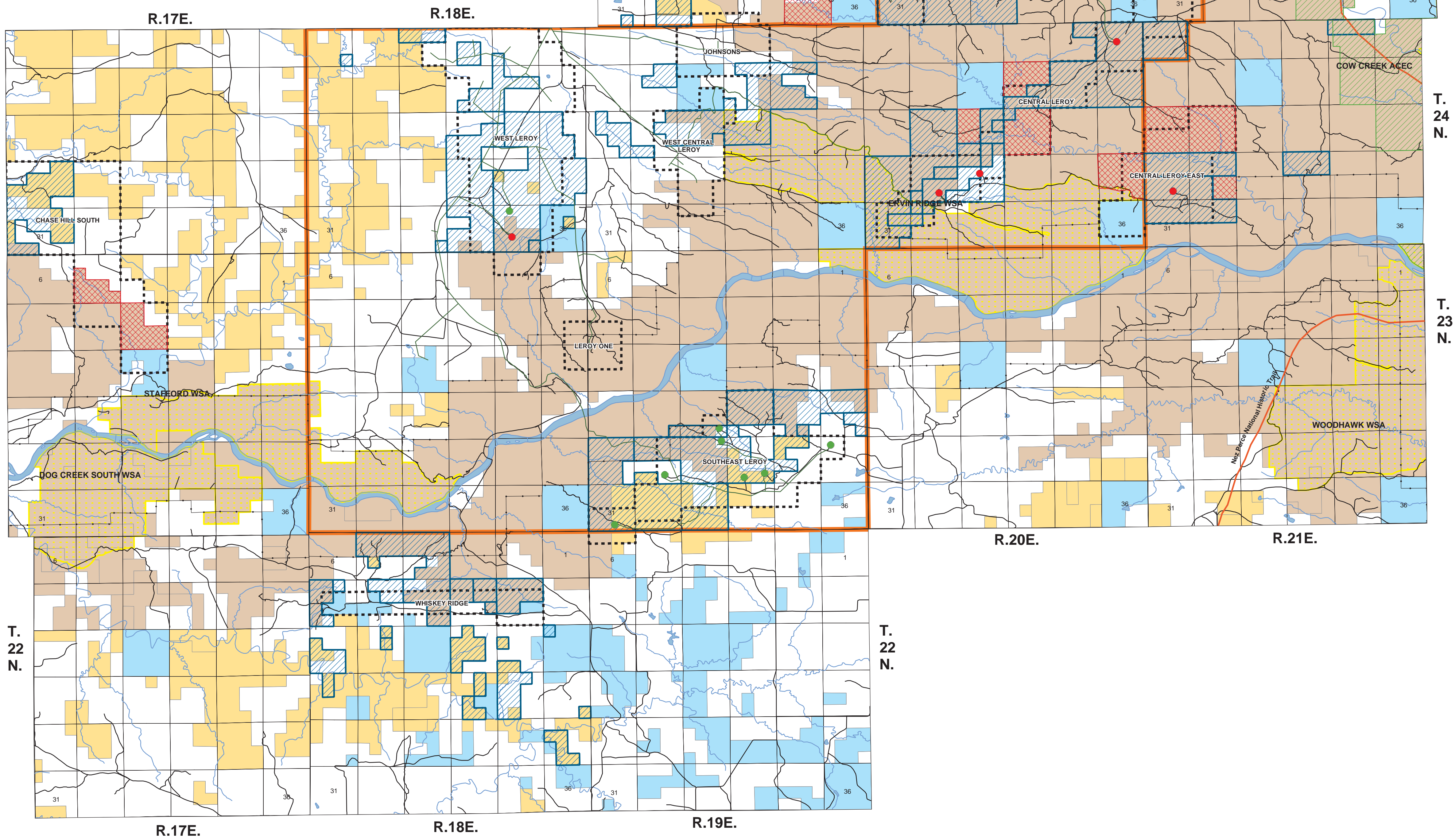
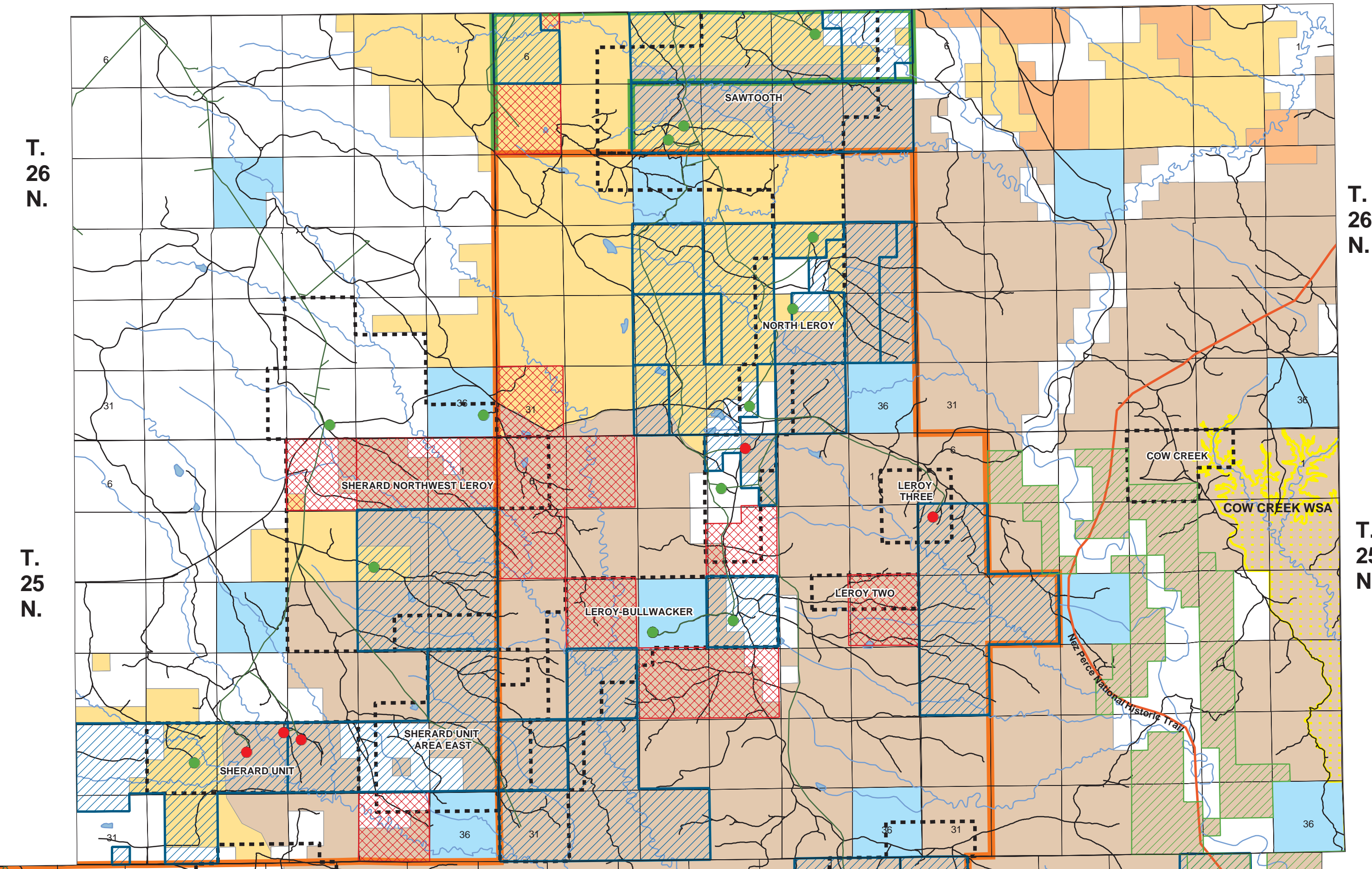
Approved Resource Management Plan

Map 3 - Side B Reasonable Foreseeable Development



Reasonable Foreseeable Development (RFD) Wells by Exploration/Development Area			
Exploration/Development Area	Monument RFD Wells	Other RFD Wells ¹	Total Other
Central Leroy	4	0	4
Central Leroy East	1	0	1
Chase Hill South	2	0	2
Leroy Bullwacker	6	0	6
North Leroy	1	3	4
Sherard Northwest Leroy	7	5	12
Sherard Unit	5	1	6
Sherard Unit Area East	7	0	7
Sawtooth	0	11	11
Southeast Leroy	1	0	1
West Leroy	0	1	1
Total Wells in the 11 Areas	34	21	55

¹RFD wells within 1/2 mile of the Monument



Legend

- Wild & Scenic River Boundary
- Area of Critical Environmental Concern
- Wilderness Study Area
- Nez Perce National Historic Trail

Surface Ownership:

- National Monument (BLM)
- Other BLM
- Indian Land or Reservation
- State
- Private

The BLM has no jurisdiction over private or state land and minerals, and these lands and minerals are not part of the Monument. Landowner permission is required for access to private property.

Natural Gas Exploration and Development

- Sawtooth Mountain Gas Field
- Leroy Gas Field
- Natural Gas Pipeline
- Active Wells in the Monument
- Active Wells 1/2 mile outside the Monument
- West HiLine Leases
- Non-West HiLine Leases
- Exploration/Development Areas



Disclaimer
 Base data derived from USGS digital and mylar 1:100,000 scale maps. No warranty is made by the Bureau of Land Management (BLM) for use of the data for purposes not intended by BLM.
 Generated by the Lewistown Field Office - November 2008.
 The map projection is in Albers; the data is in NAD 27; and the units are in meters.

