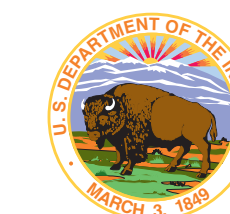


UPPER MISSOURI RIVER BREAKS NATIONAL MONUMENT

Approved Resource Management Plan

Map 2 - Side B East Half Recreation Map



Legend

- Wild & Scenic River Boundary
 - Area of Critical Environmental Concern
 - Wilderness Study Area
 - County Boundary
- SURFACE OWNERSHIP:**
- National Monument (BLM)
 - Other BLM
 - Indian Land or Reservation
 - U.S. Fish and Wildlife Service
 - State
 - Private
- The BLM has no jurisdiction over private or state land and minerals, and these lands and minerals are not part of the Monument. Landowner permission is required for access to private property.
- Missouri Breaks Back Country Byway
 - Nez Perce National Historic Trail
 - Potential Cultural Interpretive Sites
 - Potential Geological Interpretive Sites

- Level 1 - Developed Public Access Sites
- Level 2 - Developed Upland Sites or Boat Camps
- Level 3 - Primitive Campsites or Boat Camps

River Recreation Facilities

Level 1 - Developed public access sites are accessible by road and have a full range of developments that could include parking lots, boat ramps, vault toilets, campsites for tents and RVs, and picnic facilities.

Level 2 - Developed boat camps are accessible only by boat. The sites could include vault toilets, metal fire rings, and occasionally, open-air shelters.

Level 3 - Primitive boat camps are accessible only by boat and could contain a metal fire ring but no other developments.

Level 4 - Dispersed camping opportunities. In addition to the developed sites described above, camping is permissible on any of the 30,000 acres of BLM land adjacent to the river. The absence of development allows opportunities for those seeking a completely primitive experience. In many areas private land is intermingled with BLM land and landowner permission is required to access or cross private land.

Upland Recreation Facilities

Level 1 - Developed public access sites are recreation sites where a high level of development could include campsites, parking lots, vault toilets, interpretive signs, campground host facilities, tree plantings, picnic tables, waste facilities and other infrastructure improvements that accommodate the transition from highway to collector roads.

Level 2 - Developed upland sites are campsites, trailheads, scenic overlooks and reservoirs where moderate levels of development could include metal fire rings, vault toilets, and improved gravel parking areas. Interpretive signs and information boards may be present but much less obtrusive than at Level 1 sites and would blend well with natural surroundings.

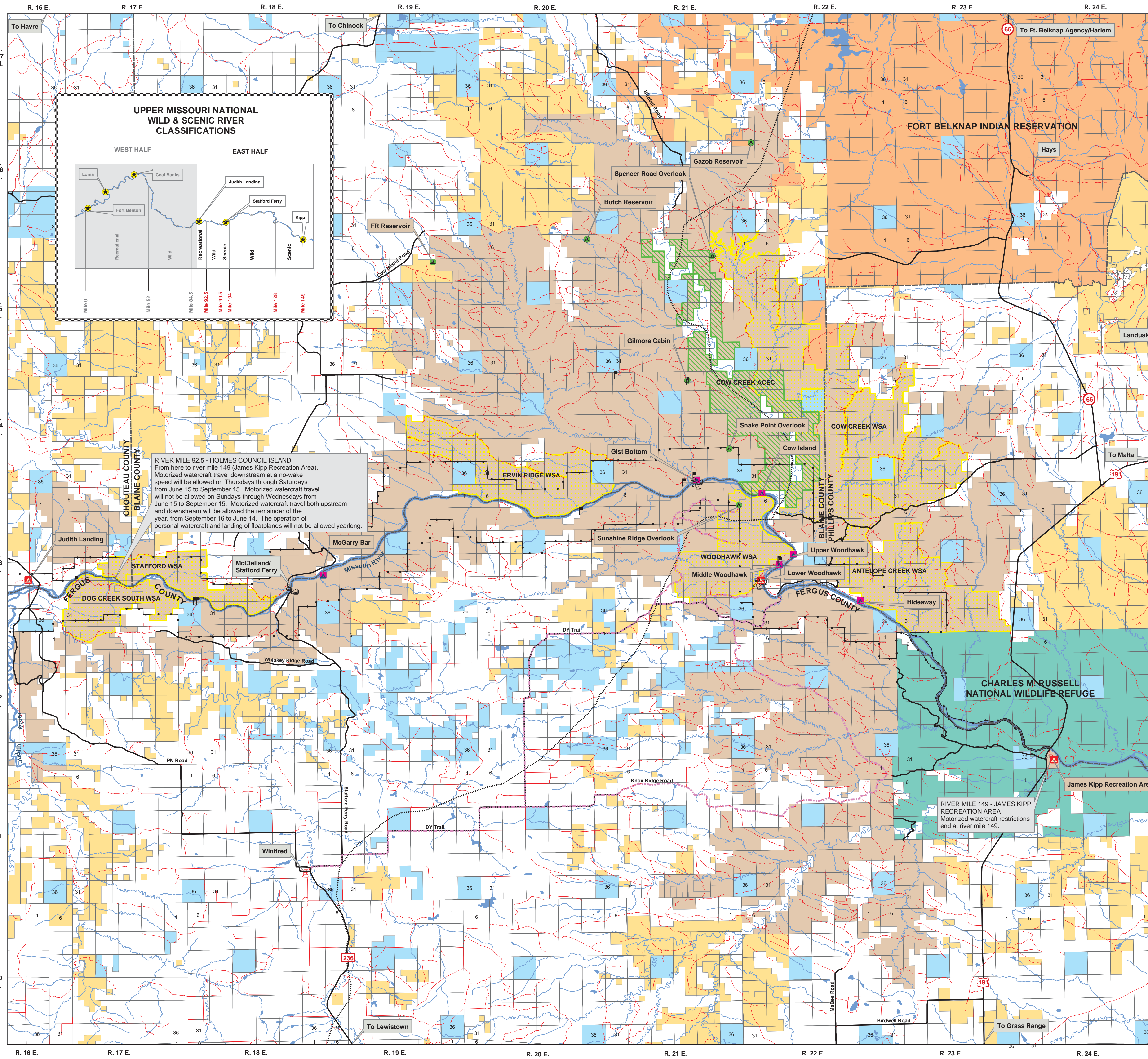
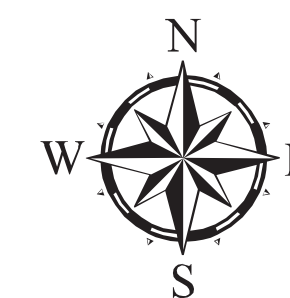
Level 3 - Primitive campsites are pull-out sites immediately adjacent to a road. They may contain a fire ring but no other development.

Level 4 - Dispersed camping opportunities. Public land in a natural state with no development present may be used for dispersed camping. These areas may be accessible by motorized or non-motorized travel.



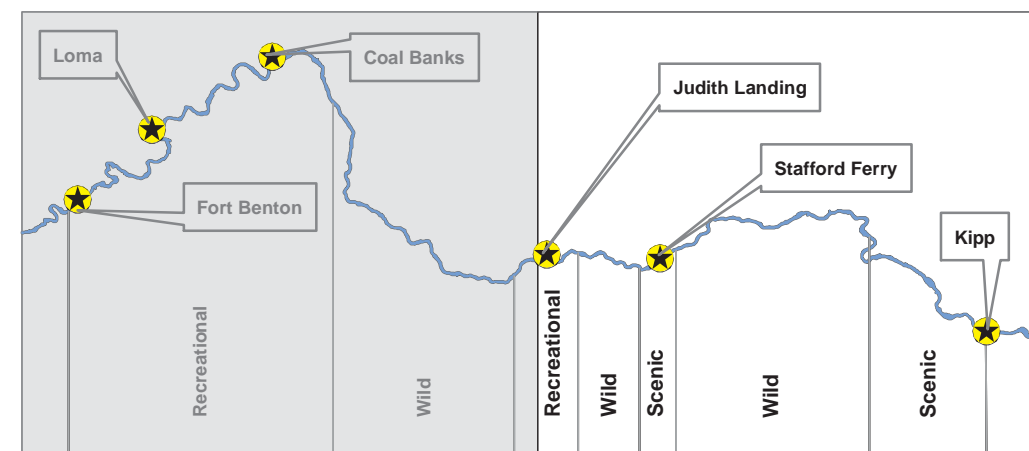
Disclaimer

Base data derived from USGS digital and vector 1:100,000 scale maps. No warranty is made by the Bureau of Land Management (BLM) for use of the data for purposes not intended by BLM. Generated by the Lewistown Field Office - November 2006. The map projection is in Albers; the data is in NAD 27; and the units are in meters.



UPPER MISSOURI NATIONAL WILD & SCENIC RIVER CLASSIFICATIONS

WEST HALF EAST HALF



RIVER MILE 92.5 - HOLMES COUNCIL ISLAND
From here to river mile 149 (James Kipp Recreation Area). Motorized watercraft travel downstream at a no-wake speed will be allowed on Thursdays through Saturdays from June 15 to September 15. Motorized watercraft travel will not be allowed on Sundays through Wednesdays from June 15 to September 15. Motorized watercraft travel both upstream and downstream will be allowed the remainder of the year, from September 16 to June 14. The operation of personal watercraft and landing of floatplanes will not be allowed yearlong.

RIVER MILE 149 - JAMES KIPP RECREATION AREA
Motorized watercraft restrictions end at river mile 149.