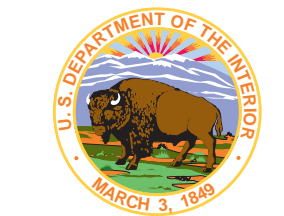


UPPER MISSOURI RIVER BREAKS NATIONAL MONUMENT

Approved Resource Management Plan

Map 2 - Side A
West Half Recreation Map



Legend

- Wild & Scenic River Boundary
- Wilderness Study Area
- County Boundary

SURFACE OWNERSHIP:

- National Monument (BLM)
- Other BLM
- U.S. Forest Service
- U.S. Fish and Wildlife Service
- State
- Private

The BLM has no jurisdiction over private or state land and minerals, and these lands and minerals are not part of the Monument. Landowner permission is required for access to private property.

- Potential Geological Interpretive Sites

- Level 1 - Developed Public Access Sites
- Level 2 - Developed Upland Sites or Boat Camps
- Level 3 - Primitive Campsites or Boat Camps

River Recreation Facilities

Level 1 - Developed public access sites are accessible by road and have a full range of developments that could include parking lots, boat ramps, vault toilets, campsites for tents and RVs, and picnic facilities.

Level 2 - Developed boat camps are accessible only by boat. The sites could include vault toilets, metal fire rings, and occasionally, open-air shelters.

Level 3 - Primitive boat camps are accessible only by boat and could contain a metal fire ring but no other developments.

Level 4 - Dispersed camping opportunities. In addition to the developed sites described above, camping is permissible on any of the 90,000 acres of BLM land adjacent to the river. The absence of development allows opportunities for those seeking a completely primitive experience. In many areas private land is intermingled with BLM land and landowner permission is required to access or cross private land.

Upland Recreation Facilities

Level 1 - Developed public access sites are recreation sites where a high level of development could include campsites, parking lots, vault toilets, interpretive signs, campground facilities, tree plantings, picnic tables, waste facilities and other infrastructure improvements that accommodate the transition from highway to collector roads.

Level 2 - Developed upland sites are campsites, trailheads, scenic overlooks and reservoirs where moderate levels of development could include metal fire rings, vault toilets, and improved gravel parking areas. Interpretive signs and information boards may be present but much less obtrusive than at Level 1 sites and would blend well with natural surroundings.

Level 3 - Primitive campsites are pull-out sites immediately adjacent to a road. They may contain a fire ring but no other development.

Level 4 - Dispersed camping opportunities. Public land in a natural state with no development present may be used for dispersed camping. These areas may be accessible by motorized or non-motorized travel.

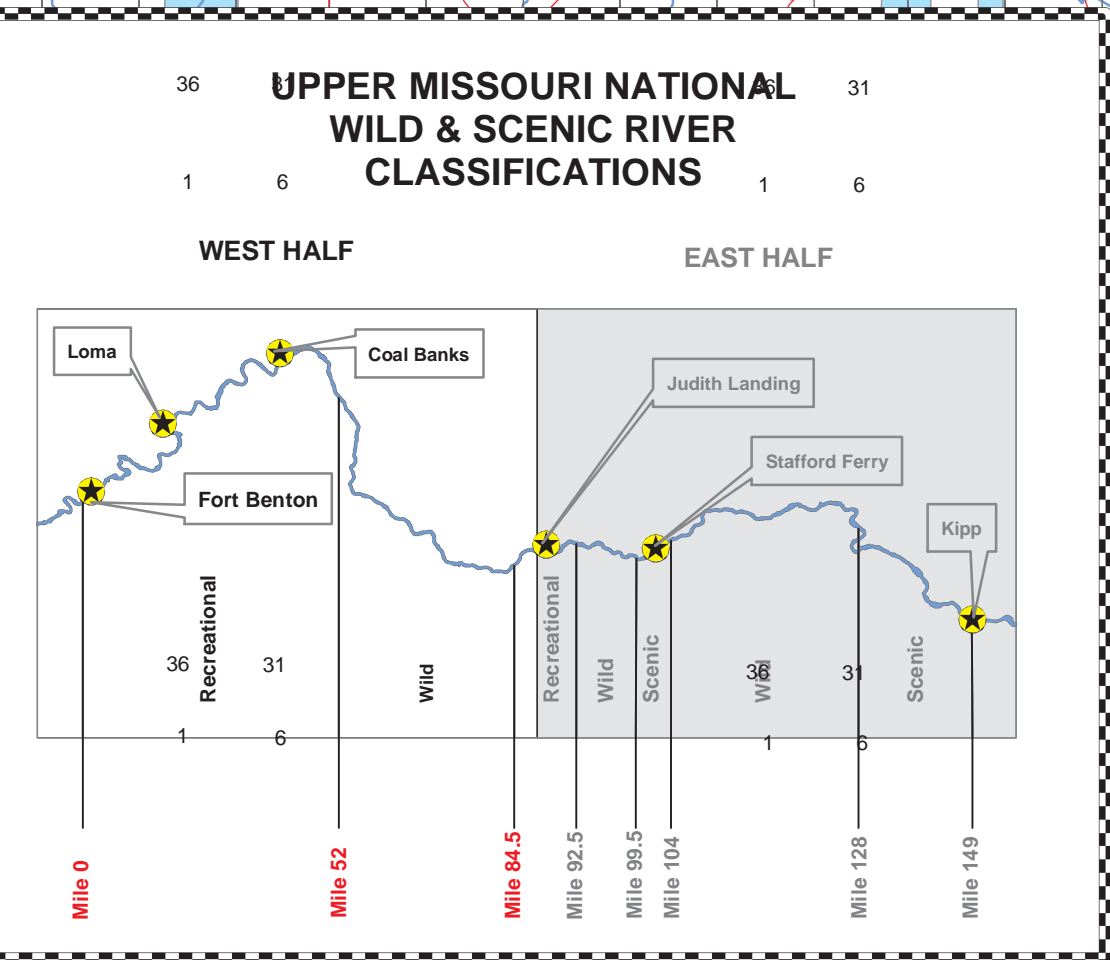
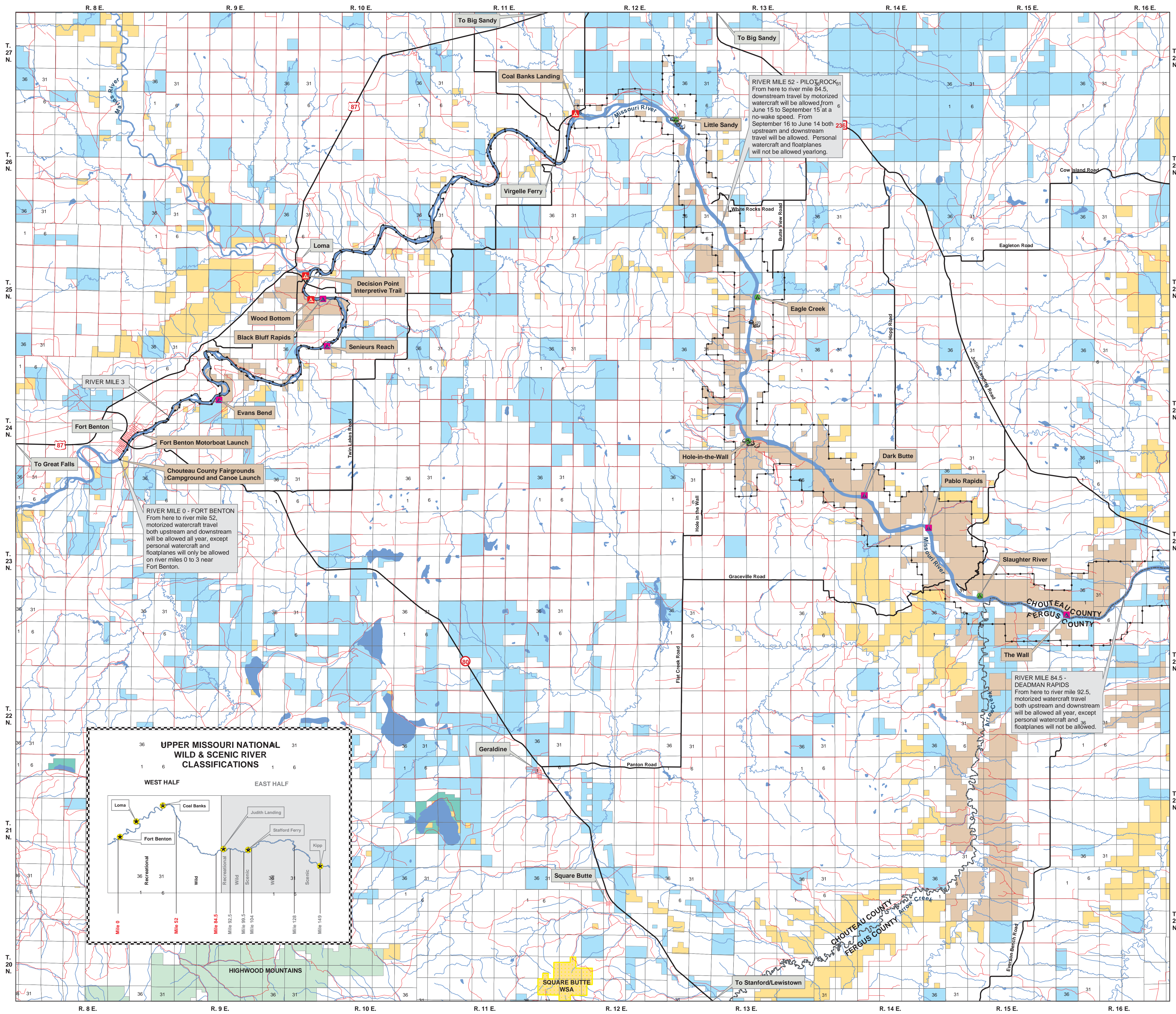
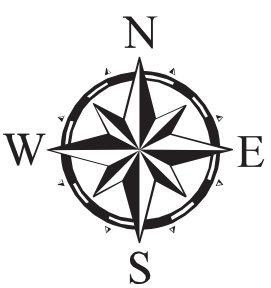


Disclaimer

Base data derived from USGS digital and vector 1:100,000 scale maps. No warranty is made by the Bureau of Land Management (BLM) for use of the data for purposes not intended by BLM.

Generated by the Lewistown Field Office - November 2008.

The map projection is in Albers; the data is in NAD 27; and the units are in meters.



RIVER MILE 0 - FORT BENTON
From here to river mile 52, motorized watercraft travel both upstream and downstream will be allowed all year, except personal watercraft and floatplanes will only be allowed on river miles 0 to 3 near Fort Benton.

RIVER MILE 52 - PILO ROCK
From here to river mile 84.5, downstream travel by motorized watercraft will be allowed from June 15 to September 15 at a no-wake speed. From September 16 to June 14 both upstream and downstream travel will be allowed. Personal watercraft and floatplanes will not be allowed yearlong.

RIVER MILE 84.5 - DEADMAN RAPIDS
From here to river mile 92.5, motorized watercraft travel both upstream and downstream will be allowed all year, except personal watercraft and floatplanes will not be allowed.