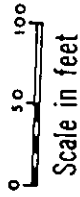


KEY to STAR FORT

- a. Commanding Officer's Office and Quarters
- b. Powder Magazine
- c. Officers' Quarters
- d. No. 1 Soldiers' Barracks
- e. No. 2 Soldiers' Barracks
- f. Guard Room (Casemate below)
- g. Guard Room (Casemate below)
- h. Sally Port (Vaulted Passage)
- i. Flag Pole
- j. Cistern Site
- k. Postern Door

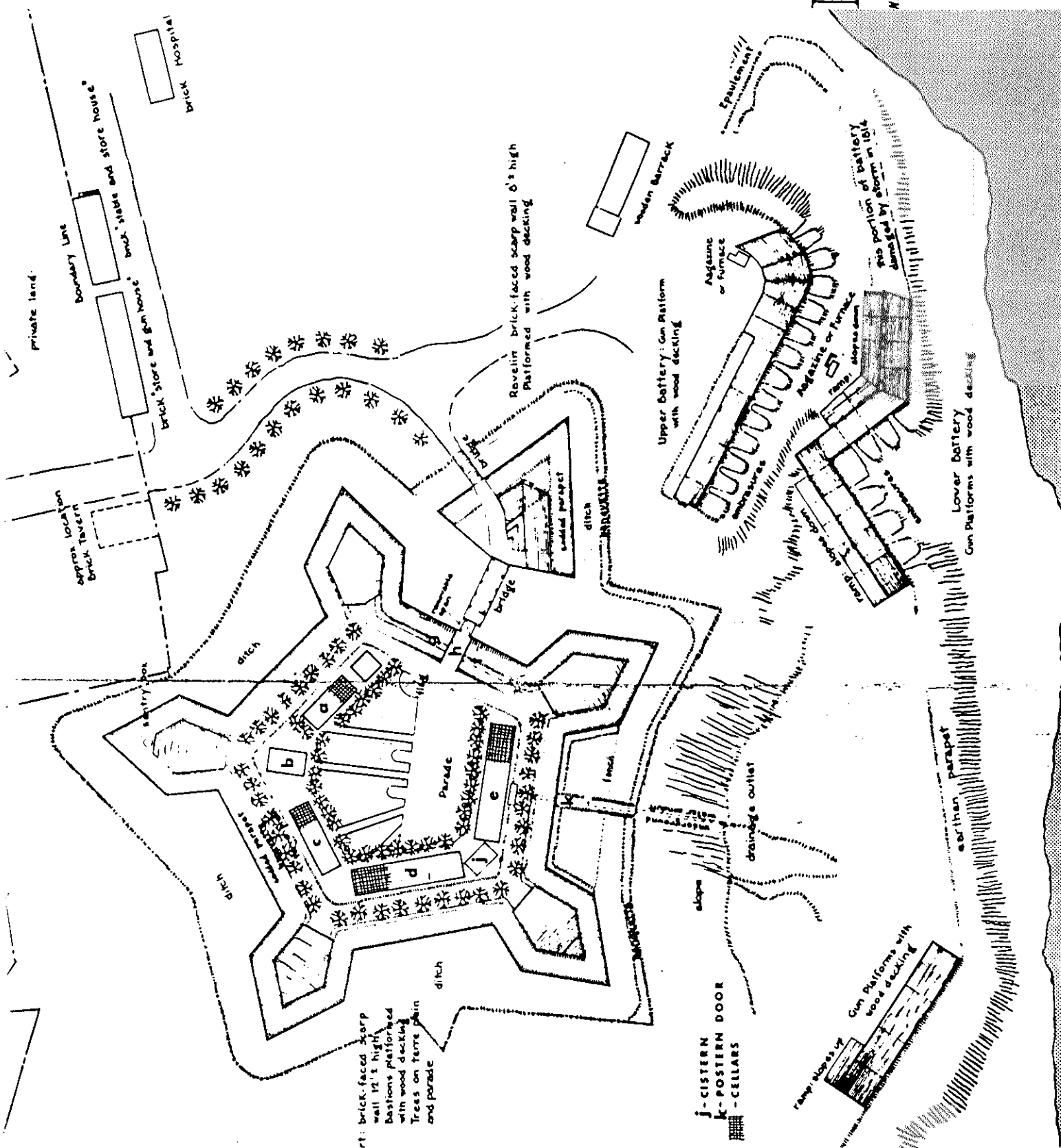


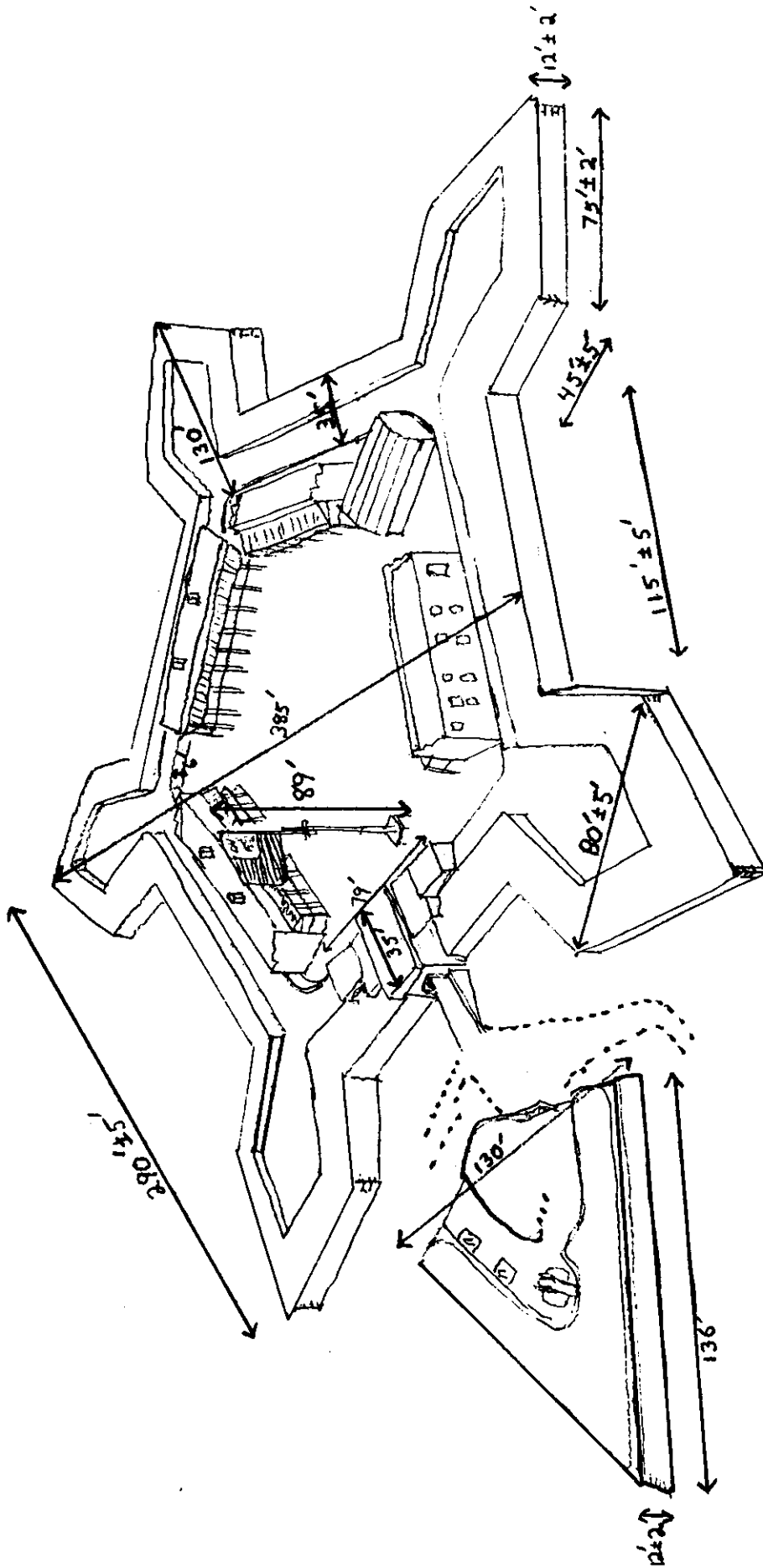
A MAP of Fort MCHENRY

National Monument & Historic Shrine

in

1814

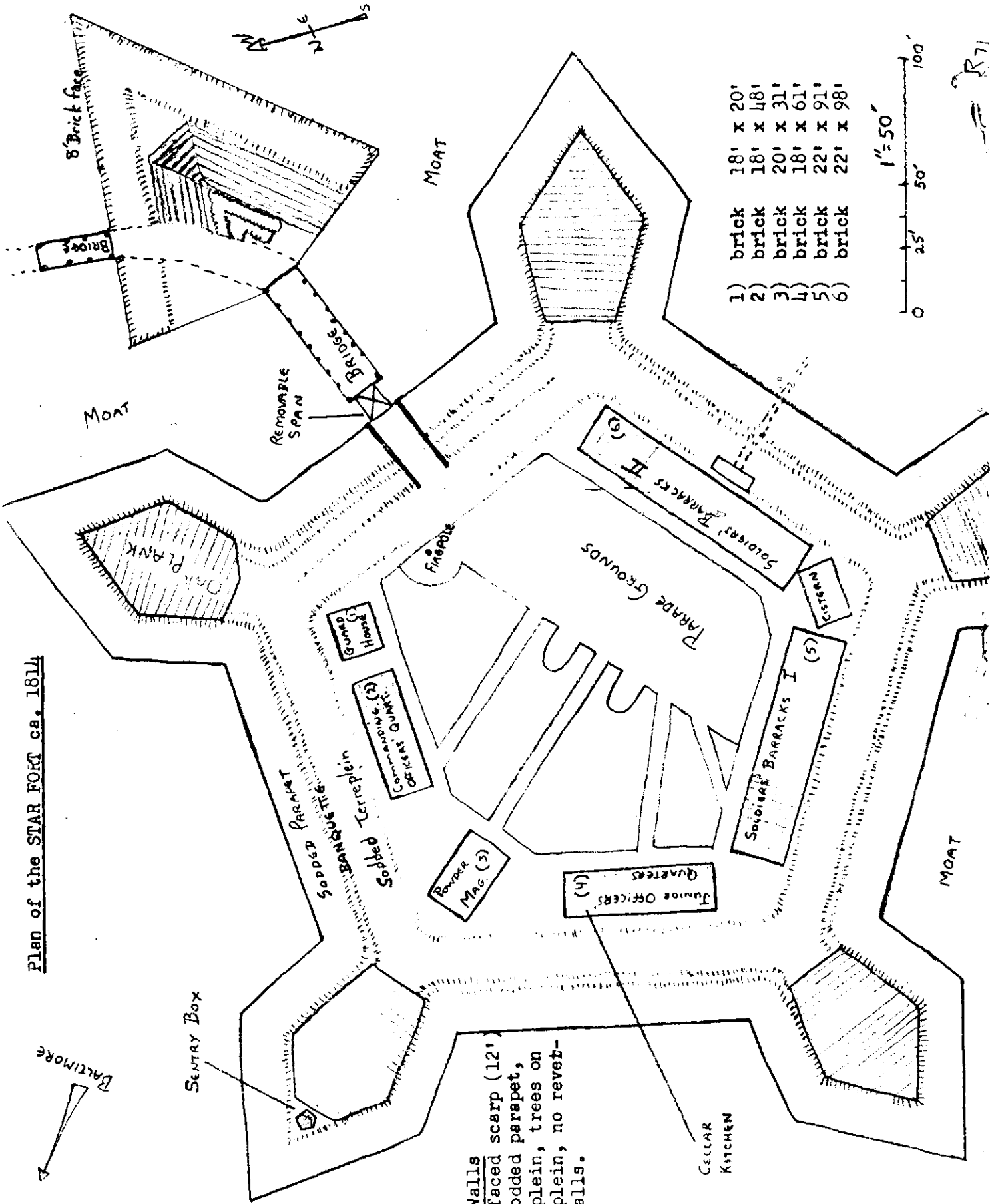




FORT MCHENRY TODAY

Wall Measurements

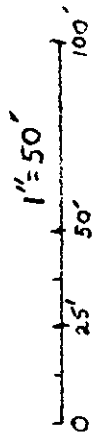
Plan of the STAR FORT ca. 1814



The walls
 Brick-faced scarp (12')
 with sodded parapet,
 terre plein, trees on
 terre plein, no reves-
 timent walls.

CELLAR
 KITCHEN

- 1) brick 18' x 20'
- 2) brick 18' x 48'
- 3) brick 20' x 31'
- 4) brick 18' x 61'
- 5) brick 22' x 91'
- 6) brick 22' x 98'



R71