

Figure 3-8. Colorado Plateaus Aquifers

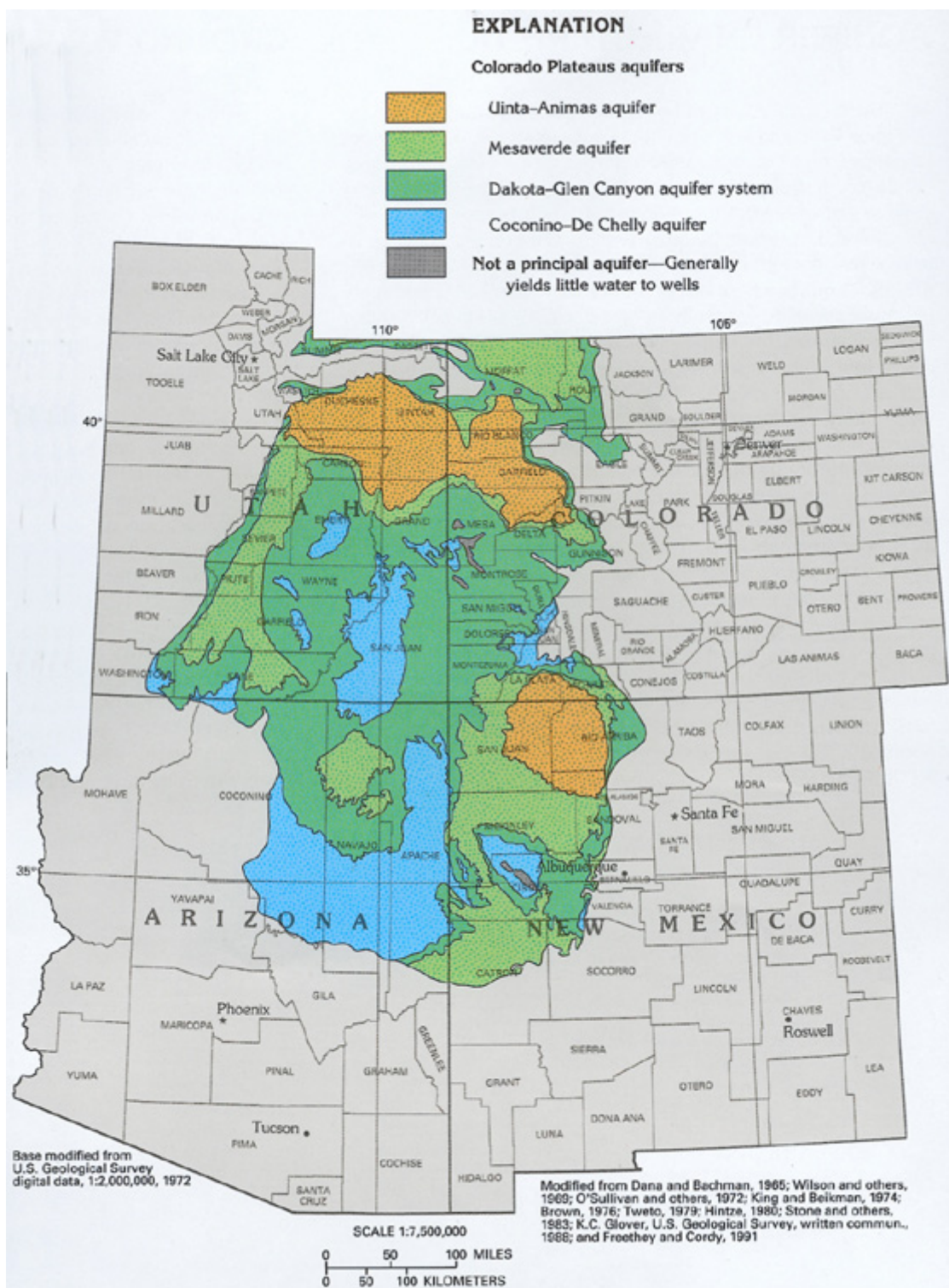


Figure 107. The Colorado Plateaus are underlain by four principal aquifers. The areas where each aquifer is the uppermost water-yielding unit are shown here.

Source: *Ground Water Atlas of the United States, Arizona, Colorado, New Mexico, Utah*, HA 730-C, U.S. Geological Survey, 1995.