

SCHIZOPHRENIA

Diagnosis:

Schizophrenia involves at least two of the following symptoms, each present for a significant portion of time during a one-month period.¹



Jumping from one subject to another and saying things that don't make sense



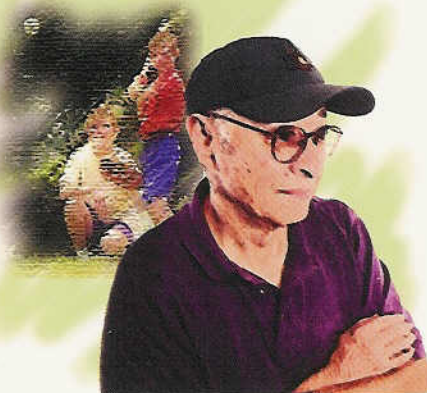
Seeing, hearing, or feeling things that are not real



False beliefs or thoughts that no one believes or understands; for example, believing others are always reading your mind, or controlling your thoughts



Unable to complete everyday tasks, such as getting dressed



No interest or feelings about anything

PEOPLE DO GET BETTER!

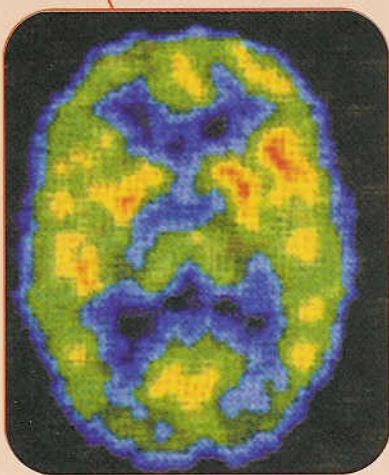


1. As defined by Diagnostic and Statistical Manual of Mental Disorders, Fourth Edition. Washington DC: American Psychiatric Association, 1994: 285-286

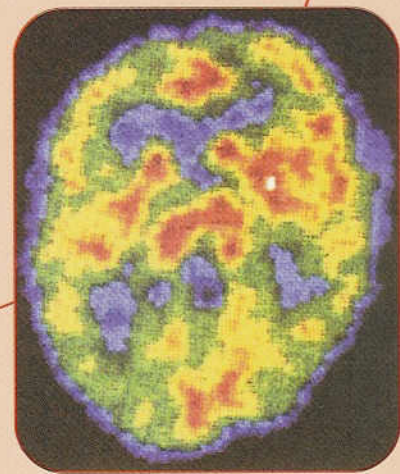
SCHIZOPHRENIA

Schizophrenia is a disorder, or group of disorders, that affects the chemical balance of the brain, and in some cases the structure of the brain.

Schizophrenia is a lifelong disorder. In some Asian cultures, mental health disorders can be attributed to an imbalance within the human body.



Brain function by SPECT scan
in person with schizophrenia.



Brain function by
SPECT scan in healthy brain.