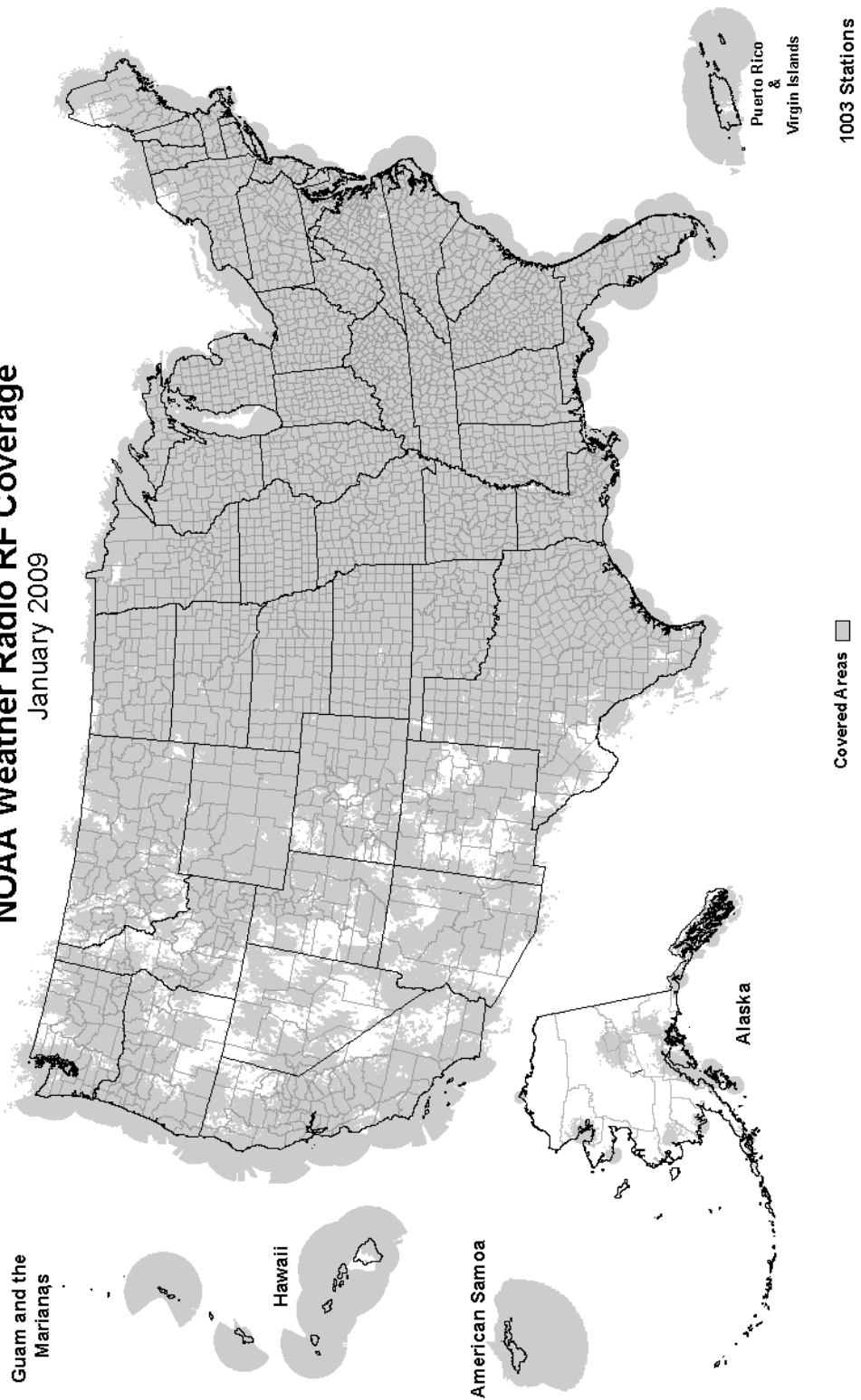


NOAA Weather Radio RF Coverage
January 2009



NOAA/PA 94062
Rev. March 2009



**The Voice of NOAA's
National Weather Service**

< Over 1000 Transmitters >

**Broadcasting Continuous
Weather Information on the
Following Frequencies:**

- 162.400 MHz
- 162.425 MHz
- 162.450 MHz
- 162.475 MHz
- 162.500 MHz
- 162.525 MHz
- 162.550 MHz

U.S. Department of Commerce
National Oceanic and Atmospheric Administration
National Weather Service

<http://www.nws.noaa.gov/nwr>

NOAA WEATHER RADIO

The Voice of NOAA's National Weather Service

<http://www.nws.noaa.gov/nwr>

NOAA Weather Radio is a service of the National Oceanic and Atmospheric Administration (NOAA) of the U.S. Department of Commerce. As the "voice of the National Weather Service," it provides continuous broadcasts (24 hours a day) of the latest weather information from local National Weather Service offices. Weather messages are repeated every 4 to 6 minutes and are routinely updated every 1 to 6 hours or more frequently in rapidly changing local weather or if a nearby natural hazardous or manmade condition exists.



The regular broadcasts are specifically tailored to weather information needs of the people within the service area of the transmitter. For example, in addition to general weather information, stations in coastal areas provide information of interest to mariners. Other specialized information, such as hydrological forecasts and other climate data may be broadcast.

During severe weather, National Weather Service forecasters can interrupt the routine weather broadcasts and insert special warning messages concerning imminent threats to life and property. The forecaster can also add special signals to warnings that trigger "alerting" features of specially equipped receivers. In the simplest case, this signal activates audible or visual alarms, indicating that an emergency condition exists within the broadcast areas of the station being monitored, and alerts the listener to turn up the volume and stay tuned for more information. More sophisticated receivers are automatically turned on and set to an audible volume when an alert is received.

In the most sophisticated alerting system, NOAA Weather Radio Specific Area Message Encoding (SAME), digital coding is employed to activate only those special receivers programmed for specific emergency conditions in specific area, typically a county. SAME can activate specially equipped radio and cable television receivers and provide a short text message that identifies the location and type of emergency. SAME is the primary activator for the FCC Emergency Alert System (EAS).

To program NWR SAME receivers with the proper county(s) and marine area(s) of choice, you need to know the 6-digit SAME code number(s) for that county(s). Once you have your code number(s), follow the manufacturer's directions for programming your NWR SAME receiver. You can obtain your SAME code numbers by dialing:

888-NWR-SAME (888-697-7263) – Voice &TTY/TTD Accessible

Under a January 1975 White House policy statement, NOAA Weather Radio was designated the sole Government-operated radio system to provide direct warning into private homes for both

RHODE ISLAND	Borger	162.400	Escalante	162.425	Hinton	162.425
Providence	Brownsville	162.550	Lake Powell.....	162.550	Monteville.....	162.525
	Bryan	162.550	Logan	162.400	Moorefield	162.400
SOUTH CAROLINA	Burkeville.....	162.425	Manti	162.425	Morgantown	162.475
Aiken	Carrizo Springs.....	162.550	Milford/Cedar City	162.400	Sutton	162.450
Aynor.....	Center	162.525	Moab	162.475		
Barnwell	Childress	162.525	Monticello	162.450	WISCONSIN	
Beaufort	Cisco	162.500	Salt Lake City.....	162.550	Ashland	162.525
Charleston.....	Coleman.....	162.475	St. George.....	162.475	Baraboo	162.450
Cheraw	Corpus Christi	162.550	Tabiona	162.550	Black River Falls	162.500
Columbia	Corsicana	162.525	Tooele (South Mountain)	162.450	Coloma	162.400
Cross	Crowley / Fort Worth	162.550	Tooele (Vernon Hills)	162.525	Crandon	162.450
Florence	Cumby	162.500	Vernal	162.400	Dubuque	162.400
Georgetown.....	Dallas	162.400	Wendover.....	162.475	Fond Du Lac	162.500
Greenville.....	Del Rio	162.400			Green Bay.....	162.550
Jasper County	D'Hanis.....	162.525	VERMONT		Janesville	162.425
Kirksey	Dickens	162.500	Burlington.....	162.400	Ladysmith	162.550
Orangeburg	Dilley	162.500	Castleton.....	162.500	Madison	162.550
Rock Hill	El Paso	162.475	Marlboro	162.425	Menomonie	162.400
Sumter.....	El Paso Spanish.....	162.550	St. Johnsbury	162.425	Milwaukee	162.400
	Galveston	162.550	Windsor.....	162.475	New London.....	162.525
	Gilmer	162.425			Park Falls	162.500
SOUTH DAKOTA	Gonzales	162.525	VIRGIN ISLANDS		Prairie Du Chien.....	162.500
Aberdeen.....	Guadalupe Mt. Nat. Park	162.525	St. Croix	162.500	Racine	162.450
Arlington	Houston	162.400			Rhineland	162.400
Faith	Junction	162.475	VIRGINIA		Richland Center	162.475
Firesteel	Kerrville	162.450	Covesville.....	162.450	Sheboygan	162.525
Hot Springs	La Grange	162.500	Halifax	162.450	Sister Bay	162.425
Lead	Laredo	162.550	Heathsville	162.400	Spooner	162.475
Lowry.....	Llano	162.425	Lynchburg	162.550	Wausau	162.475
Mitchell.....	Lubbock.....	162.400	Manassas.....	162.550	Wausaukee	162.400
Philip	Lufkin	162.550	Norfolk	162.550	Winona	162.425
Pickstown	Marietta	162.525	Richmond.....	162.475	Withee.....	162.425
Pierre.....	Miami	162.450	Roanoke.....	162.475		
Porcupine.....	Midland/Odessa	162.400			WYOMING	
Rapid City.....	Milano	162.525	WASHINGTON		Afton	162.425
Reliance	Mineral Wells.....	162.525	Astoria.....	162.400	Casper	162.400
Sioux Falls.....	Muenster	162.425	Cle Elum	162.400	Cheyenne	162.550
South Shore	New Taiton	162.450	Davis Peak	162.525	Cody	162.400
Wessington	Onalaska	162.500	Dayton	162.525	Dubois.....	162.450
White River.....	Ozona	162.500	Forks.....	162.425	Elk Plaza	162.425
	Palestine	162.450	H Street - Blaine Area	162.525	Evanson	162.450
	Paris	162.550	Neah Bay	162.550	Gillette.....	162.500
	Pecos	162.450	Okanogan	162.525	Glendo	162.450
TENNESSEE	Perryton	162.475	Olympia	162.475	Grant Village	162.450
Bristol	Pharr	162.400	Plymouth	162.425	Jackson	162.525
Centerville	Plainview	162.450	Puget Sound Marine	162.425	Kaycee.....	162.550
Chattanooga.....	Port O'Connor	162.475	Randle	162.425	Kemmerer	162.525
Clarksville.....	Richland Springs	162.525	Richland	162.450	Lander.....	162.475
Clifton	Rio Grande City.....	162.425	Seattle.....	162.550	Newcastle	162.475
Cookeville.....	Riviera	162.525	Spokane	162.400	Pinedale	162.500
Dyersburg.....	San Angelo.....	162.550	The Dalles	162.400	Rawlins	162.425
Hickman	San Antonio.....	162.550	Wenatchee.....	162.475	Rock Springs.....	162.550
Jackson	Seguin	162.475	Yakima	162.550	Sheridan	162.475
Knoxville.....	Seminole	162.425			Thermopolis	162.500
La Follette.....	Sherman.....	162.475	WEST VIRGINIA		Worland	162.525
Lafayette.....	Stephenville.....	162.450	Backbone Mountain	162.450		
Lawrenceburg.....	Summerfield.....	162.500	Beckley	162.550	As of March 2009, NOAA is	
Lobelville	Sweetwater	162.425	Charleston.....	162.400	operating 1005 stations	
Memphis.....	Texarkana	162.550	Clarksburg.....	162.550	across the United States and	
Nashville.....	Three Rivers.....	162.450	Garfield	162.500	its territories.	
Shelbyville	Throckmorton	162.425	Gilbert	162.475		
Spencer	Tyler	162.475	Greggs Knob.....	162.500		
Vale	Uvalde	162.425				
Waverly	Victoria	162.400				
Winchester	Waco	162.475				
	Wichita Falls.....	162.475				
TEXAS						
Abilene						
Alpine						
Amarillo						
Austin						
Bay City.....						
Beaumont.....						
Big Spring.....						
	UTAH					
	Bear Lake.....	162.500				
	Castle Dale.....	162.500				
	Coalville/ Park City	162.475				

To better serve the community, the National Weather Service requests your assistance in reporting any outages of NOAA Weather Broadcast Stations.

Please use our Toll Free Number (888) 886-1227 or send an Email to nwrou tage@noaa.gov to report the outage.

Hannibal.....	162.475	Trenton	162.500
Hermitage	162.450	Valentine.....	162.450
Jamestown.....	162.425	Yankton	162.500
Joplin	162.425		
Kahoka	162.450		
Kansas City.....	162.550		
La Plata.....	162.525		
Lancaster	162.550		
Maryville.....	162.425		
Neosho	162.450		
Piedmont.....	162.425		
Springfield.....	162.400		
St. Louis.....	162.550		
Summersville	162.475		
Trenton	162.500		
Wardell.....	162.525		
West Plains.....	162.525		

MONTANA	
Baker	162.550
Belgian Hill.....	162.500
Billings	162.550
Bozeman	162.500
Broadus	162.425
Browning.....	162.525
Butte	162.550
Circle	162.550
Dillon.....	162.475
Forsyth.....	162.525
Glasgow.....	162.400
Glendive.....	162.475
Glentana	162.525
Great Falls	162.550
Hardin	162.450
Havre	162.400
Helena	162.400
Jordan.....	162.500
Kalispell	162.550
Lewistown	162.500
Livingston.....	162.525
Malta	162.475
Miles City	162.400
Missoula.....	162.400
Plentywood	162.475
Poplar	162.425
Ryegate	162.450
Scobey.....	162.450
Winnett.....	162.400

NEBRASKA	
Albion	162.500
Bassett.....	162.475
Beatrice.....	162.450
Cambridge	162.525
Chadron	162.525
Columbus.....	162.450
Grand Island	162.400
Holdrege	162.475
Lexington	162.450
Lincoln	162.475
Merna	162.500
Merriman.....	162.400
Mullen	162.425
Norfolk	162.550
North Platte.....	162.550
Omaha.....	162.400
Ord.....	162.525
Oshkosh.....	162.525
Scottsbluff	162.475
Shubert	162.500
Sidney.....	162.500
Superior.....	162.525

NEVADA	
Bullhead City.....	162.500
Elko	162.550
Ely	162.400
Eureka	162.550
Fernley.....	162.450
Hawthorne	162.475
Jackpot	162.500
Las Vegas.....	162.550
Owyhee	162.450
Pahrump	162.400
Reno	162.550
Tonopah	162.400
Winnemucca	162.400

NEW HAMPSHIRE	
Clarksville	162.400
Concord	162.400
Deerfield	162.450
Hanover	162.525
Holderness.....	162.550
Mt. Washington.....	162.500
Pack Monadnock	162.525
NEW JERSEY	
Atlantic City.....	162.400
Hardyston	162.500
Howell Township.....	162.450

NEW MEXICO	
Albuquerque	162.400
Artesia	162.425
Carlsbad	162.475
Clovis.....	162.475
Des Moines.....	162.550
Farmington.....	162.475
Hobbs	162.400
Las Cruces.....	162.400
Roswell	162.450
Ruidoso	162.550
Santa Fe	162.550
Silver City.....	162.425

NEW YORK	
Albany.....	162.550
Binghamton.....	162.475
Buffalo	162.550
Call Hill	162.425
Cattaraugus	162.425
Cooperstown.....	162.450
Elmira	162.400
Frewsburg.....	162.525
Gore Mtn.....	162.450
Highland	162.475
Ithaca.....	162.500
Middleville	162.425
Mt. Washington.....	162.450
New York City.....	162.550
Norwich.....	162.525
Riverhead	162.475
Rochester	162.400
Spencerport	162.525
Stamford.....	162.400
Syracuse.....	162.550
Walton	162.425
Watertown.....	162.475

NORTH CAROLINA	
Asheville.....	162.400
Buck Mountain.....	162.500
Cape Hatteras	162.475
Chapel Hill	162.550
Charlotte	162.475
Ellerbe	162.400
Fayetteville	162.475
Garner	162.450
Henderson.....	162.500
Linville	162.450
Lumber Bridge	162.525
Mamie	162.425
Margaretsville	162.450
Mooreville	162.525
Mount Jefferson.....	162.500
New Bern	162.400
Robbinsville	162.525
Rocky Mount.....	162.475
Warsaw	162.425
Windsor	162.525
Winnabow.....	162.550
Winston-Salem	162.400

NORTH DAKOTA	
Bismarck	162.475
Cavalier	162.450
Dickinson.....	162.400
Fargo	162.475
Fort Ransom.....	162.525
Grand Forks.....	162.475
Jamestown	162.550
Langdon	162.525
Minot.....	162.400
New Town.....	162.525
Petersburg	162.400
Rolla	162.475
Scranton	162.525
Sheyenne	162.525
Steele	162.400
Webster	162.425
Williston	162.550
Willow City.....	162.450

NORTHERN MARIANA ISLANDS	
Saipan	162.550

OHIO	
Akron	162.400
Athens	162.425
Bridgeport	162.525
Carey	162.525
Chillicothe	162.500
Cleveland	162.550
Columbus	162.550
Dayton	162.475
Grafton	162.500
High Hill	162.475
Lima.....	162.400
Mansfield	162.450
Marietta	162.400
New Philadelphia.....	162.425
Otway	162.525
Sandusky.....	162.400
Toledo	162.500
Youngstown.....	162.500

OKLAHOMA	
Altus	162.425
Antlers.....	162.400
Ardmore.....	162.525
Atoka	162.500

Bartlesville	162.425
Broken Bow	162.450
Chickasha.....	162.450
Clinton	162.525
Enid	162.475
Grove.....	162.500
Guymon.....	162.500
Lawton	162.550
McAlester	162.475
Oklahoma City	162.400
Oktaha.....	162.525
Ponca City	162.450
Stillwater.....	162.500
Tulsa.....	162.550
Wewoka.....	162.550
Woodward	162.500

OREGON	
Bend/Redmond.....	162.500
Brookings	162.550
Burns Butte	162.475
Cape Blanco.....	162.425
Coos Bay.....	162.400
Eugene	162.400
Florence	162.500
Fossil	162.550
Heppner.....	162.425
Heppner2.....	162.425
John Day.....	162.500
Klamath Falls.....	162.550
Medford	162.400
Mt Hebo.....	162.525
Mt. Ashland	162.475
Neahkahnie	162.425
Newport.....	162.550
Pendleton	162.425
Portland	162.550
Reedsport.....	162.525
Roseburg.....	162.550
Salem	162.475
Spout Springs.....	162.400
Tillamook	162.475
Umatilla	162.500

PENNSYLVANIA	
Allentown.....	162.400
Altoona	162.425
Clearfield	162.550
Coudersport.....	162.500
Erie	162.400
Harrisburg.....	162.550
Hibernia Park.....	162.425
Honesdale	162.450
Huntingdon	162.525
Johnstown	162.400
Meadville	162.475
Parker	162.425
Philadelphia.....	162.475
Pittsburgh	162.550
Punxsutawney	162.500
State College.....	162.475
Towanda.....	162.525
Warren	162.450
Wellsboro	162.475
Wilkes-Barre.....	162.550
Williamsport.....	162.400

PUERTO RICO	
Culebra.....	162.450
Maricao.....	162.550
San Juan	162.400

natural disasters and nuclear attack. This concept has been expanded to include warnings for all hazardous conditions that pose a threat to life and safety, both at a local and national level. As a result, NOAA Weather Radio is being better integrated with other National Weather Service systems to provide state and local emergency managers and other warning providers better access to local weather forecast offices, allowing hazard warnings of all types to be broadcast on NOAA Weather Radio within seconds

NOAA Weather Radio currently broadcasts from 1005 stations in fifty states, Puerto Rico, the U.S. Virgin Islands, American Samoa, Guam, and Saipan on seven frequencies in the VHF band, ranging from 162.400 to 162.550 megahertz (MHz). These frequencies are outside the normal AM or FM broadcast bands.

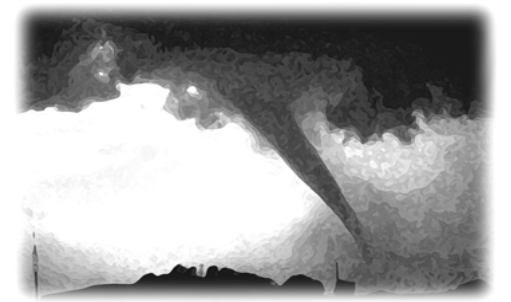
Special radios that receive only NOAA Weather Radio, both with and without special alerting features, are available from numerous manufacturers. In addition, other manufacturers are including NWR capability in a variety of receivers. NOAA Weather Radio capability is currently available on automobile, aircraft, marine, citizens band, and standard AM/FM radios as well as communications receivers, transceivers, scanners, and cable TV.

By nature and design, NOAA Weather Radio coverage is limited to an area within 40 miles of the transmitter. The quality of reception is dictated by transmitter distance, local terrain, and the quality and location of the receiver. In general, those using a high quality receiver on flat terrain or at sea can expect reliable reception beyond 40 miles. Those with standard receivers, surrounded by large buildings in cities and those in mountain valleys may experience little or no reception at considerably less than 40 miles. If possible, a receiver should be tested in the location where it will be used prior to purchase.

NOAA Weather Radio is directly available to a large portion of the U.S. population. The National Weather Service is currently engaged in a program to increase coverage to at least 95 percent of the population.

If you have a question regarding the technical aspects of NOAA Weather Radio such as transmitter location, reception, and characteristics or if you are interested in becoming a partner with the National Weather Service to identify or provide local funding and/or facilities for the installation of a NOAA Weather Radio transmitter, please contact your local National Weather Service Office or send a letter to:

National Weather Service
 Attn: Dissemination Systems Branch, W/OPS17
 1325 East-West Highway
 Silver Spring, MD 20910



The following is a listing of operational stations by state. For specific coverage information for your local area please visit our website at:

http://www.nws.noaa.gov/nwr

ALABAMA

Anniston	162.475
Arab	162.525
Auburn	162.525
Birmingham	162.550
Brewton	162.475
Columbus	162.400
Cullman	162.450
Demopolis	162.475
Dozier	162.550
Florence	162.475
Greenville	162.425
Henagar	162.500
Huntsville	162.400
Jackson	162.500
Louisville	162.475
Mobile	162.550
Montgomery	162.400
Oneonta	162.425
Selma	162.450
Tuscaloosa	162.400
Winfield	162.525

ALASKA

Althorp Peak	162.425
Anchorage	162.550
Barrow	162.550
Bede Mountain	162.450
Bethel	162.550
Cape Fanshaw	162.425
Cape Gull	162.500
Cape Hinchinbrook	162.525
Cold Bay	162.425
Cordova	162.400
Craig	162.475
Dillingham	162.500
Duke Island	162.450
East Point	162.500
Fairbanks	162.550
Glennallen	162.550
Gravina Island	162.525
Haines	162.400
Homer	162.400
Juneau	162.550
Ketchikan	162.550
Kodiak	162.550
Kotzebue	162.550
Manleyville	162.500
Marmot Island	162.500
Mt. McArthur	162.525
Mt. Robert Barron	162.450
Nenana	162.400
Ninilchik	162.550
Nome	162.550
Pillar Mtn.	162.525
Point Pigot	162.450
Potato Point	162.425
Raspberry Island	162.425
Rugged Island	162.425
Saint Paul Island	162.525
Sand Point	162.550
Seward	162.550
Sitka	162.550

Sitkinak Dome	162.450
Soldotna	162.475
Sukkwan Island	162.425
Tripod Hill	162.450
Tuklung Mtn.	162.425
Unalaska	162.550
Valdez	162.550
Wasilla	162.400
Whittier	162.475
Wrangell	162.400
Yakutat	162.400
Zarembo Island	162.450

AMERICAN SAMOA

Pago Pago	162.400
-----------	---------

ARIZONA

Flagstaff	162.400
Globe Gila County S.	162.500
Grand Canyon	162.475
Greer	162.525
Kingman	162.425
Lake Havasu	162.400
Nogales	162.500
Payson Gila County N.	162.425
Phoenix	162.550
Prescott	162.525
Safford	162.550
Show Low	162.400
Tucson	162.400
Window Rock	162.550

ARKANSAS

Cherokee Village	162.475
El Dorado	162.525
Fayetteville	162.475
Fort Smith	162.550
Fountain Hill	162.475
Gurdon	162.475
Harrison	162.525
Jonesboro	162.550
Little Rock	162.550
Marvell	162.525
Mena	162.400
Morrilton	162.475
Mount Ida	162.425
Mountain View	162.450
Russell	162.400
Russellville	162.525
Springdale	162.400
Star City	162.400
Yellville	162.500

CALIFORNIA

Avalon	162.525
Bakersfield	162.550
Big Rock Ridge	162.500
Big Sur	162.475
Coachella	162.400
Coachella / Spanish	162.525
Contra Costa County	162.425
Conway Summit	162.525
El Paso Mtns.	162.425
Eureka	162.400
Fresno	162.400
Grass Valley	162.400
Los Angeles	162.550
Monterey	162.550
Monterey Marine	162.450
Point Arena	162.550
Redding	162.550
Sacramento	162.550

San Diego	162.400
San Diego Marine	162.425
San Francisco	162.400
San Luis Obispo	162.550
San Simeon	162.525
Sandberg	162.400
Santa Ana	162.450
Santa Barbara	162.400
Santa Barbara Marine	162.475
Sonoma County	162.475
Ukiah	162.525
Victorville	162.500
Yosemite	162.450
Yuma	162.550

COLORADO

Alamosa	162.425
Anton	162.450
Bethune	162.525
Boyero	162.450
Canon City	162.500
Colorado Springs	162.475
Deer Trail	162.500
Denver	162.550
Dillon	162.400
Durango	162.425
Fort Collins/Ault	162.450
Fort Morgan	162.525
Fowler	162.425
Franktown	162.450
Glenwood Springs	162.500
Grand Junction	162.550
Greeley	162.400
La Junta	162.500
Lamar	162.525
Mead/Longmont	162.475
Montrose	162.450
Pueblo	162.400
Springfield	162.400
Steamboat Springs	162.525
Sterling	162.400
Walsenburg	162.450
Wray	162.475

CONNECTICUT

Cornwall	162.500
Hartford	162.475
Meriden	162.400
New London	162.550

DELAWARE

Lewes	162.550
Salisbury	162.475

DISTRICT OF COLUMBIA

Washington DC	162.450
---------------	---------

FLORIDA

Belle Glade	162.400
Bethlehem	162.450
Daytona Beach	162.400
East Point	162.500
Fort Myers	162.475
Fort Pierce	162.425
Gainesville	162.475
Inverness	162.400
Jacksonville	162.550
Key West	162.400
Lake City	162.400
Largo	162.450
Melbourne	162.550
Miami	162.550

Morrison	162.550
Naples	162.525
Ocala	162.525
Orlando	162.475
Palatka	162.425
Panama City	162.550
Pensacola	162.400
Princeton	162.425
Salem	162.425
Sebring	162.500
Sneads	162.425
Sumterville	162.500
Tallahassee	162.400
Tampa Bay	162.550
Tea Table Key	162.450
Venice	162.400
West Palm Beach	162.475

GEORGIA

Americus	162.425
Ashburn	162.450
Athens	162.400
Atlanta	162.550
Augusta	162.550
Baxley	162.525
Blakely	162.525
Blue Ridge	162.475
Brasstown Bald	162.500
Brunswick	162.425
Buchanan	162.425
Chatsworth	162.400
Clayton	162.450
Cleveland	162.525
Eastman	162.400
Eatonton	162.525
Jesup	162.450
La Grange	162.450
Macon	162.475
Metter	162.425
Pelham	162.550
Sandersville	162.450
Summerville	162.450
Thomaston	162.500
Toccoa	162.425
Valdosta	162.500
Washington	162.500
Waycross	162.475
Waynesboro	162.425

GUAM

Guam	162.400
------	---------

HAWAII

Hawaii Kai	162.400
Kauai	162.400
Kulani Cone	162.550
Maui	162.400
Oahu	162.550
South Point	162.550

IDAHO

Boise	162.550
Bonnors Ferry	162.500
Burley	162.475
Driggs	162.450
Grangeville	162.450
Lewiston	162.550
McCall	162.475
Payette	162.400
Pocatello	162.550
Salmon	162.500
Sedgwick Peak	162.425

Sun Valley	162.450
Twin Falls	162.400

ILLINOIS

Bloomington	162.525
Champaign	162.550
Chester	162.450
Chicago	162.550
Crescent City	162.500
Crystal Lake	162.500
DeKalb	162.550
Dixon	162.525
Freeport	162.450
Galesburg	162.400
Hillsboro	162.425
Jacksonville	162.525
Jerseyville	162.450
Kankakee	162.525
Lockport	162.425
Macomb	162.500
Marion	162.425
McLeansboro	162.400
Newton	162.450
Odell	162.450
Paris	162.525
Peoria	162.475
Plano	162.400
Princeton	162.425
Quad Cities	162.550
Rockford	162.475
Salem	162.475
Shelbyville	162.500
Springfield	162.400

INDIANA

Angola	162.425
Bloomington	162.450
Edwardsport	162.425
Evansville	162.550
Fort Wayne	162.550
Georgia	162.500
Hebron	162.450
Indianapolis	162.550
Marion	162.450
Michigan City	162.500
Monticello/Lafayette	162.475
New Albany	162.475
Newport	162.425
North Webster	162.500
Putnamville	162.400
Richmond	162.500
Seymour	162.525
South Bend	162.400

IOWA

Burlington	162.525
Carroll	162.425
Cedar Rapids	162.475
Decorah	162.525
Denison	162.550
Des Moines	162.550
Essex	162.550
Fairfield	162.400
Burley	162.500
Fort Dodge	162.400
Hancock/Pottawattam	162.525
Iowa Falls	162.525
Lake Rathbun	162.425
Lenox	162.450
Manchester	162.450
Maquoketa	162.425
Marshalltown	162.500

Milford	162.550
Montezuma	162.450
Ottumwa	162.500
Ringsted	162.475
Sanborn	162.525
Sioux City	162.475
St. Ansgar	162.450
Storm Lake	162.450
Van Wert	162.475
Waterloo	162.550

KANSAS

Abilene	162.525
Beaumont	162.500
Belvidere	162.525
Blue Rapids	162.425
Chanute	162.400
Concordia	162.550
Dighton	162.525
Dodge City	162.475
Ellsworth	162.400
Gem	162.400
Great Bend	162.500
Halls Summit	162.425
Hays	162.450
Kirwin	162.500
Lenora	162.425
Meade	162.425
Parker	162.525
Saint Joseph	162.400
Sharon	162.400
Topeka	162.475
Tribune	162.550
Ulysses	162.450
Wichita	162.550

KENTUCKY

Ashland	162.550
Beattyville	162.500
Bowling Green	162.400
Burkesville	162.475
Campbellsville	162.525
Covington	162.550
East Madison County	162.525
Ekron	162.450
Elizabethtown	162.550
Frankfort	162.500
Frenchburg	162.475
Harlan	162.450
Hazard	162.475
Hopkinsville	162.450
Horse Cave	162.500
Irvine	162.475
Jackson	162.425
Lexington	162.400
London	162.475
Madison County	162.525
Madisonville	162.525
Manchester	162.400
Mayfield	162.475
Maysville	162.425
McKee	162.450
Monticello	162.425
Morehead	162.425
Mount Vernon	162.425
Owenton	162.450
Paintsville	162.525
Phelps	162.500
Pikeville	162.400
Pineville	162.525
Somerset	162.550
Stanton	162.550

West Liberty	162.450
West Madison County	162.525
Whitesville	162.475
Williamsburg	162.500

LOUISIANA

Alexandria	162.475
Baton Rouge	162.400
Bogalusa	162.525
Buras	162.475
Lafayette	162.550
Lake Charles	162.400
Monroe	162.550
Morgan City	162.475
Natchitoches	162.500
New Orleans	162.550
Shreveport	162.400

MAINE

Caribou	162.525
Dresden	162.475
Ellsworth	162.400
Falmouth	162.550
Frenchville	162.475
Greenville	162.425
Jonesboro (Marine)	162.450
Middychamps	162.425
Milo	162.550
Springfield	162.500
Sugarloaf Mtn	162.450

MARYLAND

Baltimore	162.400
Frostburg	162.425
Hagerstown	162.475
Sudlersville	162.500

MASSACHUSETTS

Boston	162.475
Bourne/Hyannis	162.550
Egremont	162.450
Gloucester (Marine)	162.425