

Table III-1
BRAIN AND OTHER NERVOUS SYSTEM CANCER (Invasive)

TRENDS IN SEER INCIDENCE^a AND U.S. MORTALITY^b USING THE JOINPOINT REGRESSION PROGRAM, 1975-2004
WITH UP TO THREE JOINPOINTS BY RACE AND SEX

		Joinpoint Segment 1		Joinpoint Segment 2		Joinpoint Segment 3		Joinpoint Segment 4	
		Year	APC	Year	APC	Year	APC	Year	APC
<u>SEER Cancer Incidence^a</u>									
All Races	Male and Female	1975-1987	1.5*	1987-2004	-0.3*				
All Races	Male	1975-1991	1.1*	1991-2004	-0.7*				
All Races	Female	1975-1987	1.6*	1987-2004	-0.3				
White	Male and Female	1975-1988	1.5*	1988-2004	-0.2				
White	Male	1975-1991	1.2*	1991-2004	-0.6				
White	Female	1975-1987	1.8*	1987-2004	-0.2				
Black	Male and Female	1975-2004	0.2						
Black	Male	1975-2004	0.0						
Black	Female	1975-2004	0.5						
<u>SEER Delay-Adjusted Incidence^a</u>									
All Races	Male and Female	1975-1987	1.5*	1987-2004	-0.2				
All Races	Male	1975-1991	1.0*	1991-2004	-0.6				
All Races	Female	1975-1990	1.5*	1990-1994	-2.4	1994-2004	0.7*		
White	Male and Female	1975-1987	1.6*	1987-2004	0.0				
White	Male	1975-1991	1.2*	1991-2004	-0.4				
White	Female	1975-1988	1.9*	1988-1995	-1.0	1995-2004	0.9		
Black	Male and Female	1975-2004	0.4						
Black	Male	1975-2004	0.1						
Black	Female	1975-2004	0.7						
<u>U.S. Cancer Mortality^b</u>									
All Races	Male and Female	1975-1977	3.7	1977-1981	-0.7	1981-1991	1.3*	1991-2004	-0.9*
All Races	Male	1975-1977	4.4	1977-1982	-0.3	1982-1991	1.3*	1991-2004	-0.9*
All Races	Female	1975-1992	0.9*	1992-2004	-1.0*				
White	Male and Female	1975-1992	1.0*	1992-2004	-0.8*				
White	Male	1975-1977	4.7	1977-1982	-0.3	1982-1991	1.4*	1991-2004	-0.9*
White	Female	1975-1992	1.0*	1992-2004	-0.9*				
Black	Male and Female	1975-1984	-0.2	1984-1987	4.7	1987-2004	-0.7*		
Black	Male	1975-1990	0.7*	1990-2004	-0.8*				
Black	Female	1975-1992	1.3*	1992-2004	-1.0*				

Joinpoint Regression Program Version 3.0, April 2005, National Cancer Institute. (<http://srab.cancer.gov/joinpoint/>).

The APC is the Annual Percent Change based on rates age-adjusted to the 2000 US Std Population (19 age groups - Census P25-1130).

^a Trends are from the SEER 9 areas (San Francisco, Connecticut, Detroit, Hawaii, Iowa, New Mexico, Seattle, Utah, and Atlanta).

^b Trends are from the NCHS public use data file for the total US.

* The APC is significantly different from zero (p<.05).

Table III-2
 BRAIN AND OTHER NERVOUS SYSTEM CANCER (Invasive)

AGE ADJUSTED SEER INCIDENCE^a RATES BY YEAR, RACE AND SEX

	All Races			Whites			Blacks		
	Total	Males	Females	Total	Males	Females	Total	Males	Females
<u>AGE-ADJUSTED RATES</u>									
YEAR OF DIAGNOSIS:									
1975	5.9	6.8	5.0	6.2	7.3	5.3	4.1	4.3	3.9
1976	5.8	7.1	4.7	6.2	7.5	5.0	3.3	5.4	-
1977	6.2	7.8	4.9	6.6	8.3	5.3	3.5	5.2	2.5
1978	5.8	6.8	4.9	6.1	7.2	5.2	3.9	4.3	3.5
1979	6.1	7.4	5.0	6.6	8.0	5.4	3.7	4.2	3.2
1980	6.3	7.6	5.2	6.8	8.2	5.6	3.1	3.3	2.9
1981	6.5	8.1	5.2	6.9	8.4	5.6	5.0	7.2	3.2
1982	6.4	7.9	5.3	6.9	8.6	5.6	3.7	4.4	3.1
1983	6.3	7.6	5.2	6.9	8.2	5.8	2.7	3.8	1.8
1984	6.1	7.2	5.2	6.5	7.6	5.5	4.5	5.3	3.9
1985	6.9	8.5	5.6	7.4	9.1	6.1	4.9	5.6	4.2
1986	6.8	8.1	5.8	7.3	8.6	6.3	4.1	4.7	3.5
1987	7.0	8.1	6.0	7.6	8.7	6.7	4.2	5.5	3.1
1988	6.8	7.9	5.9	7.4	8.6	6.4	4.4	4.5	4.3
1989	6.8	8.5	5.4	7.4	9.2	5.9	4.9	6.0	4.1
1990	7.0	8.1	6.2	7.6	8.8	6.6	4.3	5.2	3.6
1991	6.9	8.6	5.6	7.6	9.3	6.2	3.6	4.5	3.0
1992	7.0	8.7	5.6	7.6	9.5	6.2	3.6	4.0	3.3
1993	6.8	8.1	5.7	7.4	8.9	6.1	4.0	4.1	3.8
1994	6.6	7.9	5.4	7.1	8.5	5.9	4.2	4.5	4.0
1995	6.5	7.9	5.3	7.0	8.6	5.8	3.9	5.0	3.2
1996	6.6	8.2	5.3	7.3	9.0	5.8	4.0	5.1	3.3
1997	6.7	8.1	5.6	7.4	8.9	6.1	3.9	5.1	3.1
1998	6.6	7.7	5.7	7.3	8.4	6.3	4.0	4.3	3.8
1999	6.9	8.4	5.6	7.6	9.2	6.3	3.7	5.2	2.6
2000	6.7	8.2	5.6	7.4	9.0	6.1	4.3	5.4	3.4
2001	6.5	7.9	5.4	7.2	8.6	6.0	4.1	5.3	3.3
2002	6.7	7.9	5.6	7.4	8.8	6.2	4.2	5.2	3.5
2003	6.5	7.4	5.7	7.0	8.1	6.1	4.6	4.4	4.6
2004	6.5	7.6	5.5	7.2	8.3	6.1	3.9	4.6	3.4
1975-2004	6.6	7.9	5.5	7.1	8.5	6.0	4.0	4.9	3.4

^a SEER 9 areas (San Francisco, Connecticut, Detroit, Hawaii, Iowa, New Mexico, Seattle, Utah, and Atlanta). Rates are per 100,000 and are age-adjusted to the 2000 US Std Population (19 age groups - Census P25-1130).
 - Statistic not shown. Rate based on less than 16 cases for the time interval.

Table III-3
BRAIN AND OTHER NERVOUS SYSTEM CANCER (Invasive)
 AGE-ADJUSTED U.S. DEATH^a RATES BY YEAR, RACE AND SEX

	<u>All Races</u>			<u>Whites</u>			<u>Blacks</u>		
	<u>Total</u>	<u>Males</u>	<u>Females</u>	<u>Total</u>	<u>Males</u>	<u>Females</u>	<u>Total</u>	<u>Males</u>	<u>Females</u>
<u>AGE-ADJUSTED RATES</u>									
<u>YEAR OF DEATH:</u>									
1975	4.1	5.0	3.4	4.3	5.2	3.6	2.4	3.2	1.8
1976	4.3	5.3	3.6	4.5	5.5	3.7	2.7	3.5	2.0
1977	4.4	5.4	3.6	4.6	5.7	3.8	2.5	3.0	2.2
1978	4.5	5.5	3.7	4.8	5.8	3.9	2.7	3.4	2.2
1979	4.3	5.2	3.5	4.5	5.5	3.6	2.6	3.3	2.1
1980	4.4	5.4	3.5	4.6	5.8	3.7	2.5	3.0	2.0
1981	4.4	5.3	3.6	4.6	5.6	3.8	2.6	3.3	2.0
1982	4.4	5.4	3.7	4.7	5.7	3.9	2.6	3.4	2.1
1983	4.4	5.3	3.6	4.7	5.6	3.9	2.5	2.9	2.2
1984	4.6	5.6	3.7	4.8	5.9	4.0	2.6	3.3	1.9
1985	4.6	5.6	3.7	4.8	5.9	4.0	2.5	3.2	2.0
1986	4.5	5.6	3.7	4.8	5.9	3.9	2.8	3.5	2.3
1987	4.7	5.7	3.9	5.0	6.0	4.2	2.9	3.6	2.4
1988	4.7	5.9	3.8	5.0	6.2	4.0	2.9	3.6	2.4
1989	4.7	5.8	3.9	5.0	6.2	4.1	2.7	3.5	2.2
1990	4.9	6.0	4.0	5.2	6.3	4.2	3.0	3.7	2.4
1991	4.9	6.0	4.1	5.3	6.4	4.4	2.8	3.4	2.4
1992	4.9	5.9	4.0	5.2	6.3	4.3	2.8	3.4	2.4
1993	4.8	5.9	3.9	5.1	6.2	4.2	2.8	3.6	2.3
1994	4.8	5.9	4.0	5.2	6.3	4.3	2.7	3.2	2.3
1995	4.7	5.7	3.9	5.0	6.0	4.1	2.8	3.4	2.3
1996	4.7	5.7	3.9	5.1	6.1	4.2	2.6	3.2	2.2
1997	4.7	5.7	3.9	5.0	6.0	4.1	2.9	3.3	2.6
1998	4.7	5.7	3.8	5.0	6.1	4.1	2.7	3.4	2.2
1999	4.6	5.7	3.8	5.0	6.0	4.1	2.7	3.3	2.3
2000	4.5	5.6	3.7	4.9	6.0	3.9	2.7	3.3	2.2
2001	4.4	5.5	3.6	4.8	5.9	3.9	2.6	3.1	2.2
2002	4.5	5.5	3.6	4.8	5.8	3.9	2.6	3.2	2.2
2003	4.4	5.4	3.6	4.7	5.7	3.9	2.7	3.4	2.1
2004	4.3	5.2	3.5	4.6	5.6	3.8	2.5	3.0	2.0
1975-2004	4.6	5.6	3.8	4.9	5.9	4.0	2.7	3.3	2.2

^a NCHS public use data file for the total US. Rates are per 100,000 and are age-adjusted to the 2000 US Std Population (19 age groups - Census P25-1130).

- Statistic not shown. Rate based on less than 16 cases for the time interval.

Table III-4
BRAIN AND OTHER NERVOUS SYSTEM CANCER (Invasive)SEER INCIDENCE^a AND U.S. DEATH^b RATES, AGE-ADJUSTED AND AGE-SPECIFIC RATES, BY RACE AND SEX

	All Races			Whites			Blacks		
	Total	Males	Females	Total	Males	Females	Total	Males	Females
<u>SEER INCIDENCE</u>									
<u>AGE AT DIAGNOSIS</u>									
AGE-ADJUSTED RATES, 2000-2004									
All ages	6.4	7.7	5.4	7.0	8.3	5.9	4.1	4.9	3.5
Under 65	4.6	5.3	3.9	5.1	5.8	4.3	2.9	3.4	2.5
65 and over	19.1	23.9	15.7	20.8	25.9	17.1	12.2	14.9	10.4
All ages(IARC world std) ^c	5.3	6.2	4.5	5.8	6.7	5.0	3.4	3.9	3.0
AGE-SPECIFIC RATES, 2000-2004									
<1	3.6	3.4	3.8	3.8	3.7	3.8	2.3	-	-
1-4	4.0	4.3	3.8	4.3	4.5	4.0	3.1	3.1	3.2
5-9	3.2	3.2	3.1	3.4	3.5	3.3	2.4	2.7	2.2
10-14	2.6	2.9	2.4	2.8	3.1	2.5	1.9	1.9	2.0
15-19	2.0	2.2	1.8	2.2	2.4	2.0	1.4	1.8	1.0
20-24	2.2	2.5	1.9	2.4	2.7	2.1	1.2	1.5	-
25-29	2.8	2.9	2.6	3.1	3.2	2.9	1.4	1.3	1.4
30-34	3.2	3.6	2.8	3.6	4.1	3.1	1.8	1.9	1.7
35-39	3.8	4.2	3.4	4.3	4.7	3.9	2.3	2.5	2.0
40-44	4.5	5.3	3.7	5.0	5.8	4.1	2.7	3.3	2.2
45-49	6.0	7.3	4.7	6.5	7.9	5.2	4.3	5.4	3.2
50-54	7.9	9.2	6.6	8.7	10.1	7.3	5.1	5.4	4.9
55-59	10.4	12.8	8.2	11.4	14.0	8.9	6.9	8.3	5.7
60-64	13.5	16.4	10.8	15.0	18.2	12.1	7.3	9.8	5.3
65-69	15.8	19.1	13.0	17.5	21.2	14.2	9.9	11.0	9.1
70-74	20.0	25.1	15.9	21.9	27.2	17.5	11.9	17.2	8.2
75-79	22.6	28.3	18.7	24.8	30.7	20.7	12.4	16.0	10.1
80-84	20.7	25.9	17.5	22.0	27.5	18.5	16.0	19.3	14.2
85+	16.7	22.0	14.4	17.3	23.3	14.6	13.2	-	13.8
<u>U.S. MORTALITY</u>									
<u>AGE AT DEATH</u>									
AGE-ADJUSTED RATES, 2000-2004									
All ages	4.4	5.4	3.6	4.8	5.8	3.9	2.6	3.2	2.2
Under 65	2.6	3.1	2.0	2.8	3.4	2.2	1.6	2.0	1.3
65 and over	17.3	21.3	14.4	18.4	22.5	15.4	9.6	11.5	8.4
All ages(IARC world std) ^c	3.2	3.9	2.6	3.4	4.2	2.8	1.9	2.4	1.6
AGE-SPECIFIC RATES, 2000-2004									
<1	0.4	0.4	0.4	0.4	0.5	0.4	-	-	-
1-4	0.7	0.7	0.6	0.7	0.7	0.6	0.7	0.6	0.8
5-9	0.9	0.9	0.9	0.9	0.9	0.9	0.8	0.9	0.7
10-14	0.7	0.7	0.6	0.7	0.7	0.7	0.7	0.7	0.6
15-19	0.5	0.6	0.5	0.6	0.7	0.5	0.5	0.5	0.5
20-24	0.6	0.7	0.5	0.6	0.7	0.5	0.5	0.6	0.5
25-29	0.8	0.8	0.7	0.8	0.9	0.7	0.5	0.5	0.5
30-34	1.2	1.5	0.9	1.3	1.6	1.0	0.7	1.0	0.5
35-39	1.8	2.3	1.4	2.0	2.5	1.6	1.0	1.1	0.8
40-44	2.7	3.4	2.1	3.0	3.7	2.3	1.7	2.2	1.2
45-49	4.0	5.0	3.0	4.4	5.4	3.3	2.3	2.7	2.0
50-54	5.9	7.4	4.6	6.5	7.9	5.1	3.6	4.7	2.6
55-59	8.4	10.3	6.6	9.0	11.0	7.1	5.2	6.8	3.9
60-64	11.2	13.7	9.0	12.2	14.7	9.9	5.9	7.9	4.4
65-69	14.3	17.2	11.8	15.4	18.5	12.7	8.0	9.2	7.0
70-74	17.6	21.8	14.2	18.8	23.2	15.2	9.3	11.1	8.1
75-79	19.5	24.0	16.3	20.7	25.1	17.4	10.4	14.0	8.3
80-84	20.0	25.0	16.9	21.0	26.2	17.8	11.3	14.6	9.6
85+	16.3	20.3	14.5	16.9	21.3	15.0	10.5	9.8	10.8

^a SEER 17 areas. Rates are per 100,000 and are age-adjusted to the 2000 US Std Population (19 age groups - Census P25-1130), unless noted.

^b NCHS public use data file for the total US. Rates are per 100,000 and are age-adjusted to the 2000 US Std Population (19 age groups - Census P25-1130), unless noted.

^c Rates are per 100,000 and are age-adjusted to the IARC world standard population.

- Statistic not shown. Rate based on less than 16 cases for the time interval.

Table III-5
BRAIN AND OTHER NERVOUS SYSTEM CANCER (Invasive)

SURVIVAL RATES, BY RACE, SEX, DIAGNOSIS YEAR, STAGE AND AGE

	All Races			Whites			Blacks		
	Total	Males	Females	Total	Males	Females	Total	Males	Females
<u>5-YR RELATIVE SURVIVAL RATES</u>									
YEAR OF DIAGNOSIS:									
1960-1963 ^a	-	-	-	18	16	21	19	17	21
1970-1973 ^a	-	-	-	20	18	22	19	19	19
1975-1977 ^b	23.7	22.1	25.7	23.1	21.6	25.0	26.6	20.6	35.9 ^f
1978-1980 ^b	25.0	23.9	26.5	24.5	23.5	25.8	29.1	29.5	28.4 ^f
1981-1983 ^b	25.4	24.5	26.6	24.7	24.0	25.5	32.5	33.4	30.6 ^f
1984-1986 ^b	28.7	27.6	30.1	27.9	26.7	29.4	32.6	34.3	30.4
1987-1989 ^b	30.7	29.1	32.6	30.1	28.2	32.4	32.5	34.1	30.4
1990-1992 ^b	32.2	32.8	31.5	31.3	31.7	30.7	41.4	44.0	38.2
1993-1995 ^b	34.0	34.6	33.1	32.8	33.2	32.3	42.1	46.3	37.4
1996-2003 ^b	34.5 ^e	32.7 ^e	36.9 ^e	33.9 ^e	32.4 ^e	35.8 ^e	37.3 ^e	33.7 ^e	41.6
<u>5-YR PERIOD SURVIVAL RATES^{cd}</u>									
YEAR OF DIAGNOSIS:									
1996-2003	34.5	32.6	36.8	34.0	32.4	36.1	34.1	30.4	38.6
<u>5-YR RELATIVE SURVIVAL RATES, 1996-2003^c</u>									
AGE AT DIAGNOSIS:									
<45	62.8	59.7	66.8	63.5	60.8	67.1	54.0	48.0	61.5
45-54	27.4	25.0	31.0	27.4	24.6	31.7	27.7	27.6	27.6 ^f
55-64	12.7	10.8	15.4	12.4	10.9	14.6	11.7	-	20.9
65-74	7.1	5.2	9.2	6.8	4.9	8.9	7.6	6.0	9.2
75+	4.2	3.3	4.8	4.2	3.4	4.7	4.8	0.0	7.4
Under 65	43.7	40.6	48.0	43.4	40.5	47.5	41.2	36.2	47.3
65 and over	5.9	4.6	7.1	5.7	4.4	6.9	6.6	4.1	8.4

^a Rates are based on End Results data from a series of hospital registries and one population-based registry.

^b Rates are from the SEER 9 areas (San Francisco, Connecticut, Detroit, Hawaii, Iowa, New Mexico, Seattle, Utah, Atlanta).

Rates are based on follow-up of patients into 2004.

^c Rates are from the SEER 17 areas (San Francisco, Connecticut, Detroit, Hawaii, Iowa, New Mexico, Seattle, Utah, Atlanta, San Jose-Monterey, Los Angeles, Alaska Native Registry, Rural Georgia, California excluding SF/SJM/LA, Kentucky, Louisiana and New Jersey). California excluding SF/SJM/LA, Kentucky, Louisiana, and New Jersey contribute cases for diagnosis years 2000-2003. The remaining 13 SEER Areas contribute cases for the entire period 1996-2003. Rates are based on follow-up of patients into 2004.

^d Period survival provides a more up-to-date estimate of survival by piecing together the most recent conditional survival estimates from several cohorts. It is computed here using three calendar year blocks (2001-2003: 0-1 year survival), (2000-2002: 1-2 year survival), (1999-2001: 2-3 year survival), (1998-2000: 3-4 year survival), (1997-1999: 4-5 years survival).

^e The difference in rates between 1975-1977 and 1996-2003 is statistically significant ($p < .05$).

^f The standard error of the survival rate is between 5 and 10 percentage points.

^g The standard error of the survival rate is greater than 10 percentage points.

- Statistic could not be calculated due to fewer than 16 cases during the time period.

Table III-6
BRAIN AND OTHER NERVOUS SYSTEM CANCER (Invasive)

SURVIVAL RATES^a

By Year of Diagnosis

All Races, Males and Females

Year of Diagnosis

	1975- 1979	1980- 1984	1985	1986	1987	1988	1989	1990	1991	1992	1993	1994	1995	1996	1997	1998	1999	2000	2001	2002	2003
Relative Survival Rates (SEER ^b)																					
1-year	47.7	48.9	49.1	53.8	52.9	54.1	52.4	54.5	55.2	53.2	53.5	54.6	53.6	54.6	52.5	55.3	55.8	56.2	58.2	60.2	57.7
2-year	32.9	34.8	34.3	38.3	38.7	39.3	37.8	38.0	41.2	40.0	39.3	41.0	40.0	41.2	38.5	41.4	40.5	42.0	42.5	46.5	
3-year	28.8	30.3	30.6	33.5	34.9	36.0	33.4	33.4	37.9	36.0	36.0	37.3	37.0	37.6	34.8	36.4	36.5	38.4	39.1		
4-year	26.2	27.7	27.9	31.2	32.6	33.8	30.5	31.6	36.0	33.2	34.3	35.1	35.6	35.6	32.9	34.0	34.5	36.6			
5-year	24.4	26.1	26.3	30.1	31.0	31.8	29.3	30.4	34.3	32.0	33.1	33.7	35.0	34.2	31.5	32.6	33.4				
6-year	23.1	25.0	25.2	29.1	29.7	30.7	28.5	29.8	33.3	30.3	32.5	33.2	34.3	33.2	29.9	31.8					
7-year	22.3	24.0	24.4	28.7	28.3	29.7	28.0	28.9	32.8	29.4	31.5	31.9	33.7	32.6	29.4						
8-year	21.4	23.3	23.2	27.6	27.9	28.6	27.2	28.6	32.3	28.8	31.4	31.2	33.1	31.5							
9-year	20.7	22.5	22.9	26.6	27.8	27.8	26.9	28.2	32.2	27.9	31.1	30.9	33.0								
10-year	20.3	21.8	22.3	26.0	27.8	27.5	26.6	28.0	31.7	27.6	30.7	30.8									
11-year	19.9	21.4	22.3	25.8	27.1	27.3	26.0	27.6	31.6	27.4	30.7										
12-year	19.6	21.2	21.8	25.8	26.6	27.2	26.0	27.6	31.1	27.4											
13-year	19.5	20.8	21.4	25.8	26.3	27.2	26.0	27.5	30.8												
14-year	19.4	20.8	21.4	25.8	26.3	26.5	25.7	27.4													
15-year	19.2	20.5	20.8	25.5	26.3	25.8	25.6														
16-year	19.2	20.3	20.8	25.5	26.3	25.8															
17-year	19.1	20.3	20.8	25.4	26.3																
18-year	19.1	20.3	20.8	25.3																	
19-year	19.1	20.1	20.8																		
20-year	19.1	20.0																			

^a Survival rates are relative rates expressed as percents.

^b Rates are from the SEER 9 areas (San Francisco, Connecticut, Detroit, Hawaii, Iowa, New Mexico, Seattle, Utah, and Atlanta).

Table III-7
BRAIN AND OTHER NERVOUS SYSTEM CANCER (Invasive)

SURVIVAL RATES^a

By Year of Diagnosis

All Races, Males

Year of Diagnosis

	1975- 1979	1980- 1984	1985	1986	1987	1988	1989	1990	1991	1992	1993	1994	1995	1996	1997	1998	1999	2000	2001	2002	2003
Relative Survival Rates (SEER ^b)																					
1-year	47.6	49.8	49.5	54.5	52.4	53.3	54.1	57.3	57.1	55.3	55.1	56.2	55.4	56.2	55.7	55.5	55.3	55.0	56.3	59.8	57.6
2-year	32.0	34.6	33.3	39.0	37.1	36.8	38.7	39.7	41.2	40.6	41.0	41.4	41.2	40.2	40.1	40.5	38.8	40.0	39.0	46.1	
3-year	27.4	30.4	29.3	33.9	33.0	33.5	33.9	33.9	38.0	36.8	37.1	38.0	38.0	36.6	35.8	36.1	34.7	36.0	35.7		
4-year	25.1	27.3	26.1	31.1	30.8	31.4	30.1	32.1	36.3	34.4	35.2	36.1	37.0	34.7	34.0	32.9	32.1	33.9			
5-year	22.9	25.2	24.0	29.6	29.5	28.7	29.2	31.1	34.1	33.2	33.2	34.4	36.2	32.9	32.1	31.8	30.7				
6-year	21.7	24.2	23.2	28.4	28.5	27.4	28.2	30.9	33.7	31.3	32.2	33.9	35.2	31.7	30.3	30.2					
7-year	21.0	23.5	22.5	28.0	26.8	26.4	27.4	29.6	32.6	30.2	31.6	33.0	34.2	31.0	29.5						
8-year	20.0	22.8	21.5	27.4	26.4	24.9	26.6	29.5	31.9	29.6	31.6	32.6	33.3	29.6							
9-year	19.3	21.9	21.3	26.7	26.4	24.4	26.5	29.3	31.8	28.5	31.5	31.9	32.8								
10-year	18.9	21.2	20.7	26.1	26.3	24.0	26.4	28.9	31.5	28.1	30.8	31.7									
11-year	18.3	21.0	20.7	25.6	25.5	23.7	26.2	28.7	31.5	27.9	30.7										
12-year	18.1	20.8	20.7	25.6	24.4	23.6	26.1	28.7	31.0	27.9											
13-year	17.9	20.6	20.3	25.6	24.4	23.5	26.0	28.7	30.6												
14-year	17.9	20.3	20.2	25.6	24.4	22.7	26.0	28.7													
15-year	17.9	20.1	19.8	25.6	24.4	21.5	26.0														
16-year	17.9	19.8	19.8	25.6	24.4	21.2															
17-year	17.9	19.7	19.8	25.6	24.4																
18-year	17.9	19.7	19.8	25.6																	
19-year	17.9	19.6	19.8																		
20-year	17.9	19.6																			

^a Survival rates are relative rates expressed as percents.

^b Rates are from the SEER 9 areas (San Francisco, Connecticut, Detroit, Hawaii, Iowa, New Mexico, Seattle, Utah, and Atlanta).

Table III-8
 BRAIN AND OTHER NERVOUS SYSTEM CANCER (Invasive)

SURVIVAL RATES^a

By Year of Diagnosis

All Races, Females

Year of Diagnosis

	1975- 1979	1980- 1984	1985	1986	1987	1988	1989	1990	1991	1992	1993	1994	1995	1996	1997	1998	1999	2000	2001	2002	2003
Relative Survival Rates (SEER ^b)																					
1-year	48.0	47.7	48.6	52.9	53.4	55.1	50.0	51.2	52.7	50.3	51.6	52.4	51.2	52.7	48.5	55.2	56.4	57.6	60.7	60.6	57.8
2-year	34.0	35.2	35.5	37.4	40.6	42.4	36.5	36.1	41.3	39.3	37.3	40.4	38.4	42.5	36.4	42.5	42.8	44.4	47.0	47.0	
3-year	30.6	30.3	32.3	32.8	37.2	39.1	32.8	32.7	37.7	34.9	34.6	36.5	35.8	38.9	33.6	36.8	38.8	41.4	43.5		
4-year	27.7	28.3	30.3	31.3	34.6	36.7	31.0	31.0	35.6	31.7	33.2	33.9	33.7	36.7	31.5	35.3	37.6	40.0			
5-year	26.2	27.3	29.1	30.7	32.7	35.4	29.4	29.6	34.5	30.3	33.0	32.9	33.4	36.0	30.6	33.7	36.9				
6-year	24.8	25.9	27.8	29.7	31.0	34.6	28.6	28.5	32.8	28.9	32.7	32.1	32.8	35.2	29.3	33.4					
7-year	23.9	24.7	26.8	29.5	29.9	33.7	28.6	28.2	32.8	28.3	31.2	30.4	32.8	34.7	29.3						
8-year	23.2	23.8	25.3	27.8	29.6	33.1	27.9	27.3	32.6	27.7	31.1	29.4	32.8	34.0							
9-year	22.4	23.3	24.7	26.6	29.4	31.8	27.4	26.9	32.6	27.1	30.5	29.4	32.8								
10-year	21.9	22.6	24.2	25.9	29.4	31.8	26.8	26.8	31.8	26.8	30.5	29.4									
11-year	21.5	21.8	24.2	25.9	28.9	31.6	25.6	26.2	31.6	26.6	30.5										
12-year	21.4	21.6	23.0	25.7	28.8	31.4	25.6	26.0	30.9	26.4											
13-year	21.3	21.2	22.5	25.7	28.0	31.4	25.6	25.8	30.7												
14-year	21.0	21.2	22.5	25.5	28.0	31.1	24.9	25.7													
15-year	20.8	21.0	21.9	25.0	28.0	30.9	24.8														
16-year	20.5	20.8	21.9	24.2	28.0	30.9															
17-year	20.3	20.8	21.9	23.8	28.0																
18-year	20.3	20.8	21.9	23.8																	
19-year	20.3	20.6	21.9																		
20-year	20.3	20.5																			

^a Survival rates are relative rates expressed as percents.

^b Rates are from the SEER 9 areas (San Francisco, Connecticut, Detroit, Hawaii, Iowa, New Mexico, Seattle, Utah, and Atlanta).

Table III-9
 BRAIN AND OTHER NERVOUS SYSTEM CANCER (Invasive)

Risk of Being Diagnosed With Cancer in 10, 20 and 30 Years, Lifetime Risk of Being Diagnosed with Cancer, and
 Lifetime Risk of Dying from Cancer Given Cancer Free At Current Age
 Both Sexes, 2002-2004 By Race/Ethnicity

Race/ Ethnicity	Current Age	Risk of Being Diagnosed with Cancer			Risk of Dying from Cancer	
		+10 yrs Percent (95% C.I.)	+20 yrs Percent (95% C.I.)	+30 yrs Percent (95% C.I.)	Eventually Percent (95% C.I.)	Eventually Percent (95% C.I.)
All Races	0	0.03 (0.03, 0.04)	0.06 (0.06, 0.06)	0.08 (0.08, 0.09)	0.60 (0.59, 0.61)	0.43 (0.43, 0.44)
	10	0.02 (0.02, 0.03)	0.05 (0.05, 0.05)	0.08 (0.08, 0.09)	0.57 (0.56, 0.58)	0.43 (0.43, 0.44)
	20	0.03 (0.02, 0.03)	0.06 (0.06, 0.06)	0.11 (0.11, 0.11)	0.55 (0.54, 0.56)	0.43 (0.42, 0.43)
	30	0.03 (0.03, 0.04)	0.09 (0.08, 0.09)	0.17 (0.17, 0.17)	0.53 (0.52, 0.54)	0.42 (0.42, 0.43)
	40	0.05 (0.05, 0.05)	0.14 (0.13, 0.14)	0.27 (0.26, 0.27)	0.50 (0.49, 0.51)	0.41 (0.41, 0.42)
	50	0.09 (0.09, 0.09)	0.22 (0.21, 0.23)	0.37 (0.36, 0.38)	0.46 (0.45, 0.47)	0.39 (0.39, 0.40)
	60	0.14 (0.13, 0.15)	0.30 (0.29, 0.31)	0.38 (0.37, 0.39)	0.40 (0.39, 0.41)	0.34 (0.34, 0.35)
	70	0.18 (0.18, 0.19)	0.28 (0.27, 0.29)	- (- , -)	0.30 (0.29, 0.31)	0.26 (0.26, 0.27)
80	0.14 (0.13, 0.14)	- (- , -)	- (- , -)	0.16 (0.16, 0.17)	0.16 (0.15, 0.16)	
White	0	0.04 (0.03, 0.04)	0.06 (0.06, 0.06)	0.09 (0.09, 0.09)	0.66 (0.65, 0.67)	0.47 (0.46, 0.47)
	10	0.03 (0.02, 0.03)	0.05 (0.05, 0.06)	0.09 (0.09, 0.10)	0.63 (0.62, 0.64)	0.47 (0.46, 0.47)
	20	0.03 (0.03, 0.03)	0.07 (0.06, 0.07)	0.12 (0.12, 0.13)	0.61 (0.59, 0.62)	0.46 (0.46, 0.47)
	30	0.04 (0.04, 0.04)	0.10 (0.09, 0.10)	0.19 (0.18, 0.19)	0.58 (0.57, 0.59)	0.46 (0.45, 0.46)
	40	0.06 (0.05, 0.06)	0.15 (0.15, 0.16)	0.30 (0.29, 0.30)	0.55 (0.54, 0.56)	0.45 (0.44, 0.45)
	50	0.10 (0.09, 0.10)	0.24 (0.24, 0.25)	0.41 (0.40, 0.42)	0.51 (0.50, 0.52)	0.42 (0.42, 0.43)
	60	0.16 (0.15, 0.16)	0.33 (0.32, 0.34)	0.42 (0.41, 0.43)	0.43 (0.42, 0.45)	0.37 (0.36, 0.37)
	70	0.20 (0.19, 0.21)	0.30 (0.29, 0.31)	- (- , -)	0.32 (0.31, 0.33)	0.28 (0.27, 0.28)
80	0.14 (0.14, 0.15)	- (- , -)	- (- , -)	0.17 (0.16, 0.18)	0.16 (0.16, 0.17)	
Black	0	0.03 (0.02, 0.03)	0.04 (0.04, 0.05)	0.06 (0.05, 0.06)	0.32 (0.30, 0.35)	0.22 (0.21, 0.23)
	10	0.02 (0.01, 0.02)	0.03 (0.03, 0.04)	0.05 (0.05, 0.06)	0.30 (0.28, 0.33)	0.22 (0.21, 0.23)
	20	0.01 (0.01, 0.02)	0.04 (0.03, 0.04)	0.07 (0.06, 0.07)	0.29 (0.27, 0.32)	0.21 (0.20, 0.22)
	30	0.02 (0.02, 0.03)	0.05 (0.05, 0.06)	0.10 (0.09, 0.11)	0.28 (0.26, 0.31)	0.21 (0.20, 0.22)
	40	0.03 (0.03, 0.04)	0.08 (0.07, 0.09)	0.15 (0.13, 0.16)	0.27 (0.24, 0.29)	0.20 (0.19, 0.21)
	50	0.05 (0.05, 0.06)	0.12 (0.11, 0.14)	0.19 (0.17, 0.21)	0.25 (0.22, 0.27)	0.20 (0.19, 0.21)
	60	0.08 (0.06, 0.09)	0.15 (0.14, 0.17)	0.20 (0.18, 0.23)	0.22 (0.19, 0.24)	0.17 (0.16, 0.18)
	70	0.10 (0.08, 0.12)	0.16 (0.14, 0.19)	- (- , -)	0.18 (0.15, 0.20)	0.14 (0.13, 0.15)
80	0.10 (0.08, 0.12)	- (- , -)	- (- , -)	0.12 (0.10, 0.16)	0.09 (0.08, 0.11)	

Devcan Version 6.2.0, April 2006, National Cancer Institute (<http://srab.cancer.gov/devcan/>).

Source: Incidence data are from the SEER 17 areas (San Francisco, Connecticut, Detroit, Hawaii, Iowa, New Mexico, Seattle, Utah, Atlanta, San Jose-Monterey, Los Angeles, Alaska Native Registry, Rural Georgia, California excluding SF/SJM/LA, Kentucky, Louisiana and New Jersey). Mortality data are from the NCHS public use data file for the total US.

- Statistic could not be calculated.

A percent or confidence interval value of 0.00 represents a value that is below 0.005.

Table III-9 - continued
 BRAIN AND OTHER NERVOUS SYSTEM CANCER (Invasive)

Risk of Being Diagnosed With Cancer in 10, 20 and 30 Years, Lifetime Risk of Being Diagnosed with Cancer, and
 Lifetime Risk of Dying from Cancer Given Cancer Free At Current Age
 Both Sexes, 2002-2004 By Race/Ethnicity

Race/ Ethnicity	Current Age	Risk of Being Diagnosed with Cancer				Risk of Dying from Cancer	
		+10 yrs Percent (95% C.I.)	+20 yrs Percent (95% C.I.)	+30 yrs Percent (95% C.I.)	Eventually Percent (95% C.I.)	Eventually Percent (95% C.I.)	
Asian/ Pacific Islander	0	0.03 (0.02, 0.03)	0.04 (0.04, 0.05)	0.06 (0.05, 0.07)	0.35 (0.32, 0.39)	0.25 (0.22, 0.29)	
	10	0.02 (0.01, 0.02)	0.03 (0.03, 0.04)	0.05 (0.05, 0.06)	0.33 (0.30, 0.37)	0.25 (0.22, 0.29)	
	20	0.02 (0.01, 0.02)	0.03 (0.03, 0.04)	0.06 (0.06, 0.07)	0.31 (0.28, 0.35)	0.24 (0.22, 0.28)	
	30	0.02 (0.02, 0.02)	0.05 (0.04, 0.06)	0.09 (0.08, 0.10)	0.30 (0.27, 0.34)	0.24 (0.21, 0.28)	
	40	0.03 (0.02, 0.04)	0.07 (0.06, 0.08)	0.14 (0.12, 0.15)	0.28 (0.25, 0.32)	0.24 (0.21, 0.27)	
	50	0.05 (0.04, 0.05)	0.11 (0.09, 0.12)	0.18 (0.16, 0.20)	0.25 (0.22, 0.29)	0.22 (0.19, 0.26)	
	60	0.07 (0.05, 0.08)	0.14 (0.12, 0.16)	0.20 (0.17, 0.23)	0.21 (0.19, 0.26)	0.20 (0.17, 0.24)	
	70	0.08 (0.06, 0.10)	0.15 (0.12, 0.18)	- (- , -)	0.16 (0.13, 0.21)	0.16 (0.13, 0.20)	
	80	0.09 (0.06, 0.11)	- (- , -)	- (- , -)	0.10 (0.08, 0.15)	0.11 (0.08, 0.16)	
American Indian/ Alaska Native ^a	0	0.02 (0.01, 0.04)	0.03 (0.02, 0.06)	0.04 (0.02, 0.08)	0.22 (0.14, 0.49)	0.18 (0.14, 0.27)	
	10	0.01 (0.00, 0.03)	0.03 (0.01, 0.05)	0.04 (0.02, 0.07)	0.20 (0.13, 0.48)	0.17 (0.13, 0.26)	
	20	0.01 (0.00, 0.03)	0.03 (0.01, 0.06)	0.04 (0.02, 0.08)	0.19 (0.12, 0.47)	0.17 (0.13, 0.26)	
	30	0.02 (0.01, 0.04)	0.03 (0.01, 0.06)	0.04 (0.02, 0.08)	0.18 (0.11, 0.47)	0.17 (0.13, 0.26)	
	40	0.01 (0.00, 0.04)	0.03 (0.01, 0.06)	0.11 (0.06, 0.19)	0.17 (0.10, 0.46)	0.17 (0.13, 0.26)	
	50	0.01 (0.00, 0.04)	0.10 (0.05, 0.18)	0.14 (0.08, 0.25)	0.16 (0.09, 0.47)	0.16 (0.11, 0.26)	
	60	0.09 (0.04, 0.17)	0.14 (0.07, 0.25)	0.16 (0.08, 0.30)	0.16 (0.08, 0.49)	0.14 (0.09, 0.24)	
	70	0.06 (0.02, 0.14)	0.08 (0.02, 0.21)	- (- , -)	0.08 (0.02, 0.46)	0.11 (0.06, 0.23)	
	80	0.03 (0.00, 0.20)	- (- , -)	- (- , -)	0.03 (0.00, 0.58)	0.05 (0.02, 0.23)	
Hispanic ^b	0	0.03 (0.03, 0.04)	0.05 (0.05, 0.06)	0.07 (0.06, 0.08)	0.54 (0.50, 0.58)	0.32 (0.30, 0.34)	
	10	0.02 (0.02, 0.02)	0.04 (0.03, 0.04)	0.06 (0.06, 0.07)	0.51 (0.48, 0.56)	0.31 (0.29, 0.33)	
	20	0.02 (0.02, 0.02)	0.04 (0.04, 0.05)	0.08 (0.08, 0.09)	0.50 (0.46, 0.54)	0.31 (0.29, 0.33)	
	30	0.03 (0.02, 0.03)	0.06 (0.06, 0.07)	0.13 (0.12, 0.14)	0.48 (0.44, 0.53)	0.31 (0.29, 0.33)	
	40	0.04 (0.03, 0.04)	0.11 (0.10, 0.12)	0.22 (0.20, 0.24)	0.46 (0.42, 0.51)	0.30 (0.28, 0.32)	
	50	0.07 (0.06, 0.08)	0.19 (0.17, 0.20)	0.32 (0.30, 0.35)	0.43 (0.39, 0.48)	0.29 (0.27, 0.31)	
	60	0.12 (0.11, 0.13)	0.26 (0.24, 0.29)	0.35 (0.32, 0.38)	0.38 (0.34, 0.42)	0.26 (0.24, 0.29)	
	70	0.16 (0.14, 0.18)	0.26 (0.23, 0.29)	- (- , -)	0.29 (0.25, 0.34)	0.21 (0.19, 0.23)	
	80	0.13 (0.10, 0.16)	- (- , -)	- (- , -)	0.17 (0.13, 0.22)	0.14 (0.11, 0.16)	

Devcan Version 6.2.0, April 2006, National Cancer Institute (<http://srab.cancer.gov/devcan/>).

Source: Incidence data are from the SEER 17 areas (San Francisco, Connecticut, Detroit, Hawaii, Iowa, New Mexico, Seattle, Utah, Atlanta, San Jose-Monterey, Los Angeles, Alaska Native Registry, Rural Georgia, California excluding SF/SJM/LA, Kentucky, Louisiana and New Jersey). Mortality data are from the NCHS public use data file for the total US.

^a Underlying incidence and mortality data for American Indian/Alaska Native are based on the CHSDA (Contract Health Service Delivery Area) counties.

^b Hispanic is not mutually exclusive from whites, blacks, Asian/Pacific Islanders, and American Indians/Alaska Natives. Underlying incidence data for Hispanics are based on NHIA and exclude cases from the Alaska Native Registry and Kentucky. Underlying mortality data for Hispanics exclude deaths from Minnesota, New Hampshire and North Dakota.

- Statistic could not be calculated.

A percent or confidence interval value of 0.00 represents a value that is below 0.005.

Table III-9 - continued
 BRAIN AND OTHER NERVOUS SYSTEM CANCER (Invasive)

Risk of Being Diagnosed With Cancer in 10, 20 and 30 Years, Lifetime Risk of Being Diagnosed with Cancer, and
 Lifetime Risk of Dying from Cancer Given Cancer Free At Current Age
 Males, 2002-2004 By Race/Ethnicity

Race/ Ethnicity	Current Age	Risk of Being Diagnosed with Cancer				Risk of Dying from Cancer	
		+10 yrs Percent (95% C.I.)	+20 yrs Percent (95% C.I.)	+30 yrs Percent (95% C.I.)	Eventually Percent (95% C.I.)	Eventually Percent (95% C.I.)	
All Races	0	0.04 (0.03, 0.04)	0.06 (0.06, 0.06)	0.09 (0.08, 0.09)	0.67 (0.65, 0.68)	0.48 (0.47, 0.49)	
	10	0.03 (0.02, 0.03)	0.05 (0.05, 0.06)	0.09 (0.09, 0.10)	0.64 (0.63, 0.66)	0.48 (0.47, 0.49)	
	20	0.03 (0.03, 0.03)	0.06 (0.06, 0.07)	0.12 (0.12, 0.13)	0.62 (0.60, 0.64)	0.48 (0.47, 0.48)	
	30	0.04 (0.04, 0.04)	0.10 (0.09, 0.10)	0.20 (0.19, 0.21)	0.60 (0.58, 0.62)	0.48 (0.47, 0.48)	
	40	0.06 (0.06, 0.07)	0.16 (0.16, 0.17)	0.31 (0.30, 0.32)	0.57 (0.56, 0.59)	0.47 (0.46, 0.47)	
	50	0.11 (0.10, 0.11)	0.26 (0.25, 0.27)	0.43 (0.42, 0.45)	0.53 (0.51, 0.54)	0.44 (0.43, 0.45)	
	60	0.17 (0.16, 0.18)	0.35 (0.34, 0.37)	0.44 (0.42, 0.45)	0.46 (0.44, 0.47)	0.39 (0.38, 0.39)	
	70	0.22 (0.21, 0.23)	0.32 (0.31, 0.34)	- (- , -)	0.34 (0.33, 0.36)	0.30 (0.29, 0.30)	
80	0.16 (0.15, 0.17)	- (- , -)	- (- , -)	0.19 (0.18, 0.21)	0.18 (0.17, 0.18)		
White	0	0.04 (0.03, 0.04)	0.07 (0.06, 0.07)	0.09 (0.09, 0.10)	0.74 (0.72, 0.75)	0.52 (0.51, 0.53)	
	10	0.03 (0.03, 0.03)	0.06 (0.05, 0.06)	0.10 (0.09, 0.10)	0.71 (0.69, 0.73)	0.52 (0.51, 0.53)	
	20	0.03 (0.03, 0.03)	0.07 (0.07, 0.08)	0.14 (0.13, 0.14)	0.68 (0.66, 0.70)	0.52 (0.51, 0.52)	
	30	0.04 (0.04, 0.05)	0.11 (0.10, 0.11)	0.22 (0.21, 0.23)	0.66 (0.64, 0.68)	0.51 (0.51, 0.52)	
	40	0.07 (0.06, 0.07)	0.18 (0.17, 0.19)	0.35 (0.34, 0.36)	0.63 (0.61, 0.65)	0.50 (0.50, 0.51)	
	50	0.12 (0.11, 0.12)	0.29 (0.28, 0.30)	0.48 (0.46, 0.49)	0.58 (0.56, 0.60)	0.47 (0.47, 0.48)	
	60	0.19 (0.18, 0.20)	0.39 (0.37, 0.40)	0.48 (0.46, 0.50)	0.50 (0.48, 0.52)	0.41 (0.41, 0.42)	
	70	0.24 (0.23, 0.25)	0.35 (0.33, 0.37)	- (- , -)	0.37 (0.35, 0.39)	0.31 (0.31, 0.32)	
80	0.17 (0.16, 0.18)	- (- , -)	- (- , -)	0.20 (0.19, 0.22)	0.18 (0.18, 0.19)		
Black	0	0.03 (0.02, 0.03)	0.04 (0.04, 0.05)	0.06 (0.05, 0.07)	0.35 (0.31, 0.39)	0.23 (0.22, 0.25)	
	10	0.02 (0.01, 0.02)	0.04 (0.03, 0.04)	0.06 (0.05, 0.07)	0.33 (0.29, 0.37)	0.23 (0.22, 0.25)	
	20	0.02 (0.01, 0.02)	0.04 (0.03, 0.05)	0.07 (0.06, 0.09)	0.31 (0.28, 0.35)	0.23 (0.21, 0.24)	
	30	0.02 (0.02, 0.03)	0.06 (0.05, 0.07)	0.12 (0.10, 0.14)	0.30 (0.27, 0.34)	0.23 (0.21, 0.24)	
	40	0.04 (0.03, 0.05)	0.10 (0.08, 0.12)	0.18 (0.15, 0.20)	0.29 (0.26, 0.33)	0.22 (0.21, 0.24)	
	50	0.06 (0.05, 0.08)	0.15 (0.13, 0.17)	0.23 (0.20, 0.26)	0.27 (0.23, 0.31)	0.21 (0.20, 0.23)	
	60	0.10 (0.08, 0.12)	0.19 (0.16, 0.22)	0.23 (0.20, 0.27)	0.24 (0.20, 0.28)	0.19 (0.17, 0.20)	
	70	0.12 (0.10, 0.16)	0.18 (0.14, 0.23)	- (- , -)	0.19 (0.15, 0.24)	0.15 (0.13, 0.17)	
80	0.10 (0.07, 0.15)	- (- , -)	- (- , -)	0.11 (0.07, 0.18)	0.09 (0.07, 0.12)		

Devcan Version 6.2.0, April 2006, National Cancer Institute (<http://srab.cancer.gov/devcan/>).

Source: Incidence data are from the SEER 17 areas (San Francisco, Connecticut, Detroit, Hawaii, Iowa, New Mexico, Seattle, Utah, Atlanta, San Jose-Monterey, Los Angeles, Alaska Native Registry, Rural Georgia, California excluding SF/SJM/LA, Kentucky, Louisiana and New Jersey). Mortality data are from the NCHS public use data file for the total US.

- Statistic could not be calculated.

A percent or confidence interval value of 0.00 represents a value that is below 0.005.

Table III-9 - continued
 BRAIN AND OTHER NERVOUS SYSTEM CANCER (Invasive)

Risk of Being Diagnosed With Cancer in 10, 20 and 30 Years, Lifetime Risk of Being Diagnosed with Cancer, and
 Lifetime Risk of Dying from Cancer Given Cancer Free At Current Age
 Males, 2002-2004 By Race/Ethnicity

Race/ Ethnicity	Current Age	Risk of Being Diagnosed with Cancer				Risk of Dying from Cancer	
		+10 yrs Percent (95% C.I.)	+20 yrs Percent (95% C.I.)	+30 yrs Percent (95% C.I.)	Eventually Percent (95% C.I.)	Eventually Percent (95% C.I.)	
Asian/ Pacific Islander	0	0.02 (0.02, 0.03)	0.04 (0.03, 0.06)	0.06 (0.05, 0.07)	0.37 (0.32, 0.44)	0.31 (0.26, 0.37)	
	10	0.02 (0.01, 0.03)	0.04 (0.03, 0.05)	0.06 (0.05, 0.07)	0.35 (0.30, 0.42)	0.30 (0.26, 0.37)	
	20	0.02 (0.01, 0.02)	0.04 (0.03, 0.05)	0.07 (0.06, 0.09)	0.33 (0.28, 0.40)	0.30 (0.25, 0.36)	
	30	0.02 (0.01, 0.03)	0.06 (0.05, 0.07)	0.11 (0.09, 0.13)	0.31 (0.27, 0.38)	0.29 (0.25, 0.36)	
	40	0.04 (0.03, 0.05)	0.09 (0.08, 0.11)	0.15 (0.13, 0.17)	0.30 (0.25, 0.36)	0.29 (0.24, 0.35)	
	50	0.05 (0.04, 0.07)	0.11 (0.09, 0.14)	0.19 (0.16, 0.22)	0.26 (0.22, 0.33)	0.27 (0.23, 0.34)	
	60	0.06 (0.05, 0.08)	0.14 (0.11, 0.17)	0.21 (0.17, 0.25)	0.22 (0.18, 0.29)	0.24 (0.20, 0.31)	
	70	0.09 (0.06, 0.12)	0.16 (0.12, 0.21)	- (- , -)	0.18 (0.13, 0.25)	0.21 (0.16, 0.28)	
80	0.10 (0.06, 0.15)	- (- , -)	- (- , -)	0.12 (0.07, 0.21)	0.15 (0.10, 0.24)		
American Indian/ Alaska Native ^a	0	0.01 (0.00, 0.06)	0.02 (0.01, 0.07)	0.03 (0.01, 0.09)	0.30 (0.17, 0.95)	0.22 (0.16, 0.41)	
	10	0.01 (0.00, 0.03)	0.02 (0.01, 0.06)	0.05 (0.02, 0.10)	0.29 (0.16, 0.96)	0.22 (0.15, 0.41)	
	20	0.01 (0.00, 0.05)	0.04 (0.01, 0.08)	0.06 (0.03, 0.11)	0.28 (0.16, 0.96)	0.21 (0.14, 0.41)	
	30	0.02 (0.01, 0.06)	0.05 (0.02, 0.10)	0.07 (0.03, 0.14)	0.28 (0.15, 0.97)	0.21 (0.14, 0.41)	
	40	0.02 (0.01, 0.06)	0.05 (0.02, 0.11)	0.17 (0.08, 0.31)	0.26 (0.13, 0.98)	0.21 (0.14, 0.42)	
	50	0.02 (0.00, 0.08)	0.15 (0.07, 0.29)	0.22 (0.10, 0.42)	0.25 (0.12, 1.01)	0.19 (0.12, 0.41)	
	60	0.14 (0.05, 0.29)	0.21 (0.09, 0.42)	0.25 (0.11, 0.55)	0.25 (0.11, 1.08)	0.16 (0.09, 0.41)	
	70	0.09 (0.02, 0.27)	0.13 (0.03, 0.45)	- (- , -)	0.13 (0.03, 1.14)	0.14 (0.06, 0.44)	
80	0.07 (0.00, 0.51)	- (- , -)	- (- , -)	0.07 (0.00, 1.62)	0.09 (0.02, 0.57)		
Hispanic ^b	0	0.03 (0.03, 0.04)	0.05 (0.05, 0.06)	0.07 (0.06, 0.08)	0.60 (0.54, 0.69)	0.34 (0.31, 0.38)	
	10	0.02 (0.02, 0.03)	0.04 (0.04, 0.05)	0.07 (0.06, 0.08)	0.58 (0.52, 0.66)	0.34 (0.31, 0.38)	
	20	0.02 (0.02, 0.02)	0.05 (0.04, 0.05)	0.09 (0.08, 0.10)	0.56 (0.50, 0.65)	0.34 (0.31, 0.37)	
	30	0.03 (0.02, 0.03)	0.07 (0.06, 0.08)	0.15 (0.13, 0.16)	0.55 (0.48, 0.63)	0.34 (0.31, 0.37)	
	40	0.04 (0.04, 0.05)	0.12 (0.11, 0.14)	0.25 (0.23, 0.28)	0.53 (0.46, 0.61)	0.33 (0.30, 0.37)	
	50	0.08 (0.07, 0.09)	0.21 (0.19, 0.24)	0.37 (0.33, 0.42)	0.50 (0.43, 0.59)	0.32 (0.29, 0.36)	
	60	0.14 (0.12, 0.17)	0.31 (0.27, 0.36)	0.40 (0.35, 0.46)	0.45 (0.38, 0.54)	0.29 (0.26, 0.33)	
	70	0.19 (0.16, 0.23)	0.30 (0.25, 0.36)	- (- , -)	0.35 (0.28, 0.45)	0.23 (0.20, 0.27)	
80	0.15 (0.10, 0.20)	- (- , -)	- (- , -)	0.22 (0.14, 0.35)	0.15 (0.12, 0.21)		

Devcan Version 6.2.0, April 2006, National Cancer Institute (<http://srab.cancer.gov/devcan/>).

Source: Incidence data are from the SEER 17 areas (San Francisco, Connecticut, Detroit, Hawaii, Iowa, New Mexico, Seattle, Utah, Atlanta, San Jose-Monterey, Los Angeles, Alaska Native Registry, Rural Georgia, California excluding SF/SJM/LA, Kentucky, Louisiana and New Jersey). Mortality data are from the NCHS public use data file for the total US.

^a Underlying incidence and mortality data for American Indian/Alaska Native are based on the CHSDA (Contract Health Service Delivery Area) counties.

^b Hispanic is not mutually exclusive from whites, blacks, Asian/Pacific Islanders, and American Indians/Alaska Natives. Underlying incidence data for Hispanics are based on NHIA and exclude cases from the Alaska Native Registry and Kentucky. Underlying mortality data for Hispanics exclude deaths from Minnesota, New Hampshire and North Dakota.

- Statistic could not be calculated.

A percent or confidence interval value of 0.00 represents a value that is below 0.005.

Table III-9 - continued
 BRAIN AND OTHER NERVOUS SYSTEM CANCER (Invasive)

Risk of Being Diagnosed With Cancer in 10, 20 and 30 Years, Lifetime Risk of Being Diagnosed with Cancer, and
 Lifetime Risk of Dying from Cancer Given Cancer Free At Current Age
 Females, 2002-2004 By Race/Ethnicity

Race/ Ethnicity	Current Age	Risk of Being Diagnosed with Cancer				Risk of Dying from Cancer	
		+10 yrs Percent (95% C.I.)	+20 yrs Percent (95% C.I.)	+30 yrs Percent (95% C.I.)	Eventually Percent (95% C.I.)	Eventually Percent (95% C.I.)	
All Races	0	0.03 (0.03, 0.04)	0.05 (0.05, 0.06)	0.08 (0.07, 0.08)	0.53 (0.52, 0.55)	0.39 (0.38, 0.39)	
	10	0.02 (0.02, 0.02)	0.04 (0.04, 0.05)	0.08 (0.07, 0.08)	0.51 (0.49, 0.52)	0.38 (0.38, 0.39)	
	20	0.02 (0.02, 0.03)	0.05 (0.05, 0.06)	0.10 (0.09, 0.10)	0.49 (0.47, 0.50)	0.38 (0.37, 0.39)	
	30	0.03 (0.03, 0.03)	0.07 (0.07, 0.08)	0.14 (0.14, 0.15)	0.47 (0.45, 0.48)	0.38 (0.37, 0.38)	
	40	0.04 (0.04, 0.04)	0.11 (0.11, 0.12)	0.22 (0.21, 0.23)	0.44 (0.42, 0.45)	0.37 (0.36, 0.37)	
	50	0.07 (0.07, 0.07)	0.18 (0.17, 0.19)	0.31 (0.30, 0.32)	0.40 (0.39, 0.42)	0.35 (0.34, 0.36)	
	60	0.11 (0.11, 0.12)	0.25 (0.24, 0.26)	0.33 (0.32, 0.34)	0.35 (0.34, 0.36)	0.31 (0.30, 0.32)	
	70	0.15 (0.14, 0.16)	0.24 (0.23, 0.25)	- (- , -)	0.26 (0.25, 0.28)	0.24 (0.23, 0.24)	
80	0.12 (0.11, 0.13)	- (- , -)	- (- , -)	0.15 (0.14, 0.16)	0.14 (0.14, 0.15)		
White	0	0.03 (0.03, 0.04)	0.06 (0.05, 0.06)	0.08 (0.08, 0.09)	0.59 (0.57, 0.60)	0.42 (0.41, 0.43)	
	10	0.02 (0.02, 0.03)	0.05 (0.05, 0.05)	0.08 (0.08, 0.09)	0.56 (0.54, 0.57)	0.42 (0.41, 0.42)	
	20	0.03 (0.02, 0.03)	0.06 (0.06, 0.07)	0.11 (0.10, 0.11)	0.54 (0.52, 0.55)	0.41 (0.41, 0.42)	
	30	0.03 (0.03, 0.04)	0.08 (0.08, 0.09)	0.16 (0.15, 0.16)	0.51 (0.50, 0.53)	0.41 (0.40, 0.41)	
	40	0.05 (0.04, 0.05)	0.12 (0.12, 0.13)	0.24 (0.23, 0.25)	0.48 (0.46, 0.50)	0.40 (0.39, 0.40)	
	50	0.08 (0.07, 0.08)	0.20 (0.19, 0.21)	0.34 (0.33, 0.36)	0.44 (0.43, 0.46)	0.38 (0.37, 0.38)	
	60	0.13 (0.12, 0.13)	0.28 (0.27, 0.29)	0.36 (0.35, 0.38)	0.38 (0.36, 0.39)	0.33 (0.33, 0.34)	
	70	0.17 (0.16, 0.18)	0.26 (0.25, 0.28)	- (- , -)	0.28 (0.27, 0.29)	0.25 (0.25, 0.26)	
80	0.13 (0.12, 0.14)	- (- , -)	- (- , -)	0.15 (0.14, 0.16)	0.15 (0.14, 0.15)		
Black	0	0.03 (0.02, 0.04)	0.04 (0.03, 0.05)	0.05 (0.04, 0.06)	0.30 (0.27, 0.34)	0.20 (0.19, 0.21)	
	10	0.01 (0.01, 0.02)	0.03 (0.02, 0.03)	0.05 (0.04, 0.06)	0.28 (0.25, 0.32)	0.20 (0.19, 0.21)	
	20	0.01 (0.01, 0.02)	0.03 (0.03, 0.04)	0.06 (0.05, 0.07)	0.27 (0.24, 0.31)	0.19 (0.18, 0.21)	
	30	0.02 (0.02, 0.03)	0.05 (0.04, 0.05)	0.09 (0.07, 0.10)	0.26 (0.23, 0.29)	0.19 (0.18, 0.20)	
	40	0.02 (0.02, 0.03)	0.07 (0.06, 0.08)	0.12 (0.10, 0.14)	0.24 (0.21, 0.28)	0.19 (0.17, 0.20)	
	50	0.04 (0.04, 0.06)	0.10 (0.08, 0.12)	0.16 (0.14, 0.19)	0.23 (0.20, 0.26)	0.18 (0.17, 0.19)	
	60	0.06 (0.05, 0.08)	0.13 (0.10, 0.15)	0.18 (0.15, 0.21)	0.20 (0.17, 0.24)	0.16 (0.15, 0.18)	
	70	0.08 (0.06, 0.10)	0.14 (0.12, 0.18)	- (- , -)	0.17 (0.13, 0.21)	0.13 (0.12, 0.15)	
80	0.09 (0.07, 0.13)	- (- , -)	- (- , -)	0.13 (0.09, 0.17)	0.09 (0.08, 0.11)		

Devcan Version 6.2.0, April 2006, National Cancer Institute (<http://srab.cancer.gov/devcan/>).

Source: Incidence data are from the SEER 17 areas (San Francisco, Connecticut, Detroit, Hawaii, Iowa, New Mexico, Seattle, Utah, Atlanta, San Jose-Monterey, Los Angeles, Alaska Native Registry, Rural Georgia, California excluding SF/SJM/LA, Kentucky, Louisiana and New Jersey). Mortality data are from the NCHS public use data file for the total US.

- Statistic could not be calculated.

A percent or confidence interval value of 0.00 represents a value that is below 0.005.

Table III-9 - continued
 BRAIN AND OTHER NERVOUS SYSTEM CANCER (Invasive)

Risk of Being Diagnosed With Cancer in 10, 20 and 30 Years, Lifetime Risk of Being Diagnosed with Cancer, and
 Lifetime Risk of Dying from Cancer Given Cancer Free At Current Age
 Females, 2002-2004 By Race/Ethnicity

Race/ Ethnicity	Current Age	Risk of Being Diagnosed with Cancer				Risk of Dying from Cancer	
		+10 yrs Percent (95% C.I.)	+20 yrs Percent (95% C.I.)	+30 yrs Percent (95% C.I.)	Eventually Percent (95% C.I.)	Eventually Percent (95% C.I.)	
Asian/ Pacific Islander	0	0.03 (0.02, 0.04)	0.04 (0.03, 0.06)	0.06 (0.05, 0.07)	0.34 (0.29, 0.40)	0.20 (0.17, 0.26)	
	10	0.02 (0.01, 0.02)	0.03 (0.02, 0.04)	0.05 (0.04, 0.06)	0.31 (0.27, 0.38)	0.20 (0.17, 0.26)	
	20	0.01 (0.01, 0.02)	0.03 (0.03, 0.04)	0.06 (0.05, 0.07)	0.29 (0.25, 0.36)	0.20 (0.16, 0.25)	
	30	0.02 (0.01, 0.03)	0.04 (0.03, 0.05)	0.08 (0.07, 0.09)	0.28 (0.24, 0.35)	0.20 (0.16, 0.25)	
	40	0.02 (0.02, 0.03)	0.06 (0.05, 0.07)	0.13 (0.11, 0.15)	0.26 (0.22, 0.33)	0.19 (0.16, 0.25)	
	50	0.04 (0.03, 0.05)	0.10 (0.08, 0.13)	0.17 (0.14, 0.20)	0.24 (0.20, 0.31)	0.18 (0.15, 0.24)	
	60	0.07 (0.05, 0.09)	0.14 (0.11, 0.17)	0.20 (0.16, 0.24)	0.21 (0.17, 0.28)	0.16 (0.13, 0.22)	
	70	0.07 (0.05, 0.09)	0.14 (0.11, 0.18)	- (- , -)	0.15 (0.12, 0.22)	0.12 (0.09, 0.18)	
	80	0.08 (0.05, 0.12)	- (- , -)	- (- , -)	0.10 (0.06, 0.17)	0.09 (0.05, 0.16)	
American Indian/ Alaska Native ^a	0	0.02 (0.01, 0.07)	0.04 (0.02, 0.09)	0.05 (0.02, 0.11)	0.14 (0.07, 0.62)	0.14 (0.09, 0.28)	
	10	0.02 (0.00, 0.04)	0.03 (0.01, 0.07)	0.04 (0.01, 0.09)	0.12 (0.05, 0.61)	0.14 (0.08, 0.28)	
	20	0.01 (0.00, 0.05)	0.02 (0.01, 0.07)	0.03 (0.01, 0.08)	0.10 (0.04, 0.60)	0.14 (0.08, 0.28)	
	30	0.01 (0.00, 0.04)	0.01 (0.00, 0.05)	0.02 (0.00, 0.06)	0.09 (0.03, 0.59)	0.14 (0.08, 0.28)	
	40	0.01 (0.00, 0.04)	0.01 (0.00, 0.05)	0.06 (0.02, 0.16)	0.08 (0.02, 0.60)	0.13 (0.08, 0.28)	
	50	0.00 (0.00, 0.04)	0.06 (0.01, 0.16)	0.08 (0.02, 0.22)	0.08 (0.02, 0.61)	0.13 (0.08, 0.29)	
	60	0.05 (0.01, 0.16)	0.08 (0.02, 0.22)	0.08 (0.02, 0.27)	0.08 (0.02, 0.64)	0.12 (0.06, 0.28)	
	70	0.03 (0.00, 0.16)	0.03 (0.00, 0.23)	- (- , -)	0.03 (0.00, 0.68)	0.09 (0.04, 0.28)	
	80	0.00 (0.00, 0.25)	- (- , -)	- (- , -)	0.00 (0.00, 0.88)	0.03 (0.00, 0.29)	
Hispanic ^b	0	0.03 (0.03, 0.04)	0.05 (0.04, 0.06)	0.07 (0.06, 0.08)	0.49 (0.45, 0.55)	0.29 (0.27, 0.32)	
	10	0.02 (0.01, 0.02)	0.03 (0.03, 0.04)	0.06 (0.05, 0.07)	0.46 (0.42, 0.52)	0.29 (0.26, 0.32)	
	20	0.02 (0.01, 0.02)	0.04 (0.04, 0.05)	0.07 (0.07, 0.08)	0.44 (0.40, 0.50)	0.28 (0.26, 0.31)	
	30	0.03 (0.02, 0.03)	0.06 (0.05, 0.07)	0.12 (0.11, 0.14)	0.43 (0.38, 0.49)	0.28 (0.26, 0.31)	
	40	0.03 (0.03, 0.04)	0.10 (0.08, 0.11)	0.19 (0.17, 0.21)	0.41 (0.36, 0.47)	0.28 (0.25, 0.31)	
	50	0.07 (0.06, 0.08)	0.16 (0.14, 0.18)	0.28 (0.25, 0.32)	0.38 (0.34, 0.44)	0.27 (0.24, 0.30)	
	60	0.10 (0.08, 0.12)	0.22 (0.19, 0.26)	0.31 (0.27, 0.35)	0.32 (0.28, 0.38)	0.24 (0.22, 0.27)	
	70	0.14 (0.11, 0.16)	0.23 (0.19, 0.27)	- (- , -)	0.25 (0.21, 0.31)	0.19 (0.17, 0.23)	
	80	0.12 (0.09, 0.15)	- (- , -)	- (- , -)	0.14 (0.10, 0.21)	0.13 (0.10, 0.16)	

Devcan Version 6.2.0, April 2006, National Cancer Institute (<http://srab.cancer.gov/devcan/>).

Source: Incidence data are from the SEER 17 areas (San Francisco, Connecticut, Detroit, Hawaii, Iowa, New Mexico, Seattle, Utah, Atlanta, San Jose-Monterey, Los Angeles, Alaska Native Registry, Rural Georgia, California excluding SF/SJM/LA, Kentucky, Louisiana and New Jersey). Mortality data are from the NCHS public use data file for the total US.

^a Underlying incidence and mortality data for American Indian/Alaska Native are based on the CHSDA (Contract Health Service Delivery Area) counties.

^b Hispanic is not mutually exclusive from whites, blacks, Asian/Pacific Islanders, and American Indians/Alaska Natives. Underlying incidence data for Hispanics are based on NHIA and exclude cases from the Alaska Native Registry and Kentucky. Underlying mortality data for Hispanics exclude deaths from Minnesota, New Hampshire and North Dakota.

- Statistic could not be calculated.

A percent or confidence interval value of 0.00 represents a value that is below 0.005.

Table III-10
BRAIN AND OTHER NERVOUS SYSTEM CANCER (Invasive)

SEER INCIDENCE AND U.S. MORTALITY
AGE-ADJUSTED RATES AND TRENDS^a
 By Race/Ethnicity and Sex

SEER Incidence

RACE/ETHNICITY	Rate 2000-2004 ^b			Trend 1995-2004 ^c		
	Rate per 100,000 persons			APC (%)		
	Total	Males	Females	Total	Males	Females
All Races	6.4	7.7	5.4	-0.4	-0.5	-0.2
White	7.0	8.3	5.9	-0.2	-0.3	-0.1
White Hispanic ^d	5.4	6.2	4.8	0.6	2.2	-0.8
White Non-Hispanic ^d	7.5	8.9	6.2	-0.1	-0.3	0.2
Black	4.1	4.9	3.5	-0.2	-1.1	0.5
Asian/Pacific Islander	3.4	3.9	3.0	-0.4	-0.6	-0.3
Amer Ind/Alaska Nat ^e	2.8	3.5	2.2	-	-	-
Hispanic ^d	5.3	6.0	4.7	0.8	2.5*	-0.8

U.S. Mortality^f

RACE/ETHNICITY	Rate 2000-2004			Trend 1995-2004		
	Rate per 100,000 persons			APC (%)		
	Total	Males	Females	Total	Males	Females
All Races	4.4	5.4	3.6	-1.0*	-0.9*	-1.2*
White	4.8	5.8	3.9	-0.9*	-0.9*	-1.0*
White Hispanic ^d	3.0	3.5	2.5	-0.4	-0.9	0.1
White Non-Hispanic ^d	4.9	6.0	4.0	-0.8*	-0.7*	-0.9*
Black	2.6	3.2	2.2	-1.0*	-0.7	-1.4*
Asian/Pacific Islander	2.0	2.5	1.5	0.5	2.4	-1.6
Amer Ind/Alaska Nat						
Total U.S.	1.9	2.4	1.5	-2.2	-2.4	-
CHSDA Counties	2.1	2.6	1.8	-1.3	-1.3	-
Non-CHSDA Counties	1.5	2.2	1.0	-	-	-
Hispanic ^d	2.8	3.4	2.4	-0.3	-0.8	0.3

- The APC is the Annual Percent Change over the time interval.
- Statistic not shown. Rate based on less than 16 cases for the time interval. Trend based on less than 10 cases for at least one year within the time interval.
- a Rates are age-adjusted to the 2000 US Std Population (19 age groups - Census P25-1130). Trends are based on rates age-adjusted to the 2000 US Std Population (19 age groups - Census P25-1130).
- b Incidence data used in calculating the rates are from the 17 SEER areas (San Francisco, Connecticut, Detroit, Hawaii, Iowa, New Mexico, Seattle, Utah, Atlanta, San Jose-Monterey, Los Angeles, Alaska Native Registry, Rural Georgia, California excluding SF/SJM/LA, Kentucky, Louisiana and New Jersey).
- c Incidence data used in calculating the trends are from the 13 SEER areas (San Francisco, Connecticut, Detroit, Hawaii, Iowa, New Mexico, Seattle, Utah, Atlanta, San Jose-Monterey, Los Angeles, Alaska Native Registry and Rural Georgia).
- d Hispanic and Non-Hispanic are not mutually exclusive from whites, blacks, Asian/Pacific Islanders, and American Indians/Alaska Natives. Incidence data for Hispanics and Non-Hispanics are based on NHIA and exclude cases from the Alaska Native Registry and Kentucky. The 2000-2004 Hispanic and Non-Hispanic death rates exclude deaths from Minnesota, New Hampshire and North Dakota. The 1995-2004 Hispanic and Non-Hispanic mortality trends exclude deaths from Maine, Minnesota, New Hampshire, North Dakota, and Oklahoma.
- e Incidence data for American Indian/Alaska Native are based on the CHSDA(Contract Health Service Delivery Area) counties.
- f Mortality data are analyzed from a public use file provided by the National Center for Health Statistics (NCHS).
- * The APC is significantly different from zero (p<.05).

Table III-11
 BRAIN AND OTHER NERVOUS SYSTEM CANCER (Invasive)

AGE-ADJUSTED SEER INCIDENCE RATES^a
 By Registry, Race and Sex

	All Races			Whites			Blacks		
	Total	Males	Females	Total	Males	Females	Total	Males	Females
<u>SEER INCIDENCE RATES^a, 2000-2004</u>									
REGISTRY									
Atlanta & Rural Georgia	5.7	6.8	4.8	6.8	7.9	5.8	3.8	4.8	3.2
Atlanta	5.7	6.8	4.8	6.8	7.8	5.9	3.9	5.0	3.2
Rural Georgia	4.9	6.0	-	6.2	8.4	-	-	-	-
California	6.2	7.4	5.2	6.9	8.1	5.7	3.9	4.8	3.2
Greater Bay Area	6.1	7.4	5.0	6.9	8.5	5.6	4.1	5.1	3.2
San Francisco-Oakland	6.1	7.4	5.1	7.0	8.6	5.7	4.2	5.2	3.4
San Jose-Monterey	6.0	7.3	4.8	6.7	8.2	5.3	-	-	-
Los Angeles	5.5	6.7	4.6	6.3	7.6	5.2	3.8	4.7	3.2
Greater California	6.6	7.8	5.6	7.1	8.3	6.0	4.0	4.7	3.2
Connecticut	7.3	8.7	6.0	7.6	9.2	6.3	3.2	3.6	2.9
Detroit	6.5	7.6	5.5	7.1	8.3	6.0	4.7	5.2	4.3
Hawaii	4.4	5.1	3.9	7.4	8.6	6.5	-	-	-
Iowa	7.3	8.5	6.3	7.3	8.5	6.3	7.0	-	-
Kentucky	6.7	7.6	5.8	6.8	7.8	5.9	5.3	5.6	5.3
Louisiana	5.9	7.5	4.7	6.6	8.3	5.4	4.2	5.3	3.5
New Jersey	7.0	8.3	6.0	7.6	9.0	6.4	3.8	4.2	3.5
New Mexico	5.4	6.5	4.5	5.7	6.8	4.7	-	-	-
Seattle-Puget Sound	7.6	9.0	6.4	8.1	9.6	6.9	3.6	4.9	-
Utah	6.9	8.0	6.0	7.1	8.2	6.2	-	-	-
9 SEER Areas ^b	6.6	7.8	5.6	7.3	8.6	6.1	4.2	4.9	3.6
11 SEER Areas ^b	6.3	7.5	5.3	7.0	8.3	5.9	4.1	4.9	3.5
13 SEER Areas ^b	6.3	7.5	5.3	7.0	8.3	5.9	4.1	4.8	3.5
17 SEER Areas ^b	6.4	7.7	5.4	7.0	8.3	5.9	4.1	4.9	3.5

^a Rates are per 100,000 and are age-adjusted to the 2000 US Std Population (19 age groups - Census P25-1130)

^b The SEER 9 areas are San Francisco, Connecticut, Detroit, Hawaii, Iowa, New Mexico, Seattle, Utah and Atlanta.

The SEER 11 areas comprise the SEER 9 areas plus San Jose-Monterey and Los Angeles.

The SEER 13 areas comprise the SEER 11 areas plus the Alaska Native Registry and Rural Georgia.

The SEER 17 areas comprise the SEER 13 areas plus California excluding SF/SJM/LA, Kentucky, Louisiana and New Jersey

- Statistic not shown. Rate based on less than 16 cases for the time interval.

Table III-12
 BRAIN AND OTHER NERVOUS SYSTEM CANCER (Invasive)

AGE-ADJUSTED SEER DEATH RATES^a
 By Registry, Race and Sex

	All Races			Whites			Blacks		
	Total	Males	Females	Total	Males	Females	Total	Males	Females
<u>SEER DEATH RATES^a, 2000-2004</u>									
REGISTRY									
Atlanta & Rural Georgia	3.7	4.5	3.0	4.3	5.2	3.5	2.3	2.8	1.8
Atlanta	3.8	4.6	3.0	4.4	5.3	3.6	2.3	3.0	1.8
Rural Georgia	2.8	-	-	-	-	-	-	-	-
California	4.4	5.3	3.6	4.9	5.9	4.0	2.8	3.5	2.3
Greater Bay Area	3.9	4.9	3.2	4.6	5.6	3.7	2.9	3.6	2.4
San Francisco-Oakland	4.0	5.1	3.2	4.7	5.8	3.7	3.2	4.1	2.6
San Jose-Monterey	3.8	4.6	3.1	4.4	5.3	3.6	-	-	-
Los Angeles	4.1	5.1	3.3	4.7	5.8	3.8	3.0	3.7	2.5
Greater California	4.7	5.6	3.9	5.0	6.0	4.2	2.5	3.0	1.9
Connecticut	4.1	5.0	3.4	4.4	5.3	3.6	1.8	-	-
Detroit	4.3	5.3	3.5	4.8	5.8	3.9	3.0	3.7	2.5
Hawaii	2.9	3.7	2.2	4.8	5.8	4.2	-	-	-
Iowa	5.1	6.0	4.3	5.1	6.0	4.3	-	-	-
Kentucky	4.6	5.6	3.9	4.7	5.8	3.9	3.2	-	4.0
Louisiana	4.4	5.6	3.5	4.9	6.1	3.9	3.2	4.0	2.6
New Jersey	3.7	4.7	2.9	4.1	5.1	3.2	1.8	2.2	1.5
New Mexico	3.7	4.7	2.9	4.0	5.0	3.1	-	-	-
Seattle-Puget Sound	5.7	6.9	4.8	6.1	7.3	5.0	3.0	-	-
Utah	4.5	5.7	3.4	4.6	5.9	3.5	-	-	-
9 SEER Areas ^b	4.4	5.4	3.6	4.9	5.9	4.0	2.7	3.3	2.2
11 SEER Areas ^b	4.3	5.3	3.5	4.8	5.8	3.9	2.8	3.4	2.3
13 SEER Areas ^b	4.3	5.3	3.5	4.8	5.8	3.9	2.7	3.3	2.3
17 SEER Areas ^b	4.3	5.3	3.5	4.8	5.8	3.9	2.7	3.2	2.2
Total U.S.	4.4	5.4	3.6	4.8	5.8	3.9	2.6	3.2	2.2

^a NCHS public use data file for the total US. Rates are per 100,000 and are age-adjusted to the 2000 US Std Population (19 age groups - Census P25-1130).

^b The SEER 9 areas are San Francisco, Connecticut, Detroit, Hawaii, Iowa, New Mexico, Seattle, Utah and Atlanta.

The SEER 11 areas comprise the SEER 9 areas plus San Jose-Monterey and Los Angeles.

The SEER 13 areas comprise the SEER 11 areas plus the Alaska Native Registry and Rural Georgia.

The SEER 17 areas comprise the SEER 13 areas plus California excluding SF/SJM/LA, Kentucky, Louisiana and New Jersey

- Statistic not shown. Rate based on less than 16 cases for the time interval.

Table III-13
 BRAIN AND OTHER NERVOUS SYSTEM CANCER (Invasive)

AVERAGE ANNUAL AGE-ADJUSTED CANCER DEATH^a RATES BY STATE, ALL RACES, 2000-2004

Males and Females

State	Rate	SE	Rank	PD	State	Rate	SE	Rank	PD
TOTAL U.S.	4.4	0.02							
High Five States									
South Dakota	5.7	0.38	(01)	29.5 ^c					
Washington	5.7 ^b	0.14	(02)	29.5 ^c					
Tennessee	5.5 ^b	0.14	(03)	25.0 ^c					
Idaho	5.4	0.29	(04)	22.7 ^c					
Oregon	5.3 ^b	0.17	(05)	20.5 ^c					
Low Five States									
New Mexico	3.7	0.20	(47)	-15.9 ^c					
New Jersey	3.7 ^b	0.09	(48)	-15.9 ^c					
New York	3.7 ^b	0.06	(49)	-15.9 ^c					
District of Columbia	3.3	0.35	(50)	-25.0 ^c					
Hawaii	2.9 ^b	0.21	(51)	-34.1 ^c					
Alabama	4.5	0.14	(27)	2.3	Montana	4.9	0.32	(14)	11.4
Alaska	4.1	0.45	(43)	-6.8	Nebraska	5.1	0.24	(10)	15.9 ^c
Arizona	4.1	0.12	(44)	-6.8	Nevada	4.2	0.21	(39)	-4.5
Arkansas	5.2 ^b	0.19	(08)	18.2 ^c	New Hampshire	4.9	0.28	(16)	11.4
California	4.4	0.05	(34)	0.0	New Jersey	3.7 ^b	0.09	(48)	-15.9 ^c
Colorado	4.5	0.15	(31)	2.3	New Mexico	3.7	0.20	(47)	-15.9 ^c
Connecticut	4.1	0.15	(40)	-6.8	New York	3.7 ^b	0.06	(49)	-15.9 ^c
Delaware	4.6	0.33	(24)	4.5	North Carolina	4.5	0.11	(28)	2.3
District of Columbia	3.3	0.35	(50)	-25.0 ^c	North Dakota	4.6	0.37	(23)	4.5
Florida	4.3	0.07	(35)	-2.3	Ohio	4.5	0.09	(30)	2.3
Georgia	3.9 ^b	0.10	(46)	-11.4	Oklahoma	5.0	0.17	(12)	13.6
Hawaii	2.9 ^b	0.21	(51)	-34.1 ^c	Oregon	5.3 ^b	0.17	(05)	20.5 ^c
Idaho	5.4	0.29	(04)	22.7 ^c	Pennsylvania	4.2	0.08	(38)	-4.5
Illinois	4.1 ^b	0.08	(42)	-6.8	Rhode Island	5.0	0.29	(13)	13.6
Indiana	4.7	0.12	(19)	6.8	South Carolina	4.6	0.15	(25)	4.5
Iowa	5.1 ^b	0.18	(09)	15.9 ^c	South Dakota	5.7	0.38	(01)	29.5 ^c
Kansas	5.2 ^b	0.19	(07)	18.2 ^c	Tennessee	5.5 ^b	0.14	(03)	25.0 ^c
Kentucky	4.6	0.15	(21)	4.5	Texas	4.6	0.07	(26)	4.5
Louisiana	4.4	0.14	(33)	0.0	Utah	4.5	0.23	(29)	2.3
Maine	5.0	0.26	(11)	13.6	Vermont	4.3	0.36	(36)	-2.3
Maryland	4.1	0.13	(41)	-6.8	Virginia	4.0 ^b	0.11	(45)	-9.1
Massachusetts	4.3	0.11	(37)	-2.3	Washington	5.7 ^b	0.14	(02)	29.5 ^c
Michigan	4.8 ^b	0.10	(17)	9.1	West Virginia	4.4	0.21	(32)	0.0
Minnesota	4.9	0.14	(15)	11.4	Wisconsin	4.7	0.13	(20)	6.8
Mississippi	5.2 ^b	0.19	(06)	18.2 ^c	Wyoming	4.8	0.44	(18)	9.1
Missouri	4.6	0.12	(22)	4.5					

^a NCHS public use data file. Rates are per 100,000 and are age-adjusted to the 2000 US Std Population (19 age groups - Census P25-1130).

^b Difference between state rate and total U.S. rate is statistically significant ($p < .0002$).

^c Absolute percent difference between state rate and total U.S. rate is 15% or more.

SE Standard error of the rate.

PD Percent difference between state rate and total U.S. rate.

Table III-14
 BRAIN AND OTHER NERVOUS SYSTEM CANCER (Invasive)

AVERAGE ANNUAL AGE-ADJUSTED CANCER DEATH^a RATES BY STATE, ALL RACES, 2000-2004

Males

State	Rate	SE	Rank	PD	State	Rate	SE	Rank	PD
TOTAL U.S.	5.4	0.03							
High Five States									
South Dakota	7.6	0.64	(01)	40.7 ^c					
Washington	6.7 ^b	0.23	(02)	24.1 ^c					
Idaho	6.6	0.47	(03)	22.2 ^c					
Mississippi	6.5	0.33	(04)	20.4 ^c					
Rhode Island	6.5	0.51	(05)	20.4 ^c					
Low Five States									
New Mexico	4.7	0.34	(47)	-13.0					
New Jersey	4.7 ^b	0.15	(48)	-13.0					
New York	4.5 ^b	0.10	(49)	-16.7 ^c					
District of Columbia	4.1	0.60	(50)	-24.1 ^c					
Hawaii	3.7 ^b	0.35	(51)	-31.5 ^c					
Alabama	5.7	0.24	(21)	5.6	Montana	5.6	0.50	(23)	3.7
Alaska	4.8	0.73	(46)	-11.1	Nebraska	5.8	0.38	(16)	7.4
Arizona	4.8	0.20	(44)	-11.1	Nevada	4.9	0.32	(42)	-9.3
Arkansas	6.1	0.31	(11)	13.0	New Hampshire	6.3	0.46	(09)	16.7 ^c
California	5.3	0.09	(34)	-1.9	New Jersey	4.7 ^b	0.15	(48)	-13.0
Colorado	5.2	0.24	(38)	-3.7	New Mexico	4.7	0.34	(47)	-13.0
Connecticut	5.0	0.25	(41)	-7.4	New York	4.5 ^b	0.10	(49)	-16.7 ^c
Delaware	5.7	0.55	(22)	5.6	North Carolina	5.6	0.18	(24)	3.7
District of Columbia	4.1	0.60	(50)	-24.1 ^c	North Dakota	5.5	0.59	(31)	1.9
Florida	5.3	0.11	(36)	-1.9	Ohio	5.5	0.15	(29)	1.9
Georgia	4.8	0.18	(45)	-11.1	Oklahoma	6.2	0.28	(10)	14.8
Hawaii	3.7 ^b	0.35	(51)	-31.5 ^c	Oregon	6.4 ^b	0.28	(07)	18.5 ^c
Idaho	6.6	0.47	(03)	22.2 ^c	Pennsylvania	5.1	0.13	(39)	-5.6
Illinois	4.9 ^b	0.14	(43)	-9.3	Rhode Island	6.5	0.51	(05)	20.4 ^c
Indiana	5.6	0.20	(25)	3.7	South Carolina	5.4	0.25	(33)	0.0
Iowa	6.0	0.29	(13)	11.1	South Dakota	7.6	0.64	(01)	40.7 ^c
Kansas	6.3	0.32	(08)	16.7 ^c	Tennessee	6.5 ^b	0.23	(06)	20.4 ^c
Kentucky	5.6	0.25	(26)	3.7	Texas	5.7	0.12	(20)	5.6
Louisiana	5.6	0.25	(28)	3.7	Utah	5.7	0.38	(19)	5.6
Maine	6.0	0.43	(14)	11.1	Vermont	5.7	0.62	(17)	5.6
Maryland	5.3	0.21	(35)	-1.9	Virginia	5.1	0.18	(40)	-5.6
Massachusetts	5.2	0.19	(37)	-3.7	Washington	6.7 ^b	0.23	(02)	24.1 ^c
Michigan	5.9	0.16	(15)	9.3	West Virginia	5.5	0.35	(30)	1.9
Minnesota	6.1	0.23	(12)	13.0	Wisconsin	5.7	0.21	(18)	5.6
Mississippi	6.5	0.33	(04)	20.4 ^c	Wyoming	5.5	0.68	(32)	1.9
Missouri	5.6	0.21	(27)	3.7					

^a NCHS public use data file. Rates are per 100,000 and are age-adjusted to the 2000 US Std Population (19 age groups - Census P25-1130).

^b Difference between state rate and total U.S. rate is statistically significant ($p < .0002$).

^c Absolute percent difference between state rate and total U.S. rate is 15% or more.

SE Standard error of the rate.

PD Percent difference between state rate and total U.S. rate.

Table III-15
 BRAIN AND OTHER NERVOUS SYSTEM CANCER (Invasive)

AVERAGE ANNUAL AGE-ADJUSTED CANCER DEATH^a RATES BY STATE, ALL RACES, 2000-2004

Females

State	Rate	SE	Rank	PD	State	Rate	SE	Rank	PD
TOTAL U.S.	3.6	0.02							
High Five States									
Washington	4.8 ^b	0.18	(01)	33.3 ^c					
Tennessee	4.7 ^b	0.17	(02)	30.6 ^c					
Arkansas	4.4	0.24	(03)	22.2 ^c					
Nebraska	4.3	0.30	(04)	19.4 ^c					
Kansas	4.3	0.24	(05)	19.4 ^c					
Low Five States									
Vermont	3.0	0.42	(47)	-16.7 ^c					
New Jersey	2.9 ^b	0.11	(48)	-19.4 ^c					
New Mexico	2.9	0.24	(49)	-19.4 ^c					
District of Columbia	2.8	0.43	(50)	-22.2 ^c					
Hawaii	2.2 ^b	0.25	(51)	-38.9 ^c					
Alabama	3.6	0.17	(30)	0.0	Montana	4.3	0.41	(07)	19.4 ^c
Alaska	3.5	0.58	(33)	-2.8	Nebraska	4.3	0.30	(04)	19.4 ^c
Arizona	3.4	0.15	(42)	-5.6	Nevada	3.4	0.26	(41)	-5.6
Arkansas	4.4	0.24	(03)	22.2 ^c	New Hampshire	3.6	0.32	(29)	0.0
California	3.6	0.06	(31)	0.0	New Jersey	2.9 ^b	0.11	(48)	-19.4 ^c
Colorado	3.8	0.19	(20)	5.6	New Mexico	2.9	0.24	(49)	-19.4 ^c
Connecticut	3.4	0.19	(37)	-5.6	New York	3.0 ^b	0.07	(46)	-16.7 ^c
Delaware	3.7	0.41	(26)	2.8	North Carolina	3.7	0.13	(25)	2.8
District of Columbia	2.8	0.43	(50)	-22.2 ^c	North Dakota	3.8	0.46	(22)	5.6
Florida	3.5	0.08	(36)	-2.8	Ohio	3.6	0.11	(27)	0.0
Georgia	3.2	0.13	(43)	-11.1	Oklahoma	3.9	0.20	(16)	8.3
Hawaii	2.2 ^b	0.25	(51)	-38.9 ^c	Oregon	4.3	0.21	(06)	19.4 ^c
Idaho	4.2	0.36	(10)	16.7 ^c	Pennsylvania	3.5	0.10	(35)	-2.8
Illinois	3.5	0.10	(34)	-2.8	Rhode Island	3.7	0.35	(24)	2.8
Indiana	4.0	0.16	(14)	11.1	South Carolina	4.0	0.19	(15)	11.1
Iowa	4.3	0.22	(08)	19.4 ^c	South Dakota	4.1	0.44	(12)	13.9
Kansas	4.3	0.24	(05)	19.4 ^c	Tennessee	4.7 ^b	0.17	(02)	30.6 ^c
Kentucky	3.9	0.19	(17)	8.3	Texas	3.6	0.08	(28)	0.0
Louisiana	3.5	0.17	(32)	-2.8	Utah	3.4	0.27	(38)	-5.6
Maine	4.1	0.32	(11)	13.9	Vermont	3.0	0.42	(47)	-16.7 ^c
Maryland	3.2	0.15	(44)	-11.1	Virginia	3.1 ^b	0.13	(45)	-13.9
Massachusetts	3.4	0.14	(40)	-5.6	Washington	4.8 ^b	0.18	(01)	33.3 ^c
Michigan	3.8	0.12	(19)	5.6	West Virginia	3.4	0.25	(39)	-5.6
Minnesota	3.9	0.17	(18)	8.3	Wisconsin	3.8	0.16	(23)	5.6
Mississippi	4.2	0.23	(09)	16.7 ^c	Wyoming	4.0	0.56	(13)	11.1
Missouri	3.8	0.15	(21)	5.6					

^a NCHS public use data file. Rates are per 100,000 and are age-adjusted to the 2000 US Std Population (19 age groups - Census P25-1130).

^b Difference between state rate and total U.S. rate is statistically significant ($p < .0002$).

^c Absolute percent difference between state rate and total U.S. rate is 15% or more.

SE Standard error of the rate.

PD Percent difference between state rate and total U.S. rate.

Table III-16
BRAIN AND OTHER NERVOUS SYSTEM (Invasive)

Estimated United States Cancer Prevalence Counts^a on January 1, 2004
By Race/Ethnicity, Sex and Years Since Diagnosis

Years Since Diagnosis	0 to <5	5 to <10	10 to <15	15 to <20	20 to <25	0 to <14 ^e	0 to <29 ^e	>=29 ^g	Complete ^h
<u>Race/Sex</u>									
All Races ^b	38,349	21,518	17,187	12,032	6,865	74,262	100,542	14,540	115,082
Males	20,364	11,819	9,672	6,098	3,571	40,225	53,857	6,630	60,487
Females	17,985	9,699	7,515	5,934	3,294	34,037	46,685	7,910	54,595
White ^b	33,840	18,924	15,184	10,752	6,095	65,469	88,966	8,080	97,046
Males	18,168	10,465	8,516	5,376	3,150	35,692	47,836	4,447 ⁱ	52,283
Females	15,672	8,459	6,668	5,376	2,945	29,777	41,130	3,633 ⁱ	44,763
Black ^b	2,901	1,647	1,433	914	596	5,731	7,799	+	+
Males	1,450	875	796	495	339	2,984	4,070	+	+
Females	1,451	772	637	419	257	2,747	3,729	+	+
Asian/Pacific Islander ^c	982	532	+	+	+	1,821	+	+	+
Males	494	251	+	+	+	939	+	+	+
Females	488	281	+	+	+	882	+	+	+
Hispanic ^d	3,546	1,772	+	+	+	6,452	+	+	+
Males	1,871	892	+	+	+	3,363	+	+	+
Females	1,675	880	+	+	+	3,089	+	+	+

Estimated prevalence percent^a on January 1, 2004, of the SEER 11 population diagnosed in the previous 10 years
By Age at Prevalence, Race/Ethnicity and Sex

Age at Prevalence	Age Specific (Crude)										Age-Adjusted ^f
	All Ages	0-9	10-19	20-29	30-39	40-49	50-59	60-69	70-79	80+	All Ages
<u>Race/Sex</u>											
All Races ^c	0.0187%	0.0135%	0.0201%	0.0156%	0.0185%	0.0226%	0.0224%	0.0212%	0.0189%	0.0119%	0.0187%
Males	0.0204%	0.0133%	0.0219%	0.0163%	0.0198%	0.0246%	0.0254%	0.0242%	0.0233%	0.0154%	0.0205%
Females	0.0171%	0.0137%	0.0183%	0.0148%	0.0171%	0.0206%	0.0196%	0.0185%	0.0156%	0.0101%	0.0171%
White ^c	0.0209%	0.0147%	0.0223%	0.0171%	0.0211%	0.0255%	0.0251%	0.0238%	0.0206%	0.0120%	0.0209%
Males	0.0228%	0.0145%	0.0247%	0.0179%	0.0225%	0.0275%	0.0281%	0.0275%	0.0249%	0.0160%	0.0228%
Females	0.0189%	0.0149%	0.0198%	0.0161%	0.0195%	0.0235%	0.0221%	0.0204%	0.0172%	0.0099%	0.0191%
Black ^c	0.0117%	0.0108%	0.0131%	0.0114%	0.0101%	0.0119%	0.0134%	0.0127%	0.0107%	0.0092%	0.0116%
Males	0.0125%	0.0107%	0.0137%	0.0116%	0.0112%	0.0140%	0.0153%	0.0127%	0.0169%	-	0.0125%
Females	0.0109%	0.0109%	0.0125%	0.0111%	0.0091%	0.0101%	0.0120%	0.0127%	0.0067%	0.0137%	0.0108%
Asian/Pacific Islander ^c	0.0113%	0.0075%	0.0149%	0.0100%	0.0111%	0.0130%	0.0113%	0.0100%	0.0123%	0.0106%	0.0113%
Males	0.0115%	0.0077%	0.0146%	0.0097%	0.0107%	0.0127%	0.0130%	0.0091%	0.0157%	0.0163%	0.0117%
Females	0.0111%	0.0073%	0.0153%	0.0102%	0.0114%	0.0134%	0.0097%	0.0108%	0.0099%	0.0068%	0.0111%
Hispanic ^d	0.0132%	0.0104%	0.0146%	0.0084%	0.0131%	0.0186%	0.0169%	0.0192%	0.0174%	0.0094%	0.0143%
Males	0.0133%	0.0099%	0.0140%	0.0086%	0.0133%	0.0198%	0.0187%	0.0198%	0.0145%	0.0144%	0.0146%
Females	0.0131%	0.0108%	0.0152%	0.0080%	0.0129%	0.0175%	0.0152%	0.0187%	0.0195%	-	0.0140%

^a US 2004 cancer prevalence counts are based on 2004 cancer prevalence proportions from the SEER registries and 1/1/2004 US population estimates based on the average of 2003 and 2004 population estimates from the US Bureau of the Census. Prevalence was calculated using the First Malignant Primary Only for a person.

^{b c d} Statistics based on (b) SEER 9 Areas (c) SEER 11 Areas and Rural Georgia (d) NHIA for Hispanic for SEER 11 Areas and Rural Georgia.

^e Maximum limited-duration prevalence: 29 years for 1975-2004 SEER 9 data; 14 years for 1990-2004 SEER 11 data (used to calculate prevalence for Hispanics and Asian Pacific Islanders).

^f Percentages are age-adjusted to the 2000 US Standard Population (19 age groups - Census P25-1130) by 5-year age groups.

^{g h i} (g) Cases diagnosed more than 29 years ago were estimated using the completeness index method (Capocaccia et. al. 1997, Merrill et. al. 2000). (h) Complete prevalence is obtained by summing 0 to <29 and >=29. (i) Age-specific completeness index was approximated using empirical data from historical Connecticut tumor registry.

- Statistic not shown. Statistic based on fewer than 5 cases estimated alive in SEER for the time interval.

+ Not available.

SEER Incidence, Delay Adjusted Incidence and US Death Rates^a Brain and Other Nervous System Cancer, by Race and Sex

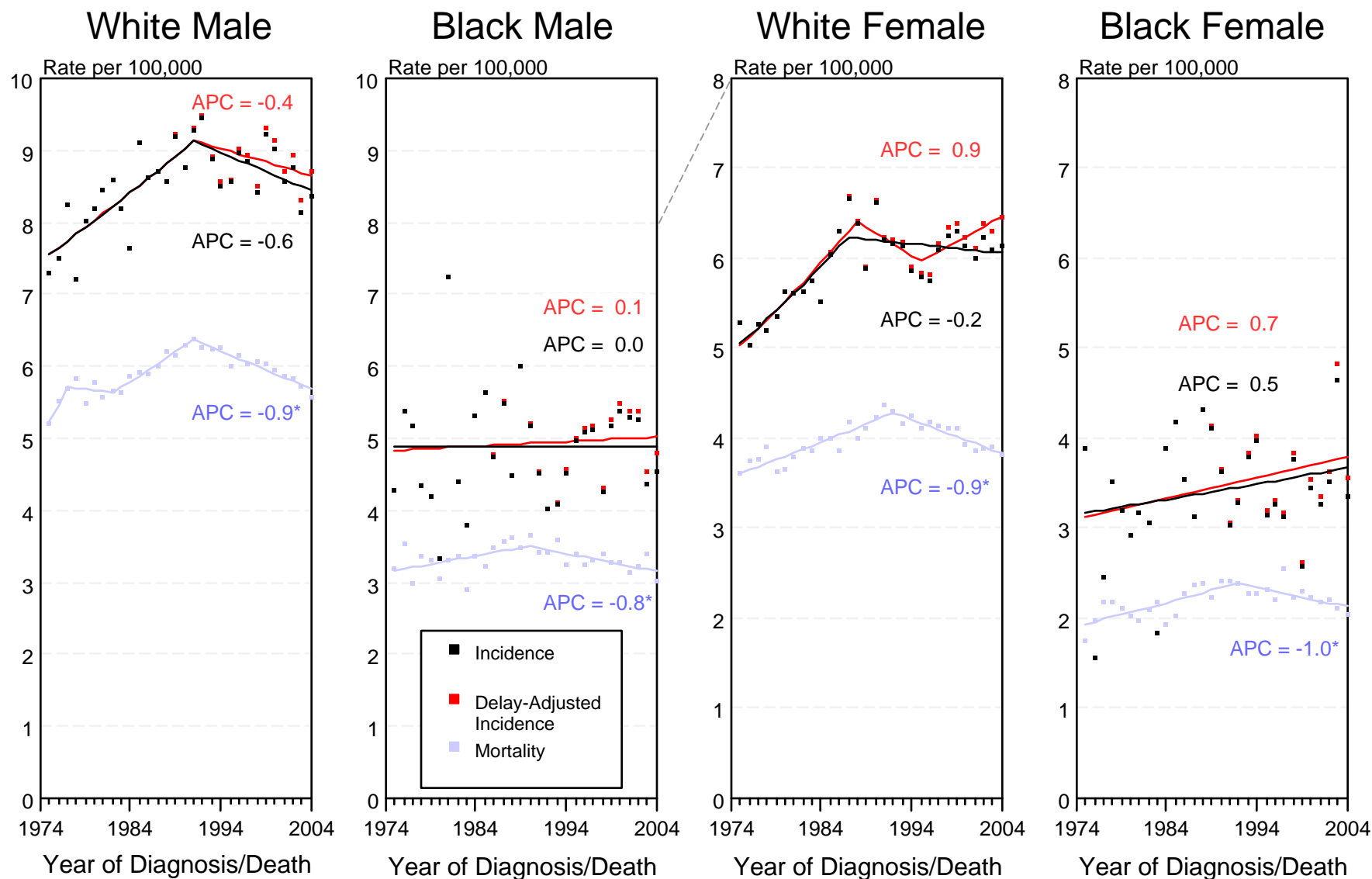


Figure III-1

^a Source: SEER 9 areas and NCHS public use data file for the total US. Rates are age-adjusted to the 2000 US Std Population (19 age groups - Census P25-1103). Regression lines and APCs are calculated using the Joinpoint Regression Program Version 3.0, April 2005, National Cancer Institute. The APC is the Annual Percent Change for the regression line segments. The APC shown on the graph is for the most recent trend.

* The APC is significantly different from zero ($p < 0.05$).

SEER Incidence and US Death Rates^a Brain and Other Nervous System Cancer, Both Sexes

Joinpoint Analyses for Whites and Blacks from 1975-2004
and for Asian/Pacific Islanders, American Indians/Alaska Natives and Hispanics from 1992-2004

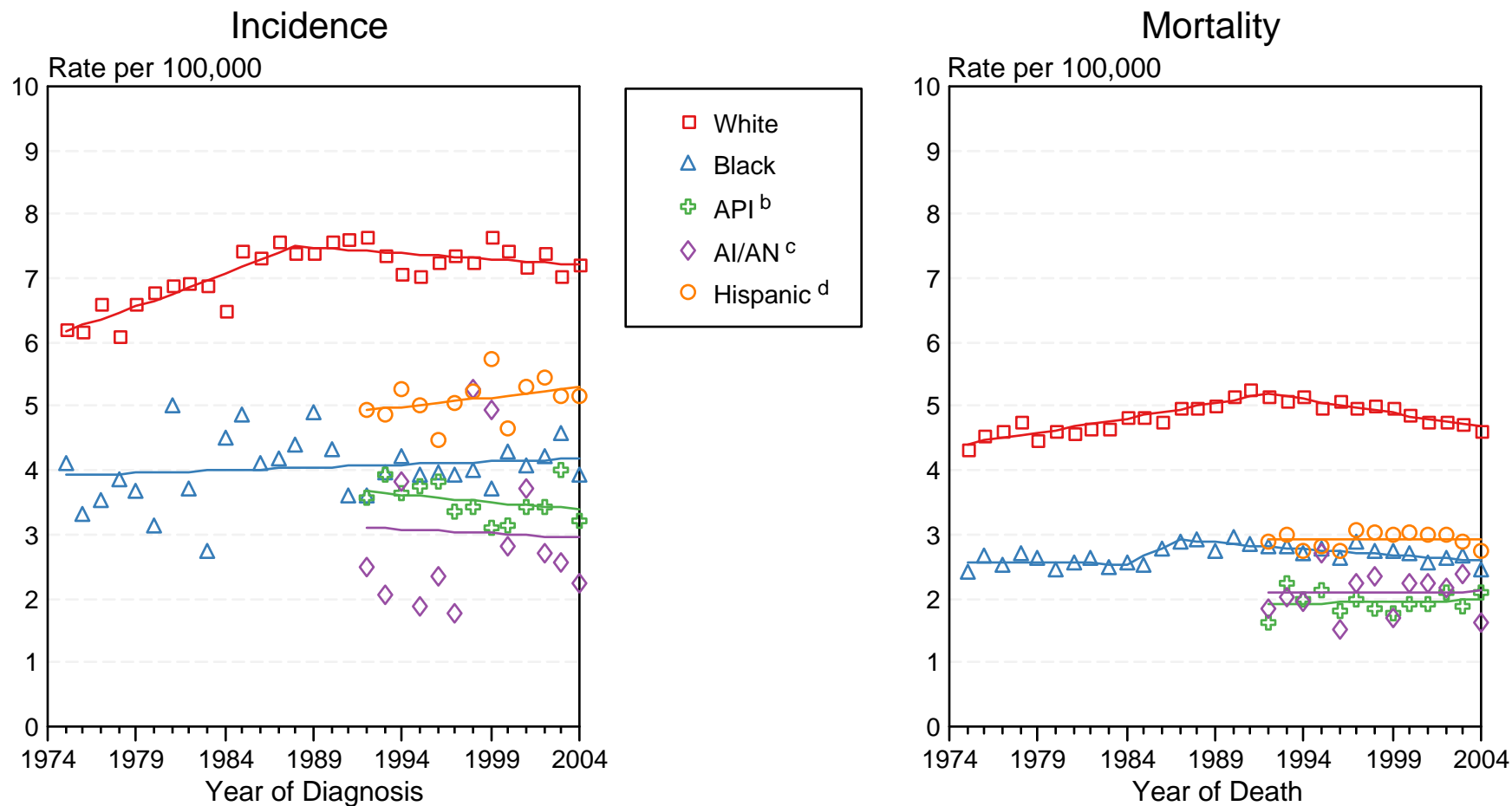


Figure III-2

Source: Incidence data for whites and blacks are from the SEER 9 areas (San Francisco, Connecticut, Detroit, Hawaii, Iowa, New Mexico, Seattle, Utah, Atlanta). Incidence data for Asian/Pacific Islanders, American Indians/Alaska Natives and Hispanics are from the SEER 13 Areas (SEER 9 Areas, San Jose-Monterey, Los Angeles, Alaska Native Registry and Rural Georgia). Mortality data are from NCHS public use data file for the total US.

^a Rates are age-adjusted to the 2000 US Std Population (19 age groups - Census P25-1103).

Regression lines are calculated using the Joinpoint Regression Program Version 3.0, April 2005, National Cancer Institute.

^b API = Asian/Pacific Islander.

^c AI/AN = American Indian/Alaska Native. Rates for American Indian/Alaska Native are based on the CHSDA(Contract Health Service Delivery Area) counties.

^d Hispanic is not mutually exclusive from whites, blacks, Asian/Pacific Islanders, and American Indians/Alaska Natives. Incidence data for Hispanics are based on NHIA and exclude cases from the Alaska Native Registry. Mortality data for Hispanics exclude cases from Connecticut, Maine, Maryland, Minnesota, New Hampshire, New York, North Dakota, Oklahoma, and Vermont.