

Table XV-1
LUNG AND BRONCHUS CANCER (Invasive)

TRENDS IN SEER INCIDENCE^a AND U.S. MORTALITY^b USING THE JOINPOINT REGRESSION PROGRAM, 1975-2003
WITH UP TO THREE JOINPOINTS BY RACE AND SEX

		Joinpoint Segment 1		Joinpoint Segment 2		Joinpoint Segment 3		Joinpoint Segment 4	
		Year	APC	Year	APC	Year	APC	Year	APC
<u>SEER Cancer Incidence^a</u>									
All Races	Male and Female	1975-1982	2.5*	1982-1991	1.0*	1991-2003	-0.8*		
All Races	Male	1975-1982	1.5*	1982-1991	-0.5*	1991-2003	-1.8*		
All Races	Female	1975-1982	5.5*	1982-1990	3.5*	1990-1998	1.0*	1998-2003	-0.5
White	Male and Female	1975-1982	2.5*	1982-1991	1.1*	1991-2003	-0.7*		
White	Male	1975-1981	1.5*	1981-1990	-0.2	1990-2003	-1.8*		
White	Female	1975-1982	5.6*	1982-1988	4.1*	1988-1997	1.6*	1997-2003	-0.3
Black	Male and Female	1975-1984	3.5*	1984-2003	-0.7*				
Black	Male	1975-1984	3.1*	1984-2003	-1.7*				
Black	Female	1975-1990	4.2*	1990-2003	0.5				
<u>SEER Delay-Adjusted Incidence^a</u>									
All Races	Male and Female	1975-1982	2.5*	1982-1991	0.9*	1991-2003	-0.7*		
All Races	Male	1975-1982	1.5*	1982-1991	-0.5*	1991-2003	-1.7*		
All Races	Female	1975-1982	5.6*	1982-1991	3.4*	1991-2003	0.5*		
White	Male and Female	1975-1988	1.9*	1988-2003	-0.3*				
White	Male	1975-1981	1.5*	1981-1989	-0.1	1989-2003	-1.6*		
White	Female	1975-1982	5.9*	1982-1991	3.5*	1991-2003	0.7*		
Black	Male and Female	1975-1984	3.5*	1984-2003	-0.6*				
Black	Male	1975-1984	3.1*	1984-2003	-1.6*				
Black	Female	1975-1989	4.4*	1989-2003	0.8*				
<u>U.S. Cancer Mortality^b</u>									
All Races	Male and Female	1975-1980	3.0*	1980-1990	1.8*	1990-1994	-0.1	1994-2003	-0.9*
All Races	Male	1975-1978	2.4*	1978-1984	1.2*	1984-1991	0.3*	1991-2003	-1.9*
All Races	Female	1975-1982	6.0*	1982-1990	4.2*	1990-1995	1.7*	1995-2003	0.3*
White	Male and Female	1975-1982	2.6*	1982-1990	1.7*	1990-1993	0.3	1993-2003	-0.7*
White	Male	1975-1980	1.9*	1980-1987	0.7*	1987-1991	0.1	1991-2003	-1.7*
White	Female	1975-1983	5.8*	1983-1990	4.1*	1990-1994	2.1*	1994-2003	0.5*
Black	Male and Female	1975-1981	3.5*	1981-1990	1.9*	1990-1995	-0.7*	1995-2003	-1.6*
Black	Male	1975-1982	2.9*	1982-1989	1.4*	1989-1993	-0.6	1993-2003	-2.6*
Black	Female	1975-1982	6.4*	1982-1992	3.7*	1992-2003	0.4*		

Joinpoint Regression Program Version 3.1, April 2006, National Cancer Institute. (<http://srab.cancer.gov/joinpoint/>).

The APC is the Annual Percent Change based on rates age-adjusted to the 2000 US Std Population (19 age groups - Census P25-1130).

^a Trends are from the SEER 9 areas (San Francisco, Connecticut, Detroit, Hawaii, Iowa, New Mexico, Seattle, Utah, and Atlanta).

^b Trends are from the NCHS public use data file for the total US.

* The APC is significantly different from zero (p<.05).

Table XV-2
 SMALL CELL LUNG AND BRONCHUS CANCER (Invasive) AND NON-SMALL CELL LUNG AND BRONCHUS CANCER (Invasive)

TRENDS IN SEER INCIDENCE^a USING THE JOINTPOINT REGRESSION PROGRAM, 1975-2003
 WITH UP TO THREE JOINTPOINTS BY RACE AND SEX

		<u>Joinpoint Segment 1</u>		<u>Joinpoint Segment 2</u>		<u>Joinpoint Segment 3</u>		<u>Joinpoint Segment 4</u>	
		Year	APC	Year	APC	Year	APC	Year	APC
<u>SEER Cancer Incidence for Small Cell Lung and Bronchus^a</u>									
All Races	Male and Female	1975-1982	6.1*	1982-1989	1.3*	1989-2003	-2.4*		
All Races	Male	1975-1980	6.4*	1980-1988	0.5	1988-2003	-3.4*		
All Races	Female	1975-1982	9.6*	1982-1991	2.9*	1991-2003	-1.7*		
White	Male and Female	1975-1982	6.3*	1982-1989	1.4*	1989-2003	-2.2*		
White	Male	1975-1980	6.2*	1980-1988	0.6	1988-2003	-3.3*		
White	Female	1975-1982	10.0*	1982-1990	3.4*	1990-2003	-1.2*		
Black	Male and Female	1975-1986	4.7*	1986-2003	-2.3*				
Black	Male	1975-1985	4.8*	1985-2003	-3.3*				
Black	Female	1975-1991	4.6*	1991-2003	-2.2				
<u>SEER Cancer Incidence for Non-Small Cell Lung and Bronchus^a</u>									
All Races	Male and Female	1975-1991	1.3*	1991-2003	-0.6*				
All Races	Male	1975-1982	0.9*	1982-1992	-0.4	1992-2003	-1.6*		
All Races	Female	1975-1988	4.3*	1988-1998	1.7*	1998-2003	-0.4		
White	Male and Female	1975-1990	1.5*	1990-2003	-0.3*				
White	Male	1975-1988	0.3*	1988-2003	-1.4*				
White	Female	1975-1988	4.4*	1988-1997	1.9*	1997-2003	0.0		
Black	Male and Female	1975-1984	3.2*	1984-2003	-0.6*				
Black	Male	1975-1984	2.9*	1984-2003	-1.5*				
Black	Female	1975-1990	4.1*	1990-2003	0.8*				

Joinpoint Regression Program Version 3.1, April 2006, National Cancer Institute. (<http://srab.cancer.gov/joinpoint/>).

The APC is the Annual Percent Change based on rates age-adjusted to the 2000 US Std Population (19 age groups - Census P25-1130).

^a Trends are from the SEER 9 areas (San Francisco, Connecticut, Detroit, Hawaii, Iowa, New Mexico, Seattle, Utah, and Atlanta).

* The APC is significantly different from zero (p<.05).

Table XV-3
LUNG AND BRONCHUS CANCER (Invasive)

AGE ADJUSTED SEER INCIDENCE^a RATES BY YEAR, RACE AND SEX

	All Races			Whites			Blacks		
	Total	Males	Females	Total	Males	Females	Total	Males	Females
<u>AGE-ADJUSTED RATES</u>									
YEAR OF DIAGNOSIS:									
1975	52.3	89.6	24.5	52.0	89.2	24.9	64.6	114.9	24.7
1976	55.4	93.8	27.3	54.6	92.8	27.3	72.3	131.0	28.6
1977	56.7	95.5	28.3	55.9	94.7	28.1	73.6	124.8	33.9
1978	57.8	96.7	29.7	57.3	95.9	29.9	74.5	130.7	31.6
1979	58.6	95.8	31.6	58.0	95.2	31.6	74.5	127.6	34.1
1980	60.6	100.0	32.2	59.4	97.7	32.4	86.6	151.5	38.3
1981	62.0	99.4	35.1	61.6	98.5	35.5	82.2	143.0	37.2
1982	63.3	100.7	36.7	63.1	99.7	37.7	80.4	141.1	35.7
1983	63.4	99.5	37.8	63.0	97.6	39.0	86.6	151.3	39.5
1984	65.5	102.0	39.4	64.3	99.9	39.6	93.1	159.2	44.8
1985	64.6	98.6	40.2	64.0	96.9	40.8	89.5	149.6	46.0
1986	65.8	99.1	42.3	65.2	97.4	42.9	92.9	156.2	48.6
1987	67.9	101.5	44.2	68.1	100.7	45.5	84.7	143.6	43.2
1988	68.0	98.7	46.3	68.2	97.9	47.7	88.1	144.9	48.0
1989	67.5	97.9	46.1	67.5	96.9	47.2	89.1	142.8	51.4
1990	68.0	96.9	47.7	68.2	96.1	48.9	86.6	136.9	52.1
1991	69.2	97.3	49.6	69.0	95.9	50.7	93.1	145.0	56.9
1992	69.4	97.1	49.8	68.8	94.8	51.0	93.8	148.8	55.7
1993	67.7	93.9	49.1	67.8	92.4	50.7	86.2	135.4	52.2
1994	67.2	90.9	50.5	67.3	90.1	51.6	86.9	131.2	56.2
1995	66.8	89.7	50.4	67.0	87.8	52.4	85.7	138.4	50.1
1996	66.4	87.9	51.1	66.7	86.6	53.0	83.9	127.8	54.9
1997	66.6	86.2	52.5	67.2	84.8	54.9	82.1	129.3	50.4
1998	67.4	87.9	52.9	68.0	86.5	55.0	87.0	130.4	57.7
1999	65.7	84.5	52.3	66.2	83.2	54.3	84.0	121.5	58.6
2000	63.9	81.7	51.1	64.5	80.5	53.2	79.1	112.7	56.6
2001	63.7	80.7	51.3	64.7	80.3	53.3	79.7	113.6	56.7
2002	63.4	79.6	51.8	64.1	78.9	53.6	80.8	111.0	60.7
2003	62.7	78.5	51.3	63.6	77.1	53.9	78.5	115.5	53.5
1975-2003	64.5	92.5	44.2	64.4	91.4	45.2	83.7	133.7	48.5

^a SEER 9 areas (San Francisco, Connecticut, Detroit, Hawaii, Iowa, New Mexico, Seattle, Utah, and Atlanta). Rates are per 100,000 and are age-adjusted to the 2000 US Std Population (19 age groups - Census P25-1130).

- Statistic not shown. Rate based on less than 16 cases for the time interval.

Table XV-4
 SMALL CELL LUNG AND BRONCHUS CANCER (Invasive)

AGE ADJUSTED SEER INCIDENCE^a RATES BY YEAR, RACE AND SEX

	All Races			Whites			Blacks		
	Total	Males	Females	Total	Males	Females	Total	Males	Females
<u>AGE-ADJUSTED RATES</u>									
YEAR OF DIAGNOSIS:									
1975	6.6	10.3	3.8	6.9	10.7	4.0	5.9	8.9	3.5
1976	7.1	11.4	3.8	7.1	11.5	3.9	8.2	12.8	4.8
1977	7.7	12.4	4.2	7.8	12.8	4.2	8.1	11.2	5.8
1978	8.6	13.4	5.0	8.9	13.7	5.3	7.8	13.9	3.1
1979	8.7	13.1	5.3	9.0	13.6	5.6	7.6	11.8	4.5
1980	9.1	14.2	5.2	9.3	14.4	5.5	10.0	17.5	4.4
1981	9.7	14.5	6.1	10.0	14.8	6.5	9.2	15.9	4.2
1982	10.4	14.9	7.1	10.7	15.3	7.6	9.6	15.9	4.9
1983	10.4	14.9	7.1	10.7	15.0	7.6	9.1	15.1	4.9
1984	10.7	15.2	7.4	11.0	15.6	7.8	10.4	15.0	6.9
1985	10.4	15.0	7.1	10.8	15.3	7.5	11.1	17.8	6.3
1986	11.2	15.5	8.0	11.5	16.0	8.3	12.3	17.7	8.4
1987	10.6	14.1	8.2	11.2	14.6	8.8	9.5	14.5	6.0
1988	11.4	15.3	8.5	11.9	15.6	9.2	10.5	17.9	5.3
1989	11.2	14.8	8.7	11.7	15.2	9.2	12.1	17.7	8.4
1990	10.7	13.8	8.4	11.3	14.5	9.1	9.4	13.7	6.2
1991	11.3	14.0	9.4	11.7	14.3	9.9	12.4	16.0	10.0
1992	10.5	13.4	8.4	11.0	13.8	9.0	10.2	13.4	8.0
1993	10.0	12.3	8.3	10.5	12.6	8.9	9.4	13.2	6.7
1994	9.8	11.7	8.4	10.2	11.9	9.1	9.9	13.6	7.4
1995	9.9	12.2	8.1	10.4	12.6	8.8	9.4	13.7	6.6
1996	9.7	12.1	8.0	10.3	12.4	8.6	8.8	12.0	6.7
1997	9.5	10.9	8.6	10.1	11.1	9.5	7.9	10.8	6.1
1998	9.3	10.8	8.1	9.8	11.2	8.8	9.4	12.1	7.4
1999	8.8	10.0	7.9	9.3	10.2	8.7	8.1	10.9	6.0
2000	8.7	10.3	7.6	9.2	10.7	8.1	9.4	11.5	7.9
2001	8.3	9.8	7.3	8.8	10.2	7.9	8.5	10.8	6.8
2002	8.2	9.3	7.5	8.9	9.8	8.3	7.3	9.9	5.8
2003	8.0	8.9	7.4	8.5	9.1	8.1	7.5	9.5	6.2
1975-2003	9.6	12.6	7.3	10.0	12.9	7.8	9.3	13.4	6.3

^a SEER 9 areas (San Francisco, Connecticut, Detroit, Hawaii, Iowa, New Mexico, Seattle, Utah, and Atlanta). Rates are per 100,000 and are age-adjusted to the 2000 US Std Population (19 age groups - Census P25-1130).
 - Statistic not shown. Rate based on less than 16 cases for the time interval.

Table XV-5
 NON-SMALL CELL LUNG AND BRONCHUS CANCER (Invasive)
 AGE ADJUSTED SEER INCIDENCE^a RATES BY YEAR, RACE AND SEX

	All Races			Whites			Blacks		
	Total	Males	Females	Total	Males	Females	Total	Males	Females
<u>AGE-ADJUSTED RATES</u>									
YEAR OF DIAGNOSIS:									
1975	45.6	79.2	20.8	45.1	78.5	20.9	58.7	106.0	21.2
1976	48.4	82.4	23.5	47.5	81.2	23.4	64.1	118.2	23.9
1977	49.0	83.1	24.1	48.0	81.9	23.8	65.4	113.6	28.1
1978	49.2	83.3	24.6	48.4	82.2	24.6	66.7	116.8	28.5
1979	49.9	82.7	26.2	49.0	81.5	26.0	66.9	115.8	29.6
1980	51.6	85.8	27.0	50.1	83.3	26.8	76.7	133.9	33.9
1981	52.3	84.9	29.0	51.5	83.6	29.1	73.0	127.1	33.0
1982	52.9	85.8	29.6	52.3	84.4	30.2	70.7	125.1	30.8
1983	53.1	84.6	30.8	52.3	82.6	31.4	77.5	136.3	34.6
1984	54.8	86.9	32.0	53.3	84.2	31.8	82.6	144.2	38.0
1985	54.2	83.7	33.1	53.2	81.6	33.4	78.4	131.8	39.8
1986	54.6	83.5	34.3	53.6	81.4	34.7	80.6	138.5	40.2
1987	57.3	87.4	36.0	56.9	86.1	36.7	75.2	129.1	37.2
1988	56.6	83.4	37.8	56.3	82.3	38.5	77.6	127.1	42.7
1989	56.3	83.0	37.4	55.9	81.8	38.0	77.0	125.1	43.0
1990	57.4	83.1	39.3	56.9	81.7	39.8	77.3	123.2	45.9
1991	57.9	83.3	40.2	57.3	81.6	40.8	80.7	128.9	46.9
1992	58.9	83.7	41.4	57.9	80.9	42.0	83.6	135.4	47.7
1993	57.7	81.5	40.8	57.3	79.8	41.7	76.8	122.2	45.5
1994	57.4	79.3	42.1	57.0	78.2	42.6	77.0	117.6	48.7
1995	56.9	77.5	42.2	56.6	75.2	43.6	76.2	124.7	43.5
1996	56.7	75.8	43.2	56.5	74.1	44.3	75.1	115.7	48.2
1997	57.0	75.4	43.9	57.0	73.7	45.4	74.2	118.5	44.3
1998	58.2	77.1	44.8	58.1	75.3	46.2	77.6	118.3	50.2
1999	56.9	74.4	44.4	56.9	72.9	45.5	75.9	110.6	52.6
2000	55.2	71.3	43.6	55.3	69.7	45.1	69.7	101.1	48.7
2001	55.4	70.9	44.0	55.8	70.1	45.4	71.2	102.7	49.9
2002	55.1	70.3	44.4	55.2	69.2	45.2	73.5	101.1	54.9
2003	54.7	69.7	44.0	55.0	68.0	45.8	71.0	106.1	47.3
1975-2003	54.9	80.0	36.9	54.4	78.5	37.3	74.5	120.2	42.2

^a SEER 9 areas (San Francisco, Connecticut, Detroit, Hawaii, Iowa, New Mexico, Seattle, Utah, and Atlanta). Rates are per 100,000 and are age-adjusted to the 2000 US Std Population (19 age groups - Census P25-1130).
 - Statistic not shown. Rate based on less than 16 cases for the time interval.

Table XV-6
LUNG AND BRONCHUS CANCER (Invasive)

AGE-ADJUSTED U.S. DEATH^a RATES BY YEAR, RACE AND SEX

	All Races			Whites			Blacks		
	Total	Males	Females	Total	Males	Females	Total	Males	Females
<u>AGE-ADJUSTED RATES</u>									
YEAR OF DEATH:									
1975	42.6	76.4	17.6	42.1	75.5	17.7	49.3	91.0	17.3
1976	44.2	78.5	19.0	43.7	77.6	19.1	51.1	94.0	18.5
1977	45.5	80.4	20.0	44.8	79.1	20.1	54.6	100.8	19.9
1978	46.9	82.1	21.4	46.3	80.8	21.6	55.3	101.6	20.7
1979	47.7	82.9	22.3	47.1	81.6	22.4	56.4	102.9	22.2
1980	49.4	84.7	24.1	48.8	83.3	24.2	59.2	106.7	24.6
1981	50.0	85.2	24.9	49.3	83.5	25.1	60.6	109.7	25.1
1982	51.4	86.8	26.5	50.8	85.2	26.7	62.3	112.5	26.3
1983	52.4	87.0	28.1	51.7	85.4	28.3	63.7	112.8	28.7
1984	53.4	88.2	28.9	52.6	86.2	29.3	65.1	118.0	28.0
1985	54.3	88.5	30.4	53.7	86.7	30.8	65.8	117.5	29.6
1986	55.0	89.0	31.4	54.4	87.0	31.8	67.0	119.2	31.0
1987	56.2	90.0	32.7	55.6	88.1	33.0	68.6	121.8	32.5
1988	57.0	89.9	34.1	56.4	87.9	34.6	69.2	122.2	33.5
1989	57.9	89.8	35.8	57.2	87.6	36.3	71.0	124.7	34.9
1990	58.9	90.6	36.8	58.2	88.4	37.3	72.1	125.2	36.5
1991	59.0	89.9	37.6	58.4	87.8	38.1	71.6	123.6	37.2
1992	58.9	88.0	38.7	58.3	86.0	39.2	71.4	121.1	38.6
1993	59.1	87.6	39.3	58.7	85.5	40.0	71.1	122.0	37.7
1994	58.5	85.7	39.6	58.2	83.8	40.3	70.2	118.6	38.6
1995	58.4	84.4	40.3	58.1	82.6	41.0	69.3	116.1	38.8
1996	57.9	82.8	40.4	57.7	81.2	41.2	68.3	113.2	39.1
1997	57.5	81.3	40.8	57.3	79.8	41.5	67.9	110.2	40.5
1998	57.1	79.9	41.0	56.9	78.5	41.7	66.9	107.4	40.7
1999	55.4	77.0	40.1	55.3	75.7	40.9	65.0	103.6	40.0
2000	55.8	76.5	41.1	56.0	75.4	42.1	63.8	101.0	39.7
2001	55.3	75.2	41.0	55.5	74.3	42.0	62.7	99.4	38.9
2002	55.0	73.6	41.6	55.3	72.8	42.6	62.3	95.8	40.3
2003	54.2	71.9	41.2	54.5	71.2	42.2	61.2	93.1	40.3
1975-2003	54.5	83.5	33.9	54.1	82.0	34.4	64.6	110.1	33.5

^a NCHS public use data file for the total US. Rates are per 100,000 and are age-adjusted to the 2000 US Std Population (19 age groups - Census P25-1130).

- Statistic not shown. Rate based on less than 16 cases for the time interval.

Table XV-7
LUNG AND BRONCHUS CANCER (Invasive)

SEER INCIDENCE^a AND U.S. DEATH^b RATES, AGE-ADJUSTED AND AGE-SPECIFIC RATES, BY RACE AND SEX

	All Races			Whites			Blacks		
	Total	Males	Females	Total	Males	Females	Total	Males	Females
<u>SEER INCIDENCE</u>									
<u>AGE AT DIAGNOSIS</u>									
AGE-ADJUSTED RATES, 2000-2003									
All ages	64.8	82.1	52.3	66.0	81.7	54.7	76.9	112.2	53.1
Under 65	22.4	25.6	19.3	22.3	24.7	20.0	32.5	43.8	23.1
65 and over	358.1	472.0	280.1	368.1	476.0	294.2	384.3	584.9	260.6
All ages(IARC world std) ^c	41.6	51.2	34.1	42.4	50.8	35.8	51.5	73.1	35.8
AGE-SPECIFIC RATES, 2000-2003									
<1	-	-	-	-	-	-	-	-	-
1-4	-	-	-	-	-	-	-	-	-
5-9	-	-	-	-	-	-	-	-	-
10-14	-	-	-	-	-	-	-	-	-
15-19	0.1	-	0.2	0.2	-	-	-	-	-
20-24	0.3	0.3	0.3	0.3	0.3	0.3	-	-	-
25-29	0.5	0.5	0.6	0.6	0.6	0.6	-	-	-
30-34	1.2	1.2	1.3	1.2	1.1	1.3	1.2	1.3	-
35-39	3.9	3.6	4.2	3.8	3.4	4.2	4.9	4.5	5.3
40-44	11.6	11.8	11.5	11.2	10.9	11.4	18.5	21.2	16.1
45-49	25.8	28.3	23.4	24.8	26.3	23.4	43.8	55.2	33.8
50-54	53.6	60.8	46.7	52.3	57.3	47.4	87.8	115.9	64.0
55-59	110.0	126.5	94.5	109.4	121.1	98.1	165.6	229.8	112.2
60-64	194.7	232.3	160.4	199.1	229.4	170.9	248.3	351.6	165.3
65-69	292.6	355.8	238.6	302.9	360.2	252.7	340.1	475.1	237.2
70-74	383.7	484.3	303.8	399.3	492.0	324.2	406.7	593.3	277.3
75-79	428.0	568.2	329.9	439.5	572.5	345.9	455.3	697.5	305.1
80-84	394.5	544.5	301.4	400.2	543.8	311.2	409.1	666.5	270.0
85+	286.6	452.7	212.1	287.4	452.9	214.5	283.6	520.6	189.9
<u>U.S. MORTALITY</u>									
<u>AGE AT DEATH</u>									
AGE-ADJUSTED RATES, 2000-2003									
All ages	55.1	74.2	41.2	55.3	73.4	42.2	62.5	97.2	39.8
Under 65	17.6	21.6	13.8	17.3	20.7	14.0	24.1	34.4	15.7
65 and over	314.1	438.2	230.5	318.1	437.3	237.0	327.7	531.3	206.7
All ages(IARC world std) ^c	34.4	45.0	26.0	34.5	44.3	26.7	40.7	61.6	25.9
AGE-SPECIFIC RATES, 2000-2003									
<1	-	-	-	-	-	-	-	-	-
1-4	-	-	-	-	-	-	-	-	-
5-9	-	-	-	-	-	-	-	-	-
10-14	-	-	-	-	-	-	-	-	-
15-19	0.0	-	-	0.0	-	-	-	-	-
20-24	0.1	0.1	0.1	0.1	0.1	0.1	-	-	-
25-29	0.2	0.2	0.2	0.2	0.2	0.2	0.2	-	-
30-34	0.6	0.7	0.6	0.7	0.7	0.6	0.7	0.7	0.6
35-39	2.7	2.8	2.7	2.7	2.6	2.7	3.6	4.2	3.1
40-44	9.1	10.0	8.2	8.7	9.2	8.1	14.1	18.0	10.7
45-49	20.7	24.5	17.1	19.5	22.5	16.5	33.9	45.0	24.4
50-54	41.8	51.4	32.7	40.3	48.1	32.7	64.3	92.0	40.8
55-59	87.3	108.3	67.5	86.2	104.2	69.0	119.8	175.2	74.3
60-64	154.0	193.4	118.3	154.9	190.3	122.3	187.2	275.5	117.8
65-69	237.2	306.1	177.8	240.1	303.9	184.0	268.7	405.1	167.7
70-74	320.6	426.8	236.0	325.3	426.1	243.5	341.1	527.9	216.1
75-79	372.5	515.3	272.0	376.7	513.0	279.5	390.0	637.3	241.9
80-84	374.7	545.3	271.9	379.3	545.2	278.5	364.8	630.5	227.9
85+	299.7	496.3	216.1	302.9	499.4	219.3	279.1	518.9	187.7

^a SEER 17 areas. Rates are per 100,000 and are age-adjusted to the 2000 US Std Population (19 age groups - Census P25-1130), unless noted.

^b NCHS public use data file for the total US. Rates are per 100,000 and are age-adjusted to the 2000 US Std Population (19 age groups - Census P25-1130), unless noted.

^c Rates are per 100,000 and are age-adjusted to the IARC world standard population.

- Statistic not shown. Rate based on less than 16 cases for the time interval.

Table XV-8
 SMALL CELL LUNG AND BRONCHUS CANCER (Invasive) and NON-SMALL CELL LUNG AND BRONCHUS CANCER (Invasive)

SEER INCIDENCE^a RATES, AGE-ADJUSTED AND AGE-SPECIFIC RATES, BY RACE AND SEX

	All Races			Whites			Blacks		
	Total	Males	Females	Total	Males	Females	Total	Males	Females
<u>SMALL CELL LUNG AND BRONCHUS CANCER</u>									
<u>AGE AT DIAGNOSIS</u>									
AGE-ADJUSTED RATES, 2000-2003									
All ages	8.4	9.8	7.5	9.0	10.2	8.2	7.7	10.2	6.1
Under 65	3.3	3.5	3.1	3.6	3.7	3.5	3.3	4.1	2.7
65 and over	43.7	52.9	37.4	46.4	55.0	40.6	38.2	52.0	29.8
All ages(IARC world std) ^b	5.8	6.5	5.2	6.2	6.8	5.8	5.3	6.8	4.3
AGE-SPECIFIC RATES, 2000-2003									
<1	-	-	-	-	-	-	-	-	-
1-4	-	-	-	-	-	-	-	-	-
5-9	-	-	-	-	-	-	-	-	-
10-14	-	-	-	-	-	-	-	-	-
15-19	-	-	-	-	-	-	-	-	-
20-24	-	-	-	-	-	-	-	-	-
25-29	-	-	-	-	-	-	-	-	-
30-34	0.1	-	-	0.1	-	-	-	-	-
35-39	0.4	0.4	0.4	0.4	0.4	0.4	-	-	-
40-44	1.3	1.2	1.4	1.4	1.3	1.5	1.3	1.3	1.2
45-49	3.5	3.6	3.4	3.8	3.9	3.8	3.4	4.2	2.7
50-54	7.9	8.7	7.1	8.4	9.1	7.8	8.9	11.1	7.0
55-59	17.2	17.9	16.6	18.3	18.3	18.3	18.5	23.0	14.7
60-64	30.5	33.0	28.2	33.2	34.9	31.7	27.8	34.6	22.4
65-69	43.1	47.1	39.7	46.6	49.5	44.1	38.9	49.2	31.0
70-74	52.0	60.0	45.7	56.2	63.6	50.3	38.8	45.2	34.3
75-79	52.1	65.3	42.9	54.8	67.3	46.0	48.5	69.0	35.9
80-84	38.7	50.6	31.3	40.0	51.5	32.9	36.5	57.4	25.3
85+	18.7	32.4	12.5	18.9	32.6	12.9	19.3	36.6	12.5
<u>NON-SMALL CELL LUNG AND BRONCHUS CANCER</u>									
<u>AGE AT DIAGNOSIS</u>									
AGE-ADJUSTED RATES, 2000-2003									
All ages	56.4	72.3	44.8	57.0	71.5	46.5	69.2	102.0	47.0
Under 65	19.0	22.1	16.2	18.7	21.0	16.5	29.2	39.7	20.4
65 and over	314.4	419.1	242.7	321.7	420.9	253.5	346.1	532.9	230.8
All ages(IARC world std) ^b	35.9	44.7	28.9	36.2	44.1	30.0	46.2	66.3	31.5
AGE-SPECIFIC RATES, 2000-2003									
<1	-	-	-	-	-	-	-	-	-
1-4	-	-	-	-	-	-	-	-	-
5-9	-	-	-	-	-	-	-	-	-
10-14	-	-	-	-	-	-	-	-	-
15-19	0.1	-	0.2	0.2	-	-	-	-	-
20-24	0.3	0.3	0.3	0.3	0.3	0.3	-	-	-
25-29	0.5	0.5	0.6	0.5	0.5	0.6	-	-	-
30-34	1.1	1.1	1.2	1.1	1.0	1.2	1.2	1.3	-
35-39	3.5	3.2	3.8	3.4	3.0	3.7	4.5	4.3	4.8
40-44	10.3	10.5	10.1	9.8	9.6	9.9	17.3	19.9	14.9
45-49	22.3	24.7	20.0	21.0	22.4	19.6	40.4	51.0	31.1
50-54	45.7	52.0	39.6	43.9	48.2	39.6	79.0	104.8	57.0
55-59	92.7	108.6	77.9	91.0	102.8	79.8	147.2	206.9	97.5
60-64	164.3	199.4	132.2	165.9	194.5	139.2	220.5	317.0	142.9
65-69	249.5	308.6	198.8	256.3	310.7	208.7	301.2	425.9	206.2
70-74	331.7	424.3	258.1	343.1	428.4	273.9	368.0	548.1	243.0
75-79	375.9	502.9	287.0	384.7	505.2	299.9	406.7	628.6	269.2
80-84	355.8	493.9	270.2	360.2	492.4	278.3	372.6	609.1	244.7
85+	267.9	420.3	199.6	268.5	420.3	201.6	264.3	484.0	177.4

^a SEER 17 areas. Rates are per 100,000 and are age-adjusted to the 2000 US Std Population (19 age groups - Census P25-1130), unless noted.

^b Rates are per 100,000 and are age-adjusted to the IARC world standard population.

- Statistic not shown. Rate based on less than 16 cases for the time interval.

Table XV-9
LUNG AND BRONCHUS CANCER (Invasive)

SURVIVAL RATES, BY RACE, SEX, DIAGNOSIS YEAR, STAGE AND AGE

	All Races			Whites			Blacks		
	Total	Males	Females	Total	Males	Females	Total	Males	Females
5-YR RELATIVE SURVIVAL RATES									
YEAR OF DIAGNOSIS:									
1960-1963 ^a	-	-	-	8	7	11	5	5	6
1970-1973 ^a	-	-	-	10	9	14	7	6	10
1975-1977 ^b	12.7	11.4	15.8	12.8	11.5	16.0	11.5	10.7	14.0
1978-1980 ^b	13.3	11.8	16.6	13.4	12.0	16.6	12.0	10.0	18.0
1981-1983 ^b	13.7	12.1	16.8	13.9	12.3	17.0	11.7	10.5	14.9
1984-1986 ^b	13.3	11.6	16.3	13.5	11.7	16.7	11.4	10.6	13.0
1987-1989 ^b	13.5	12.4	15.4	13.8	12.5	15.8	11.2	11.1	11.5
1990-1992 ^b	14.2	12.6	16.4	14.6	13.0	16.7	10.8	9.6	12.9
1993-1995 ^b	15.0	13.1	17.4	15.3	13.3	17.8	13.2	11.7	15.8
1996-2002 ^b	15.5 ^e	13.6 ^e	17.8 ^e	15.8 ^e	13.7 ^e	18.0 ^e	12.8 ^e	11.3	14.9
5-YR PERIOD SURVIVAL RATES^{cd}									
YEAR OF DIAGNOSIS:									
1996-2002	15.2	13.2	17.7	15.6	13.4	17.9	12.4	10.7	14.8
STAGE DISTRIBUTION (%) 1996-2002^c									
All Stages									
Number of cases	173,341	95,984	77,357	144,196	78,166	66,030	18,367	11,115	7,252
Percent	100%	100%	100%	100%	100%	100%	100%	100%	100%
Localized	16	15	18	16	15	18	14	13	16
Regional	37	38	37	37	38	36	39	38	39
Distant	39	40	37	39	40	37	41	42	38
Unstaged	8	7	8	8	8	8	7	6	7
5-YR RELATIVE SURVIVAL RATES, 1996-2002^c									
AGE AT DIAGNOSIS:									
<45	22.2	19.4	25.2	24.5	21.7	27.3	14.2	11.3	17.8
45-54	17.8	14.5	22.2	18.4	14.6	23.2	14.8	12.9	17.8
55-64	17.0	14.6	20.1	17.5	15.1	20.5	13.0	11.1	16.2
65-74	15.2	13.2	17.4	15.4	13.4	17.6	11.2	9.6	13.4
75+	10.4	9.5	11.3	10.6	9.6	11.5	8.7	7.6	9.6
Under 65	17.6	14.9	21.2	18.3	15.4	21.8	13.8	11.8	16.9
65 and over	13.2	11.8	14.7	13.4	12.0	14.9	10.4	9.1	12.0
STAGE:									
All Stages	15.0	13.1	17.2	15.3	13.4	17.4	12.2	10.5	14.5
Localized	49.3	45.3	53.0	49.9	46.0	53.3	42.0	38.7	45.8
Regional	15.5	14.4	16.9	15.7	14.6	17.1	13.2	11.6	15.5
Distant	2.1	1.9	2.3	2.0	1.7	2.3	2.0	2.0	1.9
Unstaged	7.9	7.7	8.2	7.7	7.3	8.0	7.6	7.6	7.6

^a Rates are based on End Results data from a series of hospital registries and one population-based registry.

^b Rates are from the SEER 9 areas (San Francisco, Connecticut, Detroit, Hawaii, Iowa, New Mexico, Seattle, Utah, Atlanta).

Rates are based on follow-up of patients into 2003.

^c Rates are from the SEER 17 areas (San Francisco, Connecticut, Detroit, Hawaii, Iowa, New Mexico, Seattle, Utah, Atlanta, San Jose-Monterey, Los Angeles, Alaska Native Registry, Rural Georgia, California excluding SF/SJM/LA, Kentucky, Louisiana and New Jersey). California excluding SF/SJM/LA, Kentucky, Louisiana, and New Jersey contribute cases for diagnosis years 2000-2002. The remaining 13 SEER Areas contribute cases for the entire period 1996-2002. Rates are based on follow-up of patients into 2003.

^d Period survival provides a more up-to-date estimate of survival by piecing together the most recent conditional survival estimates from several cohorts. It is computed here using three calendar year blocks (2000-2002: 0-1 year survival), (1999-2001: 1-2 year survival), (1998-2000: 2-3 year survival), (1997-1999: 3-4 year survival), (1996-1998: 4-5 years survival).

^e The difference in rates between 1975-1977 and 1996-2002 is statistically significant ($p < .05$).

^f The standard error of the survival rate is between 5 and 10 percentage points.

^g The standard error of the survival rate is greater than 10 percentage points.

- Statistic could not be calculated due to fewer than 16 cases during the time period.

Table XV-10
SMALL CELL LUNG AND BRONCHUS CANCER (Invasive)

SURVIVAL RATES, BY RACE, SEX, DIAGNOSIS YEAR, STAGE AND AGE

	All Races			Whites			Blacks		
	Total	Males	Females	Total	Males	Females	Total	Males	Females
<u>5-YR RELATIVE SURVIVAL RATES</u>									
YEAR OF DIAGNOSIS:									
1975-1977 ^a	3.7	3.2	4.8	3.8	3.2	5.0	3.8	3.9	3.6
1978-1980 ^a	4.4	3.3	6.5	4.5	3.4	6.5	3.2	2.4	5.0
1981-1983 ^a	4.8	3.8	6.5	4.9	3.9	6.3	5.6	4.3	8.4
1984-1986 ^a	4.7	3.5	6.4	4.9	3.7	6.6	3.6	2.3	5.6
1987-1989 ^a	5.2	4.0	6.7	5.3	4.0	6.9	4.0	3.4	4.7
1990-1992 ^a	5.6	4.8	6.7	5.7	4.8	6.9	4.2	4.4	3.9
1993-1995 ^a	6.7	5.5	8.1	6.6	5.4	7.9	7.0	4.7	10.0
1996-2002 ^a	6.0 ^d	5.3 ^d	6.8 ^d	6.1 ^d	5.2 ^d	7.0 ^d	4.7 ^d	5.2 ^d	4.3
<u>5-YR PERIOD SURVIVAL RATES^{bc}</u>									
YEAR OF DIAGNOSIS:									
1996-2002	6.1	5.1	7.0	6.2	5.1	7.3	4.2	4.5	4.2
<u>STAGE DISTRIBUTION (%) 1996-2002^b</u>									
All Stages									
Number of cases	24,329	12,623	11,706	21,296	10,831	10,465	1,941	1,060	881
Percent	100%	100%	100%	100%	100%	100%	100%	100%	100%
Localized	6	6	7	6	6	7	6	6	6
Regional	34	32	36	34	32	36	37	36	38
Distant	55	58	52	55	58	52	52	53	51
Unstaged	5	5	5	5	5	5	5	4	5
<u>5-YR RELATIVE SURVIVAL RATES, 1996-2002^b</u>									
AGE AT DIAGNOSIS:									
<45	8.4	5.5	11.4	8.6	4.8	12.1	-	-	-
45-54	8.3	6.8	10.2	8.4	7.2	9.9	6.1	2.7	9.6
55-64	7.5	6.4	8.8	7.8	6.5	9.1	3.7	-	4.4
65-74	4.8	4.2	5.4	4.9	3.8	5.8	3.4	5.1	2.1
75+	2.7	2.3	3.0	2.8	2.5	3.1	1.7	2.3	1.1
Under 65	7.8	6.5	9.3	8.0	6.7	9.5	4.6	3.0	5.9
65 and over	4.1	3.5	4.5	4.1	3.3	4.8	3.0	4.4	1.9
STAGE:									
All Stages	5.7	4.9	6.5	5.8	4.9	6.7	3.7	3.8	3.6
Localized	19.8	17.8	21.5	19.2	17.2	20.5	19.5 ^e	23.7 ^e	13.1 ^e
Regional	9.5	8.8	10.1	9.9	9.0	10.7	5.7	6.5	5.3
Distant	1.8	1.5	2.2	1.8	1.5	2.3	0.4	-	0.7
Unstaged	5.9	5.0	6.6	6.3	5.3	6.8	4.8	-	7.0

^a Rates are from the SEER 9 areas (San Francisco, Connecticut, Detroit, Hawaii, Iowa, New Mexico, Seattle, Utah, Atlanta).

Rates are based on follow-up of patients into 2003.

^b Rates are from the SEER 17 areas (San Francisco, Connecticut, Detroit, Hawaii, Iowa, New Mexico, Seattle, Utah, Atlanta, San Jose-Monterey, Los Angeles, Alaska Native Registry, Rural Georgia, California excluding SF/SJM/LA, Kentucky, Louisiana and New Jersey). California excluding SF/SJM/LA, Kentucky, Louisiana, and New Jersey contribute cases for diagnosis years 2000-2002. The remaining 13 SEER Areas contribute cases for the entire period 1996-2002. Rates are based on follow-up of patients into 2003.

^c Period survival provides a more up-to-date estimate of survival by piecing together the most recent conditional survival estimates from several cohorts. It is computed here using three calendar year blocks (2000-2002: 0-1 year survival), (1999-2001: 1-2 year survival), (1998-2000: 2-3 year survival), (1997-1999: 3-4 year survival), (1996-1998: 4-5 years survival).

^d The difference in rates between 1975-1977 and 1996-2002 is statistically significant ($p < .05$).

^e The standard error of the survival rate is between 5 and 10 percentage points.

^f The standard error of the survival rate is greater than 10 percentage points.

- Statistic could not be calculated due to fewer than 16 cases during the time period.

Table XV-11
NON-SMALL CELL LUNG AND BRONCHUS CANCER (Invasive)

SURVIVAL RATES, BY RACE, SEX, DIAGNOSIS YEAR, STAGE AND AGE

	All Races			Whites			Blacks		
	Total	Males	Females	Total	Males	Females	Total	Males	Females
5-YR RELATIVE SURVIVAL RATES									
YEAR OF DIAGNOSIS:									
1975-1977 ^a	14.2	12.7	18.0	14.3	12.8	18.1	12.4	11.4	16.2
1978-1980 ^a	15.0	13.4	18.8	15.3	13.7	18.9	13.2	10.9	20.0
1981-1983 ^a	15.6	13.7	19.4	15.9	14.0	19.8	12.5	11.3	15.9
1984-1986 ^a	15.1	13.2	18.7	15.5	13.4	19.2	12.6	11.8	14.6
1987-1989 ^a	15.3	14.0	17.5	15.7	14.2	18.1	12.3	12.1	12.7
1990-1992 ^a	15.9	14.0	18.6	16.5	14.6	19.1	11.7	10.2	14.4
1993-1995 ^a	16.6	14.5	19.5	17.1	14.8	20.0	14.0	12.5	16.7
1996-2002 ^a	17.2 ^d	14.9 ^d	19.9 ^d	17.6 ^d	15.3 ^d	20.3 ^d	13.8 ^d	11.9	16.5
5-YR PERIOD SURVIVAL RATES^{bc}									
YEAR OF DIAGNOSIS:									
1996-2002	16.8	14.4	19.6	17.2	14.8	20.0	13.3	11.3	16.3
STAGE DISTRIBUTION (%) 1996-2002^b									
All Stages									
Number of cases	149,012	83,361	65,651	122,900	67,335	55,565	16,426	10,055	6,371
Percent	100%	100%	100%	100%	100%	100%	100%	100%	100%
Localized	18	16	20	18	16	20	15	13	17
Regional	38	39	37	38	38	36	39	39	39
Distant	36	38	35	36	37	34	39	41	36
Unstaged	8	8	9	9	8	9	7	7	8
5-YR RELATIVE SURVIVAL RATES, 1996-2002^b									
AGE AT DIAGNOSIS:									
<45	23.9	21.1	26.8	26.7	24.0	29.4	14.9	11.5	19.0
45-54	19.5	15.8	24.4	20.4	16.0	26.0	15.7	13.8	18.8
55-64	18.8	16.1	22.7	19.6	16.8	23.3	14.2	12.0	17.9
65-74	17.0	14.7	19.9	17.3	15.0	20.1	12.3	10.1	15.4
75+	11.5	10.4	12.4	11.7	10.6	12.7	9.5	8.1	10.6
Under 65	19.5	16.4	23.7	20.4	17.1	24.6	14.8	12.6	18.4
65 and over	14.7	13.1	16.5	15.0	13.3	16.7	11.3	9.6	13.6
STAGE:									
All Stages	16.6	14.4	19.2	17.0	14.8	19.5	13.2	11.2	16.0
Localized	51.0	46.9	54.9	51.7	47.7	55.3	43.0	39.4	47.2
Regional	16.5	15.1	18.1	16.7	15.4	18.3	14.0	12.0	16.9
Distant	2.1	1.9	2.4	2.0	1.7	2.3	2.2	2.3	2.2
Unstaged	8.1	7.9	8.4	7.9	7.5	8.2	7.8	8.0	7.6

^a Rates are from the SEER 9 areas (San Francisco, Connecticut, Detroit, Hawaii, Iowa, New Mexico, Seattle, Utah, Atlanta).

Rates are based on follow-up of patients into 2003.

^b Rates are from the SEER 17 areas (San Francisco, Connecticut, Detroit, Hawaii, Iowa, New Mexico, Seattle, Utah, Atlanta, San Jose-Monterey, Los Angeles, Alaska Native Registry, Rural Georgia, California excluding SF/SJM/LA, Kentucky, Louisiana and New Jersey). California excluding SF/SJM/LA, Kentucky, Louisiana, and New Jersey contribute cases for diagnosis years 2000-2002. The remaining 13 SEER Areas contribute cases for the entire period 1996-2002. Rates are based on follow-up of patients into 2003.

^c Period survival provides a more up-to-date estimate of survival by piecing together the most recent conditional survival estimates from several cohorts. It is computed here using three calendar year blocks (2000-2002: 0-1 year survival), (1999-2001: 1-2 year survival), (1998-2000: 2-3 year survival), (1997-1999: 3-4 year survival), (1996-1998: 4-5 years survival).

^d The difference in rates between 1975-1977 and 1996-2002 is statistically significant ($p < .05$).

^e The standard error of the survival rate is between 5 and 10 percentage points.

^f The standard error of the survival rate is greater than 10 percentage points.

- Statistic could not be calculated due to fewer than 16 cases during the time period.

Table XV-12
LUNG AND BRONCHUS CANCER (Invasive)

SURVIVAL RATES^a

By Year of Diagnosis

All Races, Males and Females

Year of Diagnosis

	1975- 1979	1980- 1984	1985	1986	1987	1988	1989	1990	1991	1992	1993	1994	1995	1996	1997	1998	1999	2000	2001	2002
Relative Survival Rates (SEER ^b)																				
1-year	36.7	38.7	39.5	40.3	39.7	40.2	40.3	40.3	41.2	41.1	40.8	41.0	41.6	41.2	41.7	41.3	42.8	42.4	41.5	41.9
2-year	21.7	22.6	22.9	23.2	22.7	23.3	23.4	23.6	24.0	24.8	24.6	24.6	25.5	25.5	25.4	25.9	26.5	26.5	26.0	
3-year	16.7	17.4	17.6	17.7	17.0	17.7	17.6	18.0	18.8	19.0	19.0	19.2	19.6	19.9	19.9	20.3	20.3	20.9		
4-year	14.4	14.9	15.1	14.8	14.7	15.2	15.2	15.3	16.0	16.2	16.3	16.4	17.1	16.9	17.2	17.5	17.5			
5-year	13.0	13.4	13.6	13.2	13.2	13.4	13.9	13.8	14.3	14.4	14.8	14.9	15.2	15.4	15.5	15.3				
6-year	12.0	12.3	12.6	12.1	12.2	12.2	13.0	12.7	13.3	13.3	13.7	13.8	13.9	14.0	14.1					
7-year	11.4	11.5	11.6	11.4	11.1	11.3	12.0	11.8	12.2	12.3	12.8	12.8	13.2	13.1						
8-year	10.7	10.7	10.8	10.6	10.5	10.6	11.2	11.1	11.4	11.4	11.9	12.1	12.5							
9-year	10.2	10.0	10.2	10.1	9.8	10.0	10.6	10.2	10.9	10.7	11.3	11.5								
11-year	9.6	9.4	9.7	9.5	9.4	9.5	10.1	9.6	10.4	10.1	10.6									
10-year	9.2	9.1	9.2	8.9	8.9	8.9	9.6	9.0	9.8	9.5										
12-year	8.8	8.6	8.9	8.5	8.5	8.3	9.2	8.5	9.3											
13-year	8.5	8.2	8.5	8.1	8.0	8.1	8.8	8.3												
14-year	8.2	7.9	8.2	7.9	7.6	7.7	8.4													
15-year	7.8	7.6	7.8	7.5	7.3	7.6														
16-year	7.6	7.2	7.4	7.3	7.2															
17-year	7.3	6.9	6.7	7.0																
18-year	7.0	6.6	6.3																	
19-year	6.8	6.3																		
20-year	6.6																			

^a Survival rates are relative rates expressed as percents.

^b Rates are from the SEER 9 areas (San Francisco, Connecticut, Detroit, Hawaii, Iowa, New Mexico, Seattle, Utah, and Atlanta).

Table XV-13
LUNG AND BRONCHUS CANCER (Invasive)

SURVIVAL RATES^a

By Year of Diagnosis

All Races, Males

Year of Diagnosis

	1975- 1979	1980- 1984	1985	1986	1987	1988	1989	1990	1991	1992	1993	1994	1995	1996	1997	1998	1999	2000	2001	2002
Relative Survival Rates (SEER ^b)																				
1-year	34.8	36.8	36.8	38.3	38.2	38.2	37.9	38.1	39.0	39.0	38.2	38.7	39.4	39.4	39.4	38.6	39.8	40.0	38.4	38.5
2-year	20.0	20.8	21.0	21.0	21.7	21.9	22.0	21.3	22.1	23.2	22.3	22.1	23.7	23.8	23.7	23.4	23.6	24.4	22.8	
3-year	15.1	15.7	15.6	16.0	15.9	16.4	16.2	16.0	17.1	17.6	16.6	16.9	17.8	18.4	18.4	18.0	17.3	18.8		
4-year	12.9	13.4	13.0	13.1	13.6	13.7	14.0	13.5	14.2	14.8	14.1	14.2	15.4	15.3	15.6	15.3	14.7			
5-year	11.5	12.0	11.7	11.6	12.3	12.1	12.8	11.9	12.6	13.2	12.8	12.9	13.7	13.8	14.2	13.1				
6-year	10.6	10.9	10.7	10.6	11.3	10.8	11.9	11.0	11.8	12.0	11.8	11.8	12.5	12.6	12.8					
7-year	10.0	10.1	9.9	9.9	10.4	9.9	11.2	10.3	10.7	11.1	11.0	10.9	12.1	11.6						
8-year	9.4	9.3	9.2	9.1	9.8	9.2	10.7	9.4	9.9	10.1	10.2	10.3	11.2							
9-year	8.9	8.7	8.7	8.7	9.3	8.6	10.1	8.6	9.4	9.4	9.7	9.9								
11-year	8.4	8.1	8.2	8.1	8.8	8.2	9.7	7.9	9.1	8.8	9.3									
10-year	8.0	7.8	7.9	7.5	8.3	7.8	9.2	7.4	8.5	8.2										
12-year	7.6	7.5	7.5	7.0	7.9	7.2	8.8	7.0	8.2											
13-year	7.2	7.1	7.1	6.7	7.3	6.9	8.4	6.8												
14-year	7.0	6.8	7.0	6.5	7.0	6.7	7.9													
15-year	6.6	6.5	6.6	6.2	6.8	6.6														
16-year	6.4	6.2	6.4	6.0	6.6															
17-year	6.2	5.8	5.8	5.5																
18-year	5.9	5.6	5.3																	
19-year	5.8	5.4																		
20-year	5.5																			

^a Survival rates are relative rates expressed as percents.

^b Rates are from the SEER 9 areas (San Francisco, Connecticut, Detroit, Hawaii, Iowa, New Mexico, Seattle, Utah, and Atlanta).

Table XV-14
LUNG AND BRONCHUS CANCER (Invasive)

SURVIVAL RATES^a

By Year of Diagnosis

All Races, Females

Year of Diagnosis

	1975- 1979	1980- 1984	1985	1986	1987	1988	1989	1990	1991	1992	1993	1994	1995	1996	1997	1998	1999	2000	2001	2002
Relative Survival Rates (SEER ^b)																				
1-year	41.9	42.7	44.7	43.9	42.2	43.6	44.2	43.8	44.6	44.1	44.6	44.1	44.6	43.6	44.5	44.8	46.4	45.2	45.3	45.9
2-year	25.9	26.2	26.7	27.1	24.6	25.8	25.8	27.1	26.9	27.0	27.9	27.8	27.9	27.7	27.5	28.9	30.0	29.2	30.0	
3-year	20.7	20.9	21.4	20.6	19.0	19.7	19.7	21.0	21.3	21.1	22.3	22.2	22.1	21.9	21.7	23.1	23.9	23.3		
4-year	18.2	18.1	18.9	17.8	16.6	17.5	17.2	18.0	18.7	18.3	19.3	19.3	19.4	19.0	19.0	20.2	20.8			
5-year	16.6	16.3	17.0	15.9	14.8	15.6	15.7	16.5	16.6	16.1	17.7	17.5	17.1	17.2	17.0	17.8				
6-year	15.4	15.0	15.9	14.7	13.6	14.4	14.5	15.2	15.3	15.0	16.3	16.3	15.7	15.8	15.6					
7-year	14.5	14.1	14.6	13.8	12.2	13.5	13.1	14.0	14.2	13.9	15.1	15.2	14.7	14.8						
8-year	13.7	13.3	13.7	12.9	11.5	12.7	11.9	13.3	13.4	13.2	14.2	14.4	14.0							
9-year	13.0	12.4	12.8	12.5	10.5	11.9	11.3	12.5	12.7	12.4	13.4	13.4								
11-year	12.3	11.7	12.2	11.5	10.3	11.3	10.6	11.8	12.0	11.8	12.3									
10-year	11.8	11.2	11.5	11.1	9.8	10.6	10.1	11.2	11.3	11.2										
12-year	11.4	10.6	11.1	10.7	9.4	9.9	9.7	10.5	10.6											
13-year	11.1	10.1	10.5	10.1	9.0	9.7	9.4	10.3												
14-year	10.5	9.7	9.9	9.8	8.4	9.1	9.0													
15-year	10.1	9.3	9.6	9.2	8.1	8.9														
16-year	9.8	8.9	8.9	9.0	7.9															
17-year	9.4	8.7	8.1	8.9																
18-year	9.0	8.2	7.7																	
19-year	8.7	7.6																		
20-year	8.4																			

^a Survival rates are relative rates expressed as percents.

^b Rates are from the SEER 9 areas (San Francisco, Connecticut, Detroit, Hawaii, Iowa, New Mexico, Seattle, Utah, and Atlanta).

Table XV-15
LUNG AND BRONCHUS CANCER (Invasive)

Percent Diagnosed With Cancer In 10, 20 and 30 Years and In Remaining Lifetime,
Given Cancer Free At Current Age By Race and Sex

Lifetime Risk (Percent) of Being Diagnosed (17 SEER Areas) With Cancer and
Lifetime Risk (Percent) of Dying (Total U.S.) From Cancer

2001-2003

Race/ Ethnicity	Current Age	Males				Females			
		+10 yrs	+20 yrs	+30 yrs	Eventually	+10 yrs	+20 yrs	+30 yrs	Eventually
All Races	0	0.00	0.00	0.01	8.02	0.00	0.00	0.01	6.15
	10	0.00	0.01	0.03	8.13	0.00	0.01	0.04	6.22
	20	0.00	0.03	0.23	8.17	0.00	0.04	0.21	6.23
	30	0.03	0.23	1.10	8.28	0.03	0.21	0.88	6.26
	40	0.21	1.09	3.41	8.39	0.18	0.85	2.57	6.28
	50	0.92	3.32	6.55	8.50	0.69	2.44	4.74	6.24
	60	2.61	6.10	7.93	8.21	1.84	4.26	5.61	5.83
White	0	0.00	0.00	0.01	8.09	0.00	0.00	0.01	6.47
	10	0.00	0.01	0.03	8.18	0.00	0.01	0.04	6.53
	20	0.00	0.03	0.22	8.23	0.01	0.04	0.21	6.55
	30	0.03	0.22	1.05	8.32	0.03	0.21	0.90	6.57
	40	0.19	1.04	3.39	8.43	0.18	0.88	2.70	6.59
	50	0.88	3.31	6.60	8.53	0.71	2.58	5.02	6.54
	60	2.63	6.18	7.99	8.26	1.95	4.51	5.90	6.11
Black	0	0.00	0.00	0.00	8.26	0.00	0.00	0.00	5.21
	10	0.00	0.00	0.04	8.49	0.00	0.00	0.04	5.32
	20	0.00	0.04	0.39	8.56	0.00	0.04	0.28	5.34
	30	0.03	0.40	1.87	8.77	0.03	0.28	1.07	5.38
	40	0.38	1.89	4.67	9.03	0.25	1.06	2.64	5.44
	50	1.62	4.59	7.66	9.26	0.84	2.49	4.32	5.41
	60	3.46	7.03	8.66	8.90	1.81	3.81	4.81	5.01
Asian/ Pacific Islander	0	0.00	0.00	0.00	7.07	0.00	0.00	0.01	4.18
	10	0.00	0.00	0.04	7.14	0.00	0.01	0.03	4.21
	20	0.00	0.04	0.17	7.16	0.00	0.03	0.12	4.22
	30	0.03	0.17	0.71	7.21	0.03	0.12	0.46	4.22
	40	0.14	0.68	2.18	7.24	0.10	0.44	1.25	4.22
	50	0.55	2.08	4.66	7.23	0.34	1.17	2.46	4.17
	60	1.60	4.30	6.48	6.99	0.85	2.18	3.50	3.93
Hispanic ^a	0	0.00	0.00	0.00	5.21	0.00	0.00	0.00	3.36
	10	0.00	0.00	0.02	5.28	0.00	0.00	0.02	3.39
	20	0.00	0.02	0.10	5.31	0.00	0.02	0.09	3.40
	30	0.01	0.09	0.46	5.37	0.01	0.09	0.36	3.41
	40	0.08	0.45	1.64	5.43	0.08	0.34	1.08	3.42
	50	0.39	1.60	3.68	5.52	0.27	1.02	2.18	3.39
	60	1.30	3.52	5.02	5.48	0.77	1.98	2.88	3.24

Race/Ethnicity	Lifetime Risk of Developing		Lifetime Risk of Dying	
	Males	Females	Males	Females
All Races	8.02%	6.15%	7.18%	4.96%
White	8.09%	6.47%	7.26%	5.16%
Black	8.26%	5.21%	7.18%	4.03%
Asian/Pacific Islander	7.07%	4.18%	5.41%	3.21%
Hispanic ^a	5.21%	3.36%	4.31%	2.20%

Devcan Version 6.1.0, April 2006, National Cancer Institute (<http://srab.cancer.gov/devcan/>).

Source: Incidence data are from the SEER 17 areas (San Francisco, Connecticut, Detroit, Hawaii, Iowa, New Mexico, Seattle, Utah, Atlanta, San Jose-Monterey, Los Angeles, Alaska Native Registry, Rural Georgia, California excluding SF/SJM/LA, Kentucky, Louisiana and New Jersey). Mortality data are from the NCHS public use data file for the total US.

^a Hispanic is not mutually exclusive from Whites, Blacks, Asian/Pacific Islanders, and American Indians/Alaska Natives. Underlying incidence data for Hispanics are based on NHIA and exclude cases from Hawaii, Seattle, Alaska Native Registry and Kentucky. Underlying mortality data for Hispanics exclude deaths from Minnesota, New Hampshire and North Dakota.

Table XV-16
LUNG AND BRONCHUS (Invasive)

SEER INCIDENCE AND U.S. MORTALITY
AGE-ADJUSTED RATES AND TRENDS^a
 By Race/Ethnicity and Sex

SEER Incidence

RACE/ETHNICITY	Rate 2000-2003 ^b			Trend 1994-2003 ^c		
	Rate per 100,000 persons			APC (%)		
	Total	Males	Females	Total	Males	Females
All Races	64.8	82.1	52.3	-1.2*	-2.0*	-0.3
White	66.0	81.7	54.7	-1.1*	-2.0*	-0.2
White Hispanic ^d	33.3	45.5	24.5	-1.8*	-2.2*	-1.4*
White Non-Hispanic ^d	67.3	81.9	56.8	-1.0*	-2.0*	-0.1
Black	76.9	112.2	53.1	-1.3*	-2.4*	0.3
Asian/Pacific Islander	39.6	55.7	27.3	-0.8*	-1.0*	-0.2
Amer Ind/Alaska Nat ^e	43.1	55.5	33.8	-3.9*	-5.2*	-1.6
Hispanic ^d	32.6	44.7	24.0	-1.9*	-2.2*	-1.5*

U.S. Mortality^f

RACE/ETHNICITY	Rate 2000-2003			Trend 1994-2003		
	Rate per 100,000 persons			APC (%)		
	Total	Males	Females	Total	Males	Females
All Races	55.1	74.2	41.2	-0.9*	-1.9*	0.4*
White	55.3	73.4	42.2	-0.7*	-1.8*	0.5*
White Hispanic ^d	24.7	37.8	15.3	-1.3*	-2.3*	0.1
White Non-Hispanic ^d	57.7	76.2	44.3	-0.6*	-1.7*	0.6*
Black	62.5	97.2	39.8	-1.6*	-2.7*	0.3
Asian/Pacific Islander	27.2	38.6	18.6	-1.3*	-1.6*	-0.7
Amer Ind/Alaska Nat	33.1	41.4	26.8	-2.0*	-3.8*	0.3
Hispanic ^d	23.9	36.6	14.7	-1.3*	-2.2*	0.1

- The APC is the Annual Percent Change over the time interval.
- Statistic not shown. Rate based on less than 16 cases for the time interval. Trend based on less than 10 cases for at least one year within the time interval.
- ^a Rates are age-adjusted to the 2000 US Std Population (19 age groups - Census P25-1130). Trends are based on rates age-adjusted to the 2000 US Std Population (19 age groups - Census P25-1130).
- ^b Incidence data used in calculating the rates are from the 17 SEER areas (San Francisco, Connecticut, Detroit, Hawaii, Iowa, New Mexico, Seattle, Utah, Atlanta, San Jose-Monterey, Los Angeles, Alaska Native Registry, Rural Georgia, California excluding SF/SJM/LA, Kentucky, Louisiana and New Jersey).
- ^c Incidence data used in calculating the trends are from the 13 SEER areas (San Francisco, Connecticut, Detroit, Hawaii, Iowa, New Mexico, Seattle, Utah, Atlanta, San Jose-Monterey, Los Angeles, Alaska Native Registry and Rural Georgia).
- ^d Hispanic and Non-Hispanic are not mutually exclusive from Whites, Blacks, Asian/Pacific Islanders, and American Indians/Alaska Natives. Incidence data for Hispanics and Non-Hispanics are based on NHIA and exclude cases from Hawaii, Seattle, Alaska Native Registry and Kentucky. The 2000-2003 Hispanic and Non-Hispanic death rates exclude deaths from Minnesota, New Hampshire and North Dakota. The 1994-2003 Hispanic and Non-Hispanic mortality trends exclude deaths from Maine, Minnesota, New Hampshire, North Dakota, and Oklahoma.
- ^e Incidence data for American Indians/Alaska Natives include cases from Connecticut, Detroit, Iowa, New Mexico, Seattle, Utah, Atlanta, and the Alaska Native Registry. Incidence rates are for diagnosis years 1999-2002. Incidence trends are for diagnosis years 1994-2002.
- ^f Mortality data are analyzed from a public use file provided by the National Center for Health Statistics (NCHS).
- * The APC is significantly different from zero (p<.05).

Table XV-17
LUNG AND BRONCHUS CANCER (Invasive)

AGE-ADJUSTED SEER INCIDENCE RATES^a
By Registry, Race/Ethnicity and Sex

	All Races		Whites		Blacks		Asian/Pacific Islanders		Hispanics ^b		
	Total	Males	Females	Males	Females	Males	Females	Males	Females	Males	Females
<u>SEER INCIDENCE RATES^a, 2000-2003</u>											
REGISTRY											
17 SEER Areas ^c	64.8	82.1	52.3	81.7	54.7	112.2	53.1	55.7	27.3	44.7	24.0
13 SEER Areas ^c	59.7	75.3	48.4	74.4	50.7	109.2	53.9	57.6	27.9	43.3	22.0
11 SEER Areas ^c	59.6	75.1	48.3	74.3	50.7	108.9	54.3	57.6	27.9	43.3	22.0
9 SEER Areas ^c	63.4	80.1	51.4	79.2	53.5	113.2	56.8	59.7	28.9	49.7	26.3
San Francisco-Oakland	57.0	69.1	48.4	66.0	52.0	106.9	63.3	61.6	29.5	48.7	25.3
Connecticut	68.2	83.6	57.6	83.6	58.6	89.1	51.0	37.7	20.6	65.9	38.6
Metropolitan Detroit	80.7	103.7	64.9	98.9	66.1	128.3	64.1	45.9	23.1	61.5	48.8
Hawaii	49.9	66.7	36.5	74.4	51.9	-	-	63.2	31.6	-	-
Iowa	66.9	89.6	50.7	89.0	50.6	135.2	62.1	-	-	-	-
New Mexico	46.6	59.6	36.7	61.6	39.1	91.5	31.6	-	-	46.9	22.7
Seattle-Puget Sound	70.6	84.0	61.0	84.2	63.8	117.5	56.1	65.6	28.2	-	-
Utah	29.7	40.7	20.9	41.0	20.9	-	-	27.7	23.7	46.9	26.4
Metropolitan Atlanta	65.8	89.3	50.2	85.4	52.7	106.9	46.5	40.1	20.7	40.9	19.4
San Jose-Monterey	49.0	58.6	42.3	60.2	46.4	76.7	43.8	49.5	25.5	44.9	23.4
Los Angeles	50.2	63.5	40.4	60.7	42.2	99.6	48.2	55.9	27.0	38.4	19.0
Rural Georgia	75.5	115.0	45.3	105.2	54.1	135.8	28.8	-	-	-	-
California exclud. SF/SJM/LA	61.6	74.3	52.2	75.3	54.4	97.9	51.1	52.7	27.0	43.8	26.7
Kentucky	100.5	137.6	74.0	137.4	73.9	148.6	79.5	75.0	-	-	-
Louisiana	79.9	112.0	57.0	107.2	60.0	129.6	48.7	48.3	47.0	59.7	27.4
New Jersey	67.2	84.0	55.6	83.3	57.7	102.7	50.9	43.4	18.8	54.8	25.3

^a Rates are per 100,000 and are age-adjusted to the 2000 US Std Population (19 age groups - Census P25-1130)

^b Hispanic is not mutually exclusive from Whites, Blacks, Asian/Pacific Islanders, and American Indians/Alaska Natives.

Incidence data for Hispanics are based on NHIA and exclude cases from Hawaii, Seattle, Alaska Native Registry and Kentucky.

^c The SEER 9 areas are San Francisco, Connecticut, Detroit, Hawaii, Iowa, New Mexico, Seattle, Utah and Atlanta.

The SEER 11 areas comprise the SEER 9 areas plus San Jose-Monterey and Los Angeles.

The SEER 13 areas comprise the SEER 11 areas plus the Alaska Native Registry and Rural Georgia.

The SEER 17 areas comprise the SEER 13 areas plus California excluding SF/SJM/LA, Kentucky, Louisiana and New Jersey

- Statistic not shown. Rate based on less than 16 cases for the time interval.

Table XV-18
LUNG AND BRONCHUS CANCER (Invasive)

AGE-ADJUSTED SEER DEATH RATES^a
By Registry, Race/Ethnicity and Sex

	All Races		Whites		Blacks		Asian/Pacific Islanders		Hispanics ^b		
	Total	Males	Females	Males	Females	Males	Females	Males	Females	Males	Females
<u>SEER DEATH RATES^a, 2000-2003</u>											
REGISTRY											
17 SEER Areas ^c	51.0	66.9	39.6	66.8	41.3	95.2	42.7	41.9	19.4	33.2	14.9
13 SEER Areas ^c	46.2	60.2	36.2	59.8	37.9	88.5	42.8	43.4	19.5	34.2	14.8
11 SEER Areas ^c	46.0	59.9	36.1	59.7	37.8	87.9	43.1	43.4	19.6	34.2	14.8
9 SEER Areas ^c	48.5	63.3	38.0	63.1	39.6	89.3	43.8	44.4	19.3	38.9	17.3
San Francisco-Oakland	45.3	56.7	37.2	55.6	40.9	93.4	50.1	46.9	20.1	31.4	17.4
Connecticut	49.4	62.7	40.4	62.6	41.0	72.3	37.2	-	-	35.6	12.6
Metropolitan Detroit	58.8	76.9	46.6	73.9	46.7	93.0	48.6	29.5	14.4	45.3	16.4
Hawaii	35.1	49.2	23.8	55.9	34.2	-	-	46.9	20.7	91.2	35.2
Iowa	51.9	73.0	36.9	72.7	36.9	117.2	57.8	-	-	-	-
New Mexico	38.9	51.5	29.5	53.0	31.4	90.2	-	-	-	42.3	18.3
Seattle-Puget Sound	55.2	67.5	46.3	68.1	48.5	99.6	46.2	48.7	20.1	31.1	17.2
Utah	24.8	34.9	16.7	35.1	16.6	-	-	30.6	-	30.9	19.6
Metropolitan Atlanta	52.0	72.7	38.7	69.2	40.5	88.5	35.6	30.7	-	27.6	-
San Jose-Monterey	37.6	45.6	32.1	46.9	34.9	85.1	35.6	35.7	20.7	31.2	13.4
Los Angeles	40.4	52.7	31.4	50.8	32.4	84.7	41.7	43.7	19.9	31.0	13.2
Rural Georgia	63.9	102.2	36.1	90.2	42.4	130.6	24.8	-	-	-	-
California exclud. SF/SJM/LA	49.5	61.4	40.8	62.5	42.6	82.1	41.1	41.0	20.7	31.3	15.2
Kentucky	80.0	115.1	55.2	114.9	55.1	129.0	60.3	-	-	63.2	53.5
Louisiana	67.3	97.5	45.9	91.1	47.5	120.2	41.7	58.2	-	34.2	14.6
New Jersey	51.8	67.9	40.9	67.3	42.1	89.6	40.2	27.4	13.0	32.9	13.0
Total U.S.	55.1	74.2	41.2	73.4	42.2	97.2	39.8	38.6	18.6	36.6	14.7

^a NCHS public use data file for the total US. Rates are per 100,000 and are age-adjusted to the 2000 US Std Population (19 age groups - Census P25-1130).

^b Hispanic is not mutually exclusive from Whites, Blacks, Asian/Pacific Islanders, and American Indians/Alaska Natives. The 2000-2003 Hispanic death rates do not include deaths from Minnesota, New Hampshire and North Dakota.

^c The SEER 9 areas are San Francisco, Connecticut, Detroit, Hawaii, Iowa, New Mexico, Seattle, Utah and Atlanta.

The SEER 11 areas comprise the SEER 9 areas plus San Jose-Monterey and Los Angeles.

The SEER 13 areas comprise the SEER 11 areas plus the Alaska Native Registry and Rural Georgia.

The SEER 17 areas comprise the SEER 13 areas plus California excluding SF/SJM/LA, Kentucky, Louisiana and New Jersey

- Statistic not shown. Rate based on less than 16 cases for the time interval.

Table XV-19
LUNG AND BRONCHUS CANCER (Invasive)

AVERAGE ANNUAL AGE-ADJUSTED CANCER DEATH^a RATES BY STATE, ALL RACES, 2000-2003

Males and Females

State	Rate	SE	Rank	PD	State	Rate	SE	Rank	PD
TOTAL U.S.	55.1	0.07							
High Five States									
Kentucky	80.0 ^{bc}	0.70	(01)	45.2					
West Virginia	70.4 ^{bc}	0.90	(02)	27.8					
Arkansas	68.9 ^{bc}	0.77	(03)	25.0					
Tennessee	68.7 ^{bc}	0.54	(04)	24.7					
Mississippi	68.5 ^{bc}	0.79	(05)	24.3					
Low Five States									
North Dakota	44.8 ^{bc}	1.26	(47)	-18.7					
Colorado	41.9 ^{bc}	0.54	(48)	-24.0					
New Mexico	38.9 ^{bc}	0.75	(49)	-29.4					
Hawaii	35.1 ^{bc}	0.82	(50)	-36.3					
Utah	24.8 ^{bc}	0.62	(51)	-55.0					
Alabama	63.8 ^{bc}	0.58	(09)	15.8	Montana	53.9	1.17	(32)	-2.2
Alaska	55.4	2.09	(27)	0.5	Nebraska	49.4 ^{bc}	0.83	(37)	-10.3
Arizona	47.5 ^{bc}	0.47	(43)	-13.8	Nevada	62.5 ^{bc}	0.91	(11)	13.4
Arkansas	68.9 ^{bc}	0.77	(03)	25.0	New Hampshire	53.8	1.04	(33)	-2.4
California	45.8 ^{bc}	0.20	(45)	-16.9	New Jersey	51.8 ^{bc}	0.38	(35)	-6.0
Colorado	41.9 ^{bc}	0.54	(48)	-24.0	New Mexico	38.9 ^{bc}	0.75	(49)	-29.4
Connecticut	49.4 ^{bc}	0.58	(38)	-10.3	New York	48.2 ^{bc}	0.25	(41)	-12.5
Delaware	60.3 ^{bc}	1.35	(17)	9.4	North Carolina	60.4 ^{bc}	0.43	(16)	9.6
District of Columbia	55.9	1.59	(24)	1.5	North Dakota	44.8 ^{bc}	1.26	(47)	-18.7
Florida	55.5	0.26	(26)	0.7	Ohio	61.0 ^{bc}	0.36	(15)	10.7
Georgia	61.0 ^{bc}	0.47	(14)	10.7	Oklahoma	64.2 ^{bc}	0.66	(08)	16.5
Hawaii	35.1 ^{bc}	0.82	(50)	-36.3	Oregon	56.5	0.63	(22)	2.5
Idaho	44.8 ^{bc}	0.96	(46)	-18.7	Pennsylvania	54.4	0.30	(30)	-1.3
Illinois	56.5 ^c	0.34	(23)	2.5	Rhode Island	56.6	1.10	(21)	2.7
Indiana	65.3 ^{bc}	0.52	(07)	18.5	South Carolina	61.6 ^{bc}	0.62	(13)	11.8
Iowa	51.9 ^{bc}	0.63	(34)	-5.8	South Dakota	48.0 ^{bc}	1.20	(42)	-12.9
Kansas	54.0	0.70	(31)	-2.0	Tennessee	68.7 ^{bc}	0.54	(04)	24.7
Kentucky	80.0 ^{bc}	0.70	(01)	45.2	Texas	54.8	0.28	(29)	-0.5
Louisiana	67.3 ^{bc}	0.63	(06)	22.1	Utah	24.8 ^{bc}	0.62	(51)	-55.0
Maine	61.6 ^{bc}	1.02	(12)	11.8	Vermont	51.0 ^b	1.41	(36)	-7.4
Maryland	57.9 ^{bc}	0.53	(18)	5.1	Virginia	57.6 ^c	0.46	(19)	4.5
Massachusetts	55.0	0.45	(28)	-0.2	Washington	55.7	0.50	(25)	1.1
Michigan	56.8 ^c	0.38	(20)	3.1	West Virginia	70.4 ^{bc}	0.90	(02)	27.8
Minnesota	46.9 ^{bc}	0.49	(44)	-14.9	Wisconsin	48.6 ^{bc}	0.47	(40)	-11.8
Mississippi	68.5 ^{bc}	0.79	(05)	24.3	Wyoming	49.1 ^{bc}	1.60	(39)	-10.9
Missouri	62.8 ^{bc}	0.51	(10)	14.0					

^a NCHS public use data file. Rates are per 100,000 and are age-adjusted to the 2000 US Std Population (19 age groups - Census P25-1130).

^b Absolute percent difference between state rate and total U.S. rate is 5% or more.

^c Difference between state rate and total U.S. rate is statistically significant (p<=.0002).

SE Standard error of the rate.

PD Percent difference between state rate and total U.S. rate.

Table XV-20
LUNG AND BRONCHUS CANCER (Invasive)

AVERAGE ANNUAL AGE-ADJUSTED CANCER DEATH^a RATES BY STATE, ALL RACES, 2000-2003

Males

State	Rate	SE	Rank	PD	State	Rate	SE	Rank	PD
TOTAL U.S.	74.2	0.12							
High Five States									
Kentucky	115.1 ^{bc}	1.31	(01)	55.1					
Mississippi	105.6 ^{bc}	1.54	(02)	42.3					
Tennessee	101.6 ^{bc}	1.04	(03)	36.9					
Arkansas	100.6 ^{bc}	1.43	(04)	35.6					
Louisiana	97.5 ^{bc}	1.20	(05)	31.4					
Low Five States									
Idaho	57.5 ^{bc}	1.64	(47)	-22.5					
Colorado	53.2 ^{bc}	0.95	(48)	-28.3					
New Mexico	51.5 ^{bc}	1.31	(49)	-30.6					
Hawaii	49.2 ^{bc}	1.45	(50)	-33.7					
Utah	34.9 ^{bc}	1.12	(51)	-53.0					
Alabama	97.4 ^{bc}	1.14	(06)	31.3	Montana	67.8 ^d	1.98	(34)	-8.6
Alaska	70.8	3.69	(29)	-4.6	Nebraska	67.3 ^{bc}	1.47	(36)	-9.3
Arizona	59.8 ^{bc}	0.79	(45)	-19.4	Nevada	73.8	1.50	(26)	-0.5
Arkansas	100.6 ^{bc}	1.43	(04)	35.6	New Hampshire	67.0 ^{bc}	1.79	(37)	-9.7
California	57.5 ^{bc}	0.34	(46)	-22.5	New Jersey	67.9 ^{bc}	0.68	(33)	-8.5
Colorado	53.2 ^{bc}	0.95	(48)	-28.3	New Mexico	51.5 ^{bc}	1.31	(49)	-30.6
Connecticut	62.7 ^{bc}	1.00	(42)	-15.5	New York	63.5 ^{bc}	0.44	(41)	-14.4
Delaware	78.4 ^b	2.37	(18)	5.7	North Carolina	88.4 ^{bc}	0.83	(12)	19.1
District of Columbia	79.7 ^b	3.01	(16)	7.4	North Dakota	61.6 ^{bc}	2.21	(43)	-17.0
Florida	72.3 ^c	0.44	(28)	-2.6	Ohio	84.2 ^{bc}	0.65	(14)	13.5
Georgia	89.8 ^{bc}	0.92	(10)	21.0	Oklahoma	89.1 ^{bc}	1.21	(11)	20.1
Hawaii	49.2 ^{bc}	1.45	(50)	-33.7	Oregon	68.3 ^{bc}	1.05	(31)	-8.0
Idaho	57.5 ^{bc}	1.64	(47)	-22.5	Pennsylvania	74.7	0.55	(24)	0.7
Illinois	77.2 ^c	0.62	(19)	4.0	Rhode Island	75.7	1.97	(22)	2.0
Indiana	90.2 ^{bc}	0.95	(09)	21.6	South Carolina	91.8 ^{bc}	1.18	(08)	23.7
Iowa	73.0	1.13	(27)	-1.6	South Dakota	67.6 ^b	2.15	(35)	-8.9
Kansas	73.8	1.25	(25)	-0.5	Tennessee	101.6 ^{bc}	1.04	(03)	36.9
Kentucky	115.1 ^{bc}	1.31	(01)	55.1	Texas	76.1	0.52	(20)	2.6
Louisiana	97.5 ^{bc}	1.20	(05)	31.4	Utah	34.9 ^{bc}	1.12	(51)	-53.0
Maine	80.1 ^b	1.79	(15)	8.0	Vermont	66.6 ^b	2.47	(38)	-10.2
Maryland	75.9	0.96	(21)	2.3	Virginia	78.5 ^{bc}	0.85	(17)	5.8
Massachusetts	69.6 ^{bc}	0.79	(30)	-6.2	Washington	68.2 ^{bc}	0.85	(32)	-8.1
Michigan	75.1	0.67	(23)	1.2	West Virginia	96.1 ^{bc}	1.63	(07)	29.5
Minnesota	60.1 ^{bc}	0.85	(44)	-19.0	Wisconsin	65.0 ^{bc}	0.83	(39)	-12.4
Mississippi	105.6 ^{bc}	1.54	(02)	42.3	Wyoming	63.8 ^{bc}	2.79	(40)	-14.0
Missouri	86.8 ^{bc}	0.93	(13)	17.0					

^a NCHS public use data file. Rates are per 100,000 and are age-adjusted to the 2000 US Std Population (19 age groups - Census P25-1130).

^b Absolute percent difference between state rate and total U.S. rate is 5% or more.

^c Difference between state rate and total U.S. rate is statistically significant ($p \leq .0002$).

SE Standard error of the rate.

PD Percent difference between state rate and total U.S. rate.

Table XV-21
LUNG AND BRONCHUS CANCER (Invasive)

AVERAGE ANNUAL AGE-ADJUSTED CANCER DEATH^a RATES BY STATE, ALL RACES, 2000-2003

Females

State	Rate	SE	Rank	PD	State	Rate	SE	Rank	PD
TOTAL U.S.	41.2	0.08							
High Five States									
Kentucky	55.2 ^{bc}	0.77	(01)	34.0					
Nevada	53.4 ^{bc}	1.14	(02)	29.6					
West Virginia	51.7 ^{bc}	1.03	(03)	25.5					
Maine	48.4 ^{bc}	1.21	(04)	17.5					
Oregon	48.0 ^{bc}	0.78	(05)	16.5					
Low Five States									
South Dakota	33.4 ^{bc}	1.37	(47)	-18.9					
North Dakota	32.0 ^{bc}	1.45	(48)	-22.3					
New Mexico	29.5 ^{bc}	0.87	(49)	-28.4					
Hawaii	23.8 ^{bc}	0.91	(50)	-42.2					
Utah	16.7 ^{bc}	0.69	(51)	-59.5					
Alabama	40.5	0.62	(29)	-1.7	Montana	43.4 ^d	1.43	(21)	5.3
Alaska	43.5 ^b	2.48	(19)	5.6	Nebraska	36.1 ^{bc}	0.95	(44)	-12.4
Arizona	37.9 ^{bc}	0.57	(38)	-8.0	Nevada	53.4 ^{bc}	1.14	(02)	29.6
Arkansas	45.8 ^{bc}	0.83	(11)	11.2	New Hampshire	44.5 ^b	1.27	(17)	8.0
California	37.3 ^{bc}	0.23	(41)	-9.5	New Jersey	40.9	0.45	(27)	-0.7
Colorado	33.8 ^{bc}	0.65	(46)	-18.0	New Mexico	29.5 ^{bc}	0.87	(49)	-28.4
Connecticut	40.4	0.69	(30)	-1.9	New York	37.9 ^{bc}	0.29	(39)	-8.0
Delaware	46.8 ^{bc}	1.58	(07)	13.6	North Carolina	40.9	0.47	(28)	-0.7
District of Columbia	39.4	1.74	(35)	-4.4	North Dakota	32.0 ^{bc}	1.45	(48)	-22.3
Florida	42.3 ^c	0.30	(24)	2.7	Ohio	44.6 ^{bc}	0.41	(16)	8.3
Georgia	41.2	0.51	(26)	0.0	Oklahoma	46.4 ^{bc}	0.76	(09)	12.6
Hawaii	23.8 ^{bc}	0.91	(50)	-42.2	Oregon	48.0 ^{bc}	0.78	(05)	16.5
Idaho	35.2 ^{bc}	1.16	(45)	-14.6	Pennsylvania	40.3	0.35	(31)	-2.2
Illinois	42.1	0.39	(25)	2.2	Rhode Island	43.5 ^b	1.29	(20)	5.6
Indiana	47.9 ^{bc}	0.59	(06)	16.3	South Carolina	40.0	0.66	(32)	-2.9
Iowa	36.9 ^{bc}	0.71	(43)	-10.4	South Dakota	33.4 ^{bc}	1.37	(47)	-18.9
Kansas	39.7	0.81	(33)	-3.6	Tennessee	45.5 ^{bc}	0.59	(13)	10.4
Kentucky	55.2 ^{bc}	0.77	(01)	34.0	Texas	39.2 ^c	0.32	(36)	-4.9
Louisiana	45.9 ^{bc}	0.69	(10)	11.4	Utah	16.7 ^{bc}	0.69	(51)	-59.5
Maine	48.4 ^{bc}	1.21	(04)	17.5	Vermont	39.7	1.68	(34)	-3.6
Maryland	45.0 ^{bc}	0.62	(14)	9.2	Virginia	42.8	0.53	(22)	3.9
Massachusetts	45.0 ^{bc}	0.54	(15)	9.2	Washington	46.7 ^{bc}	0.62	(08)	13.3
Michigan	44.0 ^{bc}	0.45	(18)	6.8	West Virginia	51.7 ^{bc}	1.03	(03)	25.5
Minnesota	37.4 ^{bc}	0.59	(40)	-9.2	Wisconsin	37.2 ^{bc}	0.55	(42)	-9.7
Mississippi	42.5	0.82	(23)	3.2	Wyoming	38.2 ^b	1.91	(37)	-7.3
Missouri	45.8 ^{bc}	0.58	(12)	11.2					

^a NCHS public use data file. Rates are per 100,000 and are age-adjusted to the 2000 US Std Population (19 age groups - Census P25-1130).

^b Absolute percent difference between state rate and total U.S. rate is 5% or more.

^c Difference between state rate and total U.S. rate is statistically significant (p<=.0002).

SE Standard error of the rate.

PD Percent difference between state rate and total U.S. rate.

Table XV-22
LUNG AND BRONCHUS CANCER (Invasive)

Estimated United States Cancer Prevalence Counts^a on January 1, 2003
By Race/Ethnicity, Sex and Years Since Diagnosis

Years Since Diagnosis	0 to <5	5 to <10	10 to <15	15 to <20	20 to <25	0 to <13 ^e	0 to <28 ^e	>=28 ^g	Complete ^h
Race/Sex									
All Races ^b	204,290	67,858	35,894	19,317	9,930	296,216	340,934	14,055	354,989
Males	99,565	32,212	17,329	9,309	5,053	143,137	165,339	8,092	173,431
Females	104,725	35,646	18,565	10,008	4,877	153,079	175,595	5,963	181,558
White ^b	176,378	59,458	32,082	17,097	8,800	257,369	297,029	7,069	304,098
Males	85,040	27,731	15,357	8,040	4,455	122,849	142,233	3,533	145,766
Females	91,338	31,727	16,725	9,057	4,345	134,520	154,796	3,536	158,332
Black ^b	21,525	6,543	2,972	1,806	878	30,036	34,061	710	34,771
Males	11,024	3,393	1,510	996	478	15,396	17,628	388	18,016
Females	10,501	3,150	1,462	810	400	14,640	16,433	322	16,755
Asian/Pacific Islander ^c	4,533	1,224	+	+	+	6,166	+	+	+
Males	2,519	712	+	+	+	3,468	+	+	+
Females	2,014	512	+	+	+	2,698	+	+	+
Hispanic ^d	5,392	1,470	+	+	+	7,525	+	+	+
Males	2,886	733	+	+	+	3,906	+	+	+
Females	2,506	737	+	+	+	3,619	+	+	+

Estimated prevalence percent^a on January 1, 2003, of the SEER 11 population diagnosed in the previous 10 years
By Age at Prevalence, Race/Ethnicity and Sex

Age at Prevalence	Age Specific (Crude)										Age-Adjusted ^f
	All Ages	0-9	10-19	20-29	30-39	40-49	50-59	60-69	70-79	80+	All Ages
Race/Sex											
All Races ^c	0.0789%	-	0.0002%	0.0012%	0.0042%	0.0240%	0.1092%	0.3342%	0.5510%	0.3785%	0.0863%
Males	0.0781%	-	0.0003%	0.0010%	0.0038%	0.0228%	0.1110%	0.3612%	0.6360%	0.4728%	0.0962%
Females	0.0797%	-	-	0.0014%	0.0046%	0.0252%	0.1076%	0.3102%	0.4870%	0.3273%	0.0792%
White ^c	0.0849%	-	0.0002%	0.0013%	0.0043%	0.0232%	0.1086%	0.3461%	0.5732%	0.3808%	0.0884%
Males	0.0813%	-	0.0003%	0.0010%	0.0039%	0.0211%	0.1055%	0.3602%	0.6439%	0.4637%	0.0954%
Females	0.0885%	-	-	0.0017%	0.0047%	0.0254%	0.1116%	0.3332%	0.5190%	0.3364%	0.0836%
Black ^c	0.0686%	-	-	0.0009%	0.0044%	0.0378%	0.1619%	0.4028%	0.5462%	0.3367%	0.0980%
Males	0.0758%	-	-	-	0.0039%	0.0423%	0.1996%	0.5019%	0.6733%	0.4973%	0.1227%
Females	0.0621%	-	-	-	0.0049%	0.0339%	0.1307%	0.3251%	0.4626%	0.2603%	0.0808%
Asian/Pacific Islander ^c	0.0543%	-	-	-	0.0036%	0.0172%	0.0724%	0.2115%	0.3991%	0.3733%	0.0627%
Males	0.0631%	-	-	-	0.0028%	0.0183%	0.0804%	0.2692%	0.5562%	0.5155%	0.0820%
Females	0.0461%	-	-	-	0.0043%	0.0162%	0.0654%	0.1633%	0.2853%	0.2774%	0.0484%
Hispanic ^d	0.0173%	-	-	0.0009%	0.0020%	0.0111%	0.0372%	0.1323%	0.2484%	0.1980%	0.0374%
Males	0.0175%	-	-	0.0009%	0.0018%	0.0099%	0.0421%	0.1459%	0.3292%	0.2681%	0.0459%
Females	0.0171%	-	-	0.0009%	0.0022%	0.0123%	0.0327%	0.1212%	0.1908%	0.1586%	0.0316%

^a US 2003 cancer prevalence counts are based on 2003 cancer prevalence proportions from the SEER registries and 1/1/2003 US population estimates based on the average of 2002 and 2003 population estimates from the US Bureau of the Census. Prevalence was calculated using the First Malignant Primary Only for a person.

^{b c d} Statistics based on (b) SEER 9 Areas (c) SEER 11 Areas and Rural Georgia (d) NHIA for Hispanic for SEER 11 Areas and Rural Georgia excluding Hawaii and Seattle.

^e Maximum limited-duration prevalence: 28 years for 1975-2003 SEER 9 data; 13 years for 1990-2003 SEER 11 data (used to calculate prevalence for Hispanics and Asian Pacific Islanders).

^f Percentages are age-adjusted to the 2000 US standard population by 5-year age groups.

^{g h} (g) Cases diagnosed more than 28 years ago were estimated using the completeness index method (Capocaccia et. al. 1997, Merrill et. al. 2000). (h) Complete prevalence is obtained by summing 0 to <28 and >=28.

- Statistic not shown. Statistic based on fewer than 5 cases estimated alive in SEER for the time interval.

+ Not available.

SEER Incidence, Delay Adjusted Incidence and US Death Rates+ Lung and Bronchus Cancer, by Race and Sex

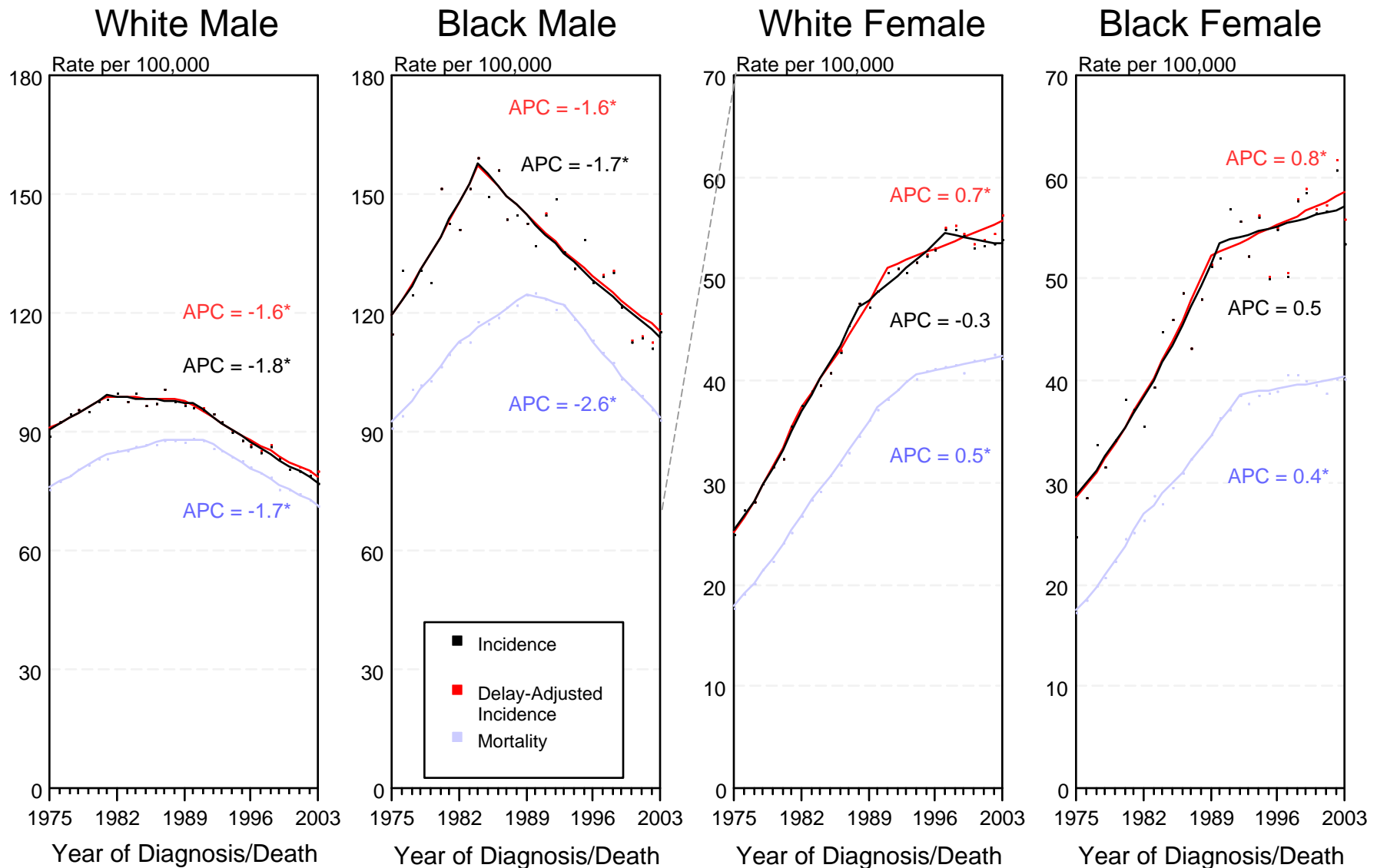


Figure XV-1

+ Source: SEER 9 areas and NCHS public use data file for the total US. Rates are age-adjusted to the 2000 US Std Population (19 age groups - Census P25-1103). Regression lines and APCs are calculated using the Joinpoint Regression Program Version 3.1, April 2006, National Cancer Institute.

The APC is the Annual Percent Change for the regression line segments. The APC shown on the graph is for the most recent trend.

* The APC is significantly different from zero ($p < 0.05$).

SEER Incidence, Delay Adjusted Incidence and US Death Rates+ Lung and Bronchus Cancer, Under 65 Years of Age, by Race and Sex

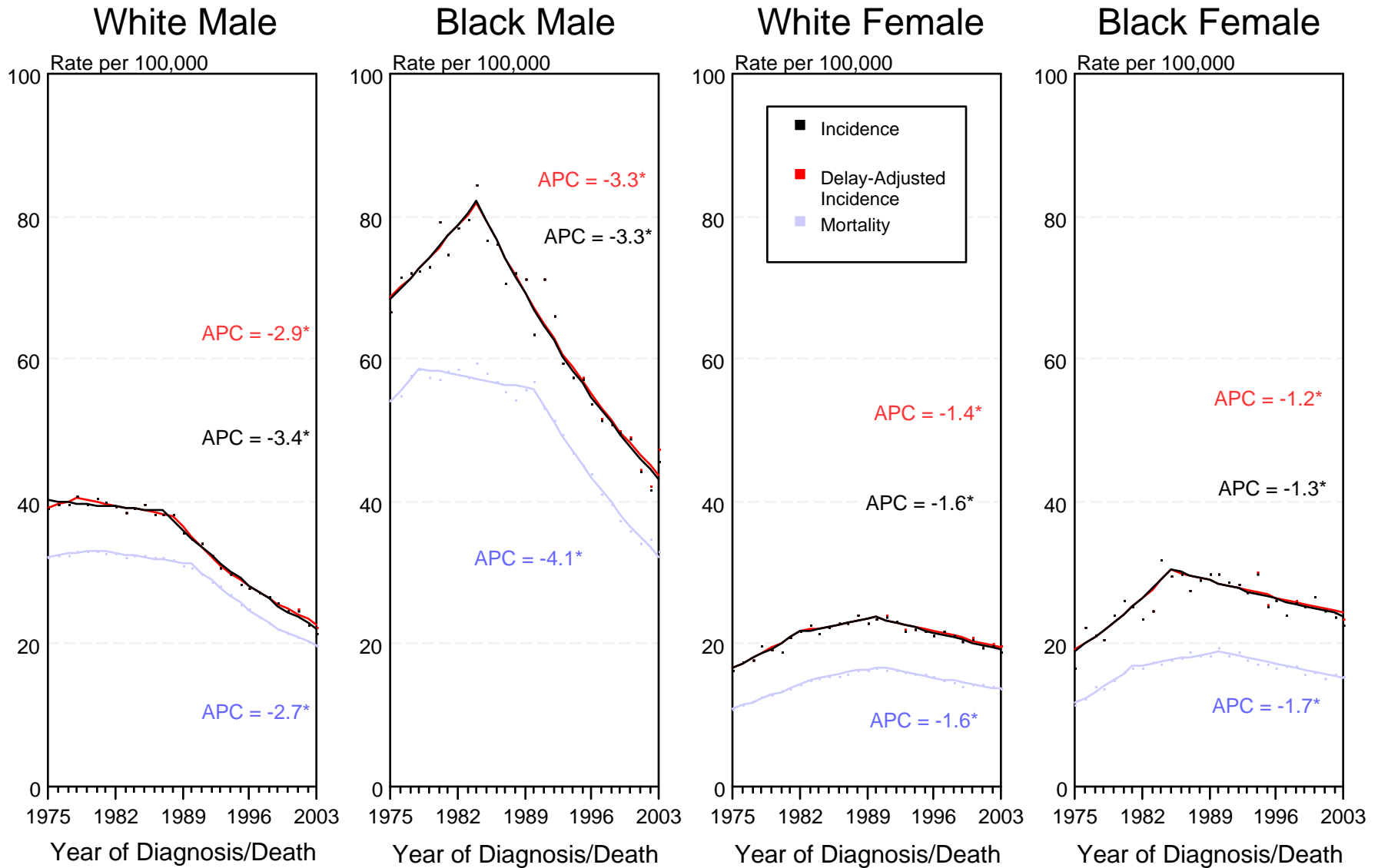


Figure XV-2

+ Source: SEER 9 areas and NCHS public use data file for the total US. Rates are age-adjusted to the 2000 US Std Population (19 age groups - Census P25-1103). Regression lines and APCs are calculated using the Joinpoint Regression Program Version 3.1, April 2006, National Cancer Institute.

The APC is the Annual Percent Change for the regression line segments. The APC shown on the graph is for the most recent trend.

* The APC is significantly different from zero ($p < 0.05$).

SEER Incidence, Delay Adjusted Incidence and US Death Rates+ Lung and Bronchus Cancer, Ages 65 and Over, by Race and Sex

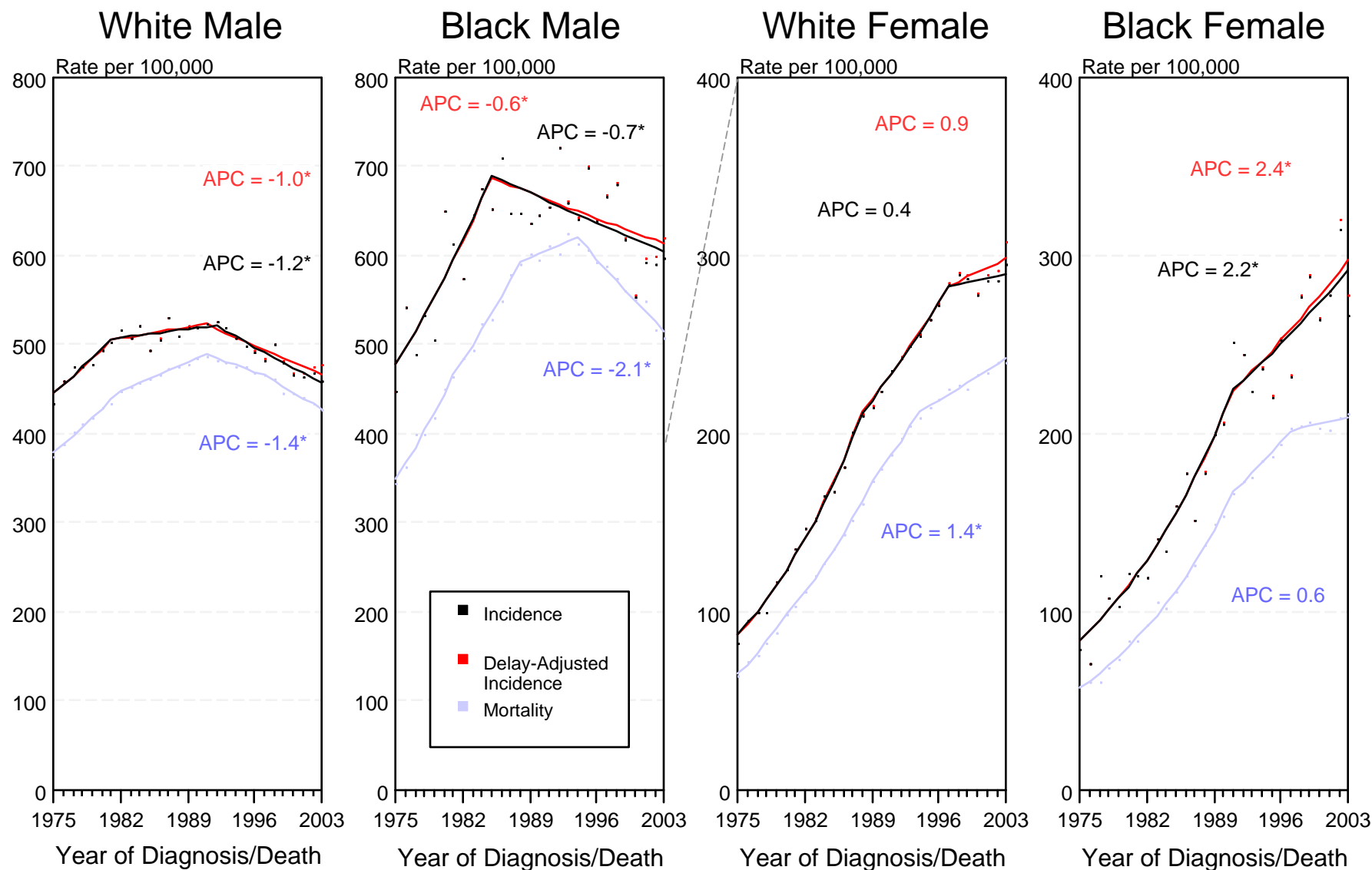


Figure XV-3

+ Source: SEER 9 areas and NCHS public use data file for the total US. Rates are age-adjusted to the 2000 US Std Population (19 age groups - Census P25-1103). Regression lines and APCs are calculated using the Joinpoint Regression Program Version 3.1, April 2006, National Cancer Institute.

The APC is the Annual Percent Change for the regression line segments. The APC shown on the graph is for the most recent trend.

* The APC is significantly different from zero ($p < 0.05$).

SEER Incidence and US Death Rates* Lung and Bronchus Cancer, Both Sexes

Joinpoint Analyses for Whites and Blacks from 1975-2003 and for Asian/Pacific Islanders, American Indians/Alaska Natives and Hispanics from 1992-2003

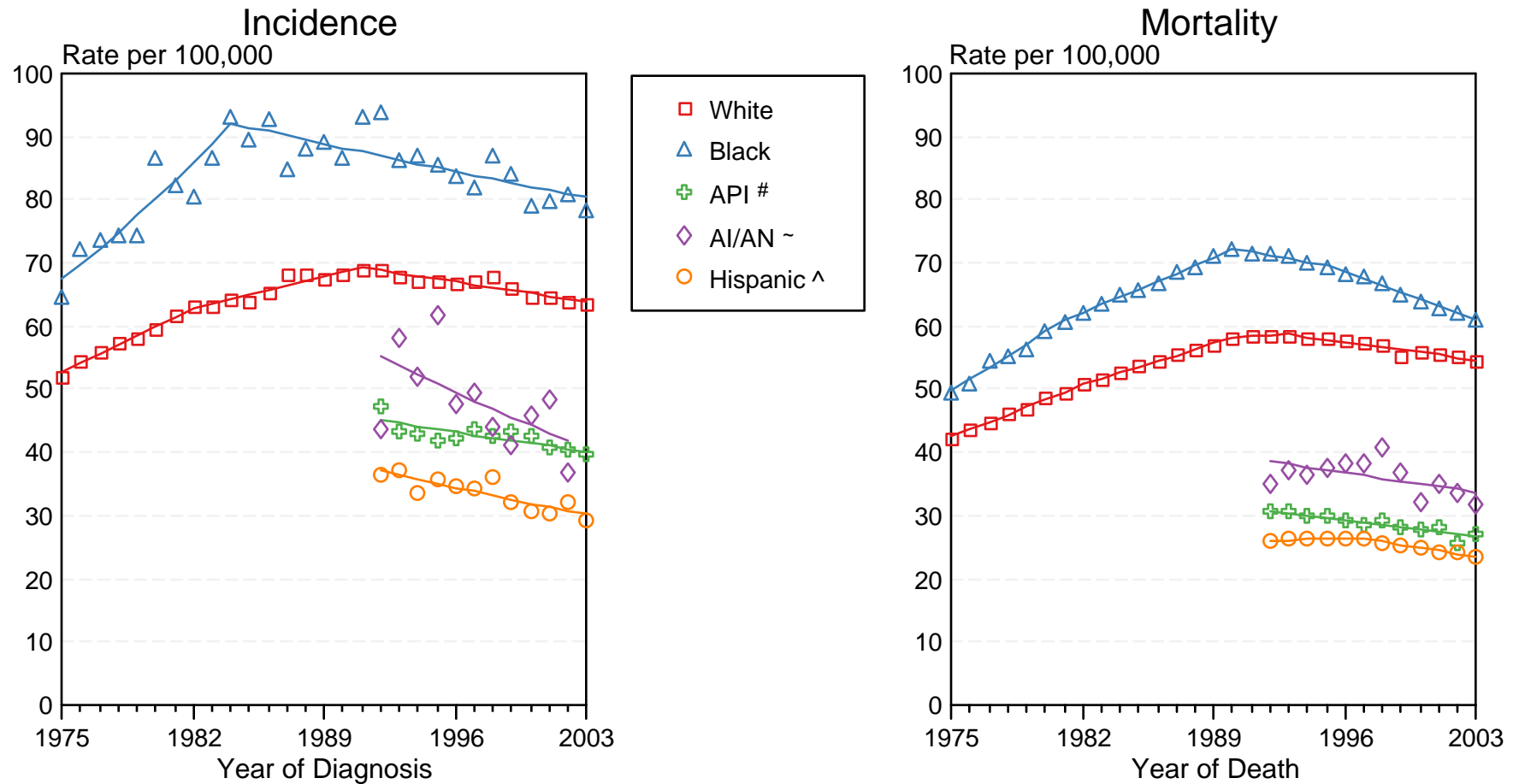


Figure XV-4

Source: Incidence data for Whites and Blacks are from the SEER 9 areas (San Francisco, Connecticut, Detroit, Hawaii, Iowa, New Mexico, Seattle, Utah, Atlanta). Incidence data for Asian/Pacific Islanders and Hispanics are from the SEER 13 Areas (SEER 9 Areas, San Jose-Monterey, Los Angeles, Alaska Native Registry and Rural Georgia). Mortality data are from NCHS public use data file for the total US.

* Rates are age-adjusted to the 2000 US Std Population (19 age groups - Census P25-1103).

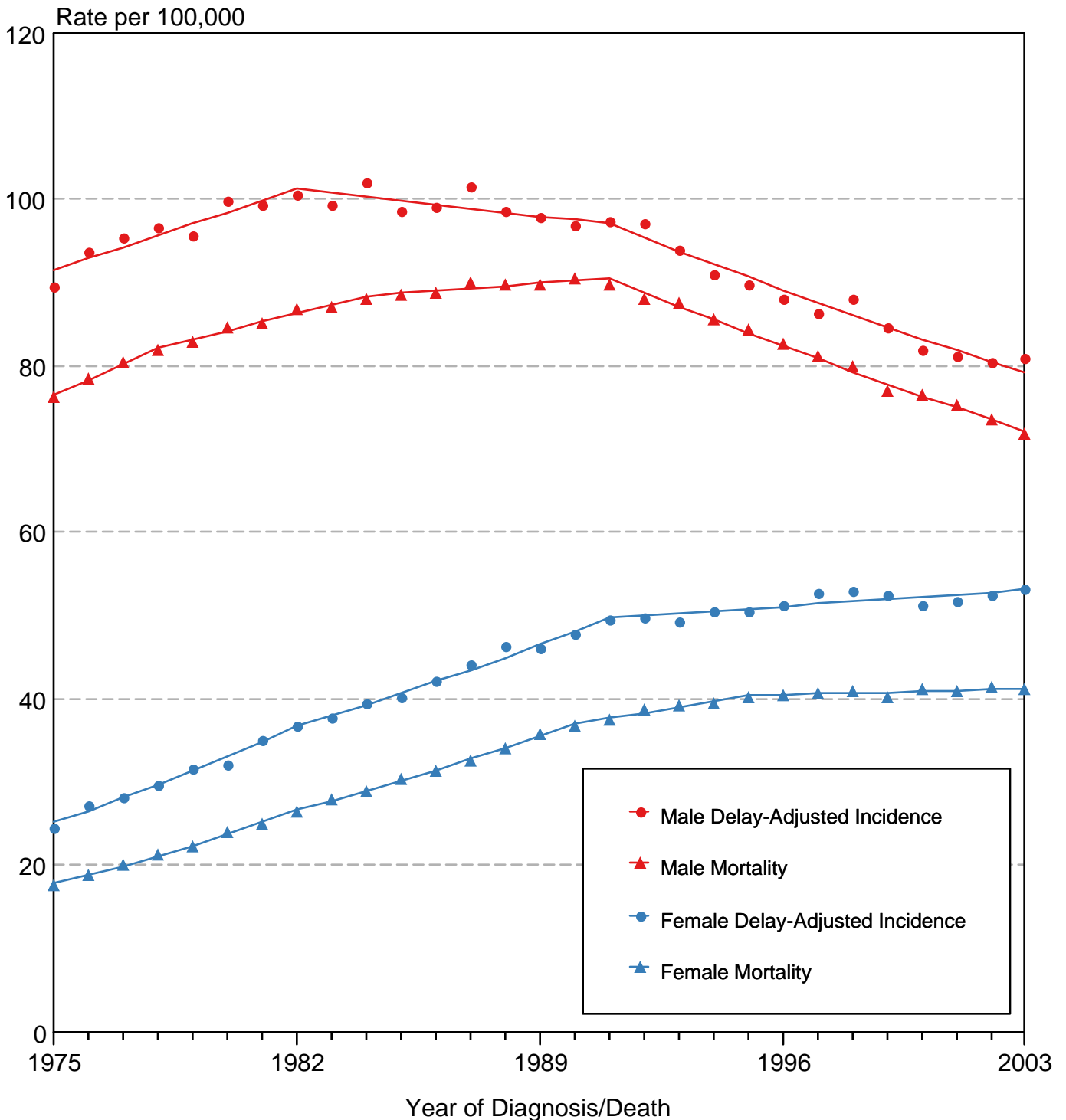
Regression lines are calculated using the Joinpoint Regression Program Version 3.1, April 2006, National Cancer Institute.

API = Asian/Pacific Islander.

~ AI/AN = American Indian/Alaska Native. Incidence data for AI/AN include cases from Connecticut, Detroit, Iowa, New Mexico, Seattle, Utah, Atlanta and the Alaska Native Registry for the time period 1992-2002. Mortality data are from the entire US for the time period 1992-2003.

^ Hispanic is not mutually exclusive from Whites, Blacks, Asian/Pacific Islanders, and American Indians/Alaska Natives. Incidence data for Hispanics are based on NHIA and exclude cases from Hawaii, Seattle, and the Alaska Native Registry. Mortality data for Hispanics exclude cases from Connecticut, Maine, Maryland, Minnesota, New Hampshire, New York, North Dakota, Oklahoma, and Vermont.

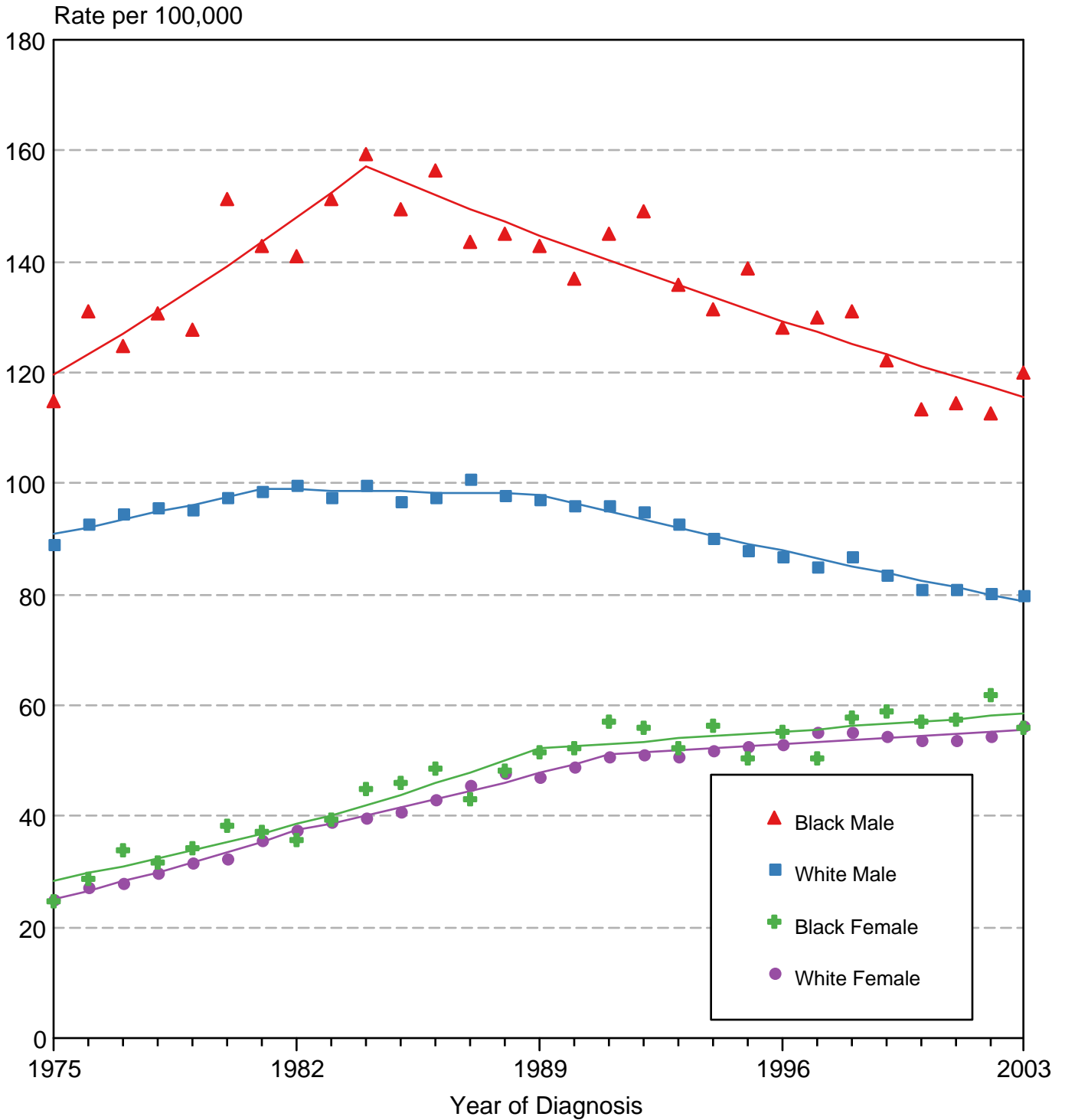
Cancer of the Lung & Bronchus SEER Delay-Adjusted Incidence & US Death Rates, 1975-2003, All Races, By Sex



Source: SEER 9 areas and NCHS public use data file for the total US.
 Rates are age-adjusted to the 2000 US Std Population (19 age groups - Census P25-1103).
 Regression lines are calculated using the Joinpoint Regression Program Version 3.1, April 2006, National Cancer Institute.

Figure XV-6

Cancer of the Lung & Bronchus SEER Delay-Adjusted Incidence, 1975-2003 By Sex and Race



Source: SEER 9 areas. Rates are age-adjusted to the 2000 US Std Population (19 age groups - Census P25-1103). Regression lines are calculated using the Joinpoint Regression Program Version 3.1, April 2006, National Cancer Institute.