

Table XXII-1
PANCREAS CANCER (Invasive)

TRENDS IN SEER INCIDENCE^a AND U.S. MORTALITY^b USING THE JOINPOINT REGRESSION PROGRAM, 1975-2002
WITH UP TO THREE JOINPOINTS BY RACE AND SEX

		<u>Joinpoint Segment 1</u>		<u>Joinpoint Segment 2</u>		<u>Joinpoint Segment 3</u>		<u>Joinpoint Segment 4</u>	
		Year	APC	Year	APC	Year	APC	Year	APC
<u>SEER Cancer Incidence^a</u>									
All Races	Male and Female	1975-1978	-2.2	1978-1984	1.2 ^c	1984-1989	-1.4	1989-2002	-0.1
All Races	Male	1975-1981	-1.8 ^c	1981-1985	1.2	1985-1989	-2.4	1989-2002	-0.1
All Races	Female	1975-1984	1.3 ^c	1984-2002	-0.3 ^c				
White	Male and Female	1975-1979	-1.9	1979-1984	1.7	1984-1987	-2.6	1987-2002	-0.1
White	Male	1975-1981	-2.3 ^c	1981-1984	1.7	1984-1993	-1.4 ^c	1993-2002	0.5
White	Female	1975-1984	1.2 ^c	1984-2002	-0.4 ^c				
Black	Male and Female	1975-2002	-0.3						
Black	Male	1975-1999	-0.4	1999-2002	-8.8				
Black	Female	1975-2002	0.0						
<u>SEER Delay-Adjusted Incidence^a</u>									
All Races	Male and Female	1975-1978	-2.1	1978-1984	1.2	1984-1990	-1.2 ^c	1990-2002	0.1
All Races	Male	1975-1981	-1.8 ^c	1981-1985	1.1	1985-1990	-2.1	1990-2002	0.1
All Races	Female	1975-1984	1.2 ^c	1984-2002	-0.2				
White	Male and Female	1975-1978	-2.5	1978-1984	1.0	1984-1993	-1.0 ^c	1993-2002	0.5 ^c
White	Male	1975-1981	-2.3 ^c	1981-1984	1.7	1984-1993	-1.5 ^c	1993-2002	0.8 ^c
White	Female	1975-1983	1.3 ^c	1983-2002	-0.2				
Black	Male and Female	1975-2002	-0.3						
Black	Male	1975-2002	-0.7 ^c						
Black	Female	1975-2002	0.1						
<u>U.S. Cancer Mortality^b</u>									
All Races	Male and Female	1975-2002	-0.1 ^c						
All Races	Male	1975-1986	-0.8 ^c	1986-2002	-0.3 ^c				
All Races	Female	1975-1984	0.8 ^c	1984-2002	0.1				
White	Male and Female	1975-1988	-0.3 ^c	1988-1991	0.6	1991-1996	-0.4	1996-2002	0.3 ^c
White	Male	1975-1986	-1.0 ^c	1986-2002	-0.2 ^c				
White	Female	1975-1984	0.6 ^c	1984-2002	0.1				
Black	Male and Female	1975-1990	1.1 ^c	1990-2002	-0.9 ^c				
Black	Male	1975-1992	0.5 ^c	1992-2002	-1.5 ^c				
Black	Female	1975-1986	2.4 ^c	1986-2002	-0.2				

Joinpoint Regression Program Version 3.0, April 2005, National Cancer Institute. (<http://srab.cancer.gov/joinpoint/>).

The APC is the Annual Percent Change based on rates age-adjusted to the 2000 US Std Population (19 age groups - Census P25-1130).

^a Trends are from the SEER 9 areas.

^b Trends are from the NCHS public use data file for the total US.

^c The APC is significantly different from zero (p<.05).

Table XXII-2
PANCREAS CANCER (Invasive)

SEER INCIDENCE RATES, AGE-ADJUSTED AND AGE-SPECIFIC RATES^a, BY RACE AND SEX

	All Races			Whites			Blacks		
	Total	Males	Females	Total	Males	Females	Total	Males	Females
<u>AGE-ADJUSTED RATES</u>									
<u>YEAR OF DIAGNOSIS:</u>									
1975	11.8	15.6	9.1	11.7	15.6	8.9	15.9	18.0	13.9
1976	12.0	14.8	9.9	11.8	14.5	9.8	17.6	22.7	14.0
1977	11.9	14.8	9.8	11.6	14.6	9.5	17.1	19.4	15.2
1978	11.1	14.1	8.9	10.8	13.9	8.6	15.1	20.0	11.5
1979	11.5	14.2	9.7	11.2	13.8	9.4	16.1	19.1	13.7
1980	11.5	14.2	9.6	11.1	13.7	9.2	17.9	21.8	15.5
1981	11.7	13.5	10.2	11.4	13.3	9.9	17.2	20.9	14.1
1982	11.7	13.8	10.2	11.4	13.4	9.9	16.9	21.0	14.0
1983	12.2	14.7	10.5	11.8	14.1	10.1	18.1	23.1	14.9
1984	12.2	13.9	10.9	12.0	13.9	10.6	17.2	18.4	16.3
1985	12.1	14.3	10.5	11.7	13.6	10.3	18.7	24.9	14.6
1986	11.7	13.8	10.2	11.4	13.5	9.8	17.4	20.2	15.7
1987	11.6	13.9	10.1	11.1	13.4	9.6	18.5	19.0	18.0
1988	11.7	13.7	10.2	11.1	13.4	9.6	18.6	19.6	17.4
1989	11.4	12.9	10.1	11.0	12.7	9.7	15.0	16.0	14.0
1990	11.3	12.8	10.1	11.0	12.5	9.9	15.2	18.8	12.6
1991	11.4	12.9	10.2	11.0	12.6	9.8	17.0	18.2	16.2
1992	11.6	13.2	10.3	11.3	12.9	10.0	17.3	19.8	15.8
1993	11.0	12.6	9.7	10.5	12.0	9.3	16.8	18.9	15.1
1994	11.4	13.2	9.9	10.9	12.3	9.7	17.5	21.5	14.6
1995	11.1	12.7	10.0	10.7	12.3	9.6	18.1	20.3	16.3
1996	11.3	12.9	9.9	10.9	12.5	9.6	17.1	19.8	14.9
1997	11.5	13.0	10.2	11.0	12.5	9.7	17.9	19.4	16.5
1998	11.5	13.1	10.2	11.2	13.0	9.8	14.7	16.2	13.9
1999	11.1	12.6	9.8	10.7	12.2	9.3	16.7	19.5	14.6
2000	11.3	13.2	9.8	11.0	12.8	9.5	15.7	18.1	13.3
2001	11.1	12.8	9.8	10.8	12.8	9.4	13.6	14.6	12.9
2002	11.2	12.5	10.0	11.0	12.7	9.5	15.6	14.8	15.5
<u>AGE-ADJUSTED RATES, 1998-2002</u>									
<u>AGE AT DIAGNOSIS:</u>									
All ages	11.2	12.8	9.9	11.0	12.7	9.5	15.2	16.6	14.0
Under 65	3.8	4.6	3.0	3.6	4.5	2.8	5.8	7.0	4.7
65 and over	62.8	69.7	57.8	61.8	69.6	56.2	80.7	82.6	78.4
All ages(IARC world std) ^b	6.9	8.0	5.9	6.7	7.8	5.6	9.6	10.9	8.6
<u>AGE-SPECIFIC RATES, 1998-2002</u>									
<u>AGE AT DIAGNOSIS:</u>									
<1	-	-	-	-	-	-	-	-	-
1-4	-	-	-	-	-	-	-	-	-
5-9	-	-	-	-	-	-	-	-	-
10-14	-	-	-	-	-	-	-	-	-
15-19	-	-	-	-	-	-	-	-	-
20-24	-	-	-	-	-	-	-	-	-
25-29	-	-	-	-	-	-	-	-	-
30-34	0.4	-	-	0.3	-	-	-	-	-
35-39	1.1	1.4	0.9	1.0	1.2	0.7	2.3	-	-
40-44	2.3	2.7	1.8	2.0	2.6	1.4	4.2	4.4	4.0
45-49	5.4	6.8	4.0	5.2	6.7	3.8	8.3	10.9	6.1
50-54	10.0	12.7	7.5	9.6	12.3	6.9	15.6	20.6	11.4
55-59	17.3	20.8	13.8	16.3	19.8	12.9	26.3	32.8	20.8
60-64	28.6	34.1	23.6	27.7	33.8	22.0	41.1	45.3	37.7
65-69	42.5	49.0	36.9	41.6	48.5	35.5	59.8	68.7	53.2
70-74	56.4	62.7	51.4	55.7	62.1	50.6	75.5	86.5	68.1
75-79	69.6	74.3	66.3	69.0	75.6	64.3	88.1	87.3	88.6
80-84	83.3	96.1	75.5	82.3	97.7	73.0	100.2	95.8	102.6
85+	85.1	91.6	82.3	83.1	89.1	80.5	102.0	82.2	109.6

^a SEER 9 areas. Rates are per 100,000 and are age-adjusted to the 2000 US Std Population (19 age groups - Census P25-1130), unless noted.

^b SEER 9 areas. Rates are per 100,000 and are age-adjusted to the IARC world standard population.

- Statistic not shown. Rate based on less than 25 cases for the time interval.

Table XXII-3
 PANCREAS CANCER (Invasive)

U.S. DEATH RATES, AGE-ADJUSTED AND AGE-SPECIFIC RATES^a, BY RACE AND SEX

	All Races			Whites			Blacks		
	Total	Males	Females	Total	Males	Females	Total	Males	Females
<u>AGE-ADJUSTED RATES</u>									
YEAR OF DEATH:									
1975	10.7	13.8	8.4	10.5	13.6	8.3	12.8	16.3	10.1
1976	10.7	13.6	8.6	10.5	13.4	8.4	12.9	16.0	10.5
1977	10.9	13.9	8.8	10.7	13.6	8.6	13.2	17.1	10.3
1978	10.8	13.6	8.8	10.6	13.5	8.6	12.9	15.9	10.7
1979	10.7	13.4	8.8	10.5	13.3	8.6	13.4	15.9	11.6
1980	10.6	13.1	8.8	10.4	12.8	8.6	13.8	16.5	11.8
1981	10.7	13.2	8.9	10.5	12.9	8.8	13.4	17.0	10.8
1982	10.6	13.1	8.8	10.3	12.8	8.6	14.1	17.1	11.9
1983	10.7	12.8	9.1	10.4	12.4	8.9	14.8	18.1	12.5
1984	10.8	13.0	9.2	10.5	12.6	8.9	15.0	17.5	13.1
1985	10.6	12.9	9.0	10.3	12.5	8.8	14.4	17.3	12.4
1986	10.6	12.5	9.2	10.3	12.2	8.9	14.6	16.7	13.0
1987	10.6	12.5	9.2	10.3	12.2	8.9	14.6	17.4	12.6
1988	10.5	12.5	9.0	10.1	12.2	8.6	14.5	17.1	12.7
1989	10.6	12.6	9.2	10.3	12.2	8.8	15.0	17.7	13.2
1990	10.7	12.6	9.3	10.3	12.2	8.9	15.2	18.1	13.2
1991	10.7	12.6	9.3	10.4	12.3	9.0	14.5	16.9	12.8
1992	10.7	12.6	9.3	10.3	12.2	8.9	15.4	18.2	13.4
1993	10.7	12.4	9.4	10.3	12.1	9.0	15.0	17.6	13.3
1994	10.6	12.4	9.3	10.3	12.0	9.0	15.2	17.7	13.4
1995	10.4	12.1	9.2	10.2	11.9	8.9	13.9	15.8	12.5
1996	10.5	12.1	9.2	10.2	11.8	8.9	14.4	16.4	13.0
1997	10.5	12.2	9.1	10.2	12.0	8.8	14.6	16.4	13.1
1998	10.5	12.3	9.2	10.2	12.0	8.8	14.5	16.5	13.1
1999	10.6	12.3	9.3	10.4	12.1	9.0	14.2	16.6	12.4
2000	10.5	12.1	9.3	10.3	12.0	9.0	14.0	15.8	12.7
2001	10.5	12.1	9.3	10.4	12.0	9.0	13.7	15.1	12.5
2002	10.5	12.2	9.2	10.3	12.0	8.9	13.7	15.4	12.3
<u>AGE-ADJUSTED RATES, 1998-2002</u>									
AGE AT DEATH:									
All ages	10.5	12.2	9.2	10.3	12.0	9.0	14.0	15.8	12.6
Under 65	3.1	3.9	2.5	3.0	3.8	2.4	4.5	5.7	3.6
65 and over	61.7	69.7	56.0	60.6	69.1	54.6	79.4	86.1	74.8
All ages(IARC world std) ^b	6.2	7.3	5.3	6.0	7.2	5.1	8.4	9.8	7.3
<u>AGE-SPECIFIC RATES, 1998-2002</u>									
AGE AT DEATH:									
<1	-	-	-	-	-	-	-	-	-
1-4	-	-	-	-	-	-	-	-	-
5-9	-	-	-	-	-	-	-	-	-
10-14	-	-	-	-	-	-	-	-	-
15-19	-	-	-	-	-	-	-	-	-
20-24	-	-	-	-	-	-	-	-	-
25-29	0.1	0.1	0.1	0.1	0.1	-	-	-	-
30-34	0.2	0.2	0.2	0.2	0.2	0.1	0.3	-	-
35-39	0.7	0.8	0.6	0.7	0.8	0.6	1.0	1.2	0.9
40-44	1.8	2.2	1.5	1.8	2.2	1.4	2.5	2.9	2.2
45-49	4.2	5.3	3.1	4.1	5.1	3.0	6.1	7.8	4.5
50-54	8.5	10.7	6.3	8.1	10.3	6.0	12.8	16.8	9.3
55-59	15.2	18.7	11.9	14.6	18.1	11.4	22.7	28.7	17.7
60-64	24.5	29.7	19.8	23.9	29.1	19.2	33.9	41.0	28.3
65-69	37.3	44.2	31.4	36.4	43.5	30.2	50.1	58.3	44.0
70-74	52.2	59.6	46.4	51.1	58.6	45.0	70.9	79.9	64.9
75-79	68.4	77.9	61.7	67.2	77.4	60.0	88.9	97.9	83.4
80-84	83.6	93.7	77.5	82.6	93.1	76.3	102.9	113.7	97.5
85+	98.0	104.8	95.2	96.8	105.0	93.4	118.3	108.3	122.1

^a NCHS public use data file for the total US. Rates are per 100,000 and are age-adjusted to the 2000 US Std Population (19 age groups - Census P25-1130), unless noted.

^b NCHS public use data file for the total US. Rates are per 100,000 and are age-adjusted to the IARC world standard population.

- Statistic not shown. Rate based on less than 25 cases for the time interval.

Table XXII-4
PANCREAS CANCER (Invasive)

SURVIVAL RATES, BY RACE, SEX, DIAGNOSIS YEAR, STAGE AND AGE

	All Races			Whites			Blacks		
	Total	Males	Females	Total	Males	Females	Total	Males	Females
<u>5-YR RELATIVE SURVIVAL RATES</u>									
YEAR OF DIAGNOSIS:									
1960-1963 ^a	-	-	-	1	1	2	1	0	3
1970-1973 ^a	-	-	-	2	2	2	2	0	3
1974-1976 ^b	2.6	2.9	2.2	2.6	3.0	2.1	2.7	2.3	3.0
1977-1979 ^b	2.4	2.2	2.6	2.3	2.1	2.4	3.8	2.8	4.8
1980-1982 ^b	3.0	2.6	3.4	2.8	2.5	3.0	4.5	3.2	5.7
1983-1985 ^b	3.3	2.8	3.7	2.9	2.5	3.2	5.0	4.4	5.5
1986-1988 ^b	3.6	3.3	3.8	3.2	3.0	3.3	6.0	6.0	5.9
1989-1991 ^b	4.1	3.7	4.5	4.2	4.0	4.4	4.0	3.0	4.8
1992-1994 ^b	4.6	4.3	4.8	4.7	4.3	5.1	3.8	4.2	3.3
1995-2001 ^b	4.6 ^d	4.5 ^d	4.7 ^d	4.4 ^d	4.7 ^d	4.2 ^d	4.4 ^d	2.9	5.6 ^d
1995-2001 ^b									
All Stages	4.6	4.5	4.7	4.4	4.7	4.2	4.4	2.9	5.6
Localized	16.4	15.2	17.3	15.1	15.1	14.9	18.1	10.1 ^e	22.4 ^e
Regional	7.0	6.7	7.3	7.1	7.4	6.8	5.8	3.2	7.8
Distant	1.8	2.0	1.6	1.7	1.9	1.5	1.5	1.7	1.3
Unstaged	4.3	4.4	3.9	3.8	4.6	3.0	5.3	3.3	6.6
<u>5-YR PERIOD SURVIVAL RATES^{bc}</u>									
YEAR OF DIAGNOSIS:									
1995-2001	5.0	4.9	5.1	4.8	5.1	4.6	4.0	2.7	5.1
<u>STAGE DISTRIBUTION (%) 1995-2001^b</u>									
All Stages									
Number of cases	15,467	7,518	7,949	12,475	6,087	6,388	1,782	828	954
Percent	100%	100%	100%	100%	100%	100%	100%	100%	100%
Localized	8	7	8	7	7	8	8	7	9
Regional	26	26	26	26	26	26	24	24	24
Distant	52	54	50	52	54	49	55	58	52
Unstaged	14	12	16	15	13	17	13	11	15
<u>5-YR RELATIVE SURVIVAL RATES, 1995-2001^b</u>									
AGE AT DIAGNOSIS:									
<45	17.9	15.8	21.1	18.2	17.0	20.6	14.0	10.6	19.2 ^e
45-54	7.7	6.4	10.0	8.1	7.2	9.6	4.9	2.5	8.8
55-64	4.7	4.5	5.0	4.6	4.5	4.7	4.2	3.6	5.4
65-74	3.5	3.1	3.8	3.4	3.5	3.3	3.6	1.4	4.9
75+	2.6	2.3	2.6	2.4	2.1	2.4	1.8	-	2.9
Under 65	7.1	6.3	8.4	7.1	6.6	7.8	5.8	4.2	8.3
65 and over	3.0	2.8	3.2	2.9	2.9	2.8	2.9	0.9	3.9

^a Rates are based on End Results data from a series of hospital registries and one population-based registry.
^b Rates are from the SEER 9 areas (San Francisco, Connecticut, Detroit, Hawaii, Iowa, New Mexico, Seattle, Utah, Atlanta). Rates are based on follow-up of patients into 2002.
^c Period survival provides a more up-to-date estimate of survival by piecing together the most recent conditional survival estimates from several cohorts. It is computed here using three calendar year blocks (1999-2001: 0-1 year survival), (1998-2000: 1-2 year survival), (1997-1999: 2-3 year survival), (1996-1998: 3-4 year survival), (1995-1997: 4-5 years survival).
^d The difference in rates between 1974-1976 and 1995-2001 is statistically significant (p<.05).
^e The standard error of the survival rate is between 5 and 10 percentage points.
^f The standard error of the survival rate is greater than 10 percentage points.
- Statistic could not be calculated.

Table XXII-5
PANCREAS CANCER (Invasive)

SURVIVAL RATES^a

By Year of Diagnosis

All Races, Males and Females

Year of Diagnosis

	1975- 1979	1980- 1984	1985	1986	1987	1988	1989	1990	1991	1992	1993	1994	1995	1996	1997	1998	1999	2000	2001
Relative Survival Rates (SEER ^b)																			
1-year	15.2	17.2	16.2	18.2	18.8	18.4	19.9	19.5	20.1	20.3	18.4	19.8	18.6	19.9	21.2	20.7	23.6	23.4	25.1
2-year	6.1	6.7	6.5	6.5	8.1	6.9	7.8	8.4	9.2	9.0	8.6	9.4	8.5	9.9	9.9	8.8	10.6	10.9	
3-year	3.7	4.3	5.1	4.5	5.8	4.7	4.9	5.5	6.5	5.9	5.3	6.8	5.4	6.7	6.9	5.8	6.7		
4-year	3.0	3.5	4.0	3.4	4.8	3.7	4.0	4.3	5.4	5.1	4.5	5.6	4.0	5.1	5.5	4.4			
5-year	2.5	3.1	3.3	2.9	4.2	3.6	3.5	3.9	4.8	4.7	3.7	5.3	3.6	4.5	5.0				
6-year	2.3	2.8	2.8	2.6	3.8	3.4	3.2	3.8	4.4	4.7	3.5	4.6	3.3	4.2					
7-year	2.2	2.6	2.7	2.4	3.4	3.3	3.0	3.5	4.1	4.1	3.3	4.2	3.3						
8-year	1.9	2.4	2.5	2.3	3.4	2.9	2.5	3.5	3.9	4.0	3.3	3.7							
9-year	1.9	2.3	2.2	2.3	3.2	2.7	2.2	3.2	3.9	3.7	3.1								
10-year	1.8	2.2	2.1	2.3	3.2	2.5	2.2	2.9	3.6	3.6									
11-year	1.8	2.1	2.1	2.3	3.2	2.5	2.2	2.8	3.3										
12-year	1.8	2.1	1.9	2.3	3.2	2.5	2.2	2.8											
13-year	1.7	2.0	1.9	2.2	2.8	2.5	2.2												
14-year	1.7	2.0	1.9	2.2	2.8	2.5													
15-year	1.6	1.9	1.8	1.7	2.8														
16-year	1.6	1.9	1.7	1.7															
17-year	1.6	1.9	1.7																
18-year	1.5	1.9																	
19-year	1.5																		
20-year	1.5																		

^a Survival rates are relative rates expressed as percents.
^b Rates are from the SEER 9 areas.

Table XXII-6
PANCREAS CANCER (Invasive)

SURVIVAL RATES^a

By Year of Diagnosis

All Races, Males

Year of Diagnosis

	1975- 1979	1980- 1984	1985	1986	1987	1988	1989	1990	1991	1992	1993	1994	1995	1996	1997	1998	1999	2000	2001
Relative Survival Rates (SEER ^b)																			
1-year	15.2	16.2	15.7	18.1	18.2	18.8	18.7	19.3	19.8	17.6	17.3	20.2	17.9	21.3	22.9	20.1	24.5	23.4	24.4
2-year	6.0	6.2	6.1	5.8	7.6	7.3	5.9	8.6	9.0	8.5	7.8	9.8	7.5	11.4	9.9	9.1	9.9	11.4	
3-year	3.5	3.9	4.8	3.8	5.4	4.9	3.7	5.2	6.6	5.3	4.8	7.8	4.2	7.6	6.7	5.7	6.3		
4-year	2.9	3.2	3.6	2.8	4.1	3.7	2.8	3.8	5.6	4.7	3.7	6.2	3.4	6.1	5.4	4.6			
5-year	2.5	2.7	2.6	2.2	4.1	3.6	2.6	3.4	5.0	4.1	2.9	5.8	2.9	5.4	4.5				
6-year	2.4	2.4	2.0	1.9	3.6	3.1	2.1	3.4	4.7	4.0	2.6	5.1	2.6	5.1					
7-year	2.3	2.1	2.0	1.7	3.1	3.1	2.1	3.2	4.2	3.4	2.3	4.7	2.6						
8-year	2.0	1.9	1.8	1.5	3.1	2.6	2.0	3.2	4.0	3.0	2.2	4.0							
9-year	1.9	1.8	1.5	1.4	3.1	2.3	1.5	2.9	4.0	3.0	2.1								
10-year	1.8	1.7	1.4	1.4	3.1	2.0	1.5	2.5	3.8	3.0									
11-year	1.8	1.7	1.3	1.4	3.1	1.9	1.5	2.4	3.7										
12-year	1.7	1.7	1.3	1.4	3.1	1.9	1.5	2.4											
13-year	1.7	1.7	1.3	1.4	2.5	1.9	1.5												
14-year	1.7	1.7	1.3	1.4	2.5	1.9													
15-year	1.7	1.6	1.3	0.7	2.5														
16-year	1.7	1.6	1.3	0.7															
17-year	1.7	1.6	1.3																
18-year	1.6	1.6																	
19-year	1.5																		
20-year	1.5																		

^a Survival rates are relative rates expressed as percents.
^b Rates are from the SEER 9 areas.

Table XXII-7
PANCREAS CANCER (Invasive)

SURVIVAL RATES^a

By Year of Diagnosis

All Races, Females

Year of Diagnosis

	1975- 1979	1980- 1984	1985	1986	1987	1988	1989	1990	1991	1992	1993	1994	1995	1996	1997	1998	1999	2000	2001
Relative Survival Rates (SEER ^b)																			
1-year	15.3	18.3	16.7	18.3	19.4	17.9	21.2	19.6	20.4	22.7	19.5	19.4	19.3	18.6	19.6	21.3	22.7	23.4	25.8
2-year	6.3	7.1	6.7	7.2	8.5	6.6	9.6	8.2	9.4	9.5	9.3	9.0	9.4	8.5	9.8	8.6	11.2	10.5	
3-year	3.9	4.7	5.4	5.1	6.2	4.5	6.0	5.7	6.3	6.3	5.8	5.8	6.5	5.8	7.0	5.8	7.1		
4-year	3.0	3.9	4.3	3.9	5.4	3.8	5.1	4.7	5.1	5.5	5.3	4.9	4.5	4.1	5.6	4.3			
5-year	2.4	3.5	3.9	3.5	4.2	3.6	4.4	4.5	4.5	5.2	4.4	4.7	4.3	3.6	5.4				
6-year	2.3	3.2	3.4	3.3	3.8	3.6	4.1	4.1	4.2	5.2	4.3	3.9	3.9	3.3					
7-year	2.0	3.1	3.2	3.1	3.6	3.4	3.7	3.7	4.0	4.8	4.2	3.5	3.7						
8-year	1.9	2.9	3.0	3.0	3.6	3.2	2.8	3.7	3.7	4.8	4.2	3.4							
9-year	1.8	2.7	2.8	3.0	3.4	2.9	2.8	3.4	3.6	4.4	4.1								
11-year	1.8	2.6	2.8	3.0	3.3	2.9	2.8	3.2	3.5	4.1									
10-year	1.8	2.4	2.8	3.0	3.1	2.9	2.7	3.2	2.8										
12-year	1.8	2.4	2.5	3.0	3.1	2.9	2.7	3.2											
13-year	1.6	2.3	2.2	3.0	3.0	2.9	2.7												
14-year	1.5	2.3	2.1	3.0	2.9	2.9													
15-year	1.4	2.2	2.0	2.7	2.9														
16-year	1.4	2.1	1.9	2.6															
17-year	1.4	2.1	1.9																
18-year	1.4	2.1																	
19-year	1.4																		
20-year	1.4																		

^a Survival rates are relative rates expressed as percents.
^b Rates are from the SEER 9 areas.

Table XXII-8
PANCREAS CANCER (Invasive)

Percent Diagnosed With Cancer In 10, 20 and 30 Years and In Remaining Lifetime,
 Given Cancer Free At Current Age By Race and Sex

Lifetime Risk (Percent) of Being Diagnosed (13 SEER Areas) With Cancer and
 Lifetime Risk (Percent) of Dying (Total U.S.) From Cancer

2000-2002

All Races

Current Age	Males				Females			
	+10 yrs	+20 yrs	+30 yrs	Eventually	+10 yrs	+20 yrs	+30 yrs	Eventually
0	0.00	0.00	0.00	1.26	0.00	0.00	0.00	1.27
10	0.00	0.00	0.01	1.28	0.00	0.00	0.01	1.28
20	0.00	0.01	0.05	1.29	0.00	0.01	0.04	1.29
30	0.01	0.05	0.20	1.30	0.01	0.04	0.14	1.29
40	0.05	0.20	0.53	1.31	0.03	0.13	0.40	1.29
50	0.16	0.50	0.95	1.31	0.11	0.38	0.81	1.29
60	0.37	0.85	1.17	1.24	0.28	0.74	1.12	1.24

Lifetime Risk of Being Diagnosed = 1.26%
 Lifetime Risk of Dying = 1.17%

Lifetime Risk of Being Diagnosed = 1.27%
 Lifetime Risk of Dying = 1.17%

Whites

Current Age	Males				Females			
	+10 yrs	+20 yrs	+30 yrs	Eventually	+10 yrs	+20 yrs	+30 yrs	Eventually
0	0.00	0.00	0.00	1.28	0.00	0.00	0.00	1.23
10	0.00	0.00	0.01	1.30	0.00	0.00	0.01	1.24
20	0.00	0.01	0.05	1.30	0.00	0.01	0.04	1.25
30	0.01	0.05	0.20	1.32	0.01	0.03	0.13	1.25
40	0.05	0.20	0.53	1.33	0.03	0.13	0.38	1.25
50	0.16	0.49	0.96	1.32	0.10	0.36	0.79	1.25
60	0.36	0.86	1.19	1.25	0.27	0.72	1.09	1.19

Lifetime Risk of Being Diagnosed = 1.28%
 Lifetime Risk of Dying = 1.18%

Lifetime Risk of Being Diagnosed = 1.23%
 Lifetime Risk of Dying = 1.16%

Blacks

Current Age	Males				Females			
	+10 yrs	+20 yrs	+30 yrs	Eventually	+10 yrs	+20 yrs	+30 yrs	Eventually
0	0.00	0.00	0.00	1.16	0.00	0.00	0.00	1.46
10	0.00	0.00	0.02	1.19	0.00	0.00	0.01	1.49
20	0.00	0.02	0.09	1.20	0.00	0.01	0.05	1.49
30	0.02	0.09	0.29	1.23	0.01	0.05	0.19	1.50
40	0.07	0.28	0.70	1.25	0.05	0.18	0.56	1.52
50	0.22	0.67	1.08	1.27	0.14	0.53	1.01	1.54
60	0.52	0.99	1.18	1.21	0.43	0.95	1.36	1.52

Lifetime Risk of Being Diagnosed = 1.16%
 Lifetime Risk of Dying = 1.13%

Lifetime Risk of Being Diagnosed = 1.46%
 Lifetime Risk of Dying = 1.33%

Devcan Version 6.0, April 2005, National Cancer Institute (<http://srab.cancer.gov/devcan/>).

Source: Incidence data are from the SEER 13 areas (San Francisco, Connecticut, Detroit, Hawaii, Iowa, New Mexico, Seattle, Utah, Atlanta, San Jose-Monterey, Los Angeles, Alaska Native Registry, Rural Georgia). Mortality data are from the NCHS public use data file for the total US.

Table XXII-9
PANCREAS CANCER (Invasive)

SEER INCIDENCE AND U.S. MORTALITY
AGE-ADJUSTED RATES AND TRENDS^a
 By Race/Ethnicity and Sex

Incidence^b

RACE/ETHNICITY	Rate 1998-2002			Trend 1992-2002		
	Rate per 100,000 persons			APC (%)		
	Total	Males	Females	Total	Males	Females
All Races	11.0	12.5	9.8	-0.3	-0.4 ^e	-0.3
White	10.9	12.5	9.5	0.0	0.1	-0.3
White Hispanic ^c	10.1	10.6	9.7	-0.2	-0.9	0.2
White Non-Hispanic ^c	10.8	12.6	9.3	0.0	0.3	-0.4
Black	14.9	16.3	13.6	-1.9 ^e	-2.5 ^e	-1.6 ^e
Asian/Pacific Islander	9.2	9.7	8.7	-0.5	-2.8 ^e	2.0 ^e
Amer Ind/Alaska Nat	7.8	8.4	7.4	-	-	-
Hispanic ^c	9.9	10.3	9.5	-0.2	-0.9	0.2

Mortality^d

RACE/ETHNICITY	Rate 1998-2002			Trend 1992-2002		
	Rate per 100,000 persons			APC (%)		
	Total	Males	Females	Total	Males	Females
All Races	10.5	12.2	9.2	-0.1	-0.3 ^e	-0.1
White	10.3	12.0	9.0	0.1	0.0	0.0
White Hispanic ^c	8.5	9.4	7.8	-0.2	-0.9 ^e	0.3
White Non-Hispanic ^c	10.3	12.1	8.9	0.2	0.1	0.1
Black	14.0	15.8	12.6	-1.1 ^e	-1.5 ^e	-0.8 ^e
Asian/Pacific Islander	7.3	8.0	6.8	-0.6	-2.1 ^e	0.9
Amer Ind/Alaska Nat	6.3	6.4	6.2	0.4	1.4	0.1
Hispanic ^c	8.4	9.2	7.6	-0.1	-0.8	0.2

- The APC is the Annual Percent Change over the time interval.
- Statistic not shown. Rate based on less than 25 cases for the time interval. Trend based on less than 10 cases for at least one year within the time interval.
- ^a Rates are age-adjusted to the 2000 US Std Population (19 age groups - Census P25-1130). Trends are based on rates age-adjusted to the 2000 US Std Population (19 age groups - Census P25-1130).
- ^b Incidence data are from the 13 SEER areas (San Francisco, Connecticut, Detroit, Hawaii, Iowa, New Mexico, Seattle, Utah, Atlanta, San Jose-Monterey, Los Angeles, Alaska Native Registry and Rural Georgia).
- ^c Hispanic and Non-Hispanic are not mutually exclusive from Whites, Blacks, Asian Pacific Islanders, and American Indians/Alaska Natives. Incidence data for Hispanics and Non-Hispanics do not include cases from Detroit, Hawaii, Alaska Native Registry and Rural Georgia. For mortality, information is included for all states except Connecticut, Maine, Maryland, Minnesota, New Hampshire, New York, North Dakota, Oklahoma and Vermont.
- ^d Mortality data are analyzed from a public use file provided by the National Center for Health Statistics (NCHS).
- ^e The APC is significantly different from zero (p<.05).

Table XXII-10
PANCREAS CANCER (Invasive)

AGE-ADJUSTED SEER INCIDENCE RATES AND SEER DEATH RATES^a
 By Registry, Race and Sex

	All Races			Whites			Blacks		
	Total	Males	Females	Total	Males	Females	Total	Males	Females
<u>SEER INCIDENCE RATES^b, 1998-2002</u>									
REGISTRY									
13 SEER Areas	11.0	12.5	9.8	10.9	12.5	9.5	14.9	16.3	13.6
11 SEER Areas	11.0	12.5	9.8	10.9	12.5	9.5	14.9	16.4	13.7
9 SEER Areas	11.2	12.8	9.9	11.0	12.7	9.5	15.2	16.6	14.0
San Francisco-Oakland	10.5	11.6	9.6	10.7	12.0	9.4	14.1	13.8	14.1
Connecticut	11.7	13.6	10.2	11.6	13.5	10.0	14.2	16.9	12.4
Metropolitan Detroit	13.1	15.0	11.7	12.3	14.2	10.8	16.7	18.2	15.3
Hawaii	11.8	12.6	11.2	10.8	12.4	9.6	-	-	-
Iowa	10.6	12.5	9.0	10.4	12.4	8.8	25.9	-	-
New Mexico	9.9	11.4	8.6	10.0	11.5	8.7	-	-	-
Seattle-Puget Sound	11.9	13.2	10.6	11.9	13.4	10.5	17.3	16.8	17.0
Utah	9.0	10.8	7.5	9.0	10.9	7.4	-	-	-
Metropolitan Atlanta	10.5	12.4	9.0	9.5	11.5	7.9	13.7	15.6	12.2
San Jose-Monterey	10.1	10.8	9.4	10.4	11.2	9.7	15.0	-	-
Los Angeles	10.6	12.0	9.5	10.7	12.4	9.5	14.1	15.4	12.9
<u>SEER DEATH RATES^c, 1998-2002</u>									
REGISTRY									
13 SEER Areas	10.3	11.7	9.2	10.3	11.8	9.1	13.7	15.1	12.4
11 SEER Areas	10.3	11.8	9.2	10.3	11.8	9.0	13.8	15.3	12.5
9 SEER Areas	10.5	12.0	9.3	10.3	11.9	9.0	14.0	15.6	12.6
San Francisco-Oakland	9.8	10.7	9.0	10.1	11.2	9.1	14.4	14.2	14.4
Connecticut	11.0	12.8	9.6	10.8	12.7	9.5	14.1	16.5	12.4
Metropolitan Detroit	11.6	13.3	10.3	11.0	13.0	9.7	14.1	15.2	13.1
Hawaii	10.2	11.1	9.5	9.8	11.8	7.9	-	-	-
Iowa	10.3	11.9	9.0	10.2	11.8	8.9	24.0	-	-
New Mexico	9.8	10.9	8.8	9.9	11.0	8.9	-	-	-
Seattle-Puget Sound	11.0	12.4	9.9	11.1	12.5	10.0	14.3	16.2	12.1
Utah	8.6	10.8	6.8	8.6	10.7	6.9	-	-	-
Metropolitan Atlanta	10.2	12.4	8.5	9.2	11.3	7.6	13.2	16.5	11.0
San Jose-Monterey	9.7	10.5	9.1	10.3	10.9	9.7	12.8	-	-
Los Angeles	10.0	11.4	8.9	10.1	11.8	8.9	13.2	14.2	12.3

^a Incidence and death rates are per 100,000 and are age-adjusted to the 2000 US Std Population (19 age groups - Census P25-1130).

^b The SEER 9 areas are San Francisco, Connecticut, Detroit, Hawaii, Iowa, New Mexico, Seattle, Utah, and Atlanta. The SEER 11 areas comprise the SEER 9 areas plus San Jose-Monterey and Los Angeles. The SEER 13 areas comprise the SEER 11 areas plus the Alaska Native Registry and Rural Georgia.

^c NCHS public use data file for the total US with analyses limited to the SEER geographic areas.

- Statistic could not be calculated or populations are inadequate.

Table XXII-11
PANCREAS CANCER (Invasive)

AVERAGE ANNUAL AGE-ADJUSTED CANCER DEATH^a RATES BY STATE, ALL RACES, 1998-2002

Males and Females

State	Rate	SE	Rank	PD
TOTAL U.S.	10.5	0.03		
High Five States				
District of Columbia	12.4 ^b	0.67	(01)	18.1
Louisiana	12.3 ^{bc}	0.25	(02)	17.1
South Carolina	11.6 ^c	0.25	(03)	10.5
Rhode Island	11.6	0.44	(04)	10.5
Mississippi	11.6	0.29	(05)	10.5
Low Five States				
Wyoming	9.6	0.64	(47)	-8.6
Idaho	9.6	0.40	(48)	-8.6
Arizona	9.3 ^c	0.19	(49)	-11.4
West Virginia	9.2 ^c	0.29	(50)	-12.4
Utah	8.6 ^{bc}	0.33	(51)	-18.1

Males

State	Rate	SE	Rank	PD
TOTAL U.S.	12.2	0.05		
High Five States				
Louisiana	14.8 ^{bc}	0.43	(01)	21.3
District of Columbia	14.6 ^b	1.17	(02)	19.7
Mississippi	13.7 ^b	0.50	(03)	12.3
South Carolina	13.7 ^b	0.43	(04)	12.3
Rhode Island	13.2	0.75	(05)	8.2
Low Five States				
North Dakota	10.9 ^b	0.83	(47)	-10.7
New Mexico	10.9 ^b	0.54	(48)	-10.7
Utah	10.8 ^b	0.57	(49)	-11.5
Arizona	10.5 ^{bc}	0.31	(50)	-13.9
Idaho	10.3 ^b	0.63	(51)	-15.6

Females

State	Rate	SE	Rank	PD
TOTAL U.S.	9.2	0.03		
High Five States				
District of Columbia	10.8 ^b	0.79	(01)	17.4
Louisiana	10.4 ^c	0.29	(02)	13.0
Rhode Island	10.4	0.55	(03)	13.0
Massachusetts	10.1 ^c	0.23	(04)	9.8
New Jersey	10.1 ^c	0.20	(05)	9.8
Low Five States				
Montana	8.2	0.55	(47)	-10.9
Arizona	8.1 ^c	0.24	(48)	-12.0
West Virginia	7.8 ^{bc}	0.36	(49)	-15.2
Wyoming	7.6 ^b	0.77	(50)	-17.4
Utah	6.8 ^{bc}	0.40	(51)	-26.1

For additional detailed cancer statistics by state, please visit the State Cancer Profiles website. <http://statecancerprofiles.cancer.gov/>

- ^a NCHS public use data file. Rates are per 100,000 and are age-adjusted to the 2000 US Std Population (19 age groups - Census P25-1130).
- ^b Absolute percent difference between state rate and total U.S. rate is 15% or more.
- ^c Difference between state rate and total U.S. rate is statistically significant (p<=.0002).
- SE Standard error of the rate.
- PD Percent difference between state rate and total U.S. rate.

Table XXII-12
PANCREAS CANCER (Invasive)

Estimated United States Cancer Prevalence Counts^a on January 1, 2002
 By Race/Ethnicity, Sex and Years Since Diagnosis

Years Since Diagnosis	0 to <5	5 to <10	10 to <15	15 to <20	20 to <25	0 to <12 ^e	0 to <27 ^e	>=27 ^g	Complete ^h
<u>Race/Sex</u>									
All Races ^b	19,344	3,085	1,717	801	459	23,263	25,555	524	26,079
Males	9,438	1,458	766	336	191	11,294	12,274	217	12,491
Females	9,906	1,627	951	465	268	11,969	13,281	307	13,588
White ^b	16,499	2,496	1,353	555	389	19,740	21,415	428	21,843
Males	8,296	1,174	628	251	177	9,838	10,593	193	10,786
Females	8,203	1,322	725	304	212	9,902	10,822	235	11,057
Black ^b	1,964	402	303	172	67	2,434	2,934	213	3,147
Males	779	172	131	51	11	976	1,161	84	1,245
Females	1,185	230	172	121	56	1,458	1,773	129	1,902
Asian/Pacific Islander ^c	580	81	+	+	+	684	+	+	+
Males	241	37	+	+	+	287	+	+	+
Females	339	44	+	+	+	397	+	+	+
Hispanic ^d	879	266	+	+	+	1,175	+	+	+
Males	406	120	+	+	+	547	+	+	+
Females	473	146	+	+	+	628	+	+	+

Estimated prevalence percent^a on January 1, 2002, of the SEER 11 population diagnosed in the previous 10 years
 By Age at Prevalence, Race/Ethnicity and Sex

Age at Prevalence	Age Specific (Crude)										Age-Adjusted ^f
	All Ages	0-9	10-19	20-29	30-39	40-49	50-59	60-69	70-79	80+	All Ages
<u>Race/Sex</u>											
All Races ^c	0.0070%	-	0.0002%	0.0003%	0.0011%	0.0042%	0.0118%	0.0255%	0.0397%	0.0369%	0.0077%
Males	0.0068%	-	-	-	0.0010%	0.0045%	0.0132%	0.0279%	0.0412%	0.0413%	0.0082%
Females	0.0073%	-	0.0003%	0.0005%	0.0013%	0.0039%	0.0105%	0.0233%	0.0386%	0.0346%	0.0072%
White ^c	0.0073%	-	0.0002%	0.0004%	0.0011%	0.0040%	0.0119%	0.0251%	0.0398%	0.0353%	0.0076%
Males	0.0073%	-	-	-	0.0010%	0.0047%	0.0133%	0.0286%	0.0423%	0.0409%	0.0084%
Females	0.0073%	-	0.0002%	0.0006%	0.0012%	0.0034%	0.0105%	0.0220%	0.0378%	0.0324%	0.0069%
Black ^c	0.0062%	-	-	-	0.0015%	0.0055%	0.0138%	0.0324%	0.0383%	0.0393%	0.0087%
Males	0.0051%	-	-	-	0.0020%	0.0049%	0.0148%	0.0302%	0.0290%	0.0278%	0.0077%
Females	0.0071%	-	-	-	0.0060%	0.0130%	0.0341%	0.0444%	0.0447%	0.0447%	0.0092%
Asian/Pacific Islander ^c	0.0064%	-	-	-	0.0009%	0.0039%	0.0090%	0.0226%	0.0396%	0.0503%	0.0075%
Males	0.0056%	-	-	-	-	0.0024%	0.0110%	0.0217%	0.0383%	0.0522%	0.0073%
Females	0.0072%	-	-	-	0.0015%	0.0052%	0.0072%	0.0233%	0.0406%	0.0490%	0.0077%
Hispanic ^d	0.0030%	-	-	0.0003%	0.0007%	0.0027%	0.0069%	0.0191%	0.0406%	0.0339%	0.0064%
Males	0.0026%	-	-	-	-	0.0024%	0.0074%	0.0202%	0.0488%	0.0299%	0.0066%
Females	0.0033%	-	-	0.0007%	0.0009%	0.0030%	0.0066%	0.0182%	0.0348%	0.0361%	0.0061%

^a US 2002 cancer prevalence counts are based on 2002 cancer prevalence proportions from the SEER registries and 1/1/2002 US population estimates based on the average of 2001 and 2002 population estimates from the US Bureau of the Census. Prevalence was calculated using the First Malignant Primary Only for a person.

^{b c d} Statistics based on ^b SEER 9 Areas ^c SEER 11 Areas and Rural Georgia ^d SEER 11 Areas excluding Hawaii and Detroit.

^e Maximum limited-duration prevalence: 27 years for 1975-2002 SEER 9 data; 12 years for 1990-2002 SEER 11 data (used to calculate prevalence for Hispanics and Asian Pacific Islanders).

^f Percentages are age-adjusted to the 2000 US standard population by 5-year age groups.

^{g h} (g) Cases diagnosed more than 27 years ago were estimated using the completeness index method (Capocaccia et. al. 1997, Merrill et. al. 2000). (h) Complete prevalence is obtained by summing 0 to <27 and >=27.

- Statistic not shown. Statistic based on fewer than 5 cases estimated alive in SEER for the time interval.

+ Not available.

SEER Incidence, Delay Adjusted Incidence and US Death Rates+ Pancreas Cancer, by Race and Sex

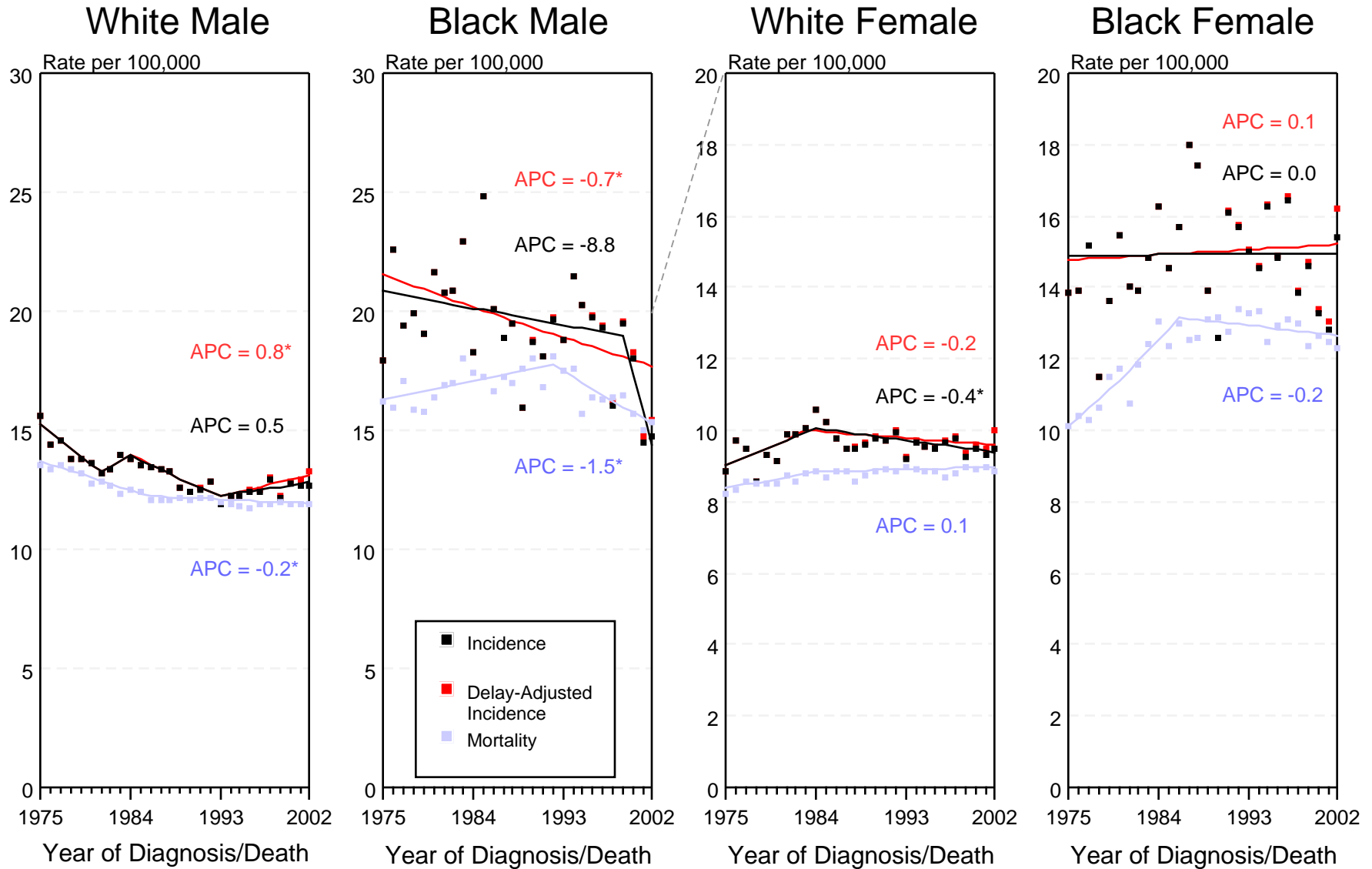


Figure XXII-1

+ Source: SEER 9 areas and NCHS public use data file for the total US. Rates are age-adjusted to the 2000 US Std Population (19 age groups - Census P25-1103). Regression lines and APCs are calculated using the Joinpoint Regression Program Version 3.0, April 2005, National Cancer Institute.

The APC is the Annual Percent Change for the regression line segments. The APC shown on the graph is for the most recent trend.

* The APC is significantly different from zero ($p < 0.05$).

SEER Incidence and US Death Rates + Pancreas Cancer, Both Sexes

Joinpoint Analyses for 1975-2002 for Whites and Blacks

Rates for 1992-2002 for Asian/Pacific Islander, American Indian/Alaska Native and Hispanic

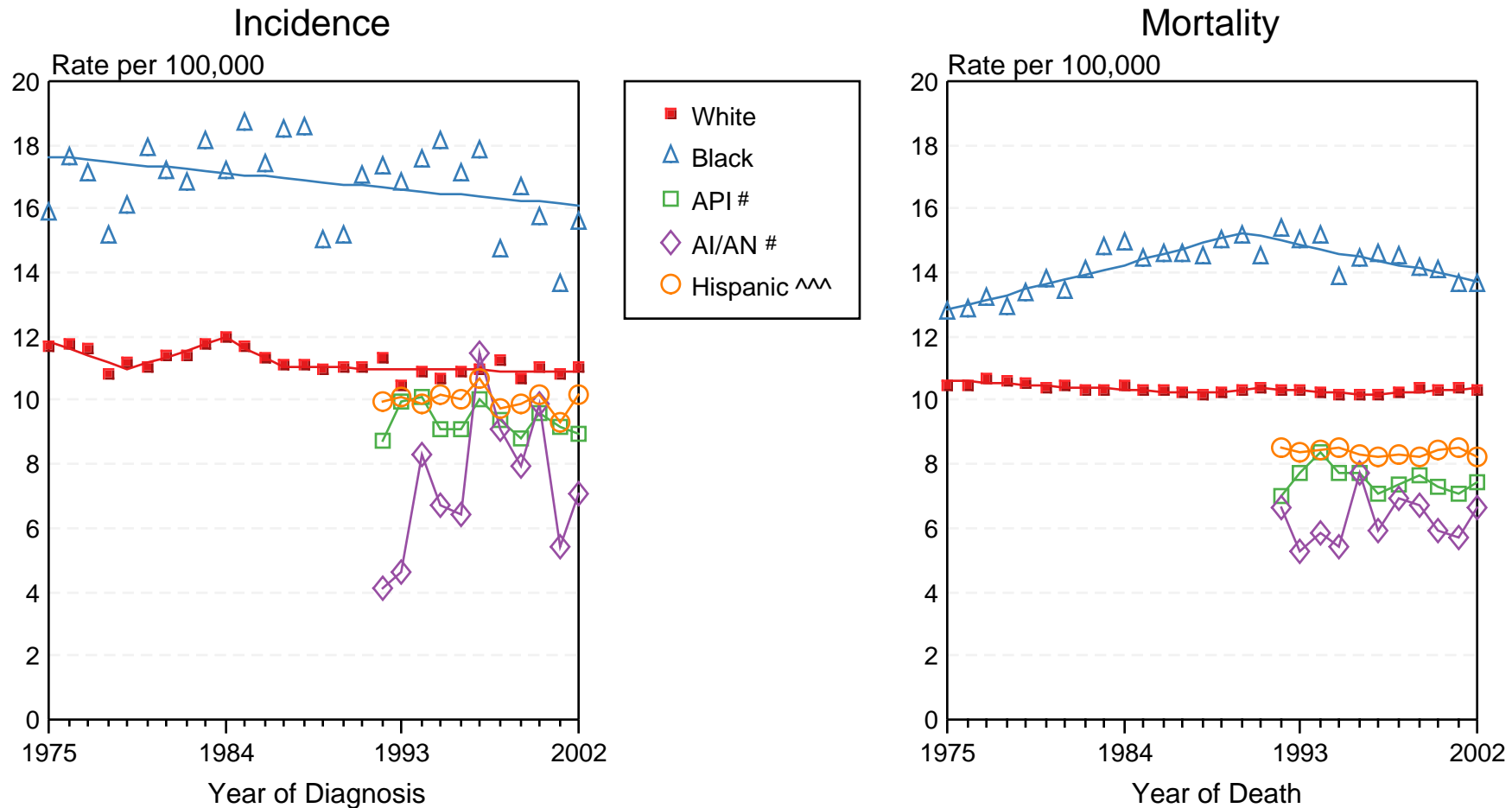


Figure XXII-2

+ Source: Incidence data for whites and blacks is from the SEER 9 areas (San Francisco, Connecticut, Detroit, Hawaii, Iowa, New Mexico, Seattle, Utah, Atlanta). Incidence data for Asian/Pacific Islanders, American Indian/Alaska Natives and Hispanics is from the SEER 13 Areas (SEER 9 Areas, San Jose-Monterey, Los Angeles, Alaska Native Registry and Rural Georgia). Mortality data is from NCHS public use data file for the total US. Rates are age-adjusted to the 2000 US Std Population (19 age groups - Census P25-1103). Regression lines for whites and blacks are calculated using the Joinpoint Regression Program Version 3.0, April 2005, National Cancer Institute.

API = Asian/Pacific Islander. AI/AN = American Indian/Alaska Native.

^^ Hispanic is not mutually exclusive from Whites, Blacks, Asian/Pacific Islanders, and American Indians/Alaska Natives. Incidence data for Hispanics excludes cases from Detroit, Hawaii, Alaska Native Registry and Rural Georgia. Mortality data for Hispanics excludes cases from Connecticut, Maine, Maryland, Minnesota, Oklahoma, New Hampshire, New York, North Dakota, and Vermont.