

R7W R5W R3W R1W R1E R3E

T1N

T1S

T3S

T5S

T7S

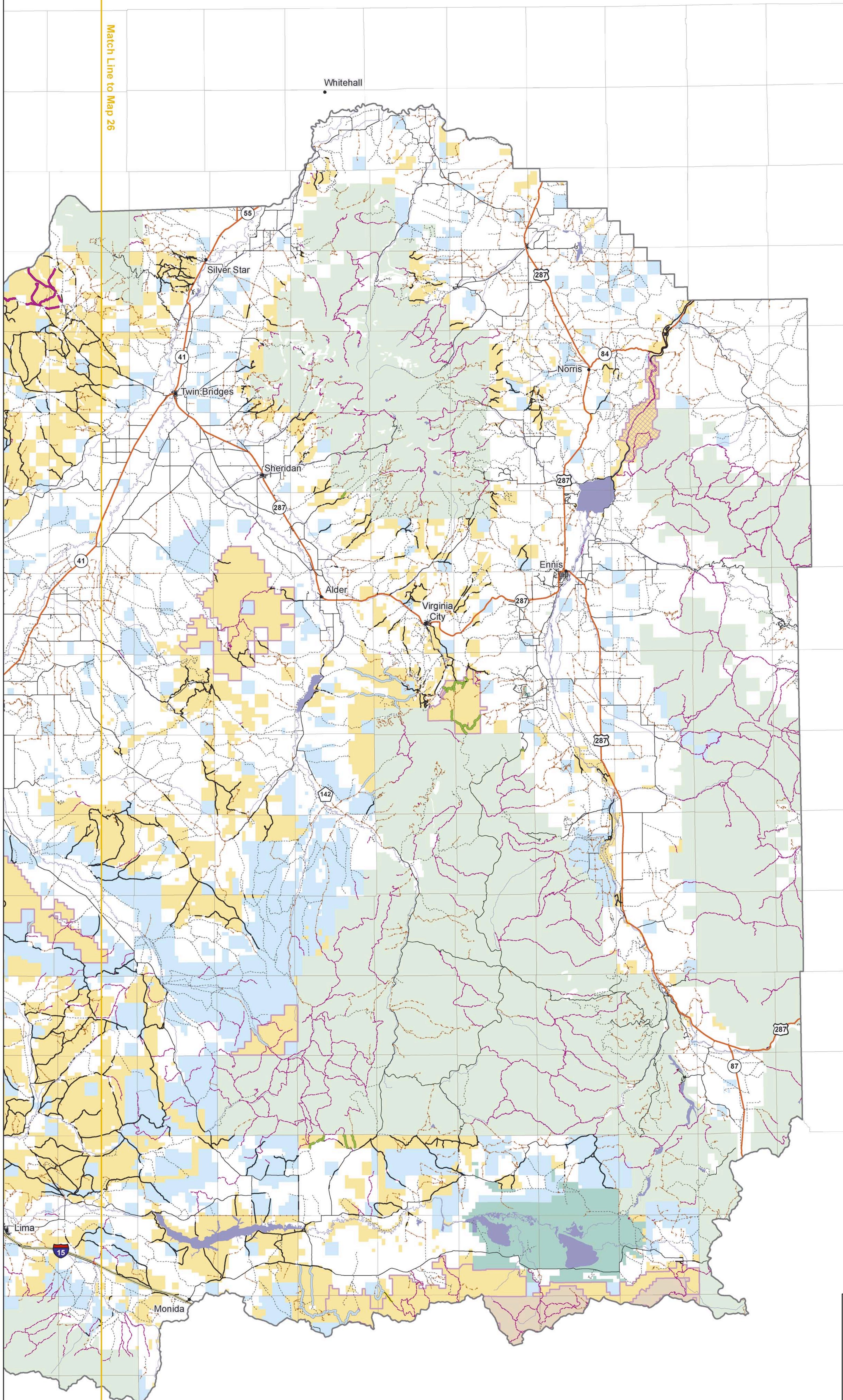
T9S

T11S

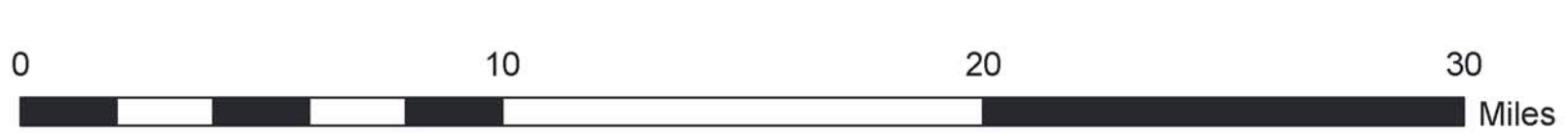
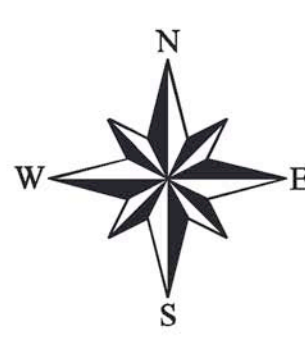
T13S

Match Line to Map 26

Match Line to Map 26



	Bureau of Land Management
	Fish and Wildlife Service
	Forest Service
	National Park Service
	Agricultural Research Service
	Private
	State of Montana
	Lakes
	Bear Trap Wilderness
	Wilderness Study Areas
	Dillon Field Office Boundary
Dates Closed	
	Open Year Round
	April 1 - July 1
	December 1 - May 15
	December 1 - June 30
	October 1 - July 14
	October 15 - December 1
	October 15 - May 15
Road Standard	
	Interstate
	Highway
	Improved
	Unimproved
	4 Wheel Drive
	Trail



US DEPARTMENT OF THE INTERIOR
Bureau of Land Management

**Dillon Field Office
Resource Management Plan
Motorized Route Designations
East Half**

Dillon, Montana

Albers Equal Area, North American Datum 1983

Map uses baseline of existing routes based on several digital databases and field inventory conducted in 2001. Designated routes across BLM administered lands would be open for motorized travel by wheeled vehicles either yearlong or seasonally if access is available to the public. Routes shown as designated across State lands are intended to show desirable access and would be coordinated with appropriate State agencies. Routes already designated as open across state lands by the Interagency Travel Plan would remain open even if not indicated on this map.

February 2006
Map 27

This map is intended for display purposes. No warranty is made by the Bureau of Land Management as to the accuracy, reliability, or completeness of these data for individual or aggregate use with other data, or for purposes not intended by BLM. This map may not meet National Map Accuracy Standards. This product was developed through digital means and information may be updated without notification.