

R19W R17W R15W R13W R11W R9W R7W R5W R3W R1W R1E R3E

T1N

T1S

T3S

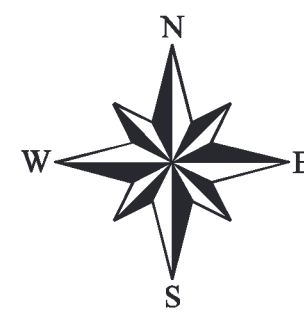
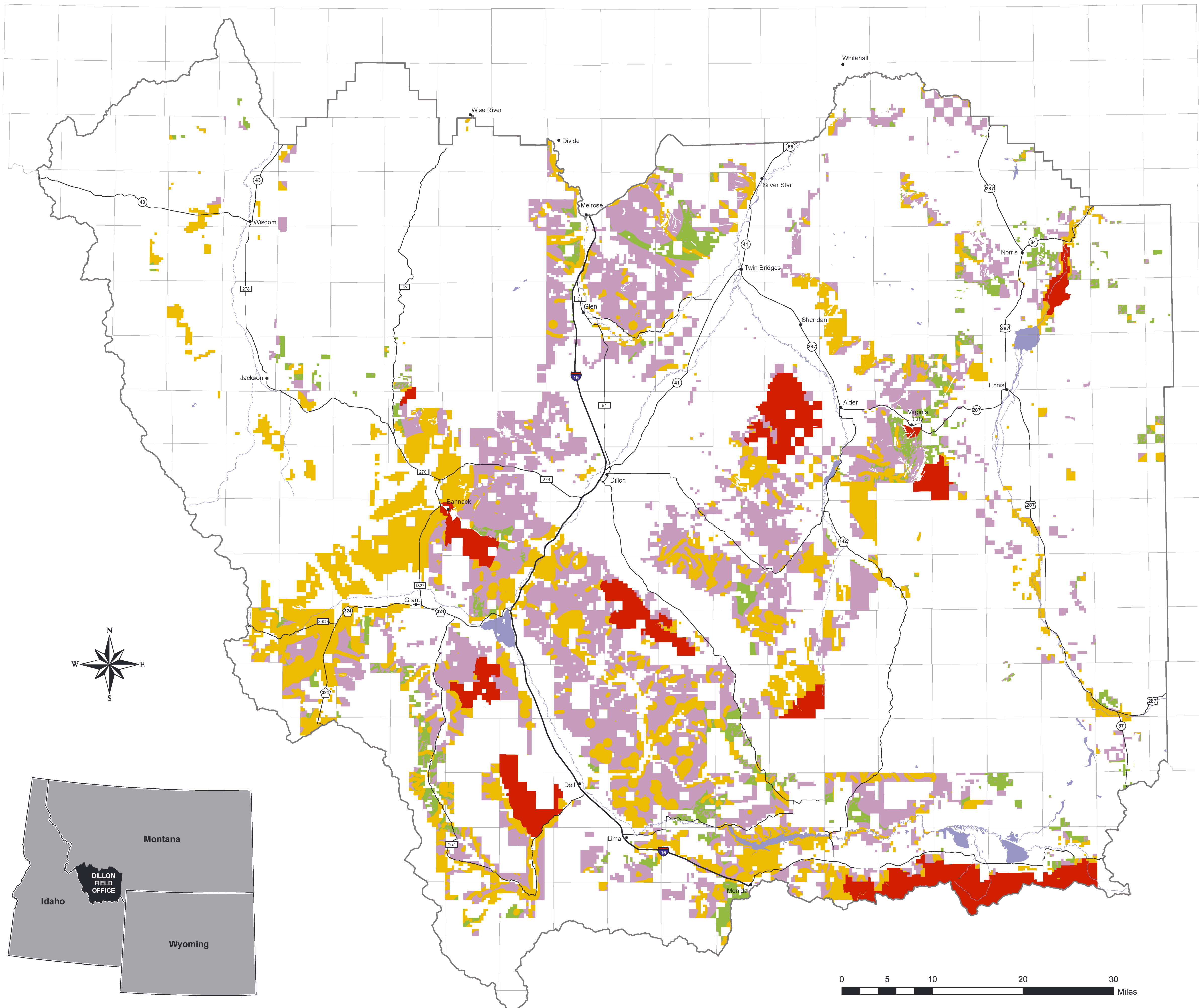
T6S

T7S

T9S

T11S

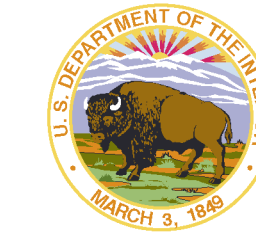
T13S



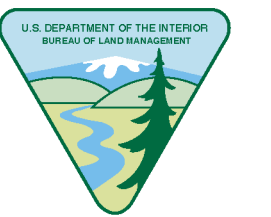
US DEPARTMENT OF THE INTERIOR
Bureau of Land Management

Dillon Field Office
Resource Management Plan

Oil and Gas Leasing Availability



Dillon, Montana



- No Lease
- No Surface Occupancy
- Timing Limitations - Controlled Surface Use
- Standard Lease Terms
- Lakes, Rivers, & Streams
- Dillon Field Office Boundary

Map shows availability of BLM-administered federal mineral estate and types of stipulations applied to available lands. Stipulated areas may change over time as part of plan maintenance as additional inventory information becomes available. Note that vehicle use restrictions and visual resource management considerations apply to all BLM lands including those subject to Standard Lease Terms.

This map is intended for display purposes. No warranty is made by the Bureau of Land Management as to the accuracy, reliability, or completeness of these data for individual or aggregate use with other data, or for purposes not intended by BLM. This map may not meet National Map Accuracy Standards. This product was developed through digital means and information may be updated without notification.

Albers Equal Area, North American Datum 1983
First Standard Parallel: 43.50, Second Standard Parallel: 48.00
Central Meridian: -106.00, Latitude of Origin: 42.50
False Easting: 0.00, False Northing: 0.00

February 2006