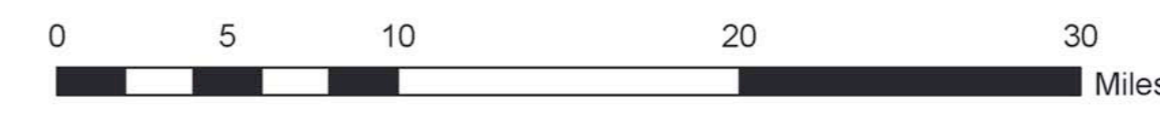
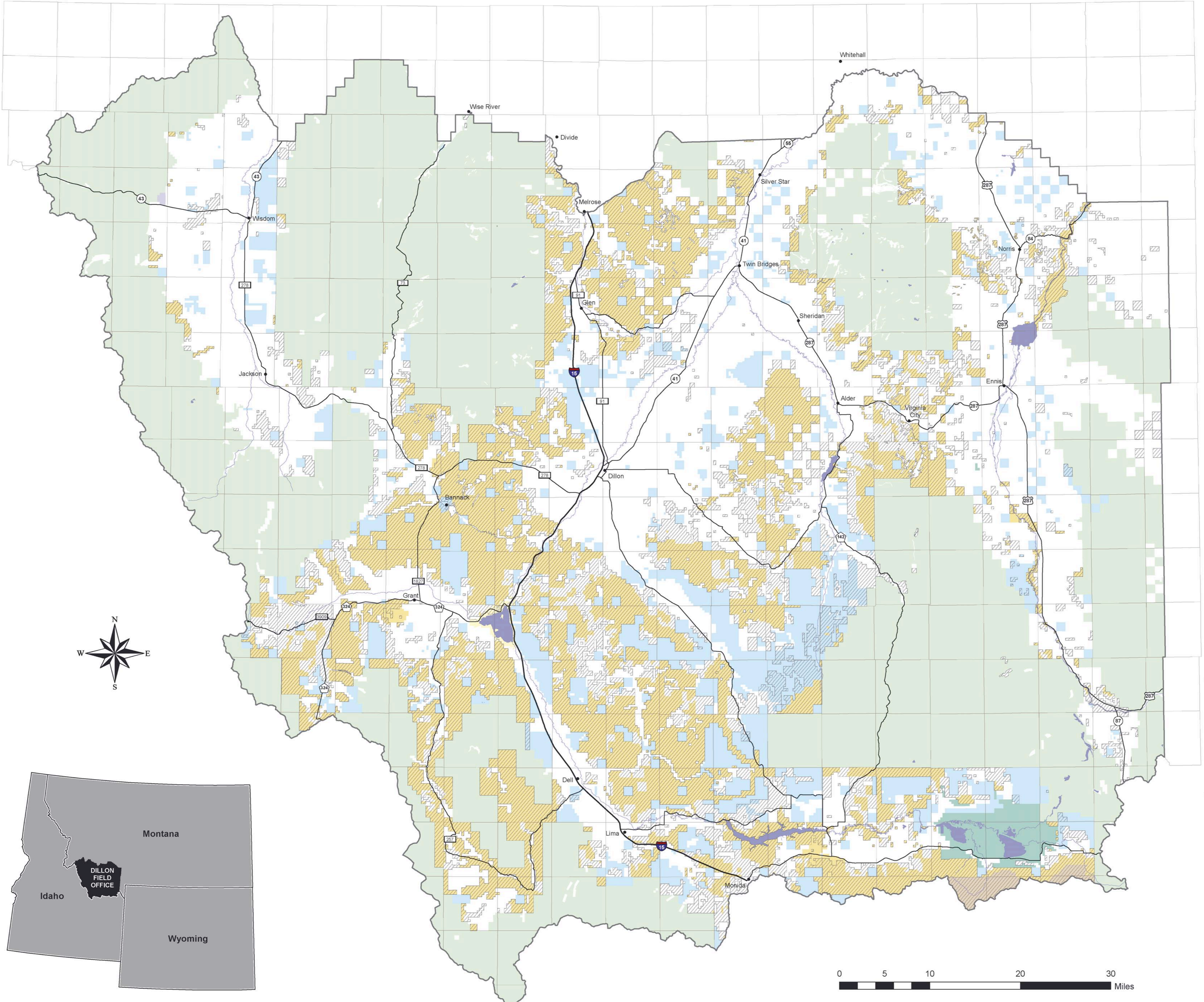


R19W R17W R15W R13W R11W R9W R7W R5W R3W R1W R1E R3E



US DEPARTMENT OF THE INTERIOR
Bureau of Land Management

**Dillon Field Office
Resource Management Plan
Land Status in the
Planning Area**



Dillon, Montana



- BLM-Administered Federal Minerals
- Bureau of Land Management
- Bureau of Reclamation
- Fish and Wildlife Service
- Forest Service
- National Park Service
- Other Federal
- Private
- State of Montana
- Lakes
- Dillon Field Office Boundary

Map shows ownership and administration of lands in the planning area.

This map is intended for display purposes. No warranty is made by the Bureau of Land Management as to the accuracy, reliability, or completeness of these data for individual or aggregate use with other data, or for purposes not intended by BLM. This map may not meet National Map Accuracy Standards. This product was developed through digital means and information may be updated without notification.

Albers Equal Area, North American Datum 1983
First Standard Parallel: 43.50; Second Standard Parallel: 48.00
Central Meridian: -106.00; Latitude of Origin: -42.50
False Easting: 0.00; False Northing: 0.00

February 2006