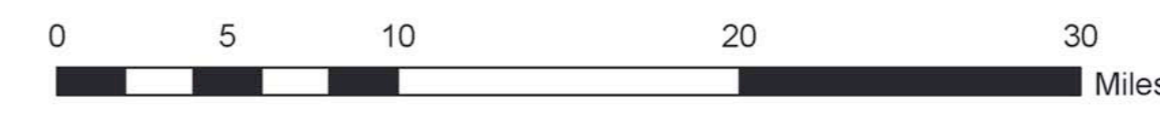
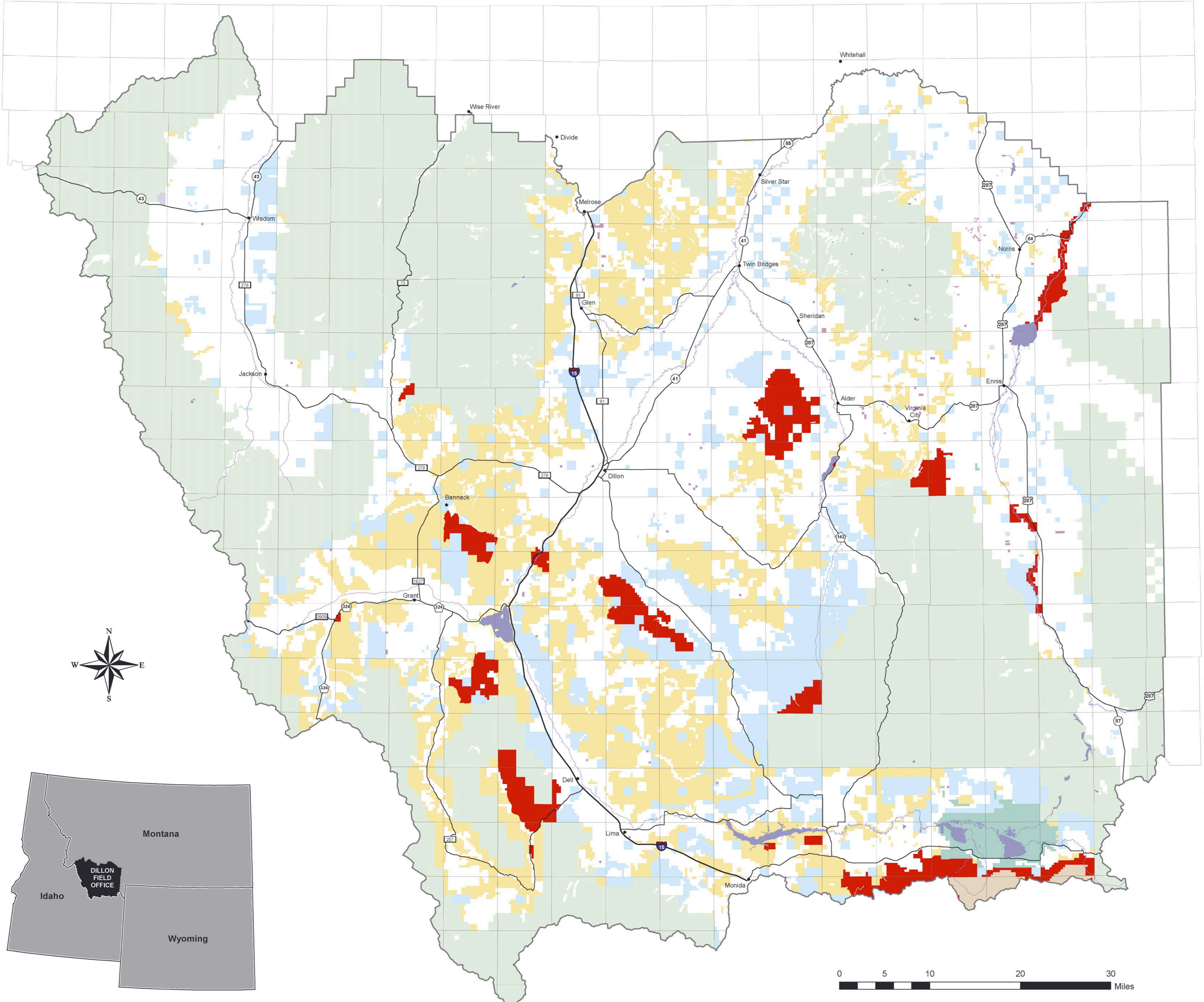


R19W R17W R15W R13W R11W R9W R7W R5W R3W R1W R1E R3E



T1N
T1S
T3S
T5S
T7S
T9S
T11S
T13S

US DEPARTMENT OF THE INTERIOR
Bureau of Land Management

Dillon Field Office
Resource Management Plan

Land Adjustment Categories



Dillon, Montana



- Land Adjustment Category 1
- Land Adjustment Category 2
- Land Adjustment Category 3
- Bureau of Reclamation
- Fish and Wildlife Service
- Forest Service
- National Park Service
- Other Federal
- Private
- State of Montana
- Lakes
- Dillon Field Office Boundary

Map shows allocations of lands to adjustment categories:
 Category 1 lands are managed for retention and allow no disposal.
 Category 2 lands are managed for retention but allow limited adjustment.
 Category 3 lands are targeted for potential disposal.
 Some small parcels may not display within Category 3. See Appendix I in the Approved Plan for a list of Category 3 parcels by legal description.

This map is intended for display purposes. No warranty is made by the Bureau of Land Management as to the accuracy, reliability, or completeness of these data for individual or aggregate use with other data, or for purposes not intended by BLM. This map may not meet National Map Accuracy Standards. This product was developed through digital means and information may be updated without notification.

Albers Equal Area, North American Datum 1983
 First Standard Parallel: 43.50; Second Standard Parallel: 48.00
 Central Meridian: -106.00; Latitude of Origin: -42.50
 False Easting: 0.00; False Northing: 0.00

February 2006