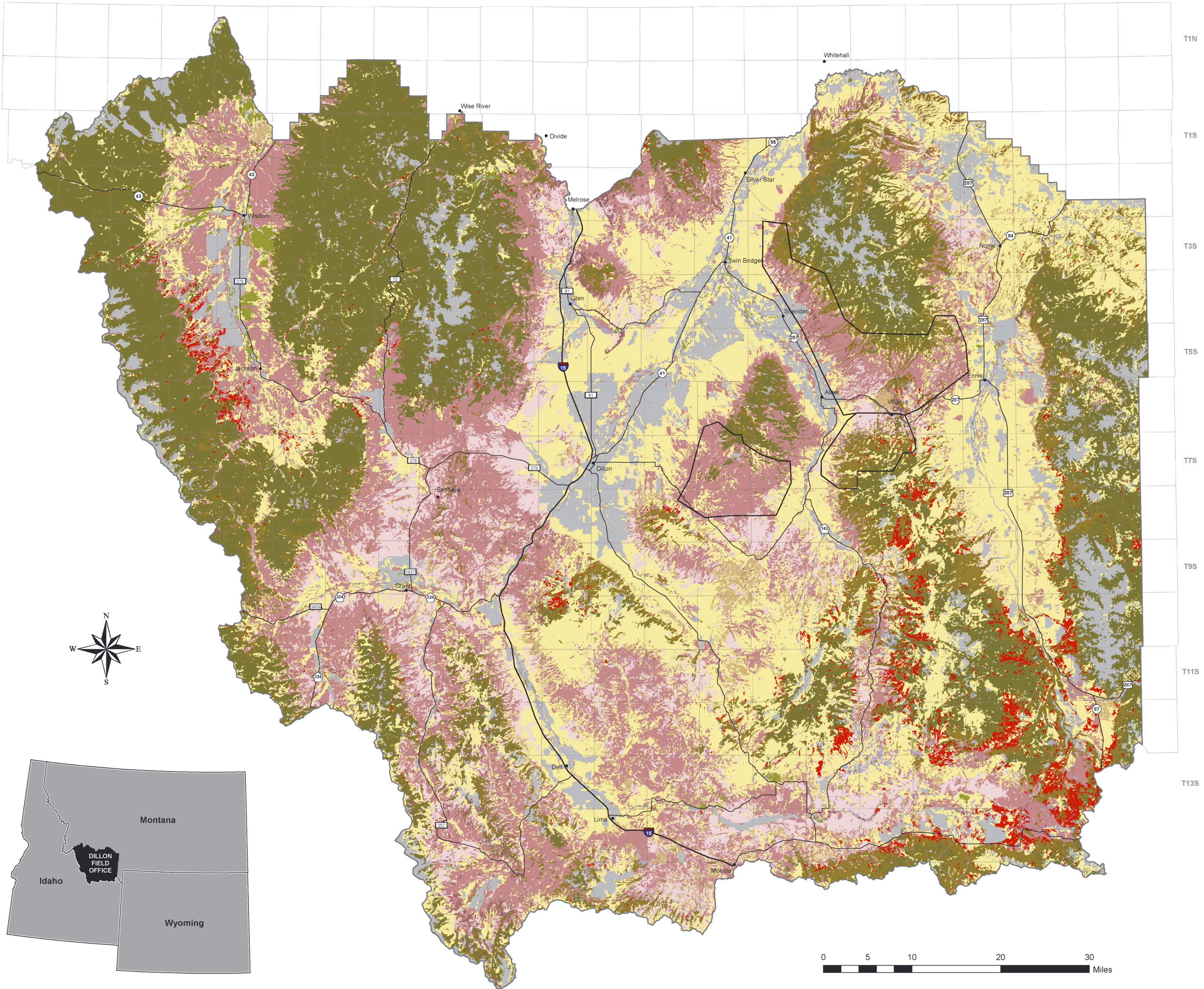
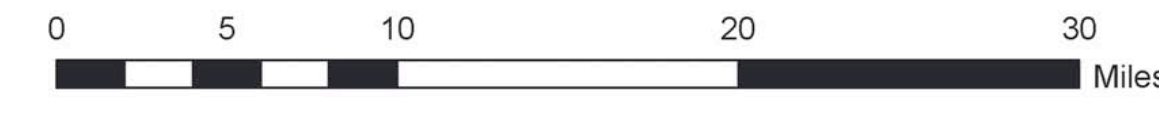


R19W R17W R15W R13W R11W R9W R7W R5W R3W R1W R1E R3E



T1N  
T1S  
T3S  
T5S  
T7S  
T9S  
T11S  
T13S



US DEPARTMENT OF THE INTERIOR  
Bureau of Land Management

Dillon Field Office  
Resource Management Plan

# Priority Treatment Areas and Vegetation Habitat Types



Dillon, Montana



- Priority Treatment Areas
- Warm Very Dry Forest
- Warm Dry Forest
- Cool Moist Forest
- Xeric Shrub
- Mesic Shrub
- Mountain Fire Sprout Shrub
- Mountain Shrub
- Grassland
- Riparian
- Aspen
- Mountain Mahogany
- Other
- Dillon Field Office Boundary

Map shows general location of habitat types referred to in the Approved Plan. Information is based on SILC imagery processed through the SIMPPLLE model. "Other" includes areas of rock, irrigated pasture, snow cover, etc.

The three priority treatment areas identified in the Approved Plan are also depicted (South Tobacco Roots, South Ruby Mountains, and Barton/Idaho Gulch).

This map is intended for display purposes. No warranty is made by the Bureau of Land Management as to the accuracy, reliability, or completeness of these data for individual or aggregate use with other data, or for purposes not intended by BLM. This map may not meet National Map Accuracy Standards. This product was developed through digital means and information may be updated without notification.

Albers Equal Area, North American Datum 1983  
First Standard Parallel: 43.50, Second Standard Parallel: 48.00  
Central Meridian: -106.00, Latitude of Origin: 42.50  
False Easting: 0.00, False Northing: 0.00

February 2006