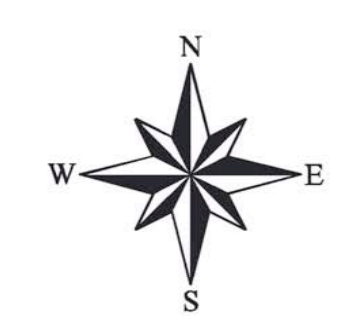
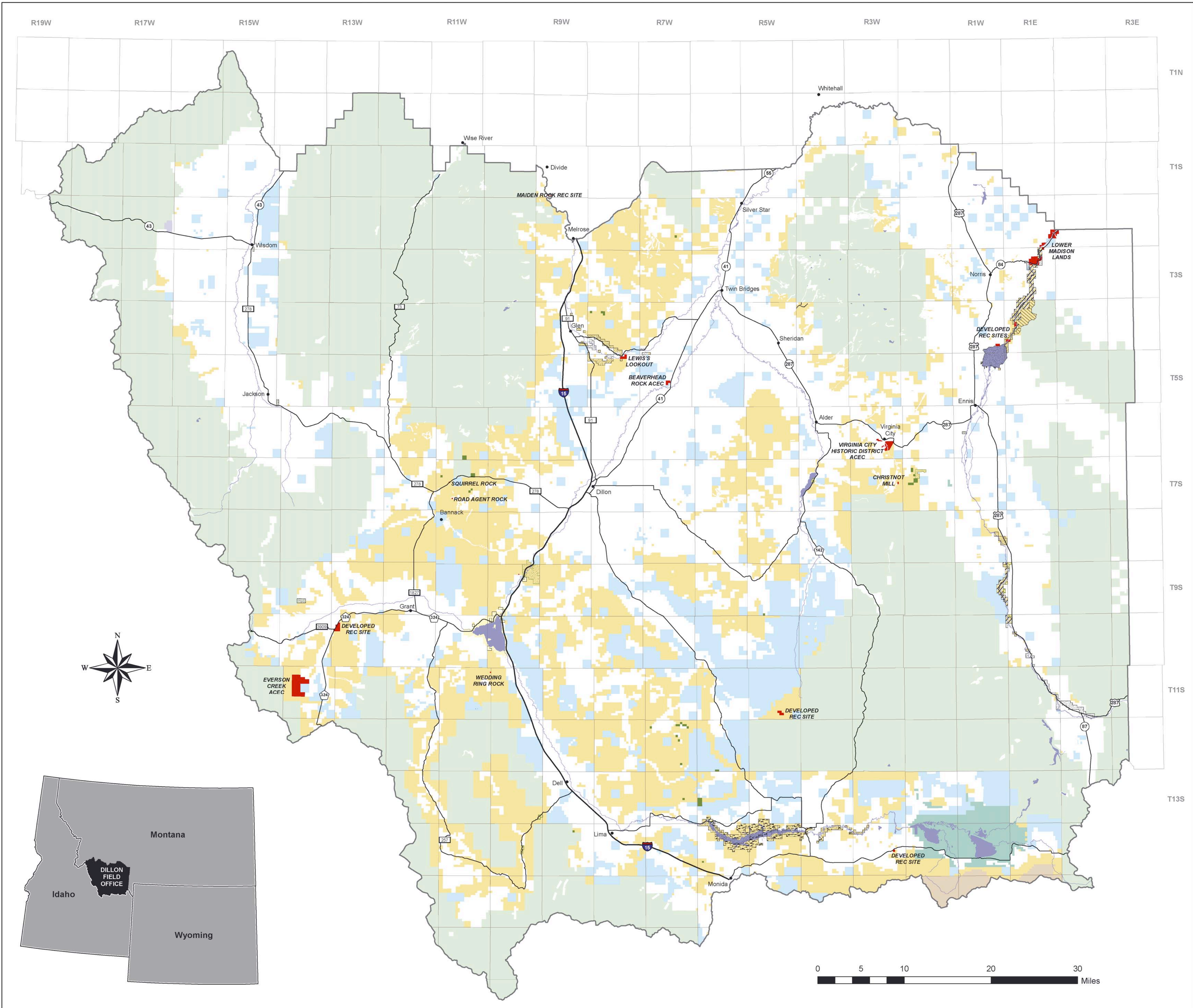


Dillon Field Office
Resource Management Plan

Existing and Proposed
Withdrawal Areas



Dillon, Montana



- Proposed Mineral Withdrawals
- Existing Withdrawals**
- Air Navigation Site
- Bear Trap Wilderness
- BLM Protective
- BLM Recreation Site
- Bureau of Reclamation
- Forest Service Administrative Site
- Power Site Reserve/FERC
- Public Water Reserve
- Reservoir Site Reserve
- Multiple Types
- Bureau of Land Management
- Bureau of Reclamation
- Fish and Wildlife Service
- Forest Service
- National Park Service
- Other Federal
- Private
- State of Montana
- Lakes
- Dillon Field Office Boundary

Map shows areas that are proposed for withdrawal from locatable mineral entry and lands that are withdrawn for certain purposes or from operation of certain laws. Some withdrawn areas may be too small to show. The following areas are proposed to be withdrawn from locatable mineral entry: Beaverhead Rock, Christnot Mill, Developed Recreation Sites (not already withdrawn), Everson Creek, Lewis's Lookout, Lower Madison lands, Road Agent Rock, Squirrel Rock, Virginia City Historic District, and Wedding Ring Rock.

This map is intended for display purposes. No warranty is made by the Bureau of Land Management as to the accuracy, reliability, or completeness of these data for individual or aggregate use with other data, or for purposes not intended by BLM. This map may not meet National Map Accuracy Standards. This product was developed through digital means and information may be updated without notification.

Albers Equal Area, North American Datum 1983
First Standard Parallel: 43.50; Second Standard Parallel: 48.00
Central Meridian: -106.00; Latitude of Origin: 42.50
False Easting: 0.00; False Northing: 0.00

