

Dillon Field Office
Resource Management Plan

Grazing Availability
and Allotments

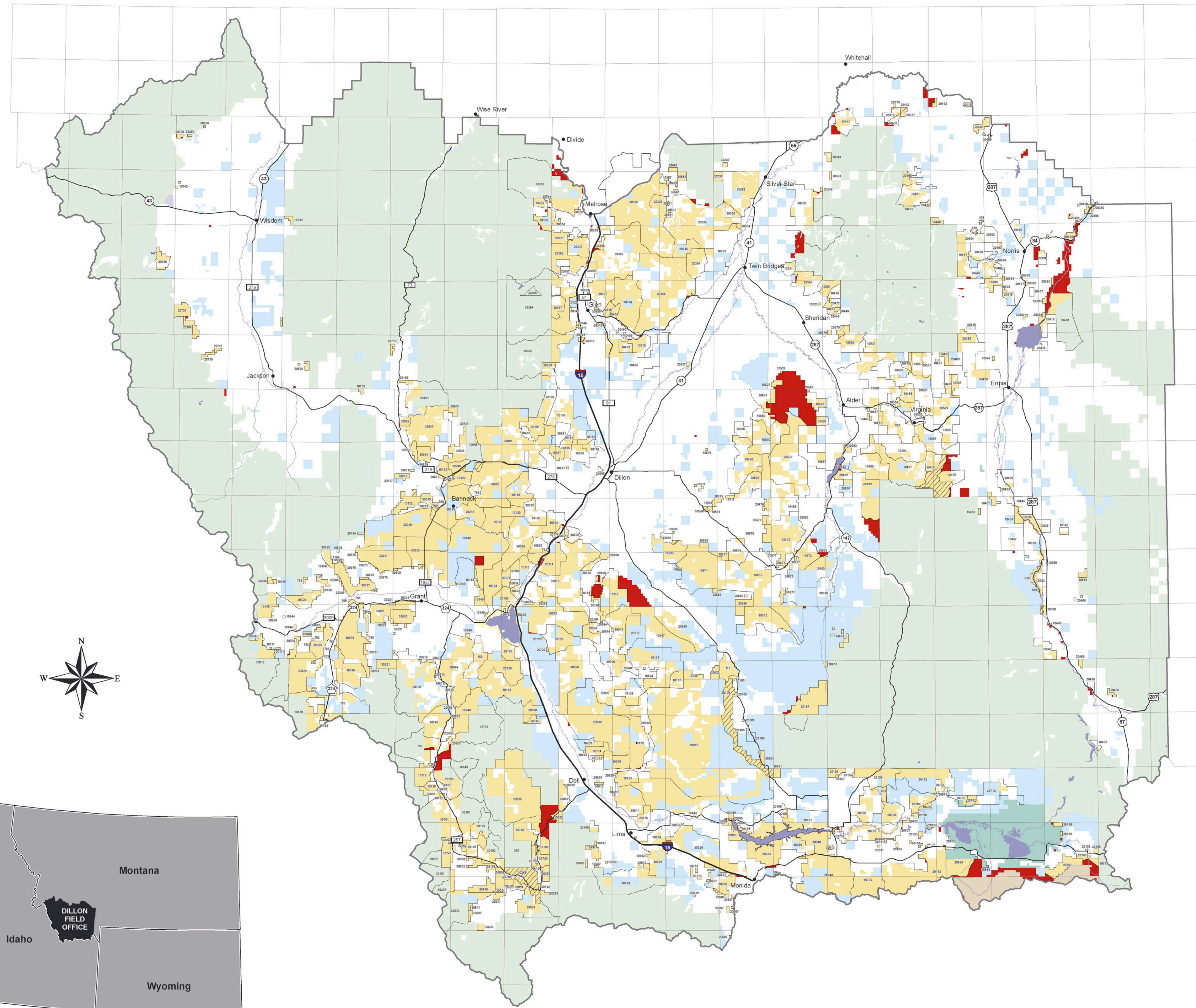


Dillon, Montana



R19W R17W R15W R13W R11W R9W R7W R5W R3W R1W R1E R3E

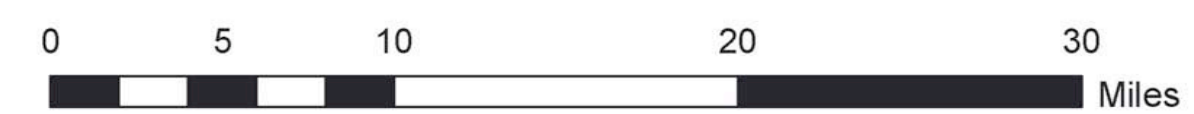
T1N
T1S
T3S
T5S
T7S
T9S
T11S
T13S



- Grazing Allotments
- Unleased
- Unavailable for Grazing
- Bureau of Land Management
- Bureau of Reclamation
- Fish and Wildlife Service
- Forest Service
- National Park Service
- Other Federal
- Private
- State of Montana
- Lakes
- Dillon Field Office Boundary

Map shows allotment boundaries as of 2005 and lands that are unavailable for livestock grazing, or currently unleased, as identified in the Dillon RMP. No term grazing permits or leases will be issued for unavailable areas, though areas could be grazed with livestock on a temporary, nonrenewable basis to meet resource objectives. Remaining BLM lands are available for grazing subject to meeting the *Western Montana Standards for Rangeland Health* and provisions in the grazing regulations. Unleased tracts will be evaluated during Watershed Assessments to determine if grazing should be authorized.

This map is intended for display purposes. No warranty is made by the Bureau of Land Management as to the accuracy, reliability, or completeness of these data for individual or aggregate use with other data, or for purposes not intended by BLM. This map may not meet National Map Accuracy Standards. This product was developed through digital means and information may be updated without notification.



Albers Equal Area, North American Datum 1983
First Standard Parallel: 43.50, Second Standard Parallel: 48.00
Central Meridian: -106.00, Latitude of Origin: 42.50
False Easting: 0.00, False Northing: 0.00