

*Mr. Hitchcock*

PUBLIC ROADS ADMINISTRATION  
FEDERAL WORKS WORK

TRAFFIC VOLUME TRENDS  
JULY 1948

On the basis of preliminary figures, motor vehicle travel on main and local roads for the country as a whole was higher during July 1948 than in any previous July.

	Rural traffic in vehicle-miles July 1948 (millions)	Percentage change from		
		1941	1943	1947
Main roads	14,581	+13.3	+126.2	+6.5
Local roads	4,941	+11.1	+ 86.1	+9.7
All Rural roads	19,522	+12.8	+114.5	+7.3

Rural travel in the geographic regions and changes from previous years are as follows:

	Rural traffic in vehicle-miles July 1948 (millions)	Percentage change from		
		1941	1943	1947
Eastern regions	6,179	+ 0.6	+135.2	+4.9
Central regions	9,678	+14.3	+102.5	+8.0
Western regions	3,665	+35.6	+116.1	+9.7

Traffic on city streets and on rural roads as a whole was heavier than in any previous July.

	Percentage change from		
	1941	1943	1947
City streets	+10.5	+ 93.2	+9.2
Rural roads	+12.8	+114.5	+7.3
All roads and streets	+11.7	+103.8	+8.2

REPORT OF THE SECRETARY OF DEFENSE  
JULY 1968

On the basis of the information available to the Secretary of Defense, the following report is submitted for the information of the President and the Congress.

The Secretary of Defense is pleased to report that the Department of Defense has achieved significant progress in the areas of defense procurement, personnel management, and research and development.

The Department of Defense has also made significant progress in the areas of defense procurement, personnel management, and research and development.

The Secretary of Defense is pleased to report that the Department of Defense has achieved significant progress in the areas of defense procurement, personnel management, and research and development.

The Department of Defense has also made significant progress in the areas of defense procurement, personnel management, and research and development.

The Secretary of Defense is pleased to report that the Department of Defense has achieved significant progress in the areas of defense procurement, personnel management, and research and development.

The Department of Defense has also made significant progress in the areas of defense procurement, personnel management, and research and development.

The Secretary of Defense is pleased to report that the Department of Defense has achieved significant progress in the areas of defense procurement, personnel management, and research and development.

The Department of Defense has also made significant progress in the areas of defense procurement, personnel management, and research and development.

Comparisons of July 1948 travel in several cities with that of July 1947 are as follows:

2 stations in Akron, Ohio	- 5.2
6 stations in Chicago, Illinois	+ 9.0
3 stations in Columbus, Ohio	+ 3.2
1 station in Concord, New Hampshire	+ 9.4
2 stations in Dayton, Ohio	+ 5.9
1 station in Denver, Colorado	+17.1
3 stations in Detroit, Michigan	+25.4
8 stations in Washington, D. C.	+ 4.0
1 station in Fort Morgan, Colorado	+42.8
1 station in Grand Junction, Colorado	+11.9
1 station in Harpers Ferry, West Virginia	- 1.7
1 station in Loveland, Colorado	+18.3
9 stations in Milwaukee, Wisconsin	+ 8.8
7 stations in St. Louis, Missouri	- 1.3
1 station in Salt Lake City, Utah	+ 3.1
1 station in Santa Fe, New Mexico	+10.8
6 urban toll facilities	+ 5.4

H. S. Fairbank, Deputy Commissioner  
Public Roads Administration

Attachments

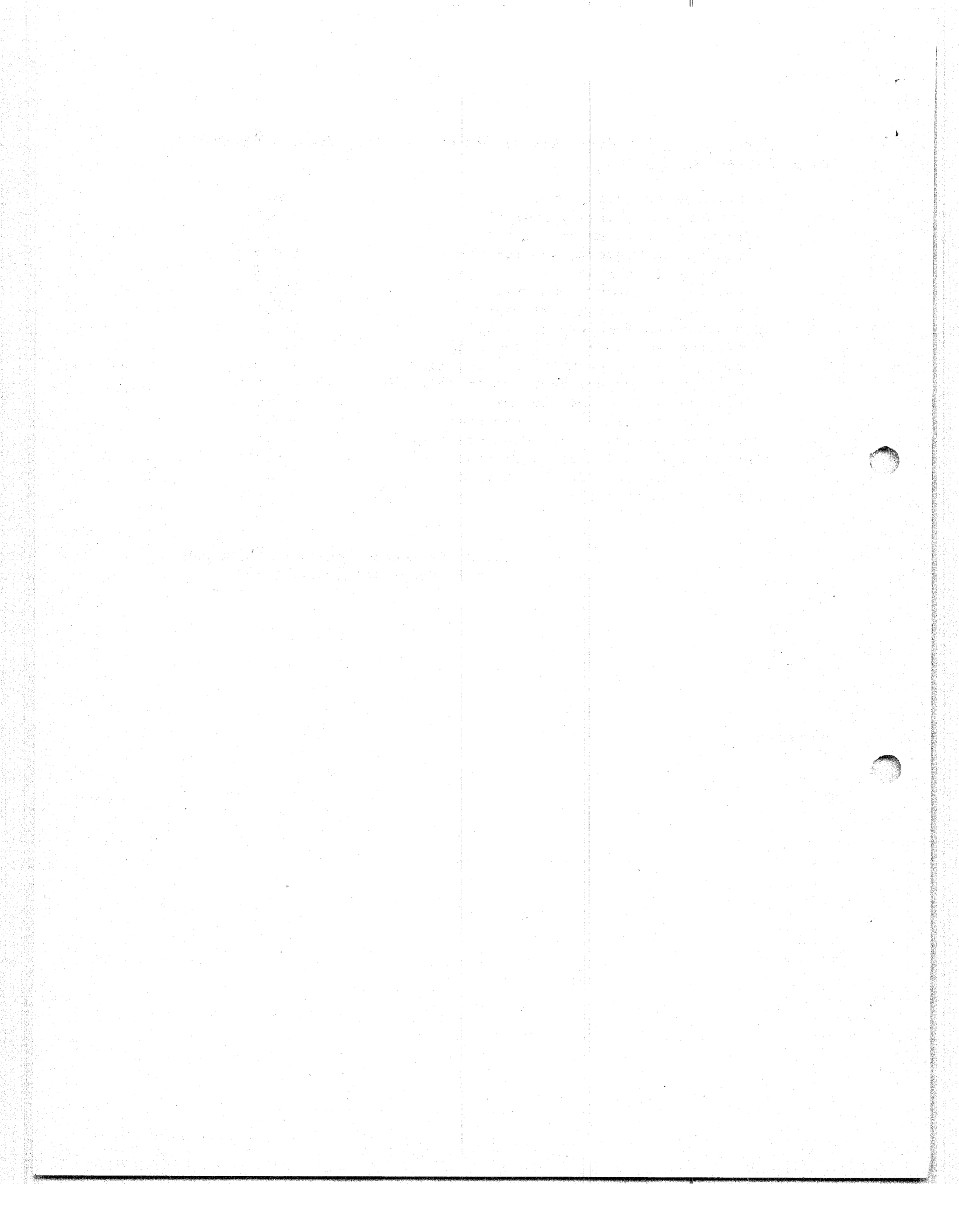


TABLE 1.--PRELIMINARY SUMMARY OF AUTOMATIC TRAFFIC RECORDER DATA FOR  
JULY 1948 INCLUDING 665 STATIONS IN 46 STATES

Type of highway and State	Number of stations	Traffic volume percentage change from July 1947	Type of highway and State	Number of stations	Traffic volume percentage change from July 1947
<i>STATE HIGHWAYS</i>			<i>LOCAL HIGHWAYS</i>		
Alabama	7	+ 0.7	Alabama	2	+ 4.5
Arizona	5	+17.0	Connecticut	2	+ 6.5
Arkansas	19	+ 5.4	Georgia	3	+ 7.0
California	7	+ 6.6	Indiana	1	+18.4
Colorado	22	+12.7	Iowa	8	+11.5
Connecticut	16	+ 6.7	Maryland	1	+11.0
Delaware	4	+ 7.8	Michigan	2	+20.2
Florida	17	+ 5.6	Missouri	2	- 2.2
Georgia	7	- 1.8	Montana	2	+ 6.0
Idaho	8	+ 4.0	Nebraska	1	- 9.0
Illinois	5	+14.6	North Dakota	2	-16.6
Indiana	21	+10.5	Ohio	2	+21.7
Iowa	26	+ 9.8	Rhode Island	1	+ 1.5
Kansas	11	+ 8.1	Wisconsin	1	+21.0
Kentucky	10	+13.9			
Louisiana	8	+13.8			
Maine	10	+ 8.0			
Maryland	17	+10.6			
Massachusetts	9	+ 7.8			
Michigan	26	+ 5.9			
Minnesota	26	+ 5.0			
Mississippi	10	+ 1.6			
Missouri	25	+ 8.9			
Montana	12	+ 5.3			
Nebraska	10	+ 8.6			
Nevada	16	+ 4.0			
New Hampshire	11	+ 7.7			
New Jersey	4	+ 8.9			
New Mexico	16	+11.0			
New York	1	+ 4.6			
North Carolina	20	+ 7.6			
North Dakota	10	+18.2			
Ohio	21	+ 1.9			
Oklahoma	20	+ 8.3			
Oregon	-----	-----			
Pennsylvania	28	+ 0.9			
Rhode Island	1	+22.6			
South Carolina	5	- 2.9			
South Dakota	-----	-----			
Tennessee	7	+16.4			
Texas	83	+ 6.6			
Utah	11	+12.4			
Vermont	5	+ 7.0			
Virginia	2	+15.2			
Washington	10	+10.4			
West Virginia	11	+17.3			
Wisconsin	9	+11.9			
Wyoming	6	+ 7.0			
<i>TOTAL - 46 STATES</i>	635	+ 6.5	<i>TOTAL - 14 STATES</i>	30	+ 9.7
			<i>ALL HIGHWAYS</i>		
			<i>46 STATES</i>	665	+ 7.3
			<i>3 EASTERN REGIONS</i>	175	+ 4.9
			<i>4 CENTRAL REGIONS</i>	375	+ 8.0
			<i>2 WESTERN REGIONS</i>	115	+ 9.7

THE UNIVERSITY OF CHICAGO  
DEPARTMENT OF CHEMISTRY

Run	Time	Temp	Pressure	Flow	Detector	Response
1	10.0	100	1.0	1.0	1.0	1.0
2	10.5	100	1.0	1.0	1.0	1.0
3	11.0	100	1.0	1.0	1.0	1.0
4	11.5	100	1.0	1.0	1.0	1.0
5	12.0	100	1.0	1.0	1.0	1.0
6	12.5	100	1.0	1.0	1.0	1.0
7	13.0	100	1.0	1.0	1.0	1.0
8	13.5	100	1.0	1.0	1.0	1.0
9	14.0	100	1.0	1.0	1.0	1.0
10	14.5	100	1.0	1.0	1.0	1.0
11	15.0	100	1.0	1.0	1.0	1.0
12	15.5	100	1.0	1.0	1.0	1.0
13	16.0	100	1.0	1.0	1.0	1.0
14	16.5	100	1.0	1.0	1.0	1.0
15	17.0	100	1.0	1.0	1.0	1.0
16	17.5	100	1.0	1.0	1.0	1.0
17	18.0	100	1.0	1.0	1.0	1.0
18	18.5	100	1.0	1.0	1.0	1.0
19	19.0	100	1.0	1.0	1.0	1.0
20	19.5	100	1.0	1.0	1.0	1.0
21	20.0	100	1.0	1.0	1.0	1.0
22	20.5	100	1.0	1.0	1.0	1.0
23	21.0	100	1.0	1.0	1.0	1.0
24	21.5	100	1.0	1.0	1.0	1.0
25	22.0	100	1.0	1.0	1.0	1.0
26	22.5	100	1.0	1.0	1.0	1.0
27	23.0	100	1.0	1.0	1.0	1.0
28	23.5	100	1.0	1.0	1.0	1.0
29	24.0	100	1.0	1.0	1.0	1.0
30	24.5	100	1.0	1.0	1.0	1.0
31	25.0	100	1.0	1.0	1.0	1.0
32	25.5	100	1.0	1.0	1.0	1.0
33	26.0	100	1.0	1.0	1.0	1.0
34	26.5	100	1.0	1.0	1.0	1.0
35	27.0	100	1.0	1.0	1.0	1.0
36	27.5	100	1.0	1.0	1.0	1.0
37	28.0	100	1.0	1.0	1.0	1.0
38	28.5	100	1.0	1.0	1.0	1.0
39	29.0	100	1.0	1.0	1.0	1.0
40	29.5	100	1.0	1.0	1.0	1.0
41	30.0	100	1.0	1.0	1.0	1.0
42	30.5	100	1.0	1.0	1.0	1.0
43	31.0	100	1.0	1.0	1.0	1.0
44	31.5	100	1.0	1.0	1.0	1.0
45	32.0	100	1.0	1.0	1.0	1.0
46	32.5	100	1.0	1.0	1.0	1.0
47	33.0	100	1.0	1.0	1.0	1.0
48	33.5	100	1.0	1.0	1.0	1.0
49	34.0	100	1.0	1.0	1.0	1.0
50	34.5	100	1.0	1.0	1.0	1.0
51	35.0	100	1.0	1.0	1.0	1.0
52	35.5	100	1.0	1.0	1.0	1.0
53	36.0	100	1.0	1.0	1.0	1.0
54	36.5	100	1.0	1.0	1.0	1.0
55	37.0	100	1.0	1.0	1.0	1.0
56	37.5	100	1.0	1.0	1.0	1.0
57	38.0	100	1.0	1.0	1.0	1.0
58	38.5	100	1.0	1.0	1.0	1.0
59	39.0	100	1.0	1.0	1.0	1.0
60	39.5	100	1.0	1.0	1.0	1.0
61	40.0	100	1.0	1.0	1.0	1.0
62	40.5	100	1.0	1.0	1.0	1.0
63	41.0	100	1.0	1.0	1.0	1.0
64	41.5	100	1.0	1.0	1.0	1.0
65	42.0	100	1.0	1.0	1.0	1.0
66	42.5	100	1.0	1.0	1.0	1.0
67	43.0	100	1.0	1.0	1.0	1.0
68	43.5	100	1.0	1.0	1.0	1.0
69	44.0	100	1.0	1.0	1.0	1.0
70	44.5	100	1.0	1.0	1.0	1.0
71	45.0	100	1.0	1.0	1.0	1.0
72	45.5	100	1.0	1.0	1.0	1.0
73	46.0	100	1.0	1.0	1.0	1.0
74	46.5	100	1.0	1.0	1.0	1.0
75	47.0	100	1.0	1.0	1.0	1.0
76	47.5	100	1.0	1.0	1.0	1.0
77	48.0	100	1.0	1.0	1.0	1.0
78	48.5	100	1.0	1.0	1.0	1.0
79	49.0	100	1.0	1.0	1.0	1.0
80	49.5	100	1.0	1.0	1.0	1.0
81	50.0	100	1.0	1.0	1.0	1.0
82	50.5	100	1.0	1.0	1.0	1.0
83	51.0	100	1.0	1.0	1.0	1.0
84	51.5	100	1.0	1.0	1.0	1.0
85	52.0	100	1.0	1.0	1.0	1.0
86	52.5	100	1.0	1.0	1.0	1.0
87	53.0	100	1.0	1.0	1.0	1.0
88	53.5	100	1.0	1.0	1.0	1.0
89	54.0	100	1.0	1.0	1.0	1.0
90	54.5	100	1.0	1.0	1.0	1.0
91	55.0	100	1.0	1.0	1.0	1.0
92	55.5	100	1.0	1.0	1.0	1.0
93	56.0	100	1.0	1.0	1.0	1.0
94	56.5	100	1.0	1.0	1.0	1.0
95	57.0	100	1.0	1.0	1.0	1.0
96	57.5	100	1.0	1.0	1.0	1.0
97	58.0	100	1.0	1.0	1.0	1.0
98	58.5	100	1.0	1.0	1.0	1.0
99	59.0	100	1.0	1.0	1.0	1.0
100	59.5	100	1.0	1.0	1.0	1.0

TABLE 2.--REVISED SUMMARY OF AUTOMATIC TRAFFIC RECORDER DATA FOR  
JUNE 1948 INCLUDING 688 STATIONS IN 48 STATES<sup>1</sup>

Region and State	Number of stations	Traffic volume percentage change from June 1947	Region and State	Number of stations	Traffic volume percentage change from June 1947
<b>NEW ENGLAND</b>			<b>EAST SOUTH CENTRAL</b>		
Connecticut	19	+ 8.6	Alabama	9	+ 5.9
Maine	10	+ 0.8	Kentucky	11	+11.4
Massachusetts	8	+ 4.6	Mississippi	10	+ 6.2
New Hampshire	13	+ 6.9	Tennessee	8	+19.7
Rhode Island	2	+ 0.1	Subtotal	38	+10.5
Vermont	12	+ 3.1	<b>WEST SOUTH CENTRAL</b>		
Subtotal	64	+ 6.0	Arkansas	20	+ 9.9
<b>MIDDLE ATLANTIC</b>			Louisiana	8	+16.3
New Jersey	4	- 3.7	Oklahoma	20	+ 2.5
New York	1	+ 2.2	Texas	84	+ 7.6
Pennsylvania	28	+ 3.7	Subtotal	132	+ 7.7
Subtotal	33	+ 1.6	<b>MOUNTAIN</b>		
<b>SOUTH ATLANTIC</b>			Arizona	5	+ 6.6
Delaware	4	0.0	Colorado	22	+11.4
Maryland	18	+ 7.6	Idaho	8	+ 5.7
Virginia	2	+11.3	Montana	14	+ 4.9
West Virginia	11	+14.2	Nevada	16	+ 1.1
Subtotal north portion	35	+ 8.0	New Mexico	16	+11.7
Florida	17	+ 3.2	Utah	11	+ 6.2
Georgia	10	+ 4.4	Wyoming	6	+ 8.5
North Carolina	19	+11.8	Subtotal	98	+ 7.5
South Carolina	5	- 9.4	<b>PACIFIC</b>		
Subtotal south portion	51	+ 5.6	California	5	+ 0.5
Subtotal region	86	+ 6.9	Oregon	5	- 0.6
<b>EAST NORTH CENTRAL</b>			Washington	10	+ 0.3
Illinois	6	+19.2	Subtotal	20	+ 0.2
Indiana	22	+10.7	<b>TOTAL ALL STATES</b>		
Michigan	28	+ 0.7	688 + 7.1		
Ohio	18	+10.4	<b>STATE HIGHWAYS</b>		
Wisconsin	10	+ 7.3	657 + 6.8		
Subtotal	84	+ 6.4	<b>LOCAL HIGHWAYS</b>		
<b>WEST NORTH CENTRAL</b>			31 + 8.0		
Iowa	34	+16.9	<b>3 EASTERN REGIONS</b>		
Kansas	13	+ 6.5	183 + 4.4		
Minnesota	26	+ 6.0	<b>4 CENTRAL REGIONS</b>		
Missouri	27	+ 7.6	387 + 9.1		
Nebraska	12	+ 8.1	<b>2 WESTERN REGIONS</b>		
North Dakota	11	+14.2	118 + 5.8		
South Dakota	10	+ 7.1			
Subtotal	133	+ 9.0			

<sup>1</sup> Combined State and local highways.

... ..

... ..

... ..

... ..

... ..



TABLE 3.--NUMBER OF VEHICLES, CLASSIFIED BY TYPES, USING TOLL FACILITIES  
IN JULY 1948 COMPARED WITH THOSE IN JULY 1947

Facilities	1948			Percentage change from 1947		
	Total	Passenger cars <sup>1</sup>	Trucks and busses	Total	Pas-senger cars <sup>1</sup>	Trucks and busses
<b>EASTERN REGIONS</b>						
3 in the New England States	882,397	806,434	75,963	+18.7	+18.5	+20.7
15 in the Middle Atlantic States	15,791,482	14,073,195	1,718,287	+12.8	+13.3	+ 9.2
Pennsylvania Turnpike <sup>2</sup>	428,177	365,698	62,479	+17.7	+13.9	+46.1
5 in the South Atlantic States	632,051	526,787	105,264	+19.2	+20.0	+15.6
<b>TOTAL - 24 facilities</b>	<b>17,734,107</b>	<b>15,772,114</b>	<b>1,961,993</b>	<b>+13.4</b>	<b>+13.8</b>	<b>+10.8</b>
<b>CENTRAL REGIONS</b>						
3 on the Great Lakes Canadian border <sup>3</sup>	945,705	925,334	20,371	+21.7	+22.4	- 2.9
1 in the Great Lakes Region	104,290	100,628	3,662	+ 6.3	+ 6.0	+15.7
Subtotal - 4 facilities	1,049,995	1,025,962	24,033	+20.0	+20.5	- 0.4
4 on the Ohio River	459,987	403,913	56,074	+16.4	+17.0	+12.4
1 in the Kentucky	14,475	10,763	3,712	- 3.1	- 3.8	- 0.7
Subtotal - 5 facilities	474,462	414,676	59,786	+15.7	+16.3	+11.5
7 on the Mississippi and St. Croix Rivers St. Louis and North	906,398	798,045	108,353	+13.7	+12.9	+19.8
3 on the Miss. River south of St. Louis	146,126	115,967	30,159	+18.2	+15.6	+29.3
Subtotal - 10 facilities	1,052,524	914,012	138,512	+14.3	+13.2	+21.8
4 on the Missouri River	219,572	184,650	34,922	+10.1	+11.4	+ 3.8
3 in the West South Central States	31,167	29,536	1,631	+ 8.5	+ 9.9	-11.8
Subtotal - 7 facilities	250,739	214,186	36,553	+ 9.9	+11.2	+ 3.0
<b>TOTAL - 26 facilities</b>	<b>2,827,720</b>	<b>2,568,836</b>	<b>258,884</b>	<b>+16.2</b>	<b>+16.4</b>	<b>+14.0</b>
<b>WESTERN REGIONS</b>						
1 in California	2,227,159	2,018,942	208,217	+ 1.8	+ 1.6	+ 3.9
3 in the Ore-Washington Area	477,009	424,027	52,982	+ 9.2	+ 8.3	+17.1
<b>TOTAL - 4 facilities</b>	<b>2,704,168</b>	<b>2,442,969</b>	<b>261,199</b>	<b>+ 3.0</b>	<b>+ 2.7</b>	<b>+ 6.3</b>
<b>UNITED STATES</b>						
<b>TOTAL - 54 facilities</b>	<b>23,265,995</b>	<b>20,783,919</b>	<b>2,482,076</b>	<b>+12.4</b>	<b>+12.7</b>	<b>+10.7</b>
<sup>1</sup> Non-revenue vehicles included in report and treated as passenger cars unless otherwise specified. <sup>2</sup> Number of vehicles, those using any portion of the facility. <sup>3</sup> One of these facilities is in Western New York and therefore is related to similar facilities in the Central States.						

[The page contains extremely faint, illegible text, likely bleed-through from the reverse side of the document. The text is arranged in several paragraphs across the page.]

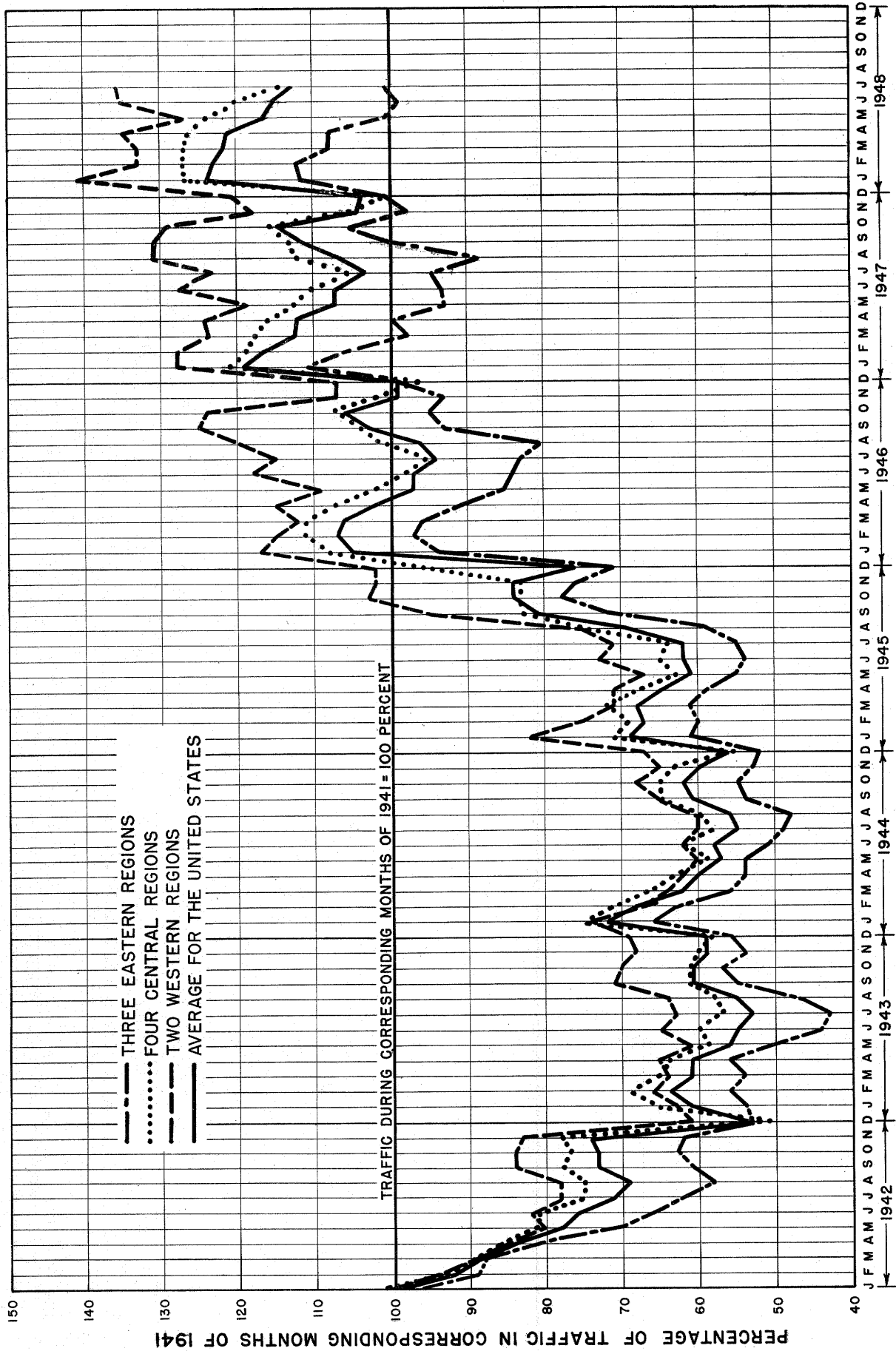


FIGURE 1 - PERCENTAGE RELATIONS OF RURAL TRAFFIC BY MONTHS IN 1942 TO 1948 WITH THAT IN CORRESPONDING MONTHS OF 1941



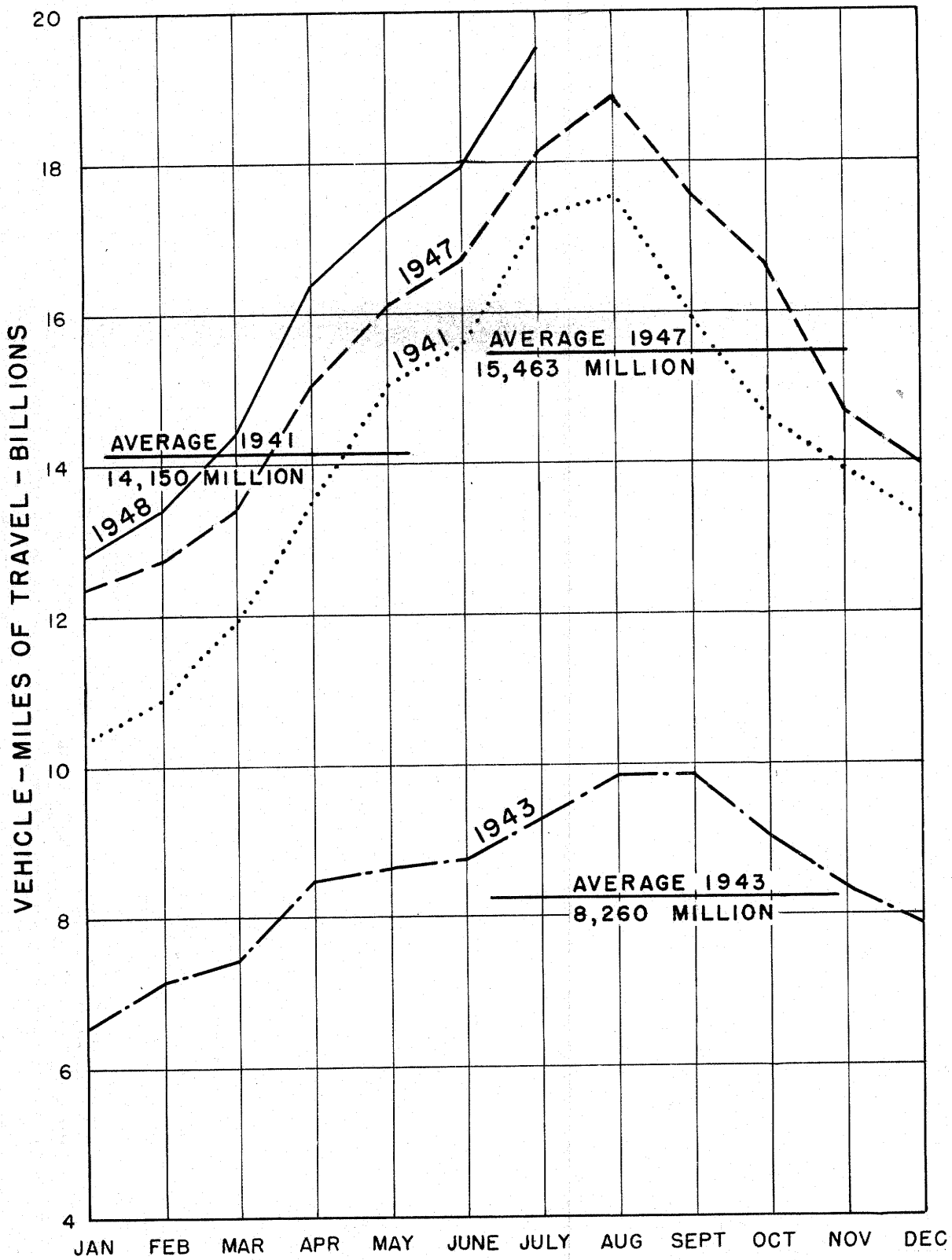
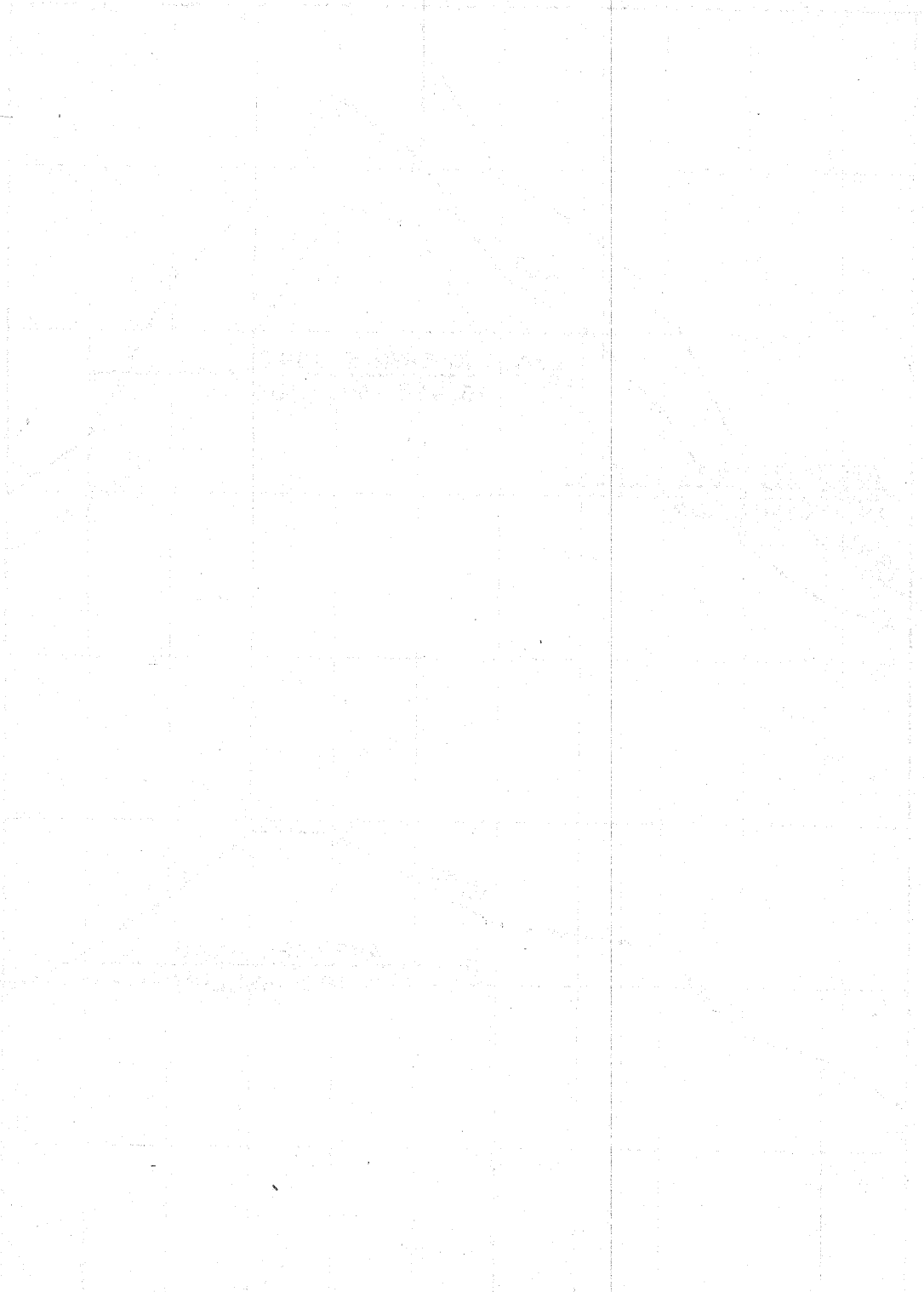


FIGURE 2 - VEHICLE - MILES OF TRAVEL ON ALL RURAL ROADS IN 1941, 1943, 1947 AND 1948



THE UNIVERSITY OF TEXAS AT AUSTIN  
 LIBRARY, 102, 104, 106, 108, 110, 112, 114, 116, 118, 120, 122, 124, 126, 128, 130, 132, 134, 136, 138, 140, 142, 144, 146, 148, 150, 152, 154, 156, 158, 160, 162, 164, 166, 168, 170, 172, 174, 176, 178, 180, 182, 184, 186, 188, 190, 192, 194, 196, 198, 200