

Mr. S. S. Hitchcock-1

PUBLIC ROADS ADMINISTRATION
FEDERAL WORKS AGENCY

INFORMATIONAL MEMORANDUM NO. 70

DATE: AUGUST 31, 1944

SUBJECT: TRAFFIC VOLUME TRENDS

Preliminary data for July 1944 indicate that traffic on rural roads is slightly higher than in the corresponding month of 1943. Traffic in the eastern portion of the country increased 18.5 percent, while that in the central portion decreased 2.8 percent, and that in the western portion decreased 3.4 percent. In interpreting these figures, it should be borne in mind that during July 1943 (as was the case in May and June) a pleasure-driving ban was in effect in the northeast, and the increase shown for July 1944 traffic is due in large part to the fact that no similar ban was in effect during July of this year.

H. S. FAIRBANK, DEPUTY COMMISSIONER,
PUBLIC ROADS ADMINISTRATION.

Attachments.

STATE OF TEXAS
COUNTY OF [illegible]

Know all men by these presents, that [illegible]

of the County of [illegible] State of Texas, for and in consideration of the sum of [illegible]

to [illegible] the sum of [illegible]

to [illegible] the sum of [illegible]

to [illegible] the sum of [illegible]

to [illegible] the sum of [illegible]

to [illegible] the sum of [illegible]

to [illegible] the sum of [illegible]

to [illegible] the sum of [illegible]

to [illegible] the sum of [illegible]

to [illegible] the sum of [illegible]

to [illegible] the sum of [illegible]

to [illegible] the sum of [illegible]

to [illegible] the sum of [illegible]

to [illegible] the sum of [illegible]

to [illegible] the sum of [illegible]

to [illegible] the sum of [illegible]

TABLE 1.--PRELIMINARY SUMMARY OF AUTOMATIC TRAFFIC RECORDER DATA FOR JULY 1944 INCLUDING 576 STATIONS IN 42 STATES¹

Type of highway and State	Number of stations	Percentage change from July, 1943	Type of highway and State	Number of stations	Percentage change from July 1943
<i>STATE HIGHWAYS</i>			<i>STATE HIGHWAYS (Continued)</i>		
Alabama	7	- 3.6	Virginia	5	+11.5
Arizona	5	- 3.5	Washington	9	- 9.4
Arkansas	20	- 3.9	West Virginia	9	+ 5.0
California	8	- 2.9	Wisconsin	9	+ 6.4
Colorado	6	+ 1.5	Wyoming	4	+22.9
Connecticut	17	+34.9	<i>TOTAL - 42 STATES</i>		
Delaware	4	+32.7	541		+ 2.1
Idaho ²	6	+12.3	<i>LOCAL HIGHWAYS</i>		
Illinois	3	- 5.6	Alabama ²	2	+37.8
Indiana	21	- 3.5	Connecticut	3	+28.4
Iowa	26	- 7.1	Indiana	2	- 4.0
Kansas	9	+ 5.0	Iowa	9	+ 1.9
Kentucky	11	- 2.2	Maryland	1	+15.9
Louisiana	7	-11.5	Massachusetts	1	-55.2
Maine	10	+20.2	Michigan	2	+20.6
Maryland	16	+33.0	Missouri	2	+ 7.7
Massachusetts	8	+39.9	Montana	2	- 9.4
Michigan	26	- 3.0	Nebraska	1	+77.5
Mississippi	10	+ 1.1	North Dakota	2	+ 8.0
Missouri	24	- 8.2	Ohio	2	+ 3.9
Montana	12	+ 6.7	Oregon	1	+ 7.0
Nebraska	11	- 2.3	Rhode Island	1	- 1.3
Nevada ²	12	-24.8	Tennessee	2	- 5.0
New Mexico	13	+ 8.7	Wisconsin	2	- 6.6
North Carolina	20	+ 3.2	<i>TOTAL - 16 STATES</i>		
North Dakota	10	+11.0	35		+ 7.1
Ohio	23	- 1.0	<i>ALL HIGHWAYS</i>		
Oklahoma	20	- 8.1	42 STATES	576	+ 3.5
Oregon	3	+ 0.8	<i>3 EASTERN REGIONS</i>		
Pennsylvania	30	+18.8	139		+18.5
Rhode Island	3	+28.5	<i>4 CENTRAL REGIONS</i>		
South Carolina	5	+ 4.8	348		- 2.8
South Dakota	10	- 1.0	<i>2 WESTERN REGIONS</i>		
Tennessee	4	-13.3	89		- 3.4
Texas	71	- 0.7			
Utah	8	- 2.5			
Vermont	6	+30.8			

¹ Includes all States except Florida, Georgia, Minnesota, New Hampshire, New Jersey, and New York.

² Abnormal conditions in 1943 or 1944 affected 3 counts in the following States: Alabama, excluding station 2, the increase for local highways is 4.6 percent; Idaho, excluding station 7, there is a decrease of 3.5 percent; Nevada, excluding station 110, there is an increase of 1.4 percent.

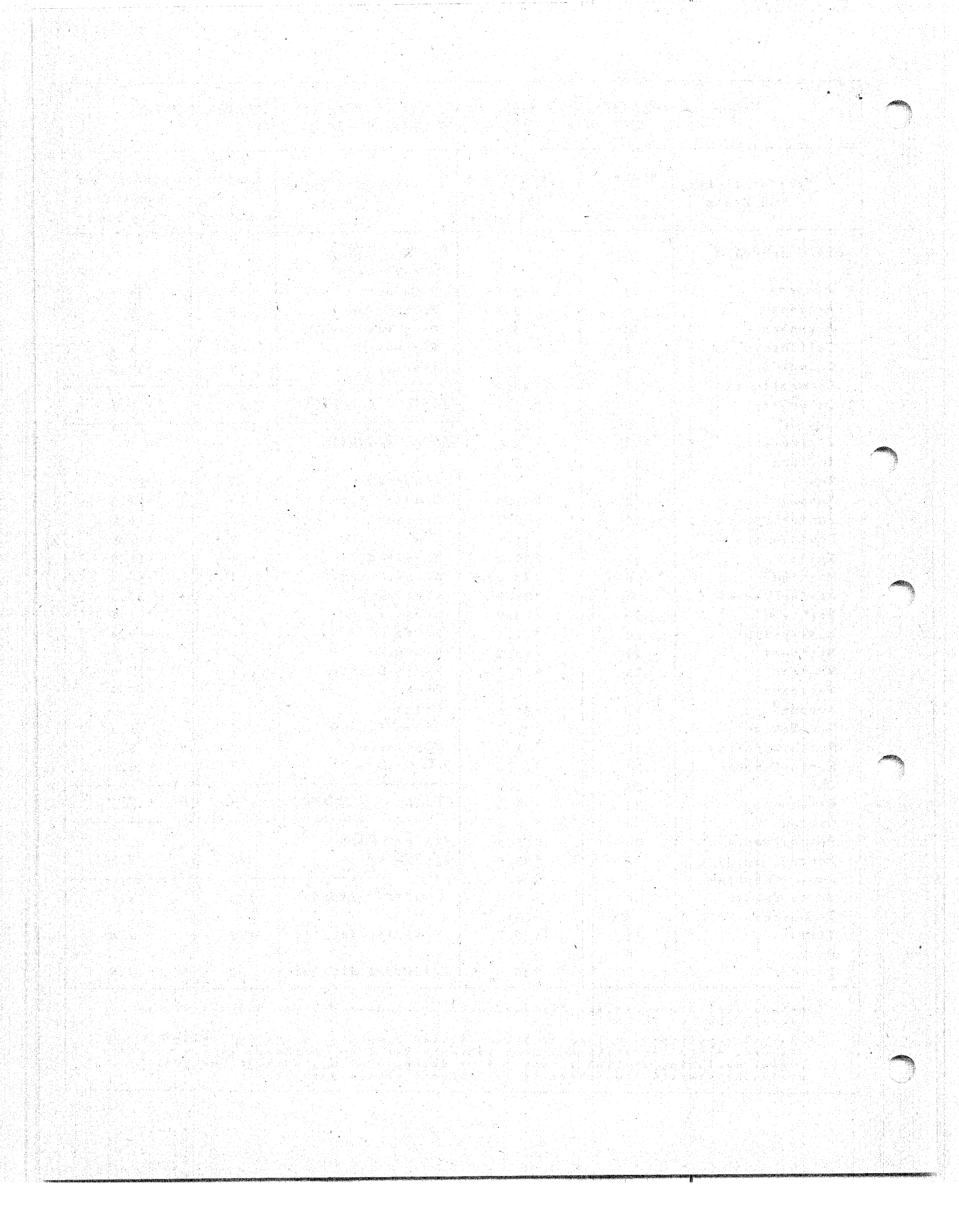


TABLE 2.--REVISED SUMMARY OF AUTOMATIC TRAFFIC RECORDER DATA FOR
JUNE 1944 INCLUDING 621 STATIONS IN 46 STATES¹

Region and State	Number of stations	Percentage change from June 1943	Region and State	Number of stations	Percentage change from June 1943
<i>NEW ENGLAND</i>			<i>EAST SOUTH CENTRAL</i>		
Connecticut	20	+35.3	Alabama ²	8	- 1.5
Maine	10	+21.0	Kentucky	9	+ 0.4
Massachusetts	9	+32.8	Mississippi	10	+ 5.4
New Hampshire	20	+28.2	Tennessee	5	-14.4
Rhode Island	4	+20.0	Subtotal	32	- 1.2
Vermont	7	+30.2	<i>WEST SOUTH CENTRAL</i>		
Subtotal	70	+31.1	Arkansas	20	- 6.5
<i>MIDDLE ATLANTIC</i>			Louisiana	8	- 3.9
New York	9	+38.8	Oklahoma	20	- 6.4
Pennsylvania	30	+26.5	Texas	70	+ 0.4
Subtotal	39	+30.5	Subtotal	118	- 1.9
<i>SOUTH ATLANTIC</i>			<i>MOUNTAIN</i>		
Delaware	4	+35.6	Arizona	5	+ 2.5
Maryland	17	+36.2	Colorado	6	- 3.6
Virginia	5	+15.7	Idaho	6	- 5.7
West Virginia	10	- 3.8	Montana	14	+ 2.8
Subtotal north portion	36	+24.2	Nevada ²	12	-27.0
Florida	16	+10.1	New Mexico	13	+ 1.0
Georgia	11	+ 3.9	Utah	6	- 4.8
North Carolina	19	+ 1.9	Wyoming	4	-10.2
South Carolina	5	+ 5.0	Subtotal	66	- 5.4
Subtotal south portion	51	+ 5.1	<i>PACIFIC</i>		
Subtotal region	87	+13.5	California	9	- 2.7
<i>EAST NORTH CENTRAL</i>			Oregon	4	+ 2.3
Illinois	4	- 2.8	Washington	9	-11.9
Indiana	23	- 6.6	Subtotal	22	- 5.8
Michigan	28	- 8.5	<i>TOTAL ALL STATES¹</i>		
Ohio	18	- 3.0	621 + 3.8		
Wisconsin	11	+ 2.0	<i>STATE HIGHWAYS¹</i>		
Subtotal	84	- 5.5	584 + 2.1		
<i>WEST NORTH CENTRAL</i>			<i>LOCAL HIGHWAYS¹</i>		
Iowa	35	-11.3	37 + 8.2		
Kansas	9	+ 6.4	<i>3 EASTERN REGIONS</i>		
Missouri	27	- 6.8	196 +22.9		
Nebraska	12	- 6.6	<i>4 CENTRAL REGIONS</i>		
North Dakota	10	- 2.7	337 - 4.1		
South Dakota	10	+ 3.2	<i>2 WESTERN REGIONS</i>		
Subtotal	103	- 5.9	88 - 5.7		

¹ Includes all States except the following: Minnesota and New Jersey.

² Abnormal conditions in 1943 or 1944 affected 2 counts in the following States: Alabama, excluding local station 3, the decrease for all highways is 4.1 percent; Nevada, excluding station 110, there is an increase of 2.1 percent.

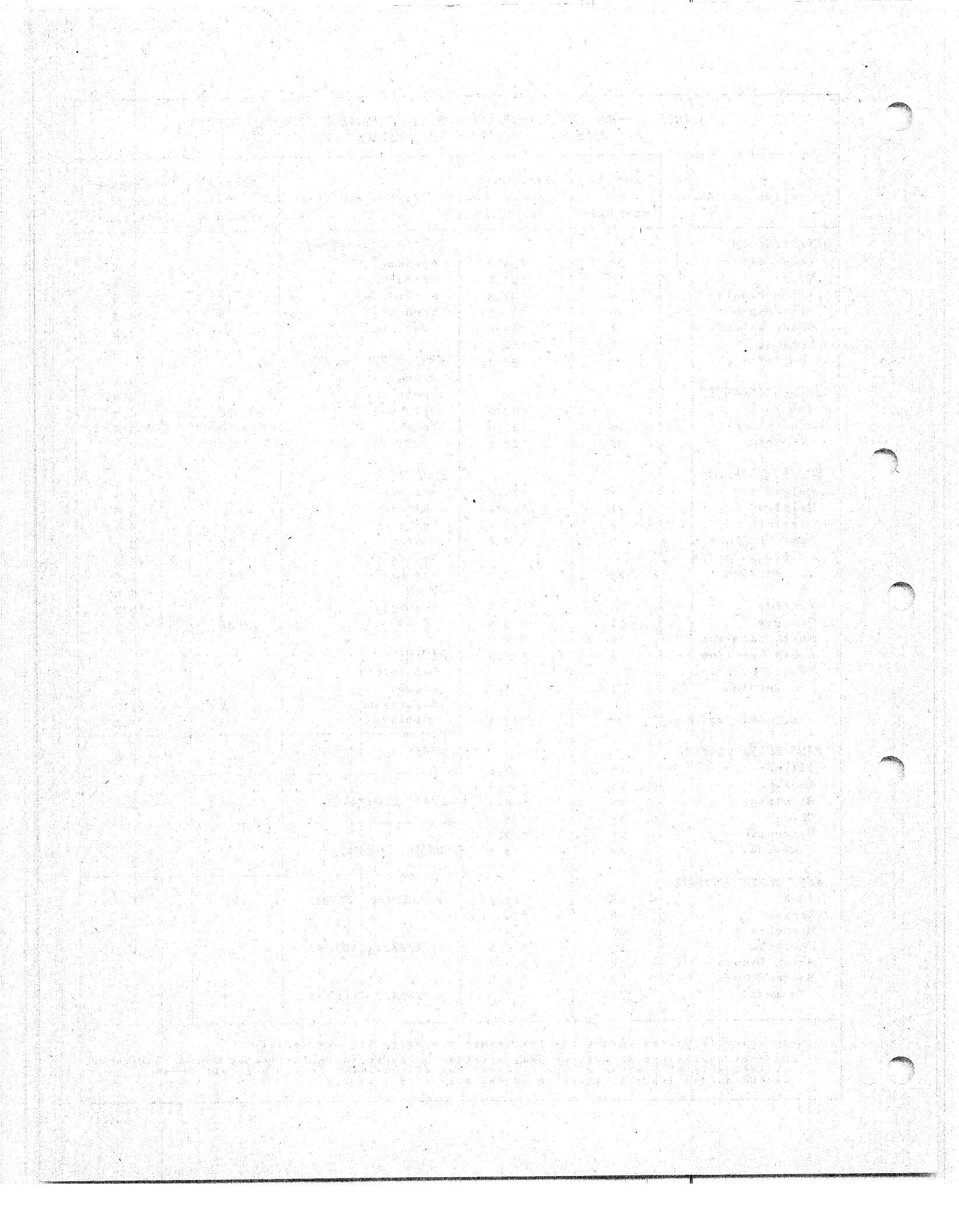


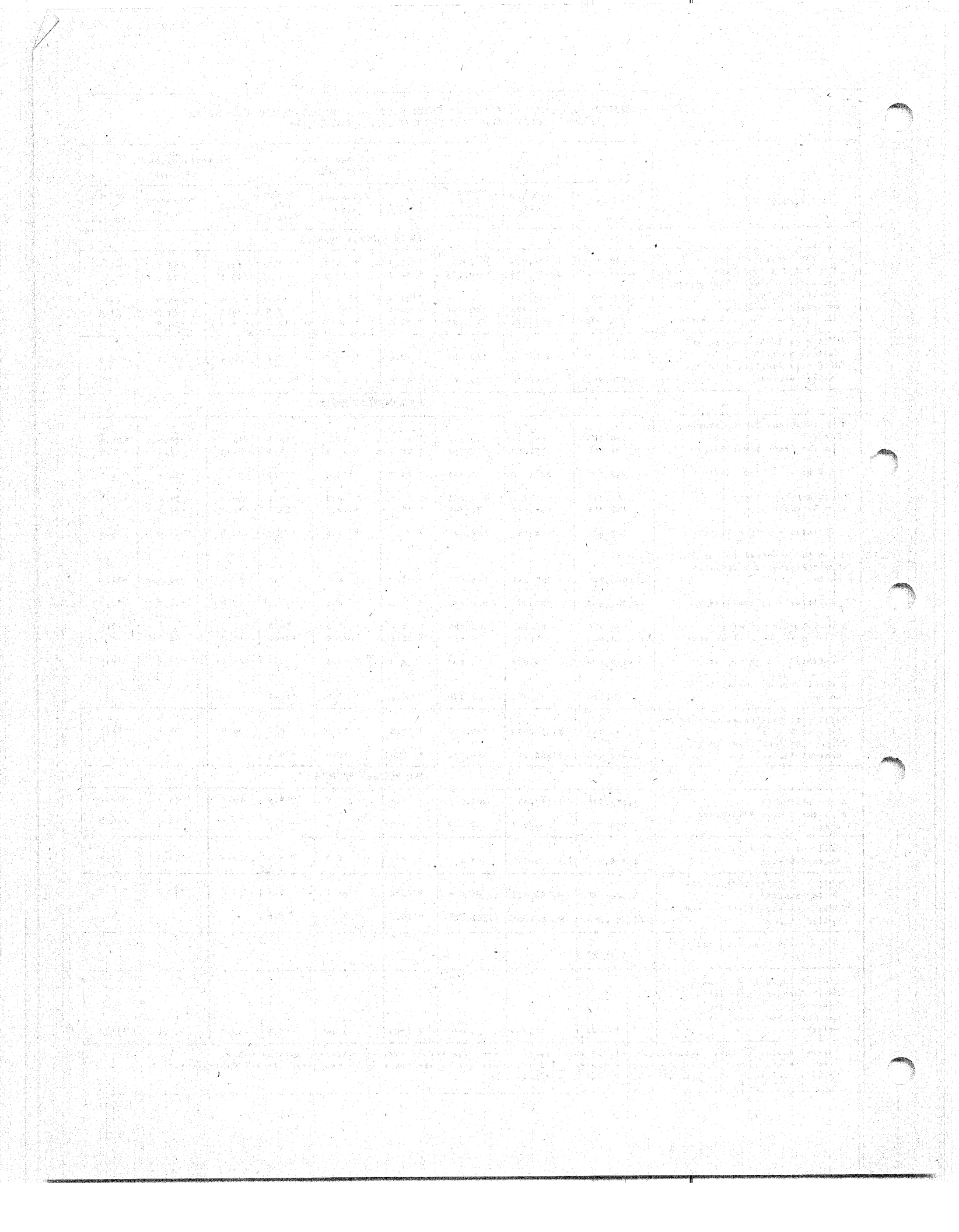
TABLE 3.--NUMBER OF VEHICLES, CLASSIFIED BY TYPES, USING TOLL FACILITIES AND DRAWBRIDGES
IN JULY 1944 COMPARED WITH THOSE IN JULY 1943 AND 1941

Facilities	July 1944			Percentage change from 1943			Percentage change from 1941		
	Total	Passenger cars	Trucks and busses	Total	Passenger cars	Trucks and busses	Total	Passenger cars	Trucks and busses
THREE EASTERN REGIONS									
3 in the Eastern States	45,911	38,930	6,981	+ 19.3	+ 19.5	+17.9	-62.0	-66.5	+45.0
12 in the Middle Atlantic States	4,447,242	3,597,239	850,003	+ 44.9	+ 61.0	+ 1.8	-28.1	-32.0	- 5.1
Fleetwood, Viaduct, Westchester County, New York	199,147	199,147	---	+134.6	+134.6	---	-65.2	-65.2	---
Pennsylvania Turnpike	188,618	80,996	27,622	+ 40.9	+ 67.1	- 3.5	-66.2	-72.5	+ 3.6
7 in the South Atlantic States	380,426	301,231	79,195	+ 14.6	+ 28.3	-18.6	-34.2	-38.8	- 7.2
TOTAL - 24 facilities in the Eastern States ¹	5,181,344	4,217,543	963,801	+ 43.8	+ 60.0	- 0.3	-33.4	-37.7	- 4.9
TOTAL - 27 facilities in the Eastern States	5,506,951	4,486,710	1,020,241	+ 43.9	+ 59.2	+ 1.4			
FOUR CENTRAL REGIONS									
6 on the Great Lakes Canadian Border ²	629,400	585,409	43,991	+ 78.1	+ 85.5	+16.5	-23.7	-26.2	+37.4
2 in the Great Lakes Region	99,660	79,819	19,841	+ 25.9	+ 30.8	+ 9.3	-57.3	-62.4	- 7.0
Subtotal - 8 facilities	729,060	665,228	63,832	+ 68.6	+ 76.6	+14.2	-31.1	-38.8	+19.7
8 on the Ohio River	741,462	630,601	110,861	+ 4.0	+ 3.8	+ 5.1	-35.2	-37.4	-18.3
9 in Kentucky	147,469	116,127	31,342	+ 5.1	+ 2.9	+13.7	-27.6	-31.8	- 6.2
Subtotal - 17 facilities	888,931	746,728	142,203	+ 4.1	+ 3.6	+ 6.8	-34.0	-36.6	-15.9
11 on the Mississippi and St. Croix Rivers, St. Louis and north	1,002,809	792,341	210,468	- 7.0	- 6.9	- 7.1	-43.7	-46.2	-31.7
Subtotal - 11 facilities	1,002,809	792,341	210,468	- 7.0	- 6.9	- 7.1	-43.7	-46.2	-31.7
3 on the Missouri River	109,084	86,788	22,296	+ 1.8	+ 7.0	-14.5	-17.2	-18.3	-12.2
2 in the Missouri River area	3,422	2,908	514	+ 25.1	+ 23.0	+38.2	-42.2	-45.0	-18.8
Subtotal - 5 facilities	112,506	89,696	22,810	+ 2.4	+ 7.5	-13.7	-18.2	-19.6	-12.4
3 facilities on the Mexican Border	50,725	41,475	9,250	+ 6.5	+ 4.6	+16.1			
TOTAL - 41 facilities in the Central States ¹	2,733,306	2,293,993	439,313	+ 10.5	+ 12.9	- 0.6	-36.8	-39.1	-21.1
TOTAL - 50 facilities in the Central States	3,012,893	2,528,261	484,632	+ 9.8	+ 12.0	- 0.6			
TWO WESTERN REGIONS									
4 in California	2,113,520	1,848,468	265,052	- 7.4	- 8.9	+ 5.0	-19.1	-23.1	+27.2
3 in the Oregon-Washington area	220,729	189,927	30,802	- 1.2	- 1.2	- 1.3	- 7.7	-12.5	+40.5
TOTAL - 7 facilities in the Western States	2,334,249	2,038,395	295,854	- 6.8	- 8.2	+ 4.3	-18.1	-22.2	+28.5
TOTAL - 72 facilities in the United States ¹	10,248,899	8,549,931	1,698,968	+ 19.4	+ 24.1	+ 0.4	-31.5	-35.0	- 5.6
TOTAL - 85 facilities in the United States	10,864,348	9,062,598	1,801,750	+ 19.6	+ 24.0	+ 1.3			
5 facilities reporting only total traffic	287,797			+ 4.0					
31 drawbridges in Eastern North Carolina (not toll) based on one Sunday and one weekday 8-hour count at each bridge	39,847	33,963	5,884	+ 12.2	- 13.8	- 1.9	-32.7	-37.0	+10.6

¹ These facilities have comparative data for 1944, 1943 and 1941 and are included in the larger total below.

² Three of the facilities are in western New York and therefore are related to similar facilities in the Central States.

³ Four of the facilities are between Ohio and West Virginia.



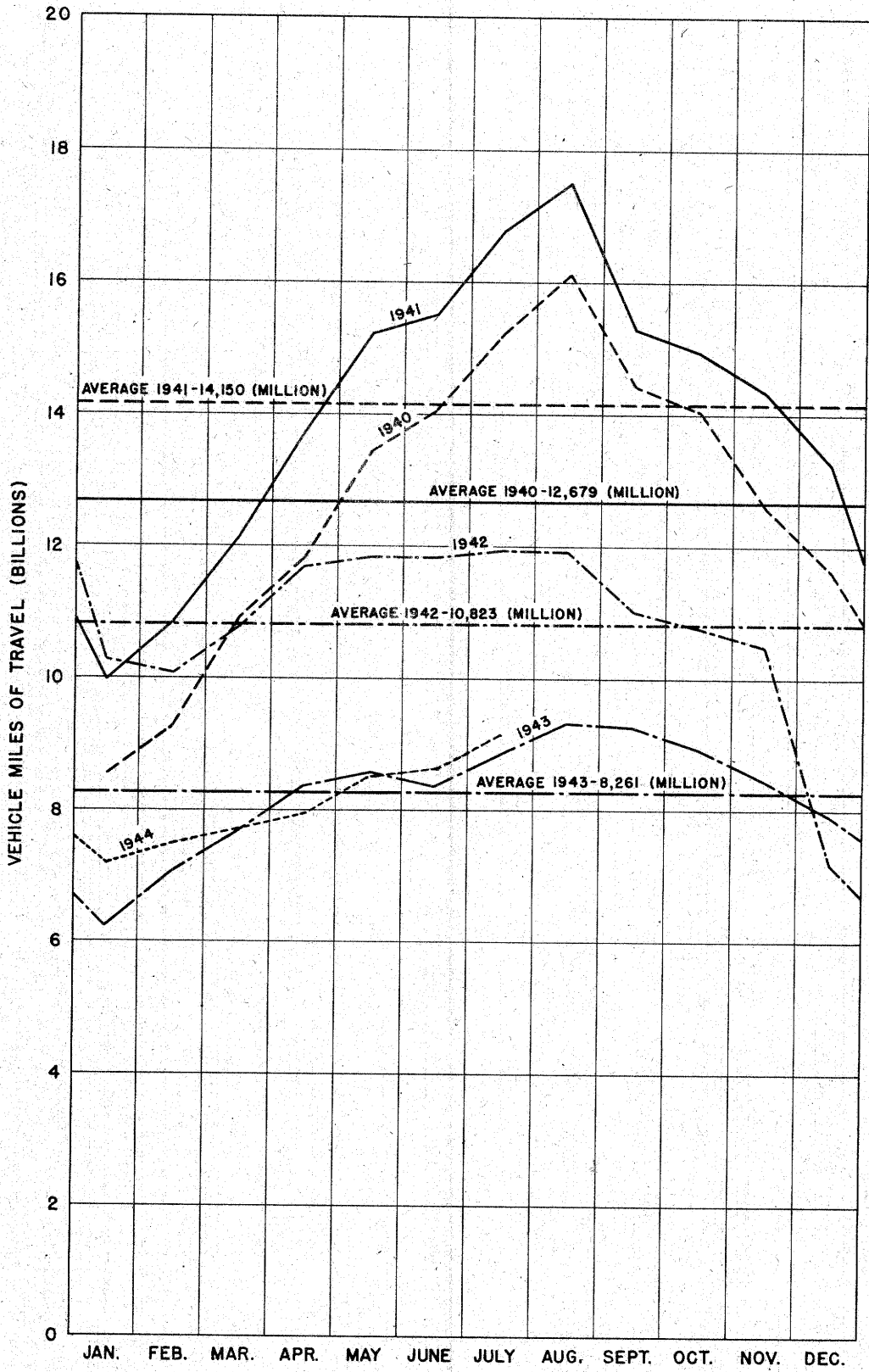
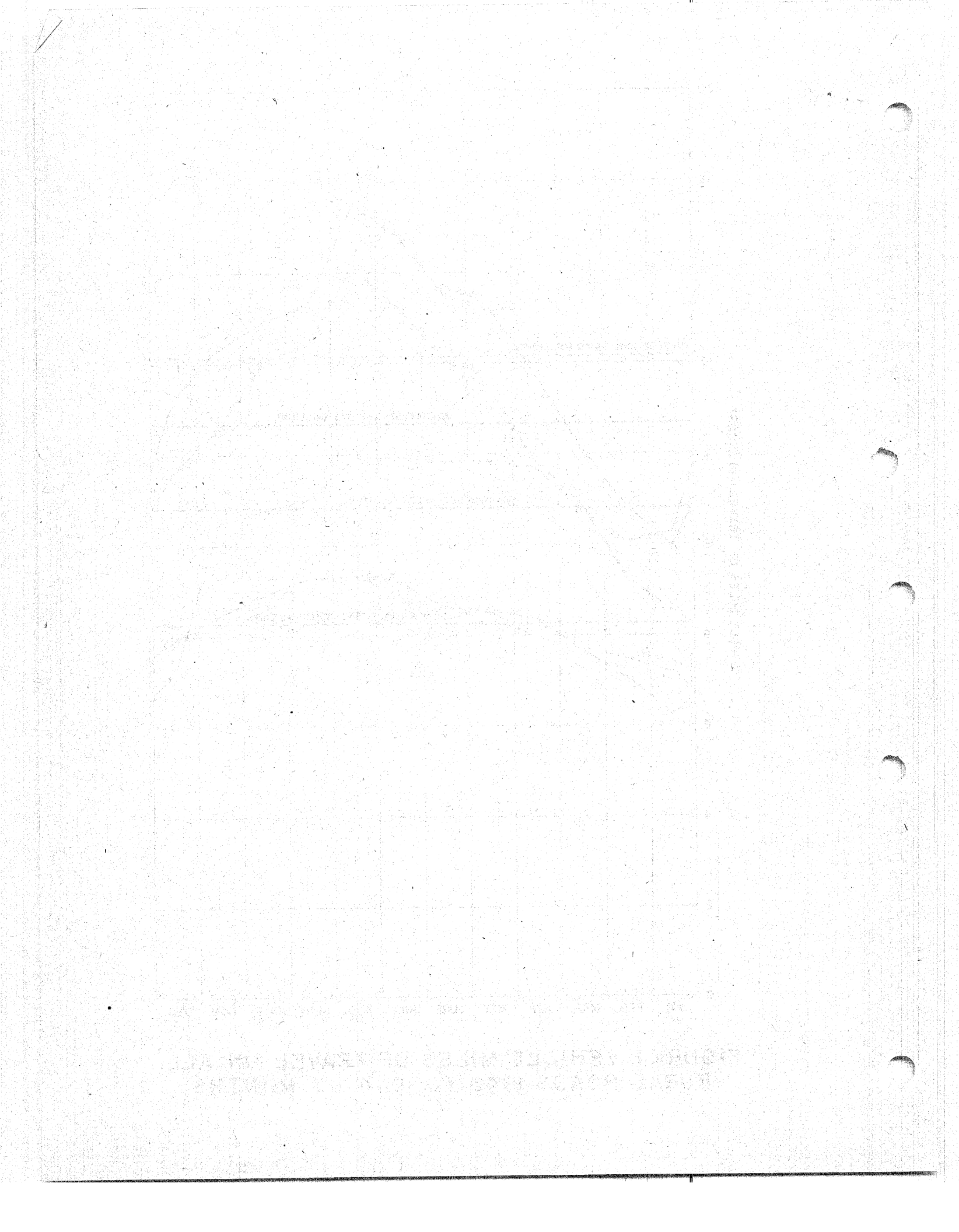


FIGURE I. VEHICLE MILES OF TRAVEL ON ALL RURAL ROADS 1940 TO 1944 BY MONTHS



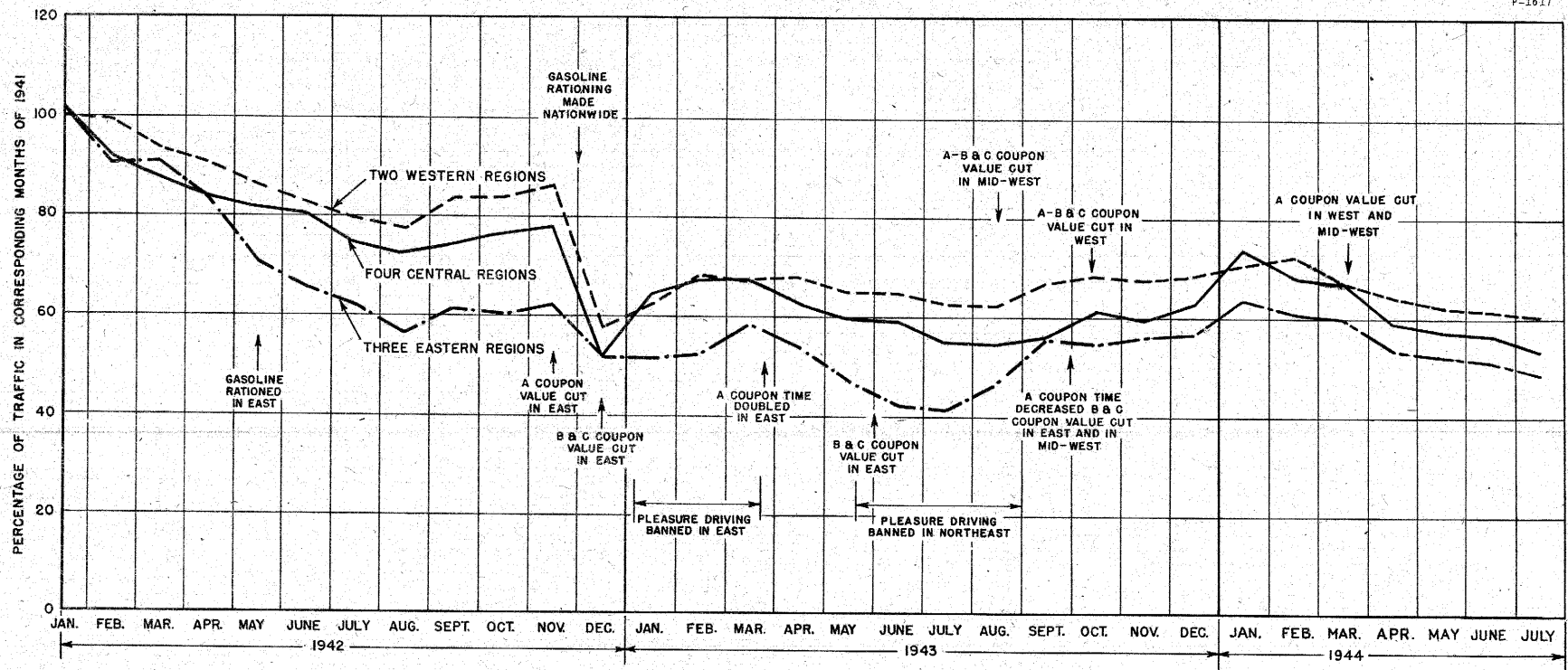


FIGURE 2. PERCENTAGE RELATIONS OF RURAL TRAFFIC IN MONTHS OF 1942, 1943, AND 1944 WITH THAT IN CORRESPONDING MONTHS OF 1941

STATE OF CALIFORNIA

COUNTY OF LOS ANGELES

PLAT NO. 12345

SECTION 12

TOWNSHIP 12N

RANGE 12E

S. 12345678

123456789

1234567890

12345678901