

M. Daniel

U. S. DEPARTMENT OF COMMERCE
Sinclair Weeks, Secretary

BUREAU OF PUBLIC ROADS
C. D. Curtiss, Commissioner

TRAFFIC VOLUME TRENDS

Washington, D. C.

December 1954

SUMMARY OF MOTOR VEHICLE TRAVEL IN DECEMBER (PRELIMINARY) AND NOVEMBER (REVISED)

	Preliminary data for December 1954			Revised data for November 1954		
	Vehicle-miles (millions)		Percent- age change	Vehicle-miles (millions)		Percent- age change
	1953 (revised)	1954		1953 (revised)	1954	
Class of road:						
Main rural roads.....	15,942	16,565	+3.9	16,533	17,131	+3.6
Local rural roads.....	6,241	6,481	+3.8	6,186	6,482	+4.8
All rural roads.....	22,183	23,046	+3.9	22,719	23,613	+3.9
City streets.....	+5.7	+5.3
All roads and streets....	+4.8	+4.6
By region (rural only):						
Eastern regions.....	7,845	8,041	+2.5	7,729	8,049	+4.1
Central regions.....	10,772	11,197	+3.9	11,334	11,672	+3.0
Western regions.....	3,566	3,808	+6.8	3,656	3,892	+6.5

Table 1.—DECEMBER 1954 MOTOR VEHICLE TRAVEL (PRELIMINARY)

Summary of Automatic Traffic Recorder Data

State	Number of stations	Percentage change from December 1953	State	Number of stations	Percentage change from December 1953
Alabama.....	9	+10.0	Nebraska.....	15	+13.1
Arizona.....	7	+1.4	Nevada.....	19	+14.5
Arkansas.....	25	+5.2	New Hampshire.....	15	+6.9
California.....	New Jersey.....
Colorado.....	New Mexico.....	26	+2.2
Connecticut.....	18	+2.7	New York.....
Delaware.....	7	+8.0	North Carolina.....	38	+5.2
Florida.....	North Dakota.....	18	+11.9
Georgia.....	Ohio.....	24	-1.8
Idaho.....	9	+5.5	Oklahoma.....	20	-1.1
Illinois.....	6	+2.1	Oregon.....	20	+5.3
Indiana.....	21	-3.2	Pennsylvania.....	51	+0.6
Iowa.....	32	+2.5	Rhode Island.....	1	+4.7
Kansas.....	14	+7.4	South Carolina.....	9	+18.1
Kentucky.....	South Dakota.....	30	-0.3
Louisiana.....	36	+11.3	Tennessee.....	26	+1.7
Maine.....	12	+2.4	Texas.....	100	+6.9
Maryland.....	23	+2.7	Utah.....
Massachusetts.....	8	-3.3	Vermont.....	7	-3.0
Michigan.....	29	+0.5	Virginia ¹	+1.5
Minnesota.....	25	+5.9	Washington.....	11	+8.0
Mississippi.....	West Virginia.....	32	-1.5
Missouri.....	26	+0.2	Wisconsin.....	14	+0.1
Montana.....	20	+6.3	Wyoming.....

¹Percentage calculated from trend in vehicle-miles furnished by State.

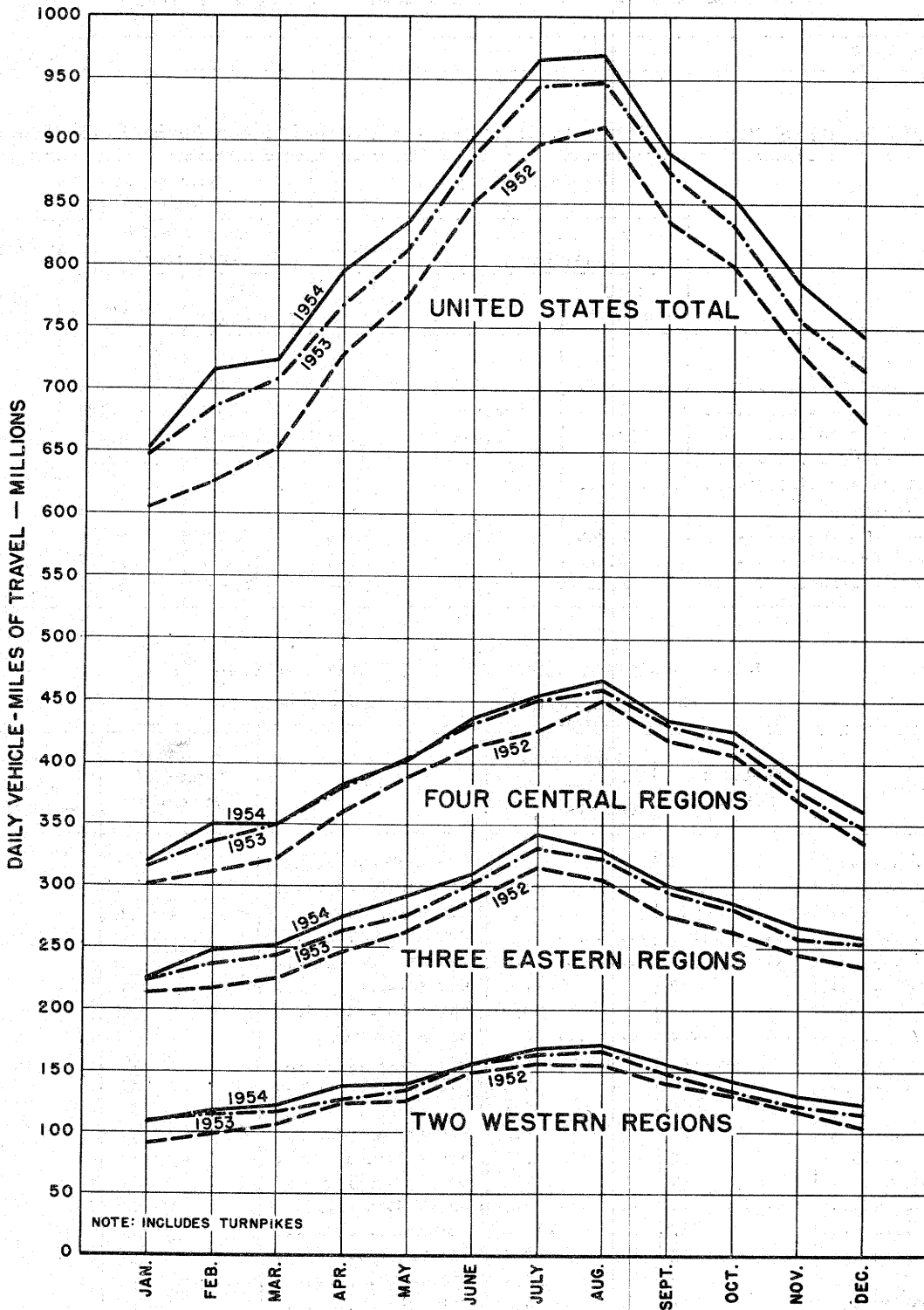


FIGURE I—TRAVEL ON ALL RURAL ROADS, BY MONTHS

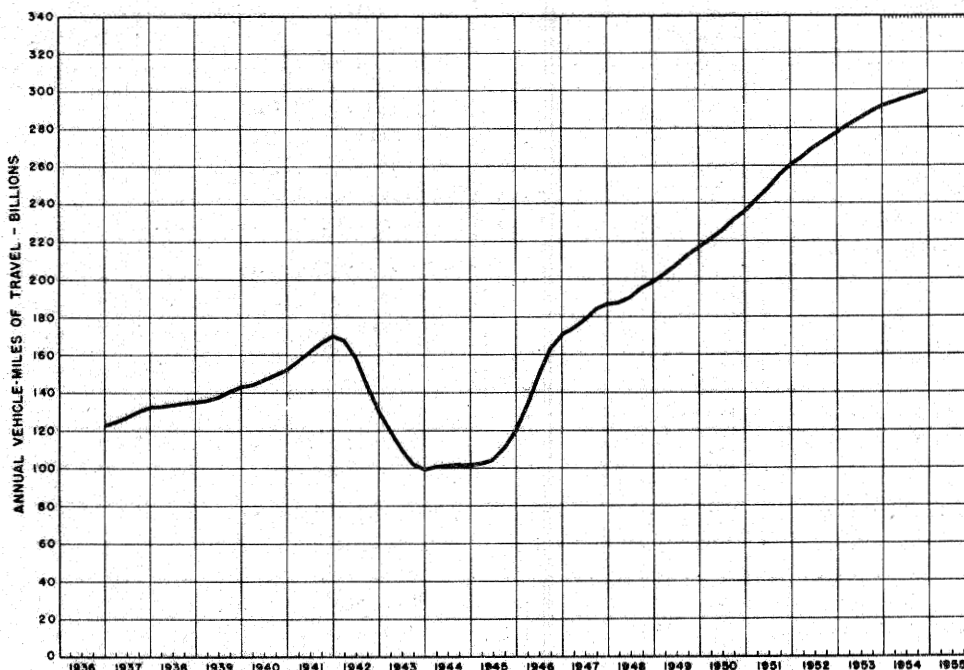


FIGURE 2 - TRAVEL ON ALL RURAL ROADS BY 12-MONTH PERIODS ENDING EACH MONTH, IN VEHICLE-MILES

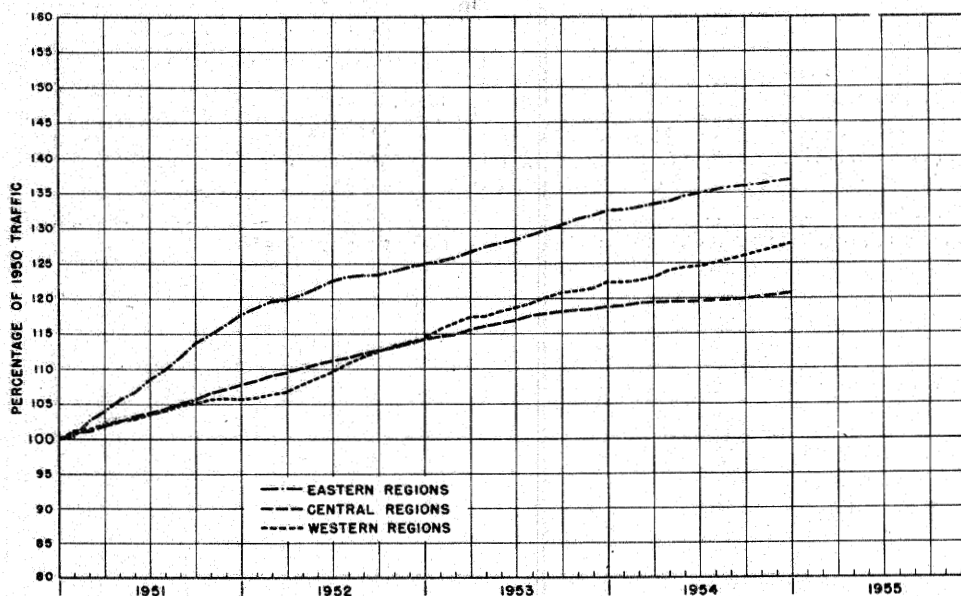


FIGURE 3 - TRAVEL ON ALL RURAL ROADS BY 12-MONTH PERIODS ENDING EACH MONTH, AS A PERCENTAGE OF TRAFFIC IN THE CALENDAR YEAR 1950

Table 2.—NOVEMBER 1954 MOTOR VEHICLE TRAVEL (REVISED)
Summary of Automatic Traffic Recorder Data

Region and state	Number of stations	Percentage change from November 1953	Region and state	Number of stations	Percentage change from November 1953
NEW ENGLAND:			EAST SOUTH CENTRAL:		
Connecticut.....	20	+6.4	Alabama.....	8	+3.1
Maine.....	12	+11.3	Kentucky.....	15	-1.7
Massachusetts.....	8	-4.2	Mississippi.....	22	-2.5
New Hampshire.....	15	+7.3	Tennessee.....	27	+0.4
Rhode Island.....	4	-9.4	WEST NORTH CENTRAL:		
Vermont.....	14	+5.8	Iowa.....	33	+3.6
MIDDLE ATLANTIC:			Kansas.....	64	+11.5
New Jersey.....	10	+4.2	Minnesota.....	25	+1.8
New York.....	Missouri.....	105	+4.1
Pennsylvania.....	51	+5.8	Nebraska ¹	+6.5
SOUTH ATLANTIC (North):			North Dakota ¹	+7.5
Delaware.....	7	+15.7	South Dakota.....	30	+2.2
Maryland.....	27	+6.5	WEST SOUTH CENTRAL:		
Virginia ¹	+1.6	Arkansas.....	25	+8.1
West Virginia.....	32	-1.5	Louisiana.....	41	+6.8
SOUTH ATLANTIC (South):			Oklahoma.....	20	+1.3
Florida.....	21	+9.3	Texas.....	101	+9.1
Georgia.....	22	+2.7	MOUNTAIN:		
North Carolina.....	40	+2.9	Arizona ¹	+11.2
South Carolina.....	6	+11.4	Colorado.....	22	+3.1
EAST NORTH CENTRAL:			Idaho.....	9	+1.7
Illinois.....	6	+5.5	Montana.....	20	+2.7
Indiana.....	21	-6.1	Nevada.....	20	+8.1
Michigan.....	29	+1.7	New Mexico ¹	+4.5
Ohio.....	27	-2.1	Utah.....	12	+3.2
Wisconsin.....	16	+0.3	Wyoming.....	13	+1.1
			PACIFIC:		
			California ¹	+5.5
			Oregon.....	20	+5.1
			Washington.....	15	+8.5

¹Percentage calculated from trend in vehicle-miles furnished by State.