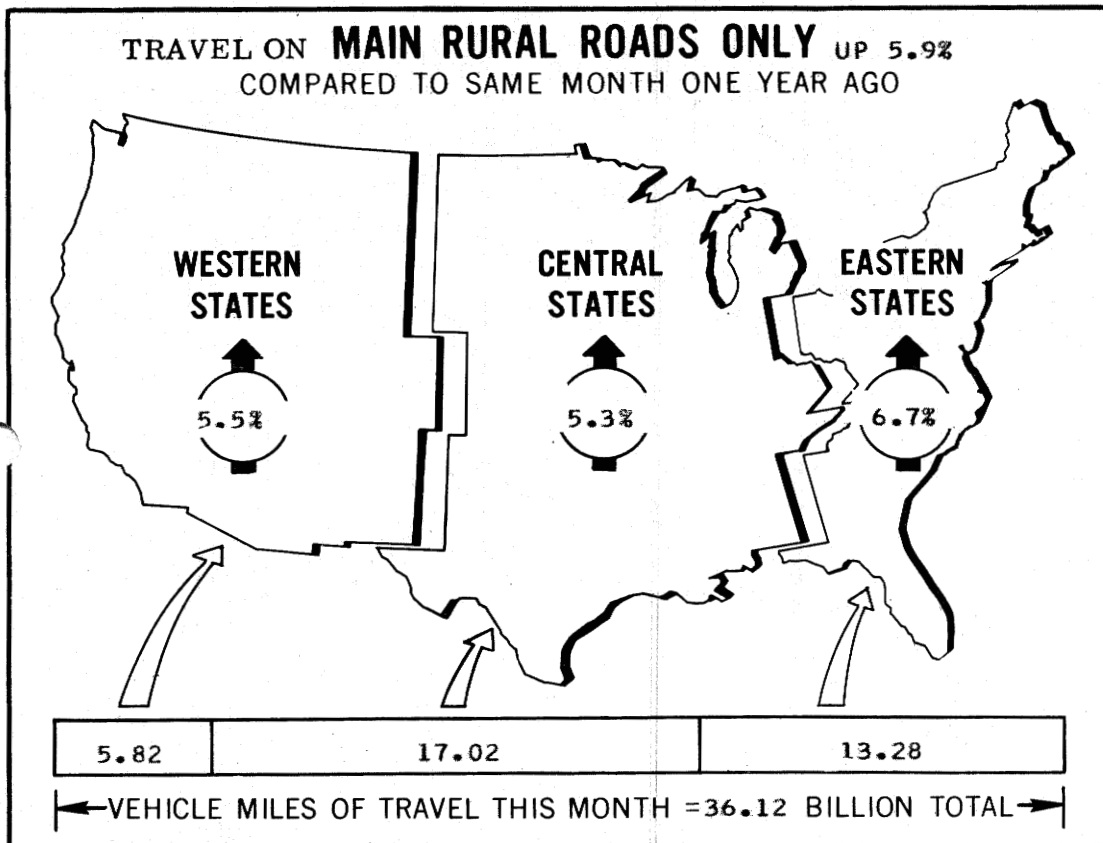


TRAFFIC VOLUME TRENDS

U. S. DEPARTMENT OF TRANSPORTATION
FEDERAL HIGHWAY ADMINISTRATION

DECEMBER 1971 ^{1/}

TRAVEL ON **ALL ROADS AND STREETS** UP 5.7%
COMPARED TO SAME MONTH ONE YEAR AGO



^{1/}ALL DATA FOR THIS MONTH ARE PRELIMINARY, REVISED VALUES FOR PREVIOUS MONTH ARE SHOWN IN TABLES 1 AND 2

FOR OFFICIAL DISTRIBUTION

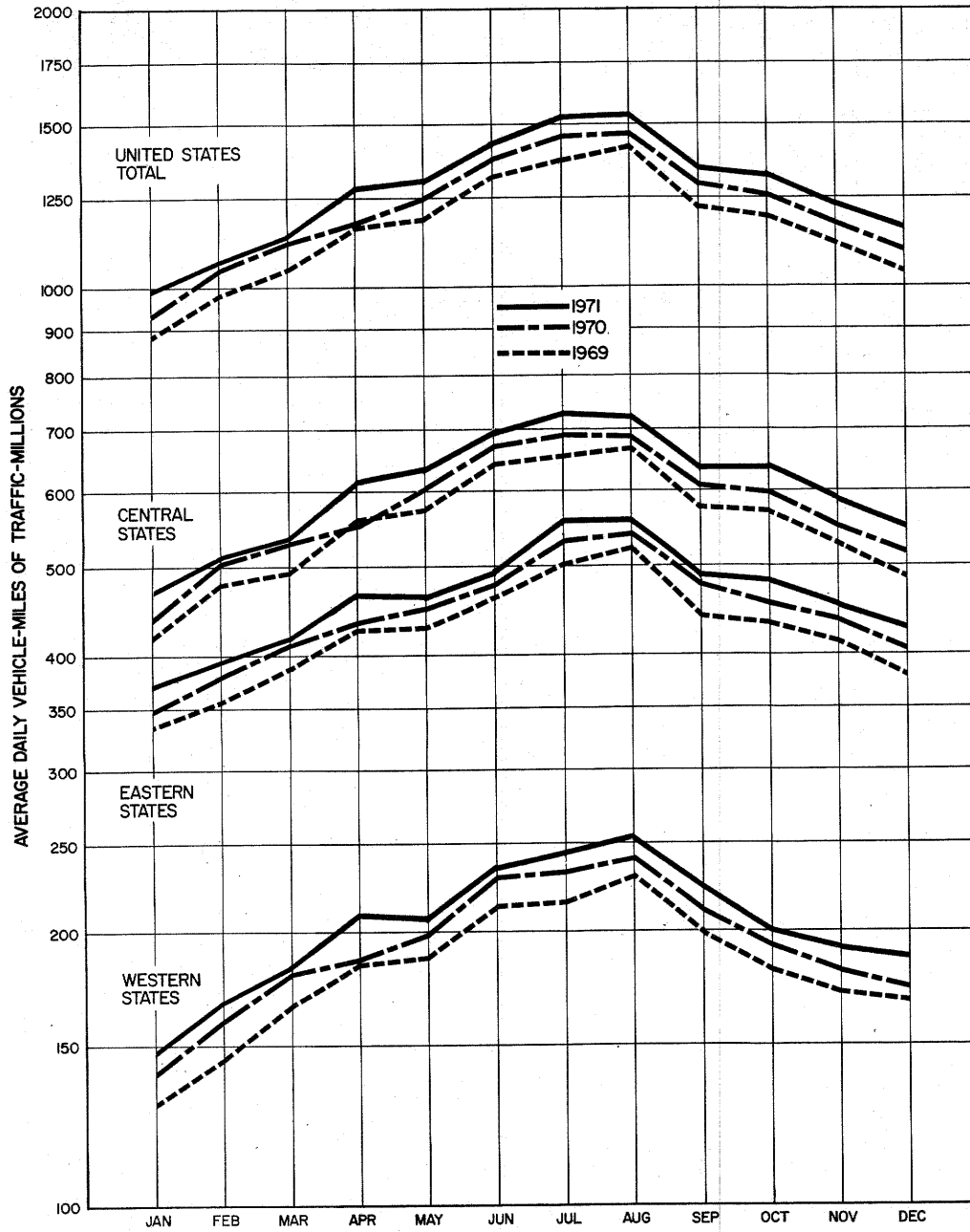


FIGURE 1 — TRAVEL ON MAIN RURAL ROADS, BY MONTHS

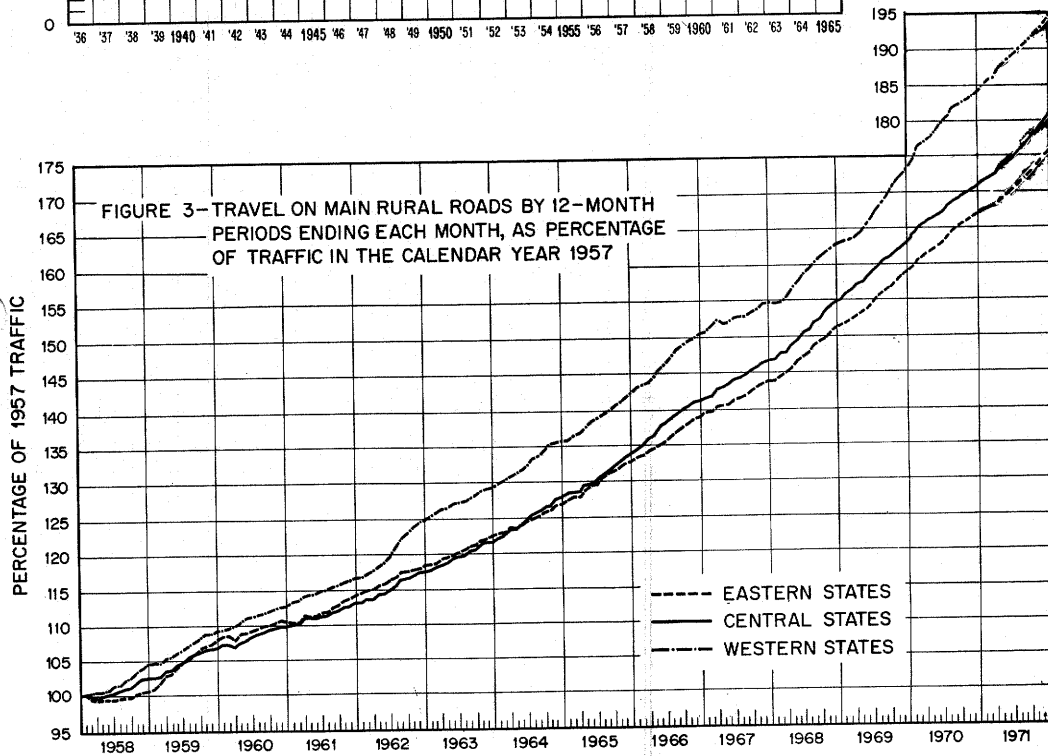
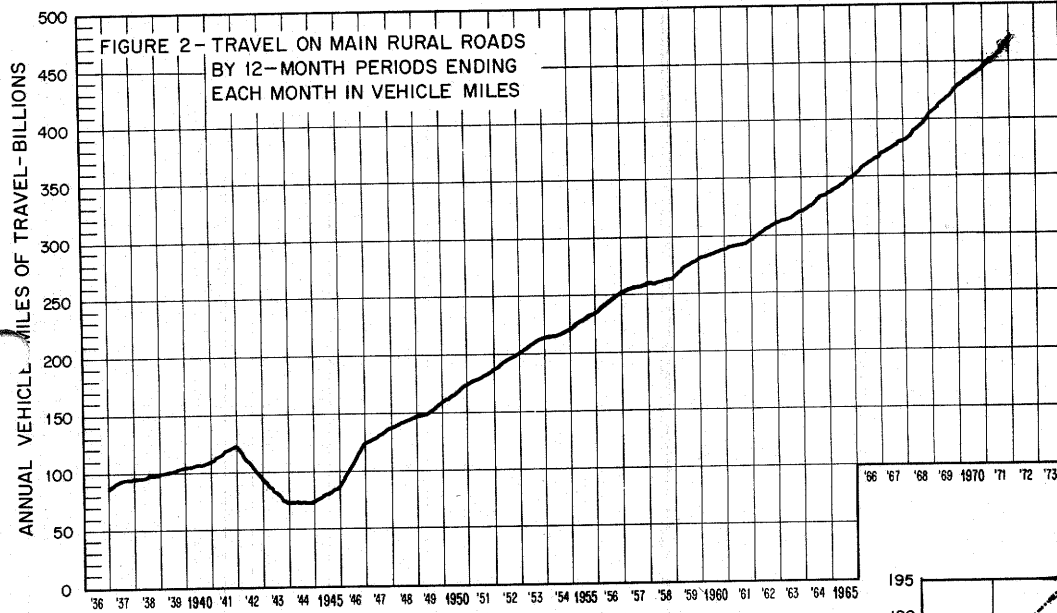


TABLE 1.-SUMMARY BY ROAD CLASS AND BY GEOGRAPHIC AREA

| | PRELIMINARY DATA FOR DECEMBER | | | REVISED DATA FOR NOVEMBER | | |
|------------------------------|-------------------------------|--------|-------------------|---------------------------|--------|-------------------|
| | VEHICLE-MILES (MILLIONS) | | PERCENTAGE CHANGE | VEHICLE-MILES (MILLIONS) | | PERCENTAGE CHANGE |
| | 1971 | 1970 | | 1971 | 1970 | |
| CLASS OF ROAD, ALL STATES: | | | | | | |
| MAIN RURAL ROADS..... | 36,261 | 34,245 | 5.9 | 37,024 | 34,851 | 6.2 |
| LOCAL RURAL ROADS..... | | | 3.3 | | | 3.9 |
| ALL RURAL ROADS..... | | | 5.2 | | | 5.7 |
| CITY STREETS..... | | | 6.2 | | | 4.4 |
| ALL ROADS AND STREETS..... | | | 5.7 | | | 5.1 |
| 48 STATES (MAIN RURAL ONLY): | | | | | | |
| EASTERN REGION..... | 13,276 | 12,441 | 6.7 | 13,633 | 12,819 | 6.3 |
| CENTRAL REGION..... | 17,021 | 16,158 | 5.3 | 17,513 | 16,538 | 5.9 |
| WESTERN REGION..... | 5,819 | 5,514 | 5.5 | 5,745 | 5,365 | 7.1 |
| TOTAL..... | 36,116 | 34,113 | 5.9 | 36,891 | 34,722 | 6.2 |

TABLE 2.-CHANGES ON MAIN RURAL ROADS BY STATES

| DIVISION AND STATE | DECEMBER (PRELIMINARY) | | NOVEMBER (REVISED) | | DIVISION AND STATE | DECEMBER (PRELIMINARY) | | NOVEMBER (REVISED) | |
|-------------------------|------------------------|--------------------|--------------------|--------------------|---------------------|------------------------|--------------------|--------------------|--------------------|
| | NUMBER OF STATIONS | PER-CENTAGE CHANGE | NUMBER OF STATIONS | PER-CENTAGE CHANGE | | NUMBER OF STATIONS | PER-CENTAGE CHANGE | NUMBER OF STATIONS | PER-CENTAGE CHANGE |
| NEW ENGLAND: | | | | | EAST SOUTH CENTRAL: | | | | |
| CONNECTICUT..... | - | - | 17 | 2.1 | ALABAMA..... | 52 | 9.5 | 51 | 9.3 |
| MAINE..... | 11 | 13.7 | 20 | 5.2 | KENTUCKY..... | 34 | 6.6 | 31 | 4.1 |
| MASSACHUSETTS..... | - | - | - | - | MISSISSIPPI..... | 41 | 6.4 | 39 | 8.4 |
| NEW HAMPSHIRE..... | 29 | 12.3 | 57 | 3.2 | TENNESSEE..... | 20 | 8.5 | 19 | 8.1 |
| RHODE ISLAND..... | 3 | 9.0 | 5 | 0.7 | WEST NORTH CENTRAL: | | | | |
| VERMONT..... | 45 | 7.4 | 45 | 3.4 | IOWA..... | 29 | 3.3 | 30 | 4.9 |
| MIDDLE ATLANTIC: | | | | | KANSAS..... | 73 | -0.2 | 77 | 5.5 |
| NEW JERSEY..... | 15 | 6.6 | 18 | 3.1 | MINNESOTA..... | 38 | 7.1 | 35 | 6.6 |
| NEW YORK..... | - | - | 37 | 4.7 | MISSOURI..... | 5 | 5.2 | 80 | 6.8 |
| PENNSYLVANIA..... | - | - | 37 | 3.4 | NEBRASKA..... | 20 | 4.6 | 20 | 2.3 |
| SOUTH ATLANTIC (NORTH): | | | | | NORTH DAKOTA..... | 35 | 5.6 | 35 | 8.7 |
| DELAWARE..... | 9 | 8.7 | 13 | 5.5 | SOUTH DAKOTA..... | 35 | 2.3 | 35 | 5.0 |
| MARYLAND..... | 30 | 5.1 | 32 | 4.8 | WEST SOUTH CENTRAL: | | | | |
| VIRGINIA..... | - | 5.1 | - | 5.0 | ARKANSAS..... | 36 | 10.9 | 36 | 11.7 |
| WEST VIRGINIA..... | 28 | 5.7 | 26 | 6.5 | LOUISIANA..... | - | - | 27 | 3.5 |
| SOUTH ATLANTIC (SOUTH): | | | | | OKLAHOMA..... | - | - | - | - |
| FLORIDA..... | - | - | 62 | 9.8 | TEXAS..... | 114 | 3.5 | 108 | 5.2 |
| GEORGIA..... | 33 | 9.3 | 35 | 9.7 | MOUNTAIN: | | | | |
| NORTH CAROLINA..... | - | - | 44 | 10.1 | ARIZONA..... | 21 | 8.3 | 17 | 8.2 |
| SOUTH CAROLINA..... | 5 | 4.9 | 5 | 16.8 | COLORADO..... | 40 | 7.3 | 39 | 10.7 |
| EAST NORTH CENTRAL: | | | | | IDAHO..... | - | - | 63 | 6.5 |
| ILLINOIS..... | 15 | -2.7 | 20 | 2.2 | MONTANA..... | 25 | 1.5 | 27 | 8.7 |
| INDIANA..... | 29 | 6.9 | 27 | 7.3 | NEVADA..... | 33 | 10.1 | 32 | 6.2 |
| MICHIGAN..... | - | - | - | - | NEW MEXICO..... | 30 | 2.4 | 33 | 7.8 |
| OHIO..... | - | - | - | - | UTAH..... | 40 | 3.0 | 34 | 5.0 |
| WISCONSIN..... | 44 | 9.7 | 50 | 6.5 | WYOMING..... | 36 | 9.9 | 36 | 5.6 |
| ALASKA..... | 12 | 12.3 | 15 | 0.3 | PACIFIC: | | | | |
| HAWAII..... | - | - | - | - | CALIFORNIA..... | 18 | 5.3 | 17 | 5.9 |
| | | | | | OREGON..... | - | - | 89 | 8.6 |
| | | | | | WASHINGTON..... | - | - | - | - |

NOTE: 1-RURAL MILEAGE OF EACH MAJOR TOLL ROUTE IS CONSIDERED AS ONE OR MORE STATIONS, DEPENDING ON STATES' METHOD OF REPORTING.
 2-WHERE THE NUMBER OF STATIONS IS DASH AND THE PERCENTAGE CHANGE IS SHOWN, THE STATES PREPARED TRAFFIC ESTIMATES, GENERALLY BASED ON EXTENSIVE TRAFFIC SAMPLING SURVEYS.
 3-WHERE THE NUMBER OF STATIONS AND THE PERCENTAGE CHANGE FOR A STATE ARE DASHES, THE STATE REPORT HAD NOT BEEN RECEIVED AT TIME OF PRINTING.