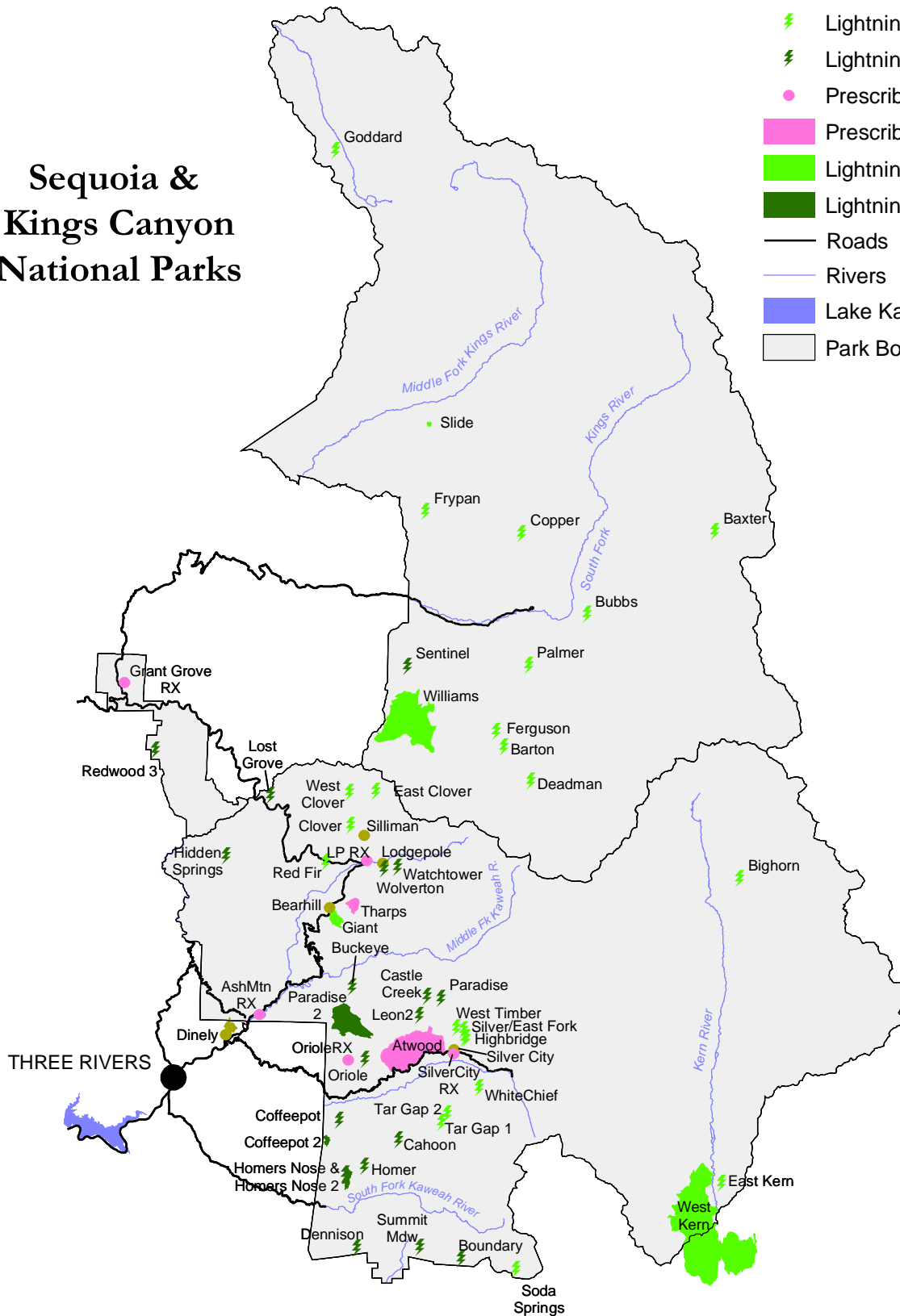


Fire Atlas 2003

Sequoia & Kings Canyon National Parks

Fire Type

- Human Caused
- ⚡ Lightning - Fire Use
- ⚡ Lightning - Suppression
- Prescribed Fire
- Prescribed Fire
- Lightning - Fire Use
- Lightning - Suppression
- Roads
- Rivers
- Lake Kaweah
- Park Boundaries



Fire Atlas – 2003
Sequoia and Kings Canyon National Parks

December 31, 2003

Total Acreage Burned by all Causes: 12,028 acres
Total Number of Fires: 60

Wildland Fires (8,986 acres)

Unplanned fires started by humans or lightning. Human-caused fires are always suppressed. Lightning-caused fires are evaluated to determine the appropriate management strategy. Some of these fires are allowed to burn for resource benefit, others are suppressed.

- **Fire Use (7,329.6 acres)**

Lightning-caused and actively managed to maintain natural ecosystem processes. In 2003, there were 27 fire use projects including the Williams Fire (3,471 acres), the West Kern Fire (3,510 acres inside the park and 4,458 acres outside the park) and the Giant Fire (275 acres). (Other fire names: Red Fir, Clover, Ferguson, Barton, Baxter, Bighorn, East Clover, Deadman, White Chief, Copper, Palmer, East Kern, Goddard, Silver, Tar Gap 1, Tar Gap 2, West Timber, Bubbs, High Bridge, East Fork, Fry Pan, West Clover, Soda Springs, and Slide Bluffs)

- **Suppressed (1,656.4 acres)**

- **Lighting Fires**

Lightning-caused fires that were suppressed due to factors such as proximity to park boundary, unacceptable smoke impacts, unacceptable weather conditions, or competition for firefighting resources regionally or nationally. In 2003, there were 21 of these fires totaling 1,647 acres. (Fire names: Wolverton, Coffeepot, Sentinel, Watch Tower, Cahoon, Hidden Springs, Summit Meadow, Leon 2, Redwood 3, Homer's Nose, Oriole, Lost Grove, Paradise, Castle Creek, Homer, Dennison, Boundary, Buckeye, Coffeepot 2, Homer's Nose 2, Paradise 2)

- **Human-Caused Wildfires**

Unplanned and unwanted fires that were aggressively suppressed. In 2003, there were 5 human-caused fires totaling 9.4 acres. (Fire names: Lodgepole, Bearhill, Dinely, Silliman, and Silver City)

Prescribed Fires (3,042 acres)

Fires planned and set by NPS staff in designated areas to reduce hazardous fuels and/or restore natural conditions. In 2003, there were 7 prescribed burns:

- **Regular Landscape Burning (2,963 acres)**

Ash Mountain	Sequoia NP	25 acres
Atwood	Sequoia NP	2,714 acres
Tharps	Sequoia NP	224 acres

- **Pile Burning After Thinning Projects (79 acres)**

Grant Grove	Kings Canyon NP	36 acres
Lodgepole	Sequoia NP	13 acres
Oriole Lake	Sequoia NP	10 acres
Silver City	Sequoia NP	20 acres